

# Survival and growth rates of mangroves planted in vertical and horizontal aquaponic systems in North Jakarta, Indonesia

*by* Endang Hilmi

---

**Submission date:** 24-Jan-2022 07:10AM (UTC+0700)

**Submission ID:** 1746597588

**File name:** 9956-Article\_Text-56640-1-18-20220123.doc (1.06M)

**Word count:** 5396

**Character count:** 31675

## Survival and growth rates of mangroves planted in vertical and horizontal aquaponic systems in North Jakarta, Indonesia

ENDANG HILMI<sup>1,\*</sup>, LILIK KARTIKA SARI<sup>2</sup>, TRI NUR CAHYO<sup>3</sup>, ARIF MAHDIANA<sup>2</sup>, PETRUS HARY TJAHJA SOEDIBYA<sup>4</sup>, EMING SUDIAN<sup>1</sup>

<sup>1</sup>Aquatic Resources Management Program (S1) and Magister of Aquatic Resources Management (S2), Faculty of Fisheries and Marine Science, Jenderal Soedirman University, Jl. Profesor DR. HR Boenyamin No.708, Dukuhbandong, Grendeng, Kec. Purwokerto Utara, Kabupaten Banyumas, Jawa Tengah, Indonesia. Tel./fax. +62-271-637457 Ext. 129, \*email: [dr.endanghilmi@gmail.com](mailto:dr.endanghilmi@gmail.com) (correspondence author)

<sup>2</sup>Aquatic Resources Management Program (S1), Faculty of Fisheries and Marine Science, Jenderal Soedirman University.

<sup>3</sup>Marine Science Program (S1) Faculty of Fisheries and Marine Science, Jenderal Soedirman University

<sup>4</sup>Aquaculture Program, Faculty of Fisheries and Marine Science, Jenderal Soedirman University

<sup>5</sup>Faculty of Biology, Jenderal Sudirman University, Purwokerto. Jl Dr. Soeparno No 63, Purwokerto 53122 Jawa Tengah Telp/fax +62-281-638794

Manuscript received: xxx. Revision accepted: xxx January 2022

**1**  
**Abstract.** Hilmi E, Sari LK, Cahyo TN, Mahdiana A, Soedibja PHT, Sudiana E. 2022. Survival and growth rates of mangroves planted in vertical and horizontal aquaponic systems in North Jakarta, Indonesia. *Biodiversitas* 23: xxxx. Mangrove rehabilitation is aimed to reverse mangrove deforestation and degradation. Various efforts have been conducted to rehabilitate the degraded mangroves, yet problems arise when planting mangroves in the high and permanently water-logged areas in coastline. The aquaponic system is a mangrove planting method introduced to reduce the impact of permanent and highly water inundation. This research aims to analyze the survival rate of mangroves planted using vertical and horizontal aquaponic systems in the north coast of Jakarta, and to investigate the correlation between physico-chemical environmental parameters and the survival and growth rates of the planted mangroves. The results showed that the survival rate of mangroves planted in the vertical aquaphonic system reached 55.4 – 96.9%. On the other hand, in the horizontal aquaponic system, the highest survival rate was obtained in mangrove planting at 80-100 cm from bottom with survived plants between 70-90%. The height growth rate of mangroves planted in aquaponic system was between 0.95 – 2.33 cm/month. The correlation analysis showed that soil salinity, soil pH and water salinity had high correlation to support living trees of mangrove seedling. *Rhizophora apiculata*, *Rhizophora mucronata*, and *Rhizophora stylosa* had highest survival and adaptation in this planting system.

**Keywords:** mangrove planting, vertical aquaponic, horizontal aquaphonic, living trees, height growth rate

### INTRODUCTION

The mangrove ecosystem in the north coast of Jakarta, Indonesia is estuarine mangrove ecosystem type located on the northern coast of the Java Island facing toward Java Sea (Hilmi et al., 2017a; Onrizal et al., 2005), which is influenced by freshwater supply from the Citarum River, Bekasi River, and Ciliwung River (Hilmi et al., 2017a; Kusumahadi et al., 2020). This mangrove ecosystem has irreplaceable ecosystem services, for example, as the buffer to mitigate the risk of coastal disasters, including tsunamis (Giri et al., 2015; Hilmi, 2018; Nur and Hilmi, 2021; Suhendra et al., 2018), tidal flooding (Krauss and Allen, 2003; Ysebaert et al., 2016) and land subsidence (Bomer et al., 2020; van Wesenbeeck et al., 2015), and serve as the habitat of aquatic organisms (Abubakar et al., 2018; Masni et al., 2016), as well as improving other ecosystem services (Duncan et al., 2016). In addition, the mangrove ecosystem in the northern coast of Jakarta has a specific affinity (Hilmi et al. 2021b), specific adaptation to reduce the impact of water inundation and flooding, pollution, salinity, and soil texture (Andriyani et al. 2020; Barreto et al. 2016; Hilmi et al. 2019; Hilmi et al. 2021a; Hilmi et al. 2017a; Tam et al. 2009).

According to Domínguez-domínguez et al. (2019; Duncan et al. (2016) and Ysebaert et al. (2016), mangrove rehabilitation is promoted to improve the vegetation cover of deforested and degraded mangroves with the objectives to mitigate the impacts of conversion activities (M. Brander et al., 2012; Taillardat et al., 2018), to improve the ecosystem services (Cochard 2017; Hilmi et al. 2021b; Jakovac et al. 2020), and to develop economic activities, recreation, and others (Giri et al., 2015; Miettinen et al., 2016). In practice, mangrove rehabilitation activities require community participation, good government policies (Ruzol et al., 2020), and suitability and feasibility in terms of ecology, economic and social aspects (Yanuartanti et al., 2015; Zhang et al., 2021)

Mangrove rehabilitation efforts have been conducted in the north coast of Jakarta. These efforts are aimed to restore the functions of the mangrove ecosystem as a greenbelt to reduce the risk of seawater intrusion, land subsidence, tidal flooding (Bomer et al., 2020; Hilmi et al., 2017a; Marois and Mitsch, 2017), as well as to sequester carbon for mitigating greenhouse gas emissions (Cameron et al., 2019) and economic benefits (Hilmi et al., 2019; Rachmawati et al., 2014). However, the major problem of mangrove planting in this area is the high mortality of the

planted mangrove especially in permanently water-inundated areas. Mangrove rehabilitation in areas with permanent water inundation needs specific methods other than the conventional techniques (Abdullah et al., 2014) to reduce the impact of inundated water (Yanuartanti et al., 2015; Ysebaert et al., 2016). As a consequence, mangrove rehabilitation in such areas requires significant effort and cost to increase the adaptation of planted mangrove to enhance the survival and growth rates in term of height and diameter (Hilmi, 2018; Hilmi et al., 2017b; Munji et al., 2013; Nur and Hilmi, 2021).

The aquaponic system is a unique mangrove rehabilitation method by planting mangrove in permanently water-inundated areas using integrated approaches of restoration ecology, silviculture and environment which aims to recover resilience and adaptive capacity of mangrove ecosystems to reduce impact of water inundation and support coastal buffering from seawater flooding. The aquaponic system is an alternative technique of mangrove rehabilitation to reduce the impact of water inundation besides the gulud technique (Yanuartanti et al., 2015). The gulud technique is constructed to support mangrove planting of *Avicennia marina* and *Rhizophora apiculata* as main species with spacing of 0.25 m x 0.25 m, 0.5 m x 0.5 m, and 1 m x 1 m. However, this system is costly. On the other hand, the aquaponic system uses bamboo as planting media to support mangrove growth in areas with water inundation. There are two planting methods in the aquaponic system, i.e. vertical and horizontal plantings. Vertical planting is a technique following vertical

inundation of depth water, while horizontal planting is a technique following a horizontal layer of water inundation (0 cm, 20 cm, 40 cm, until 100 cm from bottom).

While it is promising as a mangrove rehabilitation approach, not much information is available regarding the effectiveness of aquaponic system of mangrove planting. Therefore, this research aims to analyze the survival rate (measured as living trees compared to the planted ones) of mangroves planted using vertical and horizontal aquaponic system in the north coast of Jakarta, and to investigate the correlation between physico-chemical environmental parameters and the survival and growth rates of the planted mangroves.

## MATERIALS AND METHODS

### Study area and period

This research was conducted in the north coast of Jakarta at four sites (high and permanently water inundation) namely mangrove preservation area, ecotourism area, arboretum area and Galatama rea (Figure 1 and Table 1) (Yulianti and Ariastita, 2012) between 2020 - 2021. There were six observation stations across the studied sites, i.e: mangrove ecotourism (station 1), Angke preservation 1 (station 2), Angke preservation 2 (station 3), Angke preservation 3 (station 4), Arboretum area (station 5) and Galatama Area (Tol sediatmo) (Station 6).

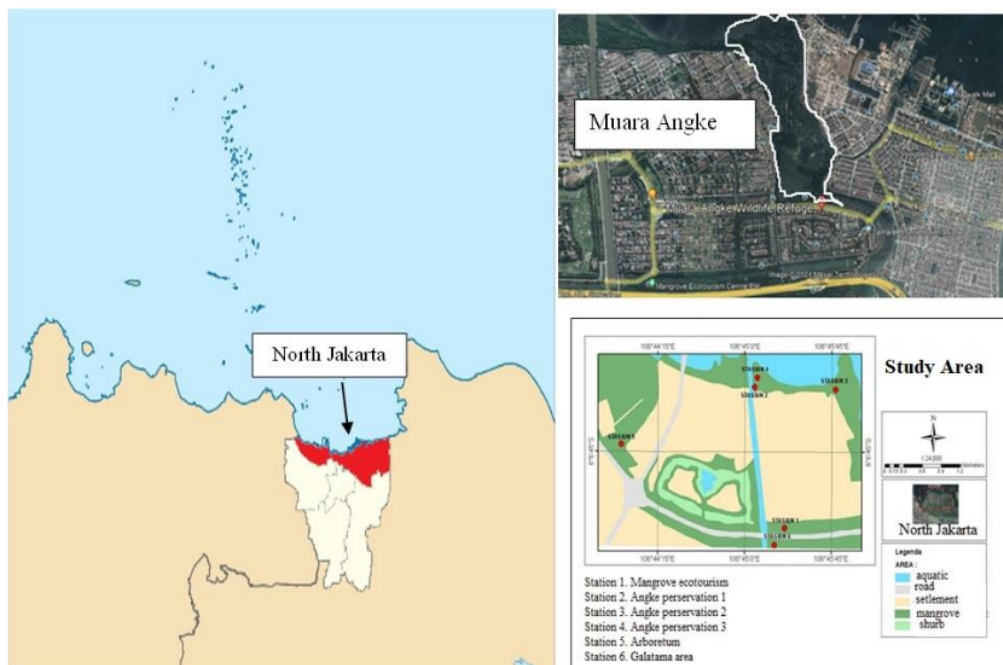


Figure 1. Map of the study area in the north coast of Jakarta, Indonesia (Hilmi et al., 2021 a)

**Table 1.** Description of six observation station across four study area in the north coast of Jakarta, Indonesia

Stations	Site	Utilization of mangrove ecosystem	Coordinates	
			Latitude (S)	Longitude (E)
I	Mangrove ecotourism	Ecotourism area	06°07'18.88"	106°45'18.37"
II	Angke perservation 1	River preservation and greenbelt	06°06'15.50"	106°45'05.41"
III	Angke perservation 2	River preservation and greenbelt	06°06'16.556"	106°45'49.608"
IV	Angke perservation 3	River preservation and greenbelt.	06°06'16.614"	106°45'49.619"
V	Mangrove arboretum	Tidal fooding	06°06'41.386"	106°43'57.374"
VI	Galatama area	Greenbelt	06°07'24.733"	106°45'16.124"

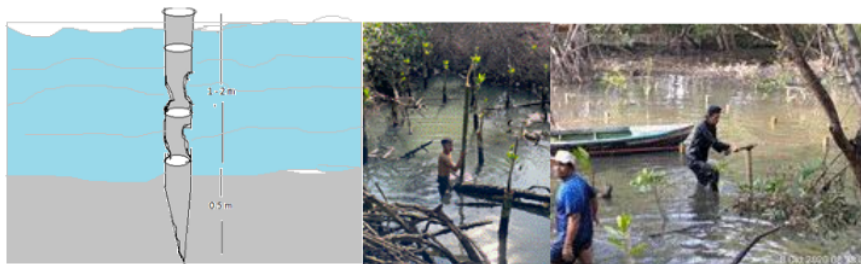
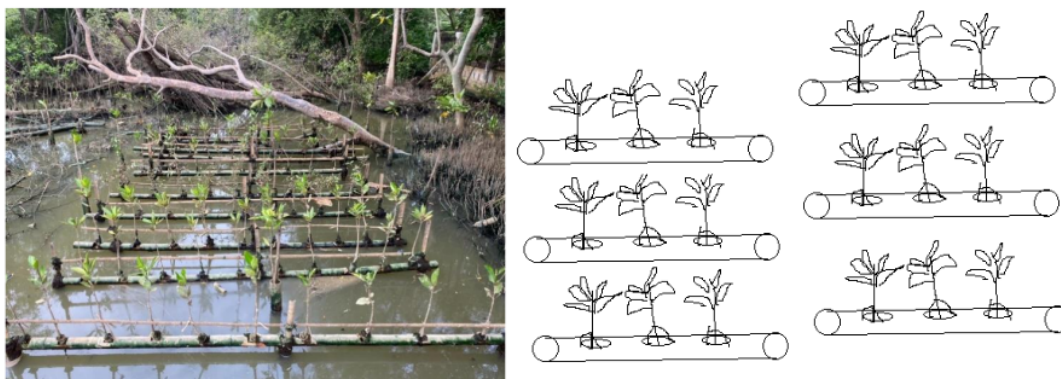
### Description of mangrove planting method

#### Vertical aquaponic system

The vertical aquaponic planting is developed to provide a vertical planting system to support mangrove growth in high water inundation areas using bamboo as planting media (Figure 2). This method can tolerate water inundation between 60 and 200 cm. Mangrove seedlings are planted vertically on the bamboo to support root growth and to reduce the impact of water inundation. The number of bamboo sticks in this system is between 1100-5000 sticks/ha, while the number of mangrove seedlings is between 1650 and 7500 mangrove seedling/ha. In this study, three species, *Rhizophora apiculata*, *Rhizophora mucronata*, and *Rhizophora stylosa*, were planted in the vertical aquaponic system.

#### Horizontal aquaponic system

The horizontal aquaponic system also used bamboos to reduce the impact of tidal inundation and provide planting media for mangrove seedlings (Figure 3). The bamboos are arranged horizontally with a height of 0 cm, 20 cm, 40 cm, 60 cm, 80 cm, and 100 cm from the bottom of the water inundation. One layer of bamboo has length between 1 and 3 meters, and the mangrove seedlings can be planted every 25 cm in the bamboo layer. In this study, five mangrove species were planted in this system, namely *Rhizophora apiculata*, *Rhizophora mucronata* and *Rhizophora stylosa*, *Sonneratia alba* and *Avicennia marina*.

**Figure 2.** Vertical aquaponic system in mangrove planting**Figure 3.** Horizontal aquaponic system in mangrove planting



## Data collection procedure

### Physical and chemical parameters

The physical and chemical parameters of the water and soil in the studied sites were measured as presented in Table 2 (De Valck and Rolfe, 2018; Hilmi et al., 2020; Lunstrum and Chen, 2014). The physical and chemical parameters data were collected from 6 stations, each station with 3 samples plots and each plot consisted 3 replicates. In total, there were 54 samples analyzed.

### Survival rate of planted mangrove

The survival rate (living trees) was calculated using the formula below (Hilmi et al., 2015; Kusmana and Maulina, 2015).

$$\text{Survival rate (living trees) (\%)} = \frac{\text{living trees}}{\text{tree planting}} \times 100\%$$

Beside the survival rate, the root growth rate of the planted mangrove was also measured.

### Growth rate of planted mangrove (height, in cm/month)

The growth rate of planted mangrove was calculated by equation below:

$$\text{The rate growth of height} = h_t - h_{t-1}$$

Where  $h_t$  = (mangrove height t year)

$h_{t-1}$  = (mangrove height t-1 year)

## Data analysis

Data analysis was carried out using (a) correlation analysis between environmental factors and survival rates of the planted mangrove (%); and (b) tabulation data and graphics (Njana, 2020; Willard, 2020). This data analysis was used to describe the growth and survival rates of mangrove plants in each planting system.

## RESULTS AND DISCUSSION

### Physical and chemical parameters

The physical and chemical parameters of mangrove ecosystem in the studied area in north coast of Jakarta are shown Table 3. The area had water temperature between 25.0-30.5°C, water salinity between 6.0-7.5 ppt, water pH of 5.0-6.4, soil pH between 6.0-7.0 with a muddy clay texture, soil nitrate of 11.5-14.5 mg/l, soil phosphate between 8.2-16.0 mg/l and soil pyrite of 1.0-3.0%. This data is not different from Hilmi et al., (2021a) which reported that mangrove ecosystem in Segara Anakan had physical and chemical properties of soil nitrate between 10.0-22.0 mg/l, soil pH between 5.7-6.92, soil texture of clay, loam, loamy clay, mud and mud clay, soil phosphate between 6.85-17.65 mg/l, soil pyrite between 1.03-3.10%, water pH between 5.6-7.07, and water salinity between 0-11 ppt. These conditions show that both studied sites in the north coast of Jakarta and Segara Anakan had similarity of environment factors to support mangrove growth.

According to Shiau et al. (2017) and Yang et al. (2008), basically, the potential soil fertility in North Jakarta had phosphate and nitrate at moderate level and pH was neutral. Therefore, the environmental data (salinity, pH, nitrate, phosphate, and soil texture) suggest that the studied area in north Jakarta had good suitability for supporting mangrove growth (Abdelhakeem et al., 2016; Barreto et al., 2016; Hilmi et al., 2020; Hilmi et al., 2017a; Hilmi et al., 2021b; Tam et al., 2009). Based on the salinity level, the water in the studied in the north coast of Jakarta could be defined as brackish water (Djohan, 2012; Hilmi et al., 2021a; Kusmana and Maulina, 2015; Wang et al., 2019). Furthermore, the data of nitrate and phosphate also indicated that the mangrove ecosystem had good fertility to support mangrove growth (Sharafatmandrad and Mashizi 2020).

**Table 2.** Physical and chemical parameters measured and method of analysis used in this study

No	Physical and chemical parameters	Unit	Tool/method	Sources
1	Temperature	°C	Thermometer	APHA (2005)
2	Salinity	Ppt	Hand refractometer	APHA (2005)
3	pH	Unit	pH meter	APHA (2005)
4	Soil texture	%	Gravimetric	APHA (2005)
5	Pyrite (FeS <sub>2</sub> )	mg/L	Spectrofotometric	Spectrofotometric method
6	Nitrate (NO <sub>3</sub> )	mg/L	Brussin Spectrofotometric	Spectrofotometric method
7	Phosphate (PO <sub>4</sub> )	mg/L	Absorbic acid	ACS publication

**Table 3.** Physical and chemical parameters of mangrove ecosystem in the north coast of Jakarta

Sta tion	Tempera ture (°C)	Water salinity (ppt)	Water pH	Soil pH	Soil texture	Nitrate (mg/l)	Phos phate (mg/l)	Pyrite ( % )	Inundati on (cm)
1	26.5-28.5	6.0-6.5	5.0-5.8	6.0-6.7	Clay -muddy clay	13.0-13.7	8.2-9.0	1.0-1.3	20-50
2	25.5-29.5	7.1-7.5	6.0-6.1	6.1-6.9	Clay -Muddy clay	14.2-14.5	11.5-12.0	2.5-3.0	50-200
3	25.5-29.5	6.0-6.8	5.8-6.4	6.1-6.8	Clay -Muddy clay	11.7-12.0	13.1-13.5	2.5-3.0	50-200
4	25.0-28.5	7.3-7.5	5.5-6.4	6.5-7.0	Clay -Muddy clay	14.7-15.0	12.9-13.3	1.7-2.0	50-200
5	25.0-28.7	6.7-7.0	5.0-6.4	6.1-6.8	Clay -Muddy clay	12.2-13.0	15.0-16.0	1.4-2.0	50-200
6	26.0-30.5	7.1-7.5	5.0-6.4	6.1-7.0	Clay -Muddy clay	11.5-12.0	11.5-12.0	2.0-2.5	30-60

### The survival rate of mangroves planted in the vertical aquaponic system

Planting in the vertical aquaponics system is developed to reduce the impact of highly tidal inundation which provides a different survival and growth rates than the direct planting system. The root growth and survival rate (% of living trees) of mangroves planted in vertical aquaponic systems versus direct systems can be seen in Table 4. The survival rate of mangroves planted in a vertical aquaponic system one year after planting ranged from 66.0-84.7%, while the direct planting system without vertical bamboo media had a survival rate of 13.5-48.5%. The root growth rate of mangrove planted in the vertical aquaponic system was between 15 - 80 %. The majority of mangroves planted in the vertically aquaponic system had excellent survival rate and root growth because the vertical aquaponic system protect the planted mangroves from permanent water inundation (Domínguez-domínguez et al. 2019; Bullock et al. 2017; Hilmi et al. 2021b).

High and permanent water inundation gave negative impact on the survival rate of mangroves planting which can be inferred from the average of survived trees of direct planting in permanent water inundation compared to those of vertical aquaponic system. High and permanent of water inundation in direct planting system caused highly mortality, stunting growth, lower biodiversity and trigger of species domination. Nur and Hilmi (2021) and Hilmi et al. (2021a) explained that tidal waves and water inundation are the primary factors affecting mangrove growth. Water inundation is caused water dynamic occurring due to river discharge and tidal waves (Hilmi et al., 2017a; Suhendra et al., 2018). Basically, water inundation requires a unique adaptation of mangrove vegetation to its environment (Leng and Cao, 2020). Tidal inundation patterns influence mangrove zoning patterns, affinity and clustering (Hilmi et

al. 2021b; Owuor et al. 2019; Leng and Cao 2020), degradation and potential of biodiversity (Owuor et al., 2019), the structure of mangrove ecosystem (Leng and Cao, 2020; Njana, 2020), growth and productivity (Njana, 2020).

### The survival rate of mangroves planted in the horizontal aquaponic system

The survival rate of mangroves planted in the horizontal aquaponic system is presented in Table 5. Horizontal aquaponic is an alternative for mangrove rehabilitation in inundated areas other than gulud system (Yanuartanti et al., 2015) and vertical aquaponic method. This method is much cheaper than the two rehabilitation techniques. The horizontal aquaponic system only costs around 50-85 Indonesian Rupiahs (IDR) per ha compared to vertical aquaponic system with 85–150 million IDR/ha and gulud system with 1-2 billion IDR/ha.

In this study, the horizontal aquaponic system was developed to reduce the impact of permanent inundation on the planted *Rhizophora mucronata*, *Rhizophora apiculata*, *Rhizophora stylosa*, *Avicennia marina* and *Sonneratia caseolaris*. The data showed that the planting system of 80 and 100 cm from the bottom had the highest survival rate between 62-89% compared to planting system with depth of 0 to 60 cm with only survived plants between 0–35 %. Mangroves planted directly in the bottom of flooded areas had the lowest survival rates than horizontal and vertical aquaponic system. The data also showed that *Rhizophora spp* and *Avicennia marina* had the best survival rate when planted in the horizontal aquaponic system due to its unique and good adaptation ability in reducing the impact of high and permanent of water inundation (Yanuartanti, Kusmana, and Ismail 2015; Hilmi et al. 2021a).

**Table 4.** Survival rate (percent of survived trees and mortality) and root growth of mangroves planted in vertical aquaponic system versus direct planting.

Station	Vertical aquaponic system			Direct planting system	
	Survived plants (%)	Mortality (%)	Root growth (%)	Survived plants (%)	Mortality (%)
1	75.0-93.8	6.2-25	15-25	15.0-67.8	33.2-85.0
2	66.7-96.9	3.1-33.3	30-40	15.4-61.2	38.8-84.6
3	69.5-86.4	13.6-30.5	50-60	10.2-51.7	48.3-89.8
4	57.8-69.9	30.1-42.2	70-80	13.2-52.5	47.5-86.8
5	71.5-89.7	10.3-28.5	60-75		
6	55.4-71.5	28.5-44.6	75-80		
Average	66.0-84.7	15.3-34.0	50.0-60.0	13.5-48.5	39.8-86.5

**Table 5.** Survival rate (percent of survived trees) of mangroves planted in vertical aquaponic system versus direct planting.

Planting position (cm)	Survived plants (%)				
	<i>Rhizophora mucronata</i>	<i>Rhizophora apiculata</i>	<i>Rhizophora stylosa</i>	<i>Avicennia marina</i>	<i>Sonneratia caseolaris</i>
0 (direct planting)	0-2	0-3	0-2	0-2	0-1
20	5-10	6-11	4-10	4-8	4-8
40	5-15	5-15	5-15	5-10	5-9
60	11-40	11-39	10-35	10-25	10-24
80	70-83	72-85	72-85	60-75	60-74
100	74-89	76-90	75-89	63-78	62-77

**Table 6.** Distribution of mangrove height and height growth rate of planted mangrove in the aquaponic system

Height class (cm)	Composition (%)	Height growth rate (cm/month)
40-60	3.5	1.60
60-80	26.7	0.95
80-100	39.1	1.11
100-120	9.4	1.43
120-140	7.9	2.33
140-160	13.4	2.17

**Table 7.** Correlation between environmental factors and mangrove growth in the aquaponic rehabilitation system

	Temperature	Water salinity	Soil salinity	Water pH	Soil pH	Nitrate	Phosphate	Pyrite
Temperature	1							
Water salinity	-0.02337	1						
Soil salinity	0.03286	0.880229	1					
Water pH	-0.15457	0.37467	0.687271	1				
Soil pH	-0.30391	0.795494	0.864736	0.452754	1			
Nitrate	-0.56592	0.410441	0.313013	0.164777	0.478449	1		
Phosphate	-0.49393	0.298327	0.318708	0.491381	0.3323	-0.15758	1	
Pyrite	0.317254	0.324329	0.602198	0.867862	0.17818	-0.16565	0.311892	1
Survival rate	-0.14724	-0.66361	-0.74117	-0.18515	-0.82787	0.006529	-0.19086	-0.12717

Note: the shaded text shows high correlation

#### Height class and height growth rate of mangroves planted in aquaponic system

The mangroves planted in the aquaponic system was grouped based on height classes as presented in Table 6. Table 6 showed that the average height growth of mangrove planting reached 1.6 cm/month (range between 0.95-2.33 cm/month). This result suggests the potential of mangrove growth in the aquaponic rehabilitation system in which mangrove must have sufficient height growth as an adaptation in permanent water inundation (Hilmi et al. 2021; Lu et al. 2013).

Basically, the permanent and high water inundation are important factors of mangrove species to develop adaptation ability to reduce impact of water inundation. The height growth has correlation with the ability of mangrove to support root growth which affect the ability of mangrove in getting oxygen supply to support root respiration and metabolism. Mangroves need oxygen supply in anaerobic conditions as major growth inhibitor (Asaeda and Barnuevo, 2019; Dai et al., 2018).

#### Correlation between environment factors and mangrove growth

Correlation analysis of environmental factors showed that temperature, pH and salinity had a high impact on supporting mangrove growth (Table 7).

Soil salinity, soil temperature, soil water pH, soil pH, and soil texture strongly influenced mangrove growth (Hilmi et al., 2020). Similarly, nitrate and phosphate also have a high influence to support mangrove growth in West and East Segara Anakan (Hilmi, et al. 2019a; Ariani, Effendi, and Suprihatin 2016; Neal et al. 2018). In contrast, pyrite is an inhibitor of mangrove growth (Barreto et al., 2016). However, in this study, only salinity, pH and temperature were essential in supporting mangrove growth. Mangrove vegetation need specific adaptation to reduce

impact of water salinity and water inundation with activity of excreting, accumulating and reducing the salinity. Mangrove also develop pneumatophore root to reduce impact of anaerob condition, because the high and permanent of water inundation.

In conclusion, the mangrove rehabilitation area in the north coast of Jakarta had high water inundation which reached 200 cm. The vertical and horizontal aquaponic systems developed to reduce the impact of water inundation provided a higher growth rate and survival rate than the direct planting system. Planting mangrove using the horizontal aquaponic system at 80 and 100 cm from the bottom had the highest survival rate compared to planting at 0 to 60 cm. *Rhizophora spp* and *Avicennia marina* had high adaptability to support vertical and horizontal aquaponic systems. Water salinity, soil salinity and water pH had a high correlation in supporting mangrove growth and survival in the aquaponic system.

#### ACKNOWLEDGEMENTS

The authors express gratitude to Dr. Ir. Isdy Sulystio, DEA (Dean of Fisheries and Marine Science Faculty Unsoed), LPPM Unsoed who supported the grant *R&D Terapan* (2021 and 2022) and to colleague researchers for providing their advice for this research. We would also like to thank anonymous reviewers for their helpful and constructive comments which greatly helped us improving our manuscript. We declare that this paper don't have any conflict of interest.

## REFERENCES

- Abdelhakeem SG, Abouloos SA, Kamel MM. 2016. Performance of a vertical subsurface flow constructed wetland under different operational conditions. *J Arid Environ* 7 (5): 803-814. DOI: 10.1016/j.jare.2015.12.002.
- Abdullah K, Said AM, Omar D. 2014. Community-based Conservation in Managing Mangrove Rehabilitation in Perak and Selangor. *Procedia - Social and Behavioral Sciences* 153: 121-131. DOI: 10.1016/j.sbspro.2014.10.047.
- Abubakar S, Kadir M, Akbar N, Tahir I. 2018. Asosiasi dan Relung Mikrohabitat Gastropoda pada Ekosistem Mangrove di Pulau Sibul Kecamatan Oba Utara Kota Tidore Kepulauan Provinsi Maluku Utara. *Jurnal Enggano* 3 (1): 22-38.
- Andriyani N, Mahdiana A, Hilmi E, Kristian S. 2020. The Correlation Between Plankton Abundance and Water Quality in Donan River. *OMNI Akuatika*, special is 3: 14-20.
- Ariani F, Effendi H, Suprihatin. 2016. Water and sediment oil content spread in Dumai coastal waters, Riau Province, Indonesia. *Egypt J Aquat Res* 42 (4): 411-416. DOI: 10.1016/j.ejar.2016.08.005.
- Asaeda T, Barnuevo, A. 2019. Oxidative stress as an indicator of niche-width preference of mangrove *Rhizophora stylosa*. *Forest Ecology and Management* 432: 73-82. DOI: 10.1016/j.foreco.2018.09.015.
- Barreto MB, Lo Mónaco S, Díaz R, Barreto-Pitol E, López L, Peralba M, do CR. 2016. Soil organic carbon of mangrove forests (*Rhizophora* and *Avicennia*) of the Venezuelan Caribbean coast. *Organic Geochemistry* 100: 51-61. DOI: 10.1016/j.orggeochem.2016.08.002.
- Bomer EJ, Wilson CA, Hale RP, Hossain ANM, Rahman FMA. 2020. Surface elevation and sedimentation dynamics in the Ganges-Brahmaputra tidal delta plain, Bangladesh: Evidence for mangrove adaptation to human-induced tidal amplification. *Catena* 187: 104312. DOI: 10.1016/j.catena.2019.104312.
- Bullock EL, Fagherazzi S, Nardin W, Vo-Luong P, Nguyen, Woodcock CE. 2017. Temporal patterns in species zonation in a mangrove forest in the Mekong Delta, Vietnam, using a time series of Landsat imagery. *Continental Shelf Research* 147: 144-154. DOI: 10.1016/j.csr.2017.07.007.
- Cameron C, Hutley LB, Friess DA, Brown B. 2019. High greenhouse gas emissions mitigation benefits from mangrove rehabilitation in Sulawesi, Indonesia. *Ecosyst Serv* 40: 101035. DOI: 10.1016/j.ecoser.2019.101035.
- Cochard R. 2017. Coastal Water Pollution and its Potential Mitigation by Vegetated Wetlands: An Overview of Issues in Southeast Asia. In *Redefining Diversity and Dynamics of Natural Resources Management in Asia* (Vol. 1). Elsevier Inc. DOI: 10.1016/B978-0-12-805454-3.00012-8.
- Dai Z, Trettin CC, Frolking S, Birdsey RA. 2018. Mangrove carbon assessment tool: Model development and sensitivity analysis. *Estuarine, Coastal and Shelf Science* 208: 23-35. DOI: 10.1016/j.ecss.2018.04.035.
- De Valck J, Rolfe J. 2018. Linking water quality impacts and benefits of ecosystem services in the Great Barrier Reef. *Mar Pollut Bull* 130: 55-66. DOI: 10.1016/j.marpolbul.2018.03.017.
- Djohan TS. 2012. The Disturbed Ecosystem of Segara Anakan, Central Java. *J. Manusia Dan Lingkungan* 19 (3): 294-302.
- Domínguez-domínguez M, Zavala-cruz J, Rincón-ramírez JA, Martínez-zurimendi P. 2019. Management Strategies for the Conservation, Restoration and Utilization of Mangroves in Southeastern Mexico. *Wetlands* 39: 907-919 DOI: DOI: 10.1007/s13157-019-01136-z.
- Duncan C, Primavera JH, Pettorelli N, Thompson JR, Loma RJA, Koldewey HJ. 2016. Rehabilitating mangrove ecosystem services: A case study on the relative benefits of abandoned pond reversion from Panay Island, Philippines. *Marine Pollution Bulletin* 109 (2): 772-782. DOI: 10.1016/j.marpolbul.2016.05.049.
- Giri C, Long J, Abbas S, Murali RM, Qamer FM, Pengra B, Thau D. 2015. Distribution and dynamics of mangrove forests of South Asia. *J Environ Manage* 148: 101-111. DOI: 10.1016/j.jenvman.2014.01.020.
- Hilmi E. 2018. Mangrove landscaping using the modulus of elasticity and rupture properties to reduce coastal disaster risk. *Ocean and Coastal Management* 165: 71-79. DOI: 10.1016/j.ocecoaman.2018.08.002.
- Hilmi E, Kusmana C, Suhendang E, Iskandar I. 2017a. Correlation Analysis Between Seawater Intrusion and Mangrove Greenbelt. *Indonesian Journal of Forestry Research* 4 (2): 151-168. DOI: 10.20886/ijfr.2017.4.2.151-168.
- Hilmi E, Sari LK, Amron. 2020. Distribusi Sebaran Mangrove Dan Faktor Lingkungan Pada Ekosistem Mangrove Segara Anakan Cilacap. *Prosiding Seminar Nasional "Pengembangan Sumber Daya Perdesaan Dan Kearifan Lokal Berkelanjutan IX"* 19-20 November 2019. [Indonesian]
- Hilmi E, Sari LK, Amron Cahyo TN, Sahri Siregar A. 2021a. Mangrove cluster as adaptation pattern of mangrove ecosystem in Segara Anakan Lagoon. *IOP Conference Series: Earth and Environmental Science* 746 (1): 012022. DOI: 10.1088/1755-1315/746/1/012022.
- Hilmi E, Sari LK, Cahyo TN, Kusmana C, Suhendang E. 2019. Carbon sequestration of mangrove ecosystem in Segara Anakan Lagoon, Indonesia. *BIOTROPIA: The Southeast Asian Journal of Tropical Biology* 26 (3): 181-190. <https://journal.biotrop.org/index.php/biotropia/article/view/1099/555>.
- Hilmi E, Sari LK, Cahyo T, Mahdiana A, Samudra SR. 2021b. The affinity of mangrove species using Association and Cluster Index in North Coast of Jakarta and Segara Anakan of Cilacap Indonesia. *Biodiversitas* 22 (7): 2907-2918. DOI: 10.13057/biodiv/d220743.
- Hilmi E, Sari LK, Siregar AS, Sulisty I, Mahdiana A, Junaidi T, Muslih, Pertiwi, RPC, Samudra SR, Prayogo NA. 2021c. Tannins in mangrove plants in segara anakan lagoon, central java, indonesia. *Biodiversitas* 22 (8): 3508-3516. DOI: 10.13057/biodiv/d220850.
- Hilmi E, Siregar AS, Febryanni L. 2015. Struktur Komunitas, Zonasi Dan Keanekaragaman Hayati Vegetasi Mangrove Di Segara Anakan Cilacap. *Omni-Akuatika* 11 (2): 20-32. DOI: 10.20884/1.0a.2015.11.2.36.
- Hilmi E, Siregar AS, Syakti AD. 2017b. Lead (Pb) distribution on soil, water and mangrove vegetation matrices in Eastern Part of Segara Anakan Lagoon, Cilacap. *Omni-Akuatika* 13 (2): 25-38.
- Jakovac CC, Latawiec AE, Lacerda E, Leite Lucas I, Korys KA, Iribarrem A, Malaguti GA, Turner RK, Luisetti T, Baeta Neves Strassburg B. 2020. Costs and Carbon Benefits of Mangrove Conservation and Restoration: A Global Analysis. *Ecological Economics* 176 (October 2019). DOI: 10.1016/j.ecolecon.2020.106758.
- Krauss KW, Allen JA. 2003. Factors influencing the regeneration of the mangrove *Bruguiera gymnorhiza* (L.) Lamk. on a tropical Pacific island. *For Ecol Manage* 176 (1-3): 49-60. DOI: 10.1016/S0378-1127(02)00219-0.
- Kusmana C, Maulina S. 2015. the Growth Responses of Bakau (*Rhizophora mucronata* Lamk.) Seedling on Various Inundations of Level and Duration Respon Pertumbuhan Semai Bakau (*Rhizophora mucronata* Lamk.) Terhadap Tingkat Kedalaman Dan Lama Penggenangan. *Jurnal Silviculture Tropika* 5 (3): 155-159.
- Kusumahadi K, Yusuf A, Maulana R. 2020. Analisis Keanekaragaman Jenis Vegetasi Mangrove di Kawasan Hutan Lindung Angke-Kapuk dan Taman Wisata Alam Angke-Kapuk Muara Angke Kota Jakarta Utara. *Jurnal Ilmu Dan Budaya* 41 (69): 8123..
- Leng B, Cao KF. 2020. The sap flow of six tree species and stand water use of a mangrove forest in Hainan, China. *Global Ecology and Conservation*, 24: e01233. DOI: 10.1016/j.gecco.2020.e01233.
- Lu W, Chen L, Wang W, Fung-Yee Tam N, Lin G. 2013. Effects of sea level rise on mangrove *Avicennia* population growth, colonization and establishment: Evidence from a field survey and greenhouse manipulation experiment. *Acta Oecologica* 49: 83-91. DOI: 10.1016/j.actao.2013.03.009.
- Lunstrum A, Chen L. 2014. Soil carbon stocks and accumulation in young mangrove forests. *Soil Biol Biochem* 75: 223-232. DOI: 10.1016/j.soilbio.2014.04.008.
- M Brander LJ, Wagtenonk AS, Hussain S, McVittie A, Verburg PH, de Groot RS, van der Ploeg S. 2012. Ecosystem service values for mangroves in Southeast Asia: A meta-analysis and value transfer application. *Ecosystem Services* 1 (1): 62-69. DOI: 10.1016/j.ecoser.2012.06.003.
- Marois, D. E., & Mitsch, W. J. (2017). A mangrove creek restoration plan utilizing hydraulic modeling. *Ecological Engineering* 108: 537-546. DOI: 10.1016/j.ecoleng.2017.06.063.
- Masni, Ahidin, Darlian L. 2016. Gastropoda dan Bivalvia Epifauna yang Berasosiasi dengan Mangrove di Desa Pulau Tambako Kecamatan Mataoleo Kabupaten Bombana. *Jurnal AMPIBI* 1 (1): 27-32.
- Miettinen J, Shi C, Liew SC. 2016. Land cover distribution in the peatlands of Peninsular Malaysia, Sumatra and Borneo in 2015 with changes since 1990. *Global Ecology and Conservation* 6: 67-78. DOI: 10.1016/j.gecco.2016.02.004.
- Munji CA, Bele MY, Nkwatoh AF, Idinoba ME, Somorin OA, Sonwa DJ. 2013. Vulnerability to coastal flooding and response strategies: The



- case of settlements in Cameroon mangrove forests. *Environmental Development* 5 (1): 54-72. DOI: 10.1016/j.envdev.2012.10.002.
- Neal L, Linse K, Brasier MJ, Sherlock E, Glover AG. 2018. Comparative marine biodiversity and depth zonation in the Southern Ocean: evidence from a new large polychaete dataset from Scotia and Amundsen seas. *Marine Biodiversity* 48 (1): 581-601. DOI: 10.1007/s12526-017-0735-y
- Njana MA. 2020. Structure, growth, and sustainability of mangrove forests of mainland Tanzania. In *Global Ecology and Conservation* 24: e01394 DOI: 10.1016/j.gecco.2020.e01394.
- Nur SH, Hilmi E. 2021. The correlation between mangrove ecosystem with shoreline change in Indramayu coast. *IOP Conference Series: Earth and Environmental Science* 819 (1): 1-7. DOI: 10.1088/1755-1315/819/1/012015.
- Onrizal, Rugayah, Suhardjono. 2005. Flora Mangrove Berhabitus Pohod di Hutan Lindung Angke-Kapuk. *Jurnal Biodiversitas* 6 (1): 34-39. [Indonesian]
- Owuor MA, Mulwa R, Otieno P, Icely J, Newton A. 2019. Valuing mangrove biodiversity and ecosystem services: A deliberative choice experiment in Mida Creek, Kenya. *Ecosystem Services* 40: 101040. DOI: 10.1016/j.ecoser.2019.101040.
- Rachmawati D, Setyobudiandi I, Hilmi E. 2014. Potensi Estimasi Karbon Tersimpan pada Vegetasi Mangrove di Wilayah Pesisir Muara Gembong Kabupaten Bekasi. *Jurnal Omni-Akuatika*, XIII 19: 85-91.
- Ruzol CD, Camacho ACD, Sabino LL., Garcia JE, Gevaña DT, Camacho LD. 2020. A materialist-idealist divide? Policy and practice in participatory mangrove rehabilitation in the Philippines. *Environmental Science and Policy* 112: 394-404. DOI: 10.1016/j.envsci.2020.06.026.
- Sharafatmandrad, M., & Mashizi, K. A. (2020). Investigating distribution of ecosystem services in rangeland landscapes: an approach based on weighted key functional traits. *Ecological Indicators* 111: 105971. DOI: 10.1016/j.ecolind.2019.105971.
- Shiau YJ, Lee SC, Chen TH, Tian G, Chiu CY. 2017. Water salinity effects on growth and nitrogen assimilation rate of mangrove (*Kandelia candel*) seedlings. *Aquatic Botany* 137: 50-55. DOI: 10.1016/j.aquabot.2016.11.008
- Suhendra, Amron A, Hilmi E. 2018. The pattern of coastline change based on the characteristics of sediment and coastal slope in Pangenan coast of Cirebon, West Java. *E3S Web of Conferences* 47: 06001. DOI: 10.1051/e3sconf/20184706001.
- Taillardat P, Ziegler AD, Friess DA, Widory D, Truong Van V, David F, Thành-Nho N, Marchand C. 2018. Carbon dynamics and inconstant porewater input in a mangrove tidal creek over contrasting seasons and tidal amplitudes. *Geochimica et Cosmochimica Acta* 237: 32-48. DOI: 10.1016/j.gca.2018.06.012.
- Tam NFY, Wong YS, Wong MH. 2009. Novel technology in pollutant removal at source and bioremediation. *Ocean and Coastal Management* 52 (7): 368-373. DOI: 10.1016/j.ocecoaman.2009.04.009.
- van Wesenbeeck BK, Balke T, van Eijk P, Tonneijck F, Sire HY, Rudianto ME, Winterwerp JC. 2015. Aquaculture induced erosion of tropical coastlines throws coastal communities back into poverty. *Ocean Coastal Manage* 116: 466-469. DOI: 10.1016/j.ocecoaman.2015.09.004.
- Wang Y, Ying H, Yin Y, Zheng H, Cui Z. 2019. Estimating soil nitrate leaching of nitrogen fertilizer from global meta-analysis. *Sci Total Environ* 657: 96-102. DOI: 10.1016/j.scitotenv.2018.12.029.
- Willard CA. 2020. *Statistical Methods (An Introduction to Basic Statistical Concepts and Analysis)* (2nd Edition). Routledge, Taylor and Francis group.
- Yang Q, Tam NFY, Wong YS, Luan TG, Su WS, Lan CY, Shin PKS, Cheung SG. 2008. Potential use of mangroves as constructed wetland for municipal sewage treatment in Futian, Shenzhen, China. *Marine Pollution Bulletin* 57 (6-12): 735-743. DOI: 10.1016/j.marpolbul.2008.01.037
- Yanuartanti IW, Kusmana C, Ismail A. 2015. Feasibility Study of Mangrove Rehabilitation using Guludan Technique in Carbon Trade Perspective in Protected Mangrove Area in Muara Angke, DKI Jakarta Province. *Journal of Natural Resources and Environmental Management* 5 (2): 180-186. DOI: 10.19081/jpsl.5.2.180.
- Ysebaert T, van der Hoek DJ, Wortelboer R, Wijsman JWM, Tangelder M, Nolte A. 2016. Management options for restoring estuarine dynamics and implications for ecosystems: A quantitative approach for the Southwest Delta in the Netherlands. *Ocean Coastal Manage* 121: 33-48. DOI: 10.1016/j.ocecoaman.2015.11.005.
- Yulianti R, Ariastita P. 2012. Arahana Pengendalian Konversi Hutan Mangrove Menjadi Lahan Budidaya di Kawasan Segara Anakan. *Jurnal Teknik ITS*, 1 (1): 1-7. [Indonesian]
- Zhang Y, Xiao , Guan, D, Chen Y, Motelica-Heino M, Peng Y, Lee SY. 2021. The role of mangrove fine root production and decomposition on soil organic carbon component ratios. *Ecological Indicators* 125: 107525. DOI: 10.1016/j.ecolind.2021.107525.

# Survival and growth rates of mangroves planted in vertical and horizontal aquaponic systems in North Jakarta, Indonesia

## ORIGINALITY REPORT

7%

SIMILARITY INDEX

7%

INTERNET SOURCES

0%

PUBLICATIONS

0%

STUDENT PAPERS

## PRIMARY SOURCES

1

[biodiversitas.mipa.uns.ac.id](http://biodiversitas.mipa.uns.ac.id)

Internet Source

7%

Exclude quotes On

Exclude bibliography On

Exclude matches < 3%