

# 13

*by* Ismoyowati Ismoyowati

---

**Submission date:** 01-Oct-2022 08:51PM (UTC+0700)

**Submission ID:** 1913724234

**File name:** 13\_Prolactin\_gene\_polymorphisms.pdf (2.43M)

**Word count:** 8070

**Character count:** 39454

## Prolactin gene polymorphisms and associations with reproductive traits in Indonesian local ducks

26

Dattadewi Purwantini<sup>1</sup>, R. Singgih Sugeng Santosa<sup>1</sup>, Setya Agus Santosa<sup>1</sup>, Agus Susanto<sup>1</sup>, Dewi Puspita Candrasari<sup>2</sup> and Ismoyowati Ismoyowati<sup>1</sup>

Faculty of Animal Science, University of Jenderal Soedirman, Indonesia.

**Corresponding author:** Dattadewi Purwantini, e-mail: [dattadewi2002@yahoo.com](mailto:dattadewi2002@yahoo.com)

**Co-authors:** RSSS: [singgihugengsantosa4@gmail.com](mailto:singgihugengsantosa4@gmail.com), SAS: [setya.ags@gmail.com](mailto:setya.ags@gmail.com),

AS: [agus.susanto0508@soed.ac.id](mailto:agus.susanto0508@soed.ac.id), DPC: [depechandra@gmail.com](mailto:depechandra@gmail.com), II: [moy.moyowati@gmail.com](mailto:moy.moyowati@gmail.com)

**Received:** 09-05-2020, **Accepted:** 28-09-2020, **Published online:** 03-11-2020

**doi:** [www.doi.org/10.14202/vetworld.2018.2301-2311](http://www.doi.org/10.14202/vetworld.2018.2301-2311) **How to cite this article:** Purwantini D, Santosa RSS, Santosa SA, Susanto A, Candrasari DP, Ismoyowati I (2020) Prolactin gene polymorphisms and associations with reproductive traits in Indonesian local ducks, *Veterinary World*, 13(11): 2301-2311.

### Abstract

**Background and Aim:** Reproductive traits play an important role in population increases and the egg production (EP) abilities of Indonesian local ducks (ILD). The prolactin (*PRL*) gene is a single chain polypeptide hormone belonging to a family of growth hormone genes that are mainly synthesized in the anterior pituitary gland in all vertebrates. It has a significant effect on reproductive traits and EP. Single nucleotide polymorphisms (SNPs) present in *PRL* are a useful molecular marker for EP. This study aimed to identify the *PRL* polymorphisms based on these SNPs and to uncover the associations with reproductive traits in ILD.

**Materials and Methods:** A total of 280 ILDs consisting of Tegal and Magelang (F0) ducks and their reciprocal crosses, namely, Gallang (F1) and Maggal (F1), were maintained and specific variables were recorded, that is, age at first egg, body weight at first egg, first egg weight, and EP, for 90 days. Allele and genotype frequencies were used to determine the Hardy-Weinberg (H-W) equilibrium. The association between the SNP genotypes of *PRL* and reproductive traits was analyzed using one-way analysis of variance, following the GLM procedure of SAS. The genotypic effects on the reproductive traits were determined using regression analysis.

**Results:** This study successfully amplified a polymerase chain reaction product of 190 bp, which was used to identify the SNP. Results indicated that *PRL* in ILDs is polymorphic. A SNP was found at position 164 nt (c.164G >A), consisting of three different genotypes, namely, GG, GA, and AA. The genotypes of Tegal and Magelang (F0), and Gallang (F1) populations were not in H-W equilibrium. The Maggal population (F1) was in H-W equilibrium. Significant associations were detected between the genotypes and EP in all ILDs ( $p < 0.01$ ), following a regression line of  $y = 2.337x + 64.605$ , with a determination coefficient of 0.0188 ( $r^2 = 0.0188$ ).

**Conclusion:** *PRL* can be recommended as a candidate gene for reproductive traits in ILD, especially EP.

**Keywords:** egg production, Magelang, Prolactin gene, reciprocal mating, single nucleotide polymorphisms, Tegal.

### Introduction

Indonesian local duck (ILD) germ plasma is an important Indonesian source of protein (eggs and meat) and income for rural communities, contributing 14.72% or 290.10 thousand tons of the national egg demand [1]. Another advantage of ducks compared to other birds is their high adaptability to the novel environments, simplifying production in almost all regions of Indonesia [2]. ILD's reared by the majority of rural communities are mostly Tegal and Magelang ducks, the growing types in the Central Java Province, which exhibit improved egg production (EP) [3]. Duck farming in Indonesia is a government program that aims to increase its population and production capabilities by improving production and

reproduction. Reciprocal crossing between Tegal and Magelang ducks can be performed to obtain offspring with superior reproductive ability and increased EP percentages. The crossing of Tegal drakes with Magelang ducks is called Gallang. The crossing of Magelang drakes with Tegal ducks is called Maggal [4]. Crossings are done as a production strategy to exploit the resultant hybrid vigor (heterosis) in an effort to increase livestock productivity. The Indonesia local ducks and the reciprocal crossings are presented in Figure-1.

Population genetic diversity and polymorphisms form the basis of breeding application technologies in livestock utilization. The phenotypic variation of a population expressed as a quantitative characteristic is the reflection of the population's genetic makeup. *PRL* is a single chain polypeptide hormone belonging to a family of growth hormone genes that are mainly synthesized in the anterior pituitary gland in all vertebrates [5,6]. Specifically, by lactotrophic cells produced in pituitary gonadotropins, promoting gonad growth, steroidogenesis, gametogenesis, and ovulation in all vertebrates [7]. Prolactin (*PRL*) has

Copyright: Purwantini, et al. Open Access. This article is distributed under the terms of the Creative Commons Attribution 4.0 International License (<http://creativecommons.org/licenses/by/4.0/>), which permits unrestricted use, distribution, and reproduction in any medium, provided you give appropriate credit to the original author(s) and the source, provide a link to the Creative Commons license, and indicate if changes were made. The Creative Commons Public Domain Dedication waiver (<http://creativecommons.org/publicdomain/zero/1.0/>) applies to the data made available in this article, unless otherwise stated.

a significant effect on reproductive traits and EP [6] related to the post-mating phase of the reproductive cycle [7]. Expression of *PRL* is regulated by sequences in the 5'-flanking region through binding to specific transcription factors [8]. Other proteins are also and important in regulating *PRL* expression through certain promoter binding sites.

The *PRL* gene is associated with the reproductive traits of ducks, including egg shell strength, EP, and egg weight, the genes of which are located in exon 2, 4, and 5, respectively [6]. Chicken *PRL* single nucleotide polymorphisms (SNPs) are located in exon 5, are significantly associated with parent behavior and EP [9], and are useful as molecular markers for EP in chickens [8,10]. However, research on the association of *PRL* SNPs with reproductive traits in ILD populations, especially Tegal and Magelang (F0), and the reciprocal crosses (F1), has not been done.

This study aimed to identify the *PRL* SNP and its association with the reproductive traits of Indonesia's local duck populations. This research intends to obtain genetic markers based on *PRL* SNPs that can be used as a basis for early selection of local ducks and to provide important references for the improvement of biomolecular-based genetic quality in ILD breeding programs.

## Materials and Methods

### Ethical approval

The experimental protocols were approved by the Animal Ethics Committee, Jenderal Soedirman University No. 158/UN.23/14/PN.01.00/2019.

### Study period, location, Animals and sampling

The study included 280 female Tegal (F0) and Magelang (F0) ducks, and their reciprocal crosses, namely, Gallang (F1) and Maggal (F1) each with equal numbers (70 animals) and of the same age (4-months-old) were collected from March 2019 to February 2020. The population was reared at an experimental farm of Faculty of Animal Science, University of

Jenderal Soedirman, Indonesia, under uniform management regarding ethical animal standards. The pen mating model with an open-sided house system was equipped with individual nesting chambers of 1.5×1.5 m/pen. Forty pens were used in the study, each of which contained one male and seven females. Laying ducks were given (Table-1) a 160 g/head feed per day and drinking water was available *ad libitum*. The reproductive traits observed included age at first egg (AFE), body weight at first egg (BW), first egg weight (FEW), and EP for 90 days. The AFE was obtained from individual records of the hatching dates up until the first egg laying. The duck body weights were measured when the first egg was laid to obtain BW. Eggs were also weighed to obtain the FEW. The EP was obtained by adding the number of eggs each duck laid within 90 days from the 1<sup>st</sup> day of egg laying.

$$EP = \frac{\text{number of eggs laid within 90 days}}{90} \times 100\%.$$

### DNA isolation, primer design, and polymerase chain reaction (PCR) amplification

DNA genomes were isolated from 280 4-month-old local ducks by drawing blood samples and using the DNA Isolation Kit High Pure PCR template preparation (Geneaid, Taiwan), according to the manufacturer's protocol. Isolated DNA was used as a PCR template without the purification process. The primary design of oligonucleotides specific for the *PRL* gene was based on data from GenBank (JQ677091.1, 2012), namely, *Anas platyrhynchos*. Primer pairs were identified in the conserved area and analyzed using Oligoprimersign Software with an Online Primer3 program ([http://www-genome.wi.mit.edu/cgi-bin/primer3.cgi/results\\_from-primer3](http://www-genome.wi.mit.edu/cgi-bin/primer3.cgi/results_from-primer3)). The primer pairs used were forward *PRL*-AnasPF primers, namely: L 2294 5'-ATAACGCCTCTCCTTGCTGA-3', and reverse *PRL*-AnasPR, namely: H 2463 5'-TTTCCTCCCCCTCTGTCT-3'. A PCR product of 190 bp was amplified, sequenced, and analyzed. The



**Figure-1:** Indonesian local ducks (a). Magelang duck, (b). Tegal ducks, (c). Gallang duck, (d). Magal duck.

**Table-1:** Composition and nutrient content of laying ducks feed.

Feed stuffs	Feed content (%)
Corn	35.0
Fishmeal	10.0
Rice bran	45.0
Meat bone meal	7.0
Milled corn cobs	2.0
Premix	1.0
Sal	100
<b>Feed nutrient content</b>	
Crude protein (%)	16.95
ME (kcal/kg)	2.876
Crude fiber (%)	7.86
Crude fat (%)	8.07
Ca (%)	0.56
P (%)	0.97

Source: Calculation based on NRC (2004) and proximate (2019). ME=Metabolisable energy, Ca=Calcium, P=Phosphor



amplification process was performed through PCR using the GeneAmpR PCR system thermocycler 2400 (Perkin Elmer). The PCR reagent mixture consisted of 5 µL KAPA (PCR Kit), 1 µL (10 pmol/µL) of each primer, 9.5 µL dH<sub>2</sub>O free nuclease, and 1 µL DNA template, with a total volume of 25 µL. The PCR cycle consisted of four stages, namely: Pre-denaturation at 94°C for 5 min, denaturation at 94°C for 30 s, annealing at 55°C for 45 s, elongation (extension) at 72°C for 1 min, and post elongation at 72°C for 5 min, which was repeated for 35 cycles. The PCR product was separated by electrophoresis in low melting agarose gel 1% and 1×TBE buffer in the Submarine Electrophoresis device (Hoefer, USA) at 50 V for 15 min. The PCR products were then visualized by UV illumination.

#### DNA sequencing

PCR products were sequenced using the same primers (*PRL*-AnasPF and *PRL*-AnasPR). The sequencing process was performed by PT Genetics Science Indonesia. The sequencing product was read using Sequence Scanner v1.0 software, in the form of an electropherogram consisting of nucleotide sequences from the *PRL* gene samples of Tegal and Magelang ducks (F0), and their reciprocal crosses (F1). Each nucleotide produces peaks with different colors on an electropherogram, that is, adenine (A)=Green, guanine (G)=Black, cytosine (C)=Blue, and thymine (T)=Red.

#### Polymorphism identification and genotyping

*PRL* gene polymorphisms were determined using the BioEdit v7.2.0 program (<https://bioedit.software.informer.com/7.2/>) by aligning the sequencing results to those obtained from GenBank (JQ677091.1) using the ClustalW (accessory application) option. Alignment results were viewed on the electropherogram so that the SNP is obtained at a certain position, which was then used to determine the genotype of each individual, for example, on SNP c.164G >A, alleles G, and A were observed so that there were three pairs of genotypes, namely, GG, GA, and AA for the entire data population. Individuals with genotypes that have the same allele pairs are called homozygotes, while differing allele pairs are called heterozygotes.

#### Statistical analysis

Genotype and gene frequencies were calculated based on Pichner [11] using the formula

$$F_{AN} = \frac{\sum locus_{An}}{\sum locus_{A1} + \sum locus_{A2} + \sum locus_{An}}, \text{ where } F_{An}$$

is frequency of gene A at the  $n^{th}$  locus, which were then used to test population equilibrium based on the Hardy-Weinberg (H-W) principle. Pearson's Chi-square test was used to verify that the samples did not deviate from H-W equilibrium. The test statistics

$$\text{were computed using the formula } X^2 = \sum_{i=1}^n \frac{(O_i - E_i)^2}{E_i},$$

where  $X^2$  represents the Chi-square value,  $O_i$  the

observed frequency,  $E_i$  the expected frequency, and  $n$  the number of possible outcomes for each event [12].

#### *PRL* gene polymorphism associated with reproductive traits

The mean and standard deviations of reproductive traits were calculated for each breed and genotype. Genotypic associations with reproductive traits were determined using one-way analysis of variance in the GLM procedure of SAS Institute (2001), according to the following model:

$$Y = \mu + G + e$$

where  $Y$ =dependent variables,  $\mu$ =population mean,  $G$ =genotypes' effect on reproductive traits, and  $e$ =error term. If a genotype or haplotype was found to be significantly on reproductive traits, then a Tukey test was performed using a significance level of  $p < 0.05$  and  $p < 0.01$ . Linear regression analyses were conducted to assess the linear trend of the reproductive traits across genotypes. The coefficient correlation ( $r$ ) obtained was then compared with the standard grouping according to [13], that is, 0.00-0.10 (negligible), 0.10-0.39 (weak), 0.40-0.59 (moderate), 0.60-0.79 (strong), and 0.80-1.0 (very strong). The coefficient of determination of linear regression ( $r^2$ ) representing the variance proportion (%), accounted for by a genotype for each reproductive trait, was also computed. The genotypic value was determined based on its dominance: GG is the dominant homozygote with a value of 3, heterozygote GA with a value of 2, and a recessive homozygous AA with a value of 1.

#### Results

##### Quantitative traits

Based on the results from this study, the reproductive traits, that is, AFE, BW, FEW, and EP, obtained from 280 ILDs consisting of Tegal (F0) and Magelang (F0) ducks, and the reciprocal crosses, namely, Gallang (F1) and Maggal (F1), were relatively varied. The AFE of base (F0) and offspring generations (F1) differed significantly ( $p < 0.01$ ). FEW and EP traits were also significantly different ( $p < 0.05$ ). The BW of Tegal ducks (F0) differed significantly ( $p < 0.01$ ) from Magelang ducks (F0) and their crosses (F1). Magelang ducks tended to have higher means of reproductive traits compared to Tegal, Gallang, and Maggal ducks (Table-2).

##### DNA amplification in the *PRL* gene region using PCR

A PCR product of 190 bp specific to the primer pair used was obtained after the optimization of the PCR process. The successful amplification was demonstrated by PCR fragments separated by electrophoresis in low melting agarose gel 1% and 1×TBE buffer in the Submarine Electrophoresis device (Hoefer, USA), at 50 V for 15 min (Figure-2).

##### Identification of *PRL* gene polymorphisms in ILD

The 190 bp PCR products of the *PRL* gene of ILDs were aligned with data obtained from GenBank (JQ677091.1), using the ClustalW and BioEdit programs (<https://bioedit.software.informer.com/7.2/>)

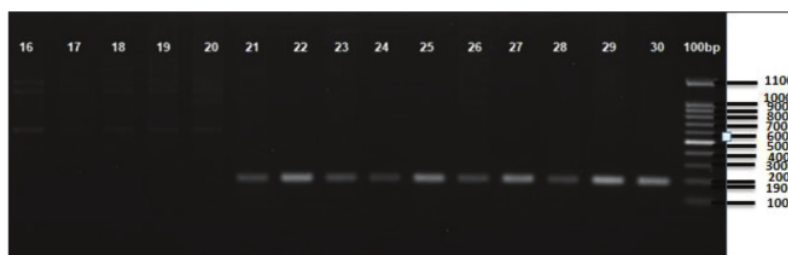
and found mutations at position 164 nt. The sequencing alignment (Figure-3) identified three SNPs, namely, c.164G >G, c.164G >A, and c.164A >A. A

mutation of guanine (G) to adenine (A) indicated the nucleotide variation in the region. Three genotypes were obtained, namely, GG (homozygote) (Figure-4),

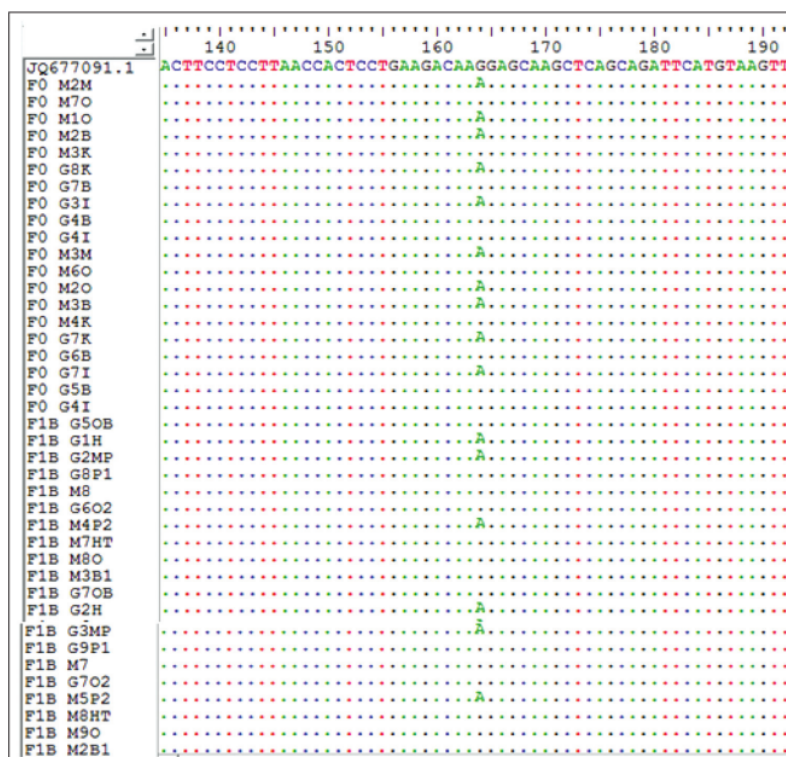
**Table-2:** Mean and standard deviation of reproductive traits for Tegal, Magelang, and its reciprocal crosses (Gallang and Maggal).

ILD <sup>1</sup>	Mean and standard deviation of reproductive traits			
	AFE (d)	BW (g)	FEW (g)	EP (%)
Tegal (F0)	190.59 <sup>a</sup> ±6.28	1220.23 <sup>a</sup> ±106.05	61.46 <sup>a</sup> ±4.41	56.55 <sup>a</sup> ±7.31
Magelang (F0)	187.72 <sup>a</sup> ±3.96	1717.08 <sup>bc</sup> ±151.35	64.83 <sup>a</sup> ±4.57	74.12 <sup>a</sup> ±11.41
Gallang (F1)	146.51 <sup>b</sup> ±11.99	1637.01 <sup>cc</sup> ±113.26	55.94 <sup>ab</sup> ±6.97	68.36 <sup>ab</sup> ±12.95
Maggal (F1)	160.31 <sup>c</sup> ±15.93	1603.57 <sup>cc</sup> ±54.84	56.90 <sup>ab</sup> ±7.61	79.49 <sup>ab</sup> ±11.89

<sup>a,b,c</sup>=Values in each column with different superscripts show significant, ILD=Indonesian local ducks, AFE=Age at first egg, BW=Body weight at first egg, FEW=First egg weight, EP=Egg production



**Figure-2:** Polymerase chain reaction electrophoresis product of Prolactin Gene of Indonesian local ducks (190 bp) with PL-AnasPF L2376 and PL-AnasPR H2565 primer pairs using low melting agarose gel 1%.



**Figure-3:** The results of sequence alignment of prolactin gene at position 164 nt of Indonesian Local Ducks. A=Adenine, T=Thymine, G=Guanine and C=Cytosine.

GA (heterozygote) (Figure-5), and AA (homozygote) (Figure-6).

Figure-4 shows that the SNPs contained in the samples and GenBank data (JQ677091.1) are the same, which means there are no mutations indicating a GG (homozygous) genotype by 1 (one) peak of the

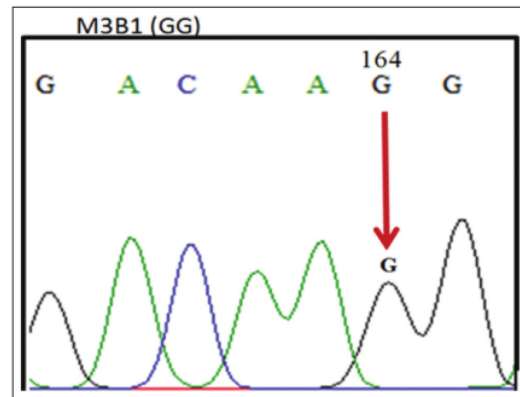


Figure-4: The GG Genotype.

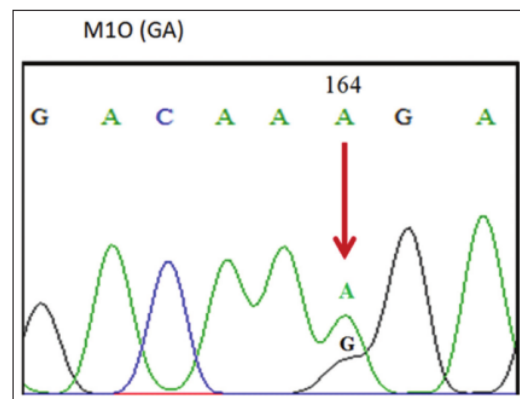


Figure-5: The GA Genotype.

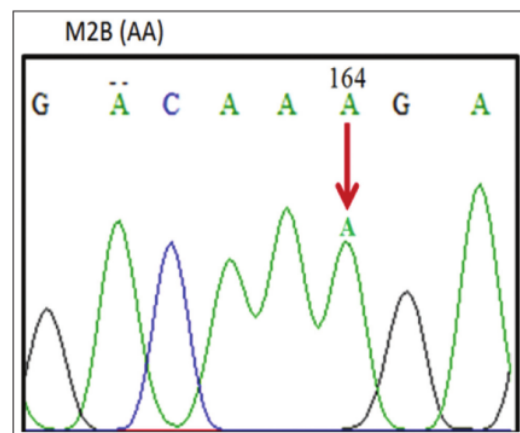


Figure-6: The AA Genotype.

guanine electropherogram (G). Figure-5 shows the occurrence of an imperfect or partial mutation of the guanine base (G) to adenine (A) so that 2 (two) peaks of the G and A electropherograms occur and a GA (heterozygote) genotype is obtained. Figure-6 shows the complete mutation from guanine (G) to adenine (A) so that 1 (one) peak of the electropherogram A appears and an AA (homozygous) genotype is obtained.

#### Chi-square test

Based on the identification of the *PRL* gene polymorphism at the 164 nt locus in ILD, the genotype and allele frequencies can then be determined. Using the genotyping information, Person's Chi-square ( $\chi^2$ ) test was used to test for H-W equilibrium in ILD populations. The results of the Chi-square test are presented in Table-3. The GG, GA, and AA genotypes did not conform to H-W equilibrium in any of the Tegal and Magelang (F0), and Gallang (F1) duck populations. In contrast, the Maggal duck (F1) population was found to be in equilibrium.

#### SNP amino acid changes

Variation in the *PRL* gene fragment was found at SNP c.164G >A, which caused amino acid changes from position 121 nt (JQ677091.1), to 116-117 nt (in Tegal, Magelang, Gallang, and Maggal ducks). Changes in position, weight, number, and percentage of amino acid molecules of the *PRL* gene in Tegal, Magelang (F0), Gallang, and Maggal (F1) ducks are presented in Table-4.

#### *PRL* gene polymorphisms associated with reproduction traits

The results of the association analysis of the *PRL* gene and reproductive traits are presented in Table-5. An association was identified between the genotypes of the *PRL* gene and reproductive traits (BW, FEW, and EP). There was a significant correlation ( $p < 0.05$ ), with a positive correlation coefficient of 0.10, between GG, GA, and AA genotypes with BW traits in Tegal and Magelang duck populations (F0), as well as between the GG and GA genotypes in Gallang duck populations (F1). A significant association ( $p < 0.05$ ) was also observed between the GG, GA, and AA genotypes with the FEW trait in the Gallang duck population (F1), although with a negative correlation coefficient (-0.198). A highly significant association ( $p < 0.01$ ) with a positive correlation coefficient of 0.14 was observed between the GG, GA, and AA genotypes of the *PRL* gene related to the EP trait in Magelang (F0), Gallang (F1), and Maggal (F1) populations. Conversely, there was no significant association ( $p > 0.05$ ) (with a negative correlation coefficient of -0.22) between the GG, GA, and AA genotypes of the *PRL* gene related to the AFE trait in each ILD population.

#### Genotypic effects of the *PRL* gene on reproductive traits

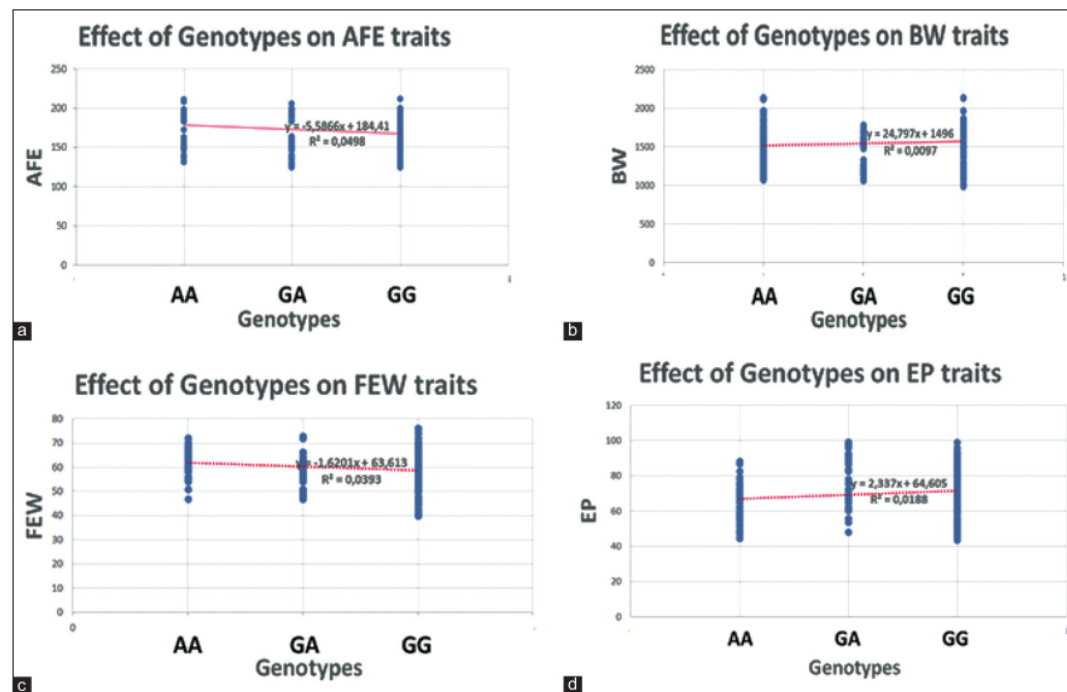
In this study, the genotypic effect of the *PRL* gene on reproductive traits is presented in Figure-7. The effect of this genotype indicates to what extent



**Table-3:** Chi-square test ( $\chi^2$ ) of locus prolactin gene in Indonesian local duck populations.

ILD <sup>1</sup>	Item	Genotypes			Alleles		$\chi^2$ value
		GG	GA	AA	G	A	
Tegal (F0)	Number of population	28	14	28			
	Genotypic frequency	0.40	0.20	0.40	0.50	0.50	25.20
	Expected frequency	0.25	0.50	0.25			
Magelang (F0)	Number of population	42	0	28			
	Genotypic frequency	0.60	0	0.40	0.60	0.40	70
	Expected frequency	0.36	0.48	0.16			
Gallang (F1)	Number of population	42	14	14			
	Genotypic frequency	0.60	0.20	0.20	0.70	0.30	19.21
	Expected frequency	0.49	0.42	0.09			
Maggal (F1)	Number of population	56	14	0			
	Genotypic frequency	0.80	0.20	0	0.90	0.10	-0.99
	Expected frequency	0.81	0.18	0.01			

$\chi^2_{0.01, 2} = 9.21$ , <sup>1</sup>ILD=Indonesian local duck



**Figure-7:** Genotypes effects of prolactin gene on reproductive traits of Indonesian Local Ducks on (a) AGE on first egg, (b) body weight at first egg, (c) first egg weight, and (d) egg production.

the *PRL* gene affects the AFE, BW, FEW, and EP traits. The regression analysis indicated that the *PRL* gene affected 4.98, 0.97, 3.93, and 1.88 % of the variation in AFE (Figure-7a), BW (Figure-7b), and FEW (Figure-7c) and EP (Figure-7d), respectively.

## Discussion

### Quantitative traits

The reproductive trait is an expression of quantitative traits, of which the appearance depends on genetic and environmental factors. In this study, supporting variables such as housing, initial age of study ducks, feeding (Table-1), and rearing management are relatively uniform and homogeneous so that the diversity of

reproductive traits (AFE, BW, FEW, and EP) between Tegal (F0) and Magelang (F0) ducks and their reciprocal crosses, that is, Gallang (F1) and Maggal (F1) (Table-2), can be attributed to the genetic effects of the *PRL* gene (Table-5). The level of plasma *PRL* protein expression is critical in regulating the reproductive ability of poultry, including incubation and EP. In poultry, changes in plasma *PRL* levels are related to the expression of *PRL* mRNA in the anterior pituitary [14].

### Polymorphism and SNP genotyping of the *PRL* gene in ILD

As demonstrated in Figures-4-6, these base changes are one type of transition mutation. Changes

**Table-4:** Changes in position, weight, number, and percentage of amino acid molecules of prolactin gene in Tegal, Magelang (F0), Gallang, and Maggal (F1) ducks.

Amino acid	JQ677091.1 <sup>1</sup>	Tegal (F0)			Magelang (F0)			Gallang (F1)			Maggal (F1)		
		GG <sup>2</sup>	GA <sup>2</sup>	AA <sup>2</sup>	GG <sup>2</sup>	GA <sup>2</sup>	AA <sup>2</sup>	GG <sup>2</sup>	GA <sup>2</sup>	AA <sup>2</sup>	GG <sup>2</sup>	GA <sup>2</sup>	AA <sup>2</sup>
Position	121	116	116	116	116	116	116	116	116	117	116	116	116
MW <sup>3</sup>	9867.47	9526.14	9540.16	9540.16	9540.16	9540.16	9540.16	9572.23	9540.16	9597.21	9526.14	9540.16	9540.16
Ala	37	30.58	33	29.31	33	28.45	34	29.31	33	28.45	33	28.45	34
Cys	24	19.83	24	20.69	24	20.69	24	20.69	24	20.51	24	20.69	24
Asp	0	0.00	0	0.00	0	0.00	0	0.00	0	0.00	0	0.00	0
Glu	0	0.00	0	0.00	0	0.00	0	0.00	0	0.00	0	0.00	0
Phe	0	0.00	0	0.00	0	0.00	0	0.00	0	0.00	0	0.00	0
Gly	30	24.79	29	25.00	28	24.14	29	25.00	28	24.14	29	25.00	28
His	0	0.00	0	0.00	0	0.00	0	0.00	0	0.00	0	0.00	0
Ile	0	0.00	0	0.00	0	0.00	0	0.00	0	0.00	0	0.00	0
Lys	0	0.00	0	0.00	0	0.00	0	0.00	0	0.00	0	0.00	0
Leu	0	0.00	0	0.00	0	0.00	0	0.00	0	0.00	0	0.00	0
Met	0	0.00	0	0.00	0	0.00	0	0.00	0	0.00	0	0.00	0
Asn	0	0.00	0	0.00	0	0.00	0	0.00	0	0.00	0	0.00	0
Pro	0	0.00	0	0.00	0	0.00	0	0.00	0	0.00	0	0.00	0
Gln	0	0.00	0	0.00	0	0.00	0	0.00	0	0.00	0	0.00	0
Arg	0	0.00	0	0.00	0	0.00	0	0.00	0	0.00	0	0.00	0
Ser	0	0.00	0	0.00	0	0.00	0	0.00	0	0.00	0	0.00	0
Thr	30	24.79	30	25.86	30	25.86	30	25.86	30	25.64	30	25.86	30
Val	0	0.00	0	0.00	0	0.00	0	0.00	0	0.00	0	0.00	0
Irp	0	0.00	0	0.00	0	0.00	0	0.00	0	0.00	0	0.00	0
Tyr	0	0.00	0	0.00	0	0.00	0	0.00	0	0.00	0	0.00	0

<sup>1</sup>From Gene Bank, <sup>2</sup>Genotype, <sup>3</sup>MW = Molecular Weight (Dalton), <sup>4</sup>n = Number



**Table-5:** Association of genotypes of prolactin gene with reproduction traits and their correlation coefficients on Tegal (F0), Magelang (F0), Gallang (F1), and Maggal (F1).

ILD <sup>1</sup>	Genotypes (G <sub>n</sub> ) <sup>2</sup>	N <sup>3</sup>	Reproductive traits (mean and standard deviation)			
			AFE (d)	BW (g)	FEW(g)	EP (%)
Tegal (F0)	GG	28	188.93±4.54	1192.89±101.93	62.54±4.73	55.99±7.43
	GA	14	191.43±6.61	1187.14 <sup>a,c</sup> ±72.33	60.29±3.81	61.83 <sup>ab</sup> ±6.32
	AA	28	191.82±7.38	1264.12 <sup>b,c</sup> ±11.77	60.96±4.27	52.67 <sup>ac</sup> ±5.04
Magelang (F0)	GG	42	187.33±3.23	1688.5 <sup>a</sup> ±151.79	64.21±4.89	80.79 <sup>a</sup> ±7.57
	AA	28	188.32±4.85	1745.67 <sup>b</sup> ±147.15	65.25±4.07	64.10 <sup>b</sup> ±8.52
Gallang (F1)	GG	42	148.31±9.12	1698.24 <sup>a</sup> ±62.20	54.26±6.35	62.42 <sup>a</sup> ±9.98
	GA	14	139.36±9.12	1620.57 <sup>b</sup> ±85.45	55.43 <sup>a</sup> ±7.37	85.74 <sup>b</sup> ±8.15
	AA	14	148.29±11.79	1469.79 <sup>c</sup> ±77.89	61.5 <sup>b</sup> ±5.8	72.23 <sup>c</sup> ±8.76
Maggal (F1)	GG	56	160.38±16.73	1602.25±59.29	55.88 <sup>a</sup> ±7.48	75.49 <sup>a</sup> ±9.69
	GA	14	160.07±12.78	1608.86±32.39	61.67 <sup>b</sup> ±6.58	95.52 <sup>b</sup> ±2.89
r <sub>GT</sub>	-	-	-0.22	0.10	-0.198	0.14
r <sup>2</sup> <sub>GT</sub> (%)	-	-	4.98	0.97	3.93	1.88

<sup>1</sup>ILD=Indonesian Local Ducks, <sup>2</sup>G<sub>n</sub>=Genotypes, <sup>3</sup>N=Number of population. AFE=Age at First Egg; BW=Body Weigh at first egg; FEW=First Egg Weight; EP=Egg Production. <sup>a,b,c</sup>=Values with different superscripts at the same column of the same ILD shows significant, r<sub>GT</sub>=Correlation coefficient of Genotype (G<sub>n</sub>) dan Traits (T), r<sup>2</sup><sub>GT</sub> (%)=Coefficients of determination of Genotype (G<sub>n</sub>) dan Traits (T) (Figure-7c) and EP (Figure-7d), respectively

in one purine base (G) to another purine base (A), or a change in one pyrimidine base (C) to another pyrimidine base (T) are called a transition mutation [15]. A study on Chinese ducks detected various polymorphisms (A-412G) in intron 1 of the *PRL* gene, with three genotypes, that is, AA, AG, and GG [16]. Two mutations occur in the non-coding area of intron 4 in g.3941T >G, and g.3975C >A. The analysis results indicated that each SNP is associated with reproductive traits in at least one duck [17]. The *PRL* gene sequence in adult ducks is similar to the amino acid sequences of *PRL* in chicken (93.4%), turkey (91.3%), and quail (91.3%) [18]. *PRL* gene polymorphisms relating to production traits have also been reported in chickens [18-21] and geese [22]. The fact that three SNPs produce three genotypes in the experimental population shows an association of polymorphic SNP heredity. Two *PRL* gene SNPs exist, namely, C-2161G and C-2402T in Fars native chickens of Iran [23].

#### Population equilibrium

The Chi-square calculated value (Table-3) was greater than the Chi-square table with the corresponding degree of freedom. This suggests that the *PRL* gene distribution in Tegal (F0), Magelang (F0), and Gallang (F1) duck populations is not in H-W equilibrium. However, Maggal ducks exhibited H-W equilibrium for the *PRL* gene. The different H-W equilibrium states in this study population provide support that the frequency of alleles and genotypes in the duck population is relatively diverse. This further indicates that the population underwent selection, mutation, migration, or non-random mating within the population [4,24,25]. Thus, if a controlled selection is applied to the population it will provide a realistic selection response. H-W equilibrium in the population is attained if the frequency of alleles and genotypes remains constant from one generation to the next, as long as there is no selection, mutation, or migration and that random mating occurs [26,27].

#### SNP amino acid changes

Table-4 demonstrates that the changes in amino acid position caused changes in the molecular weight, number, and percentage of amino acid molecules of the *PRL* gene in Tegal (F0), Magelang (F0), Gallang, and Maggal (F1) ducks. Changes occurred in the alanine, cysteine, glycine, and threonine amino acids. Amino acids containing the SNP c.376A >G and c.409G >A from the Melanocortin 1 Receptor (*MC1R*) gene in Magelang ducks were altered. The mutation changed amino acid isoleucine to valine and valine/isoleucine (c.376A>G) and alanine to threonine and threonine/alanine (c.409A>G) [28]. Amino acid changes of the SNP c.700T >C and c.701G >A from the FSH gene at 234 nt were as follows: Tryptophan (Trp/W) to glutamine (Gln/Q) with changes in UGA amino acids to CAA (homozygotes), and Trp/W to arginine (Arg/R) with the change of UGA amino acids to CGA (heterozygotes) [29].

#### *PRL* gene associations with reproductive traits

As demonstrated in Table-5, there was no association ( $p>0.05$ ) between the GG, GA, and AA genotypes of the *PRL* gene with the AFE trait in any ILD population. However, there was a significant association ( $p<0.05$ ) with BW and FEW traits. The association with the EP trait was highly significant ( $p<0.01$ ). The highest EP in Tegal (F0), Gallang (F1), and Maggal (F1) ducks was obtained with the heterozygote genotype (GA), whereas the highest EP in Magelang duck (F0) was obtained with the dominant homozygote genotype (GG). Thus, it can be stated that the G gene is dominant for high EP and is associated with the relatively varied Quantitative Trait Locus in ILDs. This suggests that G gene population enrichment using molecular selection is useful for increasing the EP of ILD. Chinese local ducks carrying the GG genotype exhibited significantly higher EP and egg weights than those with the AG and AA genotypes ( $p<0.05$ ) [16].

The genotypic value of the *PRL* gene positively correlates with the BW and EP traits, but has a negative relationship with the AFE and FEW traits (Figure-7). Correlation coefficients of 0.00-0.10 are considered a negligible correlation criterion, whereas correlation coefficients of 0.10-0.39 are weak correlations. The value of the correlation coefficient was small (non-significant), though it does not mean that the two variables are not associated. The two variables might have a strong relationship, but the correlation coefficient could be close to zero [11]. The relationship between two variables depends on the species, pairing traits, and the magnitude of the correlation coefficient [30]. Positive associations between the BW and EP traits, and geno [36], indicate an increase in BW and EP traits for each increase in the number of dominant alleles [36], while a negative relationship indicates that an increase in the number of dominant alleles (G) is not followed by an increase in AFE and FEW traits. AFEs is an important trait that indicates sexual maturation and EP performance, which was negatively correlated with number of eggs laid [31,32].

#### Genotypic effects of the *PRL* gene on reproductive traits

The effect of the *PRL* gene on reproductive traits is presented in Figure-7. The effect of the *PRL* gene genotype on AFE was 4.98 % (Figure-7a); BW 0.97 % (Figure-7b); FEW 3.93 % (Figure-7c); and EP 1.88 % (Figure-7d). This relatively small effect shows that many other factors influence AFE, BW, FEW, and EP traits. The influencing factors could be both exogenous (environmental) and endogenous (genetic) factors. The production and reproduction traits are controlled by polygenes [32]. Some genetic factors affected reproduction and production traits, besides the *PRL* gene. The FSH gene is reported to affect reproduction and production traits in ILDs [29]. In addition, reproduction and production traits in ducks are also affected by the type or species of livestock [30]. Some studies in Chinese local duck (Shaoxing) have reported that the melatonin receptor genes affect the age of first egg [33].

The correlation coefficient obtained can be used as the basis for a selection program. Genetic polymorphisms that have an effect on body weight or the production trait that plays a role in other economic improvements can be used as a selection tool [34]. Although the obtained correlation coefficient between the *PRL* gene and EP trait between the GG, GA, and AA genotypes in Tegal (F0), Magelang (F0), Gallang (F1), and Maggal (F1) du [71] populations was relatively small (0.14), it still had a significant positive ( $p < 0.01$ ) effect (Table-4). In a pig population being studied, the [13] notype frequency of the *PRL* receptor (*PRLR*) genotypes AA, AB, and BB was 0.247, 0.386, and 0.367, respectively. Pigs that carry the AA genotype had significantly higher numbers of piglets ( $p \leq 0.01$ ) than those who had the AB or BB genotypes [35]. EP in poultry, among others, is influenced by t[72] breed, body weight, and early egg laying age [10]. A

significant difference ( $p > 0.05$ ) was found between genotypes (AA, AB, and BB) and the EP trait related to the *PRL* gene in Wan-xi White (China) and Rhine (European) goose breeds. Geese with the AA genotype laid more eggs than the AB or BB genotypes [22]. There was a significant relationship ( $p < 0.01$ ) between polymorphic nucleotides at position C1715301T in VIPR1 (VIPR1/TaqI) with the number of eggs laid ( $p < 0.05$ ) in Lien Minh chickens [20]. The genes that had a significant effect on EP among others, are the *PRL* gene and the *PRLR* gene [6,36].

The action of *PRL* is biologically mediated by the *PRLR*, which has structural similarities with the *PRL* Growth Hormone Receptor and belongs to the Class I cytokine receptor superfamily. A sharp increase of plasma *PRL* levels can cause a decrease in EP [37]. In some species, the anti-gonadal effects of *PRL* can cause inhibition of follicle formation and inhibited egg laying. Potential anti-gonadal effects of *PRL* through inhibition of Gonadotropin-releasing hormone I and II and Luteinizing Hormone have been demonstrated in *in vitro* testing in poultry [38,39] and is supported by evidence of the anti-gonadal effects of *PRL* in *in vivo* testing of several species [37]. However, the anti-gonadal effects of *PRL* have not been found in other species [40,41]. The production and reproduction traits with estimated heritability of low to moderate from 0.13 to 0.20 [42,43] make conventional breeding methods ineffective. Therefore, molecular-aided selection is a powerful tool for improving the egg-production related traits and increasing economic benefits.

The *PRL* gene is polymorphic and is an important marker, and can be used to increase the economic characteristics of local ducks [44]. Genetic variations in the *PRL* genes of domestic poultry can be used as genetic markers for further selection. Sequences of the *PRL* gene in various bird species can provide useful information to uncover the physiological and general functions as well as species-specific mechanisms for gene expression. The use of genetic markers has the potential to increase selection intensity and is supported to be most effective way of selection [45].

#### Conclusion

Based on the results of this study, it can be concluded that SNP genotypes of the *PRL* gene are polymorphic and associate with positive genetic effects in reproductive traits, especially EP in ILDs. The GA genotype obtained (SNP c.164G > A) can be used as a marker-assisted selection candidate for the high EP trait.

#### Authors' Contributions

DP compiled the research ideas, designed the main framework, and composed the manuscript. RSSS, SAS, AS, and DPC contributed in coordinating field data collections. SAS conducted the statistical analysis. AS compiled and revised the manuscript. II read, criticized, and revised the text according to its scientific content. All authors have read and agreed to the final draft.



## Acknowledgments

The authors thank the Directorate General of Higher Education, Ministry of Education and Culture of the Republic of Indonesia, through the Institute of Research and Community Service (LPPM) of the University of Jember for providing the Unsoed Leading Research Funds (Applied) by research contract number P/286/UN23/14/PN/2019 for the 2019/2020 fiscal year.

## Competing Interests

The authors declare that they have no competing interests.

## Publisher's Note

Veterinary World remains neutral with regard to jurisdictional claims in published institutional affiliation.

## References

- Ditjennak. (2018) Data Statistik Peternakan dan Kesehatan Hewan 2018. Direktorat Jenderal Peternakan dan Kesehatan Hewan, Jakarta.
- Purwantini, D., Santosa, S.A. and Ismoyowati. (2018) Potensi Genetik Terkait dengan Karakteristik Produksi Pada Itik Lokal di Indonesia. Prosiding Seminar Teknologi dan Agribisnis Peternakan VI: Pengembangan Sumber Daya Genetik Ternak Lokal Menuju Swasembada Pangan Hewani ASUH, Fakultas Peternakan Universitas Jenderal Soedirman. p64-73.
- Purwantini, D., Santosa, S.A. and Ismoyowati. (2015) Pendugaan Nilai Heritabilitas Karakteristik Bobot dan Produksi Telur Itik Tegal. Prosiding Teknologi dan Agribisnis Peternakan untuk Akselerasi Pemenuhan Pangan Hewani (Seri III). p635-639.
- Purwantini, D., Santosa, S.A. and Ismoyowati. (2016) Estimation of selection accuracy and responses of the production characteristics using different selection intensity in Magelang duck. *J. Indones. Trop. Anim. Agric.* 41(2): 1-9.
- Jiang, R.S., Chen, X., Wei, R. and Geng, Z. (2011) Expression of plasma prolactin and pituitary prolactin mRNA around the broody cycle in Wan-xi White goose. *Turk. J. Vet. Anim. Sci.*, 35(6): 431-434.
- Ng, C., Liang, Z., Yu, W., Feng, Y., Peng, X., Gong, Y. and Li, S. (2011) Polymorphism of the prolactin gene and its association with egg production traits in native Chinese geese. *S. Afr. J. Anim. Sci.*, 41(1): 63-69.
- Horseman, N.D. and Gregerson, K.A. (2014) Prolactin actions. *J. Mol. Endocrinol.*, 52(1): R95-R106.
- Jiang, R.S., Xu, G.Y., Zhang, X.Q. and Yang, N. (2005) Association of polymorphisms for prolactin and prolactin receptor genes with broody traits in chickens. *Poult. Sci.*, 84(6): 839-845.
- Liang, Y., Cui, J., Yang, G., Leung, F.C. and Zhang, X. (2006) Polymorphisms of 5'-flanking region of chicken prolactin gene. *Domest. Anim. Endocrinol.*, 30(1): 1-16.
- Cui, J.X., Du, J.L., Liang, Y., Deng, X.M., Li, N. and Zhang, X.Q. (2006) Association of polymorphisms in the promoter region of chicken prolactin with egg production. *Poult. Sci.*, 85(1): 26-31.
- Pichner, F. (1981) Population Genetics in Animal Breeding. 60 man and Co., San Francisco.
- Steel, R.G.D. and Torrie, J.H. (1998) Principle Procedures of Statistics Indeks. Terjemahan Bambang Sumantri. Prinsip dan Prosedur Statistik: Suatu Pendekatan Biometrik. PT media Pustaka Utama, Jakarta.
- Schober, P., Boer, C. and Schwarte, L.A. (2018) Correlation coefficients: Appropriate use and interpretation. *Anesth. Analg.*, 126(5): 1763-1768.
- Wong, E.A., Ferrin, N.H. and Silsby, J.L. (1991) Cloning of a turkey prolactin cDNA: Expression of prolactin mRNA throughout the reproductive cycle of the domestic turkey (*Meleagris gallopavo*). *Gen. Comp. Endocrinol.*, 83(1): 18-26.
- Harahap, A.S., Sumantri, C., Ulupi, N., dan Darwati S. and Sartika, T. (2017) Identification of polymorphism calpastatin gene in local chicken. *J. Vet.*, 18(2): 192-200.
- Bai, D.P., Hu, Y.Q., Li, Y.B., Huang, Z.B. and Li, A. (2019) Polymorphisms of the prolactin gene and their association with egg production traits in two Chinese domestic ducks. *Poult. Sci.*, 60(2): 125-129.
- Chang, M.T., Cheng, Y.S. and Huang, M.C. (2012) Association of prolactin haplotypes with reproductive traits in ducks. *Anim. Reprod. Sci.*, 135(1-4): 91-96.
- Kansaku, N., Ohkubo, T., Okabayashi, H., Guémené, D., Klein, U., Zadworny, D. and Shimada, K. (2005) Cloning of duck PRL cDNA and genomic DNA. *Gen. Comp. Endocrinol.*, 141(1): 39-47.
- Rashidi, H., Mianji, G.R., Farhadi, A. and Gholizadeh, M. (2012) Association of prolactin and prolactin receptor gene polymorphisms with economic traits in breeder hens of indigenous chickens of Mazandaran province. *Iran. J. Biotechnol.*, 10(2): 129-135.
- Osman, M.M., Hemeda, S.A., Hassanin, A.A. and Hussein, W.A. (2017) Polymorphism of prolactin gene and its association with egg production trait in four commercial chicken lines. *J. Hell. Vet. Med. Soc.*, 68(3): 391-404.
- Nguyen, T.T.B., Nguyen, H.D., Vu, C.Q., Yen Hoar, T., Ta, T.L., Dinh, T.N.T., Vu, T.T. and Nguyen, T.D.T. (2018) Effect of nucleotide polymorphism of candidate genes on egg production traits in native Lien Minh chicken. *Livest. Res. Rural Dev.*, 30(6).
- Jiang, R.S., Zhang, L.L., Geng, Z.Y., Yang T. and Zhang, S.S. (2009) Single nucleotide polymorphisms in the 5'-flanking region of the prolactin gene and the association with reproduction traits in geese. *S. Afr. J. Anim. Sci.*, 39(1): 83-87.
- Sarvestani, B.A.S., Niazi, A., Zamiri, M.J. and Dadpasand, T.M. (2013) Polymorphisms of prolactin gene in a native chicken population and its association with egg production. *Iran. J. Vet. Res.*, 14(2): 113-119.
- Purwantini, D., Santosa, S.A. and Ismoyowati. (2017) Perbaikan Mutu Genetik Melalui Seleksi Induk Hasil Persilangan Itik Tegal dengan Magelang Prosiding Seminar Teknologi dan Agribisnis Peternakan V: Teknologi dan Agribisnis Peternakan untuk Mendukung Ketahanan Pangan, Fakultas Peternakan Universitas Jenderal Soedirman. p289-295.
- Ismoyowati, S.A.S. (2014) Keragaman Genetik Itik Lokal Indonesia. Universitas Jenderal Soedirman, Purwokerto.
- Warwick, E.J., Astuti, M. and Hardjosubroto, W. (1990) Cattle Pemuliaan Ternak. Gadjah Mada University Press, Yogyakarta.
- Hardjosubroto, W. (1999) Genetika Hewan. Gadjah Mada University Press, Yogyakarta.
- Rahayu, A., Purwantini, D., Maharani, D. and Hartatik, T. (2015) Single nucleotide polymorphisms identification and genotyping analysis of melanocortin 1 receptor gene in various plumage colours Magelang ducks. *Int. J. Poult. Sci.*, 14(4): 207-212.
- Purwantini, D., Santosa, S.A. and Ismoyowati. (2017) Single nucleotide polymorphism genotypes of the follicle-stimulating hormone gene associated with egg production from Tegal and Magelang ducks with their resulting reciprocal crosses. *Int. J. Poult. Sci.*, 16(11): 434-442.
- Toebe, M., Machado, L.N., de Tartaglia, F.L., de Valho, J.O., Bandeira, C.T. and Filho, A.C. (2019) Sample size for the estimation of Pearson's linear correlation in *Crotalaria* species. *Pesq. Agropec. Bras.*, 54: 01027.



31. Nik, S., Nejati-Javaremi, A., Mehrabani-Yeganeh, H., Fatemi, S.A. (2012) Estimation of genetic parameters body weight and egg production traits in Mazandaran ve chicken. *Trop. Anim. Health Prod.*, 44(7): 1437-1443.
32. Zaga, Z.S., Nassar, M.K. and Brockmann, G.A. (2012) Quantitative trait loci segregating in crosses between New Hampshire and white leghorn chicken lines: I. egg production traits. *Anim. Genet.*, 43(2): 183-189.
33. Feng, P., Zhao, W., Xie, Q., Zeng, T., Lu, L. and Yang, L. (2018) Polymorphisms of melatonin receptor genes and their associations with egg production traits in Shaoxing duck. *Asian J. Anim. Sci.*, 31(10): 1535-1541.
34. Jakaria, J., Duryadi, D., Noor, R.R., dan Tappa, B. and Martojo, H. (2007) hubungan polimorfisme gen hormon pertumbuhan msp1 dengan bobot badan dan Ukuran Tubuh Sapi Pesisir Sumatera Barat. [The relationship of Msp1 growth hormone gene polymorphism and body weight and body Measurements of West Sumatera Pesisir Cattle]. *J. Indones. Trop. Anim. Agric.*, 32(1): 33-40.
35. Jec, M., Dybus, A. and Terman, A. (2001) Prolactin receptor gene polymorphism and its association with litter in Polish Landrace. *Arch. Anim. Breed.*, 44(5): 547-552.
36. Gady, G.J., David, C.G. and Raju, S.S. (2006) Chemical control of prolactin secretion and its effects on pause days production and steroid hormone concentration in Girirani birds. *Int. J. Poult. Sci.*, 5(7): 685-692.
37. Gady, I.J., David, C.G., Samra, P.V. and Singh, K. (2002) Possible role of prolactin in laying performance and steroid hormone secretion in domestic hen (*Gallus domesticus*). *Gen. Comp. Endocrinol.*, 127(3): 249-255.
38. S., Foster, L.K., Silsby, J.L., Halawani, M.E.E. and Foster, D.N. (1995) Sequence analysis of the turkey LH subunit and its regulation by gonadotrophin-releasing hormone and prolactin in cultured pituitary cells. *J. Mol. Endocrinol.*, 14(1): 117-129.
39. Hiyama, G., Kansaku, N., Tanaka, T., Wakui, S. and Zadworny, D. (2014) Characterization of chicken prolactin regulatory element binding protein and its expression in the anterior pituitary gland during embryogenesis and different reproductive stages. *J. Poult. Sci.*, 52(1): 0036.
40. Ler, A.H. and Dusseau, J.W. (1968) Prolactin and the photoperiodic gonadal response in several avian species. *Physiol. Zool.*, 41(1): 95-103.
41. Lin, J.D., Advis, J.P., Ottinger, M.A., Lea, R.W. and App, P.J. (1999) An analysis of physiological mechanisms underlying the antigonadotropic action of intracranial prolactin in ring doves. *Gen. Comp. Endocrinol.*, 114(1): 97-107.
42. Zey, J.P. (2004) Heritabilities and genetic correlations of laying performance in Muscovy ducks selected in Taiwan. *Poult. Sci.*, 45(2): 180-185.
43. Lin, R., Chen, H.P., Rouvier, R. and Marie-Etancelin, C. (2016) Genetic parameters of body weight, egg production, and shell quality traits in the Shan Ma laying duck (*Anas platyrhynchos*). *Poult. Sci.*, 95(11): 2514-2519.
44. Kansaku, N., Hiyama, G., Sasanami, T. and Zadworny, D. (2008) Prolactin and growth hormone in birds: Protein structure, gene structure and genetic variation. *J. Poult. Sci.*, 47(1): 1-6.
45. Ilkanowska, A., Mazurowski, A., Mroczkowski, S. and Koszyński, D. (2014) Prolactin (PRL) and prolactin receptor (PRLR) genes and their role in poultry production traits. *Folia. Biol. (Krakow)*, 62(1): 1-8.

\*\*\*\*\*

ORIGINALITY REPORT

---

15%

SIMILARITY INDEX

9%

INTERNET SOURCES

10%

PUBLICATIONS

3%

STUDENT PAPERS

---

PRIMARY SOURCES

---

1

Submitted to Universidade de Sao Paulo

Student Paper

<1 %

---

2

Allison H. Alvarado, Christen M. Bossu, Ryan J. Harrigan, Rachael A. Bay et al. "Genotype - environment associations across spatial scales reveal the importance of putative adaptive genetic variation in divergence", Evolutionary Applications, 2022

Publication

<1 %

---

3

[www.thefreelibrary.com](http://www.thefreelibrary.com)

Internet Source

<1 %

---

4

[www.myfoodresearch.com](http://www.myfoodresearch.com)

Internet Source

<1 %

---

5

Wilder Hernando Ortiz Vega, Celia Raquel Quirino, Aylton Bartholazzi-Junior, Miguel Alejandro Silva Rua et al. "Variants in the CYP19A1 gene can affect in vitro embryo production traits in cattle", Journal of Assisted Reproduction and Genetics, 2018

Publication

<1 %

---

6	<a href="http://research.shirazu.ac.ir">research.shirazu.ac.ir</a> Internet Source	<1 %
7	<a href="http://www.jbc.org">www.jbc.org</a> Internet Source	<1 %
8	<a href="http://allie.dbcls.jp">allie.dbcls.jp</a> Internet Source	<1 %
9	<a href="http://www.personal.psu.edu">www.personal.psu.edu</a> Internet Source	<1 %
10	Xing-ting Liu, Xin Lin, Yu-ling Mi, Wei-dong Zeng, Cai-qiao Zhang. "不同产蛋阶段蛋鸡卵黄前体物质生成的变化研究", Journal of Zhejiang University-SCIENCE B, 2018 Publication	<1 %
11	<a href="http://search.scielo.org">search.scielo.org</a> Internet Source	<1 %
12	<a href="http://smujo.id">smujo.id</a> Internet Source	<1 %
13	<a href="http://www.fbn-dummerstorf.de">www.fbn-dummerstorf.de</a> Internet Source	<1 %
14	<a href="http://roavs.com">roavs.com</a> Internet Source	<1 %
15	<a href="http://www.europeanjournalofmidwifery.eu">www.europeanjournalofmidwifery.eu</a> Internet Source	<1 %
16	<a href="http://www.nrcresearchpress.com">www.nrcresearchpress.com</a> Internet Source	<1 %



17	Fang Chen, Jinjun Li, Hao Zhang, Jing Xu, Zhengrong Tao, Junda Shen, Jianliang Shen, Lizhi Lu, ChunMei Li. "Identification of differentially expressed known and novel miRNAs in broodiness of goose", Molecular Biology Reports, 2014 Publication	<1 %
18	Submitted to London School of Business and Finance Student Paper	<1 %
19	Submitted to Thammasat University Student Paper	<1 %
20	Submitted to University of Adelaide Student Paper	<1 %
21	R. L. Hakim, L. D. Mahfudz, R. Muryani. "Penambahan Nukleotida pada Ransum Broiler yang Dipelihara pada Suhu Lingkungan Berbeda terhadap Performa Organ Imunitas", Jurnal Sain Peternakan Indonesia, 2021 Publication	<1 %
22	diva-portal.org Internet Source	<1 %
23	vast.ac.vn Internet Source	<1 %
24	www.scirp.org Internet Source	<1 %

25	<a href="http://www.teses.usp.br">www.teses.usp.br</a> Internet Source	<1 %
26	<a href="http://polbangtanmanokwari.ac.id">polbangtanmanokwari.ac.id</a> Internet Source	<1 %
27	<a href="http://www.aessweb.com">www.aessweb.com</a> Internet Source	<1 %
28	"Pathology of Genetically Engineered and Other Mutant Mice", Wiley, 2021 Publication	<1 %
29	<a href="http://www.hnjournal.net">www.hnjournal.net</a> Internet Source	<1 %
30	<a href="http://www.sciencegate.app">www.sciencegate.app</a> Internet Source	<1 %
31	Thierry, Anne-Mathilde, Sophie Brajon, Sylvie Massemin, Yves Handrich, Olivier Chastel, and Thierry Raclot. "Decreased prolactin levels reduce parental commitment, egg temperatures, and breeding success of incubating male Adélie penguins", Hormones and Behavior, 2013. Publication	<1 %
32	Tom V. L. Berghof, Marleen H. P. W. Visker, Joop A. J. Arts, Henk K. Parmentier et al. "Genomic Region Containing Toll-Like Receptor Genes Has a Major Impact on Total IgM Antibodies Including KLH-Binding IgM	<1 %

# Natural Antibodies in Chickens", Frontiers in Immunology, 2018

Publication

33

A R Hariansyah, A Raharjo, A Zainuri, Y Parwoto, D Prasetyo, S Prastowo, N Widyas. "Genetic parameters on Bali cattle progeny test population", IOP Conference Series: Earth and Environmental Science, 2018

Publication

<1 %

34

Christoph Mans, W. Michael Taylor. "Update on Neuroendocrine Regulation and Medical Intervention of Reproduction in Birds", Veterinary Clinics of North America: Exotic Animal Practice, 2008

Publication

<1 %

35

[info.ibaraki.ac.jp](http://info.ibaraki.ac.jp)

Internet Source

<1 %

36

Gennadiy Vladimirovich Zhizhin. "chapter 4 Higher Dimensions in the Theory of Heredity", IGI Global, 2021

Publication

<1 %

37

Liu, Z.. "Molecular cloning and characterisation of the Magang goose prolactin gene", General and Comparative Endocrinology, 20080101

Publication

<1 %



- |       |  |      |
|-------|--|------|
| 38    | M. J. H. Goldsworthy. "Gene expression of <i>Pseudomonas aeruginosa</i> and MRSA within a catheter-associated urinary tract infection biofilm model", Bioscience Horizons, 03/01/2008<br><small>Publication</small>  | <1 % |
| <hr/> |  |      |
| 39    | Maisa Vitória Gayoso, Flávia Seullner Domingues, Marcondes Cavalcante França Junior, Stephanie H. Felgoise et al. "Cross-cultural adaptation and validation for the Brazilian population of the instrument Amyotrophic Lateral Sclerosis-Specific Quality of Life-Short Form (ALSSQOL-SF)", Quality of Life Research, 2019<br><small>Publication</small> | <1 % |
| <hr/> |  |      |
| 40    | O. Ozmen, I. Seker, O. Ertugrul, E. Ozkan, N. Tekin. "Prolactin receptor (<i>PRLR</i>) gene polymorphism in Chios, White Karaman and Awassi sheep breeds", Archives Animal Breeding, 2011<br><small>Publication</small>  | <1 % |
| <hr/> |  |      |
| 41    | Submitted to University of North Texas Health Science Center<br><small>Student Paper</small>   | <1 % |
| <hr/> |  |      |
| 42    | <a href="http://ajpregu.physiology.org">ajpregu.physiology.org</a><br><small>Internet Source</small>   | <1 % |
| <hr/> |  |      |
| 43    | <a href="http://archive.aessweb.com">archive.aessweb.com</a><br><small>Internet Source</small>   |      |

<1 %

44

Martin H. C. Liu, R. Richard Churchil. "Chapter 3 Duck Genetics and Breeding", Springer Science and Business Media LLC, 2022

Publication

<1 %

45

[journals.sagepub.com](https://journals.sagepub.com)

Internet Source

<1 %

46

[jurnal.utb.ac.id](https://jurnal.utb.ac.id)

Internet Source

<1 %

47

[repository.unair.ac.id](https://repository.unair.ac.id)

Internet Source

<1 %

48

Submitted to Bangkok Patana School

Student Paper

<1 %

49

[media.neliti.com](https://media.neliti.com)

Internet Source

<1 %

50

[openprairie.sdstate.edu](https://openprairie.sdstate.edu)

Internet Source

<1 %

51

Burke, W.H.. "Prolactin and luteinizing hormone levels in female turkeys (*Meleagris gallopavo*) during a photoinduced reproductive cycle and broodiness", General and Comparative Endocrinology, 198005

Publication

<1 %

52	R Susanti, A Yuniastuti, R S Iswari. "Genetic evaluation of Central Javanese local duck based on the ovalbumin gene", Journal of Physics: Conference Series, 2019 Publication	<1 %
53	<a href="https://downloads.hindawi.com">downloads.hindawi.com</a> Internet Source	<1 %
54	<a href="https://publisher.uthm.edu.my">publisher.uthm.edu.my</a> Internet Source	<1 %
55	<a href="https://unhas.ac.id">unhas.ac.id</a> Internet Source	<1 %
56	<a href="https://www.life-science-alliance.org">www.life-science-alliance.org</a> Internet Source	<1 %
57	"Detection of polymorphisms of growth differentiation factor 9 (GDF9) gene in Indonesian goats", Journal of Animal Breeding and Genomics, 2019 Publication	<1 %
58	Guilherme Rodrigues Fernandes Campos, Joseph Ward, Shucheng Chen, Cintia Bittar et al. "A novel substitution in NS5A enhances the resistance of hepatitis C virus genotype 3 to daclatasvir", Journal of General Virology, 2021 Publication	<1 %
59	P. Zamani, M. Jasouri, M.R. Moradi. "Comparison of different models for genetic	<1 %



# evaluation of egg weight in Mazandaran fowl", British Poultry Science, 2016

Publication

60

[getjson.sid.ir](http://getjson.sid.ir)

Internet Source

<1 %

61

[ojs.alpa.uy](http://ojs.alpa.uy)

Internet Source

<1 %

62

[www.jafs.com.pl](http://www.jafs.com.pl)

Internet Source

<1 %

63

Denis Lafortune, Michel Béramis, Anne-Marie Daubèze, Nathalie Boissot, Alain Palloix.

"Partial Resistance of Pepper to Bacterial Wilt Is Oligogenic and Stable Under Tropical Conditions", Plant Disease, 2005

Publication

<1 %

64

E Ramon, Z Efendi, H Kusnadi, S Yuliasari, A Ishak, WA Wulandari. "Utilization of oil palm waste as animal feed for Bali cattle in Margomulyo Village, Central Bengkulu", IOP Conference Series: Earth and Environmental Science, 2022

Publication

<1 %

65

Nassar, M. K., Z. S. Goraga, and G. A. Brockmann. "Quantitative trait loci segregating in crosses between New Hampshire and White Leghorn chicken lines:

<1 %

## IV. Growth performance", Animal Genetics, 2015.

Publication

- 
- 66 R Susanti, A Yuniastuti. "Hatchability genotype of Central Javanese local ducks based on ovomucoid gene", Journal of Physics: Conference Series, 2020 <1 %

Publication

- 
- 67 T.O. Okeno, A.K. Kahi, K.J. Peters. "Evaluation of breeding objectives for purebred and crossbred selection schemes for adoption in indigenous chicken breeding programmes", British Poultry Science, 2013 <1 %

Publication

- 
- 68 TOYOHICO NOSO, PENNY SWANSON, VALENTINE A. LANCE, HIROSHI KAWAUCHI. "Isolation and characterization of glycosylated and non-glycosylated prolactins from alligator and crocodile", International Journal of Peptide and Protein Research, 2009 <1 %

Publication

- 
- 69 David Weisburd, Chester Britt, David B. Wilson, Alese Wooditch. "Basic Statistics in Criminology and Criminal Justice", Springer Science and Business Media LLC, 2020 <1 %

Publication

- 
- 70 Hartati, M Luthfi, D Ratnawati, B D P Soewandi. "Detection of growth hormone <1 %

(GH | Mspl, GHR | AluI, Pit1 | HinfI) genes polymorphism and its association with body weight of Grati-Bali Cattle (*Bos sondaicus*)", IOP Conference Series: Earth and Environmental Science, 2021

Publication

71

M. Garcia, W. Huanca, L. Echevarria.  
"Reproductive performance of purebred and crossbred Zebu cattle under artificial insemination in the Amazon tropics", Animal Science, 2010

Publication

<1 %

72

Steven S. Beall, William E. Biddison, Dale E. McFarlin, Henry F. McFarland, Leroy E. Hood.  
"Susceptibility for multiple sclerosis is determined, in part, by inheritance of a 175-kb region of the TcR V $\beta$  chain locus and HLA class II genes", Journal of Neuroimmunology, 1993

Publication

<1 %

73

Submitted to Universiti Malaysia Sabah

Student Paper

<1 %

74

Wen, Zujia, Jianhua Chen, Raja Amjad Waheed Khan, Zhijian Song, Meng Wang, Zhiqiang Li, Jiawei Shen, Wenjin Li, and Yongyong Shi.  
"Genetic association between NRG1 and schizophrenia, major depressive disorder, bipolar disorder in Han Chinese population",

<1 %

# American Journal of Medical Genetics Part B Neuropsychiatric Genetics, 2016.

Publication

75

[journals.ashs.org](http://journals.ashs.org)

Internet Source

<1 %

76

[nrronline.org](http://nrronline.org)

Internet Source

<1 %

77

R. Hissa, S. Saarela, J. Balthazart, R.J. Etches.  
"Annual variation in the concentrations of  
circulating hormones in capercaillie (Tetrao  
urogallus)", General and Comparative  
Endocrinology, 1983

Publication

<1 %

78

Schunter, C., J. C. Garza, E. Macpherson, and  
M. Pascual. "SNP development from RNA-seq  
data in a nonmodel fish: how many  
individuals are needed for accurate allele  
frequency prediction?", Molecular Ecology  
Resources, 2014.

Publication

<1 %

Exclude quotes Off

Exclude matches Off

Exclude bibliography Off