

Short Communication:
Assessment of cogongrass
(*Imperata cylindrica* (L.)
P.Beauv.) genetic variation in
Java, Indonesia using atpB-rbcL
and trnL-F intergenic spacer

by Murni Dwiati

Submission date: 20-Oct-2022 12:00PM (UTC+0700)

Submission ID: 1930324695

File name: 2._2022_Susanto_Dwiati_Biodiversitas_naskah.pdf (688.98K)

Word count: 5386

Character count: 29029

45
Short Communication:
Assessment of cogongrass (*Imperata cylindrica* (L.) P.Beauv.) genetic variation in Java, Indonesia using *atpB-rbcL* and *trnL-F* intergenic spacer

AGUS HERY SUSANTO*, MURNI DWIATI

Faculty of Biology, Universitas Jenderal Soedirman, Jl. Dr. Suparno 63, Banyumas 53122, Central Java, Indonesia.
Tel.: +62-281-638794, Fax.: +62-281-631700, *email: susanto1408@gmail.com

Manuscript received: 29 November 2022. Revision accepted: 30 April 2022.

Abstract. Susanto AH, Dwiati (2022). Short Communication: Assessment of cogongrass (*Imperata cylindrica* (L.) P.Beauv.) genetic variation in Java, Indonesia using *atpB-rbcL* and *trnL-F* intergenic spacer. Biodiversitas 23: 2760-2767. Cogongrass (*Imperata cylindrica* (L.) P.Beauv.) is an invasive species commonly found in tropical and subtropical regions worldwide, consequently threatening global plant biodiversity, and sustainable agriculture. Nevertheless, some of its potential as a medicinal herb, phytoremediation agent, and alternative energy have been reported. genetic variation of cogongrass has been studied in certain areas, however genetic variation in Java, Indonesia has not been reported. Therefore, this study aims to assess the genetic variation of cogongrass in Java, Indonesia using *atpB-rbcL* and *trnL-F* intergenic spacer (IGS). Twenty-one plant samples were collected randomly from nine different sites and two pairs of universal primers were employed to amplify the markers. The results showed a much lower genetic difference among subpopulations in comparison to genetic variation within individual subpopulations. This result indicates that the subpopulations have high connectivity, meaning the rapid change in terrestrial ecosystems on the island does not affect the cogongrass population.

Keywords: *atpB-rbcL*, cogongrass, genetic variation, Java, *trnL-F*

INTRODUCTION

Cogongrass (*Imperata cylindrica* (L.) P.Beauv.) is one of the ten most bothersome weed species in the world. It is widely distributed over tropical and subtropical regions, causing serious problems in agriculture and vegetable production in many areas. This plant is considered the reason for much loss of native habitats in the southeastern USA. The invasiveness and persistence are related to the biological features, such as extensive rhizome system, adaptability to poor soils and fire, drought tolerance, easy seed dispersal by wind, and high plasticity (MacDonald 2004). In Indonesia, cogongrass populations cover areas of approximately 8.5 million ha (Irzaman et al. 2021).

Cogongrass is a diploid C4 grass that is known to be harmful in 73 countries, thereby generating a risk to global biodiversity and sustainable agriculture (Burrell et al. 2015). On the other hand, certain potentials of cogongrass for human life have been reported. Some of its parts, either singly or as a mixture have been traditionally used to treat several diseases, such as wounds, sores, aches, back pain, fever, urinary stones, hypertension, and several sexual problems (Hidayat and Rachmadiyanto 2017). The whole plant extract was proven to show effective antibacterial and antiparasitic activities (Lalthanpuui and Zarzokimi 2019), while the roots could accumulate and immobilize copper thereby functioning as a phytoremediation agent in Cu-polluted environments (Vidal et al. 2020). Another possible usage of cogongrass as biofuel or alternative energy has also been intensively explored (Kartikasari et al. 2013;

Oladokun et al. 2016; Hidayat et al. 2018; Loh et al. 2021).

The sufficiently large number of cogongrass varieties is possibly due to the occurrence of natural hybrids with different flowering phenology between both parental ecotypes. The reproductive isolation led to population substructure (Chang and Chou 2006). Nevertheless, no significant genetic differences were observed between *I. cylindrica* and *I. brasiliensis* in the southeastern USA. Instead, population substructure seemed to occur within *I. cylindrica* (Lucardi et al. 2014a, 2014b). This was assumed because of the distinction in the methods of control on *I. cylindrica* in some states. Two lineages of *I. cylindrica* show very different distribution patterns were found (Lucardi et al. 2020).

Genetic diversity and population structure of cogongrass in the USA have been previously assessed using amplified fragment length polymorphisms (AFLPs) marker. However, this study was limited to a particular region of the country. Larger scale analysis of the cogongrass genetic diversity has been performed involving the possibility of anthropogenic influences. As many as 2,507 polymorphic loci were found from 676 cogongrass individuals. No significant relationship between sample size and genetic diversity of cogongrass population in the USA was observed (Lucardi et al. 2020). Other molecular markers such as *atpB-rbcL* and *trnL-F* intergenic spacers (IGS) can be used to assess genetic diversity of cogongrass population. This is because both cpDNA markers have a very high mutation rate as is commonly the case with non-coding sequences (Bi et al. 2018). In combination, both

markers have been employed to discover the evolutionary history of balsams (*Impatiens* spp.) in southern India (Shajitha et al. 2016).

As in many other places in the tropical and subtropical regions, the cogongrass population in Java, Indonesia is also interesting to examine. Java is known as the most populated one in the world (Alsya et al. 2021), causing rapid changes in terrestrial ecosystems condition, which leads to influence cogongrass genetic variation. Therefore, this study aims to assess the genetic variation of cogongrass in Java using *atpB-rbcL* and *trnL-F* IGS as molecular markers. The knowledge of the cogongrass population's genetic variation in Java is useful for providing a better strategy to manage the weed species.

MATERIALS AND METHODS

Plant materials

Twenty one plant samples were collected randomly from nine different sites in Java, namely Purwokerto, Banyumas, Kebasen, Kebocoran, Baturaden Botanic Gardens, Jetis Beach, Purworejo, Yogyakarta, and Ponorogo (Figure 1; Table 1).

Procedures

Preparing plant materials

Individual plants were pulled up to the roots, then wrapped using a tissue previously moisturized with a little water, put in a plastic bag, and tied with a rubber bracelet. All the samples were later planted inside pots in the greenhouse of the Faculty of Biology, Universitas Jenderal Soedirman, Purwokerto, Central Java, Indonesia.

DNA extraction

The genomic DNAs were extracted according to the CTAB method (Doyle and Doyle 1990). A 0.1 g leaf was cut into pieces and dropped in a 1.5 mL microcentrifuge tube, then 800 μ L CTAB solution previously heated at 65°C for 30 mins was added. The leaf pieces were pounded with a mini-bead beater up to a delicate level and left at 65°C for an hour. This was left to cool down at room temperature and 500 μ L chloroform-isoamyl alcohol (CIAA) was added, then mixed gently and subsequently centrifuged at 12,000 rpm for 5 mins. The supernatant was transferred into another 1.5 mL microcentrifuge and 1/10 volume of 3M sodium acetate was added. Afterward, isopropanol of 2/3 of the total volume was added and mixed gently by inverting the tube several times. This mixture was kept in the freezer for 24 hours before being centrifuged at 12,000 rpm for 10 mins.

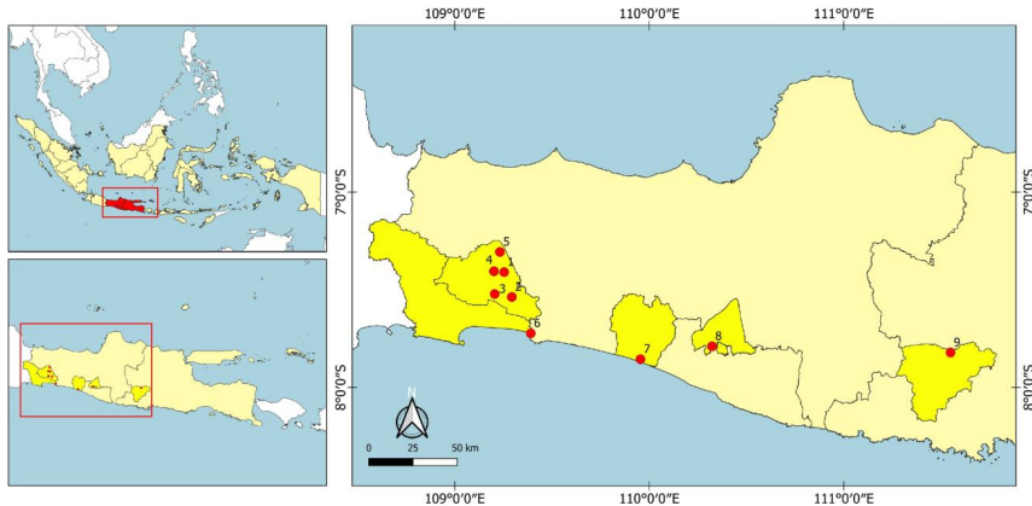


Figure 1. Sampling sites of *I. cylindrica* in Java, Indonesia. Note: see Table 1 for sampling location

Table 1. The sampling sites of *I. cylindrica* in Java, Indonesia

No.	Sampling site	Site code	Altitude (m asl)	Coordinate		Sample number
				S	E	
1.	Purwokerto Utara, Banyumas, Central Java	PWT	79	7°24' 33''	109° 15' 14''	3
2.	Banyumas, Central Java	BMS	110	7° 32' 11''	109° 17' 37''	2
3.	Kebasen, Banyumas, Central Java	KBS	68	7° 31' 17''	109° 12' 19''	2
4.	Kebocoran, Banyumas, Central Java	KBC	85	7° 24' 17''	109° 12' 06''	2
5.	Baturaden Botanic Gardens, Banyumas, Central Java	KRB	644	7° 18' 22''	109° 13' 56''	3
6.	Jetis Beach, Cilacap, Central Java	J	6	7° 43' 21''	109° 23' 26''	3
7.	Purworejo, Central Java	PWJ	21	7° 51' 17''	109° 57' 18''	2
8.	Yogyakarta City, Special Territory of Yogyakarta	YOG	136	7° 47' 20''	110° 19' 21''	2
9.	Ponorogo, East Java	PON	57	7° 49' 15''	111° 32' 56''	2

The supernatant was removed, followed by adding 500 μ L of 70% ethanol to the DNA pellet and centrifuged again at 12,000 rpm for 5 mins. After removing the supernatant, the pellet was air-dried and dissolved in 100 μ L TE buffer, then the DNA solution was stored at 4°C before quantification and PCR amplification. Quantification was performed using genequant, while DNA was visualized in a 1.5% agarose gel electrophoresis using 1x TBE buffer.

Polymerase chain reaction (PCR)

The extracted genomic DNAs were used as PCR templates to amplify *atpB-rbcL* and *trnL-F* IGS. A pair of universal primers were used to amplify *atpB-rbcL* IGS, namely 5'-ACATCKARTACKGGACCAATAA-3' as the forward primer and 5'-AACACCAGCTTTRAATCCAA-3' as the reverse (Chiang and Schaal 2000). Meanwhile, 5'-GGTTCAGATCCCTCTATCCC-3' as a forward primer and 5'-ATTTGAAGTGGTGACACGAG-3' as a reverse primer, were applied to amplify *trnL-F* IGS (Taberlet et al. 1991). The individual PCR mixture was produced in a total volume of 10 μ L containing 2.5 μ L DNA template of 31 g/ μ L, 0.25 μ L primers (forward and reverse) of 1 μ M, 5 μ L Gotaq green (Promega), and 2.49 μ L nuclease-free water was prepared. Subsequently, the mixture was subjected to a PCR condition, namely pre-denaturation at 94°C for 3 mins, followed by 33 cycles which consisted of denaturation at 94°C for 45 secs each, primer annealing at 55°C for 45 secs, primer extension at 72°C for 2 mins, and proceeded by a final extension at 72°C for 3 mins. The PCR reaction was performed in a Bio-Rad-T100™ Thermal Cycler machine. Then, the PCR mixture was stored at 4°C before visualization in a 1% agarose gel electrophoresis using 1x TBE buffer.

DNA sequencing

The PCR products were first purified using QIA Quick kit (Qiagen), which employed the automated dideoxy method (Sanger et al. 1977) with terminator labeling, then DNA sequencing was carried out at the Firstbase Malaysia.

Data analysis

DNA sequences were edited using BioEdit version 7.0.4.1 (Hall 1999) and later checked manually. Sequence alignment was conducted with Clustal W (Thompson et al. 1994), which was also implemented in the BioEdit software. Both haplotype (*h*) and nucleotide (π) diversities were used as parameters for genetic diversity. These were calculated using Arlequin version 3.5 (Excoffier and Lischer 2010), while to identify the presence of population structure, AMOVA was performed in the Arlequin software as well.

RESULTS AND DISCUSSION

Genomic DNAs were successfully extracted from all plant samples, yielding concentrations that ranged from 1,100 to 3,200 ng/ μ L. Meanwhile, the purities (A260 nm/280 nm ratio) varied from 1.538 to 2.750, meaning the DNAs could be properly used as PCR-templates to amplify the molecular markers.

Two PCR bands were observed in the respective sample, both *atpB-rbcL* and *trnL-F* IGS (Figures 2 and 3). However, it was certain that the correct bands were 912 bp for *atpB-rbcL* and 383 bp for *trnL-F* IGS, since they were more likely of the expected sizes. The amplicons produced by *atpB-rbcL* primers were slightly longer than those obtained in *Synedrella nodiflora* and *Eleutheranthera ruderalis* (Asteraceae), which had 880 bp long *atpB-rbcL* IGS sequences (Susanto and Dwiati 2019). Manual editing on the sequences of the putative *atpB-rbcL* IGS generated only 830 bp length. Meanwhile, the amplicons produced by *trnL-F* primers were also somewhat longer than the counterparts obtained in *Diospyros* spp. (Ebenaceae), showing 367 bp long *trnL-F* IGS sequences (Wanda et al. 2021). After manual editing, the putative *trnL-F* IGS had 372 bp length, which was still longer than the sequences found in *Diospyros* spp.

The blasting carried out to the NCBI database showed that both sequences were undoubtedly *atpB-rbcL* and *trnL-F* IGS. High percentages of identity with high query covers were observed, even the sequence of *trnL-F* IGS had 98.06% identity with total cpDNA genome of *I. cylindrica* (Acc no. J26351433.1) in a query cover of 98% (Table 2). All the sequences obtained in this study have been submitted to NCBI GenBank for accession numbers.

Some variations exist within the 21 sequences of *atpB-rbcL* IGS, in form of either insertion-deletions or base substitutions, and a similar case was also observed in *trnL-F* IGS. Eight haplotypes based on *atpB-rbcL* IGS were obtained, while only two haplotypes were found with *trnL-F* IGS, hence the mutation types and sites are summarized in Table 3.

There are more transversions than transitions obtained in either *atpB-rbcL* IGS or *trnL-F* IGS (Table 3). This is reasonable, since more possibilities with transversions rather than those of transitions exist. There are eight types of transversions, while only four transitions are found. Additionally, transversion seems to have more effects on the amino acid sequence alteration than transition does. Even the larger effects of transversion had also been reported on gene expression (Guo et al. 2017). Nevertheless, transversion is more energy-consuming in comparison to transition because of the more complicated changes in the nucleotide base molecular structure, where purine is replaced with and vice versa (Wang et al. 2015).

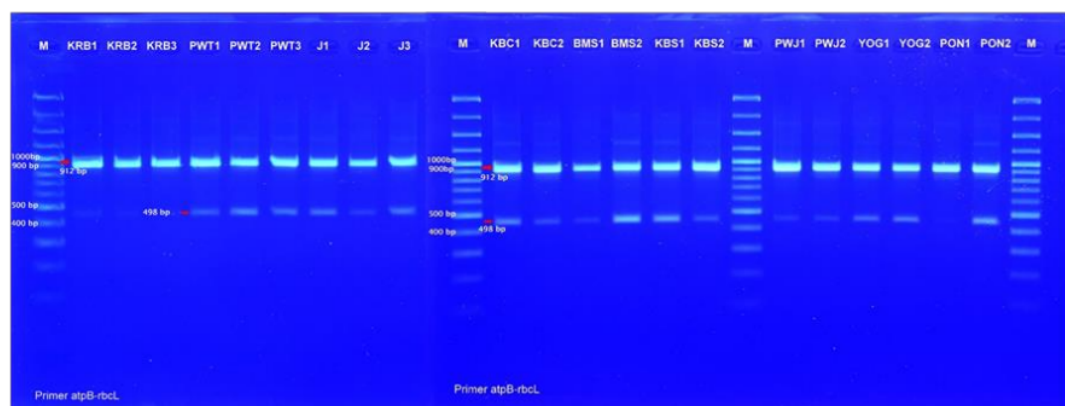


Figure 2. Electrophoretic profiles of *atpB-rbcL* IGS. M: 100 bp DNA ladder SMOBIO, KRB: Baturraden Botanic Gardens, PWT: Purwokerto, J: Jetis Beach, KBC: Kebocoran, BMS: Banyumas, KBS: Kebasen, PWJ: Purworejo, YOG: Yogyakarta, and PON: Ponorogo

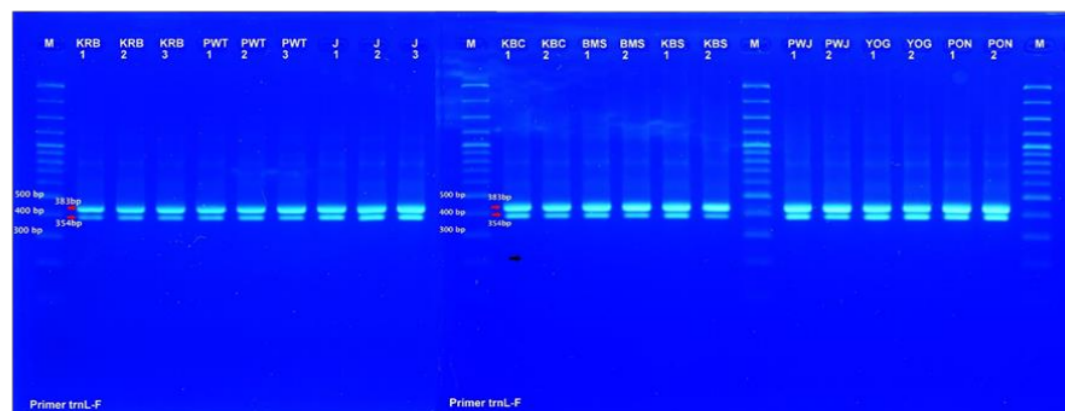


Figure 3. Electrophoretic profiles of *trnL-F* IGS. M: 100 bp DNA ladder SMOBIO, KRB: Baturraden Botanic Gardens, PWT: Purwokerto, J: Jetis Beach, KBC: Kebocoran, BMS: Banyumas, KBS: Kebasen, PWJ: Purworejo, YOG: Yogyakarta, and PON: Ponorogo

Table 2. BLAST results of the *atpB-rbcL* IGS and *trnL-F* IGS sequences to NCBI GenBank

Sequences blasted	Description of subjects	% Query cover	E value	% Identity	Accession number
<i>atpB-rbcL</i> IGS	<i>Imperata cylindrica</i> cpDNA complete genome	98	0	97.68	KU291466.1
	<i>Imperata cylindrica</i> cpDNA complete genome	98	0	97.47	MZ351433.1
	<i>Saccharum rufipilum</i> cpDNA complete genome	98	0	97.27	LS974679.1
	<i>Triplidium ravenae</i> cpDNA complete genome	98	0	97.27	LS974678.1
<i>trnL-F</i> IGS	<i>Imperata cylindrica</i> cpDNA complete genome	98	0	98.06	MZ351433.1
	<i>Chionachne kenigii</i> cpDNA partial genome	98	0	97.09	MT610087.1
	<i>Saccharum hildebrandii</i> cpDNA complete genome	98	0	96.85	MF563371.1
	<i>Sarga versicolor</i> cpDNA complete genome	98	0	96.85	MT942630.1

Table 3. Haplotypes of *I. cylindrica* in Java, Indonesia

Molecular marker	Haplo-type	Sample code	Location(s)	Mutation type(s)	Site(s)
<i>atpB-rbcL</i> IGS	1	PWT1, PWT2, PWT3 KRB1, KRB2, KRB3 KBS1, KBS2 BMS1 JET3 PWJ 1, PWJ2 YOG 2 PON1	Purwokerto Baturraden BG Kebasen Banyumas Jetis Beach Purworejo Yogyakarta Ponorogo	Common type	-
	2	BMS2	Banyumas	Insertion with A Insertion with G Insertion with T Transition T → C Transversion T → G Transversion T → G	13, 766, 767 585 278 289, 297, 301, 667, 679, 680 670, 688, 692, 696, 701, 706 285, 310, 672, 697, 700, 710
	3	KBC1	Kebocoran	Insertion with G Deletion of A	765 75
	4	KBC2	Kebocoran	Insertion with G Insertion with C Deletion of A Transversion T → A	737 736 75 732
	5	JET1	Jetis Beach	Insertion with C	13
	6	JET2	Jetis Beach	Insertion with C	737
	7	YOG1	Yogyakarta	Insertion with A	43
	8	PON2	Ponorogo	Insertion with A Insertion with C	762 737
<i>trnL-F</i> IGS	1	PWT2 KBC1, KBC2 KBS1, KBS2 BMS1, BMS2 JET1, JET2, JET3 PWJ 1, PWJ2 YOG1, YOG 2 PON1, PON2	Purwokerto Kebocoran Kebasen Banyumas Jetis Beach Purworejo Yogyakarta Ponorogo	Common type	-
	2	PWT1, PWT3, KRB1, KRB2, KRB3	Purwokerto Baturraden BG	Deletion of G,T,A,T Deletion of G,T Deletion of G,T,G,A,A Transition A → G Transition G → A Transition C → T Transition T → C Transversion A → T Transversion T → A Transversion A → C Transversion C → A Transversion G → T Transversion T → G Transversion G → C Transversion C → G	84 – 87 286 – 287 311 – 315 34, 61, 63, 67, 72, 112, 152, 157, 158, 162, 170, 193, 203, 207, 219, 224, 225, 256, 257, 258, 278, 292 11, 108, 110, 113, 165, 177, 246, 288 4, 8, 9, 28, 90, 121, 122, 127, 139, 176, 184, 188, 189, 194, 196, 234, 275, 276, 279 41, 45, 69, 100, 117, 169, 181, 233, 236, 238, 280, 318, 331 2, 12, 37, 38, 52, 91, 96, 98, 118, 135, 147, 173, 180, 199, 211, 218, 228, 248, 250, 255, 290, 291, 296, 306, 341, 351 30, 33, 55, 59, 92, 151, 154, 192, 195, 254, 259, 295 6, 29, 39, 48, 75, 128, 156, 159, 167, 208, 209, 212, 213, 215, 220, 227, 230, 231, 232, 235 14, 15, 47, 164, 183, 270, 277, 317, 323 1, 3, 22, 40, 46, 64, 102, 103, 111, 114, 115, 116, 119, 126, 131, 133, 134, 137, 138, 143, 153, 179, 187, 190, 265, 267, 273 17, 18, 60, 163, 182, 269, 328 35, 54, 66, 294, 329 19, 94, 252, 324

Based on *atpB-rbcL* IGS, the haplotype diversity (h) was 0.3809 ± 0.0165 , while the nucleotide diversity (π) was only 0.0201 ± 0.0103 . Lower h was obtained with *trnL-F* IGS, i.e. 0.0952 ± 0.0322 , however, the π was higher than the value found with *atpB-rbcL* IGS, i.e. 0.2277 ± 0.1139 . The relatively low genetic variation of cogongrass in Java is presumably related to the high invasiveness of the species, hence most samples used in this study are of the same origin. Similarly, no hybridization among four different clonal lineages of cogongrass in the USA occurred despite geographical overlap, indicating that the plant showed limited evolutionary potential to adapt to novel environmental conditions. Even selection for favorable alleles from a broad genetic base seemed likely not to occur after arrival to a new environment, causing a very low genetic diversity (Burrell et al. 2015).

The limited genetic variation did not correlate with the phenotypical performance of cogongrass. Both morpho-anatomical and physiological characters, show significant differences among altitudes (Ahmad et al. 2020). Moreover, soil water stress had been experimentally proven to reveal a stronger impact on the species distribution in comparison to nutrient deficiency (Zhang et al. 2021). Phenotypic plasticity is a common phenomenon in invasive plants for adaptation to various conditions, such as sunny, shaded, moist, or dry sites, that makes the species as ideal weeds (Sultan and Matesanz 2015). Allelopathy substances from cogongrass root exudates, such as ferulic acid, had been shown to initiate its successful invasiveness (Shen et al. 2020).

AMOVA on the cogongrass in Java revealed that variation within populations was much higher than among populations, which applied to both *atpB-rbcL* and *trnL-F* IGS (Tables 4 and 5).

Table 4. AMOVA on cogongrass population in Java based on *atpB-rbcL* IGS

Source of variation	df	Sum of squares	Variance components	Percentage of variations
Among populations	8	4.286	0.02735	5.47
Within populations	12	5.667	0.47222	94.53
Total	20	9.953	0.49957	
Fixation index (F_{ST}) = 0.05475				

Table 5. AMOVA on cogongrass population in Java based on *trnL-F* IGS

Source of variation	df	Sum of squares	Variance components	Percentage of variations
Among populations	8	3.881	0.01154	2.46
Within populations	12	5.500	0.45833	97.54
Total	20	9.381	0.46987	
Fixation index (F_{ST}) = 0.02456				

The much higher variations within populations in comparison to among populations led to low fixation indices, indicating high connectivity or gene flow among members of cogongrass species in Java, meaning no population structure was observed. Correspondingly, high connectivity was also reported among populations of *Synedrella nodiflora* (Asteraceae), a weed species in this area (Susanto et al. 2018). The cogongrass gene flow among populations was reported as mainly assisted by wind dispersal of seeds and spikelets. In addition, a non-wind-borne dispersal mechanism might as well occur for the vegetative parts of the plant. Dense woody vegetation had been shown to slow down the wind dispersal of cogongrass seeds, but it was a less effective barrier for the non-wind-borne dispersal mechanism (Zenger et al. 2011). Biological characteristics, such as extensive rhizome system, adaptability to poor soils and fire, drought tolerance, readily wind dispersal of seeds, and high plasticity had been contributing to the invasiveness and persistence of cogongrass (MacDonald 2004).

Regarding problems with agricultural productivities, cogongrass invasiveness was potentially overcome with earthworm application. In experiments, using the plant's root extracts up to a concentration level of 80% mixed with soil from cogongrass land showed that earthworms tend to cover the soil surface and improve its quality. Subsequently, when these engineered soils were used to grow upland rice seedlings, significant differences in many vegetative parameters were observed in comparison to soils without earthworm application (Kilowasid et al. 2021). On the other hand, glyphosate applications seemed ineffective to control cogongrass. Instead, other abiotic factors such as drought and shade need to be studied for effectiveness (Zaccaro 2016; Enloe et al. 2018). Most recently, an integrated control system involving cultural, mechanical, and chemical approaches was introduced. However, biological control and revegetation were recommended for the long-term management of the weed species (Lebrun 2020; Rusdy 2020). Bioherbicides, such as the type causing wilt disease in cogongrass could also be introduced (Tamur et al. 2019). However, invasive plants like cogongrass in forest regeneration ought to be considered in the management strategies assisting the persistence of native forest communities (Lázaro-Lobo et al. 2021).

The difficulty in controlling the invasiveness is mainly due to its dispersal through both extensive rhizome systems and wind-assisted seeds. Cogongrass rhizomes make more than 60% of the total biomass and these support rapid growth after mowing or burning. Meanwhile, the seeds are very prolific and capable of traveling over a long distance without significant loss in viability and germination rate (Minogue et al. 2018). The changes in soil microbial and chemical composition because of the occupation by cogongrass affect the growth of succeeding plant communities (Radunzel-Davis 2019). Nevertheless, cogongrass presence was reported to be suppressed by creeping rhizomes of other grass species, such as *Sorghum halepense* (Yamada and Nemoto 2020).

Different altitudes ranging from 0 m asl. in Jetis Beach to approximately 800 m asl. in Baturraden Botanic Gardens

were used as sampling sites in this study. Also, various conditions of terrestrial ecosystems among the sites existed as the consequences of rapid physical development on Java. However, no significant genetic differences among populations were observed, meaning the changes in ecosystem conditions did not affect cogongrass on the island. Conversely, variation among several cogongrass ecotypes in Taiwan was detected, thereby supporting the molecular data previously reported (Chang and Chou 2006). Different phenotypic characteristics, especially concerning foliar anatomy were observed among cogongrass ecotypes naturally grown in the Botanic Gardens of Rajshahi University Bangladesh. This was presumably related to adaptation against drought and saline stress (Sima et al. 2018).

In conclusion, based on both *atpB-rbcL* and *trnL-F* IGS much lower genetic differences among subpopulations of cogongrass in Java, Indonesia in comparison to genetic variation within individual subpopulations were observed. This indicates that the subpopulations show high connectivity, or in other words, the rapid changes in terrestrial ecosystems on Java do not affect the cogongrass population.

ACKNOWLEDGEMENTS

The authors thank the Institute for Research and Public Service, Universitas Jenderal Soedirman for funding this project through the scheme of *Riset Dasar* Universitas Jenderal Soedirman, Banyumas, Indonesia financial year 2021 with the contract number T/585/UN23.18/PT.01.03/2021. The authors are also grateful to Yeni Fatmawati for the laboratory assistance rendered.

REFERENCES

- 27 Ahm 9 KS, Wazarat A, Mehmood A, Ahmad MSA, Tahir MM, Nawaz F, Ahmed H, Zafar M, Ulfat A. 2020. Adaptations in *Imperata cylindrica* (L.) Raeusch. and *Cenchrus ciliaris* L. for altitude tolerance. *Biologia* 75: 183-198. DOI: 10.2478/s11756-019-00380-2.
- Alsya VD, Triwahyuningtyas N, Murtatik S. 2021. Analysis of factors affecting poverty level in Java Island. *Intl J Soc Service Res* 1 (2): 150-161. DOI: 10.46799/ijssr.v1i2.29.
- Bi Y, Zhang MF, Xue J, Dong R, Du YP, Zhang XH. 2018. Chloroplast genomic resources for phylogeny and DNA barcoding: A case study on *Fritillaria*. *Sci Rep* 8: 1184. DOI: 10.1038/s41598-018-19591-9.
- Burrell AM, Pepper AE, Hodnett G, Goolsby JA, Overholt WA, Racelis 1 J, Diaz R, Klein PE. 2015. Exploring origins, invasion history and 7 genetic diversity of *Imperata cylindrica* (L.) P. Beauv. (Cogongrass) in the United States using genotyping by sequencing. *Mol Ecol* 24: 2177-2193. DOI: 10.1111/mec.13167.
- Chang IF, Chou CH. 2006. Ecotypic variation of *Imperata cylindrica* populations in Taiwan: II. Physiological and biochemical evidence. *Bot Stud* 47: 175-184.
- Chiang TY, Schaal B. 2000. Molecular evolution and phylogeny of the *atpB-rbcL* spacer of chloroplast DNA in the true mosses. *Genome* 43: 417-426. DOI: 10.1139/g99-116.
- Doyle JJ, Doyle JL. 1990. A rapid total DNA preparation procedure for fresh plant tissue. *Focus* 12 (1): 13-15. DOI: 10.2307/2419362.
- Enloe SF, Lucardi RD, Loewenstein NJ, Lauer DK. 2018. Response of twelve Florida cogongrass (*Imperata cylindrica*) populations to herbicide treatment. *Invasive Plant Sci Manag* 11: 82-88. DOI: 10.1017/imp.2018.12.
- 5 Exco 5 er L, Lischer HEL. 2010. Arlequin suite ver 3.5: A new series of 29 rams to perform population genetics analyses under Linux and Windows. *Mol Ecol Resour* 10: 564-567. DOI: 10.1111/j.1755-0998.2010.02847.x.
- 13 Guo 13 McDowell IC, Nodzenski M, Scholtens DM, Allen AS, Lowe WL, 35 Jly TE. 2017. Transversions have larger regulatory effects than transitions. *BMC Genomics* 18: 394. DOI: 10.1186/s12864-017-3785-4.
- 12 Hall TA. 1999. BioEdit: A user-friendly biological sequence alignment editor and analysis program for Windows 95/98/NT. *Nuc Acids Symp* 21 Series 41: 95-98.
- 21 Hida 21 S, Rachmadiyanto AN. 2017. Utilization of alang-alang (*Imperata cylindrica* (L.) Raeusch.) as traditional medicine in Indonesian Archipelago. *Proc 1st SATREPS Conf* 1: 82-89.
- Hida 14 S, Abu Bakar MS, Yang Y, Phusunti N, Bridgwater AV. 2018. 14 racterisation and Py-GC/MS analysis of *Imperata cylindrica* as poten 28 biomass for bio-oil production in Brunei Darussalam. *J Anal Appl Pyrolysis* 134: 510-519. DOI: 10.1016/j.jaap.2018.07.018.
- Irzaman, Yustaeni D, Aminullah, Irmansyah, Yuliarto B. 2021. Purity, morphological, and electrical characterization of silicon dioxide from cogon grass (*Imperata cylindrica*) using different ashing temperatures. *Egypt J Chem* 64: 4143-4149. DOI: 10.21608/ejchem.2019.15430.1962.
- Kartikasari SD, Nurhaika, S, Muhibuddin A. 2013. Potential of cogongrass (*Imperata cylindrica* (L.) Beauv.) in ethanol production using *Zymomonas mobilis* bacteria. *Jurnal Sains dan Seni Pomits* 2: 1-11. [Indonesian]
- Kilowasid LMI 8 Hasmar LOJ, Afa LO, Sutariati GAK, Namriah, Rakian TC. 2021. Effect of cogongrass (*Imperata cylindrica* L.) root extract on earthworms, arbuscular mycorrhizae fungi spore, and growth of upland rice (*Oryza sativa* L.) for local Kambowa variety. *IOP Conf Series Earth Environ Sci* 807. DOI: 10.1088/1755-1315/807/3/032034.
- Lalt 30 Juii PB, Zarokimi KL. 2019. Chemical profiling, antibacterial and antiparasitic studies of *Imperata cylindrica*. *J Appl Pharm Sci* 9: 117-121. DOI: 10.7324/JAPS.2019.91216.
- Láz 43 obo A, Lucardi RD, Ramirez-Reyes C, Ervin GN. 2021. Region- 40 e assessment of fine-scale associations between invasive plants and forest regeneration. *For Ecol Manag* 483: 118930. DOI: 10.1016/j.foreco.2021.118930.
- Lebrun A. 2020. Cogongrass Control Program in the Southeastern United States – Alabama, Georgia, Mississippi and South Carolina. US Department of Agriculture, Riverdale Maryland.
- Loh SH, Yee W, Lee SWY, Tan YT, Phua PSP, Cha TS. 2021. 4 Cogongrass (*Imperata cylindrica*) leaf extract counteracts the effects of nitrogen limitation and induces changes in biomass, lipid, and fatty acid profile in *Chlorella vulgaris* UMT-M1 and *Scenedesmus* sp. KS- 16 2. *Bioenerg Res* 14: 61-69. DOI: 10.1007/s12155-020-10182-z.
- Lucardi RD, Wallace LE, Ervin GN. 2014a. Invasion success in 7 cogongrass (*Imperata cylindrica*): A population genetic approach 32 oring genetic diversity and historical introductions. *Invasive Plant Manag* 7: 59-75. DOI: 10.1614/jpsm-d-13-00029.1.
- Lucardi RD, Wallace LE, Ervin GN. 2014b. Evaluating hybridization as a potential facilitator of successful cogongrass (*Imperata cylindrica*) invasion in Florida, USA. *Biol Invasions* 16: 2147-2161. DOI: 10.1007/s10530-014-0654-9.
- Lucardi RD, Wallace LE, Ervin GN. 2020. Patterns of genetic diversity in highly invasive species: Cogongrass (*Imperata cylindrica*) expansion in the invaded range of the southern United States (US). *Plants* 9 (423): 1-13. DOI: 10.3390/plants9040423.
- 47 Mac 5 nald GE. 2004. Cogongrass (*Imperata cylindrica* L.): Biology, ecology, and management. *Critical Rev Plant Sci* 23: 367-380. DOI: 10.1080/07352680490505114.
- Minogue PJ, Brodbeck BV, Miller JH. 2018. Biology and control of cogongrass (*Imperata cylindrica*) in Southern Forests. IFAS Extension University of Florida, Gainesville. 2018: 1-6 DOI: 10.32473/edis-fr411-2018.
- Oladokun O, Ahmad A, Abdullah TAT, Nyakuma BB, Bello AAH, AlShatri AH. 2016. Multicomponent devolatilization kinetics and thermal conversion of *Imperata cylindrica*. *Appl Therm Eng* 105: 931-940. DOI: 10.1016/j.applthermaleng.2016.04.165.
- Radunzel-Davis LA. 2019. Cogongrass (*Imperata cylindrica* (L.) Beauv.) in Louisiana: Cause and Consequence. [Thesis]. Louisiana State University, Louisiana.
- Rusdy M. 2020. *Imperata cylindrica*: Reproduction, dispersal, and controls. *CAB Rev* 15 (038): 1-9. doi: 10.1079/PAVSNNR202015038.

- Sanger F, Nicklen S, Coulson A. 1977. DNA sequencing with chain-terminating. *Proc Natl Acad Sci USA* 74: 5463-5467. DOI: 10.1073/pnas.74.12.5463.
- Shajitha PP, Dhanesh NR, Ebin PJ, Laly J, Aneesha D, Reshma J, Augustine J, Linu M. 2016. A combined chloroplast *atpB-rbcL* and *trnL-F* phylogeny unveils the ancestry of balsams (*Impatiens* spp.) in the Western Ghats of India. *3 Biotech* 6: 258. DOI: 10.1007/s13205-016-0574-8.
- Shen Y, Tang H, Wu W, Shang H, Zhang D, Zhan X, Xing B. 2020. Role of nano-biochar in attenuating the allelopathic effect from: *Imperata cylindrica* on rice seedlings. *Environ Sci Nano* 7: 116-126. DOI: 10.1039/c9en00828d.
- Sima S, Roy A, Akther M, Joarder N. 2018. Cross-sectional anatomy of leaf blade and leaf sheath of cogon grass (*Imperata cylindrica* L.). *J Bio Sci* 25: 17-26. DOI: 10.3329/jbs.v25i0.37494.
- Sultan SE, Matesanz S. 2015. An ideal weed: Plasticity and invasiveness in *Polygonum cespitosum*. *Ann New York Acad Sci* 1360: 101-119. DOI: 10.1111/nyas.12946.
- Susanto AH, Nuryanto A, Daryono BS. 2018. High connectivity among *Synedrella nodiflora* populations in Java Island based on intergenic spacer *atpB-rbcL*. *Biosaintifika* 10 (1): 41-47. DOI: 10.15294/biosaintifika.v10i1.12038.
- Susanto AH, Dwiati M. 2019. Genetic difference between two phenotypically similar members of Asteraceae by the use of intergenic spacer *atpB-rbcL*. *Biosaintifika* 11 (3): 393-399.
- Taberlet P, Gielly P, Pautou G, Bouvet J. 1991. Universal primers for amplification of three non coding regions of chloroplast DNA. *Plant Mol Biol* 17: 1105-1109. DOI: 10.1007/BF00037152.
- Tamur HA, Al-Janabi HJ, Abood Al-Janabi JK, Mohsin LY, Al-Yassiry ZAN. 2019. Characterization and antagonistic activity of new causal agent of wilt disease in *Imperata cylindrica* (*Marasmius palmivorus*). *J Pure Appl Microbiol* 13: 1525-1536. DOI: 10.22207/JPAM.13.3.24.
- Thompson JD, Higgins DG, Gibson TJ. 1994. Clustal W: Improving the sensitivity of progressive multiple sequence alignment through sequence weighting, position-specific gap penalties and weight matrix choice. *Nuc Acids Res* 22: 4673-4680. DOI: 10.1093/nar/22.22.4673.
- Vidal C, Ruiz A, Ortiz J, Larama G, Perez R, Santander C, Ademar P, Ferreira A, Cornejo P. 2020. Antioxidant responses of phenolic compounds and immobilization of copper in *Imperata cylindrica*, a plant with potential use for bioremediation of Cu contaminated environments. *Plants* 9: 1397. DOI:10.3390/plants9101397.
- Wanda IF, Djuita NR, Chikmawati T. 2021. Molecular phylogenetics of Malesian Diospyros (Ebenaceae) based *trnL-F* spacer sequences. *Biodiversitas* 22: 4106-4114. DOI: 10.13057/biodiv/d220959.
- Wang J, Raskin L, Samuels DC, Shyr Y, Guo Y. 2015. Genome measures used for quality control are dependent on gene function and ancestry. *Bioinformatics* 31: 318-323. DOI: 10.1093/bioinformatics/btu668.
- Yager LY, Miller DL, Jones J. 2011. Woody shrubs as a barrier to invasion by cogongrass (*Imperata cylindrica*). *Invasive Plant Sci Manag* 4: 207-211. DOI: 10.1614/ipsm-d-10-00052.1.
- Yamada S, Nemoto M. 2020. Effects of weed abundance and frequency of hand weeding on the establishment of transplanted *Imperata cylindrica*. *Landscape Ecol Eng* 16: 1-9. DOI: 10.1007/s11355-019-00398-3.
- Zaccaro MLM. 2016. Cogongrass (*Imperata cylindrica* (L.) Beauv) Control using Chemical Treatments with Cover Cropping Systems. [Thesis]. Mississippi State University, Mississippi.
- Zhang B, Yuan Y, Shu L, Grosholz E, Guo Y, Hastings A, Cuda JP, Zhang J, Zhai L, Qiu J. 2021. Scaling up experimental stress responses of grass invasion to predictions of continental-level range suitability. *Ecology* 102 (8): e03417. DOI: 10.1002/ecy.3417.

Short Communication: Assessment of cogongrass (*Imperata cylindrica* (L.) P.Beauv.) genetic variation in Java, Indonesia using *atpB-rbcL* and *trnL-F* intergenic spacer

ORIGINALITY REPORT

19%

SIMILARITY INDEX

14%

INTERNET SOURCES

15%

PUBLICATIONS

%

STUDENT PAPERS

PRIMARY SOURCES

- | | | |
|---|---|-----|
| 1 | www.esp.org
Internet Source | 1 % |
| 2 | Emeka-Nwabunnia , Ijeoma. "Vancomycin-Resistant <i>Staphylococcus aureus</i> Isolates from HIV Positive Patients in Imo State, Nigeria", <i>Science Journal of Public Health</i> , 2015
Publication | 1 % |
| 3 | id.scribd.com
Internet Source | 1 % |
| 4 | Bijaya K. Uprety, Erin N. Morrison, R.J. Neil Emery, Scott C. Farrow. "Customizing lipids from oleaginous microbes: leveraging exogenous and endogenous approaches", <i>Trends in Biotechnology</i> , 2021
Publication | 1 % |
| 5 | complete.bioone.org
Internet Source | 1 % |

6	www.smujo.id Internet Source	1 %
7	cupola.gettysburg.edu Internet Source	1 %
8	www.sciencegate.app Internet Source	1 %
9	Ying Guo, Mengke Wang, Caiyun Gao, Fang-Fang Fu, Yousry A. El-Kassaby, Tongli Wang, Guibin Wang. "Spatial prediction and delineation of Ginkgo biloba production areas under current and future climatic conditions", Industrial Crops and Products, 2021 Publication	1 %
10	P. P. Shajitha, N. R. Dhanesh, P. J. Ebin, Joseph Laly, Devassy Aneesha, John Reshma, Jomy Augustine, Mathew Linu. "A combined chloroplast atpB-rbcL and trnL-F phylogeny unveils the ancestry of balsams (Impatiens spp.) in the Western Ghats of India", 3 Biotech, 2016 Publication	1 %
11	DANIEL E. RUZZANTE. "Phylogeography of the Percichthyidae (Pisces) in Patagonia: roles of orogeny, glaciation, and volcanism : PHYLOGEOGRAPHY OF PATAGONIAN PERCICHTHYIDAE", Molecular Ecology, 07/17/2006	<1 %

12

research.vu.nl

Internet Source

<1 %

13

authors.library.caltech.edu

Internet Source

<1 %

14

doctoradornn.ufro.cl

Internet Source

<1 %

15

S Majumdar. "The promoter and the enhancer region of the KLK 3 (prostate specific antigen) gene is frequently mutated in breast tumours and in breast carcinoma cell lines", British Journal of Cancer, 03/1999

Publication

<1 %

16

Burrell, A. Millie, Alan E. Pepper, George Hodnett, John A. Goolsby, William A. Overholt, Alexis E. Racelis, Rodrigo Diaz, and Patricia E. Klein. "Exploring origins, invasion history and genetic diversity of Imperata cylindrica (L.) P. Beauv. (Cogongrass) in the United States using genotyping by sequencing", Molecular Ecology, 2015.

Publication

<1 %

17

academicjournals.org

Internet Source

<1 %

18

bmcbgenomics.biomedcentral.com

Internet Source

<1 %

19	jast-journal.springeropen.com Internet Source	<1 %
20	www.researchgate.net Internet Source	<1 %
21	www.spandidos-publications.com Internet Source	<1 %
22	www.nature.com Internet Source	<1 %
23	Chao Luo, Wulue Huang, Huseyin Yer, Troy Kamuda et al. "Complete Chloroplast Genomes and Comparative Analyses of Three Ornamental Impatiens Species", Frontiers in Genetics, 2022 Publication	<1 %
24	ijas.iaurasht.ac.ir Internet Source	<1 %
25	zoolstud.sinica.edu.tw Internet Source	<1 %
26	Frank Hailer, E. A. Schreiber, Joshua M. Miller, Iris I. Levin, Patricia G. Parker, R. Terry Chesser, Robert C. Fleischer. "Long-term isolation of a highly mobile seabird on the Galapagos", Proceedings of the Royal Society B: Biological Sciences, 2010 Publication	<1 %

- | | | |
|----|--|------|
| 27 | Katielle Silva Brito Kateivas, Paulo Araquém Ramos Cairo, Pedro Henrique Santos Neves, Roger Sebastian Silva Ribeiro et al. "The impact of NOx and SO2 emissions from a magnesite processing industry on morphophysiological and anatomical features of plant bioindicators", Acta Physiologiae Plantarum, 2022
Publication | <1 % |
| 28 | Md Sumon Reza, Cheong Sing Yun, Shammya Afroze, Nikdalila Radenahmad et al. "Preparation of activated carbon from biomass and its' applications in water and gas purification, a review", Arab Journal of Basic and Applied Sciences, 2020
Publication | <1 % |
| 29 | researchonline.jcu.edu.au
Internet Source | <1 % |
| 30 | fjfsdata01prod.blob.core.windows.net
Internet Source | <1 % |
| 31 | medpub.litbang.pertanian.go.id
Internet Source | <1 % |
| 32 | Heather A. Hager, Lauren D. Quinn, Jacob N. Barney, Thomas B. Voigt, Jonathan A. Newman. "Germination and establishment of bioenergy grasses outside cultivation: a multi- | <1 % |

region seed addition experiment", Plant Ecology, 2015

Publication

33

Wang Xi, Yan Gao, Zhangyu Cheng, Chaoyun Chen, Maozhen Han, Kang Ning. "Using QC-Blind for quality control and contamination screening of bacteria DNA sequencing data without reference genome", Cold Spring Harbor Laboratory, 2018

Publication

<1 %

34

garuda.kemdikbud.go.id

Internet Source

<1 %

35

genome.cshlp.org

Internet Source

<1 %

36

iopscience.iop.org

Internet Source

<1 %

37

unsworks.unsw.edu.au

Internet Source

<1 %

38

G. M. Unger, H. Konrad, T. Geburek. "Does spatial genetic structure increase with altitude? An answer from Picea abies in Tyrol, Austria", Plant Systematics and Evolution, 2011

Publication

<1 %

39

Lisa Y. Yager, Deborah L. Miller, Jeanne Jones. "Woody Shrubs as a Barrier to Invasion by

<1 %

Cogongrass () ", Invasive Plant Science and Management, 2017

Publication

40

Yasmani Alba-Reyes, Maylier Pérez-Gil, Ernesto L. Barrera, Yannay Casas-Ledón, Luis E. Arteaga-Pérez. "Comparison of Raw and Torrefied *Dichrostachys cinerea* as a Fuel for Cogeneration Systems: A Life Cycle Assessment", Waste and Biomass Valorization, 2022

Publication

<1 %

41

[bio-protocol.org](https://www.bio-protocol.org)

Internet Source

<1 %

42

psasir.upm.edu.my

Internet Source

<1 %

43

www.srs.fs.usda.gov

Internet Source

<1 %

44

www.microbiologyjournal.org

Internet Source

<1 %

45

Bo Zhang, Yingdan Yuan, Karolina M. Pajerowska-Mukhtar, Michelle Afkhami, Alan Hastings, Jiangxiao Qiu, Jinchi Zhang. "Microbial's Effects on Invasive Grass' Response to Water and Nutrient Stress", Research Square, 2020

Publication

<1 %

46

M Okamoto. "High frequency of several PIG-A mutations in patients with aplastic anemia and myelodysplastic syndrome", Leukemia, 04/2006

Publication

47

Rima D. Lucardi, Lisa E. Wallace, Gary N. Ervin. "Invasion Success in Cogongrass (*Imperata cylindrica*): A Population Genetic Approach Exploring Genetic Diversity and Historical Introductions", Invasive Plant Science and Management, 2017

Publication

48

Bo Zhang, Yingdan Yuan, Lele Shu, Edwin Grosholz, Yuxi Guo, Alan Hastings, James P. Cuda, Jinchu Zhang, Lu Zhai, Jiangxiao Qiu. "Scaling up experimental stress responses of grass invasion to predictions of continental - level range suitability", Ecology, 2021

Publication

49

Chikayo Takemoto. "Comparison of two methods for evaluating bone marrow metastasis of neuroblastoma: Reverse transcription-polymerase chain reaction for tyrosine hydroxylase and magnetic resonance imaging", Pediatrics International, 8/2004

Publication

50

Inger-Marie E. Vilcins. "Molecular detection of *Rickettsia*, *Coxiella* and *Rickettsiella* DNA in

<1 %

<1 %

<1 %

<1 %

<1 %

three native Australian tick species",
Experimental and Applied Acarology,
03/19/2009

Publication

51

MARITA A. SYDES, ROD PEAKALL. " Extensive
clonality in the endangered shrub
(Haloragaceae) revealed by allozymes and
RAPDs ", Molecular Ecology, 2002

<1 %

Publication

52

Rima D. Lucardi, Lisa E. Wallace, Gary N. Ervin.
"Patterns of Genetic Diversity in Highly
Invasive Species: Cogongrass (*Imperata
cylindrica*) Expansion in the Invaded Range of
the Southern United States (US)", Plants, 2020

<1 %

Publication

53

Tai-Yuan Li, Han-Lai Zeng, Yin Ping, Hui Lin,
Xue-Lian Fan, Zhi-Gang Guo, Chu-Fu Zhang. "
Construction of a stable expression vector for
subsp. and its application in studying the
effect of the bacterium as an endophytic
bacterium in rice ", FEMS Microbiology
Letters, 2007

<1 %

Publication

Exclude quotes On

Exclude matches Off

Exclude bibliography On