

# Paper 9

*by* Nur Prihatiningsih

---

**Submission date:** 04-Jan-2021 11:58AM (UTC+0700)

**Submission ID:** 1482821088

**File name:** Biodiversitas\_Isolation\_and\_Characteriz.\_EM.pdf (272.09K)

**Word count:** 5055

**Character count:** 27868

37

## Short Communication:

# Isolation and characterization of the endophytic bacteria, and their potential as maize diseases control

ENDANG MUGIASTUTI<sup>✉</sup>, SUPRAYOGI, NUR PRIHATININGSIH, LOEKAS SOESANTO

Faculty of Agriculture, Universitas Jenderal Soedirman, Jl. Dr. Suparno, Karangwangkal, Purwokerto Utara, Banyumas 53123, Central Java, Indonesia.  
Tel./fax.: +62-281-638791, ✉email: endangmugiaстuti@gmail.com.

Manuscript received: 13 November 2019. Revision accepted: 6 April 2020.

**Abstract.** Mugiaстuti E, Suprayogi, Prihatiningsih N, Soesanto L. 2020. Short Communication: Isolation And Characterization Of The Endophytic Bacteria, And The Potential As Maize Diseases Control. Biodiversitas 21: 1809-1815. Sheath blight and bacterial wilt are diseases that can reduce maize production. Biological control with the endophytic bacteria offers environmentally friendly control for these pathogens. The study aimed to isolate and characterize the endophytic bacteria morphologically and biochemically and to study its potential to control maize diseases, especially sheath blight and bacterial wilt causing pathogens. The study was conducted at the Plant Protection Laboratory, Faculty of Agriculture, Jenderal Soedirman University, from April to August 2019. The study consisted of four stages: isolation and characterization of endophytic bacteria, the antagonism test of the endophytic bacterial to *R. solani*, the antagonism test of the endophytic bacteria to *Pantoea* sp., and the mechanical test of the endophytic bacteria as biological control agents and plant growth-promoting bacteria. Based on the research, four endophytic bacteria isolates have been successfully isolated, and characterized successfully and found have the potential to be developed as biopesticides to control maize disease, especially *R. solani* and *Pantoea* sp. *Bacillus* sp. endophytic from the root (BK.A1; BK.A3; PP.A5) and *Bacillus* sp. endophytic from the stem (PPD.B2) can suppress the growth of *R. solani* by more than 50%, have a strong antagonistic index against *Pantoea* sp (> 4), and can produce protease and lipase enzyme, and phosphate solubilization.

**Keywords:** *Bacillus*, fluorescent *Pseudomonas*, *Pantoea*, *Rhizoctonia solani*

## INTRODUCTION

Maize is a strategic food commodity in the world. In Indonesia, the government seeks to achieve self-sufficiency in maize through increasing production of sustainable maize. However, these efforts have faced several obstacles; one of them is the presence of plant diseases such as sheath blight caused by *Rhizoctonia solani* Kuhn, and bacterial wilt caused by *Pantoea stewartii*. *R. solani* can infect up to the midrib of the cob (Djaenuddin et al. 2017), resulting in up to 100% decrease in the yield (Muis 2007). *Pantoea* sp. can attack all stages of the plant causing wilting and leaf blight, and is known as Stewart's wilt (Pataky 2004; Ammar et al. 2014). The pathogens can cause 40-100% yield loss.

Over the past 3 decades, the concept of sustainable and environmentally friendly agriculture has been carried out by minimizing the use of chemicals, both synthetic fertilizers, and pesticides. In the management of pests and plant diseases, biological control is developed by applying biological agents including endophytic bacteria (Shanti and Vittal 2013). Many endophytic bacteria can pass the endodermic barrier across from the root cortex to the vascular system, and subsequently develop as endophytes in stems, leaves, tubers, and other organs (Compant et al. 2005). The use of endophytic bacteria as biological agents has an advantage compared to rhizosphere bacteria because

endophytic bacteria live and survive in the plant tissue during plant development, thus protecting the plants.

*Bacillus* sp. and fluorescent *Pseudomonas* are reported to be able to live as endophytes and are widely used as biological control agents for soil-borne and air-borne diseases. The endophytic bacteria could control plant diseases through several mechanisms including competition, hyperparasitism, producing microbial inhibiting compounds (antibiotics, lysins, other physical or chemical disorders), enhancing plant resistance, and promoting plant growth (Compant et al 2005, Pal and McSpadden-Gardener 2006; Rosenblueth and Martinez-Romero 2006).

Based on the mechanisms, the use of endophytic bacteria isolated from maize, both upland and lowland, suggested potentially alternative control for sheath blight (*R. solani*) and bacterial wilt (*Pantoea* sp). The research aimed to isolate and characterize morphologically and biochemically the endophytic bacteria as well as their potential to control pathogens that cause disease in maize especially *R. solani* and *Pantoea* sp.

## MATERIALS AND METHODS

16

This research was conducted at the Laboratory of Plant Protection, Faculty of Agriculture, Jenderal Soedirman

University, Purwokerto, Central Java, Indonesia, from April to August 2019

#### Isolation *Rhizoctonia solani*

*Rhizoctonia solani* was isolated from maize with sheath blight symptoms and there was sclerotium as a resistant structure from the pathogenic fungi in Banyumas. *R. solani* isolation was carried out based on Al-Fadh<sup>6</sup> et al. 2019. Disease samples were cut 0.5 x 0.5 cm, then sterilized with NaOCl (1%) for 2 min<sup>6</sup> and rinsed with sterile water 3 times. Disease samples pieces were then dried using sterile filter papers, and transferred to Petri dishes containing PDA medium to obtain pure *R. solani* isolates.

#### Isolation *Pantoea* sp.

*Pantoea* sp. was isolated from diseased maize samples taken from the maize growing area in Banyumas Regency according to Coplin et al. (2012); Aini et al. (2013) and Desi et al. (2014). Diseased leaves or stems were washed with running water, then dried with a tissue. Diseased samples were cut 1.5 x 5 cm, then sterilized with ethanol 70% and rinsed with sterile water 3 times. Furthermore, the sample was crushed with 5 ml of sterile distilled water using a sterile mortar. The bacterial suspension was streaked on nutrient agar and incubated 3-5 days. Bacterial colonies that exhibit the character of *Pantoea* sp. were yellow, shiny, slimy, flat or convex, then separated as pure cultures of *P. stewartii* candidates. The culture was then tested by Gram Reaction (KOH test), Hugh-Leifson test, pigment production in YDC medium, oxidase test, hypersensitivity test, and pathogenicity test on maize.

#### Isolation and characterization of endophytic bacteria

Sampling for the isolation of endophytic bacteria was carried out in Banyumas and Purbalingga, Central Java, Indonesia, with purposive stratified random sampling. Samples were taken from two areas of altitude, i.e., low-moderate lands (0-500 m above sea level), and highlands (> 500 m above sea level) (Nuryanto et al., 2014). In each district, 2 locations were selected for the low-medium lands, and 1 location for the highlands. Age of maize plants was 20-30 days after planting, when the number of endophytic microbial populations that can be cultured is in the highest population (Cavaglieri et al. 2009).

The endophytic bacteria were isolated from the roots and stems of healthy maize plants. Roots and stems were washed, sterilized with 70% ethanol (1 minute), 20% sodium hypochlorite (5 minutes) and Ringer's thiosulfate solution (5 minutes). Separately, the roots and stems of 10 g each were crushed with 90 ml PBS on a sterile mortar. Subsequently, samples were plated on NA and Kings B media (Cavaglieri et al. 2009). To isolate *Bacillus* sp., the suspension was heated for 10 minutes at 80 °C, before plating on NA. Bacterial isolates were further purified and characterized, such as morphological characteristics, gram properties, catalase tests, and hypersensitivity tests

#### The antagonism test of endophytic bacterial to *Rhizoctonia solani*

The antagonism test of endophytic bacteria on *R. solani* was carried out using the dual culture method. The level of inhibition of antagonist is calculated using the formula (Abidin et al. 2015).

$$I = \frac{C-T}{C} \times 100\%$$

Where:

I : The level of inhibition of antagonist (%)

C: The radius of pathogen colonies opposite antagonist

T: The radius of the colony of pathogens towards antagonist

#### The antagonism test of endophytic bacterial to *Pantoea* sp.

Antagonism testing was carried out using the double-layer test method (Santiago et al. 2015). Endophytic bacteria were tested were grown on the nutrient agar medium, incubated at 28 °C for 48 hours. In the upside-down position, 1 ml of chloroform was added to the cup lid and left for 2 hours. Next, add 5 mL so that 0.6% water containing 0.5 mL of *Pantoea* sp. bacterial suspension. The culture was re-incubated for 24 hours, and there were clear zones around the antagonistic bacterial colony. The antibiotic activity was assessed based on the diameter of the clear zone compared to the diameter of the colony. Characterization of the type of antibiosis can be divided into bactericidal and bacteriostatic types based on Djatmiko et al. (2007).

#### The mechanism test of endophytic bacteria as controlling agents biological and plant growth-promoting microbial

The testing mechanism of endophytic bacteria was carried out for bacteria that have the potential in testing the antagonism of the fungus *R. solani* and *Pantoea* sp.

#### Protease test

The activity of the ability of antagonistic bacteria to produce extracellular protease enzymes was tested using Skim Milk Agar (SMA) medium. Each bacterium to be tested was grown in a medium SMA and incubated at 28 °C for 24-48 hours. The presence of clear zones around the colony shows that positive bacteria produce protease enzymes (Abed et al. 2016). The protease activity index is assessed based on the diameter of the clear zone compared to the diameter of the colony.

$$\text{Protease index} = \frac{(\text{clear zone diameter} - \text{colony diameter})}{\text{Colony diameter}}$$

#### Lipase test

Detection of the ability of bacteria to produce the enzyme lipase was done by growing the antagonistic bacteria on a medium containing 1% Tween 80. The presence of lipase enzyme activity was demonstrate by milky white sediment around the bacterial colony, after incubating at 28 °C for 4-7 days the lipolytic index was measured using a formula Djuric et al. (2011).

$$\text{Lipolytic index} = \frac{(\text{Milky white diameter-colony diameter})}{\text{Colony diameter}}$$

#### Phosphatase test

Detection of the ability of bacteria to produce the enzyme phosphatase was done by growing bacterial isolat<sup>19</sup> on Pikovskaya medium. After incubating for 7 days at 28 C, the presence of a clear zone around the bacterial colony shows that the bacteria has the ability to produce the phosphatase enzyme to dissolve phosphates. The solubility index is measured using a formula (Farooq and Bano 2013)

$$\text{Phosphatase Index} = \frac{(\text{Clear zone diameter-Colony diameter})}{\text{Colony diameter}}$$

## RESULTS AND DISCUSSION

### 26 Isolation and characterization of endophytic bacteria

The results of the exploration, isolation, and characterization of endophytic bacteria obtained 23 isolates of endophytic bacteria, consisted of 9 isolates of the fluorescent *Pseudomonas* and 14 isolates of *Bacillus* sp. (Table 1). Fluorescent *Pseudomonas* colony on King's B was round, with a flat edge, and yellowish-white, to greenish-yellow, gram-negative, rod-shaped, non-spore and fluorescent under ultraviolet light. Singh et al. 2017 reported fluorescent *Pseudomonas* showed light green, yellowish, creamy, circular, slimy, regular-irregular characteristics. Bacteria have short-long rod forms. The Fluorescent *Pseudomonas* isolates is gram-negative, which can form catalase, a positive oxidase, needed to grow aerobes. *Bacillus* sp. was observed with a spherical colony having cell rod-shaped, gram-positive, and endospores within cells (Table 1.). Slepecky and Hempill (2006); Amin et al. (2015) reported *Bacillus* sp. has the characteristics of a circular colony and punctiform (small round), variations in the entire margin and lobate, white dull, non-slimy, gram-positive, has endospores, flagellum and some are motile.

Based on its distribution, fluorescent *Pseudomonas* and *Bacillus* sp. found in all sampling locations, high or low-medium lands. This shows that fluorescent *Pseudomonas* and *Bacillus* sp. spread and can live in various altitudes, both high and low-medium land. Bacon and Hilton 2002; Ganeshan and Kumar 2005 reported *P. fluorescens* and *Bacillus* sp., are species of bacteria with a wide range of life and are very adaptive in various environments. Both types of bacteria are also found in the roots or corn stalks. *Bacillus* sp. and *Pseudomonas* sp. including a group of endophytic bacteria have a wide range of life and more

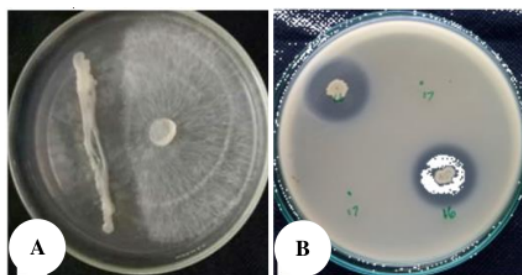
isolated in maize (Ganeshan and Kumar 2005; Orole and Adejumo 2011; Costa et al. 2013)

#### Antagonism test between the endophytic bacteria

##### ag<sup>28</sup> *R. solani*

Based on the results of *in vitro* tests (Table 2), 24 isolates of the endophytic bacteria were able to inhibit the growth of *R. solani*, with varying degrees of inhibition. The endophytic bacteria that have inhibition rates above 50%, i.e. fluorescent *Pseudomonas* BK.A1 (51%), *Bacillus* sp. B.K.A1 (55.39%), *Bacillus* sp BK.A3 (51.52%), PP.A5 (50.66%), and PP<sup>27</sup>32 (50.8%). The effect of the endophytic bacteria in inhibiting the growth of *R. solani* is inversely proportional to the dry weight mycelium. The gre<sup>39</sup> the percentage of inhibition of endophytic bacteria to the growth of *R. solani*, the smaller the dry weight mycelium (Table 2) Endophytic bacteria can inhibit the growth of *R. solani*, which were shown by the inhibitory zone in the area bordering the bacterial streak (Figure 1.A).

The endophytic bacteria have anti-pathogenic properties and can produce antibiotic compounds. The ability of the endophytic bacteria to control plant pathogens occurs through the mechanism of antibiosis, competition, lysis, inducing resistance and producing growth substances. Bacteria capable of producing secondary metabolites that can inhibit growth or damage pathogens (Hastuti et al. 2014). These compounds, including alkaloids, phenols, flavonoids, glycosides, and phytoalexin (Soesanto et al. 2010). Fluorescent *Pseudomonas* can produce various types of antibiotics including phenazine-1-carboxylic acid, pyocyanin, pyrrolnitrin, and pyoluteorin, 2,4-diacetyl phloroglucinol (Phl). Phl is a phenolic metabolite with<sup>34</sup> bacterial and antifungal (Jain and Das 2016). *Bacillus* species can produce various kinds of volatile compounds and diffusible with strong inhibitory activity against plant pathogens (Lim et al. 2017).



**Figure 1.** Antagonism test between the endophytic bacteria against *R. solani* (A) and *Pantoea* sp. (B)



**Table 1.** Isolation and characterization of endophytic bacteria.

Land	Sampling location	Sample	Gram test	Catalase test	Oxidase test	Colony morphology	Colony pigment	Fluorescence on KB medium	Cell morphology	Endospores	Isolate
Highland	Purbalingga, Pratin 7.13'33" S, 109.17'21" E, 1.190 m asl	Root	-	+	+	Round	yellowish-white	+	Medium rod	+	fluorescent <i>Pseudomonas</i> PP.A1
		13 <sup>th</sup> Root	+	+	+	Round	White	-	Small rod	+	<i>Bacillus</i> sp. PP.A3
		Root	+	+	+	Round	White	-	Medium rod	+	<i>Bacillus</i> sp. PP.A5
		Stem	+	+	+	Round	yellowish-white	+	Medium rod	-	fluorescent <i>Pseudomonas</i> PP. B4
Medium-Lowland	Banyumas, Baturaden 7.19'11" S, 109.14'29" E, 520 m asl	Root	+	+	+	Round	Greenish-yellow	+	Medium rod	-	fluorescent <i>Pseudomonas</i> BB.A2
		Root	+	+	+	Round	White	-	Small rod	+	<i>Bacillus</i> sp. BB.A3
		Stem	+	+	+	Round	White	-	Medium rod	+	<i>Bacillus</i> sp. BB.B4
		Root	+	+	+	Round	yellowish-white	+	Medium rod	-	fluorescent <i>Pseudomonas</i> BS.A2
	Banyumas, Sumbang 7.21'54" S, 109.17'33"E, 200 m asl	Root	+	+	+	Round	White	-	Medium rod	+	<i>Bacillus</i> sp. BS.A1
		Root	+	+	+	Round	White	-	Small rod	+	<i>Bacillus</i> sp. BS.A3
		Stem	+	+	+	Round	White	-	Small rod	+	<i>Bacillus</i> sp. BS. B1
		Root	+	+	+	Round	Greenish-yellow	+	Small rod	-	fluorescent <i>Pseudomonas</i> PB. A 4
Purbalingga, Bojongsari 7.20'12" S, 109.20'22" E, 190 m asl	Purbalingga, Padamara 7.22'28" S, 109.13'24" E, 180 m asl	Stem	+	+	+	Round	White	-	Small rod	+	<i>Bacillus</i> sp. PB. B1
		Stem	+	+	+	Round	White	-	Medium rod	+	<i>Bacillus</i> sp. BB. B3
		Root	+	+	+	Round	Greenish-yellow	+	Small rod	-	fluorescent <i>Pseudomonas</i> PPD A1
		Stem	+	+	+	Round	yellowish-white	+	Medium rod	-	fluorescent <i>Pseudomonas</i> PPD, B1
	Banyumas, Kembaran 7.23'47" S, 109.17'9" E, 110 m asl	Stem	+	+	+	Round	White	-	Medium rod	-	fluorescent <i>Pseudomonas</i> PPD, B5
		Stem	+	+	+	Round	White	-	Small rod	+	<i>Bacillus</i> sp. PPD. B2
		Stem	+	+	+	Round	White	-	Small rod	+	<i>Bacillus</i> sp. PPD. B4
		Root	+	+	+	Round	yellowish-white	+	Medium rod	-	fluorescent <i>Pseudomonas</i> BK. A1
	Banyumas, Kembaran 7.23'47" S, 109.17'9" E, 110 m asl	Root	+	+	+	Round	White	-	Medium rod	+	<i>Bacillus</i> sp. BK.A1
		Root	+	+	+	Round	White	-	Medium rod	+	<i>Bacillus</i> sp. BK.A3
		Stem	+	+	+	Round	White	-	Medium rod	+	<i>Bacillus</i> sp. BK.B3
		Stem	+	+	+	Round	White	-	Medium rod	+	<i>Bacillus</i> sp. BK.B3

**Table 2.** Inhibition of endophytic bacteria against *R. solani*.

Isolate	Inhibition rate (%)	Dry weight mycelium
Control	0	0.093
Endophytic bacteria from the root		
fluorescent <i>Pseudomonas</i> BB.A2	49.00	0.038
fluorescent <i>Pseudomonas</i> BS.A.2	45.00	0.027
fluorescent <i>Pseudomonas</i> BK.A1	51.00	0.017
fluorescent <i>Pseudomonas</i> PPD.A1	10.33	0.059
fluorescent <i>Pseudomonas</i> PP.A1	38.33	0.017
fluorescent <i>Pseudomonas</i> PB.A4	18.00	0.037
<i>Bacillus</i> sp.BB.A3	40.42	0.030
<i>Bacillus</i> sp.BS.A1	48.73	0.016
<i>Bacillus</i> sp. BSA3	37.42	0.039
<i>Bacillus</i> sp. B.K.A1	55.39	0.002
<i>Bacillus</i> sp. B.K.A3	51.52	0.003
<i>Bacillus</i> sp.PP.A3	46.65	0.019
<i>Bacillus</i> sp.PP.A5	50.66	0.009
Endophytic bacteria from the stem		
fluorescent <i>Pseudomonas</i> PPD.B1	27.00	0.020
fluorescent <i>Pseudomonas</i> PPD.B5	49.33	0.013
fluorescent <i>Pseudomonas</i> PP.B4	65.67	0.004
<i>Bacillus</i> sp. BB.B4	44.44	0.026
<i>Bacillus</i> sp. BS.B1	49.74	0.012
<i>Bacillus</i> sp. BK. B3	40.36	0.031
<i>Bacillus</i> sp.PPD.B2	50.8	0.007
<i>Bacillus</i> sp. PPD.B4	39.44	0.036
<i>Bacillus</i> sp. PB.B1	37.29	0.047
<i>Bacillus</i> sp. PB.B3	44.9	0.022

### The endophytic bacterial antagonism test against *Pantoea* sp.

The results of antagonism between the endophytic bacteria and *Pantoea* sp. show varied results. The endophytic bacteria that can inhibit bacterial growth were indicated by the presence of clear zones around the endophytic bacterial colonies (Figure1). From the nine isolate fluorescent, *Pseudomonas* were tested, only three isolates were able to inhibit the growth of the *Pantoea* sp., i.e fluorescent *Pseudomonas* (Pf) BS.A2, Pf BK.A1 Pf PPD.B5. While the isolates Pf BB.A2, Pf PPD.A1, Pf PP.A1, Pf PPD.B1, and Pf PP.B4 are not able to inhibit the growth of pathogenic bacteria. Meanwhile, all isolate *Bacillus* sp. tested (thirteen isolates) were able to inhibit the growth of *Pantoea* sp. (Table 3).

The presence of clear zones around endophytic bacterial colonies showed the ability of endophytic bacteria to produce antibiotics to inhibit the growth of *Pantoea* sp. *P. fluorescens* P60 can produce antibiotics that inhibit the growth of pathogens (Soesanto 2011). *Pseudomonas fluorescens* is reported to produce phenazine-1-carboxylic acid (PCA) and other derivatives, 2,4 diacetyl phloroglucinol (Phl), pyrrolnitrin (PRN) and or pyoluteorin (Plt) (Heydari and Pessarakli 2010). Nasrun and Burhanudin (2016) mention that *P. fluorescens* produce secondary metabolites, i.e. antimicrobial, cyanide acid and 2,4-diacetyl phloroglucinol phenazine, pyrrolnitrin, pyoluteorin antibiotics.

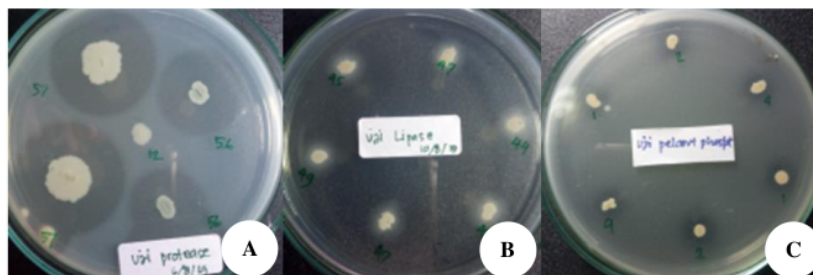
**Table 3.** Inhibition of endophytic bacteria against *Pantoea* sp.

Isolate	Antagonism	Antagonism index	Antagonism category*	Antagonism activity
Endophytic bacteria from the root				
fluorescent <i>Pseudomonas</i> BB.A2	-	0	8 -	-
fluorescent <i>Pseudomonas</i> BS.A.2	+	4.91	Strong	Bacteriostatic
fluorescent <i>Pseudomonas</i> BK.A1	+	4.42	Strong	Bacteriostatic
fluorescent <i>Pseudomonas</i> PPD.A1	-	0	-	-
fluorescent <i>Pseudomonas</i> PP.A1	-	0	-	17
fluorescent <i>Pseudomonas</i> PB.A4	+	5.29	Strong	Bactericidal
<i>Bacillus</i> sp.BB.A3	+	8.17	Strong	Bacteriostatic
<i>Bacillus</i> sp.BS.A1	+	4.00	Strong	Bacteriostatic
<i>Bacillus</i> sp. BSA3	+	5.07	Strong	Bactericidal
<i>Bacillus</i> sp. B.K.A1	+	4.01	Strong	Bacteriostatic
<i>Bacillus</i> sp. B.K.A3	+	4.91	Strong	Bacteriostatic
<i>Bacillus</i> sp.PP.A3	+	6.63	Strong	Bactericidal
<i>Bacillus</i> sp.PP.A5	+	6.56	Strong	Bactericidal
Endophytic bacteria from the stem				
fluorescent <i>Pseudomonas</i> PPD.B1	-	0	-	-
fluorescent <i>Pseudomonas</i> PPD.B5	+	5.86	Strong	Bactericidal
fluorescent <i>Pseudomonas</i> PP.B4	-	0	-	-
<i>Bacillus</i> sp. BB.B4	+	7.80	Strong	Bactericidal
<i>Bacillus</i> sp. BS.B1	+	6.22	Strong	Bacteriostatic
<i>Bacillus</i> sp. BK. B3	+	5.33	Strong	Bacteriostatic
<i>Bacillus</i> sp.PPD.B2	+	5.00	Strong	Bacteriostatic
<i>Bacillus</i> sp. PPD.B4	+	8.75	Strong	Bacteriostatic
<i>Bacillus</i> sp. PB.B1	+	1.67	Weak	Bacteriostatic
<i>Bacillus</i> sp. PB.B3	+	5.67	Strong	Bactericidal

Note: \*Based on Davis and Stout (1971)

**Table 4.** Test results of proteases, lipases and phosphate solubilization

Isolate	Protease test		Lipase test		Phosphate solubilization	
	Activity	Index	Activity	Index	Activity	Index
Endophytic bacteria from the root						
<i>Bacillus</i> sp. B.K.A1	+	3.75	+	3.23	+	1.17
<i>Bacillus</i> sp. B.K.A3	+	3.20	+	3.73	+	1.27
<i>Bacillus</i> sp. PP.A5	+	5.00	+	4.40	+	1.46
Endophytic bacteria from the stem						
<i>Bacillus</i> sp. PPD.B2	+	3.00	+	3.90	+	2.60

**Figure 2.** Hydrolysis enzyme activity, (A) protease, (B) lipase and (C) phosphate solubilization

The level of *Bacillus* sp. B.K.A1's ability to inhibit growth can be shown by the large diameter of the clear zone. The results showed that the antagonism index ranged from 1.67-8.17. Based on this index, most endophytic bacteria have a strong antagonism (index of antagonism > 4) (Davis and Stout 1971). Furthermore, bacterial isolates that showed antagonistic activity were tested for types of antagonism based on Djatmiko (2007). Based on the type of antagonistic activity, ten isolates the endophytic bacteria were bacteriostatic and nine isolates the endophytic bacteria were bactericidal. Bacteriostatic activity, growth inhibition is temporary, it is shown that regrowth of bacteria after being transferred to a new medium, which is free from the influence of antagonistic bacteria. Bactericidal activity, inhibition is permanent. Bacteria were unable to grow even though they are transferred to new medium.

#### Test the mechanism of endophytic bacteria as biological control agents and plant growth-promoting microbes

The mechanism test was carried out on endophytic bacteria that have the potential to control the fungus *R. solani* and *Pantoea* sp., i.e. *Bacillus* sp. B.K.A1, *Bacillus* sp. B.K.A3, *Bacillus* sp. PP.A5, *Bacillus* sp. PPD.B2. The production of compounds related to biocontrol of pathogens and promotion of plant growth in bacterial isolates was evaluated by measuring the production of antimicrobial compounds and hydrolytic enzymes (amylases, lipases, proteases, and chitinases) and phosphate solubilization. The results of enzyme activity tests are shown in Table 4. The four isolates *Bacillus* sp. tested were able to produce protease, lipase and phosphatase enzymes, with varied activity indexes. All isolates of *Bacillus* sp.

those tested had a high index of protease and lipase enzymes (> 3) (Table 4, Figure 2). Protease and lipase enzymes, related to the ability of the endophytic bacteria as biological control agents. Based on the protease and lipase indexes, *Bacillus* sp. PP.A5 can produce the highest proteases and lipase enzymes compared to other isolates. The isolates that have high protein and fat hydrolysis enzymes have the potential as biological control agents because proteins and fats are constituents of pathogen cells (Mota et al 2016). Besides, the protease enzyme is thought to degrade antibiotics produced by fungal or bacterial pathogens. According to Anderson et al. (2014), the extracellular protease enzyme produced by *P. fluorescens* can inactivate antibiotic compounds produced by *Pantoea agglomerans*.

*Bacillus* sp. PPD.B2 has the highest phosphate solubility index. The phosphate solubilization is related to the ability of endophytic bacteria as a plant growth promoter, providing phosphates for plants. Microbes with high phosphate solubility activity are capable of producing and releasing metabolites such as organic acids that chelate cations that are bound to phosphate (especially calcium) and converting them into soluble forms. Solubilization of different forms of phosphate by microbes associated with plants, and increasing its availability for plants, will increase growth and production of the plant (Djuric et al., 2011).

In conclusion, based on research carried out, it has been successfully isolated, morphologically and biochemically characterized four the endophytic bacteria that have the potential to be developed as biopesticides to control maize disease, especially *R. solani* and *Pantoea* sp. They can suppress the growth of *R. solani* by more than 50%, have a

strong antagonistic index against *Pantoea* sp (> 4), and can produce protease and lipase enzyme, and phosphate solubilization.

## ACKNOWLEDGEMENTS

This research was a part of the main study funded by Doctoral Dissertation Grant from the Indonesian Ministry of Research, Technology and Higher Education; for that, I deeply thank for the financial support.

## REFERENCES

- Abed HN, Rouag N, Mouatassam D, Rouabhi A. 2016. Screening for *Pseudomonas* and *Bacillus* antagonistic rhizobacteria strains for the biocontrol of fusarium wilt of chickpea. *Eurasian J Soil Sci* 5 (3): 182-191
- Abidin Z, Aini LQ, Abadi AL. 2015. Effect of *Bacillus* sp. and *Pseudomonas* sp. On the growth of the pathogenic fungus *Sclerotium rolfsii* Sacc. causes of seedling diseases in soybean plants. *Jurnal HPT* 3 (1): 1-10.
- Aini LQ, Suryani L, Sugiharto AN, Abadi A. 2013. Identification of bacterial wilt and leaf blight disease on maize (*Zea Mays*) found in Kediri, Indonesia. *Agri vita* 35 (1): 1-7.
- Al-Fadhal FA, AL-Abedy AN, Alkhafijel DA. 2019. Isolation and molecular identification of *Rhizoctonia solani* and *Fusarium solani* isolated from cucumber (*Cucumis sativus* L.) and their control feasibility by *Pseudomonas fluorescens* and *Bacillus subtilis*. *Egypt J Biol Pest Control* 29 (47): 1-11. DOI: 10.1186/s41938-019-0145-5
- Amin M, Rakhisi Z, Ahmady AZ. 2015. Isolation and Identification of *Bacillus* Species From Soil and Evaluation of Their Antibacterial Properties. *Avicenna J Clin Microb Infec* 2 (1): e23233. DOI: 10.17795/ajcmi-23233.
- Ammar, E, Correa VR, Hogenhout SA, Redinbaugh MG. 2014. Immunofluorescence localization and ultrastructure of Stewart's wilt disease bacterium *Pantoea stewartii* in maize leaves and in its flea beetle vector *Chaetocnema pulicaria* (Coleoptera: Chrysomelidae). *J Microsc Ultrastructure* 2: 28-33.
- Anderson LM, Stockwell VO, Loper JE. 2004. An extracellular protease of *Pseudomonas fluorescens* inactivates antibiotics of *Pantoea agglomerans*. *Phytopathology* 94: 1228-1234
- Bacon CW, Hinton DM. 2002. Endophytic and Biological Control Potential Of *Bacillus Mojavenis* And Related Species. *Biol Control* 23: 274-284.
- Cavaglieri L, Orlando J, Etcheverry M. 2009. Rhizosphere microbial community structure at different maize plant growth stages and root locations. *Microbiol Res* 164 (4): 391-399.
- Compant SB, Duffy, Nowak J, Clement C, Barka EA. 2005. Use of plant growth-promoting bacteria for biocontrol of plant diseases: principles, mechanism of action, and future prospects. *Appl Environ Microbiol* 71 (9): 4951-4959.
- Coplin DL, Redinbaugh MG. 2012. The bacterium *Pantoea stewartii* uses two different Type III secretion systems to colonize its plant host and insect vector. *Appl Environ Microbiol* 78 (17): 6327-6336.
- Costa FG, Zucchi TD, de Melo IS. 2013. Biological control of phytopathogenic fungi by endophytic actinomycetes isolated from maize (*Zea mays* L.). *Braz. Arch Biol Technol* 56 (6): 948-955.
- Davis WW, Stout TR. 1971. Disc plate methods of microbiological antibiotic assay. *Appl Microbiol* 22 (4): 659-665.
- Desi Y, Habazar T, Agustian, Khairul U, Syamsuwirman, Novia P. 2014. Morphological and physiological characterization of *Pantoea stewartii* subsp. *stewartii* from maize. *Jurnal Fotopatologi Indonesia* 10 (2): 45-52. DOI: 10.14692/jfi.10.2.45. [Indonesian]
- Djaenuddin N, Nonci N, Muis A. 2017. Effectiveness of the formula *Bacillus subtilis* TM4 for disease control in maize plants. *Jurnal Fitopatologi Indonesia* 13 (4): 113-118. [Indonesian]
- Djatmiko HA, Arwiyanto T, Hadisutrisno B, Sunarminto BH. 2007. Potential of three bacterial genera from three plant rhizosphere as biological agents controlling Lincat disease. *Jurnal ilmu-ilmu Pertanian* 9 (1): 40-47. [Indonesian]
- Djuric S, Pavic A, Jarak M, Pavlovic S, Starovic M, Pivic R, Josic D. 2011. Selection of indigenous fluorescent pseudomonad isolates from maize rhizospheric soil in Vojvodina as possible PGPR. *Romanian Biotechnol Lett* 16 (5): 6580-6590. DOI: 10.1094/PHI-I-2004-0113-01.
- Farooq U, Bano A. 2013. Screening of indigenous bacteria from rhizosphere of maize (*Zea mays* L.) for their plant growth promotion ability and antagonism against fungal and bacterial pathogens. *J Anim Plant Sci* 23 (6): 1642-1652.
- Ganeshan G, Kumar AM. 2005. *Pseudomonas fluorescens*, a potential bacterial antagonist to control plant diseases. *J Plant Interact* 1 (3): 123-134.
- Hasuti RD, Saraswati R, Sari AP. 2014. The effectiveness of the endophytic microbes in promoting plant growth and controlling leaf blight disease in the lowland rice. *Jurnal Tanah dan Iklim* 38 (2): 109-118. [Indonesian]
- Heydari A, Pessarakhi M. 2010. A review on biological control of fungal plant pathogens using microbial antagonists. *J Biol Sci* 10 (4): 273-290
- Jain A, Das S. 2016. Insight into the interaction between plants and associated fluorescent *Pseudomonas* spp. *Intl J Agron*. DOI: 10.1155/2016/4269010
- Lim SM, Yoon M, Choi GJ, Choi YH, Jang KS, Shin TS, Park HW, Yu NH, Kim YH, Kim J. 2017. Diffusible and volatile antifungal compounds produced by an antagonistic *Bacillus velezensis* G341 against various phytopathogenic fungi. *Plant Pathol J* 33 (5): 488-498. DOI: 10.5423/PPJ.OA.04.2017.0073
- Motaa MS, Gomes CB, Júnior ITS, Moura AB. 2017. Bacterial selection for biological control of plant disease: criterion determination and validation. *Braz J Microbiol* 48: 62-70
- Muis A. 2007. Management of sheath blight disease (*Rhizoctonia solani* Kuhn.) in maize. *Jurnal Litbang Pertanian* 26 (3): 100-103 Desi 2014 [Indonesian]
- Nasrun, Burhanudin. 2016. Evaluation of the efficacy of the formula *Pseudomonas fluorescens* for controlling bacterial wilt (*Ralstonia solanacearum*) patchouli. *Buletin Penelitian Tanaman Rempah dan Obat*, 27 (1): 67-76. [Indonesian]
- Nuryanto B, Priyatmojo A, Hadisutrisno B. 2014. Pengaruh tinggi tempat dan tipe tanaman padi terhadap keparahan penyakit hawar pelepah. *Penelitian Pertanian Tanaman Pangan* 33 (1): 1-8. [Indonesian]
- Orole OO, Adejumo TO. 2011. Bacterial and fungal endophytes associated with grains and roots of maize. *J Ecol Nat Environ* 3 (9): 298-303.
- Pal KK, McSpadden-Gardener B. 2006. Biological Control of Plant Pathogens. *The Plant Health Instructor*. DOI: 10.1094/PHI-A-2006-1117-02
- Pataky JK. 2004. Stewart's wilt of corn. *The Plant Health Instructor*. DOI: 10.1094/PHI-I-2004-0113-01.
- Rosenblueth M, Martinez-Romero E. 2006. Bacterial endophytes and their interaction with hosts (Review). *Mol Plant Microbe Interact* 19 (8): 827-837.
- Santiago TR, Grabowski C, Rossato M, Romeiro RS, Mizubuti ESG. 2015. Biological control of eucalyptus bacterial wilt with rhizobacteria. *Biol Contr* 80: 14-22. DOI: 10.1016/j.bioccontrol.2014.09.007.
- Shanti AT, Vittal RR. 2013. Biocontrol potentials of plant growth promoting rhizobacteria against *Fusarium* wilt disease of cucurbit. *J Plant Pathol* 2 (3): 155-161.
- Singh S, Dutta U, Bhat AK, Gupta S, Gupta V, Jamwal S. 2017. Morphological and biochemical identification of *Pseudomonas* sp. isolated from the rhizosphere of different vegetable crops and study its efficacy on *Solanum melongena* (Brinjal). *J Pharmacogn Phytochem* 6 (2): 22-28
- Slepecky R.A., Hemphill H.E. 2006. The Genus *Bacillus*—Nonmedical. In: Dworkin M, Falkow S, Rosenberg E, Schleifer KH, Stackebrandt E. (eds.). *The Prokaryotes*. Springer, New York.
- Soesanto L, Mugiausti E, Rahayuniati RF. 2010. Study of the antagonistic mechanism of *Pseudomonas fluorescens* P60 against *Fusarium oxysporum* f.sp. *Lycopersici* in tomatoes in vivo. *Jurnal HPT Tropika* 10 (2): 108-115
- Soesanto L, Mugiausti E, Rahayuniati RF. 2011. Utilization of some animal broths as a liquid formula for *Pseudomonas fluorescens* P60 to control *Sclerotium rolfsii* in cucumber plants. *Jurnal Perlindungan Tanaman Indonesia* 17 (1): 7-17.



# Paper 9

## ORIGINALITY REPORT

13%

SIMILARITY INDEX

9%

INTERNET SOURCES

11%

PUBLICATIONS

3%

STUDENT PAPERS

## PRIMARY SOURCES

1

[www.mysciencework.com](http://www.mysciencework.com)

Internet Source

1%

2

Ruth Meike Jaya, Tri Joko. "Plant Growth Promoting and Antagonistic Potential of Endophytic Bacteria Isolated from Melon in Indonesia", Plant Pathology Journal, 2020

Publication

1%

3

Ali Sabir. "Improvement of grafting efficiency in hard grafting grape Berlandieri hybrid rootstocks by plant growth-promoting rhizobacteria (PGPR)", Scientia Horticulturae, 2013

Publication

1%

4

G. Banerjee, A.K. Ray, F. Askarian, E. Ringø. "Characterisation and identification of enzyme-producing autochthonous bacteria from the gastrointestinal tract of two Indian air-breathing fish", Beneficial Microbes, 2013

Publication

1%

5

Submitted to Sam Houston State University

Student Paper

1%

6	<a href="http://ejbpc.springeropen.com">ejbpc.springeropen.com</a> Internet Source	<1 %
7	<a href="http://mafiadoc.com">mafiadoc.com</a> Internet Source	<1 %
8	<a href="http://www.hal.inserm.fr">www.hal.inserm.fr</a> Internet Source	<1 %
9	Joseph J. Coombs. "An applied fingerprinting system for cultivated potato using simple sequence repeats", American Journal of Potato Research, 07/2004 Publication	<1 %
10	<a href="http://worldwidescience.org">worldwidescience.org</a> Internet Source	<1 %
11	<a href="http://link.springer.com">link.springer.com</a> Internet Source	<1 %
12	Michael Rothballer, Michael Schmid, Anton Hartmann. "Chapter 103 Diazotrophic Bacterial Endophytes in Gramineae and Other Plants", Springer Science and Business Media LLC, 2007 Publication	<1 %
13	<a href="http://www.thaiscience.info">www.thaiscience.info</a> Internet Source	<1 %
14	Miriam Memenza-Zegarra, Doris Zúñiga-Dávila. "Chapter 9 Isolation and Characterization of	<1 %

# Antifungal Secondary Metabolites Produced by Rhizobacteria from Common Bean", Springer Science and Business Media LLC, 2019

Publication

15

[www.tandfonline.com](http://www.tandfonline.com)

Internet Source

<1 %

16

[bapendik.unsoed.ac.id](http://bapendik.unsoed.ac.id)

Internet Source

<1 %

17

Submitted to Western Illinois University

Student Paper

<1 %

18

[journal.unnes.ac.id](http://journal.unnes.ac.id)

Internet Source

<1 %

19

[www.sdiarticle2.org](http://www.sdiarticle2.org)

Internet Source

<1 %

20

[oar.icrisat.org](http://oar.icrisat.org)

Internet Source

<1 %

21

[shodhganga.inflibnet.ac.in](http://shodhganga.inflibnet.ac.in)

Internet Source

<1 %

22

[ir.amu.ac.in](http://ir.amu.ac.in)

Internet Source

<1 %

23

[docslide.us](http://docslide.us)

Internet Source

<1 %

24

"Secondary Metabolites of Plant Growth Promoting Rhizomicroorganisms", Springer

<1 %

- 
- |           |   |                |
|-----------|---|----------------|
| <b>25</b> | <a href="http://www.academicjournals.org">www.academicjournals.org</a><br>Internet Source | <b>&lt;1 %</b> |
|-----------|---|----------------|
- 
- |           |   |                |
|-----------|---|----------------|
| <b>26</b> | Microbial Inoculants in Sustainable Agricultural Productivity, 2016.<br>Publication | <b>&lt;1 %</b> |
|-----------|---|----------------|
- 
- |           |   |                |
|-----------|---|----------------|
| <b>27</b> | K. Nagendran, G. Karthikeyan, P. Mohammed Faisal, P. Kalaiselvi, M. Raveendran, K. Prabakar, T. Raguchander. "Exploiting endophytic bacteria for the management of sheath blight disease in rice", Biological Agriculture & Horticulture, 2013<br>Publication | <b>&lt;1 %</b> |
|-----------|---|----------------|
- 
- |           |   |                |
|-----------|---|----------------|
| <b>28</b> | <a href="http://www.pnas.org">www.pnas.org</a><br>Internet Source | <b>&lt;1 %</b> |
|-----------|---|----------------|
- 
- |           |  |                |
|-----------|--|----------------|
| <b>29</b> | "Plant Growth Promoting Rhizobacteria for Agricultural Sustainability", Springer Science and Business Media LLC, 2019<br>Publication | <b>&lt;1 %</b> |
|-----------|--|----------------|
- 
- |           |   |                |
|-----------|---|----------------|
| <b>30</b> | Advances in Endophytic Research, 2014.<br>Publication | <b>&lt;1 %</b> |
|-----------|---|----------------|
- 
- |           |   |                |
|-----------|---|----------------|
| <b>31</b> | <a href="http://apsjournals.apsnet.org">apsjournals.apsnet.org</a><br>Internet Source | <b>&lt;1 %</b> |
|-----------|---|----------------|
- 
- |           |   |                |
|-----------|---|----------------|
| <b>32</b> | <a href="http://scialert.net">scialert.net</a><br>Internet Source | <b>&lt;1 %</b> |
|-----------|---|----------------|
-



---

33	Asma Kefi, Imen Ben Slimene, Ines Karkouch, Christophe Rihouey et al. "Characterization of endophytic Bacillus strains from tomato plants ( <i>Lycopersicon esculentum</i> ) displaying antifungal activity against <i>Botrytis cinerea</i> Pers", World Journal of Microbiology and Biotechnology, 2015 Publication	<1 %
----	---	------

---

34	"The Maize Genome", Springer Nature, 2018 Publication	<1 %
----	--	------

---

35	M. Shehzadi, K. Fatima, A. Imran, M. S. Mirza, Q. M. Khan, M. Afzal. "Ecology of bacterial endophytes associated with wetland plants growing in textile effluent for pollutant-degradation and plant growth-promotion potentials", Plant Biosystems - An International Journal Dealing with all Aspects of Plant Biology, 2015 Publication	<1 %
----	---	------

---

36	Phosphate Solubilizing Microorganisms, 2014. Publication	<1 %
----	---	------

---

37	"Plant Microbes Symbiosis: Applied Facets", Springer Science and Business Media LLC, 2015 Publication	<1 %
----	--	------

---

38	Padaria, Jasdeep Chatrath, Avijit Tarafdar,	<1 %
----	---	------

Rajkumar Raipuria, Showkat Ahmad Lone, Pallavi Gahlot, Najam A. Shakil, and Jitendra Kumar. "Identification of phenazine-1-carboxylic acid gene (phc CD) from *Bacillus pumilus* MTCC7615 and its role in antagonism against *Rhizoctonia solani* : Phenazine biosynthesis gene in *Bacillus pumilus* MTCC7615", *Journal of Basic Microbiology*, 2016.

Publication

39

Samavat Samaneh, Asghar Heydari, Hamid Reza Zamanizadeh, Saeed Rezaee, Ali Alizadeh Aliabadi. "A comparison between *Pseudomonas aureofaciens* (chlororaphis) and *P. fluorescens* in biological control of cotton seedling damping-off disease", *Journal of Plant Protection Research*, 2014

Publication

<1%

Exclude quotes      On  
Exclude bibliography      On

Exclude matches      < 1 words