

# KnE Hassan

*by* Agus Susanto

---

**Submission date:** 01-Apr-2023 10:20AM (UTC+0700)

**Submission ID:** 2052636541

**File name:** KnE\_Hassan\_11827-Article\_Text-58281-1-10-20220914.pdf (739.18K)

**Word count:** 5056

**Character count:** 23874

## Conference Paper

# Genetic Variation in the Calpastatin Gene and its Association with Growth Traits in Batur Sheep

H I H Haren<sup>1,2\*</sup>, D Purwantini<sup>1</sup>, M Y Sumaryadi<sup>1</sup>, A Setyaningrum<sup>1</sup>, A Susanto<sup>1</sup> and M Pangestu<sup>3</sup>

<sup>1</sup> Faculty of Animal Science, Jenderal Soedirman University, Purwokerto, Central Java, Indonesia

<sup>2</sup> Department of Animal Production, Faculty of Agriculture, Omdurman Islamic University, Pox 283, Sudan

<sup>3</sup> Education Program in production and Development, Dept. Obstetrics and Gynecology, Monash Clinical School, Monash University, Australia

## ORCID

<http://orcid.org/0000-0002-8475-7822>

## Abstract.

The present study aimed to investigate the association of the CAST genotype and growth traits in Batur sheep. Batur lambs were reared under an intensive feeding system. Bodyweight is measured monthly after weaning until six months of age. Blood representing thirty head were collected, genomic DNA was extracted as samples, and then 200 µl of whole blood samples were used. Specific primers were designed to amplify the CAST gene, samples were sequenced, then the researchers used the BioEdit program to identify any mutation. Calculation of genotypes, gene and allele frequencies, heterozygosities, and Chi-square test was performed. The analysis revealed a total of sixteen polymorphic sites in the CAST coding region. There are four alleles observed (A, G, C, and T), trans-versions at c.92T<G and c.285G>T loci, and transitions at c.214G>A, c.280G>A, c.301C<T, and c.371A>G. One individual disrupted the reading frame in the whole CAST sequenced. The genotype frequency analysis showed the highest predominance of the (TT, GG, CC, and AA) genotypes with frequencies (66.7 %, 62.9 %, 59.3 %, 66.7 %, and 55.6 %) as homozygous. In contrast, the heterozygous (TG, GA, GT, CT, and AG) genotypes were present at lower frequencies (29.6 %, 33.3 %, 37 %, 29.6 %, and 37 %), respectively with four difference alleles (T, G, C, and A). Post-weaning bodyweight till 6-month age of Batur sheep for the heterozygous genotypes at loci (c.92T<G, c.214G>A, c.280G>A, and c.301C<T) was slightly more massive than those carrying homozygous wild-type genotypes (c.285G>T and c.371A>G) with no significant differences ( $p > 0.5$ ). The lambs with the heterozygous genotype had a significantly higher muscle percentage as a whole, compared to the other genotypes. Polymorphic sites were present in Batur sheep for the first time about the association with the CAST gene. However, the CAST gene might not be a useful marker for developing future selection programs in Batur sheep unless further investigation of the CAST gene and its interactions with other genes involving muscle growth and carcass traits are analyzed through association studies at a large scale.

Corresponding Author: H I H Haren;  
email: haren@oiu.edu.sd

Published: 13 September 2022

Publishing services provided by  
Knowledge E

© H I H Haren et al. This article is distributed under the terms of the Creative Commons Attribution License, which permits unrestricted use and redistribution provided that the original author and source are credited.

Selection and Peer-review under the responsibility of the ICASI Conference Committee.

## OPEN ACCESS

**Keywords:** genetic variation, CAST gene, association, Batur sheep, growth traits

**How to cite this article:** H I H Haren\*, D Purwantini, M Y Sumaryadi, A Setyaningrum, A Susanto and M Pangestu, (2022), "Genetic Variation in the Calpastatin Gene and its Association with Growth Traits in Batur Sheep" in *3rd International Conference on Advance & Scientific Innovation ICASI* Page 420 – Life Sciences Chapter, KnE Life Sciences, pages 420–431. DOI:10.18502/kls.v0i0.11827

## 1. Introduction

CAST is encoding the Calpastatin gene, which is located on chromosome 5, a chromosome including one of the three genomic regions associated with fat deposition in sheep [1]. CAST gene contains 36 exons and 35 introns in sheep [2]. Exon 6 is the largest exon of the ovine CAST gene [3]. Calpastatin is the only currently known endogenous specific inhibitor of Calpains 1 and 2 that does not affect other proteases. Calpastatin is present in all cell compartments of various tissues [4]. The CAST gene inhibits Calpain by preventing the Calpain proteolytic activation, membrane binding, and the expression of catalytic activity [5]. Calpastatin is involved in various physiological processes in the body, such as the regulation of protein turnover, and growth (Goll et al., 2003[6], fusion [7], and myoblast migration [8]. The calpain-calpastatin system influences many important processes including muscle development and growth as well as post-mortem meat tenderization [9]. It was reported, that the acceleration of skeletal muscle growth is accompanied by a decrease in calpain activity, chiefly as a result of increased Calpastatin activity [10]. Some studies reported that significant correlations were noticed between the genetic variation within the sheep CAST gene and growth traits [3]; [11]; [12]; [13] and average daily weight gain [14]. So, the genetic difference of CAST gene between fat-tailed and thin tailed sheep breeds might be due to the effect of the CAST gene on fat deposition, displaying the linkage disequilibrium (LD) of this gene with quantitative trait loci (QTL) associated with fat deposition in chromosome 5 of sheep [1]. Some studies have been revealed the associations of the CAST polymorphism with carcass traits and meat quality in many livestock [15]; [16]; [17]; [18]; [19] and [19]. Recently, some of the SNPs in the CAST gene have been included as commercial genetic markers by some livestock industries [20]. It should be noted, that the existence of a similar association in sheep has been reported in only a few research papers to date [21]; [13]; [14]. Thus, the allegedly genetic variation in the CAST gene correlates with growth and potentially used as a candidate gene for growth and carcass traits in sheep. The purpose of this study is to investigate the CAST genotype and its association with growth traits in Batur sheep.

## 2. Materials and Methods

### 2.1. Animals and experimental design

Batur sheep are the predominant breed in the upland areas of Banjarnegara – Indonesia - where they are well adapted to the local cold and humid environment. This breed

developed by crossing between local breeds (Fat and Thin Tailed Sheep) and imported breed (Merino) [22]. Thirty heads of Batur sheep used for this experiment, the number of lambs born for every birth of each ewe was recorded, and the lambs' suckling program lasted for three months (90th day). Batur lambs were reared at the Batur area under an intensive feeding system until six months of age. All lambs were fed by concentrated feed consist of mixed feedstuff gave 3% of their body weight. Bodyweight measured monthly after weaning to six months of age.

## 2.2. DNA extraction

Blood samples (3 ml) were collected from each head of the experimental lambs' jugular vein and put into the vacutainer tubes containing EDTA (10 mL EDTA spray dried). For DNA extraction, 200 µl of whole blood samples were used and performed according to the manufacturer protocol (Genetika science). To amplify the 3rd exon region of the MSTN gene, then a specific primer is designed using the Primer3 software from the NCBI website in (Table 1). The concentration and purity of isolated DNA were measured using Nano-Drop 8000 Spectrophotometer (Thermo Scientific, Waltham, Massachusetts, USA) by Absorbance method.

TABLE 1: Primer forward and reverse for the CAST Amplification

Amplified fragment	Size (bp)	Primer name	Primer sequence	Tm (oC)
CAST	622	Forward:	5'-TGGGGCCCAATGACGCCATCGATG-3'	Palmer et al. (1998)
		Reverse:	5'-GGTGGAGCAGCACTTCTGATCACC-3'	

## 2.3. Polymerase chain reaction conditions

Each 25 µl PCR reaction contained 25 ng of genomic DNA, 12.5 µl 2x Reaction mix of each primer, and 1.0 units of Taq DNA polymerase as shown in table 2, the cycling protocol was 5 minutes at 95°C as an initial denaturation, 35 cycles of denaturing at 94°C for 45 seconds, annealing at 73.9 for 45 seconds, extending at 72°C for 40 s, with final extension for 10 minutes. A PCR reaction mixture for amplification of the CAST gene was contained of Kapa mix 12.5 µL, Forward primer 1.0 µL, Reverse primer 1.0 µL, DNA template 1.0 µL, dH2O µL, with a total volume of 25 µL.

All samples were sent to Malaysia for sequencing, and the BioEdit program was used to identify a nucleotide substitution or mutation, and sequenced results compared with CAST gene reference (accession number AF016006.1) coding regions. The chromosome

ovr5 of the CAST region was used to identify a candidate gene by the Ensembl database ([www.ensembl.org](http://www.ensembl.org)). A candidate gene was chosen based on their known function or potential involvement with growth and muscularity.

## 2.4. Data analysis

Genotypes and allele frequencies, heterozygosity rates were counted and a Chi-square test was performed. The mathematical model for gene and allele frequency [23] as follow:

$$\text{Genotype frequency} = Xi = \frac{Gi}{N} \times 100\%$$

$$\text{Allele frequency} = Xij = \frac{2nii + nij}{2N}$$

Where: Xi = Genotype or allele frequency, ith = homozygous alleles, jth = heterozygous alleles, Gi = number samples of i genotype, and N = total samples.

Statistical analysis using ANOVA procedure (software SPSS program version 17.0) was utilized to determine the correlation between CAST genotype and body weight and weaning weight.

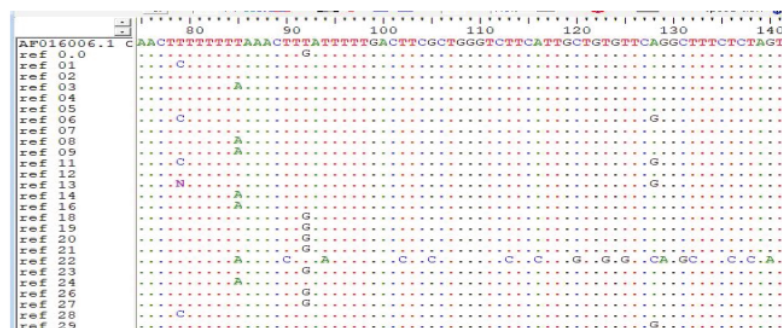
## 3. Results and Discussion

### 3.1. CAST genotyping

The first step in studying the candidacy loci procedure is the genotyping of the base flock for the target gene. Batur sheep population revealed variation for the CAST gene; this assumed that the quality and quantity of meat in this breed could be affected by the CAST genotype, which leads us to study. The analysis revealed a total of sixteen polymorphic sites in the CAST coding region (Figure 1). There are four alleles observed (A, G, C, and T) every two alleles resulting in three genotypes, as in table 2. Sixteen polymorphic sites were observed in the fifth exon of the Cast regions, transversions at c.92T→G and c.285G>T loci, transitions at c.214G>A, c.280G>A, c.301C→T, and c.371A>G. one individual disrupted the reading frame in the whole CAST sequenced.

### 3.2. Population analysis in the CAST

In an investigated population, the population's genetic equilibrium was evaluated using  $\chi^2$ -test, and the CAST loci had  $\chi^2$  value and probabilities presented in (table 3). Based on these results, the studied population showed a low degree of genotypic variability for



**Figure 1:** Chromatogram of BioEdit program used to identify if any nucleotide substitution in the CAST gene, all sequence plotted to a standard as a dot, compared to the reference sequence (NCBI accession number AF016006.1) there are 16 different variants on the matched sequence positions, one individual sequence disrupted reading frame in CAST gene..

the heterozygous CAST gene; thereby, the CAST gene of Batur sheep in Banjarnegara - Batur village was in Hardy-Weinberg equilibrium; thus, the null hypothesis is that the gametes unite at random.

A Large population in Hardy-Weinberg equilibrium is defined if the frequency of genotype ( $P^2$ ,  $2pq$ ,  $q^2$ ) and frequencies of allele ( $p$  and  $q$ ) are constant from generation to generation because mating occurs roughly at random in a large population [24]; [25]. Selection is one factor that can alter the balance in the population rapidly [25]. Hardy-Weinberg equilibrium can be affected by inbreeding, assortative mating, natural selection, and population subdivision [23]. Calculated heterozygosity at the CAST loci in this sheep breed was low due to the close breeding system, which caused an increase in  $\chi^2$  value.

TABLE 2: Number and genotype frequencies at exon 5 in the ovine CAST gene of Batur lambs.

No	Nucleotide change	position	Transition/transversion	Genotype		
1	T>G	c.92	Transversions	(18) TT	(08) TG	(00) GG
2	G>A	c.214	Transitions	(17) GG	(09) GA	(01) AA
3	G>A	c.280	Transitions	(17) GG	(09) GA	(00) AA
4	G>T	c.285	Transversions	(16) GG	(10) GT	(00) TT
5	C>T	c.301	Transitions	(18) CC	(08) CT	(01) TT
6	A>G	c.371	Transitions	(15) AA	(10) AG	(01) GG

In examined Batur lambs, the genotype frequency analysis showed the highest predominance of the “TT, GG, CC, and AA” genotypes with frequencies (66.7 %, 62.9 %, 59.3 %, 66.7 %, and 55.6 %) as homozygous while the heterozygous “TG, GA, GT, CT, and AG” genotypes were present at lower frequencies ((29.6 %, 33.3 %, 37 %, 29.6 %, and 37 %) respectively with four difference alleles (T, G, C, and A). It is known that the



using genetic marker depends on both the magnitude effect of a genotype frequency in the population. Several studies have reported the genetic variation in the bovine CAST gene, such as in coding regions [26], [27], and non-coding regions [10]; [28].

TABLE 3: Observed and expected genotypic and allele frequencies and  $\chi^2$  test for the CAST loci

Locus	Observed Genotype			Allele		$\chi^2$	p-value
c.92T>G	TT 0.667	TG 0.296	-	T 0.85	G 0.15		
c.214G>A	GG 0.629	GA 0.333	AA 0.037	G 0.80	A 0.20		
c.280G>A	GG 0.629	GA 0.333	-	G 0.83	A 0.17		
c.285G>T	TGG 0.593	GT 0.370	-	G 0.81	T 0.19		
c.301C>T	CC 0.667	CT 0.296	TT 0.037	C 0.81	T 0.19		
c.371A>G	AA 0.556	AG 0.370	GG 0.037	A 0.77	G 0.23		
	Expected Genotype			Expected Allele			
c.92T>G	TT 0.7	TG 0.3	GG 0.0	T 0.85	G 0.15	0.032	0.86
c.214G>A	GG 0.6	GA 0.3	AA 0.0	G 0.80	A 0.20	0.0008	0.98
c.280G>A	GG 0.7	GA 0.3	AA 0.0	G 0.83	A 0.17	0.042	0.84
c.285G>T	TGG 0.6	GT 0.3	TT 0.0	G 0.81	T 0.19	0.054	0.82
c.301C>T	CC 0.7	CT 0.3	TT 0.0	C 0.81	T 0.19	0.0003	0.99
c.371A>G	AA 0.6	AG 0.3	GG 0.1	A 0.77	G 0.23	0.007	0.94

According to [29] reported that in six (Thin-Tailed Sheep, Sukabumi, Jonggol, Kissar, Priangan, Margawati, and Fat-Tailed, Sumbawa, Donggala, and Rote) local sheep populations in Indonesia have CAST-1 and 2 alleles in the same frequency (48.4%) and spread throughout a population. Simultaneously, the CAST-3 was a rare allele and only found in the thin tailed sheep population (Sukabumi, Jonggol, and Kissar). Another study using PCR-RFLP reported the polymorphisms of Calpastatin (CAST-Msp1 locus) in local Indonesian sheep. With two types of alleles (M and N), but only found two types of genotypes (MN and NN) with the frequency of 25% and 75% for MN and NN genotypes, and 13% and 87% for M and N alleles [30]. Furthermore, this study has no exception.

### 3.3. Effect of CAST gene on growth traits

In the present study, exon 5 of the CAST gene is polymorphic. However, association analysis could be performed, and an attempt was made to verify the association of genotypic variants of the 5th exon with body weights at weaning and post-weaning gain (15, 30, 45, 60, 75, and 90 days) 6-months age,

the phenotypic and genotypic information. The descriptive statistic means  $\pm$  standard error of weaning weight, repeated body weight, and average daily gain of different

TABLE 4: Means and Std. Error of body weight gain (ADG), weaning, and post-weaning of each genotype.

Traits /SNPs	5 Body Weight (kg)			Average Daily Gain (g/d)		
	TT	TG	GG	TT	TG	GG
c.92T>G						
Weaning	19.9±1.0	20.9±1.7	00			
15-day	23.9±1.4	24.9±2.1	00	69	99	00
45-day	24.9±1.4	26.4±2.0	00	35	42	00
60-day	25.5±1.5	27.0±2.2	00	186	220	00
75-day	28.3±1.6	30.3±2.4	00	142	148	00
90-day	30.4±1.6	30.4±2.4	00	45	119	00
c.214G>A	GG	GA	AA	GG	GA	AA
Weaning	20.5±.93	21.2±2.5	00			
15-day	23.6±1.4	25.4±1.9	00	69	85	00
45-day	24.7±1.4	26.7±1.9	00	30	51	00
60-day	25.2±1.5	27.4±2.1	00	197	194	00
75-day	28.1±1.7	30.3±2.3	00	139	155	00
90-day	30.2±1.7	32.6±2.3	00	9	-25	00
c.280G>A	GG	GA	AA	GG	GA	AA
Weaning	19.8±1.0	22.7±2.3	00			
15-day	22.9±1.1	26.7±1.8	00	62	110	00
45-day	23.8±1.1	28.4±1.8	00	23	64	00
60-day	24.2±1.2	29.3±1.9	00	177	232	00
75-day	26.8±1.3	32.8±2.1	00	153	127	00
90-day	29.1±1.3	34.7±2.1	00	35	-74	00
c.285G>T	GG	GT	TT	GG	GT	TT
Weaning	21.6±0.9	19.3±2.3	00			
15-day	25.3±1.4	22.6±1.8	00	62	105	00
45-day	26.2±1.4	24.2±1.8	00	25	56	00
60-day	26.6±1.6	24.1±2.0	00	233	137	00
75-day	30.1±1.7	27±2.1	00	150	134	00
90-day	32.3±1.7	29±2.1	00	-26	34	00
c.301C>T	CC	CT	TT	CC	CT	TT
Weaning	21.1±1.3	19.9±1.9	26.1±0.0			
15-day	24.4±1.4	24.5±2.3	23.3±6.0	63	122	-67
45-day	25.3±1.4	26.1±2.3	23.2±6.1	33	60	-74
60-day	25.8±1.5	26.7±2.5	22.1±6.6	179	223	274
75-day	28.5±1.7	30.2±2.7	26.2±7.2	146	170	67
90-day	30.5±1.7	32.5±2.7	27.2±7.0	25	-75	107
c.371A>G	AA	AG	GG	AA	AG	GG
Weaning	21.2±1.4	19.9±1.7	00			
15-day	24.8±1.4	23.3±1.8	00	90.42	58	00
45-day	26.2±1.4	24.1±1.8	00	33	44	00
60-day	26.7±1.6	24.8±1.9	00	220	157	00
75-day	29.9±1.7	27.2±2.2	00	135	158	00
90-day	31.9±1.7	29.5±2.1	00	6	-17	00



genotypes of Batur sheep in Banjarnegara at each CAST genotype loci were summarized in table 3. The presented results showed that the variations in the CAST gene at six different loci had no significant effect ( $p > 0.05$ ) on all of the studied growth traits (weaning weight, post-weaning body weight, post-weaning, average daily gain, chest girth, height at withers, and body length).

Inconsistent with our results, many studies explained significant effect for the variations in the Calpastatin gene on weaning weight and body gain in Egyptian Barki lambs [31], opposite to research reported by [32]; however, Post-weaning bodyweight till 6-month age of Batur sheep for the heterozygous genotypes at loci (c.92T>G, c.214G>A, c.280G>A, and c.301C>T) slightly more massive than those carrying homozygous wild-type genotypes (c.285G>T and c.371A>G) with no significant differences ( $p > 0.5$ ). Similarly, [14] reported an association of CAST genotype variations with body weight in Kurdi sheep, but did not affect growth properties when weaning until the age of six months. The Calpastatin gene's diversity has no association with body dimensions in Indonesian Thin Tailed Sheep but significantly affects the average daily gain ADG [33].

Changing the quality or quantity of feed offered can affect growth rate, management factors, and diseases as diarrhea has disadvantages reduced overall lamb's body weight, thereby production. In addition to that, changes in management and nutrition produce only temporary improvements required to be repeated each season. By contrast for genetic improvement of a trait contributing to lamb meat production is permanent.

TABLE 5: Significance of multivariate test of the CAST for all growth traits.

Source		Sum of square	d.f	Mean Square	F	Sig.	Partial Eta Squared
All growth traits vs genotype	Sphericity Assumed	476.64	23	20.723	1.26	0.19	0.05
	Greenhouse-Geisser	476.64	2.85	167.099	1.26	0.29	0.05
	Huynh-Feldt	476.64	3.41	139.679	1.26	0.29	0.05
	Lower-bound	476.64	1.00	476.640	1.26	0.27	0.05
Error of All growth traits	Sphericity Assumed	9073.545	552	16.438			
	Greenhouse-Geisser	9073.545	68.5	132.540			
	Huynh-Feldt	9073.545	81.9	110.792			
	Lower-bound	9073.545	24.0	378.064			

TABLE 6: Significance of the multivariate test of the CAST for average daily gain.

Source		Sum of Squares	d.f	Mean square	F	Sig.	Partial Eta Squared
ADG vs genotype	Sphericity Assumed	5.997	5	1.199	0.39	0.85	0.017
	Greenhouse-Geisser	5.997	2.24	2.674	0.39	0.70	0.017
	Huynh-Feldt	5.997	2.71	2.210	0.39	0.74	0.017
	Lower-bound	5.997	1.00	5.997	0.39	0.54	0.017
	Upper-bound	5.997	5	1.199	0.39	0.85	0.017
Error of ADG	Sphericity Assumed	353.15	115	3.071			
	Greenhouse-Geisser	353.15	51.6	6.845			
	Huynh-Feldt	353.15	62.4	5.659			
	Lower-bound	353.15	23.0	15.354			
	Upper-bound	353.15	115	3.071			

ADG = average daily gain.

Bodyweight and growth traits are controlled by many genes (polygenic) and are greatly influenced by environmental factors [25]. The rate and degree of skeletal muscle growth are dependent on several factors, including the rate of muscle protein synthesis and degradation and the size and number of muscle cells. Calpain activities are required in the myoblast fusion process and the proliferation of cell growth [34]. Calpain system can also affect the number of fibers of the muscle cells in animals by affecting proliferation and modulating fusion myoblast. The system is also crucial in the normal growth of the skeletal muscles. The increase in the growth rate of skeletal muscle could be caused by a decrease in the rate of muscle protein degradation and it is associated with a decrease in the calpain system's activity. This occurs due to a large increase in Calpastatin activity [34].

#### 4. Conclusions

The present study investigated the CAST gene's allelic and genotypic effects on the growth traits in Batur sheep. Polymorphism is present in Batur sheep for the first time regarding assessing the association with the 5th exon of the CAST gene. The studied population was in Hardy-Weinberg equilibrium. There are four homozygous genotypes in the CAST "TT, GG, CC, and AA" with frequencies (66.7 %, 62.9 %, 59.3 %, 66.7 %, and 55.6 %) while the heterozygous "TG, GA, GT, CT, and AG" genotypes were shown the lower frequencies ((29.6 %, 33.3 %, 37 %, 29.6 %, and 37 %) respectively with four difference alleles (T, G, C, and A). Moreover, non-significance genotypic effects of the CAST gene in the studied growth traits. Present study supposed that the CAST gene's variation as selection tools to improve the growth traits in Batur sheep. However, the CAST gene might not be a useful marker for developing future

selection **programs** in Batur sheep unless further investigation <sup>3</sup> of the **CAST gene** and its interactions **performed with** other genes involving muscle growth and carcass traits through analyzing association studies on a large scale.

## 5. Acknowledgement

This study has been supported by Jenderal Soedirman University, Program (Riset Institusi Unsoed No. P/495/UN23/14/PN/2019), Purwokerto, Indonesia.

## References

- [1] Moradi MH, Nejati-Javaremi A, Moradi-Shahrabak M, Dodds KG, McEwan JC. Genomic scan of selective sweeps in thin and fat tail sheep breeds for identifying of candidate regions associated with fat deposition. *BMC Genet.* 2012;13(1):10.
- [2] Kemp CM, Sensky PL, Bardsley RG, Buttery PJ, Parr T. Tenderness—an enzymatic view. *Meat Sci.* 2010;84(2):248–56.
- [3] Zhou H, Hickford JG, Gong H. Polymorphism of the ovine calpastatin gene. *Mol Cell Probes.* 2007;21(3):242–4.
- [4] Wang KK, Yuen PW. Calpain inhibition: An overview of its therapeutic potential. *Trends Pharmacol Sci.* 1994;15(11):412–9.
- [5] Huff Lonergan E, Zhang W, Lonergan SM. Biochemistry of postmortem muscle - lessons on mechanisms of meat tenderization. *Meat Sci.* 2010;86(1):184–95.
- [6] Goll DE, Thompson VF, Li H, Wei W, Cong J. The calpain system. *Physiol Rev.* 2003 Jul;83(3):731–801.
- [7] Temm-Grove CJ, Wert D, Thompson VF, Allen RE, Goll DE. Microinjection of calpastatin inhibits fusion in myoblasts. *Exp Cell Res.* 1999;247(1):293–303.
- [8] Dedieu S, Mazères G, Poussard S, Brustis JJ, Cottin P. Myoblast migration is prevented by a calpain-dependent accumulation of MARCKS. *Biol Cell.* 2003;95(9):615–23.
- [9] Koohmaraie M, Geesink GH. Contribution of postmortem muscle biochemistry to the delivery of consistent meat quality with particular focus on the calpain system. *Meat Sci.* 2006;74(1):34–43.
- [10] Calvo JH, Iguácel LP, Kirinus JK, Serrano M, Ripoll G, Casasús I, et al. A new single nucleotide polymorphism in the calpastatin (CAST) gene associated with beef tenderness. *Meat Sci.* 2014;96(2):775–82.

- [11] Byun SO, Zhou H, Forrest RH, Frampton CM, Hickford JG. Association of the ovine calpastatin gene with birth weight and growth rate to weaning. *Anim Genet*. 2008;39(5):572–3.
- [12] Chung H, Davis M. Effects of genetic variants for the calpastatin gene on calpastatin activity and meat tenderness in Hanwoo (Korean cattle). *Meat Science*. 2012;90(3):711-714. <https://doi.org/10.1016/j.meatsci.2011.10.017>.
- [13] Greguła-Kania M, Gruszecki TM, Junkuszew A, Juszczyk-Kubiak E, Florek M. Association of CAST gene polymorphism with carcass value and meat quality in two synthetic lines of sheep. *Meat Sci*. 2019 Aug;154:69–74.
- [14] Nassiry MR, Tahmoorespour M, Javadmanesh A, Soltani M, Far SF. Calpastatin polymorphism and its association with daily gain in Kurdi sheep. *Iran J Biotechnol*. 2006;4:188–92.
- [15] Schenkel FS, Miller SP, Jiang Z, Mandell IB, Ye X, Li H, et al. Association of a single nucleotide polymorphism in the calpastatin gene with carcass and meat quality traits of beef cattle. *J Anim Sci*. 2006 Feb;84(2):291–9.
- [16] Curi RA, Chardulo LA, Mason MC, Arrigoni MD, Silveira AC, de Oliveira HN. Effect of single nucleotide polymorphisms of CAPN1 and CAST genes on meat traits in Nellore beef cattle (*Bos indicus*) and in their crosses with *Bos taurus*. *Anim Genet*. 2009 Aug;40(4):456–62.
- [17] Urbański P, Pierzchała M, Terman A, Kamyczek M, Różycki M, Roszczyk A, et al. The relationship between the polymorphism of the porcine CAST gene and productive traits in pigs. *Can J Anim Sci*. 2015;95(3):361–7.
- [18] Gandolfi IG, Zambonelli P, Braglia S, Speroni C, Zappavigna A, Russo V, et al. Polymorphisms and haplotypes of calpastatin gene are associated with performance and carcass traits in Italian large white pigs. *Livest Sci*. 2012;147(1-3):77–83.
- [19] Wang J, Elzo MA, Jia X, Chen S, Lai S. Calpastatin gene polymorphism is associated with rabbit meat quality traits. *J Appl Anim Res*. 2017;45(1):342–5.
- [20] Zhou YG, Xiong Y, Yang CW, Jiang XS, Ran JS, Jin J, et al. 2017. Experimental verification of CAPN1 and CAST gene polymorphisms in different generations of Da-Heng broilers. *BioMed Research International*. 2017. <https://doi.org/10.1155/2017/7968450>.
- [21] Johnston DJ, Graser HU. Estimated gene frequencies of GeneSTAR markers and their size of effects on meat tenderness, marbling, and feed efficiency in temperate and tropical beef cattle breeds across a range of production systems. *J Anim Sci*. 2010;88(6):1917–35.

- [22] Bickerstafe R, Hickford JG, Gately K, Zhou H. Association of polymorphic variations in calpastatin with meat tenderness and yield of retail meat cuts in lambs. Proceedings of international congress of meat science; 2008; Helsinki, Finland.
- [23] Prayitno. 2010. Analisis Genetik dan Kekerabatan Domba Batur dengan Domba Lokal dan Merino Menggunakan Marker RAP-DNA. Laporan Penelitian Hibah Doktor. Universitas Gadjah Mada, Yogyakarta.
- [24] Nei M, Kumar S. Molecular evaluation and phylogenetics. New York: Oxford Univ Press; 2000.
- [25] Vasconcellos LP, Talhari DT, Pereira AP, Coutinho LL, Regitano LC. Genetic characterization of Arberdeen Angus cattle using molecular markers. Genet Mol Biol. 2003;26(2):133–7.
- [26] Noor RR. (2008). Genetika Ternak. Ed. Ke-2. Jakarta: Penyebar Swadaya.
- [27] Enriquez-Valencia CE, Pereira GL, Malheiros JM, de Vasconcelos Silva JA, Albuquerque LG, de Oliveira HN, et al. Effect of the g.98535683A>G SNP in the CAST gene on meat traits of Nellore beef cattle (*Bos indicus*) and their crosses with *Bos taurus*. Meat Sci. 2017 Jan;123:64–6.
- [28] Dagong MI, Cece S, Ronny RN, Rachmat H, Mohamad Y. Genetic polymorphisms of the coding region (exon 6) of Calpastatin in Indonesian sheep. Media Peternakan. 2011;190-195. <https://doi.org/10.5398/medpet.2011.34.3.190>
- [29] Sumantri C, Diyono R, Farajallah A, Inounu I. Polymorphism of calpastatin gene and its effect on body weight of local sheep. JITV. 2008;13:117–26.
- [30] brahim AH, Ismail IM, Shehata MF, El-Beltagy AR. Calpastatin Polymorphism in Barki Lambs and their Effects on Growth and Carcass Traits. J Am Sci. 2015;11(3) . Available from: <http://www.jofamericanscience.org>
- [31] Armstrong E, Ciappesoni G, Iriarte W, Da Silva C, Macedo F, Navajas EA, et al. Novel genetic polymorphisms associated with carcass traits in grazing Texel sheep. Mesc. 2017. <https://doi.org/10.1016/j.meatsci.2018.06.014>.
- [32] Dagong, M. I. A, Cece Sumantri, Ronny Rachman Noor, Rachmat Herman, Mohamad Yamin. (2016). Growth characteristics of Indonesian Thin Tail Sheep (TTS) based on Calpastatin (CAST) gene genotype variation. Advances in Environmental Biology. 2016;10(11):27-31.
- [33] Kuryl J, Kapelanski W, Pierzchala M. Preliminary observations on the effect of calpastatin gene polymorphism in carcass trait in pigs. Anim Sci Pap Rep. 2003;2:87–95.

## ORIGINALITY REPORT

19%

SIMILARITY INDEX

12%

INTERNET SOURCES

15%

PUBLICATIONS

5%

STUDENT PAPERS

## PRIMARY SOURCES

1	Submitted to Universitas Negeri Semarang Student Paper	1%
2	jnp.fapet.unsoed.ac.id Internet Source	1%
3	Xin Guo, Terigele Li, Datong Lu, Takahisa Yamada, Xihe Li, Siqin Bao, Jiasen Liu, Gerelt Borjigin, Ming Cang, Bin Tong. "Effects of the Expressions and Variants of the CAST Gene on the Fatty Acid Composition of the Longissimus Thoracis Muscle of Grazing Sonid Sheep", Animals, 2023 Publication	1%
4	Submitted to University of Michigan-Shanghai Jiao Tong University Joint Institute Student Paper	1%
5	docplayer.net Internet Source	1%
6	coek.info Internet Source	1%



7	Shahram Nanekarani, Majid Goodarzi. "Polymorphism of Candidate Genes for Meat Production in Lori Sheep", IERI Procedia, 2014 Publication	1 %
8	Tatiana G. Sazontova, Alexey A. Matskevich, Yuriy V. Arkhipenko. "Calpains: physiological and pathophysiological significance", Pathophysiology, 1999 Publication	1 %
9	Yu A Kolosov, I F Gorlov, A Yu Kolosov, N V Shirokova et al. "Determination of CAST gene polymorphism in sheep of the Volgograd breed", IOP Conference Series: Earth and Environmental Science, 2021 Publication	1 %
10	<a href="http://www.ajol.info">www.ajol.info</a> Internet Source	1 %
11	<a href="http://www.tandfonline.com">www.tandfonline.com</a> Internet Source	1 %
12	<a href="http://www.coursehero.com">www.coursehero.com</a> Internet Source	<1 %
13	Darrel E. Goll, Valery F. Thompson, Richard G. Taylor, Ahmed Ouali. "The calpain system and skeletal muscle growth", Canadian Journal of Animal Science, 1998 Publication	<1 %

- |    |                                                                                                                                                                                                                                                                                                                      |      |
|----|----------------------------------------------------------------------------------------------------------------------------------------------------------------------------------------------------------------------------------------------------------------------------------------------------------------------|------|
| 14 | Desi Susanti, Maria Sugiat, Ernest Grace, Reni Shinta Dewi, Acai Sudirman. "Reflection on Purchase Decisions for Ulos Handicraft Products from the Marketing Mix Aspect", KnE Social Sciences, 2022<br>Publication                                                                                                   | <1 % |
| 15 | encyclopedia2.thefreedictionary.com<br>Internet Source                                                                                                                                                                                                                                                               | <1 % |
| 16 | ijbiotech.com<br>Internet Source                                                                                                                                                                                                                                                                                     | <1 % |
| 17 | journal.waocp.org<br>Internet Source                                                                                                                                                                                                                                                                                 | <1 % |
| 18 | bmcgenomics.biomedcentral.com<br>Internet Source                                                                                                                                                                                                                                                                     | <1 % |
| 19 | Hoyoung Chung, Michael Davis .. "PCR-RFLP of the Ovine Calpastatin Gene and its Association with Growth", Asian Journal of Animal and Veterinary Advances, 2012<br>Publication                                                                                                                                       | <1 % |
| 20 | Mohsen Aali, Hosein Moradi-Shahrababak, Mohammad Moradi-Shahrababak, Mostafa Sadeghi, Ali Reza Yousefi. "Association of the calpastatin genotypes, haplotypes, and SNPs with meat quality and fatty acid composition in two Iranian fat- and thin-tailed sheep breeds", Small Ruminant Research, 2017<br>Publication | <1 % |

21	Submitted to Universiti Sains Islam Malaysia Student Paper	<1 %
22	medical-dictionary.thefreedictionary.com Internet Source	<1 %
23	animalproduction.id Internet Source	<1 %
24	res.mdpi.com Internet Source	<1 %
25	www.ijscs.net Internet Source	<1 %
26	Asad Ali, Khalid Javed, Imran Zahoor, Khalid Mahmood Anjum, Numan Sharif. "Identification of polymorphisms in the MSTN and ADRB3 genes associated with growth and ultrasound carcass traits in Kajli sheep", Animal Biotechnology, 2021 Publication	<1 %
27	journals.uokerbala.edu.iq Internet Source	<1 %
28	"D810 week 27 research methods one way repeated measures anova WEB109133", Open University Publication	<1 %
29	Edward Steven, Jacky Chin, Reny Nadlifatin. "Implementation of Lead Time Improvement in the Cutting Production Process using	<1 %

# Clustering Data Mining and Lean Manufacturing", KnE Social Sciences, 2022

Publication

30

Edyta Juszcuk-Kubiak, Joanna Wszyńska-Koko, Krystyna Wicińska, Stanisław Rosochacki. "A novel polymorphisms in intron 12 of the bovine calpastatin gene", Molecular Biology Reports, 2007

Publication

<1 %

31

M I A Dagong, C Sumantri, R R Noor, R Herman, M Yamin. "Genetic Polymorphisms of the Coding Region (Exon 6) of Calpastatin in Indonesian Sheep", Media Peternakan, 2011

Publication

<1 %

32

Zhou, H.. "Polymorphism of the ovine calpastatin gene", Molecular and Cellular Probes, 200706

Publication

<1 %

33

[dergipark.org.tr](http://dergipark.org.tr)

Internet Source

<1 %

34

[digital.library.adelaide.edu.au](http://digital.library.adelaide.edu.au)

Internet Source

<1 %

35

[publications.waset.org](http://publications.waset.org)

Internet Source

<1 %

36

[www.acarindex.com](http://www.acarindex.com)

Internet Source

<1 %

37	Eranio Ramadansa Berlian, Endang Sri Redjeki, Dian Mawarni. "Patient Perspectives on Quality of Health Services in Mulyorejo Public Health Centre", KnE Life Sciences, 2021 Publication	<1 %
38	Reza Talebi, Mohammad Reza Ghaffari, Mehrshad Zeinalabedini, Ramin Abdoli, Mohsen Mardi. "Genetic basis of muscle - related traits in sheep: A review", Animal Genetics, 2022 Publication	<1 %
39	Yu-Guang Zhou, Yong Xiong, Chao-Wu Yang, Xiao-Song Jiang et al. " Experimental Verification of and Gene Polymorphisms in Different Generations of Da-Heng Broilers ", BioMed Research International, 2017 Publication	<1 %
40	<a href="https://api.crossref.org">api.crossref.org</a> Internet Source	<1 %
41	<a href="mailto:mail.qaemiau.ac.ir">mail.qaemiau.ac.ir</a> Internet Source	<1 %
42	Submitted to Higher Education Commission Pakistan Student Paper	<1 %
43	<a href="https://bioone.org">bioone.org</a> Internet Source	<1 %

44	fapet.ipb.ac.id Internet Source	<1 %
45	researcherslinks.com Internet Source	<1 %
46	sciendo.com Internet Source	<1 %
47	search.trdizin.gov.tr Internet Source	<1 %
48	vetdergi.kafkas.edu.tr Internet Source	<1 %
49	www.researchsquare.com Internet Source	<1 %
50	www.slideshare.net Internet Source	<1 %
51	Abdullah Hameed Salim, Ali Ahmed Abdulkareem. "CAST/Mspl gene polymorphism and its impact on growth performance and carcass traits of Shami goats breed in Iraq", Journal of Physics: Conference Series, 2019 Publication	<1 %
52	Alessandro Lima Machado, Ariana Nascimento Meira, Evandro Neves Muniz, Hymerson Costa Azevedo et al. "Single Loci and Haplotypes in CAPN1 and CAST Genes	<1 %



# are Associated with Growth, Biometrics, and in Vivo Carcass Traits in Santa Inês Sheep", Annals of Animal Science, 2020

Publication

---

---

Exclude quotes      On

Exclude matches      Off

Exclude bibliography      On