

# Composition and diversity of macroalgae community in the coast of Karang Bolong, Nusakambangan Island

*by Hernayanti Hernayanti*

---

**Submission date:** 05-Nov-2021 01:03PM (UTC+0700)

**Submission ID:** 1693679786

**File name:** dyartini\_2021\_IOP\_Conf.\_Ser.\_Earth\_Environ.\_Sci.\_746\_012025.pdf (6.17M)

**Word count:** 3562

**Character count:** 19507

4  
**Composition and diversity of macroalgae community in the coast of Karang Bolong, Nusakambangan Island**

**Dwi Sunu Widyartini\*, Hernayanti, and Romanus Edy Prabowo**

Faculty of Biology, Jenderal Soedirman University, Jalan dr. Soeparno 63 Grendeng Purwokerto 53122, Indonesia.

\*Email: dwi.widyartini@unsoed.ac.id

**Abstract.** Karang Bolong Beach is a beach located at the eastern tip of the island of Nusakambangan Cilacap. Karang Bolong Beach has a substrate type in the coral and composite substrate (fragment coral, rock, and sand). Therefore, a lot of seaweed grows there. This research aims to determine the macroalgae community on different substrates at Karang Bolong Beach, Cilacap. This is done to explore and use seaweed as a source of bioethanol. The research method used was a survey method - sampling using transects with a random process. The research variables included the macroalgae community in terms of species diversity and abundance on different substrates. The main parameters observed were the number of species and the number of individuals for each species. Supporting parameters consist of current velocity, nitrate content, turbidity, depth, tides, salinity, temperature, and pH. The data obtained were analyzed using Primer-7 to determine the diversity and density of each macroalgae species. The results showed 11 species of macroalgae consisting of *Amnasia glomerata*, *Caulerpa mexicana*, *Chaetomorpha crasa*, *Dictyota ciliolata*, *Eucheuma serna*, *Gracilaria arcuata*, *Gracilaria gigas*, *Laurencia subopposita*, *Padina australis*, *Rhodomenia* sp., and *Ulva rigida*. On the coral substrate, there were eight species, and on the composite substrate, six species. Four of these species are found in both substrate types. The diversity of species on the coral substrate varies from low to moderate. The highest abundance on composite substrates dominated by *Padina australis* biomass with a weight of 431 g.m<sup>-2</sup>. On coral substrate dominated by *Gracilaria gigas* with a value of 275.33 g.m<sup>-2</sup>. The community is in an unstable condition due to ecological pressures.

## 1. Introduction

Community structure is a collection of populations living in a particular area and is broadly organized with specific characteristics and functions as a metabolic transformation unit. Community studies can be carried out functionally and structurally. Functionally, looking at an organism's role and position in the food chain and food pyramid can be seen. Structurally, a community can be defined by species diversity, abundance, distribution, and dominance [1].

The diversity of macroalgae [13] divided into three main divisions based on the dominant pigment content in the macroalgae, namely Rhodophyta (red algae), Phaeophyta (brown algae), and Chlorophyta (green algae) [2][3]. Factors that influence species diversity in seaweed communities in nature are [15] anographic, topographical, and biological factors. Oceanographic conditions temperature, light intensity, depth, salinity, pH, currents, and waves. Topographical factors include bottom substrate conditions, a [2] biological factors include herbivores and competition between macroalgae species themselves [1].



Content from this work may be used under the terms of the Creative Commons Attribution 3.0 licence. Any further distribution of this work must maintain attribution to the author(s) and the title of the work, journal citation and DOI.

Published under licence by IOP Publishing Ltd

There are two main substrate types used as a habitat for macroalgae, namely soft substrate, which includes mud, sand, or a mixture of sand and dirt, and rigid substrate, which consists of dead coral, live coral, and rock. According to [4] [2], soft substrate waters are inhabited by *Halimeda*, *Caulerpa*, *Gracilaria*, and *Hypnea*. In waters with a rigid substrate are settled many species of *Enteromorpha*, *Ulva*, *Sargassum*, and *Turbinaria*.

Karang Bolong Beach is a beach on the eastern tip of the island of Nusakambangan Cilacap. Karang Bolong Beach has the primary type of substrate in corals and composite, many overgrown with macroalgae. Various coastal substrates have the potential to take the wealth of the macroalgae. Based on the coastal substrate, the Nusakambangan area has a reasonably large species diversity. The raw data of the number of macroalgae and biomass species is needed in various substrates in these waters. The variety, dominance, evenness, and similarity index can be studied.

Information about species diversity and density of a resource and environmental conditions is necessary information indispensable in aquaculture application, considering that marine resources' life and growth have different living conditions [5]. Changes in the coastline are due to natural factors, such as wind, waves, and currents, which are also factors that trigger changes in habitat, especially in coastal areas. This condition is also exacerbated by the speed of development in coastal areas, such as sand mining, jetty construction, tourism, and transportation, causing the ecosystem to function. The coastal regions to decline and the carrying capacity for marine resources' existence and potential is also increasingly depressed.

This study aims to determine the diversity and distribution patterns of macroalgae on the coast of Karang Bolong to explore sustainable bioethanol resources' potency. According to [6], macroalgae have broader industrial applications from conventional food, feed, and hydrocolloid to recently explored polysaccharide sources as potential renewable biomass for bioethanol production on top of terrestrial resources. The potential of macroalgae as a renewable raw material for bioethanol production depends on the biomass macroalgae and the growing environment.

## 2. Method

This study used a survey method. Samples were taken by a random line transect method. Research variables include species diversity and distribution patterns of macroalgae. The main parameters observed were the number of species and the number of individuals of each species. Supporting parameters consisted of current velocity, nitrate content, brightness, depth, tides, salinity, temperature, and pH.

The materials used in this study were macroalgae obtained from Karang Bolong Beach. The tools in this research including identification book, GPS, thermometer, depth sounder, pH meter, litmus paper, hand refractometer, Secchi disk, sample bottles, stopwatch, Erlenmeyer flask, measuring pipette, reduction column, Dual-beam UV-vis spectrophotometer, 0.45 filter paper, camera, and cool box.

Macroalgae samples were identified by observing the type of branching, the shape and size of the thallus, and the holdfast shape; then, they were determined by matching with the morphological and the descriptions in the identification book [3][7][8][9][10] and Algaebase. The data obtained were analyzed using the Shannon-Wiener diversity index ( $H'$ ) and the Simpson dominance index ( $D$ ). The Shannon-Wiener diversity index uses the following formula ([11][12]).

$$H' = - \sum_{i=1}^s p_i \ln p_i$$

$$p_i = \frac{n_i}{N}$$

where  $H'$  = Shannon-Wiener diversity index,  $p_i$  = proportion of the  $i^{\text{th}}$  species in the total sample,  $n_i$  = The number of individuals in plot  $i$ ,  $N$  = The total number of individuals of all species.

The dominance of each substrate using the Simpson dominance index formula [1] and [13] is as follows:

$$D = \sum \left( \frac{n_i}{N} \right)^2$$

where  $D$  = dominance index,  $n_i$  = the amount of biomass per species, and  $N$  = total biomass value.

The values of the Shannon-Wiener diversity index ( $H'$ ) and the Simpson dominance index ( $D$ ) were compared between substrates and interpreted according to [14]; [15]; [16], if the value of  $H' < 1$  diversity is low,  $1 < H' < 3$  is moderate diversity, and  $H' > 3$  high diversity. Dominance 0 means nothing is dominant, and one means some species dominate other species, or the community is in an unstable condition due to ecological pressure.

### 3. Results and discussion

The diversity of macroalgae species that grow on composited and corals substrate at Karang Bolong Beach Nusakambangan Cilacap were 11 species, namely *Amnesia glomerata*, *Caulerpa Mexicana*, *Chaetomorpha crasa*, and *Dictyota ciliolata*, *Eucheuma Serna*, *Gracilaria arcuata*, *Gracilaria gigas*, *Laurencia subopposita*, *Padina australis*, *Rhodomenia palmata*, and *Ulva rigida* (Figure 1).

The number of macroalgae found on the coral substrate was ten species and 5 species in the composited substrate. However, four species found in coral and composite were: *Padina australis*, *Gracilaria gigas*, *Chaetomorpha crasa*, and *Ulva rigida*. The diversity of species on coral and composited substrates is low to moderate. The community structure is in an unstable condition due to ecological pressures. The highest abundance in the composite substrate was dominated by *Padina australis* biomass with a weight of 431 g.m<sup>-2</sup>. The lowest was from *Ulva rigida*, with a value of 1.63 g.m<sup>-2</sup>. The coral substrate was dominated by *Gracilaria Gigas* biomass with a weight of 275.33 g.m<sup>-2</sup> and the lowest was biomass from *Rhodomenia palmata* weighing 0.67 g.m<sup>-2</sup>.

The number of seaweed species obtained on the coral substrate was higher than in the composited substrate. The coral substrate was more stable so that the seaweed could be firmly attached to the substrate and was not easily knocked over during big waves. [17] and [13] stated that a stable substrate condition was the right place for seaweed growth. The process of absorption of nutrients is better with large wave water movements. Seaweed is also clean from dirt so that it can grow better [12].

The proportion of living species dominating the composited substrate was *Padina australis*, reaching 91%, and the coral substrate *Gracilaria gigas* reaching 72%. The proportion of each species that dominate the composited substrate (with a value of less or equal to 5%) was *Gracilaria gigas*, *Chaetomorpha crasa*, *Laurencia subopposita*, and *Ulva rigida*. The proportion of each species that dominate the coral substrate (with a value of less than or equal to 11%) were *Gracilaria arcuata*, *Caulerpa Mexicana*, *Eucheuma Serna*, *Padina australis*, *Dictyota ciliolata*, *Chaetomorpha crasa*, *Amnesia glomerata*, *Ulva rigida*, and *Rhodomenia palmata* (Figure 2). A stable substrate is the right place for seaweed growth [12]. The composited substrate consists of coral and coral fragments composited with sand so that it was less stable. It resulted in easily knocked over by a big wave. Macroalgae were not found on the sand substrate because waves or currents quickly carried it away. This condition also due to the holdfast might not be strong enough to stick on and the thallus. [13] stated that water currents and the marine organisms easily carried away the sand substrate to become in an irregular pattern.

Macroalgae can be found in somewhat sheltered areas in the littoral and sublittoral zones. The measurement of the waters' physicochemical factors in the deeper part of water showed that the Karang Bolong Beach waters' condition was quite suitable for macroalgae growth. This was supported by [1] and [18]'s research that macroalgae could be found in somewhat protected areas in the littoral and sublittoral zones. Macroalgae species grew on rigid substrates consisting of rocks and corals to be firmly attached to the substrate. [13] stated that a stable substrate condition was the right place for macroalgae growth. The composited substrate consists of coral or coral fragments composited with sand, which was less stable so that it was easily knocked over during big and strong waves. In the soft substrate in the form of sand, no macroalgae species was found because sand was a substrate that was quickly washed away by waves or currents.

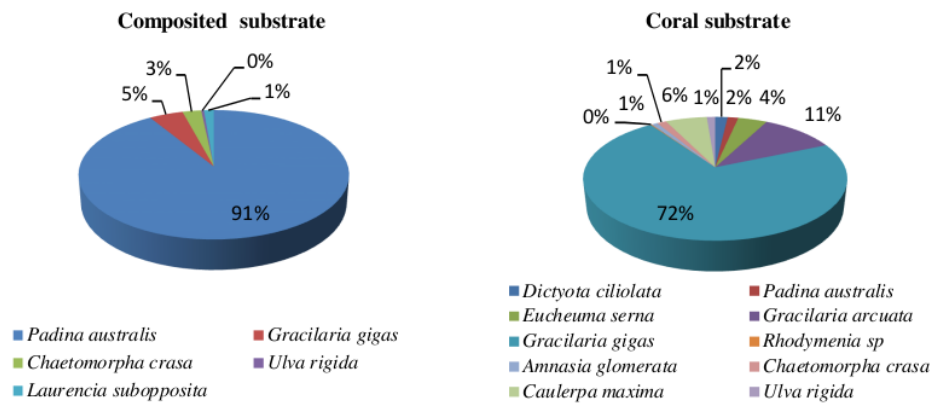




**Figure 1.** A voucher specimen of macroalgae found in Karang Bolong Beach, Nusakambangan Cilacap

The Shannon-Wiener diversity index ( $H'$ ) of macroalgae in Karang Bolong Beach ( $H'$ ) in the composited was 0.2092–0.5660 while the  $H'$  value in the coral substrate was 0.6426–1.4480, which meant low to moderate diversity (Table 1). Interpretation according to [14] and [16], if the value of  $H' < 1$  diversity is low,  $1 < H' < 3$  is medium diversity, and  $H' > 3$  is high diversity. According to [5] the variety of macroalgae species was influenced by the type of substrate, stability, surface hardness, and porosity of the bottom substrate.

The low level of diversity in the composite substrate was less stable, so waves easily carried away macroalgae. Macroalgae are vulnerable to changes or ecological stresses that affect their growth. Diversity in the coral substrate was higher than the composite substrate. Macroalgae are growing in a stable substrate, and their holdfast was stronger gripping the substrate. Poor water conditions indicate low diversity [19][17].



**Figure 2.** Macroalgae species composition in Karang Bolong Beach, Nusakambangan Cilacap

The dominance index ranged from 0.1639–1.0630, which means that other species dominated than the other species. The high dominance index indicated that there was a very tight competition among members of the community. The community was in unstable condition due to ecological pressures. Organisms that live in nature have minimum and maximum ecological limits for survival; There were three things in competition between species: competition in gaining space for interference competition, epiphytic, and allelopathy exploitation [11]. A population can survive if it is within the limits of the tolerance range for specific conditions of abiotic factors and resource availability. The waters' physicochemical parameters measured were quite right to support macroalgae growth (Table 2).

**Table 1.** Dominance index, diversity index, and criteria for the value of macroalgae species diversity obtained at Karang Bolong Beach using Primer-7

Substrate	Dominance index	Diversity index	Diversity value criteria
Composite 1	0.1687	0.5660	Low
Composite 2	0.6067	0.2865	Low
Composite 3	0.1639	0.2092	Low
Coral 1	0.8471	1.4480	Moderate
Coral 2	0.5684	0.7687	Low
Coral 3	1.0630	0.6422	Low

**Table 2.** Observations of average the physicochemical properties of the water at Karang Bolong Beach

Substrate	Temperature (°C)	Salinity (‰)	pH	Depth (cm)
Composite 1	30	25	6	80
Composite 2	30	25	6	90
Composite 3	31	24	6	70
Coral 1	30	27	6	75
Coral 2	31	27	6	70
Coral 3	30	26	6	80

The waters' physicochemical parameters' measurement showed that the Karang Beach conditions, Nusakambangan Cilacap were quite reasonable according to the reference in supporting macroalgae growth, except for the depth parameters, which are classified as relatively low because the sampling is carried out during the lowest tide. Macroalgae can live well in the optimal temperature range of 26–33°C [17]. Water temperature plays an essential role in helping the metabolic processes and photosynthesis of macroalgae. Right salinity for macroalgae growth ranged from 28–35‰ so that the process of nutrient absorption by diffusion run well [20][21]. The degree of acidity (pH) was a chemical, environmental factor determining whether growth was good or bad. [20] stated that a fair and optimal pH for macroalgae growth ranged from 6.8 to 8.2.

The depth measurement ranged from 70–90cm, which relatively low because the sampling was done during the lowest tide [22]; the optimum water depth conditions for macroalgae ranged from 60–120 cm. Tidal parameters measured using the WXTide32 software ranged from 0.1–2.1 m with a wave height range of 1.9 m. This condition was optimal for macroalgae growth. According to [19], the optimal tides for macroalgae growth were 1–3 m.

The measurement of this current velocity obtained 0.5–0.8 m.s<sup>-1</sup>, which was classified as vital, so it requires strong holdfast to stick to the substrate. Macroalgae that attach to the coral substrate and composite can withstand high current and strong waves [15] and [23], the optimum flow velocity for macroalgae growth ranged from 0.2–0.3 m.s<sup>-1</sup>. Water transparency ranged from 10.2–23 cm. This condition would support the level of sunlight reflection to get optimum light intensity. This optimum light will facilitate nutrient elements to be absorbed by macroalgae.

Nitrate measurement results ranged from 0.205–0.537 ppm, while phosphate measurements ranged from 10,745–20,061 ppm. Nitrate in natural waters is the primary nutrient source for macroalgae [24]. The optimal range for macroalgae growth was 0.9–3.5 ppm [25]. Nitrate levels exceeding five ppm indicate the pollution caused by human and animal activities [26][27].

#### 4. Conclusion

There were 11 species of macroalgae found in the coastal waters of Karang Bolong Nusakambangan Cilacap, namely *Amnesia glomerata*, *Caulerpa Mexicana*, *Chaetomorpha crasa*, *Dictyota ciliolata*, *Eucheuma Serna*, *Gracilaria arcuata*, *Gracilaria gigas*, *Laurencia subopposita*, *Padina australis*, *Rhodomenia palmata*, and *Ulva rigida*. The highest abundance in the composited substrate was dominated by *Padina australis* biomass with a weight of 431 g.m<sup>-2</sup> and on coral substrate dominated by *Gracilaria gigas* of 275.33 g.m<sup>-2</sup>. The species diversity index was low to moderate, and some species were dominating the others. The community was in an unstable condition due to ecological pressures.

#### Acknowledgments

Thanks to BLU Unsoed as a holder of Unsoed Development Research with Decree No: 117/UN23.18/PT01.05/2020.

#### References

- [1] Melsasail K, Awan A, Papilaya P M and Rumahlatu D 2018 The ecological structure of macroalgae community (Seagrass) on various zones in the coastal waters of Nusalaut Island, Central Maluku District, Indonesia *AACL Bioflux* **11** 957–66
- [2] Eurico C. Oliveira Katrin Österlund Matern S. P. Mtolera. 2020 Marine Plants of Tanzania A field guide to the seaweeds and seagrasses of Tanzania *Asian Foods* 1–287
- [3] Lee R 2018 *Phycology* (United Kingdom: Cambridge University Press)
- [4] Subagio and Kasim, Muh. Sofii Hamdan 2019 Identifikasi Rumput Laut (Seaweed) di Perairan Pantai Cemara, Jerowaru Lombok Timur Sebagai Bahan Informasi Keanekaragaman Hayati Bagi Masyarakat Subagio *JISIP* **3** 308–21
- [5] Ain N, Ruswahyuni - and Widyorini N 2014 Hubungan Kerapatan Rumput Laut Dengan Substrat Dasar Berbeda Di Perairan Pantai Bandengan, Jepara *Manag. Aquat. Resour. J.* **3**

- 99–107
- [6] Trivedi N, Vishal G, Reddy C R K and Jha B 2015 Marine Macroalgal Biomass as a Renewable Source of Bioethanol *chapter 11 June* 197–219
  - [7] Geraldino P J L, Yang E-C and Bu S-M 2006 Morphology and Molecular Phylogeny of *Hypnea flexicaulis*(Gigartinales, Rhodophyta) from Korea *Algae* **21** 417–23
  - [8] Ni-Ni-Win N, Sun Z M, Hanyuda T, Kurihara A, Millar A J K, Gurgel C F D and Kawai H 2013 Four newly recorded species of the calcified marine brown macroalgal genus *Padina* (Dictyotales, Phaeophyceae) for Australia *Aust. Syst. Bot.* **26** 448–65
  - [9] Noiraksa T, Ajisaka T and Kaewsuralikhit C 2006 Species of *Sargassum* in the East Coast of the Gulf of Thailand *ScienceAsia* **32** 99–106
  - [10] Ramesh C, Koushik S, Shunmugaraj T and Murthy M V R 2019 Bioinvasive Seaweed Genus, *Turbinaria* in Coral Reefs of Gulf of Mannar *J. Life Sci. Res.* **6** 1–4
  - [11] Renfro B and Chadwick N E 2017 Benthic community structure on coral reefs exposed to intensive recreational snorkeling *PLoS One* **12** 1–22
  - [12] Josephine M, Usha R and Maria Rani V 2013 Current status of seaweed diversity and their seasonal availability at Hare Island , Gulf of Mannar *Sci. Res. Reporter*, **3** 146–51
  - [13] Ferawati E, Widyartini D S and Insan I 2014 Studi Komunitas Rumput Laut Pada Berbagai Substrat Di Perairan Pantai Permisian Kabupaten Cilacap *Scr. Biol.* **1** 57
  - [14] Krebs C 2001 *Ecology: the experimental analysis of distribution and abundance* ed 4 (New York: Harper and Row)
  - [15] Hayes J J and Castillo O 2017 A new approach for interpreting the Morisita Index of aggregation through quadrat size *ISPRS Int. J. Geo-Information* **6**
  - [16] Weinstein M P, Litvin S Y and Krebs J M 2013 Restoration ecology: Ecological fidelity, restoration metrics, and a systems perspective *Ecol. Eng. J. homepage www.elsevier.com/locate/ecoleng*. 1–17
  - [17] Ammar M S A 2011 Coral diversity indices along the Gulf of Aqaba and Ras Mohammed, Red Sea, Egypt *Biodiversitas J. Biol. Divers.* **12** 92–8
  - [18] Ray Chaudhury N, Sanghvi D and Jain B 2019 Macroalgae Species as Zonal Indicators of Coral Reef: A Case Study from Bet Shankhodhar Reef, India *Wetl. Manag. - Assess. Risk Sustain. Solut.*
  - [19] Dutertre M, Grall J, Ehrhold A and Hamon D 2015 Environmental factors affecting maerl bed structure in Brittany (France) *Eur. J. Phycol.*
  - [20] Raven J A and Hurd C L 2012 Ecophysiology of photosynthesis in macroalgae *Photosynth. Res.* **113** 105–25
  - [21] Young C S and Gobler C J 2016 Ocean acidification accelerates the growth of two bloom-forming macroalgae *PLoS One* **11** 1–21
  - [22] Hanelt D, Wiencke C and Bischof K 2003 Photosynthesis in Marine Macroalgae 413–35
  - [23] Boller M L and Carrington E 2006 The hydrodynamic effects of shape and size change during reconfiguration of a flexible macroalga *J. Exp. Biol.* **209** 1894–903
  - [24] Roleda M Y and Hurd C L 2019 Seaweed nutrient physiology: application of concepts to aquaculture and bioremediation *Phycologia* **58** 552–62
  - [25] Handayani T 2019 Macroalgae on the Rocky Shore of the Southern Coast of Garut, West Java, Indonesia *IOP Conf. Ser. Earth Environ. Sci.* **278**
  - [26] Umanzor S, Ladah L and Zertuche-González J A 2017 The influence of species, density, and diversity of macroalgal aggregations on microphytobenthic settlement *J. Phycol.* **53** 1060–71
  - [27] Duran A, Collado-Vides L, Palma L and Burkepile D E 2018 Interactive effects of herbivory and substrate orientation on algal community dynamics on a coral reef *Mar. Biol.* **165** 1–9



# Composition and diversity of macroalgae community in the coast of Karang Bolong, Nusakambangan Island

## ORIGINALITY REPORT

11%	8%	10%	%
SIMILARITY INDEX	INTERNET SOURCES	PUBLICATIONS	STUDENT PAPERS

## PRIMARY SOURCES

1	Yovita Puri Subardjo, Gumintang Ratna Ramadhan, Dika Betaditya, Muflihatus Syarifah, Nurafifah Fauziana Abidin. "Nutritional information access and dietary behavior among people with diabetes during Covid-19 pandemic", IOP Conference Series: Earth and Environmental Science, 2021 Publication	2%
2	iopscience.iop.org Internet Source	2%
3	"Marine Macroalgal Biomass as a Renewable Source of Bioethanol", Marine Bioenergy, 2015. Publication	1%
4	www.e-algae.org Internet Source	1%
5	text-id.123dok.com Internet Source	1%

6

Desrita, I S Tamba, A Muhtadi, J Ariyanti, R Leidonald. " Diversity and habitat condition of Tor Fish ( spp.) in the upstream of Wampu Waters, North Sumatra, Indonesia ", IOP Conference Series: Earth and Environmental Science, 2019

Publication

1 %

7

Rima Nabilah Haifa, Zahidah Hasan, Heti Herawati, Isnur Nurruhwati, Asep Sahidin. "Spatial Distribution of Phytoplankton in Jatigede Reservoir, West Java, Indonesia", Asian Journal of Fisheries and Aquatic Research, 2020

Publication

1 %

8

Vivy Melati, Luthfiana Aprilianita Sari, Yudi Cahyoko, Sulastri Arsad, Kustiawan Pursetyo, Nina Dewi, Mohd. Idris. "Gastropod Community Structure as Environmental Change Signals for Tropical Status In Sedati Waters, Indonesia", Ecological Engineering & Environmental Technology, 2021

Publication

<1 %

9

[lipi.go.id](http://lipi.go.id)  
Internet Source

<1 %

10

[www.mdpi.com](http://www.mdpi.com)  
Internet Source

<1 %

11

[www.tandfonline.com](http://www.tandfonline.com)  
Internet Source

<1 %

12

I E Susetya, P Fadillah, R Leidonald, A Fadhilah. "Relationship between substrate characteristics and abundance of Polychaeta in Tanjung Tiram Waters, Batubara Regency, Sumatera Utara Province", IOP Conference Series: Earth and Environmental Science, 2020

Publication

<1 %

13

[ojs.ikipmataram.ac.id](https://ojs.ikipmataram.ac.id)

Internet Source

<1 %

14

[www.worldscientificnews.com](http://www.worldscientificnews.com)

Internet Source

<1 %

15

A F Dewinta, I E Susetya, M Suriani. "Nutritional profile of from Pane Island, Tapanuli Tengah as a component of functional food ", Journal of Physics: Conference Series, 2020

Publication

<1 %

Exclude quotes On

Exclude matches Off

Exclude bibliography On