

# Endophytic bacteria: an emerging tools for biological control bacterial leaf blight of paddy

*by* Nur Prihatiningsih

---

**Submission date:** 18-Nov-2020 11:37AM (UTC+0700)

**Submission ID:** 1449710042

**File name:** 1270\_Nur\_Prihatiningsih-AGT.docx (3.04M)

**Word count:** 3044

**Character count:** 16576

# Endophytic bacteria: an emerging tools for biological control bacterial leaf blight of paddy

N Prihatiningsih<sup>1</sup>, HA Djatmiko<sup>1</sup>, P Lestari<sup>2</sup>

<sup>1</sup>Agricultural Faculty, <sup>2</sup>Mathematics and Science Faculty University of Jenderal Soedirman. Jl dr Suparno Purwokerto, Central Java 53123, Indonesia

e-mail: nur.prihatiningsih@unsoed.ac.id

**Abstract.** Endophytic bacteria were isolated from the root of paddy, not negative influence even could serve as plant growth promoter and pathogen biocontrol likely *Xanthomonas oryzae* pv. *oryzae* caused of bacterial leaf blight. The research was aimed to know the effectivity of controlling the endophytic bacteria against bacterial leaf blight of paddy. Methods of this research were suppressing effect to control bacterial leaf blight with seed dipping and soaking the endophytic bacterial suspension on surrounding plant in the polibag. Nine bacterial and one control were treatment in this assay and three replicates, arranged with randomize completely block design. Endophytic bacteria isolated from roots of paddy were evaluated for their capacity to suppress bacterial leaf blight intensity, infection rate and the effectivity control. The result showed that the endophytic bacteria could suppress the disease, and the isolate of SB1 (from Sumbang 1) is the best for antagonistic effect by 64,16% and 49,14% effectivity at screen house and paddy fields respectively. Infection rate of this disease was slow by 0.024 unit.day<sup>-1</sup> and different with the control was 0.088 unit.day<sup>-1</sup>.

**Keywords:** Biological control, bacterial leaf blight, endophytic bacteria, paddy

## 1. Introduction

Sustainable management system of agriculture are key tools to maintain yield over the years, in such systems plants might be protected from diseases or other adversities with environmentally friendly tools that have low impact on the production and also on the environment. As a consequence, the interest for biological control of plant pathogens is increasing and strategies of biological control have been proposed and developed [1, 2] as well as biopesticide formulations containing endophytic bacteria [3]. In addition, varieties with resistance against diseases [4] and efficient agronomic management were also adopted to control pathogens. In this scenario, biocontrol emerges not only as a reliable alternative to chemical pesticides but it also may provide control of diseases that cannot be managed by other strategies, such as in the case of phytopathogenic bacteria [5] and endophytic bacteria, providing opportunities for a rationale and safe crop management.

Protection of plants from pathogens can be achieved either through an antagonistic interaction or by activating mechanisms such as the induced systemic resistance [6, 7]. Among the microorganisms that can protect plants against pathogens are the endophytes [8]. These microorganisms inhabit plant intercellularly and are therefore less exposed to environmental stresses than the rhizobacteria, so endophyte used potential as biocontrol agents [9]. Recently it has also been shown that they enhance

plant growth and health [10, 11], although they could be potential biocontrol agents of diseases by antagonizing bacterial and fungal plant pathogens [8].

*Xanthomonas oryzae* pv. *oryzae* is the pathogen of bacterial leaf blight of paddy that a main disease constrains production of staple crop in many countries of the world. Identification of *X. oryzae* pv. *oryzae* (Xoo) was conducted based on the disease symptom, pathogenicity, morphological, physiological, and genetic characteristics of bacterial cultures isolated from the infected plants. The characteristics of Xoo is aerobic, rod shaped, and Gram negative. The isolates were evaluated for their hypersensitivity in tobacco and pathogenicity in rice plants. Their isolates induced hypersensitive reaction in tobacco and showed pathogenicity symptom in paddy in different length. The symptom of bacterial leaf blight showed generally infects leaves, but its distribution depends highly on its environmental conditions (12). Infection usually starts from tip of the leaf and spreads all the way to the base. Symptoms that occur in paddy during its vegetative phase are called *kresek*, and in its generative phase they're called blight (13, 14). If pathogen attacks the plant during the seed phase, its leaves will wither, curl, and become grayish-green in color. If attack occur on mature plants, the leaves will turn pale yellow. Xoo has the potential to reduce yield up to 50% or more depending on the variety, stage of the crop and climate conditions.

Endophytic bacteria are bacteria that living at internal tissues of plant (root, stem, leaf, flower), and doesn't cause symptoms in plants, and is even beneficial effect on their host because of it can increase plant growth by being able to produce compounds that are secondary metabolites such as antibiotics, enzymes, and others [15]. Endophytic bacteria activity is a tool that directly or indirectly affects plant growth and health. The direct activity of endophytic bacteria as pathogenic biocontrol is evidenced by the mechanism of antibiosis producing siderophore, HCN, enzymes, and other compounds that are antibacterial or antifungal. The capability to colonize internal tissue make endophytic bacteria can against pathogens by mechanism of competitive site and nutrient or produce antagonistic substance [16]. The penetrate of endophytic bacteria to internal tissues of the plant is connected by their capability to produce cellulase [17]. Controlling of bacterial leaf blight with endophytic bacteria from paddy healthy root had prospects for tools in plant disease management. The indirect mechanism of the endophytic bacterial was to promote plant growth and induce systemic resistance of plants against some pathogens.

The objective of this research was to know the effectivity of controlling the endophytic bacteria against bacterial leaf blight of paddy.

## 2. Methods

The research was conducted in two steps namely in screen house and paddy fields. The assay of endophytic bacteria in screen house conducted with artificial inoculation by clipping methods, and in paddy fields by natural inoculation of Xoo because the bioassay at an endemic area of bacterial leaf blight.

### 2.1. Bioassay for the effectiveness of endophytic bacteria to control bacterial leaf blight at the screen house

Eight endophytic bacteria from healthy paddy root and one control tested for suppressing bacterial leaf blight conducted in screen house. The experiment arrange with Completely Randomized Design with nine treatments and three replicated. The treatments were K: control, B1: Endophytic bacteria (EB) from Karangwangkal 5 + Xoo; B2: EB Karangwangkal 7 + Xoo; B3: EB Karangwangkal 8 + Xoo; B4: EB Sumbang 1 + Xoo; B5: EB Sumbang 3 + Xoo; B6: EB Serayu 5 + Xoo; B7: EB Serayu 7 + Xoo; B8: EB Somagede 1 + Xoo. The application of endophytic bacteria by seed dressing over night, and spraying at 20 and 30 days after transplanting with population density is  $10^9$  cfu/mL. The inoculation Xoo by clipping method at 30 days after transplanting on polybags with population density of Xoo was  $10^9$  cfu/mL. Variable observed were incubation periods, disease intensity, infection rate and effectivity control. The disease intensity was observed with formula by (18, 19),  $DI = \{\sum(n \times v) / Z \times N\} \times 100\%$ , DI: disease intensity, n: number of plant in each symptom category, v: category score number, Z: the highest category, N: number of observed plant. The category of symptom are: 0: no symptom, 1: 1-5

square, 2: 6-10 square, 3: 11-15 square, 4: 16-20 square, 5: 21-25 square. One square means 4 mm<sup>2</sup>. The Incubation period observed if the first symptom appear. Infection rate calculate by (20)  $X_t = X_o.e^{rt}$ , and r was infection rate that calculate by *simple interest disease* value was  $r = 2,3/t \{ \log 1/(1-X_t) - \log 1/(1-X_o) \}$ , r: infection rate,  $X_t$ : proportion of symptom at t time and  $X_o$ : proportion of symptom at previously appear. The effectivity control of endophytic bacteria against bacterial leaf blight was found by compare with disease intensity of treatment and the control. Data was analyzed by anova and if significant effect than continued by DMRT 5%.

## 2.2. Bioassay for the effectiveness <sup>5</sup> of endophytic bacteria for control bacterial leaf blight at the paddy fields

The result of bioassay at the screen house, and the selection endophytic bacteria from laboratory assay, the selected isolates were three endophytic bacteria namely SM1 isolates from Somagede 1, SB1 from Sumbang 3 and SB3 from Sumbang 3, that their isolates used to paddy fields bioassay to suppressing bacterial leaf blight disease. The experiment arranged with Randomized Completely Block Design four treatments and six replicated. The treatments were A: control, B: Endophytic bacteria (EB) from Somagede 1 (SM1); C: EB Sumbang 1 (SB1); D: EB Sumbang 3 (SB3). The application of endophytic bacteria by seed dressing over night, and spraying at 20, 30, and 40 days after transplanting with population density is 10<sup>9</sup> cfu/mL. The inoculation Xoo by natural inoculation (in endemic location of bacterial leaf blight). Variable observed were incubation periods, disease intensity, infection rate, and effectivity control, with the same formula previously at the screen house assay. Data was analyzed by anova and if significant effect than continued by BNT 5%.

## 3.Result and Discussion

### 3.1 Bioassay for the effectiveness <sup>5</sup> of endophytic bacteria to control bacterial leaf blight at the screen house

The disease intensity of bacterial leaf blight at the screen house showed a decrease in the application of endophytic bacteria. Table 1 showed that all of endophytic bacteria can suppress the bacterial leaf blight, their potentional effect significant different with control. The incubation period in range 3-6 days after inoculation. Sumbang 1 (B4) isolate had the best effectiveness in controlling bacterial leaf blight with disease intensity and control effectiveness of 8,68% and 64,16% respectively. This effectiveness is caused by the isolates from suboptimal area where the high of Fe and Al which are endophytic bacteria isolated from healthy plants among the symptomatic plant around them so that endophytic bacteria can produce siderophores which are used to chelate Fe into siderophore-Fe compounds which available for plant. Pathogens have less Fe, so their growth and infection process was inhibited. The occurrence Fe<sup>3+</sup> deficiency required by pathogens because of Fe<sup>3+</sup> is bound by siderophore [21]. Apart from that iron is an important element in the development disease, so that the binding of iron by siderophore then the pathogen is less able to infect, so inhibits disease progression [22].

Table 1. Pathosystem component of BLB after endophytic bacterial application in screen house

Treatment	Incubation Period (dai)	Disease Intensity (%)	Effectiveness (%)
Control	3	24,22 a	0
B1	3	12,66 b	47,73
B2	4	14,08 b	41,87
B3	5	13,86 b	42,77
B4	4	8,68 c	64,16
B5	5	13,26 b	45,25
B6	4	15,18 b	37,32
B7	3	15,02 b	37,98
B8	6	12,28 b	49,29

Notes: The same letter after the value in same colom showed not significant different by DMRT 5%

K: control, **B1**: Endophytic bacteria (EB) from Karangwangkal 5 + Xoo; **B2**: EB Karangwangkal 7 + Xoo; **B3**: EB Karangwangkal 8 + Xoo; **B4**: EB Sumbang 1 + Xoo, **B5**: EB Sumbang 3 + Xoo; **B6**: EB Serayu 5 + Xoo; **B7**: EB Serayu 7 + Xoo; **B8**: EB Somagede 1 + Xoo.

### 3.2 Bioassay for the effectiveness of endophytic bacteria to control bacterial leaf blight at the paddy fields

The assay of endophytic bacteria at paddy fields showed in Table 2 that incubation periods 30 days after transplanting on control and a delay of symptoms appear until 42 days after transplanting on C treatment (SB1 isolate). The disease intensity at paddy fields showed a significant difference between control and three endophytic bacterial treatments. Sumbang 1 isolate is the best control to reduce the disease intensity of bacterial leaf blight. This result showed by plant growth and yield were better than other treatments. The endophytes treated paddy plots showed a significantly lower intensity of bacterial leaf blight (17,180%) compared to untreated control plots (33,778%), which also recorded a higher grain yield. Endophytic bacteria that identification by (23) as the *B. subtilis* (FZB 24) treated rice plants registered higher induction of defence related enzymes, peroxidase, polyphenol oxidase and phenylalanine ammonia lyase and resulted in higher accumulation of total phenols compared to untreated control plants. The endophytes treated rice plots registered a significantly lower intensity of bacterial leaf blight (2.80%) compared to untreated control plots (19.82%), which also recorded a higher grain and straw yield. Endophytic bacteria can reduce intensity of bacterial leaf blight and promote plant growth by increase in IAA production, number of tillers, and leaf size (24).

Table 2. Pathosystem component of BLB after endophytic bacterial application in paddy fields

Treatment	Incubation period (dat)	Disease intensity (%)	Infection rate (unit.day <sup>-1</sup> )	Effectiveness (%)
A: Control	30	33,778 a	0,088	0
B: SM1	38	24,212 b	0,038	28,32
C: SB1	42	17,180 c	0,024	49,14
D: SB3	40	23,762 b	0,040	29,65

Notes: The same letter after the value in same colom showed not significant different by BNT 5%

The progress curve of bacterial leaf blight showed in Figure 1, that control one was the highest intensity in every time observation. This evidence indicated that endophytic bacteria can support plants resistance to disease, which explains by their produce the peroxidase, phenol total, and other enzymes for biochemical defence of plants.



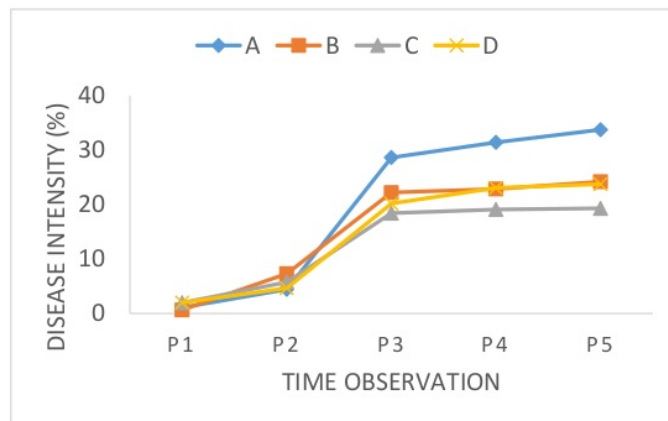


Figure 1. Disease Progress Curve of bacterial leaf blight on paddy fields

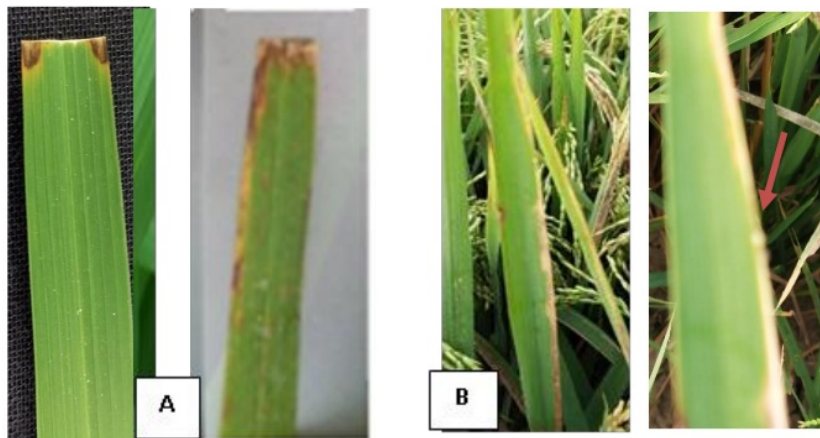


Figure 2. Symptom of bacterial leaf blight on screen house (A) and paddy fields (B)

Disease syndrome of bacterial leaf blight showed in Figure 2 (A) three days after inoculation the first symptom was appeared by yellow to brown necrosis and then the end of observation the necrosis was expanding along with the leaves. In the paddy fields, the symptom of bacterial leaf blight showed wider and yellow to greys. In the morning observation showed some ooze bacteria Xoo like drop on surface leaves (Figure 2B).

#### 4. Conclusion

The endophytic bacteria could suppress the disease, and the isolate of SB1 (from Sumbang ) is the best for antagonistic effect by 64,16% and 49,14% effectivity at screen house and paddy fields respectively. The infection rate of this disease was slow by 0.024 unit.day<sup>-1</sup> and different with the control was 0.088 unit.day<sup>-1</sup>.

#### References

- [1] Pimenta RS, Silva JFM, Coelho CM, Morais PB and Rosa CA 2010 Integrated control of *Penicillium digitatum* by the predacious yeast *Saccharomycopsis crataegensis* and sodium bicarbonate on oranges. *Braz J Microbiol* **41** 404–410
- [2] Syed Ab Rahman SF, Singh E, Pieterse CMJ and Schenk PM 2018 Emerging microbial biocontrol strategies for plant pathogens. *Plant Sci* **267** 102–111.
- [3] Hynes RK and Boyetchko SM 2006 Research initiatives in the art and science of biopesticide formulations. *Soil Biol Biochem* **38** 845–849.
- [4] Ramalingam J, Savitha P, Alagarasan G, Saraswathi R. and Chandrababu R 2017 Functional marker assisted improvement of stable cytoplasmic male sterile lines of rice for bacterial blight resistance. *Front Plant Sci* **8** 1131.
- [5] Beric T, Kojic MO, Stankovic S, Topisirovic LM, Degrassi G, Myers M, Venturi V and Fira DA 2012 Antimicrobial activity of *Bacillus* sp. natural isolates and their potential use in the biocontrol of phytopathogenic bacteria. *Food Technol Biotechnol* **50** 25–31.
- [6] Verhagen BWM, Trotel-Aziz P, Couderchet M, Hofte M and Aziz A 2010 *Pseudomonas* spp.-induced systemic resistance to *Botrytis cinerea* is associated with induction and priming of defense responses in grapevine. *J Exp Bot* **61** 249–260
- [7] Bae H, Roberts DP, Lim HS, Strem MD, Park SC, Ryu CM, Melnick RL and Bailey BA 2011 Endophytic *Trichoderma* isolates from tropical environments delay disease onset and induce resistance against *Phytophthora capsici* in hot pepper using multiple mechanisms. *Mol Plant Microbe Interact* **24** 336–351
- [8] Ryan RP, Germaine K, Franks A, Ryan DJ and Dowling DN 2008 Bacterial endophytes: recent developments and applications. *FEMS Microbiol Lett* **278** 1–9.
- [9] Melnick RL, Suarez C, Bailey BA and Backman PA 2011 Isolation of endophytic endospore forming bacteria from *Theobroma cacao* as potential biological control agents of cacao diseases. *Biol Control* **57** 236–245
- [10] Taghavi S, Garafola C, Monchy S, Newman L, Hoffman A, Weyens N, Barac T, Vangronsveld J 2009 Genome survey and characterization of endophytic bacteria exhibiting a beneficial effect on growth and development of poplar trees. *Appl Environ Microbiol* **75** 748–757
- [11] Dalal J and Kulkarni N 2013 Population dynamics and diversity of endophytic bacteria associated with soybean. *Brit. Microbiol Res J* **3** 96–105
- [12] Sudir S and Yuliani D 2016 Composition and distribution of *Xanthomonas oryzae* pv. *oryzae* pathotypes the pathogen of rice bacterial leaf blight in Indonesia *Agrivita* **38** (2) 174
- [13] Shanti ML, Shenoy V, Devi GL, Kumar M, Premalatha P, Kumar GN, Shahidhar HE, Zehr UB & Freeman WH 2010 Marker-assisted breeding for resistance to bacterial leaf blight in popular cultivar and parental lines of hybrid rice. *J Plant Pathol* **92** (2) 495-501
- [14] Noer Z, Hasanuddin, Lisnawati and Suryanto D 2018 Pathotipe profile of *Xanthomonas oryzae* pv. *oryzae* isolates from North Sumatra. *IOP Conf.Series: Earth and Environmental Science* **122** (2018) 012142
- [15] Desriani, Kusumawati DE, Rivai A, Hasanah N, Amrinola W, Triratna L, and Sukma A 2013 Potential Endophytic Bacteria for Increasing Paddy Var Rojolele Productivity. *International Journal on Advanced Science Engineering and Information Technology* **3**(1) 76-68

- [16] Pal A, Chattopadhyay A, Paul AK 2012 Diversity and Antimicrobial Spectrum of Endophytic Bacteria Isolated from *Peaderi foetida* L. *Int J Curr Pharm Res* **4** (3) 123-127
- [17] Hardoim PR, van Overbeek LS, van Elsas JD 2008 Properties of bacterial endophytes and their proposed role in plant growth. *Trends Microbio* **116**:463–471
- [18] Djatmiko HA, Prakoso B, and Prihatiningsih N 2011 Penentuan patotipe dan keragaman genetik Xoo pada padi di wilayah karesidenan banyumas *JHPT Tropika* **11**(1) 35-46
- [19] Suganda T, Yulia E, Widiani F and Hersanti 2016 Intensitas penyakit blas (*Pyricularia oryzae* Cav.) pada padi varietas ciherang di lokasi endemik dan pengaruhnya terhadap kehilangan hasil. *Jurnal Agrikultura*. **27**(3) 154–159.
- [20] van der Plank JE. 1963. *Plant Disease: Epidemic and Control*. Academic Press, New York.
- [21] Sharma A and Johri BN 2003 Growth promoting influence of siderophore-producing *Pseudomonas* strain GRP3A and PRS9, in maize (*Zea mays* L.) under iron limiting conditions *Microbiol Res* **158** (3) 243-248
- [22] Prihatiningsih N, Djatmiko HA, Lestari P 2017 Aktivitas siderofor *Bacillus subtilis* sebagai pemacu pertumbuhan dan pengendali patogen tanaman terung. *JHPT Tropika* **17**(2) 170-178
- [23] Nagendran K, Karthikeyan G, Peeran MF, Raveendran M, Prabakar K and Raguchander T 2013 Management of Bacterial Leaf Blight Disease in Rice with Endophytic Bacteria *World Applied Sciences Journal* **28** (12) 2229-2241
- [24] Prihatiningsih N, Djatmiko HA, and Lestari P 2020 Screening of competent rice root endophytic bacteria to promote rice growth and bacterial leaf blight disease control. *JHPT Tropika* **20**(1) 78-84

#### **Acknowledgement**

This research was support by DRPM Kemenristek Dikti by the “Penelitian Terapan” scheme 2019-2020. Thanks to all parties involved in this research.



# Endophytic bacteria: an emerging tools for biological control bacterial leaf blight of paddy

## ORIGINALITY REPORT

18%

SIMILARITY INDEX

14%

INTERNET SOURCES

14%

PUBLICATIONS

7%

STUDENT PAPERS

## PRIMARY SOURCES

1

[ri.conicet.gov.ar](http://ri.conicet.gov.ar)

Internet Source

6%

2

[idosi.org](http://idosi.org)

Internet Source

3%

3

Submitted to Higher Education Commission  
Pakistan

Student Paper

3%

4

[www.insightsociety.org](http://www.insightsociety.org)

Internet Source

2%

5

Nur Prihatiningsih, Heru Adi Djatmiko, Puji  
Lestari. "SCREENING OF COMPETENT RICE  
ROOT ENDOPHYTIC BACTERIA TO  
PROMOTE RICE GROWTH AND BACTERIAL  
LEAF BLIGHT DISEASE CONTROL", Jurnal  
Hama dan Penyakit Tumbuhan Tropika, 2020

Publication

2%

6

[sfamjournals.onlinelibrary.wiley.com](http://sfamjournals.onlinelibrary.wiley.com)

Internet Source

2%

---

Exclude quotes      On

Exclude bibliography      On

Exclude matches      < 1%