

Paper 1

by Retno Supriyanti

Submission date: 18-Mar-2023 12:52PM (UTC+0700)

Submission ID: 2039886881

File name: 21873-44998-1-PB-1.pdf (1.21M)

Word count: 6303

Character count: 31071

Preliminary process in blast cell morphology identification based on image segmentation methods

Retno Supriya¹, Pangestu F. Wibowo², Fibra R. Firmanda³, Yogi Ramadhani⁴, Wahyu Siswandari⁵

^{1,2,3,4}Department of Electrical Engineering, Jenderal Soedirman University, Indonesia

⁵Department of Medical, Jenderal Soedirman University, Indonesia

Article Info

Article history:

Received Jan 3, 2019

Revised May 4, 2020

Accepted May 12, 2020

Keywords:

Active contour

Blast cell

Developing countries

Image processing

Watershed

ABSTRACT

The diagnosis of blood disorders in developing countries usually uses the diagnostic procedure complete blood count (CBC). This is due to the limitations of existing health facilities so that examinations use standard microscopes as required in CBC examinations. However, the CBC process still poses a problem, namely that the procedure for manually counting blood cells with a microscope requires a lot of energy and time, and is expensive. This paper will discuss alternative uses of image processing technology in blast cell identification by using microscope images. In this paper, we will discuss in detail the morphological measurements which include the diameter, circumference and area of blast cell cells based on watershed segmentation methods and active contour. As a basis for further development, we compare the performance between the uses of both methods. The results show that the active contour method has an error percentage 5.15% while the watershed method has an error percentage 8.25%.

Copyright © 2020 Institute of Advanced Engineering and Science.
All rights reserved.

Corresponding Author:

Retno Suprianti,

Department of Electrical Engineering,

Jenderal Soedirman University,

Kampus Blater, Jl. Mayjend Sungkono KM 5, Blater, Purbalingga, Central Java.

Email: retno_suprianti@unsoed.ac.id

1. INTRODUCTION

Identification of blood cells is one of the diagnostic procedures used to identify various diseases. This diagnostic procedure is commonly called the CBC. CBC is a blood test that provides information to doctors about five main parts of blood. The five parts are three types of cell (red blood cells, white blood cells, and platelets) and two types of values (hemoglobin value and hematocrit value) [1]. This CBC procedure is widely applied in developing countries including Indonesia because of limited facilities and resources in the medical field. However, the CBC process still poses a problem, namely that the procedure for manually counting blood cells with a microscope requires a lot of energy and time, and requires a high cost. Blood cells are classified into several types, namely red blood cells, white blood cells often called as leukocytes, and blood platelets. The blood component has specific roles and functions in the circulation process throughout the body. Blood can experience abnormalities that occur mainly in its constituent structures. This disorder results in a disorder or disease in the body. One blood disorder that can occur is acute lymphoblastic leukemia (ALL).

Cancer death rates including leukemia are higher in developing countries compared to developed countries. This difference reflects differences in risk factors and the success of handling detection, as well as the availability of treatment [2]. According to the latest World Health Organization (WHO) data published in 2017 leukemia deaths in Indonesia reached 9,179 or 0.55% of total deaths. The age adjusted death rate is 4.20 per 100,000 of population [3]. According to the fact, it is seen that the presence of blood cell abnormalities such as leukemia is a case that needs serious attention.

As explained in the paragraph above, one of the causes of the high mortality rate of leukemia in developing countries including Indonesia is the limited human resources and health facilities. One alternative to overcome this problem is the implementation of technology that is cheap and easy to use, but also accurate, and one of them is digital image processing. Research on leukemia that involves the use of digital image processing itself is quite a lot. Zhang [3] researched leukocyte detection using digital image processing, specifically a combination of image segmentation and pattern recognition. In the segmentation of the image, he divided the image of leukocytes into several parts. While for the classification he uses support vector machine (SVM). Mohapatra [4] introduced the clustering method using shadowed c-means (SCM) in the segmentation of blood microscopic images. SCM method is used to classify each pixel in 4 clusters. The algorithm is used to separate the nucleus and cytoplasm in each sub-image. Negm [5] in his research, he used a decision support system that included panel selection and segmentation using K means clustering on some datasets on leukemia identification. Ali [6] proposed an algorithm to isolate and count lymphocytes in the image of white blood cells. The process made includes cell segmentation, scanning algorithms, feature extraction, and lymphocyte cell recognition. Rawat [7], In his research, he proposed a new method for distinguishing acute lymphoblastic leukemia from normal lymphocytes. This method separates leukocytes from other blood cells and then extracts all the information inside. Separation is based on Gray level co-occurrence matrices (GLCM) and form-based features. Prinyakupt [8] he proposed a system for segmenting white blood cells into the area of the nucleus and cytoplasm, extracting appropriate features and classifying them into five types namely basophil, eosinophil, neutrophil, lymphocyte, and monocyte. Liu [9] he proposed a method of calculating red blood cells in full automatic based on hyperspectral microscopic images and combining spatial and spectral information to obtain maximum precision. Lin [10] he proposed a method for classifying five types of leukocytes using a method based on multi-scale regional growth and grouping mean values. The way to do this is to extract the leukocyte texture feature that is visually visible. For the classification, he uses the support vector machine (SVM) method. Li [11] he proposed a method for recognizing leukocytes for human blood smears based on island clustering texture (ICT). The way to do this is to analyse the features of a typical class of leukocytes to form an ICT model. Sarrafzadeh [12] in his research, he used texture features in recognizing leukocytes. He focused on seven categories of texture features in order to get the best category in the classification of leukocytes. Porcu [13] developed a semi-automatic method of extracting all the information on red blood cells and calculating the amount in detail. Umamaheswari [14] proposed an algorithm for segmenting nuclei in white blood cells in leukemia identification. The algorithm developed is based on Otsu's thresholding. Gupta [15] in his research, he presented the PCSeg Tool for segmenting blood plasma cell images. The algorithm that he uses is pre-processing the existing input images by removing all information that is not needed so that all that remains is the region that does provide information about the blood plasma cells only.

Our research also aims to develop a simple system that is efficient and effective in the process of identifying leukocyte cells, according to the limited facilities and infrastructure in several rural areas in Indonesia. Our main contribution is the optimization of the use of simple methods but can provide accurate results in leukocyte identification based on the image of white blood cell smears photographed without illumination settings. We have done some preliminary research [16-21]. Salmam [22] researched facial recognition into a form of emotion using artificial neural networks. Carpio et al., [23] they researched an automatic analysis of bacilli numbers. Also, about calculating the concentration level therein on the sputum sample image of patients with tuberculosis. However, the results obtained are not optimal, because the conditions of the input image are acquired without using the light illumination settings. Therefore it is difficult to apply to input images with various illumination conditions. This paper will discuss the comparison of the use of watershed and active contour methods in obtaining leukocyte segmentation with input images that have random light illumination.

2. RESEARCH METHOD

2.1. Data acquisition

All the data used in this research came from the Pathology laboratory, Hospital "Dr. Margono Soekardjo," Banyumas, Central Java, Indonesia. Figure 1 shows the stages of the data collection for this research. According to Figure 1, from the pathology laboratory, the medical team examined blood cell smears using a standard microscope. The primary purpose of using this conventional microscope is to create a pilot project so that this can be applied in some rural areas in Indonesia where the district does not yet have a digital microscope facility. Currently, it has only digital microscope facilities, just in large hospitals. In Figure 1, an example of the input image that will be used in this research is also shown, which shows that the image input used has a different illumination level.

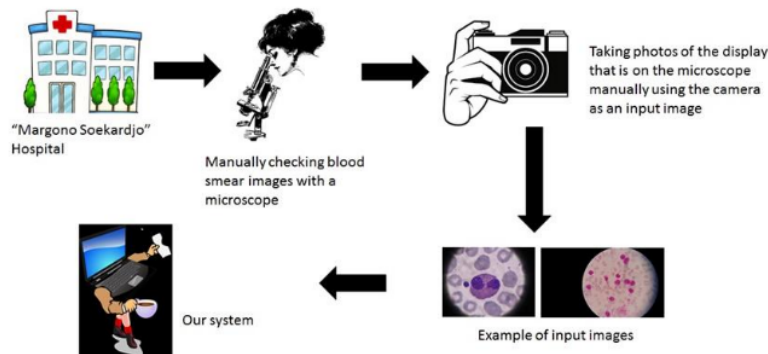


Figure 1. Data acquisition process

2.2. Pre-processing image

2.2.1. Normalization image

The input images used in this research comes from several types of cameras, so the resolution of each input image is different. According to this case, we set the size of the existing input image so that the calculation results are according to parameters and do not depend on size, but also to speed up data processing time. In this research, the image is resized with a calculated scale using the formula in (1).

$$R = \frac{400}{S} \quad (1)$$

In (1), R states the resize scale, S is the smallest value of the dimensions of the length and width of the image. The value of 400 is used as the basis of the calculation to determine the scale where the smallest x or y dimension value is selected as a comparison with the value 400, and the result is used as a scale for the remaining values of x or y. The above calculation is used so that can adjust the characteristics of images that have different lengths and widths. Moreover, to make it easier to recalculate the original pixel size. Table 1 is a comparison table of original dimensions with resizing dimensions.

Table 1. Comparison of original dimensions and resize dimensions

No	Original Dimension	Resize Dimension
1	640 x 480	534 x 400
2	960 x 720	534 x 400
3	4000 x 3000	534 x 400
4	4128 x 2322	712 x 401
5	581 x 1032	400 x 711

2.2.2. Cropping

At this stage, the images obtained are cut using the cropping function in order to obtain the Region of interest (ROI). Cropping is done automatically adjusting the ROI of the image. The process is done by changing the image to binary with a scale of 0.7 then noise cleaning is done by removing objects that have a pixel count of fewer than 4000 pixels. This is done to get objects that only contain ROI. Then scan the object to find the maximum and minimum coordinate values of X and Y. The results are used to calculate the length and width of the object by subtracting the maximum value of the x and y coordinates with the minimum value than using the minimum value of the x and y coordinates as the initial coordinate of cropping. Figure 2 shows the image before and after cropping.

2.2.3. Thresholding

Thresholding in this system aims to remove other objects other than objects of white blood cells in order to improve accuracy at the stage of segmentation that will be carried out. This step is done by utilizing RGB value differences in white blood cell objects and other objects. Sampling is carried out on five pieces of images that represent the condition of each input image. RGB values are taken from 9 pixels of each image consisting of 3 pixels of white blood cells, 3 pixels of red blood cells, three pieces of background pixels-Table 2 shown this process.

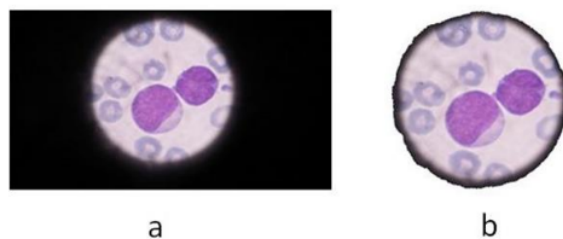


Figure 2. (a) Before cropping, (b) after cropping

Table 2. RGB value sampling results

No	Object	Red	Green	Blue
Img1	White Blood Cell	170	55	86
		146	40	72
		170	93	97
	Red Blood Cell	150	104	88
		142	101	95
		127	97	88
	Background	218	180	109
		215	182	122
		11	11	11
	White Blood Cell	74	30	125
		91	37	133
		131	94	144
Img2	Red Blood Cell	144	119	149
		152	129	157
		153	129	161
	Background	209	193	204
		213	196	206
		13	13	13
	White Blood Cell	142	72	144
		134	67	134
		144	79	145
	Red Blood Cell	165	142	268
		174	157	275
		179	160	180
Img3	Background	186	167	187
		172	158	175
		12	12	12
	White Blood Cell	174	47	118
		175	48	125
		174	59	126
	Red Blood Cell	174	127	137
		178	131	139
		181	136	141
	Background	191	163	159
		193	163	159
		0	0	0
Img4	White Blood Cell	152	35	105
		156	40	103
		138	41	110
	Red Blood Cell	156	125	138
		146	113	130
		164	116	128
	Background	193	153	153
		187	152	150
		1	1	1
	White Blood Cell	152	35	105
		156	40	103
		138	41	110
Img5	Red Blood Cell	156	125	138
		146	113	130
		164	116	128
	Background	193	153	153
		187	152	150
		1	1	1

2.3. Active contour segmentation

Active contour is a segmentation method using a closed curve model that can move wide or narrow to adjust the boundary of a segmented object [24]. In this experiment, Chan-Vese model contour was used where this model is a region-based active contour. In this model statistical information is used inside or outside the curve to determine the direction of evolution and the amount of energy used as described in (2).

$$(c_1, c_2, C) = \mu \cdot \text{length}(C) + v \cdot \text{area}(C) + \int_{\text{inside}(C)} |\mu_0(x, y) - c_1|^2 dx dy + \int_{\text{outside}(C)} |\mu_0(x, y) - c_2|^2 dx dy \quad (2)$$

According to (2), the first part defines the length of the curve, the second part of the area in the curve, the third and fourth parts define the difference in intensity of the input image and the average intensity inside and outside the curve. The value of C is the initial masking curve; the values of c_1 and c_2 are the intensities inside and outside the curve; the value of $\mu_0(x, y)$ is the input image. The more curves close to the desired object boundary, the smaller the value F . Figure 3 shows an example of using the active contour method in segmenting white blood cell images.

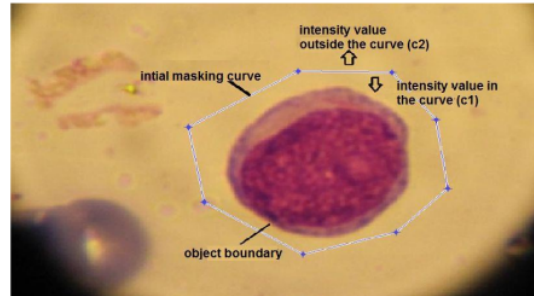


Figure 3. Chan-ese model active contour method

2.4. Watershed segmentation

Watershed transformation is a transformation that brings the perspective of two-dimensional imagery in a three-dimensional viewpoint. Watershed transformation works on grayscale images by using watershed transformation, the image as if it has a three-dimensional form, x , y , and z . The x and y fields are the original image itself, while the z plane is the level of the ash scale in the form of valleys. The thicker the ash level, the deeper the valley [25]. This watershed segmentation method has the advantage of being able to separate objects which are coiled so that objects can be separated as shown in Figure 4. Referring to Figure 4, the object which had previously coincided can be separated by the watershed segmentation method. This is very useful when calculating objects because multicellular cells that are coiled will count as single cells so that the calculation process becomes wrong.



Figure 4. Separation of Objects Coinciding with Watershed Segmentation

2.5. Post processing

The post-processing stage is a stage that aims to improve the quality of the second stage image after the segmentation process is carried out. This stage is done because the results of segmentation still allow producing small objects or noise due to the lack of or excessive process of segmentation. Image improvement must be made with good and clean image quality. The operations performed at the post-processing stage are morphological operations, objection elimination on the border edge, elimination of unusual objects, and object names.

3. RESULTS AND DISCUSSION

In this experiment, the variables to be measured in segmentation with the two methods are the detection of the number of leukocytes in each image, area, maximum diameter, minimum diameter and circumference of leukocyte cells. The first experiment was carried out by exploring information using the results of segmentation of the active contour method. Calculation of cell numbers is done by separating cell objects. The process of separating objects is done by calculating the distance transformation on the object to determine the intersection of objects that are overlapped. Distance values are calculated for each nonzero pixel. The model used in this distance transformation is a city block model. The city block model measures distance based on four neighborhoods. Where if the pixel is in area 4, the distance is calculated by one but if it is not then counted two. In order for getting the best result, the distance in the distance transformation needs to be adjusted by removing the small minima locale on the object. Figure 5 shows the results of the separation of objects in this method.

The next process is noise elimination, which functions to eliminate other objects other than the leukocyte cell object. In this process, three parameters are used for three different functions adjusting to the size of the object of the white blood cell. The parameters used are 10000, 3000, and 300 pixels. Then remove the object that is tangent to the edge of the image. Finally, which image is selected is an unusual object and which is not to be removed. The trick is to calculate the degree of roundness of each object with (3).

$$R = \frac{4\pi A}{P^2} \quad (3)$$

Referring to (3), then R states the Degree of Roundness, A states Area, and P states Circumference. The roundness used in this experiment is 0.78 so if there is an object with a degree of roundness less than that it will be eliminated. Figure 6 shows some examples of the image results of segmentation by active contour method.

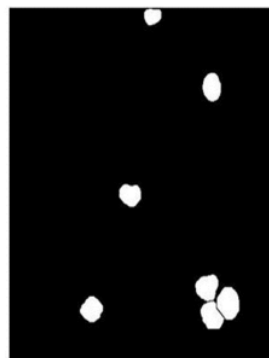


Figure 5. An example of overlapped object separation results

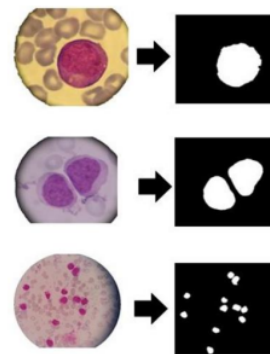


Figure 6. Examples of active contour segmentation result

Referring to Figure 6, the number of leukocyte cells can be segmented using the active contour method. So that based on the segmentation display, the number of leukocyte cells can be calculated automatically. For measurements of diameter, circumference, and area, we refer to (2) above. In (2) above, C1 and C2 are two constants which are the average intensity inside and outside the contour, respectively. Moreover, μ_0 is the input image. On active contour without the edge, it will minimize term fitting and add some term regulations, such as the length of the C curve and the area of the region in C. From the equation, the length of the curve can be measured by (4). While the area is formulated in (5).

$$\int_C \sqrt{1 + (y')^2} dx \quad (4)$$

$$L = \frac{1}{2} \int_C (x dy - y dx) = \frac{1}{2} \int_C (xy' - y) dx \quad (5)$$

In other hand, the watershed segmentation method is a series of methods consisting of watershed transformation, distance transformation, morphological operations, and other related operations. The process of identifying white blood cells in this study is divided into several stages, namely: color threshold, pre-processing, segmentation, post-processing, calculating object parameters. After going through pre-processing as described above, noise is eliminated. Noise removal aims to clean binary images from small objects that are not perfect color thresholds. Also, repairs to the edges of the object are made to be neater and smoother. This operation can be done using image morphology operations. As explained above, watershed segmentation also includes distance transformation. This distance transformation function will produce a set of matrices that contain the transformation value of the distance of each pixel. Distance values are calculated for each nonzero pixel. The chosen model is very decisive towards the results of segmentation because it can allow over segmentation when using the incorrect distance transformation method. According to our experiments using Euclidian, City block, Chess board, Quasy-Euclidian models, and most objects in the form of round objects are not perfect. Therefore, we need a model that has similar shapes or characteristics with the aim that the distance transformation is smooth and later does not cause over-segmentation. With that consideration, it can be seen that the city block method matches the characteristics of the object to be transformed, besides that this model can produce the right segmentation output, while other methods produce over segmentation output.

Referring to (3), properties that can be measured using this function include area, diameter, a circumference of the object. This operation of the elimination of abnormal objects can be done by utilizing the degree of roundness of the object. In order to determine the roundness value of the object, an analysis of the value of the roundness of the object is carried out. Figure 7 shows an example of the property of the degree of roundness of an object. Based on Figure 7, the value of the degree of roundness of strange objects is lower than the standard object. The highest value of the degree of a strange object in the data is 0.53. Therefore, the degree of roundness is taken at a value of 0.6. Figure 8 is an example of an image that has experienced abnormal object elimination.

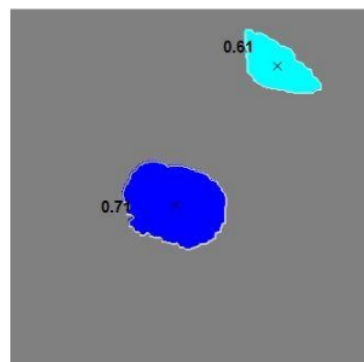


Figure 7. An example of property of roundness object

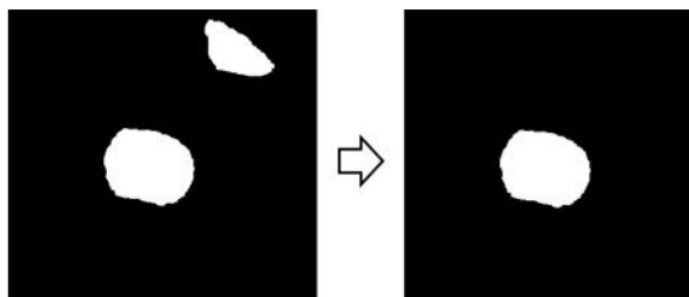


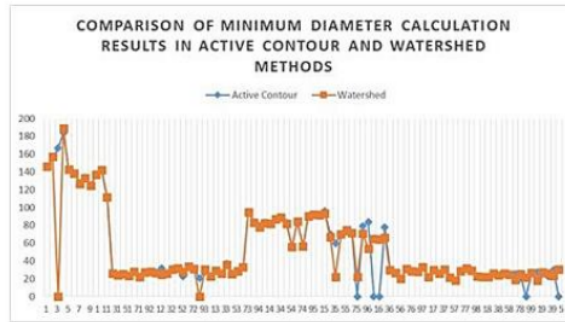
Figure 8. Elimination of abnormal objects

The way to calculate the circumference of this function is to use eight neighbors; each pixel that does not have neighbors will be counted as a circumference of the object. Calculation of diameter is done by calculating the longest distance and the shortest distance from the edge of the object. The results of diameter properties in this study will get two values for the diameter, namely the maximum diameter and minimum diameter. The extensive calculation is done by counting all pixels on the object. Table 3 shows the results of the calculation of the diameter, circumference and area of leukocytes using the active contour and watershed methods. Referring to Table 3, we make a graph of analysis that shows the relationship between the results obtained in each method as shown in Figure 9.

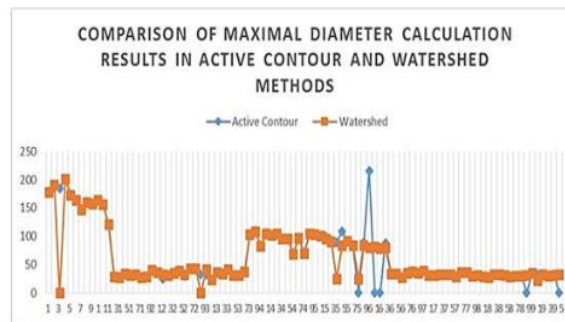
Referring to Table 3 and Figure 9, in general, the results of the measurement of the two methods give almost the same results for each measurement variable. However, for morphological calculations using watershed segmentation, calculation of properties which include Amount, Diameter, Area, and circumference of leukocyte images. The results of the calculation are in the form of a matrix $n \times 1$, where n is the number of objects detected. The way to calculate the circumference of this function is to use eight neighbors; each pixel that does not have neighbors will be counted as a circumference of the object. Calculation of diameter is done by calculating the longest distance and the shortest distance from the edge of the object. The results of diameter properties in this study will get two values for the diameter, namely the maximum diameter and minimum diameter. The extensive calculation is done by counting all pixels on the object.

Table 3. The results of the calculation of the number, diameter, circumference, and area of leukocytes based on the active contour method

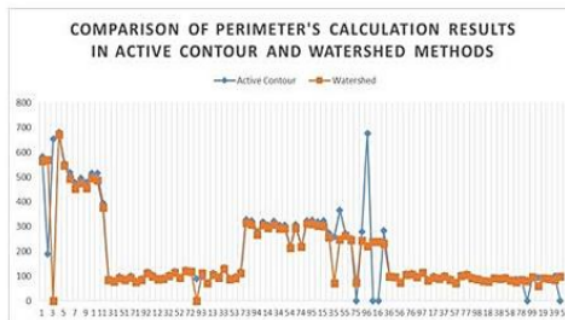
Img	Active Contour				Watershed				Img	Active Contour				Watershed			
	Min D	Max D	P	A	Min D	Max D	P	A		Min D	Max D	P	A	Min D	Max D	P	A
C1	147	178	582	20320	146	179	564	20279	P9	91	105	323	7417	90	104	312	7374
C2	155	186	189	22245	157	191	569	23058	P10	92	104	325	7533	92	104	311	7497
C3	167	184	654	23815	-	-	-	-	P11	92	101	320	7257	92	101	304	7220
C4	184	200	682	28875	189	201	672	29715	P12	96	99	323	7494	93	96	302	7018
C5	143	174	556	19454	143	173	546	19350		70	93	274	5041	67	91	257	4720
C6	139	165	518	17736	139	164	494	17548	A1	60	89	258	4029	22	25	72	432
C7	128	148	478	14568	127	147	453	14373	A2	69	109	366	5324	70	85	249	4634
	134	161	496	16822	133	161	475	16635		73	90	272	5150	75	91	263	5317
C8	125	158	480	15404	124	158	455	15167		70	84	253	4583	71	84	245	4698
	138	164	515	17221	137	164	495	17003		-	-	-	-	22	25	73	436
C9	143	157	516	17393	142	156	487	17219	A3	79	89	279	4645	71	84	242	4610
C10	112	122	396	10551	112	121	377	10483	A4	84	216	677	12338	54	80	220	3360
M1	26	30	90	596	26	29	85	583		-	-	-	-	65	81	240	4098
	24	27	83	510	24	27	78	505		-	-	-	-	64	79	239	3924
	26	34	98	686	26	34	92	672	A5	78	88	283	4057	66	80	232	4088
	23	32	89	569	23	31	85	567	A6	30	33	102	763	30	34	99	768
	28	32	100	706	28	32	93	694		26	34	98	703	27	34	96	706
	23	27	81	475	22	27	76	464		20	27	75	418	20	28	74	422
	27	29	90	617	27	29	86	611		31	35	110	842	31	36	106	845
	28	41	117	865	28	41	112	856		28	38	111	834	29	38	106	845
	27	37	105	762	27	37	99	750		28	34	100	749	28	35	97	754
	32	25	91	620	32	25	87	618		34	39	117	1032	33	40	114	1026
M2	26	31	93	620	26	31	90	621	A7	22	31	86	510	22	31	83	515
	31	35	105	835	31	35	100	834		30	31	100	728	30	31	95	727
	32	40	119	980	32	39	114	966		26	32	93	649	26	32	90	652
	23	30	89	500	28	33	93	706		30	32	102	757	30	32	98	753
	34	43	126	1143	34	43	120	1133		22	33	89	545	22	33	85	546
	31	41	117	985	31	43	118	1034	A8	18	29	76	400	18	29	72	400
	21	32	90	510	-	-	-	-		29	36	106	815	29	36	100	801
	28	33	98	709	31	41	112	981		32	36	110	912	32	36	106	904
M3	23	24	74	425	23	24	71	427		30	30	95	708	30	30	92	700
	29	36	111	777	29	37	106	779	A9	23	31	90	536	23	31	88	538
	26	34	99	691	26	34	93	685		22	29	82	493	22	29	80	498
	37	42	134	1131	36	42	129	1132		22	27	80	473	22	28	78	477
M4	26	31	92	614	26	31	87	609		26	33	94	658	26	33	92	664
	29	31	98	687	28	31	91	675		24	32	92	597	24	32	89	598
	33	37	118	942	33	38	112	941		26	31	96	629	26	31	91	627
P1	95	103	329	7636	95	103	315	7601		24	28	84	542	25	29	82	550
P2	84	109	323	7111	83	108	308	6929		25	29	86	581	19	29	75	437
	80	84	280	5238	78	83	267	5051		21	31	83	511	26	29	84	587
P3	83	105	320	6775	82	104	305	6684		-	-	-	-	21	31	81	512
P4	82	102	306	6472	82	101	295	6433	A10	27	34	99	714	27	35	96	724
P5	87	105	322	7128	87	105	307	7099		27	32	94	664	18	23	61	318
P6	89	96	305	6713	89	96	292	6678		25	30	92	577	27	32	91	671
P7	83	96	305	6198	82	95	293	6093		23	31	89	553	26	30	90	584
	56	70	221	3063	56	69	215	2985		30	32	101	767	23	31	85	551
P8	84	97	307	6384	84	97	295	6392		-	-	-	-	30	33	98	771
	56	70	221	3053	57	70	220	3049									



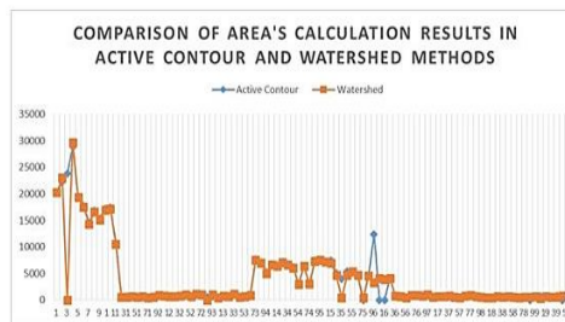
(a)



(b)



(c)



(d)

Figure 9. Graphs of comparison of measurement results based on active contour and watershed methods, (a) minimum diameter, (b) maximal diameter, (c) perimeter, (d) area

Based on the table above, it can be seen that actual cell count: 97 and total cell deviation calculation: 8. In order to calculate the percentage of errors can use the following formula as described in (6).

$$\text{Error percentage} = \left[\frac{\text{Total Deviation}}{\text{Actual Cell Number}} \right] \times 100 \% \quad (6)$$

Using (6) above, the following results are obtained

$$\text{Error percentage} = \left[\frac{8}{97} \right] \times 100\% = 8.25\%$$

Based on the results of watershed segmentation and cell count calculations, it can be concluded that some of the causes of this experiment failure are: (a) Overlapping objects have an irregular shape so that the system does not detect leukocyte cells, so they are not segmented. (b) Other objects besides leukocytes can be detected as leukocytes. This is because the object has characteristics that are similar in color and shape.

In the morphological calculation using the active contour segmentation method, the way to calculate the circumference of this function is to use eight neighbours, each pixel that does not have neighbours will be counted as a circumference of the object. Calculation of diameter is done by calculating the longest distance and the shortest distance from the edge of the object, so in this experiment, there will be two values for the diameter. Extensive calculations are carried out by counting all pixels on the object. In general, the calculation method is the same as the calculation on the watershed segmentation method. We did the morphological calculation using (6) the error percentage can be calculated from morphological calculations based on the segmentation method of active contour.

$$\text{Error percentage} = \left[\frac{5}{97} \right] \times 100\% = 5.15\%$$

Based on the results of segmentation using the active contour method and cell count calculations, it can be concluded that some causes of failure in the experiment are: (a) Overlapped objects have irregular shapes so that over-segmentation occurs or the object is not even segmented. (b) Cells that are truncated or not intact remain detected because they have the size of an object that is almost the same as an intact cell object.

4. CONCLUSION

In this experiment, it was found that both for the use of the watershed segmentation method and the active contour segmentation method, for each image that has different characteristics it will require different treatments. Objects other than leukocyte cells can be detected as white blood cells because they have the same intensity of color and shape. Image segmentation using the Watershed Segmentation method has the advantage of being able to separate the blood cells that are huddled together. While for the segmentation of active contour, overlapped object separation can use the distance transformation method. In order to achieve a high percentage of segmentation success, an image that has uniform characteristics and variable control are needed. In this experiment, the calculation based on the active contour method has a lower error percentage than using the watershed segmentation method.

ACKNOWLEDGEMENTS

We would like to thank the Pathology laboratory, "Prof. Dr. Margono Soekardjo" Hospital for the data that is permitted to be used in this research. The research was funded by the Directorate of Research and Community Service, the Ministry of Research, Technology and Higher Education, Republic of Indonesia through the "Penelitian Terapan" (applied research) scheme.

REFERENCES

- [1] R. Harris, K. Simonsen, and J. Mackay, "Best Tests," BPAC Organization, New Zealand. [Online]. Available: www.bpac.org.nz, 2013.
- [2] D. M. Parkin, F. Bray, J. Ferlay, and P. Pisani, "Global Cancer Statistics, 2002," *CA. Cancer J. Clin.*, vol. 55, no. 2, pp. 74-108, 2009.
- [3] W. H. Organization, "World Health Statistics 2017," 2017.
- [4] S. Mohapatra, D. Patra, and K. Kumar, "Fast leukocyte image segmentation using shadowed sets," *Int. J. Comput. Biol. Drug Des.*, vol. 5, no. 1, pp. 49-65, 2012.
- [5] A. S. Negm, O. A. Hassan, and A. H. Kandil, "A decision support system for Acute Leukaemia classification based on digital microscopic images," *Alexandria Eng. J.*, vol. 57, no. 4, pp. 2319-2332, 2018.

- [6] A. B. Ali and M. Z. Othman, "Segmentation and Feature Extraction of Lymphocytes WBC using Microscopic Images," *Int. J. Eng. Res. Technol.*, vol. 3, no. 12, pp. 696-701, 2014.
- [7] J. Rawat, A. Singh, H. S. Bhadauria, and J. Virmani, "Computer Aided Diagnostic System for Detection of Leukemia Using Microscopic Images," *Procedia Comput. Sci.*, vol. 70, pp. 748-756, 2015.
- [8] J. Prinyakupt and C. Pluempitiwiriyaewej, "Segmentation of white blood cells and comparison of cell morphology by linear and naïve Bayes classifiers," *Biomed. Eng. Online*, vol. 14, no. 1, pp. 1-19, 2015.
- [9] X. Liu, M. Zhou, S. Qiu, L. Sun, H. Liu, Q. Li, and Y. Wang, "Adaptive and automatic red blood cell counting method based on microscopic hyperspectral imaging technology," *Journal of Optics*, vol. 19, no. 12, 2017. doi: 10.1088/2040-8986/aa95d7
- [10] L. Lin and W. Wang, "A robust leukocyte recognition method based on multi-scale regional growth and mean-shift clustering," *J. Algorithms Comput. Technol.*, vol. 12, no. 3, pp. 208-216, 2018.
- [11] X. Li and Y. Cao, "A robust automatic leukocyte recognition method based on island-clustering texture," *J. Innov. Opt. Health Sci.*, vol. 09, no. 01, pp. 1650009-1-1650009-13, 2015.
- [12] O. Sarrafzadeh, A. M. Dehnavi, Y. Hossein, A. Talebi, and A. Gharibi, "The Best Texture Features for Leukocytes Recognition," *J. Med. Signals Sens.*, vol. 7, no. 4, pp. 220-227, 2017.
- [13] S. Porcu, A. Loddo, L. Putzu, and C. Di Ruberto, "White Blood Cells Counting Via Vector Field Convolution Nuclei Segmentation," *Proceedings of the 13th International Joint Conference on Computer Vision, Imaging and Computer Graphics Theory and Applications*, vol. 4, pp. 227-234, 2018.
- [14] D. Umamaheswari and S. Geetha, "A Framework for Efficient Recognition and Classification of Acute Lymphoblastic Leukemia with a Novel Customized-KNN Classifier," *J. Comput. Inf. Technol.*, vol. 26, no. 2, pp. 131-140, 2018.
- [15] A. Gupta, P. Mallick, O. Sharma, R. Gupta, and R. Duggal, "PCSEG: Color model driven probabilistic multiphase level set based tool for plasma cell segmentation in multiple myeloma," *PLoS One*, vol. 13, no. 12, pp. 1-22, 2018.
- [16] R. Supriyanti, M. M. Afif, I. T. Hasan, Y. Ramadhani, and W. Siswandari, "A Simple Tool for Identifying Outer Shape of White Blood Cell Based on Image Processing Techniques in Order To Develop Health Facilities in Developing Countries," *PONTE Int. Sci. Res. J.*, vol. 73, no. 12, pp. 314-325, 2017.
- [17] R. Supriyanti, A. Chrisanti, Y. Ramadhani, and W. Siswandari, "Computer Aided Diagnosis for Screening the Shape and Size of Leukocyte Cell Nucleus based on Morphological Image," *International Journal of Electrical and Computer Engineering (IJECE)*, vol. 8, no. 1, pp. 150-158, 2018.
- [18] R. Supriyanti, B. L. Nababan, Y. Ramadhani, and W. Siswandari, "A Simple and Easy-to-Use Tool for Detecting Outer Contour of Leukocytes Based on Image Processing Techniques," *19th International Conference on Biomedical Applications and Bioinformatics*, 2017.
- [19] R. Supriyanti, G. Satrio, Y. Ramadhani, and W. Siswandari, "Contour Detection of Leukocyte Cell Nucleus Using Morphological Image," *J. Phys. Conf. Ser.*, vol. 824, no. 1, pp. 1-8, 2017.
- [20] R. Supriyanti, Rifai. A. rifai, Y. Ramadhani and W. Siswandari, "Influence of camera types in histogram distribution on morphological identification of myeloblast cell based image segmentation," *J. Phys. Conf. Ser.*, vol. 1321, no. 3, pp. 1-6, 2019.
- [21] R. Supriyanti, "Technology supporting health services for rural areas based on image processing," *J. Phys. Conf. Ser.*, vol. 1367, pp. 1-12, 2019.
- [22] F. Z. Salmam, A. Madani, and M. Kissi, "Emotion recognition from facial expression based on fiducial points detection and using neural network," *International Journal of Electrical and Computer Engineering (IJECE)*, vol. 8, no. 1, pp. 52-59, 2018.
- [23] C. del Carpio et al., "An algorithm for detection of Tuberculosis bacilli in Ziehl-Neelsen sputum smear images," *International Journal of Electrical and Computer Engineering (IJECE)*, vol. 9, no. 4, pp. 2968-2981, 2019.
- [24] V. Casselles, R. Kimmel, and G. Sapiro, "Geodesic Active Contours," *Int. J. Comput. Vis.*, vol. 22, pp. 61-79, 1997.
- [25] R. C. Gonzales and R. E. Woods, "Digital Image Processing," 3rd editio. New Jersey: Prentice Hall, 2008.

BIOGRAPHIES OF AUTHORS



Retno Supriyanti is a Professor at Electrical Engineering Department, Jenderal Soedirman University, Indonesia. She received her PhD in March 2010 from Nara Institute of Science and Technology Japan. Also, she received her M.S degree and Bachelor degree in 2001 and 1998, respectively, from Electrical Engineering Department, Gadjah Mada University Indonesia. Her research interests include image processing, computer vision, pattern recognition, biomedical application, e-health, tele-health and telemedicine.



Pangestu Fajar Wibowo received his Bachelor degree from Electrical Engineering Department, Jenderal Soedirman University Indonesia. His research interest Image Processing field.



Fibra Rhoma Firmanda received his Bachelor degree from Electrical Engineering Department, Jenderal Soedirman University Indonesia. His research interest Image Processing field.



Yogi Ramadhani is an academic staff at Electrical Engineering Department, Jenderal Soedirman University, Indonesia. He received his MS Gadjah Mada University Indonesia, and his Bachelor degree from Jenderal Soedirman University Indonesia. His research interest including Computer Network, Decision Support System, Telemedicine and Medical imaging.



Wahyu Siswandari is an academic staff at Medical Department, Jenderal Soedirman University, Indonesia. She received her Ph.D from Gadjah Mada University. Also, she received his M.S degree and bachelor degree from Diponegoro Indonesia. Her research interest including Pathology, e-health and telemedicine.

Paper 1

ORIGINALITY REPORT

15%
SIMILARITY INDEX

11%
INTERNET SOURCES

11%
PUBLICATIONS

4%
STUDENT PAPERS

MATCH ALL SOURCES (ONLY SELECTED SOURCE PRINTED)

2%
★ Suroso Suroso, Daru Tri Nugroho, Amran Amran, Toshihiko Noguchi. "Parallel Operation of Current-Source Inverter for Low-Voltage High-Current Grid-Connected Photovoltaic System", International Journal of Electrical and Computer Engineering (IJECE), 2019
Publication

Exclude quotes	Off	Exclude matches	Off
Exclude bibliography	On		