

# Effect of Photoperiods on Melatonin Levels, the Expression of cGnRH-II and sGnRH Genes and Estradiols Level in Hard-Lipped Barb (*Osteochilus hasselti* C.V.)

*by* Gratiana E Wijayanti

---

**Submission date:** 09-Apr-2023 12:16PM (UTC+0700)

**Submission ID:** 2059376247

**File name:** Effect\_of\_Photoperiods\_on\_Melatonin\_Levels\_the\_Exp.pdf (627.46K)

**Word count:** 3959

**Character count:** 22339

## Effect of Photoperiods on Melatonin Levels, the Expression of cGnRH-II and sGnRH Genes and Estradiols Level in Hard-Lipped Barb (*Osteochilus hasselti* C.V.)

<sup>1,2</sup>N.A. Prayogo, <sup>3</sup>G.E. Wijayanti, <sup>2,6</sup>Murwantoko, <sup>4</sup>M. Kawaichi and <sup>2,5</sup>P. Astuti

<sup>1</sup>Fisheries and Marine Science, Jenderal Soedirman University, Purwokerto, Indonesia

<sup>2</sup>Gadjadara University, Yogyakarta, Indonesia

<sup>3</sup>Magister Biologi, Jenderal Soedirman University, Purwokerto, Indonesia

<sup>4</sup>Departemen of Biology, Nara Institute Science and Technology, Nara, Japan

<sup>5</sup>Faculty of Veterinary Science, Gadjah Mada University, Yogyakarta, Indonesia

<sup>6</sup>Faculty of Agriculture, Gadjah Mada University, Yogyakarta, Indonesia

**Abstract:** Fish reproduction is influenced by photoperiods through regulation on endocrine gland activities in producing hormones necessary for gonadal growth and development, gametogenesis and reproductive cycles. Research needs to be conducted to find out effect of photoperiod on Nile's (Hard-lipped barb) reproductive performance by manipulating photoperiod. Design experimental with four photoperiod treatments namely 14L:10D, 16L:8D and 18L:6D and control were conducted. Four aquaria consisting of nine fishes each were served as replicates. Fishes were kept under these photoperiods for 4 months. The observed variable was the end point pineal-hypothalamus-pituitary-gonad axis activities. Pineal activity was evaluated by measuring melatonin, hypothalamus activity was evaluated by measuring gene expression of cGnRH-II and sGnRH using Real Time PCR, Gonadal activity was evaluated by measuring Gonado somatic index (GSI) and serum level of estradiol was assayed using ELISA. The average of melatonin in each experimental group significantly decreased according to time ( $P < 0.05$ ) and there was significantly different was observed between each experimental groups. The average of cGnRH-II and sGnRH in each experimental group significantly increased according to time ( $P < 0.05$ ) and there was significantly different was observed between each experimental groups. Similar patterns were also observed for estradiol serum that in each experimental group significantly increased according to time ( $P < 0.05$ ) and there was significantly different was observed between each experimental groups ( $P < 0.05$ ). The average of GSI in each experimental group significantly increased according to time ( $P < 0.05$ ) but there was not significantly different was observed between each experimental groups. These results indicated that photoperiods had stimulatory effect in improving Nile reproductive performance.

**Key words:** Photoperiods %Melatonin %cGnRH-II %sGnRH %Estradiol %Nile

### INTRODUCTION

Reproductive activities in fish are regulated by several environmental and physiological factors [1]. Photoperiod exert its role on reproduction through pineal that integrates and conveys input from external and internal cues to the hypothalamus via melatonin [2] regulating the synthesis and secretion of gonadotropins releasing hormone (GnRHs). GnRHs regulating the synthesis and secretion of gonadotropins (GtHs) [3]. The GtHs regulate the two main activities of the gonads i.e. hormone and gamete production [4, 5]. Ovarian

hormones especially estradiol and progesterone play an important role in maintaining and promoting metamorphosis [6, 7]. Photoperiod is one of important cues for the timing of spawning in many fish species as gold fish [8], Atlantic salmon [9], Atlantic Halibut [10], Atlantic cod [11], Eurasian Perch [12], sturgeons [13] and *Oreochromis niloticus* [14].

The majority of studies were conducted on temperate-zone fishes in which photoperiod strictly differ between seasons. Studies on influence of photoperiod on tropical fishes are still limited. It is interesting to examine whether photoperiod will induce a similar response in

**Corresponding Author:** N.A. Prayogo, Fisheries and Marine Science, Jenderal Soedirman University, Purwokerto, Indonesia.

tropical fishes as the case for its temperate-zone counterpart. In this study, hard-lipped barb (*Osteochilus hasselti* C.V.) was used as a model since hard-lipped barb is an indigenous tropical fish and widely cultured in Java [15]. Therefore studies to improve understanding of its biological aspect will be benefit not only for research but also for the fish farmers.

Hard-lipped barb is a synchronous batch spawner fish capable of spawning several time during the peak of the spawning period [15]. Under a suitable environmental setting, this fish capable to spawn in 60 days after the previous spawning. Hard-lipped barb has been adapted to a photoperiod of 12L:12D to 14L:10D. The present study was examined the effect of different photoperiods length on melatonin level, gene expression of cGnRH-II and sGnRH and estradiol level of the hard-lipped barb.

## MATERIALS AND METHODS

**Animals:** 144 sexually mature female hard-lipped barb weighing of 100 g in average were maintained at Laboratory of Fisheries and Marine, Jenderal Soedirman University. They were induced to spawn using ovaprim 0.5 ml/kg body weight [16]. The day of spawning was designated as day 25 post spawning period. The post-spawned females were divided into 4 groups. Each group consisted of 4 aquaria with 9 fish/50 L water.

In this study, three types of photoperiods namely 14L:10D, 16L:8D and 18L:6D and control have been tested toward concentration of melatonin, GnRH gene expression and concentration of estradiol. The aquaria were covered with light proof black polybag. The light source provided from 25 Watt (Phillips) bulb regulated by automatic timers 24 hours cycles which were placed on the top of each aquarium. In photoperiod of 14L:10D, light was turned on since 06.00 am until 08.00 pm and in 16L:8D light was turned on since 06.00 am until 10.00 pm and in 18L:6D light was turned on since 04.00 am until 10.00 pm locally. Then, the fish were reared for four months at the laboratory of Aquaculture Department of Marine and Fisheries, university of Djenderal Soedirman.

During the research, fish were fed on commercial pellet (protein 37% and fat 10%) as much as 3% of total body weight daily [17]. The water was siphoned regularly to maintain water quality. The water temperature, dissolved oxygen, pH and carbondioxide were monitored every months. Every sampling time, 9 fish were bled for Melatonin and Estradiol 17- $\beta$  measurement. The brain were collected from 3 fish of each group and were snap-frozen on liquid nitrogen for GnRH expression study. For measuring melatonin and Estradiol, blood resulted

from 9 fish were withdrawn, then serum were assayed using enzyme-linked immunosorbent assay (ELISA) at the Laboratory of clinical pathology, faculty of veterinary medicine, Gadjah Mada University. The expression of GnRH was evaluated using Real Time PCR applying generated primers derived from cGnRH-II and sGnRH. Real Time PCR was conducted at the Laboratory of Gene Function Animal, Nara Institute Science and Technology, Japan.

**mRNA Isolation and DNase Treatment:** Total mRNA was extracted from whole brain using Sepasol R-RNA super-1 reagent, based on Ethanol-phenol-chloroform extraction method [18]. The integrity of the RNA was verified in a denaturing agarose gel, stained with ethidium bromide. The RNA samples were treatment with DNase free RNase (Takara). The quality and concentrations of total RNA were determined by agarose gel electrophoresis and optical density reading at 260 and 280 nm (Figure 1), the RNA were aliquoted in batches and frozen at -70°C.

**RT-PCR:** Total mRNA samples (1  $\mu$ l) were reverse transcribed using cDNA synthesis kit (PrimeScript™ Reverse Transcriptase, Takara Bio.Inc) using Random 6 mers (sequence pd (N)<sub>6</sub>, 50  $\mu$ M) primers and prime script R-tase with manufacture instruction.

**Quantitative Real Time Analysis:** The primers were designed based on cGnRH-II (accession numbers JN867720) and sGnRH (accession numbers JN867721) using the Primer software. The generated primer used in this study were as follows: sGnRH forward 5-TGGTGTGTGTGTTGGAGG TT -3, sGnRH reverse 5-AATGTTGCCTCCACTTCACC-3; cGnRH-II forward 5-CATCTGCAGGCTGTTTGTGG-3, cGnRH-II reverse 5-TGCTGAGAG CTGGCAAAC TG -3. Goldfish actin (GenBank accession number AB039726.2), used as endogenous control, was amplified by the following primers-actin forward 5-GAGCTATGAGCTCCCTGACGG-3, actin reverse 5-AAACGCTCATTGCCAATGGT-3-and were used to normalize variations in RN (Figure 2C). After optimization, PCR reactions were performed in a 10  $\mu$ l volume containing 2  $\mu$ l cDNA, 5  $\mu$ l SYBR mix (Applied Biosystem), 0.3  $\mu$ l forward primer, 0.3  $\mu$ l reverse primer and 2.4  $\mu$ l H<sub>2</sub>O using the following condition: 95°C for 45 s, (45 cycles of 95°C for 15 s and 60°C for 1 min), then 95°C for 15 s, 60°C for 15 s and 95°C for 15 s. The results were analyzed using the standard curve mode, according to the manufacturer's recommendations (Applied Biosystems).

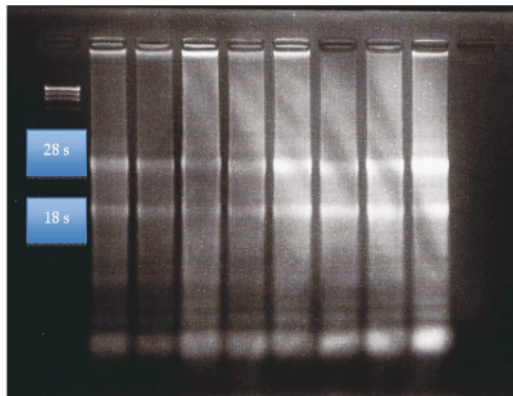


Fig. 1: RNA isolated from the brain of hard-lipped barb kept under different photoperiod for 4 month

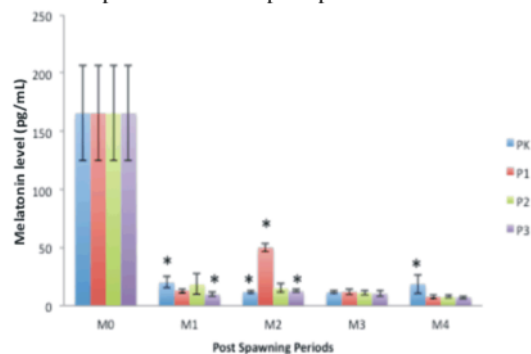


Fig. 2: Melatonin Levels of hard-lipped barb kept under different photoperiod for 4 month. (PK=control, P1=14L:10D, P2=16L:8D, P3=18L:6D, M=Month). (\*: Significantly different)

**Measurement of Melatonin Levels by Enzyme Linked Immunosorbent Assays:** Melatonin levels were determined by ELISA using commercial kits (REF EIA-1431, DRG diagnostic) and extraction column C18 RP.1cm<sup>3</sup>/100mg (REF KEME761) according to manufacture instructions. Each samples were analyzed in duplicate.

**Measurement of Estradiol Levels by Enzyme Linked Immunosorbent Assays:** Serum estradiol (E2) levels were determined DRG Estradiol ELISA (EIA- 2693). according to manufacturer's instruction. Duplicate were provided for each measurement.

**Gonado-Somatic Index (GSI):** Was calculated as the weight of the gonads relative to the total body weight, expressed as a percentage [19, 20].

**Data Analysis:** The mRNA levels for each photoperiods treatment form were expressed as the ratio of GnRH mRNA to actin mRNA and then normalized as a percentage of M0 (pre treatment) group. Levels of mRNA corresponding to sGnRH and cGnRH-II were calculated as relative to those of  $\beta$ -actin and expressed as a percentage of either the M0 groups. The data from melatonin level, estradiol level, Levels of mRNA sGnRH and cGnRH-II and GSI were subjected to ANOVA followed by Tukey's multiple-comparisons tests. Differences were considered significant when  $P < 0.05$  [21].

## RESULT AND DISCUSSION

**Melatonin Levels:** Melatonin level at zero months were 45.51-189.83 pg/ml and in the fourth month were 5.45-23.12 pg/ml. Melatonin level in hard-lipped Barb kept under different photoperiods (14L:10D, 16L:8D and 18L:6D) decreased throughout the experimental period, using statistical methods would be showed that there is significantly different unless in the third month (Figure 2). In the first month control treatment, melatonin level of control group was higher than those of 14L:10D and 18L:6D groups ( $P < 0.05$ ). In the second month melatonin levels of 14L:10D group was higher than those 16L:8D and 18L:6D groups ( $P < 0.05$ ). In the third month, melatonin levels were not significantly different photoperiod among the groups ( $P > 0.05$ ) and in the fourth month, for control treatment had a higher melatonin level than other photoperiods treatments ( $P < 0.05$ ).

**Expression of cGnRH-II mRNA and sGnRH mRNA:** In hard lipped barb females, relative cGnRH-II mRNA expression level in four month were 0.049-1.938 (Figure 3A). The highest cGnRH-II mRNA expression (1.938) was observed 18L:6D group in fourth month significantly different ( $P < 0.05$ ). mRNA expression for 18L:6D group increased with post spawning periods ( $P < 0.05$ ). The cGnRH-II mRNA expression for other treatment photoperiods in first month and second month had non significantly different ( $P > 0.05$ ), but in third month and fourth month photoperiods 18L:6D had higher gene cGnRH-II than other photoperiods 14L:10D and photoperiods 16L:8D. ( $P < 0.05$ ).

The relative level of sGnRH mRNA expression throughout the study were 0.0037-3.832 (Figure 3B). The highest sGnRH gene expression were (3.832) were found in 18L:6D group at the third month ( $P > 0.05$ ). The sGnRH mRNA expression for photoperiods treatment in first

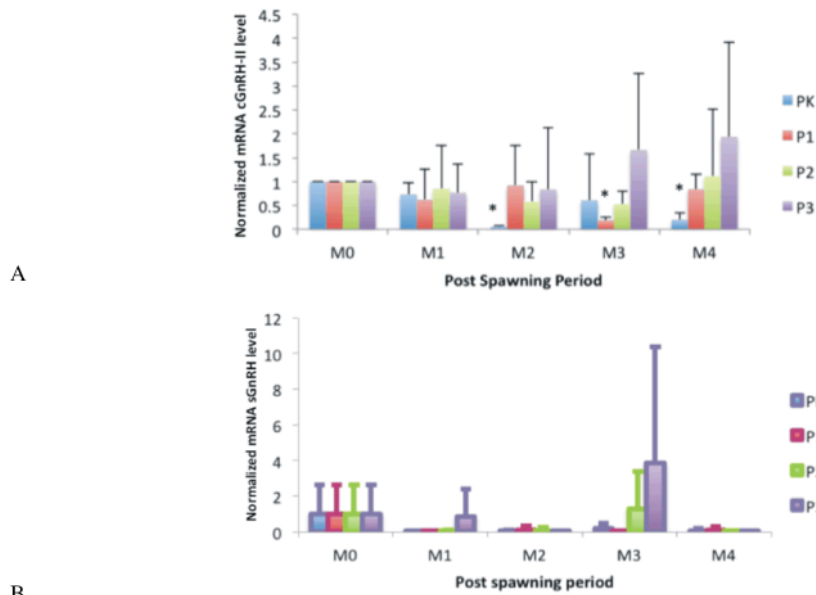


Fig. 3: mRNA levels of cGnRH-II (A) and sGnRH (B) of hard-lipped barb kept under different photoperiod for 4 month. (PK=control, P1=14L:10D, P2=16L:8D, P3=18L:6D, M=Month). (\*: Significantly different)

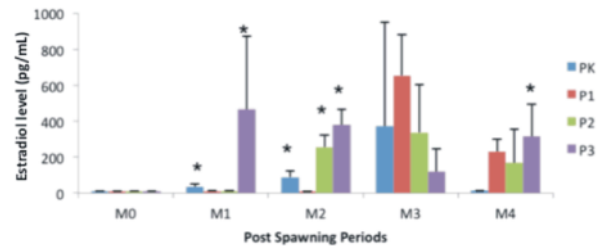


Fig. 4: Serum Estradiol Levels of hard-lipped barb kept under different photoperiod for 4 month. PK=control, P1=14L:10D, P2=16L:8D, P3=18L:6D, M=Month). (\*: Significantly different)

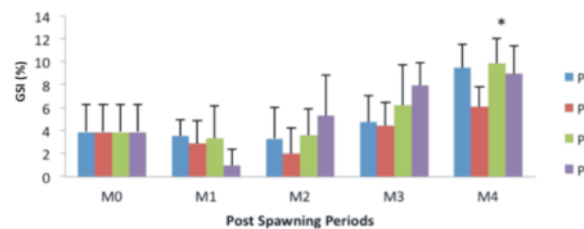


Fig. 5: GSI of hard-lipped barb kept under different photoperiod for 4 months. PK=control, P1=14L:10D, P2=16L:8D, P3=18L:6D, M=Month). (\*: Significantly different)

month until fourth month had non significantly different ( $P>0.05$ ), but in third month sGnRH gene expression in 18L:6D group at third month were higher trends than photoperiods 14L:10D and photoperiods 16L:8D ( $P>0.05$ ).

**Serum Estradiol 17 $\beta$  Levels:** Estradiol 17 $\beta$  level in zero month were 11.46-11.49 pg/ml and in the fourth months were 12.53-511.24 pg/ml (Figure 4). Estradiol level in hard-lipped Barb kept under different photoperiods



(14L:10D, 16L:8D dan 18L:6D) increased throughout the experimental period. Average estrogen 17 $\beta$  levels in third month not significantly different ( $P>0.05$ ), but for the first, second and fourth months, photoperiods 18L:6D, Estradiol level was higher than estradiol level in photoperiods 14L:10D and 16L:6D ( $P<0.05$ ).

**Gonado-Somatic Indexes (GSI):** GSI in first month were ranging from 2.25-9.95% and in the fourth month were ranging from 3.86-13.87% (Figure 5). GSI increased throughout the experimental period ( $P<0.05$ ). The highest GSI in each group indicated that gonadal development was not maximum since GSI of post spawning hard-lipped barb cultured in ponds reached  $>16\%$  [15]. Average GSI photoperiods treatment was not significantly different ( $P>0.05$ ).

The correlation GSI with Serum Estradiol 17 $\beta$  Levels ( $r: 0.57$ ) and melatonin ( $r:-0.49$ ). The same pattern was seen in cGnRH-II and sGnRH. The correlation between cGnRH-II and melatonin were relatively high ( $r = -0.781$ ) and Estradiol ( $r:-0.89$ ). Different pattern was also seen in the correlation between sGnRH and melatonin ( $r:-0.044714081$ ) and sGnRH with estradiol ( $r: 0.07925624$ ).

## DISCUSSION

In this study, changes in melatonin level, gene expression of cGnRH-II and sGnRH, Estradiol level in hard-lipped barb were analyzed to characterize the role of several neuropeptides in the control of reproduction under photoperiods manipulation. This study confirms previous results from fisheries and marine laboratory showing decrease in serum melatonin levels during photoperiods manipulation in hard-lipped barb. In addition, we report for the first time, changes in the gene expression levels of several neuropeptides in correlation with hormone secretion. Although we are aware that mRNA levels do not always match with protein levels and/or the physiological effects of the protein products, the regulation of mRNA levels provides an indication of the activity of a particular peptide neuronal system.

In this study showed that melatonin level decreased equivalent with the long photoperiod increased. This is proved that photoperiod exert its role on reproduction through pineal that integrates and conveys input from external and internal cues to the hypothalamus via melatonin level [2]. Photoperiods also regulated gene expression cGnRH-II in hard-lipped barb, the result of this research confirmed that long photoperiods enhanced gene expression cGnRH-II in hard-lipped barb, similar in

pejerey fish which treatment with longer photoperiods increased the expression of cGnRH-II gene [7]. Result of gene sGnRH expression in hard-lipped barb in this research, can be determined that long photoperiods can enhance trends of sGnRH expression in hard-lipped barb although not significantly different. Average estrogen 17 $\beta$  levels in third month not significantly different ( $P>0.05$ ), but for the first, second and fourth months, photoperiods 18L:6D, Estradiol level was higher than estradiol level in photoperiods 14L:10D and 16L:6D ( $P<0.05$ ). This is proved that photoperiods can enhance estradiol level in Nilem. For the average GSI amongst photoperiods was not significantly different ( $P>0.05$ ). Another research demonstrated that different photoperiods and water quality in carp *Catla catla* did not effect reproductive performance [22], photoperiods only influence steroidogenesis in fish. Increasing GSI in post spawning periods caused by Estradiol [6]. Normally photoperiods in tropical area was 14L:10D. Introducing an extreme photoperiods without adaptation caused stress on fish. Hard-lipped barb needed 2 month for every reproduction cycles, hence in every photoperiods studies, the first cycles was not significantly different between the treated groups [14, 23].

This study showed that melatonin level decreased every month contrary to expression cGnRH-II, Serum Estradiol levels and GSI level increased but not for gene expression sGnRH. GSI increased in line with Serum Estradiol 17 $\beta$  Levels and decreased of melatonin. The same pattern was seen in cGnRH-II and sGnRH. The cGnRH-II decreased in line with serum melatonin and increased in line with serum estradiol. There is no correlation between sGnRH and melatonin and sGnRH with estradiol. This result indicated that the melatonin can suppress gene expression cGnRH-II and alter to suppress estradiol, but not for gene expression of sGnRH. Melatonin mediated cyclical regulation of GnRH mRNA expression involve the protein kinase C and the extracellular signal-regulated kinase 1 and 2 pathways [24]. Melatonin regulated act through membrane receptors to trigger the protein kinase C pathway and 12-O-tetradecanoyl phorbol-13-acetate (TPA), a modulator of this pathway, has been shown to suppress GnRH gene expression through the promoter [25]. GnRH binds to GnRH receptor and active G protein mediated phosphorylation to protein kinase C and synthesize Gonadotrophin (GtH 1 and GtH2). GtH 2 secreted into blood vessel, to receptor in theca cell activated G protein and adenylate cyclase to phosphorylation cAMP and activation staR protein. staR protein regulated cholesterol

into inner membram mitochondria and actived enzyme cleaved chain side changed cholesterol to pregnenolon. Androgen hormone from theca cell had aromatisase enzygm in granulosa cell and transform to estrogen [26].

Oocyte development resulted in an increase in ovarian size and weight as well as the production of reproduction hormone by the ovarium [6]. In a particular condition, GSI might not altered by photoperiod but the Estradiol level was significantly affected as those in Catla catla [22] and Tilapia [14].

Previous studies in teleost showed that extended photoperiod decreased melatonin and increased gene expression cGnRH-II, gene expression of sGnRH and estradiol level. These increased was resulted from the decreased of melatonin production lead to the increased of GnRH production from hypothalamus [7, 23]. Such condition will stimulate pituitary activities in producing gonadotrophin which in tum stimulate gonadal activities including estradiol production [9]. In the contrary, short photoperiod stimulated melatonin production and suppress the hypothalamus-pituitary-gonad axis [9]. Therefore increasing photoperiod should in theory increase the reproductive activities [5].

## CONCLUSION

Photoperiod affected regulation of melatonin level, gene expression of cGnRH-II, sGnRH and estradiol level in the hard-lipped barb. The longer photoperiod decreased melatonin level, increased gene expression of cGnRH-II, but not for sGnRH and increased estradiol level.

## ACKNOWLEDGMENT

This project was funded by DP2M-DIKTI (Hibah Disertasi Doktor 2010) and Sandwich Like DIKTI 2010. Also thanks to Dr. Chio Oka and dr Supanji, SpM for study and analyzed on gene expression of cGnRH-II and sGnRH.

## REFERENCES

1. Bromage, N.R., M.J.R. Porter, Dan and C.F. Randall, 2001. The environmental regulation of maturation in farmed finfish with special reference to the role of photoperiod and melatonin. *Aquaculture*, 197: 63-98.
2. Cassone, V.M., 1998. Melatonin's role in vertebrate circadian rhythms. *Chronobiology. International*, 15: 457-473.
3. Mortehtavizavizadeh, S.A., M.Y. Feshalami and F.B. Kahkesh. 2010. Effect of GnRHα(D-ala6, Des-ala10mGnRHα) LHRHα(Des-ala10, D-(ala6)LH-RH Ethylamid) and Carp Pituitary in Artificial Propagation of Gattan, *Barbus Xanthopetrus* (Heckel, 1843). *Word Journal Of fish and Science Marines*, 2: 280-284.
4. Nagahama, Y., H. Fukuyama, H. Yamauchi, S. Matsuzaki, J. Konishi, H. Shibasaki and J. Kimura, 1996. Cerebral activation during performance of a Card Sorting Test. *Brain*, 119: 1667-1675.
5. Rodríguez, L., M. Carrillo, L. Sorbera, Y. Zohar and S. Zanuy, 2004. Effects of photoperiod on pituitary levels of three forms of GnRH and reproductive hormones in the male European sea bass (*Dicentrarchus labrax* L.) during testicular differentiation and first testicular recrudescence. *General and Comparative Endocrinol.*, 136: 37-48.
6. Yaron, Z., 1995. Endocrine control of gametogenesis and spawning induction in the carp. *Aquaculture*, 129: 49-73.
7. Miranda, L.A., C.A. Strussmann and G.M. Somoza, 2009. Effects of light and temperature conditions on the expression of GnRH and GtH genes and levels of plasma steroids in *Odontesthes bonariensis* females, *Fish Physiology Biochemical.*, 35: 101-108.
8. Luis Fabián Canosa, Norm Stacey and Richard Ector Peter, 2008. Changes in brain mRNA levels of gonadotropin-releasing hormone, pituitary adenylate cyclase activating polypeptide and somatostatin during ovulatory luteinizing hormone and growth hormone surges in goldfish, *Journal Physiology Regulation Integrated Comparative Physiology*, 295: R1815-R1821.
9. Endal, H.P., G.L. Taranger, S.O. Stefansson and T. Hansen, 2000. Effects of continuous additional light on growth and sexual maturity in Atlantic salmon, *Salmo salar*, reared in sea cages. *Aquaculture*, 191: 337-349.
10. Norberg, B., F.A. Weltzien, O. Karlsen and Dan J.C. Holm, 2001. Effects of photoperiod on sexual maturation and somatic growth in male Atlantic halibut (*Hippoglossus hippoglossus* L.). *Comparative Biochemistry and Physiology Part B.*, 129: 357-365.
11. Hansen, T., O. Karlsen, G.L. Taranger, G.I. Hemre, Holm J.C. Kjesbu and O.S. Growth, 2001. Gonadal development and spawning time of Atlantic cod (*Gadus morhua*) reared under different photoperiods. *Aquaculture*, 203: 51-67.

12. Migaud, H., P. Fontaine, P. Kestemont, N. Wanga and J. Brun-Bellut, 2004. Influence of photoperiod on the onset of gonadogenesis in Eurasian perch *Perca fluviatilis*. *Aquaculture*, 241: 561-574.
13. Yosefian, M., S.H. Najafpour, S.V. Farabi and G.D. Najavpour, 2010. Artificial Spawning and Early Development of *Acipenser persicus*. *Word Journal of Fish and Science Marines*, 2: 258-263.
14. Biswas, A.K., T. Morita, G. Yoshizaki, M. Maita and Dan T. Takeuchi, 2005. Control of reproduction in Nile tilapia *Oreochromis niloticus* (L.) by photoperiod manipulation. *Aquaculture*, 243: 229-239.
15. Wijayanti, G.E. and S.B.I. Simanjuntak Dan Sugiharto, 2004. Optimasi potensi reproduksi pada ikan nilam (*Osteochilus hasseltii* C.V.) melalui kajian gametogenesis. *Proceeding. National. Seminar. Fisheries, Diponegoro University, Central of java, Indonesia*, pp: 145-152.
16. Kahkesh, F.B., M.Y. Feshalami, F. Amiri and M. Nickpey, 2010. Effect of Ovaprim, Ovotide, HCG, LHRH-A2, LHRHA2+CPE and Carp Pituitary in Benni (*Barbus sharpeyi*) Artificial Breeding. *Global Veterinaria*, 5: 209-214.
17. Yustina Dan Arnentis, 2002. Aspek Reproduksi Ikan Kapiék (*Puntius schwangfeldi* Bleeker) di Sungai Rangau-Riau, Sumatra. *Jurnal Matematika Dan Sains*, 7: 5-14.
18. Prayogo, N.A., G.E. Wijayanti, Murwantoko, M. Kawaichi and P. Astuti, 2011. Structure and Phylogenetic of GnRH Genes of Hard-lipped Barb (*Osteochilus hasseltii* C.V.). *Middle-East Journal of Scientific Res.*, 10: 332-341.
19. Kariman, A., S.H. Shalloof and H.M.M. Salama, 2008. Investigations on Some Aspects of Reproductive Biology in *Oreochromis niloticus* (Linnaeus, 1757) Inhabited Abu-zabal Lake, Egypt. *Global Veterinaria*, 2: 351-359.
20. Marwa, M. Mazrouh and H.H. Mahmoud, 2009. Some Aspects of Reproductive Biology with Emphasis on the Effect of Pollution on the Histopathological Structure of Gonads in *Oreochromis niloticus* from Rosetta Branch, Nile River, Egypt. *World Journal of Fish and Marine Sci.*, 1: 190-198.
21. Sugiyono, 2005. *Statistika untuk penelitian*. C.V. Alfabeta. Bandung.
22. Maitra, S.K., R. Dey and S. Bhattacharya, 2005. Importance of Photoperiods in the Regulation of Ovarian Activities in Indian Mayor Carp Catla-Catla in An Annual Cycle. *Journal of Biological Rhythms*, 20: 145-158.
23. Bayarri, M.J., L. Rodríguez, S. Zanuy, J.A. Madrid, F.J. Sanchez-Vazquez, H. Kagawa, K. Okuzawa and dan M. Carrillo, 2004. Effect of photoperiod manipulation on the daily rhythms of melatonin and reproductive hormones in caged European sea bass (*Dicentrarchus labrax*). *General and Comparative Endocrinol.*, 136: 72-81.
24. Roy, D. and D.D. Belhams, 2002. Melatonin Receptor Activation Regulates GnRH Gene Expression and Secretion in GT1-7 GnRH Neurons. *The Journal of Biological Chemistry*, 277: 251-258.
25. Qingbo, T., M. Mazur and P.L. Mellon, 2005. The Protein Kinase C Pathway Acts through Multiple Transcription Factors to Repress Gonadotropin-Releasing Hormone Gene Expression in Hypothalamic GT1-7 Neuronal Cells. *Molecular Endocrinol.*, 19: 2769-2779.
26. Litwack, G. and T.J. Schmidt, 2002. *Biochemistry of Hormones II: Steroid Hormones*, in: *Textbook of Biochemistry and Clinical Correlations 5<sup>th</sup>* John Willey and Sons, pp: 959-988.



# Effect of Photoperiods on Melatonin Levels, the Expression of cGnRH-II and sGnRH Genes and Estradiols Level in Hard-Lipped Barb (Osteochilus hasselti C.V.)

## ORIGINALITY REPORT

17%	10%	14%	%
SIMILARITY INDEX	INTERNET SOURCES	PUBLICATIONS	STUDENT PAPERS

## PRIMARY SOURCES

1	pubmed.ncbi.nlm.nih.gov Internet Source	2%
2	123dok.com Internet Source	2%
3	J.E. Skjæraasen, A.G.V. Salvanes, Ø. Karlsen, R. Dahle, T. Nilsen, B. Norberg. "The Effect of Photoperiod on Sexual Maturation, Appetite and Growth in Wild Atlantic Cod (Gadus morhua L.)", Fish Physiology and Biochemistry, 2005 Publication	1%
4	www.karger.com Internet Source	1%
5	Luis Fabián Canosa, Suraj Unniappan, Richard Ector Peter. "Periprandial changes in growth hormone release in goldfish: role of somatostatin, ghrelin, and gastrin-releasing peptide", American Journal of Physiology-	1%

# Regulatory, Integrative and Comparative Physiology, 2005

Publication

6

[www.geneticsmr.com](http://www.geneticsmr.com)

Internet Source

1 %

7

"MOLECULAR CLONING OF GONADOTROPIN HORMONES I (GtH-I) AND II (GtH-II) GENES IN THE HARD-LIPPED BARB (*Osteochillus hasseltii*) AND THE EFFECT OF PHOTOPERIODS ON THE GENES EXPRESSION", BIOTROPIA, 2019

Publication

1 %

8

[etd.aau.edu.et](http://etd.aau.edu.et)

Internet Source

1 %

9

Hu, W.. "Antisense for gonadotropin-releasing hormone reduces gonadotropin synthesis and gonadal development in transgenic common carp (*Cyprinus carpio*)", Aquaculture, 20071003

Publication

1 %

10

Sijagurumayum Dharmajyoti Devi, Gopinath Mondal, Zeeshan Ahmad Khan, Hridip Kumar Sarma, Asamanja Chatteraj. " Differential gene expression and immunohistochemical localization of the key melatonin biosynthesizing enzymes in the testis of zebrafish ( ) ", Biological Rhythm Research, 2021

1 %

- 
- 11 Jin Ah Song, Heung-Sik Park, Young-Su Park, Kang Hee Kho, Cheol Young Choi. "Exogenous cortisol and red light irradiation affect reproductive parameters in the goldfish *Carassius auratus*", Fish Physiology and Biochemistry, 2021

Publication

- 
- 12 [www.unboundmedicine.com](http://www.unboundmedicine.com)
- Internet Source

- 
- 13 [etd.auburn.edu](http://etd.auburn.edu)
- Internet Source

- 
- 14 [journals.plos.org](http://journals.plos.org)
- Internet Source

- 
- 15 Churcher, Allison M, Jose Pujolar, Massimo Milan, Peter C Hubbard, Rute ST Martins, João L Saraiva, Mar Huertas, Luca Bargelloni, Tomaso Patarnello, Ilaria AM Marino, Lorenzo Zane, and Adelino VM Canário. "Changes in the gene expression profiles of the brains of male European eels (*Anguilla anguilla*) during sexual maturation", BMC Genomics, 2014.

Publication

- 
- 16 Rafael Marcial Rodríguez Pablos. "Estudio del control ambiental, hormonal y molecular de la pubertad anticipada de la lubina aplicando

17

Volonteri, M. Clara, Eleonora Regueira, M. Florencia Scaia, and Nora R. Ceballos.

"Characterization and seasonal changes in LH $\beta$  and FSH $\beta$  mRNA of *Rhinella arenarum* (Amphibia, Anura)", General and Comparative Endocrinology, 2013.

Publication

<1 %

18

[mdpi-res.com](http://mdpi-res.com)

Internet Source

<1 %

19

Richard O'Hanlon, Thomas J. Harrington.

"Similar taxonomic richness but different communities of ectomycorrhizas in native forests and non-native plantation forests", Mycorrhiza, 2011

Publication

<1 %

20

Sulaeman, U.. "Solvothermal synthesis and photocatalytic properties of chromium-doped SrTiO $_3$  nanoparticles", Applied Catalysis B, Environmental, 20110609

Publication

<1 %

21

[journal.ugm.ac.id](http://journal.ugm.ac.id)

Internet Source

<1 %

22

[scholar.sun.ac.za](http://scholar.sun.ac.za)

Internet Source

<1 %

23 Albert K Imsland. "Growth, feed conversion efficiency and growth heterogeneity in Atlantic halibut (*Hippoglossus hippoglossus*) reared at three different photoperiods", Aquaculture Research, 8/2006  
Publication

---

24 e-sciencecentral.org  
Internet Source

---

25 krishikosh.egranth.ac.in  
Internet Source

---

26 "Oral Abstracts", The Aging Male, 2009  
Publication

---

27 Retno Supriyanti, Muhammad Rifqi Kurniawan, Yogi Ramadhani, Haris Budi Widodo. "Calculating the area of white spots on the lungs of patients with COVID-19 using the Sauvola thresholding method", International Journal of Electrical and Computer Engineering (IJECE), 2023  
Publication

---

Exclude quotes On

Exclude matches

< 5 words

Exclude bibliography On