

Compounds detection and inhibition activity of chloroform and ethyl acetate extracts of *Schizophyllum commune* on some cancer cell types

by Aris Mumpuni

Submission date: 25-Mar-2023 04:26PM (UTC+0700)

Submission ID: 2046142853

File name: 7001-Article_Text-33311-2-10-20201201.pdf (530.68K)

Word count: 5430

Character count: 28636

Compounds detection and inhibition activity of chloroform and ethyl acetate extracts of *Schizophyllum commune* on some cancer cell types

NURAENI EKOWATI*, ARIS MUMPUNI, NUNIEK INA RATNANINGTYAS, ARDHINI RIN MAHARNING

Faculty of Biology, Universitas Jenderal Soedirman, Jl. Dr. Soeparno 63, Purwokerto Utara, Banyumas 53122, Central Java, Indonesia.

Tel. +62-281-638794 Fax: +62-281-631700, *email: nuraeniekowati29@gmail.com

Manuscript received: 22 October 2020. Revision accepted: 28 November 2020.

Abstract. Ekowati N, Mumpuni A, Ratnaningtyas NI, Maharning A. 2020. Compounds detection and inhibition activity of chloroform and ethyl acetate extracts of *Schizophyllum commune* on some cancer cell types. *Biodiversitas* 21: 5865-5871. *Schizophyllum commune* Fr. is a potential fungus utilized as a drug, including a cancer drug expectant. In Indonesia, the fungus' capability to suppress the growth of certain types of cancer cells has not been widely reported. The purposes of this study were (i) to determine the bioactive compound group from *S. commune* using organic solvents chloroform and ethyl acetate, (ii) to determine the IC₅₀ values of *S. commune* bioactive compounds using cancer cell lines HeLa, MCF7, T47D and WiDr, (iii) to find out the mechanism of apoptosis. The research was carried out experimentally using a pure culture of four types of cancer cell lines. Anticancer activity test was conducted by a cytotoxic test using MTT [3-(4,5-dimethylthiazol-2-yl)-2,5-diphenyl tetrazolium bromide], and apoptosis test. Data analysis was performed with linear regression analysis, and the apoptosis test was analyzed descriptively. The results showed that the bioactive compounds produced by *S. commune* are alkaloids, terpenoids, and flavonoids. *S. commune* bioactive compounds potentially inhibit the four cancer cell lines used with IC₅₀ values ranging from 5.44 to 420.48 µg/mL. Best result was obtained from *S. commune* extract of chloroform in T47D cells with IC₅₀ = 5.44 µg/mL and are able to induce apoptosis.

Keywords: Bioactive compounds, cancer cell lines, cytotoxic test, *Schizophyllum commune*

INTRODUCTION

The global awareness of cancer as the second-largest causal agent of death in people of various ages and backgrounds has led to many research efforts and clinical studies in the fight against the disease. According to Cancer Research UK, 17 million new cases have been reported, and among them, 9.6 million patients ended up to death in 2018. If it continues at such a rate, by 2040, there will be 33.5 million new cancer patients each year. Unprecedented advances in synthetic chemistry, omics studies to pinpoint target genes/proteins, and efficient drug delivery systems have made it easier for researchers to develop phytochemicals as efficient anticancer drugs (Ashraf 2020). Torre et al. (2015) state that the continuing magnitude of the cancer problem and the failure of conventional chemotherapy of the advanced invasive disease to affect the significant reduction in the mortality rates for the common forms of epithelial malignancies such as carcinoma of lung, colon, breast, prostate, etc., indicate that new approaches to the control of cancer are critically needed.

Cervical cancer, breast cancer, and colon cancer are malignant types of cancer with a high mortality rate. Chemotherapy treatment is a method often used but have not provided satisfactory results. Compounds from plants and fungi can be used to inhibit the growth of cancer cell lines. Recently, much attention has been focused on polysaccharides and secondary metabolites from natural sources such as bacteria, fungi, algae, and plants (Moharib et al. 2014). Khatun et al. (2012) stated that Basidiomycete

fungi (mushrooms) are a gift that has excellent prospects as food and medicinal purpose. Some researchers had shown that mushrooms can produce new secondary metabolites and have a broad spectrum of biological activities because they have diverse chemical structures.

Schizophyllum commune Fr. is one type of macroscopic fungi that could potentially produce bioactive compounds. *S. commune* has long been known as a fungus that can be used as a medicine, although its properties are not certainly known. This fungus is a Phylum Basidiomycota member, living wildy in nature. Determining its potential as an anticancer can be done by an in-vitro test using cancer cells, including the cancer cell lines HeLa, MCF7, T47D, and WiDr. Assay on *S. commune* mushroom bioactive compounds on cancer cell lines until now has never been done.

The potential of macroscopic fungi as a medicinal ingredient has been reported by Ekowati et al. (2017), namely *Pleurotus ostreatus*, which is a member of the Basidiomycota capable of producing secondary metabolites anticancer activity. It was also reported that in the species, there are 23 types of secondary metabolites have been identified. Ethyl acetate extract of *P. ostreatus* isolated from Madiun Indonesia showed the best results with IC₅₀ = 107.59 µg/mL. HeLa cell lines proliferation kinetics analysis showed that the application of bioactive compounds 100 µg/mL increased the death of HeLa cell lines and incubation time length. Hikam et al. (2019) reported that the *Auricularia auricula* mycelium's chloroform extract showed the best results with IC₅₀ = 264.87 µg/mL. An important finding obtained after the

double staining process was that chloroform extract of *A. auricula* could induce HeLa cell lines death by apoptosis. The search for new anticancer drugs and other medicinal substances from higher Basidiomycetes and the study of these edible mushrooms' medicinal values have been of great interest. Thus, several authors have combined the use of mushrooms for both nutritional and medicinal purposes.

The purposes of this study were (i) to determine the bioactive compound group from *S. commune* using organic solvents chloroform and ethyl acetate, (ii) to determine the IC₅₀ values of *S. commune* bioactive compounds using cancer cell lines HeLa, MCF7, T47D, and WiDr, (iii) to find out the mechanism of apoptosis

MATERIALS AND METHODS

The research was conducted in Mycology Laboratory, Faculty of Biology, University of General Soedirman, Purwokerto, Indonesia and Parasitology Laboratory, Faculty of Medicine, Universitas Gadjah Mada, Yogyakarta, Indonesia.

Materials

Materials used were: *Schizophyllum commune*, pure culture of cancer cell lines (HeLa, MCF7, T47D and WiDr cells), Potato Dextrose Agar, dimethylsulfoxide (DMSO), chloroform, sodium dodecyl sulfate, medium 25, Rosewell Park Memorial Institute (RPMI) 1640 (Sigma), Dulbecco's Modified Eagle Medium (DMEM), fetal bovine serum (FBS) 10% (v / v) (Gibco), reagent stopper Acid-Isopropanol, penicillin-streptomycin 1% (v / v) (Gibco), hepes (1 gma), fungison 0.5% (v / v) (Gibco), 70% ethanol, [3- (4,5-dimethyliazol-2-yl) -2,5-diphenyl tetrazolium bromide] (MTT kit, Sigma), object glass, acridine orange-ethidium bromide.

The tools used were glassware, Bunsen burner, inoculation tools, laminar airflow, incubator cabinet, oven, freeze dryer, vacuum pump, orbital shaker, analytical balance, refrigerator, incubators CO₂ 5%, Inverted Microscope, Fluorescent Microscope, hemocytometer, Pasteur pipette, 96-well plate (Nunc) 24-well plate (Iwaki), coverslip of 13 mm diameter (Thermanox), ELISA Reader, micropipette, cell counter, centrifuge Sorvall MC 12V (Dupont), 15 mL centrifuge tube, and autoclave.

Methods

Preparation of *S. commune* extract

The dry mycelium was extracted by maceration method. The dry mycelium was washed, then added with 25 mL of chloroform solvent and macerated for 1x24 hours, after 24 hours the mycelium was separated from the solvent. The separated mycelium was extracted again with chloroform solvent for a second time and remacerated for 1x24 hours then the mycelium was separated again from the solvent. The mycelium that was separated from the chloroform solvent was extracted again using ethyl acetate solvent in the same way. The separation process is done by filtering using filter paper. The results of the first and second extraction are mixed, then evaporated until a thick extract is obtained.

Identification of secondary metabolite compound group (Cai 2014; Kumar et al. 2013)

The detection of bioactive compounds of mycelium extract *S. commune* was carried out by Thin Layer Chromatography (TLC) to determine the presence or absence of alkaloid, terpenoid, and flavonoid compounds. Silica gel F254 thin layer chromatography plates were cut to size 10 x 10 cm, then outlined the upper and lower borders. The *S. commune* extract was dotted at the center of the lower boundary as much as 8 µl, then allowed to dry and put into a saturated chamber with the mobile phase.

In alkaloid identification, the stationary phase used was silica gel F₂₅₄ and the mobile phase used for chloroform extract was methanol: hexane: glacial acetic acid (8: 2: 0.5), and for ethyl acetate extract was methanol: hexane: glacial acetic acid (8: 1: 0.5). The eluted spots were detected by spraying Dragendroff reagent and then heated at 100°C for 5 minutes. The presence of alkaloids is indicated by the formation of yellow or orange patches.

In terpenoid identification, the stationary phase used was silica gel F₂₅₄, and the mobile phase for chloroform and ethyl acetate extracts was: n-hexane: ethyl acetate: glacial acetic acid (8: 2: 0.5). The eluted spots were detected by spraying vanillin-sulfuric acid and then heated at 100°C for 5 minutes. The formation of blackish-purple spots indicates the presence of terpenoids.

In identifying flavonoids, the stationary phase used was silica gel F₂₅₄, and the mobile phase for chloroform and ethyl acetate extracts was n-hexane: ethyl acetate: glacial acetic acid (8: 2: 0.5). The eluted spots were detected by spraying AlCl₃ reagent and then seen on 366 nm UV light. The formation of blue-green spots indicates the presence of flavonoids. For each eluted spot, the Retardation Factor (R_f) value is calculated with the following formula:

$$\text{Retardation Factor (Rf)} = \frac{\text{The distance travelled by the compound}}{\text{The distance moved by the solvent surface}}$$

Anticancer activity assay was done by using four types of cancer cells, i.e., cervical cancer cells (HeLa), breast cancer cells (MCF7 and T47D), and colon cancer cells (WiDr). The method used was experimental by examining multiple concentrations of the extract in cell culture, cytotoxic examination elaborated secondary metabolites extract treatment with concentration (in µg/mL) 0; 31.25; 62.50; 125; 250; 500 and 1,000, respectively. The variables measured were the living cells and the IC₅₀ (Inhibition Concentration 50), cancer cell lines (HeLa, MCF7, T47D, and WiDr), and the mechanism of cell death through apoptosis test.

Anticancer test procedures for several types of cancer cell lines (Meerloo 2011; Ackermann and Tardito 2019)

Preparation of culture media for cancer cell lines (RPMI and DMEM). Preparation and multiplication of HeLa, MCF7, T47D, and WiDr cell lines. HeLa, MCF7, and T47D cell lines were cultured using RPMI media and WiDr cell lines were cultured using DMEM media. Dilution of secondary metabolites extract of *S. commune* each treatment with concentration (in µg/mL) 0; 31.25; 62.50; 125; 250; 500 and 1,000. Cytotoxic activity assay of

each cancer cell line.

Cytotoxicity assay with MTT method [3- (4,5-dimethylthiazol -2-yl) -2,5-diphenyl tetrazolium bromide]. The number of cells of each of these cancer cell lines multiplied and counted as much as 10^4 per mL. Cancer cell lines in the medium RPMI or DMEM that has been calculated are cultured in 96 wells plate, incubated in an incubator cabinet with a stream of 5% carbon dioxide at 37°C for 24 hours. After incubation for 24 hours, the cells' growth was observed; if the cells normally live (healthy), the assay was conducted using extracts of bioactive compounds (chloroform and ethyl acetate extracts) from *S. commune*. The chloroform and ethyl acetate extracts were prepared and dissolved in the medium to be used at concentrations (in $\mu\text{g/mL}$) 0; 31.25; 62.50; 125; 250; 500 and 1,000. Each of the 100 mL concentrations is taken and put in the plate, which already contains cells, each with three replicates, plus control cells without extracting and extracting media without cells.

Furthermore, the cells were incubated in an incubator with a 5% carbon dioxide stream at 37°C for 24 hours. At the end of incubation, cell morphology was observed using an inverted microscope and photographed for each treatment. In each of the wells was added 10 mL of MTT 2.5 $\mu\text{g/mL}$ in PBS. The 96 well plates were incubated in an incubator with a stream of 5% carbon dioxide at 37°C for 4 hours. After 4 hours, the MTT reaction was stopped by adding 100 mL reagent-stopper Acid Isopropanol, then incubated 12 hours at room temperature. Absorption of color was read by ELISA reader at a wavelength of 550 nm. Results of absorbance are converted in life percentages of HeLa cells; thus, the examined compounds' IC_{50} values would be obtained.

DNA staining proceeded with acridine orange/ethidium bromide. Coverslip was grown into a 24-well plate, and the cells are distributed on it, incubated in an incubator with a stream of 5% carbon dioxide at 37°C for 24 hours. The number of cells required for the apoptosis test was 5×10^4 cells / well (5×10^4 cells / 1000 μL media). Observations mechanisms of cell lines death (by apoptosis and necrosis) are done with Fluorescent Microscope.

Data analysis

Cytotoxicity test data in the form of absorption responses (absorbance) is converted into a percent of the life of cancer cells by the following formula:

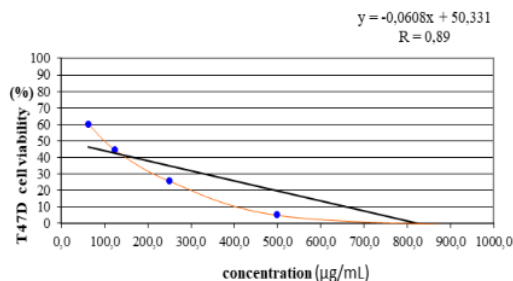


Figure 1. T47D cell viability by chloroform extract of *Schizophyllum commune* for 24 hours, with the value $\text{IC}_{50} = 5,44 \mu\text{g/mL}$

$$\% \text{ of living cell} = \frac{\text{absorbance of treatment} - \text{absorbance of media control} \times 100\%}{\text{absorbance of control cells} - \text{absorbance of media control}}$$

From these results the IC_{50} (Inhibition Concentration 50) was calculated using linear regression analysis

RESULTS AND DISCUSSIONS

The results showed that *S. commune* could produce bioactive compounds that could inhibit the growth of HeLa, MCF7, T47D, and WiDr cells line, with the percentage of inhibition varied. Cytotoxic test results are presented in Table 1.

The results of IC_{50} values for some cancer cell lines ranged from 5.44 to 420.48 $\mu\text{g/mL}$. Chloroform extract showed the smallest IC_{50} values for all four types of cancer cells line. This indicates that bioactive compounds in chloroform extract are more potent in inhibiting the growth of cancer cells. Types of cell lines that most sensitive to bioactive compounds from *S. commune* is T47D cell line with $\text{IC}_{50} = 5.44 \mu\text{g/mL}$. T47D cell lines, which are breast cancer cells, are often used to test cytotoxic in vitro. IC_{50} value obtained is relatively low and has the potential to be developed. The smaller the IC_{50} value indicates the more active extracts that are used to kill cancer cell lines. Morris et al. (2017) stated that *Pleurotus* has the potential to inhibit NB4 human leukemia cells, at a concentration of 200 $\mu\text{g/mL}$, by 82% and also stimulate NB4 cell apoptosis.

Viability chart/graph of T47D cancer cell lines treated with extracts of chloroform, and ethyl acetate *S. commune* is presented in Figures 1 and 2.

Table 1. IC_{50} values in the bioactive compound of *Schizophyllum commune* cytotoxic test using HeLa, MCF7, T47D, and WiDr cells line

Kind of extract	IC_{50} value of cancer cell line types ($\mu\text{g/mL}$)			
	HeLa cell	T47D cell	MCF7 cell	WiDr cell
Chloroform	34.48	5.44	340.41	19.44
Ethyl acetate	57.66	15.26	420.48	252.48

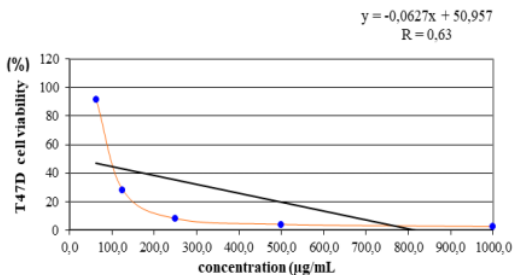


Figure 2. T47D cell viability by ethyl acetate extract of *Schizophyllum commune* for 24 hours, with the value $\text{IC}_{50} = 15,26 \mu\text{g/mL}$

The regression analysis (Figures 1 and 2) showed that the IC_{50} value of chloroform and ethyl acetate extract is relatively low, i.e., below 100 $\mu\text{g/mL}$. Cytotoxic assay results showed that the increasing levels of bioactive compounds of *S. commune* extract led to a decrease in the percentage of living T47D cell lines. This suggests that the bioactive compounds of *S. commune* are able to kill T47D cell lines due to higher levels of extract (dose-dependent). Liu et al. (2014) reported that the IC_{50} for GNM oral cancer cell lines (squamous cell carcinoma cell lines) is 281.9 ($\mu\text{g/mL}$). Cancer cell lines died by apoptosis mechanism, and the apoptosis percentage increased with the increasing concentrations of the extract. The apoptosis mechanism is proceeded by the inhibition of mitochondrial membrane permeability through the Bax protein's action.

Anticancer experiments with bioactive compound of *Inonotus obliquus* have been conducted; triterpenoids from the extract of *I. obliquus*, especially Inotodiol, can dramatically inhibit the walker 256 carcinosarcomas, MCF-7 human mammary adenocarcinoma, and leukemia cells P388. Thus, most bioactive substances from mushrooms have been reported to exert their anticancer activity by blocking cell cycle progression and triggering tumor cell apoptosis (Song et al. 2013). The MTT test results showed 200 $\mu\text{g/mL}$ of crude ethanol extract significantly inhibited proliferation of KKKU-M213 by 50% compared to the effect on the proliferation of KKKU-M213 cells (Menakongka et al. 2019). The ethyl acetate extract of *Aspergillus niger* inhibited colon cancer cells with $IC_{50} = 20.80 \mu\text{g/mL}$ (Arifni et al. 2017). Hikam et al. (2019) reported that chloroform extract of *Auricularia auricula* mycelium showed the best results with $IC_{50} = 264.87 \mu\text{g/mL}$.

According to Meiyanto et al. (2008), IC_{50} values below 100 $\mu\text{g/mL}$ test showed that the extract has potential as bioactive metabolites that can be used as an agent for cancer chemoprevention. Research has been done by Meiyanto et al. (2008) showed that the ethanol extract of betel nut (*Areca catechu*) inhibits breast cancer cells (MCF-7) with IC_{50} of 77 $\mu\text{g/mL}$, and the comparison compound arecoline is 180 $\mu\text{g/mL}$. Faridur et al. (2010)

found out the effect of the extract of *S. commune* on the viability of cancer cells; besides observed using the ELISA Reader to count the number of living cells, cell morphology was also observed using an inverted microscope. Cell morphology is presented in Figure 3.

Figure 3.A shows the T47D healthy cells; the cells appear normal and attached to the base medium. Figure 3B shows the morphology of T47D cell lines that are not normal, showed damage T47D cell lines, the cell has changed shape and seemed intact, into a round shape, and cell shrinkage occurs. Cell lines appear abnormal and split into small dots. According to Ekowati et al. (2017), as a result of the extract of *Pleurotus ostreatus*, cancer cells die through apoptosis and necrosis mechanisms; however, the mechanism of apoptosis is more dominant.

The results of the next study were to observe the mechanism of cell death by apoptosis. Observation of the apoptotic mechanism was carried out by staining acridine orange-ethidium bromide (double staining). The dead cell lines will turn orange because the ethidium bromide dye enters the dead cells and spreads throughout the cells so that they are orange. In contrast, the living cells are green because the ethidium bromide dye cannot penetrate healthy cells. The image of cell staining can be seen in Figure 4.

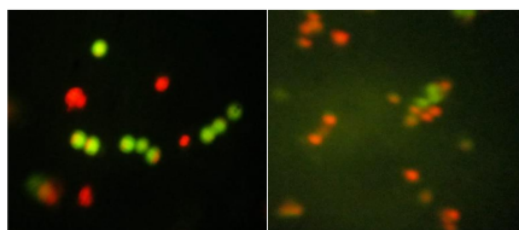
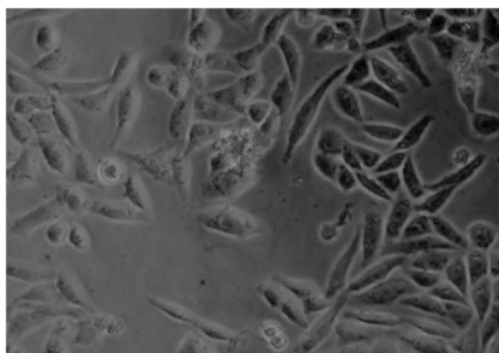
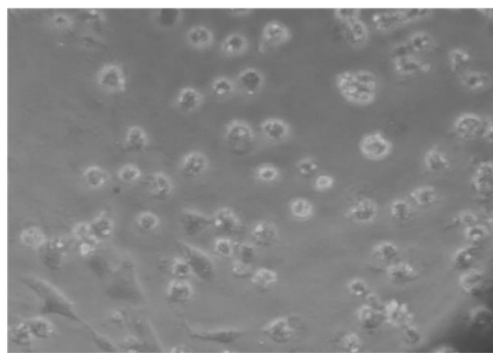


Figure 4. T47D cell lines morphology with acridine orange-ethidium bromide staining to show apoptotic cell lines death. Living cells (green), dead cells/apoptosis (orange)



A



B

Figure 3. Morphology of T47D cell of cytotoxic test results. A. T47D healthy cells (normal), B. T47D abnormal cells as the effect of the *Schizophyllum commune* chloroform extract with a concentration of 31.25 $\mu\text{g/mL}$

The dead cells fluoresce orange; this indicates a loss of membrane permeability [9] some cells due to exposure to the extract. As a result, ethidium bromide can enter cells and cause orange fluorescence to indicate cell line death. According to Brady (2007), apoptosis is a programmed cell death that causes an inflammatory reaction, whereas necrotic cell death can cause inflammatory responses in the body. Lee et al. (2015) stated that the ethanol extract of the fungus *Cordyceps militaris* could inhibit colon cancer cells' growth through a mechanism of inhibition of cell cycle at the G2/M phase increases apoptosis and expression of p53 gene. Ethanol extract of *C. militaris* 300 µg/mL can increase apoptosis by 22.5%.

HeLa cell lines treated with 150 µg/mL of the ethanolic extract resulted in more round, skinny, and membrane blabbing. The dead cells and cell debris were also observed. The cells treated with 150 µg/mL of ethyl acetate extract and water extract, separately, were similar to the fate of HeLa cells. The other two cell lines (SiHa and CaSki), when exposed to an earlier concentration of these extracts at 24 h, showed the same trends. All three types of cancer cells treated with Adriamycin (positive control) became round-shaped, while many cells were dead (Ghosh 2020).

Detection of secondary metabolites produced by *Schizophyllum commune* mycelium

Mycelia of *S. commune* was extracted using chloroform and ethyl acetate as solvents. The compounds in the extract compounds were analyzed by thin-layer chromatography (TLC) using several reagents for alkaloids, terpenoids, and flavonoids. Thin-layer chromatography is performed several times using various mobile phases with different polarity levels to obtain a solvent that can provide adequate separation and spotting. The TLC results are presented in Table 2.

Based on Table 2, the results [22] the detection of bioactive compounds by TLC on chloroform and ethyl acetate extracts of *S. commune* for all treatments showed positive results for the presence of alkaloids, terpenoids, and flavonoids. Based on the research results, *S. commune* mushrooms cultured at pH 4, pH 5, pH 6, and pH 7 were able to produce alkaloids, terpenoids, and flavonoids. The growth of *S. commune* at pH 4, pH 5, pH 6, and pH 7 did not show any difference in the types of secondary metabolites produced. The results of this study showed the best growth of *S. commune* mycelium was at pH 6 with an incubation time of 25 days, which resulted in a dry mycelium weight of 0.61 g/100 mL and the presence of secondary metabolites of the alkaloid, terpenoid, and flavonoid groups. According to Abo-Elmag (2014), bioactive compounds that are not found at too extreme pH can occur due to delayed metabolite production due to inhibition of mycelium growth.

The production of secondary metabolites in fungi is also influenced by the growth medium used. The medium used in this study was Mushrooms Complete Medium. According to Teoh & Don (2012), Rodriguez et al. (2018), sources of carbon, nitrogen, and micronutrients such as KH₂PO₄, Ca₂HPO₄, and MgSO₄·7H₂O in the medium influence the production of secondary metabolites. Carbon

is the primary source of metabolic processes, nitrogen plays a role as a component of amino acids, while micronutrients are needed as enzyme cofactors for metabolic processes.

The TLC method's detection of secondary metabolites of the alkaloid group using Dragendorff reagent showed positive results indicated by yellow spots. Alkaloid detection results showed that *S. commune* mycelium was positive for alkaloids. The Rf value of the alkaloid compounds group can be seen in Table 3.

According to Kumar et al. (2013), a positive interpretation of alkaloids is characterized by yellow to orange spots after the plate is sprayed with Dragendorff's reagent. The Rf value of alkaloid detection results obtained by TLC can be seen in Table 3. The results obtained are in line with the research of Teoh et al. (2017) that the *S. commune* mushroom extract was positive for alkaloids. Filip et al. (2019) reported that *S. commune* produces an alkaloid compound, namely sc21communin, which can inhibit cervical cancer cells, it was characterized as a cytotoxic pigment with potential anticancer activity against murine lymphoma.

TLC's deterioration of the secondary metabolites of the terpenoid group was carried out using a vanillin-sulfuric acid reagent. It showed positive results indicated by the presence of blackish-purple spots. The Rf value of the Terpenoid group compounds can be seen in Table 4.

Table 2. Detection of alkaloid, terpenoid and flavonoid compounds of *Schizophyllum commune*

Treatment	Dragendorff reagent		Vanillin-sulfuric acid		AlCl ₃ reagent	
	Alkaloid group yellow color		Terpenoid group violet-blackish color		Flavonoid group blue-green color	
	A	B	A	B	A	B
pH 4	+	+	+	+	+	+
pH 5	+	+	+	+	+	+
pH 6	+	+	+	+	+	+
pH 7	+	+	+	+	+	+

Note: +: Detected, -: not detected (-), A. Chloroform solvent, B. Ethyl acetate solvent

Table 3. Rf value of alkaloid group compounds

Treatment	Alkaloid Rf value	
	Chloroform	Ethyl acetate
pH 4	0.75	0.81
pH 5	0.56	0.81
pH 6	0.81	0.88
pH 7	0.75	0.88

Table 4. Rf value of terpenoid group compounds

Treatment	Terpenoid Rf value	
	Chloroform	Ethyl acetate
pH 4	0.53; 0.68; 0.94	0.94
pH 5	0.063; 0.44; 0.56; 0.69; 0.94	0.75; 0.94
pH 6	0.063; 0.44; 0.56; 0.69; 0.94	0.75; 0.94
pH 7	0.063; 0.13	0.94

Table 5. Rf value of flavonoid compounds

Treatment	Flavonoid Rf value	
	Chloroform	Ethyl acetate
pH 4	0.69	0.93
pH 5	0.62	0.93
pH 6	0.62	0.93
pH 7	0.69	0.93

The terpenoid detection results showed that the chloroform and ethyl acetate extracts of *S. commune* were positive for containing terpenoids. A positive result is indicated by a change in the color of the spots to blackish purple after spraying the plates with vanillin-sulfuric acid. The Rf value obtained from the detection of terpenoid compounds can be seen in Table 4. Ivanova (2014) stated that terpenoid is any of a class of hydrocarbons that consist of terpenes attached to an oxygen-containing group. In turn, the terpene is any form of hydrocarbons class consisting of two or more isoprene units joined together. Numerous investigations are devoted to the cytotoxic activity of basidiomycete *Ganoderma lucidum* triterpenoids (containing six isoprene units). More than 150 triterpenoids were isolated from the fruiting bodies of the genus *Ganoderma*. Arifni et al. (2017) stated that terpenoids (1,7,7-trimethyl-Bicyclo [2.2.1] heptane-2-one), alkanes (1,3-dimethyl-1-cyclohexene), terpenes (α , α , 4- trimethyl- (S) -3-cyclohexene-1-methanol) has potential for colonic anticancer (WiDr Cancer Cells).

The detection of secondary metabolites of the flavonoid group, which was also carried out by TLC using AlCl_3 reagent, showed positive results indicated by greenish-blue spots when viewed in 366 nm UV light. The Rf value of the flavonoid class compounds can be seen in Table 5.

The flavonoid detection results showed that the chloroform and ethyl acetate extracts of *S. commune* were positive for flavonoids. A positive effect is indicated by a greenish-blue spot after the plate is sprayed with AlCl_3 reagent observed in 366 nm UV light. Yao et al. (2016) stated that five phenolic acids identified from *S. commune* extracts in the present study included vanillic acid, *m*-hydroxybenzoic acid, *o*-hydroxybenzoic acid, 3-hydroxy-5-methyl benzoic acid, and *p*-hydroxybenzoic acid. Patel and Goyal (2012) reported that bioactive metabolites class of terpenoids, steroids, phenolics, flavonoids, and alkaloids are potential anticancer compounds.

The bioactive compounds produced by *S. commune* are terpenoids, flavonoids, and alkaloids. *S. commune* potentially inhibits the four cancer cell lines used with IC_{50} values ranging from 5.44 to 420.48 $\mu\text{g/mL}$ and the four cancer cell lines were died by apoptosis. Best results are obtained from the chloroform extract of *S. commune* in T47D cells with $\text{IC}_{50} = 5.44 \mu\text{g/mL}$. Cell cycle testing is necessary to determine the inhibition of cell lines replication.

ACKNOWLEDGEMENTS

The author's gratitude goes to the Unsoed Research and Community Service Institute (LPPM), which has provided research funds through the Riset Institut Unsoed (RIU) scheme in 2019; the author also thanks to the LPPM staff who have provided facilities, information, and cooperation, as well as the Dean of the Faculty of Biology Unsoed who have permitted this study.

REFERENCES

- Abdullah H. 2014. Evaluation and Optimization of Antioxidant Potentiality of *Chaetomium madrasense* AUMC 9376. J Genet Eng Biotechnol 12: 21-26.
- Ackmann T, Tardito S. 2019. Cell culture medium formulation and its implications in cancer metabolism. Trends Cancer 5 (6): 329-332.
- Arifni FR, Hasan AE, Hasim, Julistiono H, Husnawaty, Bermawie N, Riyanti EI. 2017. Anticancer activities of endophytic fungi isolated from soursoop leaves (*Annona muricata* L.) against WiDr cancer cells. Ann Res Rev Biol 18 (5): 1-11.
- Ashraf MA. 2020. Phytochemicals as potential anticancer drugs: time to ponder nature's bounty. BioMed Res Intl 2020: 1-7. DOI: 10.1155/2020/8602879.
- Biswas G, Sarkar S, Acharya K. 2010. Free radical scavenging and antimutagenic activities of the extracts of *Astragalus hygrometricus* (Pers.) Morg. Latin Am J Pharm 29 (4): 549-553.
- Brady HJM. 2007. Apoptosis Methods and Protocols. Humana Press Inc., Totowa, NJ.
- Cai L. 2014. Current Protocols Essential Laboratory Techniques - Thin Layer Chromatography. University of South Carolina, Columbia, NC. DOI: 10.1002/9780470089941.e0603s08.
- Ekowati N, Mumpuni A, Muljowati JS. 2017. Effectiveness of *Pleurotus ostreatus* extracts through cytotoxic test and apoptosis mechanism of cervical cancer cells. Biosaintifika 9 (1) 48-155.
- Faridur RM, Rezaul KM, Farhadul IM, Rowshanul HM, Toffazal HM. 2010. Phytochemical and cytotoxic investigation and oyster mushroom (*Pleurotus ostreatus*). Intl Res J Pharm 1 (1): 342-345.
- Filip R, Shaw T, Nishida A, and Pezacki JP. 2019. Fungal natural alkaloid schizocommunin activates the aryl hydrocarbon receptor pathway. Med Chem Commun 10: 985-990.
- Ghosh SK, Sanyal T, Bera T. 2020. Anticancer activity of solvent extracts of *Hexagonia glabra* against cervical cancer cell lines. Asian Pac J Cancer Prev 21 (7): 1977-1986.
- Hikam AR, Ekowati N, Hernayanti. 2019. The cytotoxic and apoptosis effects of chloroform extracts of *Auricularia auricula* on cervical cancer cells. Biosaintifika 11 (1): 32-38.
- Ivanova TS, Krupodorova TA, Barshteyn VY, Artamonova AB, Shlyakhovenko VA. 2014. Anticancer substances of mushroom origin. Exp Oncol 36 (2): 58-66.
- Khatun S, Islam A, Cakilcioglu U, and Chatterjee NC. 2012. Research on mushroom as a potential source of nutraceuticals: a review on Indian perspective. Amer J Exp Agric 2 (1): 47-73.
- Kumar S, Jyotirmayee K, Sarangi M. 2013. Thin Layer Chromatography: A tool of biotechnology for isolation of bioactive compounds from medicinal plants. Intl J Pharm Sci Rev Res 18 (1): 126-132.
- Lee HH, Lee S, Lee K, Shin YS, Kang H, and Cho H. 2015. Anticancer effect of *Cordyceps militaris* in human colorectal carcinoma RKO cells via cell cycle arrest and mitochondrial apoptosis. Daru J Pharmaceut Sci 23 (35): 1-8.
- Liu RH, Chen S, Lu LM, Tsai W, Tsai C, Yang C, and Tzeng YM. 2014. Selective apoptotic cell death effects of oral cancer cells treated with destruxin B. I. BMC Compl Altern Med 14 (207): 1-10.
- Meerloo JV. 2011. Cell sensitivity assays: the MTT assay. Cancer cell culture: methods and protocols. Methods in Molecular Biology. Amsterdam University Medical Center Amsterdam, Netherlands.
- Meiyanto E, Susidarti RA, Handayani S, Rahmi F. 2008. Ethanolic extract of areca catechu (*Areca catechu* L.) seeds is able to inhibit proliferation and stimulate apoptosis of MCF-7 cells. Indon Pharma Mag 19 (1): 12-19.

- Menakongka A, Ruaengsritanyakij S, Sripayak S, Suthiphongchai T. 2019. Antiproliferation and anti-migration of *Schizophyllum commune* extract on Human Cholangiocarcinoma Cell Line. *Vajira Med J J Urban Med* 63 (5): 325-335.
- Moharib SA, Maksoud NAL, Ragab HM, and Shehata MM. 2014. Anticancer activities of mushroom polysaccharides on chemically induced colorectal cancer in rats. *J Appl Pharmaceut Sci* 4 (7): 54-63.
- Morris HJ, Beltrán Y, Llauradó G, Batista PL, Perraud-Gaime I, García N, Moukha S, Bermúdez RC, Cos P, Hernández E, Díez JC. 2017. Mycelia from *Pleurotus* sp. (oyster mushroom): a new wave of antimicrobials, anticancer and antioxidant bio-ingredients. *Intl J Phytocos Nat Ingred* 4 (3): 1-9.
- Patel S, Goyal A. 2012. Recent developments in mushrooms as anticancer therapeutics: a review. *Biotech* 2: 1-15.
- Rodríguez AR, Carmona NM, Villafan BR, Koirala N, Rocha D, Sanchez S. 2018. Interplay between carbon, nitrogen, and phosphate utilization in the control of secondary metabolite production in *Streptomyces*. *Antonie van Leeuwenhoek* 111 (5): 761-781.
- Song FQ, Liu Y, Kong XS, Chang W, Song G. 2013. Progress on understanding the anticancer mechanisms of medicinal mushroom: *Inonotus obliquus*. *Asian Pacific J Cancer Prev*, 14 (3): 1571-1578.
- Teoh YP, Don MM, Ujang S. 2017. Production of biomass by *Schizophyllum commune* and its antifungal activity towards rubberwood-degrading fungi. *Sains Malaysiana* 46 (1): 123-128.
- Teoh YP, Don MM. 2012. Nutrient improvement using statistical optimization for growth of *Schizophyllum commune*, and its antifungal activity against wood degrading fungi of rubberwood. *Biotechnol Prog* 28 (1): 232-241.
- Torre LA, Bray F, Siegel RL, Ferlay J, Lortet-Tieulent J, Jemal A. 2015. Global cancer statistics, 2012. *Ca Cancer J Clin* 65: 87-108.
- Yao HM, Wang G, Liu YP, Rong MQ, Shen CB, Yan XW, Luo DX, Lai R. 2016. Phenolic acids isolated from the fungus *Schizophyllum commune* exert analgesic activity by inhibiting voltage-gated sodium channels. *Chinese J Nat Med* 14 (9): 661-670.

Compounds detection and inhibition activity of chloroform and ethyl acetate extracts of Schizophyllum commune on some cancer cell types

ORIGINALITY REPORT

17%	%	17%	%
SIMILARITY INDEX	INTERNET SOURCES	PUBLICATIONS	STUDENT PAPERS

PRIMARY SOURCES

1	Nuraeni Ekowati, Ardhini R Maharning, Nuniek I Ratnaningtyas, Aris Mumpuni, Arif R Hikam. "Effects of Ethyl Acetate Extract of Jew's Ear Mushrooms (<i>Auricularia auricula</i>) on Cytotoxic and Apoptosis of Cervical Cancer Cells (HeLa)", IOP Conference Series: Earth and Environmental Science, 2020 Publication	3%
2	Mohammad Arif Ashraf. "Phytochemicals as Potential Anticancer Drugs: Time to Ponder Nature's Bounty", BioMed Research International, 2020 Publication	1%
3	Fu-Qiang Song, Ying Liu, Xiang-Shi Kong, Wei Chang, Ge Song. "Progress on Understanding the Anticancer Mechanisms of Medicinal Mushroom: <i>Inonotus Obliquus</i> ", Asian Pacific Journal of Cancer Prevention, 2013 Publication	1%

4	Akhmad Endang Zainal Hasan, Heddy Julistiono, Nurliani Bermawie, Eny Ida Riyanti, Fahru Reza Arifni. "Soursop Leaves (<i>Annona muricata</i> L.) Endophytic Fungi Anticancer Activity against HeLa Cells", Saudi Journal of Biological Sciences, 2022 Publication	1 %
5	M. B. Sporn. "Chemoprevention of cancer", Carcinogenesis, 2000 Publication	1 %
6	Gamal A.E. Mostafa, Yazeed H. Al-Otaibi, Abdullah A. Al-Badr. "Cefpodoxime proxetil", Elsevier BV, 2019 Publication	1 %
7	Kim, Jeong Hwa, Jae Seong Lee, Kyung Rim Lee, Mi Ja Shim, Min Woong Lee, Pyung Gyun Shin, Jong Chun Cheong, Young Bok Yoo, and Tae Soo Lee. "Immunomodulating and Antitumor Activities of <i>Panellus serotinus</i> Polysaccharides", Mycobiology, 2012. Publication	1 %
8	"Bioactive Natural Products for Pharmaceutical Applications", Springer Science and Business Media LLC, 2021 Publication	1 %
9	"In-vitro cytotoxicity and apoptosis mechanism of ethyl acetate extract from	1 %

Trichoderma reesei strain TV221 associated with marine sponge: Stylissa flabelliformis", Journal of Applied Pharmaceutical Science, 2018

Publication

10

"Estudio electro y fotoelectrocatalítico de pastas basadas en materiales carbonosos, líquidos iónicos y porfirinas, actividad frente a la reducción de oxígeno, evolución de hidrógeno y oxidación de ácido gálico.", Pontificia Universidad Catolica de Chile, 2020

Publication

1 %

11

Younis AM. "Anticancer potential of Hericium erinaceus extracts against particular human cancer cell lines", Microbial Biosystems, 2017

Publication

<1 %

12

Cory Creed, Ariel Mollhagen, Noelle Mollhagen, Maciej A. Pszczolkowski. " "Powis Castle" extracts and -thujone prevent fruit infestation by codling moth neonates ", Pharmaceutical Biology, 2015

Publication

<1 %

13

Jelena Krstic, Thomas R. Pieber, Andreas Prokesch. "Stratifying nutritional restriction in cancer therapy: Next stop, personalized medicine", Elsevier BV, 2020

Publication

<1 %

14 Soumya Chatterjee, Gunjan Biswas, Swarnendu Chandra, Goutam Kumar Saha, Krishnendu Acharya. "Apoptogenic effects of Tricholoma giganteum on Ehrlich's ascites carcinoma cell", Bioprocess and Biosystems Engineering, 2012

Publication

<1 %

15 Januar Rizqi, Akbar Satria Fitriawan, Ririn Wahyu Widayati. "THE EFFECTIVENESS OF INDONESIAN HONEY STIMULATE FIBROBLAST CELL VIABILITY AND MIGRATION THAT COULD POTENTIAL PROMOTE WOUND HEALING", Jurnal Keperawatan Respati Yogyakarta, 2022

Publication

<1 %

16 "Medicinal Mushrooms", Springer Science and Business Media LLC, 2019

Publication

<1 %

17 "Medicinal Plants and Fungi: Recent Advances in Research and Development", Springer Science and Business Media LLC, 2017

Publication

<1 %

18 "Nutraceuticals and Cancer Signaling", Springer Science and Business Media LLC, 2021

Publication

<1 %

19 A. Rodriguez-Sanchez, A. Tomasek, S. McMillan, S. Yufra, M. Yupanqui, R. Rondon, L.

<1 %

Hoagland. "Composition and potential functional roles of soil fungal communities on arid farms in Arequipa (Southern Peru) characterized using SMRT sequencing", *Applied Soil Ecology*, 2022

Publication

20

"Biology, Cultivation and Applications of Mushrooms", Springer Science and Business Media LLC, 2022

Publication

<1 %

21

Roxana Filip, Tyler A. Shaw, Atsushi Nishida, John Paul Pezacki. "Fungal natural alkaloid schizocommunin activates the aryl hydrocarbon receptor pathway", *MedChemComm*, 2019

Publication

<1 %

22

Fahad A. Alhumaydhi. " analgesic, muscle relaxant, sedative and toxicological studies of (L.) Roxb ", *Journal of Taibah University for Science*, 2021

Publication

<1 %

23

"Abstracts", *FEBS Journal*, 7/2007

Publication

<1 %

24

Jianguo Wang, Lina Zhang, Yonghui Yu, Peter C. K. Cheung. "Enhancement of Antitumor Activities in Sulfated and Carboxymethylated Polysaccharides of *Ganoderma lucidum*",

<1 %

25

Chih-Yang Huang, Kalaiselvi Sivalingam, Marthandam Asokan Shibu, Po-Hsiang Liao et al. "Induction of Autophagy by Vasicinone Protects Neural Cells from Mitochondrial Dysfunction and Attenuates Paraquat-Mediated Parkinson's Disease Associated α -Synuclein Levels", *Nutrients*, 2020

Publication

<1 %

26

"4th International Phytocosmetics and Phytotherapy Congress (Guatemala - IPPC2016)", *International Journal of Phytocosmetics and Natural Ingredients*, 2016

Publication

<1 %

27

Adhiraj Dasgupta, Krishnendu Acharya. "Bioactive terpenoids from mushrooms", Elsevier BV, 2021

Publication

<1 %

28

Doaa Hamad, Heba El-Sayed, Wafaa Ahmed, Hana Sonbol, Mohammed Abdel Halim Ramadan. "GC-MS Analysis of Potentially Volatile Compounds of *Pleurotus ostreatus* Polar Extract: In vitro Antimicrobial, Cytotoxic, Immunomodulatory, and Antioxidant Activities", *Frontiers in Microbiology*, 2022

Publication

<1 %

29	"Promising Antimicrobials from Natural Products", Springer Science and Business Media LLC, 2022	<1 %
<hr/>		

Publication

30	Afef Abdelwahed, Ines Skandrani, Soumaya Kilani, A. Neffati et al. " Mutagenic, Antimutagenic, Cytotoxic, and Apoptotic Activities of Extracts from ", Drug and Chemical Toxicology, 2008	<1 %
<hr/>		

Publication

31	Ahmed M. Younis, Mohamed Yosri, Jennifer K. Stewart. "In vitro evaluation of pleiotropic properties of wild mushroom Laetiporus sulphureus", Annals of Agricultural Sciences, 2019	<1 %
<hr/>		

Publication

32	Polysaccharides, 2015.	<1 %
<hr/>		

Publication

33	Sarfraz Ahmed, Mohammad Mobashir, Lamya Ahmed Al-Keridis, Nawaf Alshammari, Mohd Adnan, Mohammad Abid, Md Imtaiyaz Hassan. "A Network-Guided Approach to Discover Phytochemical-Based Anticancer Therapy: Targeting MARK4 for Hepatocellular Carcinoma", Frontiers in Oncology, 2022	<1 %
<hr/>		

Publication

34

Tita Juwitaningsih, Destria Roza, Saronom Silaban, Elvira Hermawati, Neneng Windayani. "Phytochemical screening, antibacterial, antioxidant, and anticancer activity of Coffee parasite acetone extract (*Loranthus ferrugineus* Roxb)", Pharmacia, 2022

Publication

<1 %

35

F Arifni, A Hasan, Hasim, H Julistiono, Husnawaty, N Bermawie, E Riyanti. "Anticancer Activities of Endophytic Fungi Isolated from Soursoop Leaves (*Annona muricata* L.) against WiDr Cancer Cells", Annual Research & Review in Biology, 2017

Publication

<1 %

36

Hang Zhang, Shufeng Li, Yongsheng Si, Haiwei Xu. "Andrographolide and its derivatives: Current achievements and future perspectives", European Journal of Medicinal Chemistry, 2021

Publication

<1 %

Exclude quotes On

Exclude matches < 5 words

Exclude bibliography On