



Ruth Feti &lt;ruth.rahayuniati@unsoed.ac.id&gt;

---

**Fwd: Next steps for publishing your article (10.1007/s40858-021-00443-3) - Your publishing agreement**

1 message

---

**Siti Subandiyah** <sitisubandiyah@ugm.ac.id>  
To: Ruth Feti Unsoed <ruth.rahayuniati@unsoed.ac.id>

Sat, Jun 12, 2021 at 2:27 AM

----- Forwarded message -----

From: <[do-not-reply@springernature.com](mailto:do-not-reply@springernature.com)>

Date: Sat, Jun 12, 2021 at 2:23 AM

Subject: Next steps for publishing your article (10.1007/s40858-021-00443-3) - Your publishing agreement

To: <[sitisubandiyah@ugm.ac.id](mailto:sitisubandiyah@ugm.ac.id)>**SPRINGER NATURE**

---

Dear Dr. Siti Subandiyah,

Thank you for completing the publishing agreement for your article in Tropical Plant Pathology, providing Springer Nature with permission to publish and agreeing to how your manuscript can be used by others.

We have attached a copy of the agreement for your records.

With kind regards,

Springer Nature Author Service

---

If you have any questions, please do not hesitate to contact our Author Service team at [ASJournals@springernature.com](mailto:ASJournals@springernature.com)

**PublicationAgreement.pdf**

62K



Ruth Feti &lt;ruth.rahayuniati@unsoed.ac.id&gt;

---

**Fwd: TPPA-D-20-00243R3 - accepted but needs final editing - [EMID:e679dc17c31b95b7]**

5 messages

---

**Siti Subandiyah** <sitisubandiyah@ugm.ac.id>

Sat, May 22, 2021 at 5:04 AM

To: Ruth Feti Unsoed &lt;ruth.rahayuniati@unsoed.ac.id&gt;, ady bayu prakoso &lt;ady.bayu.p@mail.ugm.ac.id&gt;

Wah....ini koq yha masih hrs diperbaiki yhs filogenetic tree nya....

----- Forwarded message -----

Dari: **TROPICAL Plant Pathology (TPPA)** <em@editorialmanager.com>

Date: Sab, 22 Mei 2021 01.26

Subject: TPPA-D-20-00243R3 - accepted but needs final editing - [EMID:e679dc17c31b95b7]

To: Siti - Subandiyah <sitisubandiyah@ugm.ac.id>

Dear Prof Subandiyah,

We are pleased to inform you that your submission Recent Distribution and Diversity Analysis on Banana Bunchy Top Virus of Banana and Alternative Host in Indonesia has been accepted for publication in Tropical Plant Pathology

However, before your paper can be forwarded to our Production Department, you are requested to make the corrections indicated below.

In order to submit your corrected manuscript, please access the following web site:

<https://www.editorialmanager.com/tppa/>

We look forward to receiving your final version of your manuscript.

With kind regards,

Juliana Freitas-Astua

Comments from the Editor:

Dear Dr. Subandiyah,

Even though the manuscript is interesting and should be published, I am still troubled by your figures, as the bootstrap values in your trees are extremely low. I asked for more information and the tree topology changed quite significantly from version R1 to version R2. When I asked for the numbers, the tree topology did not change, but in several cases, the bootstrap support was close to 0. And no numbers were added to the main nodes, which are more relevant for the analysis. With such low numbers in the minor branches, and no information on the major nodes, it is difficult to draw conclusion from the data.

I suggest you focus on the major/ larger nodes, which are more important for the analysis. Therefore, you should add their bootstrap values. They should be preferentially higher than 70% (or 0.7 as you used in the figures, although the % representation is more common), and not lower than 50%. If the main nodes have good bootstrap support, you don't need to add the numbers in the minor nodes. If the bootstrap values of the main nodes are lower than 50%, a different type of analysis should be performed to support your data.

—

Please note that this journal is a Transformative Journal (TJ). Authors may publish their research through the traditional subscription access route or make their paper open access through payment of an article-processing charge (APC). Authors will not be required to make a final decision about access to their article until it has been

accepted. <a href= <https://www.springernature.com/gp/open-research/transformative-journals>> Find out more about Transformative Journals</a>

**\*\*Our flexible approach during the COVID-19 pandemic\*\***

If you need more time at any stage of the peer-review process, please do let us know. While our systems will continue to remind you of the original timelines, we aim to be as flexible as possible during the current pandemic.

This letter contains confidential information, is for your own use, and should not be forwarded to third parties.

Recipients of this email are registered users within the Editorial Manager database for this journal. We will keep your information on file to use in the process of submitting, evaluating and publishing a manuscript. For more information on how we use your personal details please see our privacy policy at <https://www.springernature.com/production-privacy-policy>. If you no longer wish to receive messages from this journal or you have questions regarding database management, please contact the Publication Office at the link below.

In compliance with data protection regulations, you may request that we remove your personal registration details at any time. (Use the following URL: <https://www.editorialmanager.com/tpa/login.asp?a=r>). Please contact the publication office if you have any questions.

---

**ady bayu prakoso** <ady.bayu.p@mail.ugm.ac.id>  
To: Siti Subandiyah <sitisubandiyah@ugm.ac.id>  
Cc: Ruth Feti Unsoed <ruth.rahayuniati@unsoed.ac.id>

Sat, May 22, 2021 at 5:10 AM

Segeera kami proses bu.. nuwun..

[Quoted text hidden]

---

**Siti Subandiyah** <sitisubandiyah@ugm.ac.id>  
To: ady bayu prakoso <ady.bayu.p@mail.ugm.ac.id>  
Cc: Ruth Feti Unsoed <ruth.rahayuniati@unsoed.ac.id>

Sat, May 22, 2021 at 6:02 AM

Mtr nwn

[Quoted text hidden]

---

**Ruth Feti** <ruth.rahayuniati@unsoed.ac.id>  
To: Siti Subandiyah <sitisubandiyah@ugm.ac.id>  
Cc: ady bayu prakoso <ady.bayu.p@mail.ugm.ac.id>

Sat, May 22, 2021 at 9:58 AM

Baik bu..

Dan terima kasih utk Dibay yang langsung follow up..

[Quoted text hidden]

---

**Ruth Feti** <ruth.rahayuniati@unsoed.ac.id>  
To: Siti Subandiyah <sitisubandiyah@ugm.ac.id>  
Cc: ady bayu prakoso <ady.bayu.p@mail.ugm.ac.id>

Sun, May 23, 2021 at 3:22 PM

Dear Ibu,  
Berikut draft yang sudah diperbaiki gambar filogenetiknya.  
Mohon untuk dikoreksi kembali.

terima kasih

[Quoted text hidden]

--

Ruth Feti Rahayuniati

Lab. Plant Protection,  
Department of Agrotechnology  
Faculty of Agriculture  
Universitas Jenderal Soedirman  
Jl. dr. Suparno, Karangwangkal, Purwokerto  
Central Java, Indonesia 53123

Phone: +62 281-638791

Mobile: +62 812-27-80561



**Rahayuniati et al 2020-Tropical Plant Pathology\_last edited.docx**

5418K



Ruth Feti &lt;ruth.rahayuniati@unsoed.ac.id&gt;

**Fwd: Your article in Tropical Plant Pathology is now online**

1 message

**Siti Subandiyah** <sitisubandiyah@ugm.ac.id>  
To: Ruth Feti Unsoed <ruth.rahayuniati@unsoed.ac.id>

Sun, Jun 27, 2021 at 1:48 AM

----- Forwarded message -----

Dari: **Springer** <SpringerAlerts@springeronline.com>

Date: Sab, 26 Jun 2021 23.16

Subject: Your article in Tropical Plant Pathology is now online

To: &lt;sitisubandiyah@ugm.ac.id&gt;



Online First: your article is published

2021-06-26

## Congratulations

Dear Author,

We are pleased to inform you that your article has just been published:

**Title**

Recent distribution and diversity analysis on banana  
bunchy top virus of banana and alternative host in  
Indonesia

**Journal**

Tropical Plant Pathology, (), 1-12

**DOI**

10.1007/s40858-021-00443-3

Your article is available as 'Online First':

<http://link.springer.com/article/10.1007/s40858-021-00443-3>

**We're committed to making your article as accessible and discoverable as possible:**

- Your article is fully accessible to all users at libraries and institutions that have purchased access to SpringerLink.
- SharedIt: Springer Nature's innovative content-sharing initiative means that research articles can also be posted anywhere. [Find out more.](#)
- Open access: If your article is published open access, it will be freely accessible to any user, immediately, with no access fees. Open access also

allows for unrestricted re-use. [Find out more.](#)

### Announce your publication

We encourage you to forward this email to your co-authors. Additionally we recommend you mention your article's publication and its DOI on your website or your social media profiles.

Use the buttons below to share your article on social media.



### Citation Information

Your article can be cited by its DOI 10.1007/s40858-021-00443-3 in the following form:

*Author, Journal Title, Year, DOI*

We will notify you once your article completed production and is assigned to a specific journal issue. After that any additional (printed) offprints or posters you might have ordered will be shipped to you.

### Author services to amplify your research

From video abstracts to article metrics to research data support, find out about the author services and how these could benefit you and your research.

[Read more.](#)

Thank you again for publishing with Springer. We look forward to your future contributions!

Best regards,

**Alison Mitchell**

Managing Director Journals

Did you know?

If you are using an ORCID iD and allow for auto-update, your article will appear in your ORCID record automatically. ORCID iDs create a unique, persistent and internationally recognized identifier that attaches your identity to your work, such as articles and their citations. More on ORCID benefits at [springernature.com/orcid](https://springernature.com/orcid).

If you have any questions, please visit our support pages, [support.springernature.com](https://support.springernature.com) or contact Author Support, [authorsupport@springernature.com](mailto:authorsupport@springernature.com)

© Springer Nature 2021, [springer.com](https://springer.com)



Ruth Feti &lt;ruth.rahayuniati@unsoed.ac.id&gt;

---

**Fwd: Your Submission TPPA-D-20-00243R1**

4 messages

---

**Siti Subandiyah** <sitisubandiyah@ugm.ac.id>  
To: Ruth Feti Unsoed <ruth.rahayuniati@unsoed.ac.id>

Tue, Apr 13, 2021 at 7:55 PM

----- Forwarded message -----

Dari: **TROPICAL Plant Pathology (TPPA)** <em@editorialmanager.com>

Date: Sel, 13 Apr 2021 19.30

Subject: Your Submission TPPA-D-20-00243R1

To: Siti - Subandiyah &lt;sitisubandiyah@ugm.ac.id&gt;

Dear Prof Subandiyah,

We have received the reports from our advisors on your manuscript, "Recent Distribution and Diversity Analysis on Banana Bunchy Top Virus of Banana and Alternative Host in Indonesia", submitted to Tropical Plant Pathology

Based on the advice received, I have decided that your manuscript can be accepted for publication after you have carried out the corrections as suggested by the reviewer(s).

Below, please find the reviewers' comments for your perusal.  
You are kindly requested to also check the website for possible reviewer attachment(s).

Please submit your revised manuscript online by using  
the Editorial Manager system.

Your username is: [sitisubandiyah@ugm.ac.id](mailto:sitisubandiyah@ugm.ac.id)

If you forgot your password, you can click the 'Send Login Details' link on the EM Login page at  
<https://www.editorialmanager.com/tppa/>.

In order to add the due date to your electronic calendar, please open the attached file.

I am looking forward to receiving your revised manuscript  
before 28 May 2021.

With kind regards,  
Juliana Freitas-Astua  
Section Editor

Comments for the Author:

The authors followed the recommendations suggested by the reviewers and the manuscript is improved. However, I identified some aspects that still need to be addressed before publication.

The main point relates to the numbers in the trees. I have never seen a tree where all the numbers are the same, and it was consistent with all of your trees. Figure 3 shows the main node with 96% and all of the branches with 98%. The same is seen for Figures 4 (65% in the main node and 82% in all branches), 5 (85% and 94%), 6 (87% and 93%), and 11 (96% and 98%). This does not seem right, or at least I have never seen such uniformity in the data. Could you please confirm the numbers?

In addition, there are minor edits mainly related to italicized words: in lines 60 and 71, "Musacea" and "et al." should not be italicized, while in lines 131, 132, 133, *P. nigronevosa*, *Caladium bicolor*, and *Musa* (twice) should. In fact, all *Musa* should probably be italicized (lines 277 and others).

Also, in lines 259, 281, 305, 398, 399, 408 (and check others) add dots after genera abbreviation (*M. acuminata*..., *P. nigronevosa*).

In line 312, the comma is out of place (Furthermore, the...)

Please correct "furthermore" in line 325.

Line 363: trans-migration. (please eliminate the extra space)

Line 365 "in West" needs a space between words.

Please replace "virulivirous" by "viruliferous" in lines 408 (and whenever necessary in the text).

Should *Abaca* be written in uppercase? It does not seem necessary. If that is the case, please correct throughout the

manuscript. The same for Colocasia.

Please note that this journal is a Transformative Journal (TJ). Authors may publish their research through the traditional subscription access route or make their paper open access through payment of an article-processing charge (APC). Authors will not be required to make a final decision about access to their article until it has been accepted. <a href= <https://www.springernature.com/gp/open-research/transformative-journals>> Find out more about Transformative Journals</a>

**\*\*Our flexible approach during the COVID-19 pandemic\*\***

If you need more time at any stage of the peer-review process, please do let us know. While our systems will continue to remind you of the original timelines, we aim to be as flexible as possible during the current pandemic.

This letter contains confidential information, is for your own use, and should not be forwarded to third parties.

Recipients of this email are registered users within the Editorial Manager database for this journal. We will keep your information on file to use in the process of submitting, evaluating and publishing a manuscript. For more information on how we use your personal details please see our privacy policy at <https://www.springernature.com/production-privacy-policy>. If you no longer wish to receive messages from this journal or you have questions regarding database management, please contact the Publication Office at the link below.

In compliance with data protection regulations, you may request that we remove your personal registration details at any time. (Use the following URL: <https://www.editorialmanager.com/tpa/login.asp?a=r>). Please contact the publication office if you have any questions.

---

**Ruth Feti** <ruth.rahayuniati@unsoed.ac.id>  
To: adybayu.434@gmail.com

Tue, Apr 13, 2021 at 9:09 PM

[Quoted text hidden]

--  
Ruth Feti Rahayuniati

Lab. Plant Protection,  
Department of Agrotechnology  
Faculty of Agriculture  
Universitas Jenderal Soedirman  
Jl. dr. Suparno, Karangwangkal, Purwokerto  
Central Java, Indonesia 53123

Phone: +62 281-638791  
Mobile: +62 812-27-80561



**Rahayuniati et al 2020-Tropical Plant Pathology\_revisi terbaru.docx**  
8141K

---

**Ady Bayu Prakoso** <adybayu.434@gmail.com>  
To: Ruth Feti <ruth.rahayuniati@unsoed.ac.id>

Mon, Apr 26, 2021 at 10:42 AM

Berikut saya kirimkan yang filo dan metode filonya sudah diperbaiki mbak, kalau saja di pembahasannya ada yang berbeda, untuk yang lain sambil jalan ya.

[Quoted text hidden]

--  
**Ady Bayu Prakoso, S.P.** (Dibay Prakoso)  
Clinical Disease Laboratory  
Phytopathology'17  
Universitas Gadjah Mada



Yogyakarta

---

**2 attachments****Add reff.docx**  
13K**Rahayuniati et al 2020-Tropical Plant Pathology\_revisi terbaru (1) From dibay.docx**  
5424K

---

**Ady Bayu Prakoso** <adybayu.434@gmail.com>  
To: Ruth Feti <ruth.rahayuniati@unsoed.ac.id>

Mon, Apr 26, 2021 at 10:56 AM

ini mbak untuk typo dan tambahan, tp ada bbrp yang belum saya perbaiki

1. Line 363: trans-migration. (please eliminate the extra space)
2. Should Abaca be written in uppercase? It does not seem necessary. If that is the case, please correct throughout the manuscript. The same for Colocasia.

[Quoted text hidden]

**Rahayuniati et al 2020-Tropical Plant Pathology\_revisi terbaru (1) From dibay.docx**  
5376K



Ruth Feti &lt;ruth.rahayuniati@unsoed.ac.id&gt;

---

**manuscript**

19 messages

---

**Ruth Feti** <ruth.rahayuniati@unsoed.ac.id>  
To: Ady Bayu Prakoso <adybayu.434@gmail.com>

Thu, Apr 22, 2021 at 11:57 AM

dibay, ini kukirim lagi manuskripnya ya.. tq

--

Ruth Feti Rahayuniati

Lab. Plant Protection,  
Department of Agrotechnology  
Faculty of Agriculture  
Universitas Jenderal Soedirman  
Jl. dr. Suparno, Karangwangkal, Purwokerto  
Central Java, Indonesia 53123

Phone: +62 281-638791  
Mobile: +62 812-27-80561



---

**Rahayuniati et al 2020-Tropical Plant Pathology\_revisi terbaru.docx**  
8141K

---

**Ady Bayu Prakoso** <adybayu.434@gmail.com>  
To: Ruth Feti <ruth.rahayuniati@unsoed.ac.id>

Fri, Apr 23, 2021 at 1:43 PM

Selamat siang mbak, titip data filo ya mbak, biar bisa dikerjain dari rumah. atau kalau mbak feti penasaran bisa dibongkar kok hehehe

[Quoted text hidden]

--

**Ady Bayu Prakoso, S.P.** (Dibay Prakoso)  
Clinical Disease Laboratory  
Phytopathology'17  
Universitas Gadjah Mada  
Yogyakarta

---

**2 attachments****Alignment and Phylogeny NGPOLYGENY.txt**  
1K**New NGphylogeny.7z**  
82K

---

**Ruth Feti** <ruth.rahayuniati@unsoed.ac.id>  
To: Ady Bayu Prakoso <adybayu.434@gmail.com>

Fri, Apr 23, 2021 at 1:45 PM

Hhh...tengkyuh...pasti pinisirin, njuk takon takon... 😊

[Quoted text hidden]

---

**Ady Bayu Prakoso** <adybayu.434@gmail.com>  
To: Ruth Feti <ruth.rahayuniati@unsoed.ac.id>

Fri, Apr 23, 2021 at 1:48 PM

Iyo mbak, itu kmren smpt diskusi dan disarankan muktiple align MAFFT makanya itu rincian file pertahapannya

[Quoted text hidden]

**Ruth Feti** <ruth.rahayuniati@unsoed.ac.id>  
To: Ady Bayu Prakoso <adybayu.434@gmail.com>

Fri, Apr 23, 2021 at 1:51 PM

Wokey...siip.lah...timnya bu prof memang oye lah...

[Quoted text hidden]

**Ady Bayu Prakoso** <adybayu.434@gmail.com>  
To: Ruth Feti <ruth.rahayuniati@unsoed.ac.id>

Tue, May 18, 2021 at 9:02 AM


Berikut saya kirimkan yang sudah mbak.. yg R sebentar nggih agak ribet hehe


[Quoted text hidden]

---

**4 attachments**

 **S numb (1).svg**  
48K

 **C numb.svg**  
46K

 **N numb (1).svg**  
38K

 **host numb.svg**  
29K

---

**Ady Bayu Prakoso** <adybayu.434@gmail.com>  
To: Ruth Feti <ruth.rahayuniati@unsoed.ac.id>


Tue, May 18, 2021 at 9:13 PM

maaf mbak lama, berikut saya kirimkan untuk yg genom R mbak  
unntuk sitasinya saya lupa sudah mencantumkan atau belum, tpi visualisasinya pakai berikut:

iTOL web service : Letunic and Bork (2021) *Nucleic Acids Res* doi: [10.1093/nar/gkab301](https://doi.org/10.1093/nar/gkab301)

[Quoted text hidden]

---

 **R numb.svg**  
97K

---

**Ruth Feti** <ruth.rahayuniati@unsoed.ac.id>  
To: Ady Bayu Prakoso <adybayu.434@gmail.com>

Tue, May 18, 2021 at 9:15 PM

Makasih banget Dibay... 🙏

[Quoted text hidden]

---

**Ady Bayu Prakoso** <adybayu.434@gmail.com>  
To: Ruth Feti <ruth.rahayuniati@unsoed.ac.id>

Tue, May 18, 2021 at 9:16 PM

Oke mbak.

[Quoted text hidden]

---

**Ady Bayu Prakoso** <adybayu.434@gmail.com>  
To: Ruth Feti <ruth.rahayuniati@unsoed.ac.id>

Wed, May 19, 2021 at 1:07 PM

ini mbak versi full PNG nya

[Quoted text hidden]

---

**2 attachments**

 **R numb1.png**  
334K



R numb.png  
333K

**Ady Bayu Prakoso** <adybayu.434@gmail.com>  
To: Ruth Feti <ruth.rahayuniati@unsoed.ac.id>

Sun, May 23, 2021 at 12:15 PM

seperti ini mbak?

[Quoted text hidden]



New host range.png  
323K

**Ruth Feti** <ruth.rahayuniati@unsoed.ac.id>  
To: Ady Bayu Prakoso <adybayu.434@gmail.com>

Sun, May 23, 2021 at 12:30 PM

yup..  
itu yg node utama sudah lebih dari 70/0,7 dan tidak ada yg kurang dari 50 kan..  
smoga lancar lah

[Quoted text hidden]

**Ady Bayu Prakoso** <adybayu.434@gmail.com>  
To: Ruth Feti <ruth.rahayuniati@unsoed.ac.id>

Sun, May 23, 2021 at 1:09 PM

1-1 ya mbak, sudah terunning semua tnggal customize  
[Quoted text hidden]



New host range (1).png  
336K

**Ruth Feti** <ruth.rahayuniati@unsoed.ac.id>  
To: Ady Bayu Prakoso <adybayu.434@gmail.com>

Sun, May 23, 2021 at 1:14 PM

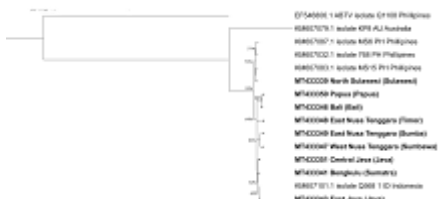
Wokey Bay...tq  
[Quoted text hidden]

**Ady Bayu Prakoso** <adybayu.434@gmail.com>  
To: Ruth Feti <ruth.rahayuniati@unsoed.ac.id>

Sun, May 23, 2021 at 1:43 PM

mbak, prefer yang tadi atau yg seperti ini?

[Quoted text hidden]

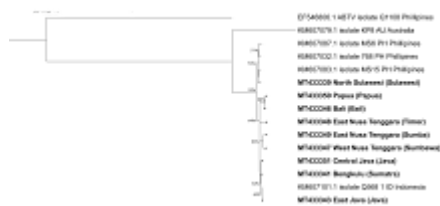
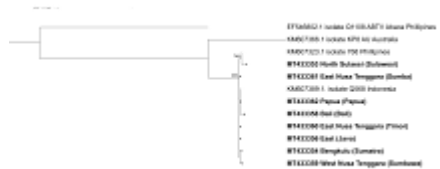


S numb (1).svg.png  
283K

**Ady Bayu Prakoso** <adybayu.434@gmail.com>  
To: Ruth Feti <ruth.rahayuniati@unsoed.ac.id>

Sun, May 23, 2021 at 1:52 PM

[Quoted text hidden]

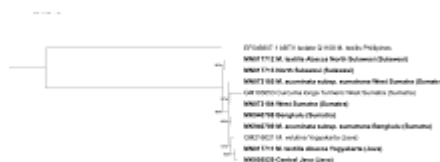
**3 attachments****S numb (1).svg.png**  
283K**N No.png**  
221K**S no.png**  
271K

**Ady Bayu Prakoso** <adybayu.434@gmail.com>  
To: Ruth Feti <ruth.rahayuniati@unsoed.ac.id>

Sun, May 23, 2021 at 1:57 PM

hostrange

[Quoted text hidden]

**host no.png**  
230K

**Ady Bayu Prakoso** <adybayu.434@gmail.com>  
To: Ruth Feti <ruth.rahayuniati@unsoed.ac.id>

Sun, May 23, 2021 at 2:05 PM

Last, ini mbak.. kalau dirasa kurang besar nnti kubantu cropping

[Quoted text hidden]

**R no1.png**  
317K

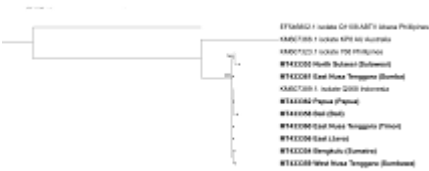
**Ady Bayu Prakoso** <adybayu.434@gmail.com>  
To: Ruth Feti <ruth.rahayuniati@unsoed.ac.id>

Sun, May 23, 2021 at 2:13 PM

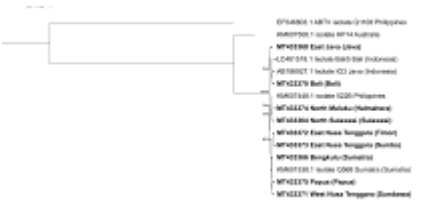
Maaf mbak.. bercecer.. Ini kusatuin jd 1 email saja hehe

[Quoted text hidden]

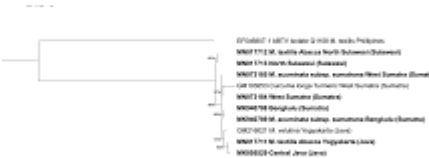
**5 attachments**



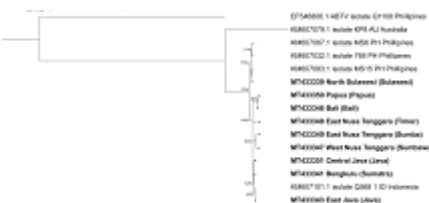
N No.png  
221K



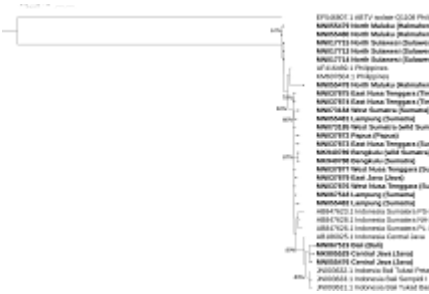
S no.png  
271K



host no.png  
230K



S numb (1).svg.png  
283K



R no1.png  
299K



Ruth Feti &lt;ruth.rahayuniati@unsoed.ac.id&gt;

---

**Re: FW: Tropical Plant Pathology - Submission Notification to co-author - [EMID:24780df6ef754f96]**

1 message

---

**John Thomas** <j.thomas2@uq.edu.au>

Tue, Dec 22, 2020 at 5:00 PM

To: Siti Subandiyah &lt;sitisubandiyah@ugm.ac.id&gt;, Ruth Feti Unsoed &lt;ruth.rahayuniati@unsoed.ac.id&gt;

Hi Siti and Feti

I've been through the manuscript. As I mentioned before, there are some very good results there, but it does need a lot of tidying up before submission. It would be a pity if it was rejected because of the presentation rather than on an assessment of the results. I have attached a copy with tracked changes, and a "clean" copy so you can read the edited version more easily. The changes probably look more serious than they really are.

Please check that I have not made any mistakes in reporting the work accurately when I've changed the wording. And remember, these are suggestions. Let me know if you disagree with any of the changes.

There are many comments directly on the manuscript and I hope they are self-explanatory, but please check with me if anything is unclear. I think the major change I have suggested is in the molecular analyses. The restriction enzyme work is not necessary. You may already have done the pairwise analyses that I have suggested, and it should not be a major task. Nevertheless, if you would like me to do any of that analysis, please let me know.

As I've mentioned before, a funding requirement is publication in an approved open access journal. The manuscript will have to be submitted through BMGF Chronos system, but the journal Tropical Plant Pathology is one of the approved journals and BMGF will pay the open access fee.

I would be happy to have a skype or Zoom chat if you think that would be useful.

Looking forward to hearing from you again,  
Best wishes,  
John

**Assoc. Prof. John E Thomas**

The University of Queensland  
**Queensland Alliance for Agriculture and Food Innovation**

**Mail:** Ecosciences Precinct, Level 2C west

GPO Box 267, Brisbane

Queensland 4001, Australia

**Phone:** 61 7 3443 2461, **Mobile phone:** +61 400579449 **Email:** j.thomas2@uq.edu.au

---

**From:** Siti Subandiyah <sitisubandiyah@ugm.ac.id>

**Sent:** Monday, 21 December 2020 6:45 PM

**To:** John Thomas <j.thomas2@uq.edu.au>

**Subject:** Re: FW: Tropical Plant Pathology - Submission Notification to co-author - [EMID:24780df6ef754f96]

Yes John I agree to withdraw it first and resubmit after your correction. We are in a hurry due to the period of study of Feti is terminated...thanks a lot John looking forward for your correction

Regards  
Siti

Pada tanggal Sen, 21 Des 2020 15:07, John Thomas <j.thomas2@uq.edu.au> menulis:

Hi Siti

That sounds like a very challenging covid-19 situation that you are facing. I hope you and your family and colleagues can stay healthy.

Thanks for sending the copies of the manuscripts. I've had a look through Feti's Tropical Plant Pathology manuscript, and there is good information in there. However, there are some errors, the English expression does need much editing, and some of the sections are too long. Can I suggest that you withdraw submission for the moment and resubmit shortly. I have started editing the manuscript and I can try to have it finished by tomorrow. Despite the good work, I think you risk a very high chance of rejection if these corrections are not done, and I think it would be a pity if this was to happen. The journals also expect that all authors have seen and approve the manuscript prior to submission, and that is the best way to avoid a difficult situation like this.

Please let me know if you are happy with this approach. I am keen, as I'm sure you are, that Feti gets a good publication here as quickly as possible.

Best wishes,

John

**From:** Siti Subandiyah <sitisubandiyah@ugm.ac.id>

**Sent:** Monday, 21 December 2020 12:24 PM

**To:** John Thomas <j.thomas2@uq.edu.au>

**Subject:** Re: FW: Tropical Plant Pathology - Submission Notification to co-author - [EMID:24780df6ef754f96]

Dear John,

Thanks a lot for your notification, so stay healthy and take care. Here in Indonesia the situation is quite bad. After our Dept of Plant Protection had to be locked down then here at the Research Center of Biotech also locked down due to some students got positive of Covid-19. Everyday now in Ind the infection increase with 6000s new infections....We are here at UGM have to work with health strictly procedure since the incidence of covid-19 positive move around in the campus from one lab to another or one office to another...

I am finalizing the report of UGM including the manuscripts...one manuscript has been submitted and under review in Biodiversitas, a national journal that has been indexed by Scopus, another one was recently submitted to Tropical Plant Pathology. Both of the manuscripts are for Feti's requirement of her PhD program. We still have another one on Feti's work is the transcriptomic of the interaction of BBTV and some bananas with different responses against the virus, however if she has had 2 publications she will be already allowed to have final exam and the transcriptomic work will be completed after her exam soon next year. Another manuscript is on the validation of gene expression related to the interaction of the vector and the virus with Alan. The EPG work has been completed however I still have to translate the manuscript. Attached files are the manuscript related to UGM task on this BMGF research collaboration.

Merry Christmas and Happy New Year John

Best regards

Siti

On Mon, Dec 21, 2020 at 7:07 AM John Thomas <j.thomas2@uq.edu.au> wrote:



Hi Siti

I hope all is going well for you. How are things in Yogya? I hope you can manage a relaxing break over the holiday period. We are doing OK here in Brisbane, but over the last few days there has been a significant covid 19 outbreak in Sydney, which has caused havoc with many people's Christmas plans there.

I received the email below about the publication of your BBTV work - could you please send me a copy of the manuscript so that I can have a look and then reply to the journal's email? Did you submit this through the BMGF Chronos system so that you can make the publication open access without cost to you?

Looking forward to your reply,  
Best wishes,  
John

Thanks, and best wishes,  
John

-----Original Message-----

From: [em.tppa.0.7011fc.1e3e848d@editorialmanager.com](mailto:em.tppa.0.7011fc.1e3e848d@editorialmanager.com) <[em.tppa.0.7011fc.1e3e848d@editorialmanager.com](mailto:em.tppa.0.7011fc.1e3e848d@editorialmanager.com)> On Behalf Of TROPICAL Plant Pathology (TPPA)

Sent: Saturday, 19 December 2020 11:06 AM

To: John Thomas <[j.thomas2@uq.edu.au](mailto:j.thomas2@uq.edu.au)>

Subject: Tropical Plant Pathology - Submission Notification to co-author - [EMID:24780df6ef754f96]

Re: "Recent Distribution and Alternative Host of Banana Bunchy Top Virus in Indonesia"

Full author list: Siti - Subandiyah, PhD; Ruth Feti Rahayuniati, Master; Sedyo - Hartono, PhD; Susanto - Somowiyarjo, PhD; Ruly Eko Kusuma Kurniawan, Master; Ady Bayu Prakoso, Master; Kathy - Crew, PhD; Megan - Vance, PhD; Jane Danise Ray, Master; John E Thomas, PhD

Dear Prof John Thomas,

We have received the submission entitled: "Recent Distribution and Alternative Host of Banana Bunchy Top Virus in Indonesia" for possible publication in Tropical Plant Pathology, and you are listed as one of the co-authors.

The manuscript has been submitted to the journal by Dr. Prof Siti - Subandiyah who will be able to track the status of the paper through his/her login.

If you have any objections, please contact the editorial office as soon as possible. If we do not hear back from you, we will assume you agree with your co-authorship.

Thank you very much.

With kind regards,

Springer Journals Editorial Office  
Tropical Plant Pathology

**\*\*Our flexible approach during the COVID-19 pandemic\*\***

If you need more time at any stage of the peer-review process, please do let us know. While our systems will continue to remind you of the original timelines, we aim to be as flexible as possible during the current pandemic.

This letter contains confidential information, is for your own use, and should not be forwarded to third parties.

Recipients of this email are registered users within the Editorial Manager database for this journal. We will keep your information on file to use in the process of submitting, evaluating and publishing a manuscript. For more information on how we use your personal details please see our privacy policy at <https://www.springernature.com/production-privacy-policy>. If you no longer wish to receive messages from this journal or you have questions regarding database management, please contact the Publication Office at the link below.

In compliance with data protection regulations, you may request that we remove your personal registration details at any time. (Use the following URL: <https://www.editorialmanager.com/tppa/login.asp?a=r>). Please contact the publication office if you have any questions.

---

**2 attachments**



**Rahayuniati et al 2020- BBTV-distribution-alternative host-TPP\_JT clean.docx**  
2889K



**Rahayuniati et al 2020- BBTV-distribution-alternative host-TPP\_JT.docx**  
2932K



Ruth Feti &lt;ruth.rahayuniati@unsoed.ac.id&gt;

---

**revisi journal**

1 message

---

**Ruth Feti Unsoed** <ruth.rahayuniati@unsoed.ac.id>  
To: Siti Subandiyah <sitisubandiyah@ugm.ac.id>

Thu, Feb 25, 2021 at 8:52 PM

Dear Ibu,  
berikut saya kirimkan draft publikasi TPP yang direvisi. mohon untuk dikoreksi.

terima kasih

--  
Ruth Feti Rahayuniati

Lab. Plant Protection,  
Department of Agrotechnology  
Faculty of Agriculture  
Universitas Jenderal Soedirman  
Jl. dr. Suparno, Karangwangkal, Purwokerto  
Central Java, Indonesia 53123

Phone: +62 281-638791  
Mobile: +62 812-27-80561

---

**2 attachments****Rahayuniati et al 2020-Tropical Plant Pathology\_revision.docx**  
4454K**Comment for the author.docx**  
17K



Ruth Feti &lt;ruth.rahayuniati@unsoed.ac.id&gt;

---

**revisi jurnal**

1 message

---

**Ruth Feti Unsoed** <ruth.rahayuniati@unsoed.ac.id>  
To: Siti Subandiyah <sitisubandiyah@ugm.ac.id>

Mon, Dec 28, 2020 at 2:13 AM

Dear ibu,  
berikut saya kirimkan revisi jurnal untuk TPP.  
untuk multi alignment belum saya sertakan

--

Ruth Feti Rahayuniati

Lab. Plant Protection,  
Department of Agrotechnology  
Faculty of Agriculture  
Universitas Jenderal Soedirman  
Jl. dr. Suparno, Karangwangkal, Purwokerto  
Central Java, Indonesia 53123

Phone: +62 281-638791  
Mobile: +62 812-27-80561

---

**2 attachments****Supplementary\_Table 1.docx**  
31K**Rahayuniati et al 2020-Tropical Plant Pathology\_new revision.docx**  
5175K



Ruth Feti &lt;ruth.rahayuniati@unsoed.ac.id&gt;

---

**revisi manuskrip**

3 messages

---

**Ruth Feti** <ruth.rahayuniati@unsoed.ac.id>  
To: Siti Subandiyah <sitisubandiyah@ugm.ac.id>

Mon, Apr 26, 2021 at 5:40 PM

Dear Ibu,  
berikut saya kirimkan revisi manskrip setelah ada perbaikan filogenetik. mohon dikoreksi kembali, siapa tahu ada yang terlewatkan.  
terima kasih.

--

Ruth Feti Rahayuniati

Lab. Plant Protection,  
Department of Agrotechnology  
Faculty of Agriculture  
Universitas Jenderal Soedirman  
Jl. dr. Suparno, Karangwangkal, Purwokerto  
Central Java, Indonesia 53123

Phone: +62 281-638791  
Mobile: +62 812-27-80561



---

**Rahayuniati et al 2020-Tropical Plant Pathology\_revision\_new.docx**  
5495K

---

**Siti Subandiyah** <sitisubandiyah@ugm.ac.id>  
To: Ruth Feti <ruth.rahayuniati@unsoed.ac.id>

Mon, Apr 26, 2021 at 6:50 PM

Ok tq nanti dak cek lagi sbllm resubmit  
Sukses selalu...

[Quoted text hidden]

---

**Ruth Feti** <ruth.rahayuniati@unsoed.ac.id>  
To: Siti Subandiyah <sitisubandiyah@ugm.ac.id>

Mon, Apr 26, 2021 at 8:04 PM

Baik bu...maturnuwun

[Quoted text hidden]



Ruth Feti &lt;ruth.rahayuniati@unsoed.ac.id&gt;

---

**Updated manuscript**

2 messages

**John Thomas** <j.thomas2@uq.edu.au>

Wed, Dec 23, 2020 at 8:03 AM

To: Siti Subandiyah &lt;sitisubandiyah@ugm.ac.id&gt;, "ruth.rahayuniati@unsoed.ac.id" &lt;ruth.rahayuniati@unsoed.ac.id&gt;

Cc: Megan Vance &lt;m.vance@uq.edu.au&gt;, CREW Kathy &lt;Kathy.Crew@daf.qld.gov.au&gt;

Hi Siti, Feti

Megan has had a look through the manuscript and done some further tidying up of the English presentation. Please refer to this clean version, rather than the one I sent yesterday.

Best wishes,

John

**A/Prof. John E Thomas**

Principal Research Fellow

The University of Queensland

**Queensland Alliance for Agriculture and Food Innovation**

Mail:

Ecosciences Precinct, Level 2C west

GPO Box 267

Brisbane

Queensland 4001, Australia

**Phone:** 61 7 3443 2461**Mobile:** 0400579449**Fax:** 61 7 3708 8429**Email:** [j.thomas2@uq.edu.au](mailto:j.thomas2@uq.edu.au)**Rahayuniati et al 2020- BBTv-distribution-alternative host-TPP\_JT\_MV\_clean.docx**  
2888K**Siti Subandiyah** <sitisubandiyah@ugm.ac.id>

Wed, Dec 23, 2020 at 8:55 AM

To: John Thomas &lt;j.thomas2@uq.edu.au&gt;

3/30/23, 6:24 PM

Universitas Jenderal Soedirman Mail - Updated manuscript

Cc: Ruth Feti Unsoed <ruth.rahayuniati@unsoed.ac.id>, Megan Vance <m.vance@uq.edu.au>, CREW Kathy <Kathy.Crew@daf.qld.gov.au>

Thanks a lot Megan and John

Regards

Siti

[Quoted text hidden]