

ISSN: 1412-033X
E-ISSN: 2085-4722

BIODIVERSITAS

Journal of Biological Diversity

Volume 23 - Number 4 - April 2022



Front cover: Pulsatilla patens (L.) Mill.
(PHOTO: SERIK A. KUBENTAYEV)

Published monthly

PRINTED IN INDONESIA

ISSN: 1412-033X

E-ISSN: 2085-4722



BIODIVERSITAS

Journal of Biological Diversity
Volume 23 - Number 5 - May 2022

ISSN/E-ISSN:

1412-033X (printed edition), 2085-4722 (electronic)

EDITORIAL BOARD:

Abdel Fattah N.A. Rabou (Palestine), **Agnieszka B. Najda** (Poland), **Ajay Kumar Gautam** (India), **Alan J. Lyubery** (Australia), **Annisa** (Indonesia), **Bambang H. Saharjo** (Indonesia), **Daiane H. Nunes** (Brazil), **Darlina Md. Naim** (Malaysia), **Ghulam Hassan Dar** (India), **Hassan Pourbabaie** (Iran), **Joko R. Witono** (Indonesia), **Kartika Dewi** (Indonesia), **Katsuhiko Kondo** (Japan), **Kusumadewi Sri Yulita** (Indonesia), **Livia Wanntorp** (Sweden), **M. Jayakara Bhandary** (India), **Mahdi Reyahi-Khoram** (Iran), **Mahendra K. Rai** (India), **Mahesh K. Adhikari** (Nepal), **Maria Panitsa** (Greece), **Mochamad A. Soendjoto** (Indonesia), **Mohamed M.M. Najim** (Srilanka), **Mohib Shah** (Pakistan), **Nurhasanah** (Indonesia), **Praptiwi** (Indonesia), **Rasool B. Tareen** (Pakistan), **Seyed Aliakbar Hedayati** (Iran), **Seyed Mehdi Talebi** (Iran), **Shahabuddin** (Indonesia), **Shahir Shamsir** (Malaysia), **Shri Kant Tripathi** (India), **Subhash C. Santra** (India), **Sugeng Budiharta** (Indonesia), **Sugiyarto** (Indonesia), **Taufiq Purna Nugraha** (Indonesia), **Yosep S. Mau** (Indonesia)

EDITOR-IN-CHIEF:

S u t a r n o

EDITORIAL MEMBERS:

English Editors: **Graham Eagleton** (grahameagleton@gmail.com), **Suranto** (surantouns@gmail.com); Technical Editor: **Solichatun** (solichatun_s@yahoo.com), **Artini Pangastuti** (pangastuti_tutut@yahoo.co.id); Distribution & Marketing: **Rita Rakhmawati** (oktia@yahoo.com); Webmaster: **Ari Pitoyo** (aripitoyo@yahoo.com)

MANAGING EDITORS:

Ahmad Dwi Setyawan (unsjournals@gmail.com)

PUBLISHER:

The Society for Indonesian Biodiversity

CO-PUBLISHER:

Department of Biology, Faculty of Mathematics and Natural Sciences, Sebelas Maret University, Surakarta

ADDRESS:

Jl. Ir. Sutami 36A Surakarta 57126. Tel. +62-271-7994097, Tel. & Fax.: +62-271-663375, email: editors@smujo.id

ONLINE:

biodiversitas.mipa.uns.ac.id; smujo.id/biodiv



Society for Indonesia
Biodiversity



Sebelas Maret University
Surakarta

GUIDANCE FOR AUTHORS

Aims and Scope *Biodiversitas*, *Journal of Biological Diversity* or *Biodiversitas* encourages submission of manuscripts dealing with all aspects of biodiversity including plants, animals and microbes at the level of the gene, species, and ecosystem. Ethnobiology papers are also considered.

Article types The journal seeks original full-length: (1) **Research papers**, (2) **Reviews**, and (3) **Short communications**. Original research manuscripts are limited to 8,000 words (including tables and picture), or proportional with articles in this publication number. Review articles are also limited to 8,000 words, while Short communications should be less than 2,000 words, except for pre-study.

Submission The journal only accepts online submission, through open journal system (<https://smujo.id/biodiv/about/submissions>) or email to the editors at unsjournals@gmail.com. Submitted manuscripts should be the original works of the author(s). Please ensure that the manuscript is submitted using the *Biodiversitas* template, which can be found at (<https://biodiversitas.mipa.uns.ac.id/D/guidance.htm>). The manuscript must be accompanied by a cover letter containing the article title, the first name and last name of all the authors, a paragraph describing the claimed novelty of the findings versus current knowledge. Please also provide a list of five potential reviewers in your cover letter. Submission of a manuscript implies that the submitted work has not been published before (except as part of a thesis or report, or abstract); and is not being considered for publication elsewhere. When a manuscript written by a group, all authors should read and approve the final version of the submitted manuscript and its revision; and agree the submission of manuscripts for this journal. All authors should have made substantial contributions to the concept and design of the research, acquisition of the data and its analysis; drafting of the manuscript and correcting of the revision. All authors must be responsible for the quality, accuracy, and ethics of the work.

Ethics Author(s) must obedient to the law and/or ethics in treating the object of research and pay attention to the legality of material sources and intellectual property rights.

Copyright If the manuscript is accepted for publication, the author(s) still hold the copyright and retain publishing rights without restrictions. Authors are allowed to reproduce articles as long as they are not used for commercial purposes. For the new invention, authors are suggested to manage its patent before published.

Open access The journal is committed to free-open access that does not charge readers or their institutions for access. Readers are entitled to read, download, copy, distribute, print, search, or link to the full texts of articles, as long as not for commercial purposes. The license type is CC-BY-NC-SA.

Acceptance Only articles written in U.S. English are accepted for publication. Manuscripts will be reviewed by editors and invited reviewers (double blind review) according to their disciplines. Authors will generally be notified of acceptance, rejection, or need for revision within 1 to 2 months of receipt. Manuscripts will be rejected if the content does not in line with the journal scope, does not meet the standard quality, is in an inappropriate format, contains complicated grammar, dishonesty (i.e. plagiarism, duplicate publications, fabrication of data, citations manipulation, etc.), or ignoring correspondence in three months. The primary criteria for publication are scientific quality and biological significance. **Uncorrected proofs** will be sent to the corresponding author by email as .doc or .docx files for checking and correcting of typographical errors. To avoid delay in publication, corrected proofs should be returned in 7 days. The accepted papers will be published online in a chronological order at any time, but printed in January, April, July and October.

A charge Starting on January 1, 2017, publishing costs waiver is granted to foreign (non-Indonesian) authors who first publish the manuscript in this journal, especially for graduate students from developing countries. However, other authors are charged USD 250 (IDR 3,500,000).

Reprints The sample journal reprint is only available by special request. Additional copies may be purchased when ordering by sending back the uncorrected proofs by email. Manuscript preparation Manuscript is typed on A4 (210x297 mm²) paper size, in a single column, single space, 10-point (10 pt) Times New Roman font. The margin text is 3 cm from the top, 2 cm from the bottom, and 1.8 cm from the left and right. Smaller lettering size can be applied in presenting table and figure (9 pt). Word processing program or additional software can be used, however, it must be PC compatible, use the *Biodiversitas* template, and Microsoft Word based (.doc or .rtf, not .docx). **Scientific names** of species (incl. subspecies, variety, etc.) should be written in italics, except in italicized sentences. Scientific names (Genus, species, author), and cultivar or strain should be mentioned completely for the first time mentioning it in the body text, especially for taxonomic manuscripts. The Genus name can be shortened after first mention, except where this may generate confusion. Name of the author can be eliminated after first mentioning. For example, *Rhizopus oryzae* L. UICC 524, hereinafter can be written as *R. oryzae* UICC 524. Using trivial names should be avoided. **Biochemical and chemical nomenclature** should follow the order of the IUPAC - IUB. For DNA sequence, it is better used Courier New font. Standard chemical abbreviations can be applied for common and clear used, for example, completely written butilic hydroxyl toluene (BHT) to be BHT hereinafter. **Metric measurements** should use IS denominations, and other system should use equivalent values with the denomination of IS mentioned first. Abbreviations like g, mg, mL, etc. should not be followed by a dot.

Minus index (m-2, L-1, h-1) suggested to be used, except in things like "per-plant" or "per-plot". **Mathematical equations** can be written down in one column with text, in that case can be written separately. **Numbers** one to ten are written in words, except if it relates to measurement, while values above them written in number, except in early sentence. The fraction should be expressed in decimal. In the text, it should be used "%" rather than "percent". Avoid expressing ideas with complicated sentence and verbiage, and used efficient and effective sentence.

The **Title** of the article should be written in compact, clear, and informative sentence, preferably not more than 20 words. Author name(s) should be completely written. Name and institution address should also be completely written with street name and number (location), postal code, telephone number, facsimile number, and email address. Manuscripts written by a group, author for correspondence along with address is required. First page of the manuscript is used for writing above information.

The **Abstract** should not be more than 200 words. Include between five and eight **Keywords**, using both scientific and local names (if any), research themes, and special methods which used; and sorted from A to Z. All important **abbreviations** must be defined at their first mention. Running title is about five words. The **Introduction** is about 400-600 words, covering the background and aims of the research. **Materials and Methods** should emphasize on the procedures and data analysis. **Results and Discussion** should be written as a series of connecting sentences, however, for manuscript with long discussion should be divided into subtitles. Thorough discussion represents the causal effect mainly explains for why and how the results of the research were taken place, and do not only re-express the mentioned results in the form of sentences. A **Conclusion** should be given at the end of the discussion. **Acknowledgments** are expressed in brief; all sources of institutional, private and corporate financial support for the work must be fully acknowledged, and any potential conflicts of interest must be noted.

Figures and Tables of three pages maximum should be clearly presented. Include a label below each figure, and a label above each table (see example). Colored figures can only be accepted if the information in the manuscript can lose without those images; chart is preferred to use black and white images. Author could consign any picture or photo for the front cover, although it does not print in the manuscript. All images property of others should be mentioned source. There is no **Appendix**, all data or data analysis are incorporated into Results and Discussions. For broad data, supplementary information can be provided on the website.

References In the text give the author names followed by the year of publication and arrange from oldest to newest and from A to Z. In citing an article written by two authors, both of them should be mentioned, however, for three and more authors only the first author is mentioned followed by et al., for example: Saharjo and Nurhayati (2006) or (Boonkerd 2003a, b, c; Sugiyarto 2004; El-Bana and Nijs 2005; Balagadde et al. 2008; Webb et al. 2008). Extent citation as shown with word "cit" should be avoided. Reference to unpublished data and personal communication should not appear in the list but should be cited in the text only (e.g., Rifai MA 2007, pers. com. (personal communication); Setyawan AD 2007, unpublished data). In the reference list, the references should be listed in an alphabetical order. Names of journals should be abbreviated. Always use the standard abbreviation of a journal's name according to the **ISSN List of Title Word Abbreviations** (www.issn.org/2-22661-LTWA-online.php). Please include DOI links for journal papers. The following examples are for guidance.

Journal:

Saharjo BH, Nurhayati AD. 2006. Domination and composition structure change at hemic peat natural regeneration following burning; a case study in Pelalawan, Riau Province. *Biodiversitas* 7: 154-158. DOI: 10.13057/biodiv/d070213

Book:

Rai MK, Carpinella C. 2006. Naturally Occurring Bioactive Compounds. Elsevier, Amsterdam.

Chapter in book:

Webb CO, Cannon CH, Davies SJ. 2008. Ecological organization, biogeography, and the phylogenetic structure of rainforest tree communities. In: Carson W, Schnitzer S (eds) *Tropical Forest Community Ecology*. Wiley-Blackwell, New York.

Abstract:

Assaeed AM. 2007. Seed production and dispersal of *Rhazya stricta*. 50th annual symposium of the International Association for Vegetation Science, Swansea, UK, 23-27 July 2007.

Proceeding:

Alikodra HS. 2000. Biodiversity for development of local autonomous government. In: Setyawan AD, Sutarno (eds.) *Toward Mount Lawu National Park; Proceeding of National Seminary and Workshop on Biodiversity Conservation to Protect and Save Germplasm in Java Island*. Universitas Sebelas Maret, Surakarta, 17-20 July 2000. [Indonesian]

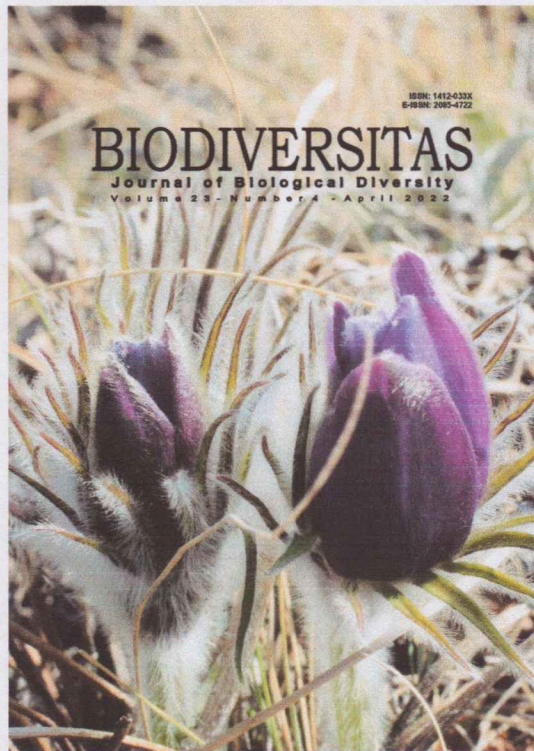
Thesis, Dissertation:

Sugiyarto. 2004. Soil Macro-invertebrates Diversity and Inter-Cropping Plants Productivity in Agroforestry System based on Sengon. [Dissertation]. Universitas Brawijaya, Malang. [Indonesian]

Information from internet:

Balagadde FK, Song H, Ozaki J, Collins CH, Barnet M, Arnold FH, Quake SR, You L. 2008. A synthetic *Escherichia coli* predator-prey ecosystem. *Mol Syst Biol* 4:187. www.molecularsystembiology.com

Home (<https://smujo.id/biodiv/index>) / Archives (<https://smujo.id/biodiv/issue/archive>) / Vol. 23 No. 5 (2022)



(<https://smujo.id/biodiv/issue/view/339>)

Vol. 23 No. 5 (2022)

Full Issue

Front Cover (<https://smujo.id/biodiv/issue/view/339/203>)

Articles

Population density survey of white-bearded gibbons (*Hylobates albibarbis*) in high conservation value forest area of palm oil plantation company, Central Kalimantan, Indonesia
(<https://smujo.id/biodiv/article/view/10691>)

SANDY NURVIANTO, DWI T. ADRIYANTI, FAUZI HAMDAN, JOKO TRIYANTO, AGUS DARMANTO

PDF (<https://smujo.id/biodiv/article/view/10691/5723>)

Bird diversity in three *Ficus* species in the Kuningan Lowland Forest,

West Java, Indonesia (<https://smujo.id/biodiv/article/view/10781>)

YAYAN HENDRAYANA, EMING SUDIANA, ILHAM ADHYA, AGUS YADI ISMAIL

PDF (<https://smujo.id/biodiv/article/view/10781/5724>)

Diversity of Hymenoptera parasitoid species in rice cultivation and their correlation with environmental factors in tidal swamp land (<https://smujo.id/biodiv/article/view/10739>)

ZAHLUL IKHSAN

PDF (<https://smujo.id/biodiv/article/view/10739/5736>)

The behavior of catfish traders on the food safety perspective in Malang Markets, Indonesia (<https://smujo.id/biodiv/article/view/10480>)

HARTATI KARTIKANINGSIH, YAHYA, DWI SETIJAWATI, HARRIS IMAM FATHONI

PDF (<https://smujo.id/biodiv/article/view/10480/5725>)

Diversity of flies (Diptera: Brachycera) in breeding farms in the Kabylia region (North-central Algeria), and identification of some myiaseginic species (<https://smujo.id/biodiv/article/view/10362>)

OUIZA OURRAD, DJAMILA SADOUDI-ALI AHMED, SID-ALI SADOU, KHADIJA BOUZRARF, BOUTAÏNA BELQAT

PDF (<https://smujo.id/biodiv/article/view/10362/5726>)

Bioclimatic modeling for the prediction of the suitable regional geographical distribution of selected bright-spored myxomycetes in the Philippine archipelago (<https://smujo.id/biodiv/article/view/10613>)

JAMES EDUARD LIMBO-DIZON, KING JOSHUA ALMADRONES-REYES, SITTIE AISHA B. MACABAGO, NIKKI HEHERSON A. DAGAMAC

PDF (<https://smujo.id/biodiv/article/view/10613/5706>)

The relationship between seagrass abundance, distribution and the abiotic factors in Big Gifton and Abu Minqar islands, Red Sea, Egypt (<https://smujo.id/biodiv/article/view/10746>)

MOHAMED A.W.S. EBEAD, HUSSEIN N.M. HUSSEIN, HASSANIEN GOMAA, MOHAMED ABDELMOTTALEB, ALDOUSHY MAHDY

PDF (<https://smujo.id/biodiv/article/view/10746/5737>)

The potential of *Lactobacillus buchneri* isolated from spontaneous rabbit meat fermented - bekasam against *Salmonella typhimurium* by in vivo

Additional distribution records of butterflies (Lepidoptera: Rhopalocera) with seven species new to Nepal
(<https://smujo.id/biodiv/article/view/11065>)

K.C. SAJAN, ANISHA SAPKOTA

PDF (<https://smujo.id/biodiv/article/view/11065/5784>)

Ginger family from Bueng Kan Province, Thailand: Diversity, conservation status, and traditional uses (<https://smujo.id/biodiv/article/view/11074>)

AREERAT RAGSASILP, PIYAPORN SAENSOUK, SURAPON SAENSOUK

PDF (<https://smujo.id/biodiv/article/view/11074/5780>)

Application of sexual dimorphism-derived variation in morphometrics and intraspecific interaction likelihood in Sunda pangolin (*Manis javanica*) to increase species encounter rates
(<https://smujo.id/biodiv/article/view/10937>)

NOVRIYANTI, MARIANA TAKANDJANDJI

PDF (<https://smujo.id/biodiv/article/view/10937/5785>)

Short Communication: Assessment of cogongrass (*Imperata cylindrica* (L.) P.Beauv.) genetic variation in Java, Indonesia using atpB-rbcL and trnL-F intergenic spacer (<https://smujo.id/biodiv/article/view/10004>)

AGUS HERY SUSANTO, MURNI DWIATI

PDF (<https://smujo.id/biodiv/article/view/10004/5786>)

Short Communication: First report of *Nectria haematococca* causing a moler disease on shallots in West Nusa Tenggara, Indonesia
(<https://smujo.id/biodiv/article/view/10535>)

MARIANI, DEWA NGURAH SUPRAPTA, I MADE SUDANA, I GEDE RAI MAYA TEMAJA, I MADE SUDANTHA

PDF (<https://smujo.id/biodiv/article/view/10535/5787>)

The building size effect on bird community assemblages in tropical urban ecosystem (<https://smujo.id/biodiv/article/view/10695>)

ABDIEL ADAM UTAMA, SANDY NURVIANTO

PDF (<https://smujo.id/biodiv/article/view/10695/5788>)

Bird diversity in three *Ficus* species in the Kuningan Lowland Forest, West Java, Indonesia

YAYAN HENDRAYANA^{1,✉}, EMING SUDIANA², ILHAM ADHYA¹, AGUS YADI ISMAIL¹

¹Department of Forestry, Faculty of Forestry, Universitas Kuningan. Jl. Cut Nyak Dhien 36A, Cijoho, Kuningan 45513, West Java, Indonesia.
Tel./fax. +62-232-875-124, ✉email: yayan.hendrayana@uniku.ac.id

²Faculty of Biology, Universitas Jenderal Soedirman. Jl. Dr. Soeparno 63, Purwokerto, Banyumas 53122, Central Java, Indonesia

Manuscript received: 19 March 2022. Revision accepted: 13 April 2022.

Abstract. Hendrayana Y, Sudiana E, Adhya I, Ismail AY. 2022. Bird diversity in three *Ficus* species in the Kuningan Lowland Forest, West Java, Indonesia. *Biodiversitas* 23: 2255-2261. Frugivorous birds are an important group in tropical forests, as they promote a wide diversity of plant species and animal communities via tree seed dispersal. The presence of these avifauna depends on food, such as fruits provided by *Ficus* spp. This study examined the diversity of birds in three species of fruiting *Ficus* trees located in a secondary, natural lowland forest in Mount Tilu, Kuningan, West Java, Indonesia. Bird numbers in *Ficus benjamina* L., *Ficus sinuata* Thunb., and *Ficus kurzii* King were determined using the concentration count method. The data were analyzed using the Shannon–Wiener diversity index (H'), evenness index (E), and dominance index (Simpson's D). The results showed diversity index values of $H' = 2.255$, $E = 0.353$, and $D = 0.8342$ for *F. benjamina*; $H' = 2.305$, $E = 0.5014$, and $D = 0.8376$ for *F. sinuata*; and $H' = 2.305$, $E = 0.5014$, and $D = 0.8694$ for *F. kurzii*. The bird species with the highest number of individuals was *Pycnonotus simplex* Lesson, 1839 (378 individuals, 20.8%), followed by *Megalaima australis* (Horsfield, 1821) (320, 17.7%), *Pericrocotus flammeus* (J.R.Forster, 1781) (203, 11.2%), *Dicaeum trigonostigma* (Scopoli, 1786) (116, 6.4%) and *Pycnonotus melanicterus* (Gmelin, 1789) (109, 6.01%). By (Horsfield, 1821) knowing the important role of ficus trees as a source of food for various species of birds, this information becomes important and can be used by forest managers to support biodiversity conservation, especially bird conservation.

Keywords: Avifauna, conservation, frugivorous, *Ficus* spp., Mount Tilu

INTRODUCTION

Forest destruction in Southeast Asian tropical rainforests is mostly due to anthropogenic pressure and logging activity. Among its impacts is a decrease in biodiversity, including that of birds (Atikah et al. 2021), as their species diversity is largely determined by the composition of the landscape, especially forest cover (Li et al. 2019, 2020). Khan (2017), Shah and Sharma (2022), and Jones et al. (2021) found that forest cover greatly affects biodiversity. Then, Khamcha et al. (2014), Siri et al. (2019), and Rurangwa et al. (2021) demonstrated that forest landscapes influence not only bird species diversity but also their functional and phylogenetic diversity. Bird species diversity is also influenced by microclimate conditions and variable habitats (Rajpar and Zakaria 2011; Praptiwi et al. 2019).

Decreased diversity of bird species, especially frugivorous birds in forests, has consequences for the respective ecosystem as a whole (Farwig et al. 2017), given the important role of frugivorous birds (Schupp et al. 2017; Qutián et al. 2019) as seed dispersers for various types of plants (Imai et al. 2017; Li et al. 2019, 2020). In tropical forests, most tree species rely on birds for seed dispersal, and many birds use fruits as a food resource. Accordingly, plant-frugivore interactions affect population dynamics and persistence in ecological communities (Lavabre et al. 2016). These interactions often involve many bird species, resulting in of interacting plants and birds differing in their

roles in determining network organization (Corlett 2017). Network organization reflects the structure of community interactions, which may impact both ecological and evolutionary dynamics. Species with a large influence on network organization may be particularly important for species persistence (Vidal et al. 2014). Thus, differences in frugivorous bird morphology and behavior shape plant seed distribution patterns. For instance, large-bodied birds are generally recognized as keystone species because they require more food than small birds (Marjakangas et al. 2020). Food type selection is also an important attribute for frugivorous birds that determines seed dispersal (Li et al. 2019; Tobias et al. 2020).

Among the most important tree species in the tropical forests of Southeast Asia is *Ficus* spp., because most members are keystone species. These trees inhabit tropical to subtropical zones (Lomáscolo et al. 2010). The *Ficus* genus includes five major species of dicotyledon plants that are always present in Indo-Australasian and neotropical tropical forests and lowland tropical rainforests (Daru et al. 2015). *Ficus* spp. is an important food source for frugivorous birds in the tropics, as their fruits provide a source of food after the fruiting seasons of other species end (Bleher et al. 2003). Some 990 bird species use *Ficus* spp. as a food source (Sreekar et al. 2010), including 42% of the bird species in Kalimantan, Indonesia (Atikah et al. 2021). *Ficus* trees are also a source of alternative food for most tropical frugivores and omnivorous tropical birds (Pandey et al. 2021). For example, Lambert and Marshall

(1991) recorded approximately 60 bird species feeding on figs in the Malaysian lowland rainforest where the *Ficus* crop was generally depleted in less than 1 week (Vollstädt et al. 2020).

Studies have shown that *Ficus* spp. are visited by various bird species. For example, *F. thoningii* in lowland tropical forests in Southern Africa was visited by 26 bird species, as it fruits year-round, even when the fruits of other tree species are scarce (Bleher et al. 2003). Moreover, Kurnianto et al. (2017) found that 33 of 46 recorded bird species were frugivorous and visited large *Ficus* trees in the Tengger Mountain in Malang, East Java, Indonesia. Meanwhile, Pradana et al. (2018) identified 29 species of frugivorous birds on *Ficus* trees. Frugivore diversity was shown to correlate with the diversity and abundance of forage trees (Sreekar et al. 2010; Caughlin et al. 2012; Kiros et al. 2018). In addition, frugivorous migratory birds choose stopover locations based on food availability (Wolfe et al. 2017). According to Sanitjan and Chen (2009), the diversity of frugivorous bird species visiting *Ficus* trees is influenced by tree and canopy size. In their study in the Ungaran Mountain, Central Java, Indonesia, Priyono et al. (2021) found that *F. involucrata* was the *Ficus* species most often visited by birds. Furthermore, *F. glaberrima*, *F. macrocarpa*, and *F. involucrata*, which have smaller fruits, were visited more often (681 visits) than *Ficus* species with medium-sized fruits, such as *F. villosa*, *F. drupacea*, and *F. padana* (392 visits); overall, more bird visits were made to *Ficus* spp. with smaller fruit sizes. Similarly, frugivorous bird diversity was shown to

correlate strongly with *Ficus* fruit diversity (Zietsman et al. 2019).

The lowland forest of Mount Tilu, Indonesia, is a secondary natural forest with high plant diversity. Hendrayana et al. (2019) found 12 *Ficus* spp.: *F. sundaica*, *F. virens*, *F. calophylla*, *F. kurzii*, *F. benjamina*, *F. globosa*, *F. sinuate*, *F. variegata*, *F. glandulifera*, *F. copiosa*, *F. elastica*, and *F. ampelas*. This high diversity may account for the high diversity of frugivorous birds, but the role of individual *Ficus* spp. in providing food for different bird species is unknown. Therefore, the present study examined the diversity of bird species in three *Ficus* tree species in Indonesia. The results will assist in developing measures to support bird species conservation.

MATERIALS AND METHODS

Study area

This study was conducted from November 2020 to February 2021 in the forest of Mount Tilu, Indonesia (07°06'12.2"-07°07'48.1" N, 108°41'47.7"-10°41'39.0" E). This area lies within Cimara Village, Cibingbin District, and Jabranti Village, Karangancana District, Kuningan West Java, Indonesia. Mount Tilu is covered by lowland secondary forest dominated by members of the Euphorbiaceae and Moraceae (Hendrayana et al. 2019). The study site covers an altitude of 600-900 m above sea level (Figure 1).

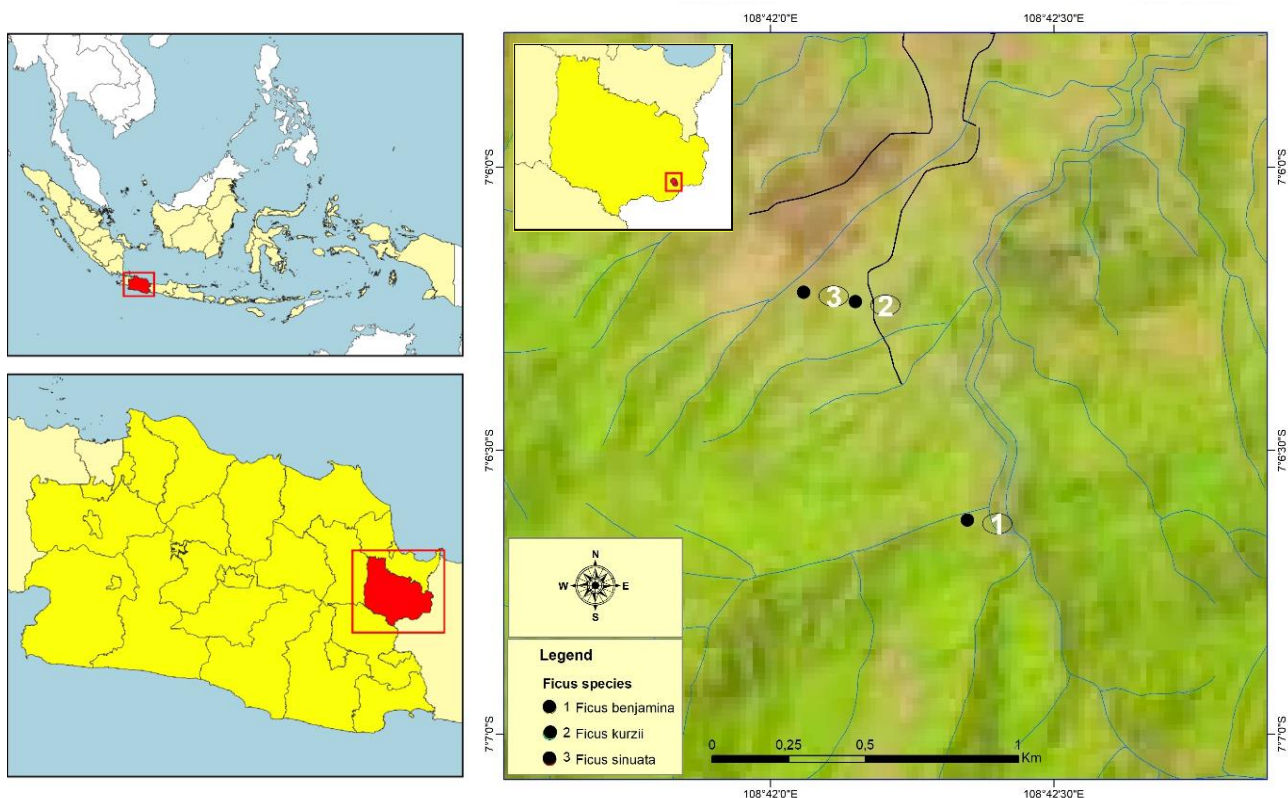


Figure 1. Map of the study area and sampling location in Kuningan lowland forest, West Java, Indonesia

Procedures

The tools used in this study included a binocular camera, timer, calculator, tally sheet and writing utensils, camera, and bird identification guide (MacKinnon et al. 2010). Observations were made using the concentration count method, which according to Lekipiou and Nanlohy (2018), can be applied to determine the population of birds in the wild whose lifestyle is concentrated in a specific place it can be observed silently by the observer. Within the study site, birds were observed in three *Ficus* spp.: *F. benjamina*, *F. sinuata*, and *F. kurzii*. The research was conducted from November 2020-February 2021, based on the fruiting season of 3 species of *Ficus*. Observations were made for 10 days of fruiting on three sample trees. Observations were made on each sample tree for 10 hours from 7.00 am to 5.00 pm, each hour, only observations were made for 30 minutes by counting the number of individuals and the number of bird species present. Each tree is observed by an observer trained as a bird watcher, so a total of 3 observers, at the time of observation, the observer's position is protected from the view of the observed birds. Each observer was provided with a camera, a bird identification book (MacKinnon et al. 2010), and a bird voice recorder. However, when the sampling took place, it generally rained at the location, so observations were only made until 15.00 in the afternoon. During the observation period, the bird species, and the number of individual birds, were recorded.

Sampling method

Sampling location selection using the purposive method, namely determining the sampling location based on the existing ficus tree species. Based on the presence of figs trees, three sampling locations were found, namely *F. benjamina*, *F. sinuata*, and *F. kurzii*.

Description of the three studied *Ficus* species

1. *Ficus benjamina*, concentrated at 7°6'37.35" S and 108°42'20.86" E, is a tall tree with a typical height of 15 m and a diameter of 100 cm. It bears fruit 2 to 4 times a year (Corlett 1984). The trees in this study were located at the border between forest and rice fields in a valley and close to a river (Figure 2).
2. *Ficus sinuata*, concentrated at 7°6'13.27" S and 108°42'3.5" E, has a typical height of 13 m and diameter of 60 cm and bears fruit three times a year. The trees in this study were located along the border between a production forest and a protected forest (Figure 3)
3. *Ficus kurzii*, which is located at a geographical position of 7°6'13.27"S and 108°42'3.5"E. Habitus is a tall tree up to more than 30 meters. Coarse leaves arranged in a spiral, elliptical to oval. Paired fruits appear in the axils of the leaves, 1-2 cm in diameter, dark red, purple or black (Mulyani et al. 2021) (Figure 4).

Data analysis

The total diversity of the birds visiting the three investigated *Ficus* species was analyzed using the Shannon-Wiener index (H'), an indicator of the relationship between species richness and species abundance at a given location. The index is calculated as follows (Magurran 2004):

$$H' = - \sum P_i \ln P_i$$

Where P_i is the number of birds per species divided by the total number of species.

The evenness index (E) is used to determine the evenness of the number of individuals that make up a community. It is calculated from H' as follows (Magurran 2004):

$$E' = \frac{H'}{\ln(S)}$$



Figure 2. *Ficus benjamina*: A. Tree, B. Fruit



Figure 3. *Ficus sinuata*: A. Tree, B. Fruit



Figure 4. *Ficus kurzii*: A. tree, B. fruit

Simpson's dominance index (D) ranges from 0 to 1, where a smaller value indicates that there is no dominant species and a larger value indicates the dominance of a species (Odum 1993):

$$D = \sum (n_i/N)^2$$

Where n_i is the number of individuals per species and N is the number of individuals of all species.

Differences in bird diversity among the three *Ficus* species were calculated based on the beta-diversity, as expressed by the Morisita-Horn similarity index.

RESULTS AND DISCUSSION

Bird diversity among *Ficus* species

During 30 days of observation of the three *Ficus* species, 1,811 birds belonging to 21 families and 43 species were recorded (Table 1). The values of H', E, and D were 2.255, 0.353, and 0.8342 at *F. benjamina*, 2.305, 0.5014, and 0.8376 at *F. sinuata*, and 2.305, 0.5014, and 0.8694 at *F. kurzii* respectively. The largest number of birds were found at *F. benjamina* (28 species), followed by *F. sinuata* (20 species) and *F. kurzii* (19 species). This finding agrees with other studies of bird diversity in *Ficus* trees. For instance, in their study of 12 *Ficus* species in Nigeria, Daru et al. (2015) identified 48 bird species, with 12-48 species visiting each tree species. Meanwhile, in the Tengger Mountains of East Java, (Kurnianto et al. 2017) reported 46 bird species visiting one *Ficus* tree species. Rahayuningsih et al. (2020) and Priyono et al. (2021) studied bird diversity by surveying *Ficus* trees based on fruit size in the Ungaran Mountain, Central Java, Indonesia, and recorded 29 bird species from 16 families. In urban areas, *Ficus* trees provided foraging and nesting sites for 12 bird species (Pradana et al. (2018). Factors driving the usage of a particular *Ficus* species might include tree density and fruit phenology, color, nutritional value, and size (Bleher et al. 2003; Galletti et al. 2016). Differences in the number of visiting bird species may be due to differences in tree habitus, fruit shape, and fruit color. Almanaz-Núñez et al. (2021) suggested that tree structure, fruit color, and fruit size affect the presence of frugivorous bird species in trees in the forests of Mexico. In Southeast Asia, frugivorous bird diversity was influenced by fruit size and tenderness, with more types of fruits consumed by birds with larger body sizes than by small birds (Imai et al. 2017).

Bird species composition

Of the 22 bird families identified, nine were represented by more than one species. The family with the most species was Pycnonotidae (six species), followed by Dicaeidae, Columbidae, and Nectariniidae (four species each), Megalaimidae, Campephagidae, and Cuculidae (three species each), and Sylviidae and Dicruridae (two species each); other families consisted of only one species each.

The six Pycnonotidae species were *Pycnonotus simplex*, *P. melanicterus*, *P. brunneus*, *P. aurigaster*, *P. atriceps*, and *P. plumosus*; six species were found on *F. benjamina*, five on *F. sinuata*, and four on *F. kurzii*. This distribution reflects the features of the Pycnonotidae family, which consists of generalist frugivorous birds with a flexible feeding behavior that allows them to eat fruits from a broad range of plants (Li et al. 2019, 2020). Members of the Pycnonotidae are an important component of tropical rainforest ecosystems and often exhibit differences associated with vegetation structure and composition. They are ecologically diverse and occupy a wide array of habitats. Corlett (2017) and Shakya and Sheldon (2017) showed that Pycnonotidae is an important frugivorous family in forest areas in Southeast Asia, as these birds disperse a wide variety of forest plant seeds.

Bird species depend on vegetation structure and composition (e.g., trees, shrubs, and herbs) as well as food resources for their survival and reproduction, and are sensitive to habitat alterations (Azman et al. 2011; Rajpar and Zakaria 2011; Khan 2017; Siri et al. 2019; Shah and Sharma 2022). Family Columbidae consists of 4 species found, this species belongs to the category of species that eat fruit and seeds, so it is easily found on figs trees (Adang, et al. 2008), Family Megalaimidae with 3 species, namely: *Megalaima australis*, *M. javensis* and *M. armillaris*. According to Chang et al. (2012), Asian barbets are primarily frugivorous, feeding on a variety of tree fruits and playing an important role in seed dispersal, which accounts for their frequent detection on *Ficus* trees (Rajpar and Zakaria 2011; Trounov and Vasilieva 2014; Rahayuningsih et al. 2020).

Discussion

Of the 44 bird species found in *Ficus* trees, four occurred in all three species, 13 only in *F. benjamina* and *F. sinuata* ($I_{SM} = 0.332$), six only in *F. benjamina* and *F. kurzii* ($I_{SM} = 0.3442$), and four only in *F. sinuata* and *F. kurzii* ($I_{SM} = 0.1918$). Nine species were unique to *F. benjamina*, six to *F. sinuata*, and nine to *F. kurzii*. These differences may result from different vegetation structures or habitat types around the trees (Imai et al. 2017; Kurnia et al. 2021). Chen (2018) showed that the habitat of trees providing food for birds affects the diversity of bird species visiting the trees, and forage trees surrounded by shrubs tend to have a higher bird species diversity than forage trees in secondary forests. In their study of former tea plantations in West Java, (Partasmita et al. 2017) recorded a higher number of bird species in food-providing trees located adjacent to shrubs. Furthermore, the diversity of tree species in a habitat will also affect the diversity of visiting bird species (Ayat and Tata 2015; Rohman et al. 2020). In this study, *F. benjamina* trees were located on the border between forest and paddy fields such that the trees served as a perching place for birds to either look for food or rest. Similarly, *F. sinuata* trees were located at the border between the production forest and secondary forest.

Table 1. Bird species richness and the total number of the individual at three *Ficus* species

Family	Species	Local Name	<i>Ficus benjamina</i>	<i>Ficus sinuata</i>	<i>Ficus kurzii</i>	Total	Feeding guilds
Pycnonotidae	<i>Pycnonotus simplex</i>	Merbah corok-corok	279	28	71	378	Frugivore, Insectivore
	<i>Pycnonotus atriceps</i>	Cucak kuricang	22	-	6	28	Frugivore, Insectivore
	<i>Pycnonotus melanicterus</i>	Cucak kuning	108	1	-	109	Frugivore, Insectivore
	<i>Pycnonotus brunneus</i>	Merbah mata-merah	49	6	2	57	Frugivore, Insectivore
	<i>Pycnonotus aurigaster</i>	Cucak kutilang	27	18	-	45	Frugivore, Insectivore
	<i>Pycnonotus plumosus</i>	Merbah belukar	9	-	1	10	Frugivore, Insectivore
Dicaeidae	<i>Dicaeum trigonostigma</i>	Cabai bunga-api	50	32	34	116	Frugivore
	<i>Dicaeum concolor</i>	Cabai polos	11	-	33	44	Frugivore
	<i>Prionochilus percussus</i>	Pentis pelangi	1	-	-	1	Frugivore
	<i>Dicaeum trochileum</i>	Cabai jawa	-	1	-	1	Frugivore
Columbidae	<i>Macropygia emiliana</i>	Uncal bauu	4	1	-	5	Grainivore
	<i>Treron griseicauda</i>	Punai pengantin	3	-	-	3	Frugivore
	<i>Streptopelia tranquebarica</i>	Tekukur merah	2	-	-	2	Grainivore
	<i>Treron vernans</i>	Punai gading	-	76	-	76	Frugivore
Nectariniidae	<i>Aethopyga siparaja</i>	Burung-madu sepah-raja	7	-	-	7	Nectarivore
	<i>Aethopyga mystacalis</i>	Burung-madu jawa	2	-	-	2	Nectarivore
	<i>Nectarinia jugularis</i>	Burung-madu sriganti	-	-	12	12	Nectarivore
	<i>Arachnothera affini</i>	Pijantung gunung	-	-	6	6	Nectarivore
Megalaimidae	<i>Megalaima australis</i>	Takur tenggeret	80	240	-	320	Frugivore
	<i>Megalaima javensis</i>	Takur tulung-tumpuk	2	-	22	24	Frugivore
	<i>Megalaima armillaris</i>	Takur tohtor	24	49	-	73	Frugivore
Campephagidae	<i>Pericrocotus flammeus</i>	Sepah hutan	97	35	71	203	Insectivore
	<i>Hemipus hirundinaceus</i>	Punai gading	32	19	-	51	Insectivore
	<i>Tephrodornis gularis</i>	Jinjing petulak	1	-	-	1	Insectivore
Cuculidae	<i>Phaenicophaeus javanicus</i>	Kadalan kembang	-	14	-	14	Insectivore
	<i>Phaenicophaeus curvirostris</i>	Kedalan birah	3	-	-	3	Insectivore
	<i>Surniculus lugubris</i>	Kedasi hitam	-	6	-	6	Insectivore
	<i>Orthotomus ruficeps</i>	Cinene kelabu	4	-	-	4	Insectivore
Sylviidae	<i>Orthotomus sutorius</i>	Cinene pisang	2	-	-	2	Insectivore
	<i>Dicrurus leucophaeus</i>	Srigunting kelabu	1	-	14	15	Insectivore
Dicruridae	<i>Dicrurus macrocercus</i>	Srigunting hitam	3	54	-	57	Insectivore
	<i>Turdinus sepiaria</i>	Pelanduk semak	-	-	16	16	Insectivore
Pellorneidae	<i>Aegithina tiphia</i>	Cipoh kacat	3	34	-	37	Grainivore
Monarchidae	<i>Hypothymis azurea</i>	Kehicap ranting	1	2	-	3	Insectivore
Zosteropidae	<i>Zosterops flavus</i>	Kacamata jawa	-	30	-	30	Frugivore, Insectivore
Psittacidae	<i>Loriculus pusillus</i>	Serindit jawa	-	27	3	30	Insectivore
Accipitridae	<i>Spilornis cheela</i>	Elang-ular bido	-	9	-	9	Carnivore
Timaliidae	<i>Mixornis flavicollis</i>	Ciung-air jawa	-	-	24	24	Insectivore
Halcyonidae	<i>Halcyon cyanoventris</i>	Cekakak jawa	-	-	6	6	Insectivore
Estrildidae	<i>Lonchura leucogastroides</i>	Bondol jawa	-	-	5	5	Grainivore
Eurylaimidae	<i>Eurylaimus javanicus</i>	Sempur-hujan raja	-	-	1	1	Frugivore
Meropidae	<i>Merops leschenaultia</i>	Kirik-kirik senja	-	-	1	1	Insectivore
Pittidae	<i>Pitta guajana</i>	Paok pancawarna	-	-	1	1	Insectivore
	Taxa_S		28	20	19		
	Individuals		827	682	329		
	Shannon_H		2,255	2,305	2,328		
	Evenness_e^H/S		0,353	0,5014	0,5399		
	Simpson_1-D		0,8342	0,8376	0,8694		

As shown by Bleher et al. (2003), Kurnianto et al. (2017), and (Pradana et al. 2018), the birds found in the three types of *Ficus* trees belonged to different feeding guilds, with insectivores accounting for 17 species, frugivorous–insectivorous birds for eight species, frugivores for nine species, granivores for five species, for four species, and carnivores for one species. The larger number of insectivorous birds compared to other feeding guilds can be explained because most of these birds are bush birds. Moreover, insects are much more abundant than other food types and are readily found in various parts of

plants, such that insects commonly serve as the main food or as an alternative when the availability of other food sources is reduced (Partasasmita et al. 2009). *Ficus* spp. is inhabited by insects recognized as both pests and pollinators. In their study of insects on *F. benjamina* trees in Xishuangbanna, China, Yang et al. (2008) found 65 species belonging to 40 genera and 23 families. According to Mifsud et al. (2012), some insects are found in *Ficus* trees and use *Ficus* trees as their main food source throughout their adult development.

Based on the abundance data, only five bird species were dominant in the three investigated *Ficus* species. This result was confirmed by the D values of 0.8342 in *F. benjamina*, 0.8376 in *F. sinuata*, and 0.8694 in *F. kurzii*. Of the 44 bird species we detected, the species with the highest number of individuals was *P. simplex* (378 individuals, 20.8%), followed by *M. australis* (322, 17.7%), *Pericrocotus flammeus* (203, 11.2%), *Dicaeum trigonostigma* (116, 6.4%) and *P. melanicterus* (109, 6.01%). Fourteen species accounted for 1-6%, and 23 for < 1%. Most of the dominant species were found in *F. benjamina*, except for *D. trigonostigma*, which was highly dominant in *F. sinuata*. The results of this study may be due to the bird's preference for tree heights and surrounding habitats. However, the results of this study differ from those of Azman et al. (2011), which found that the number of dominant species was higher in forest habitats than in paddy fields, as well as the number of unique species, i.e., species occupying only one tree. Therefore, the results of this study are very important for designing bird conservation in an area. Bird conservation in a forest area can be based on ficus trees' diversity and variations in fruiting time. Forest managers can use the method of planting *Ficus* trees with different species as intermediaries in the managed forest area.

In conclusion, our study showed that three *Ficus* species supported 43 bird species, and different bird species favored each tree species. Therefore, conservation managers can use the results of this study to enact measures to increase bird diversity in the Mount Tilu protected forest area of Indonesia.

ACKNOWLEDGEMENTS

The authors thank the Rector of the Universitas Kuningan, West Java, Indonesia for the financial support for this research, we also thank the dean of the Faculty of Biology, Universitas Jenderal Sudirman, Purwokerto, Central Java, Indonesia for the research collaboration carried out.

REFERENCES

- Almazán-Núñez RC, Alvarez AEA, Morales SP, Godínez RR. 2021. Fruit size and structure of zoochorous trees: Identifying drivers for the foraging preferences of fruit-eating birds in a Mexican successional dry forest. *Animals* (Basel) 11: 3343. DOI: 10.3390/ani11123343.
- Atikah SN, Yahya MS, Norhisham AR, Kamarudin N, Sanusi R, Azhar B. 2021. Effects of vegetation structure on avian biodiversity in a selectively logged hill dipterocarp forest. *Glob Ecol Conserv* 28: e01660. DOI: 10.1016/j.gecco.2021.e01660.
- Ayat A, Tata HL. 2015. Diversity of birds across land use and habitat gradients in forests, rubber agroforests and rubber plantations of North Sumatra. *Indones J For Res* 2: (2) 103-120. DOI: 10.20886/ijfr.2015.2.2.103-120.
- Azman NM, Latip NSA, Mohd Sah SA, Akil MAMM, Shafie NJ, Khairuddin NL. 2011. Avian diversity and feeding guilds in a secondary forest, an oil palm plantation and a paddy field in riparian areas of the Kerian River Basin, Perak, Malaysia. *Trop Life Sci Res* 22 (2): 450-64.
- Bleher B, Potgieter CJ, Johnson DN, Bdhning K. 2003. The importance of figs for frugivores in a South African coastal forest. *J Trop Ecol* 19: 375-386. DOI: 10.1017/S0266467403003420.
- Caughlin TT, Ganesh T, Lowman MD. 2012. Sacred fig trees promote frugivore visitation and tree seedling abundance in South India. *Curr Sci* 102 (6): 918-922.
- Chang S-Y, Lee Y-F, Kuo Y-M, Chen J-H. 2012. Frugivory by Taiwan barbets (*Megalaima nuchalis*) and the effects of de-inhibition and scarification on seed germination. *Canad J Zool* 90 (5): 640-650. DOI: 10.1139/z2012-030.
- Corlett RT. 2017. Frugivory and seed dispersal by vertebrates in tropical and subtropical Asia: An update. *Glob Ecol Conserv* 11: 1-22. DOI: 10.1016/j.gecco.2017.04.007.
- Daru B H, Yessoufou K, Nuttman C, Abalaka J, Leventis AP. 2015. A preliminary study of bird use of fig *Ficus* species in Amurum Forest Reserve, Nigeria. *Malimbus* 37: 1-15.
- Farwig N, Schabo DG, Albrecht J. 2017. Trait-associated loss of frugivores in fragmented forest does not affect seed removal rates. *J Ecol* 105 (1): 20-28. DOI: 10.1111/1365-2745.12669.
- Gagetti BL, Piratelli AJ, Rodrigues FCM. 2016. Fruit color preference by birds and applications to ecological restoration. *Braz J Biol* 76 (4): 955-966. DOI: 10.1590/1519-6984.05115.
- Hendrayana Y, Widodo P, Kusmana C, Widhiono I. 2019. Diversity and distribution of figs (*Ficus* spp.) across altitudes in Gunung Tilu, Kuningan, West Java, Indonesia. *Biodiversitas* 20 (6): 1568-1574. DOI: 10.13057/biodiv/d200612.
- Imai H, Nakashizuka T, Oguro M. 2017. Environmental factors affecting the composition and diversity of the avian community in Igune, a traditional agricultural landscape in Northern Japan. *J Ecol Environ* 41: 8. DOI: 10.1186/s41610-017-0027-2.
- Jones HH, Barreto E, Murillo O, Robinson S K. 2021. Turnover-driven loss of forest-dependent species changes avian species richness, functional diversity, and community composition in Andean forests fragments. *Glob Ecol Conserv* 32: e01922. DOI: 10.1016/j.gecco.2021.e01922.
- Khamcha D, Savini T, Westcott DA, McKeown D, Brockelman WY, Chimchome W, Gale GA. 2014. Behavioral and social structure effects on seed dispersal curves of a forest-interior *Bulbul* (Pycnonotidae) in a tropical evergreen forest. *Biotropica* 46 (3): 294-301. DOI: 10.1111/btp.12100.
- Khan MS. 2017. Effect of forest composition on bird species abundance in tropical dry deciduous forest: A case of Bhimbandh Wildlife Sanctuary, India. *Biodiversitas* 18 (1) 78-85. DOI: 10.13057/biodiv/d180112.
- Kiros S, Afework B, Legese K. 2018. A preliminary study on bird diversity and abundance from Wabe fragmented forests around Gubre Subcity and Wolkite Town, Southwestern Ethiopia. *Intl J Avian Wildlife Biol* 3 (5): 333-340. DOI: 10.15406/ijawb.2018.03.00116.
- Kurnia I, Arief H, Mardiatuti A, Hermawan R. 2021. The potential of bird diversity in the urban landscape for birdwatching in Java, Indonesia. *Biodiversitas* 22 (4): 1701-1711. DOI: 10.13057/biodiv/d220413.
- Kurnianto AS, Justinek Z, Purnomo, Batoro J, Kurniawan N. 2017. Bird assemblage and preference to Tengger sacred trees: Conservation insights from Tengger Tribe, Indonesia. *J Pembangunan dan Alam Lestari* 8 (2): 61-66. DOI: 10.21776/ub.jp.al.2017.008.02.01. [Indonesian]
- Lambert FR, Marshall AG. 1991. Keystone characteristics of bird-dispersed *Ficus* in a Malaysian lowland rain forest. *J Ecol* 79 (3): 793-809. DOI: 10.2307/2260668.
- Lavabre JE, Gilarranz LJ, Fortuna MA, Bascompte J. 2016. How does the functional diversity of frugivorous birds shape the spatial pattern of seed dispersal? A case study in a relict plant species. *Philos Trans R Soc B Biol Sci* 371 (1694): 20150280. DOI: 10.1098/rstb.2015.0280.
- Lekipiou P, Nanlohy LH. 2018. Kelimpahan dan keanekaragaman jenis burung di hutan mangrove Kampung Yenanas, Kabupaten Raja Ampat. *Mediaan* 10 (2): 12-19. DOI: 10.33506/md.v10i2.404. [Indonesian]
- Li N, Wang Z, Li XH, Yi XF, Yan C, Lu C, Chen SC. 2019. Effects of bird traits on seed dispersal of endangered *Taxus chinensis* (Pilger) Rehd. with ex-situ and in-situ conservation. *Forests* 10 (9): 790. DOI: 10.3390/f10090790.
- Li N, Zhang S, Ren YH, Wang Z. 2020. Importance of plant and bird traits on the seed removal pattern of endangered trees across different forest patches in Southeast China. *Ecol Process* 9 (1): 43. DOI: 10.1186/s13717-020-00253-6.

- Lomáscolo SB, Levey DJ, Kimball RT, Bolker BM, Alborn HT. 2010. Dispersers shape fruit diversity in *Ficus* (Moraceae). *Proc Natl Acad Sci USA* 107 (33): 14668-14672. DOI: 10.1073/pnas.1008773107.
- MacKinnon J, Phillips K, Van Balen B. 2010. Bird of Sumatera, Java, Bali and Kalimantan. RCB-LIPI & Birdlife Indonesia, Bogor.
- Magurran AE. 2004. *Measuring Biological Diversity*. Blackwell Publishing, Oxford.
- Marjakangas EL, Abrego N, Grøtan V, de Lima RAF, Bello C, Bovendorp RS, Culot L, Hasui É, Lima F, Muylaert RL, Niebuhr BB, Oliveira AA, Pereira LA, Prado PI, Stevens RD, Vancine MH, Ribeiro MC, Galetti M, Ovaskainen O. 2020. Fragmented tropical forests lose mutualistic plant-animal interactions. *Divers Distrib* 26 (2): 154-168. DOI: 10.1111/ddi.13010.
- Mifsud D, Falzon A, Malumphy C, De Lillo E, Vovlas N, Porcelli F. 2012. On some arthropods associated with *Ficus* species (Moraceae) in the Maltese Islands. *Bull Entomol Soc Malta* 5: 5-34.
- Mulyani YA, Kusri MD, Mardiatuti A. 2021. Diversity of fig trees in a tropical urban residential area of Sentul City, Bogor, West Java. *IOP Conf Ser Earth Environ Sci* 918: 012013. DOI: 10.1088/1755-1315/918/1/012013.
- Odum EP. 1993. *Dasar-Dasar Ekologi*. Terjemahan Tjahjono Samingan. Edisi. Ketiga. Universitas Gadjah Mada Press, Yogyakarta. [Indonesian]
- Pandey N, Khanal L, Chapagain N, Singh KD, Bhattarai BP, Chalise MK. 2021. Bird community structure as a function of habitat heterogeneity: A case of Mardi Himal, Central Nepal. *Biodiversitas* 22 (1): 262-271. DOI: 10.13057/biodiv/d220132.
- Partasasmita R, Atsaury ZIA, Husodo T. 2017. The use of forest canopy by various bird species in tropical forest montana zone, the Nature Reserve of Mount Tilu, West Java, Indonesia. *Biodiversitas* 18 (2): 453-457. DOI: 10.13057/biodiv/d180202.
- Partasasmita R, Mardiatuti A, Solihin DD, Widjajakusuma R, Prijono SR, Ueda K. 2009. Komunitas burung pemakan buah di habitat suksesi. *Biosfera* 26 (2): 90-99. [Indonesian]
- Pradana DH, Mardiatuti A, Yasman. 2018. Utilization of *Ficus benjamina* by birds at urban habitat in Depok. *Bioma* 20 (1): 75-78. DOI: 10.14710/bioma.20.1.75-78.
- Praptiwi RA, Saab R, Setia TM, Wicaksono G, Wulandari P, Sugardjito J. 2019. Bird diversity in transition zone of Taka Bonerate, Kepulauan Selayar biosphere reserve, Indonesia. *Biodiversitas* 20 (3): 820-824. DOI: 10.13057/biodiv/d200327.
- Priyono B, Abdullah M, Febriyanto MN, Bodijantoro FPMH, Purwantoyo E. 2021. Fig visitor's behaviour in Ungaran Mountain, Indonesia. *J Phys Conf Ser* 1918: 052044. DOI: 10.1088/1742-6596/1918/5/052044.
- Quitán M, Santillán V, Espinosa CI, Homeier J, Böhning-Gaese K, Schleuning M, Neuschulz EL. 2019. Direct and indirect effects of plant and frugivore diversity on structural and functional components of fruit removal by birds. *Oecologia* 189 (2): 435-445. DOI: 10.1007/s00442-018-4324-y.
- Rahayuningsih M, Kurniawan FH, Kartijono NE. 2020. The potential of *Ficus* species as frugivorous feed on Gentong Hill, Mount Ungaran, Indonesia. *For Ideas* 2 (60): 540-548.
- Rajpar MN, Zakaria M. 2011. Bird species abundance and their correlation with microclimate and habitat variables at Natural Wetland Reserve, Peninsular Malaysia. *Intl J Zool* 2011: 758573. DOI: 10.1155/2011/758573.
- Rohan F, Diwanata B, Akhsani F, Priambodo B, Lestari SR. 2020. Exploring biodiversity of Indonesian birds with their plant preferences. *AIP Conf Proc* 2231: 040086. DOI: 10.1063/5.0002506.
- Ruranga ML, Gutiérrez AJ, Matthews TJ, Niyigaba P, Wayman JP, Tobias JA, Whittaker RJ. 2021. Effects of land-use change on avian assemblage and network phylogenetic diversity in a tropical montane rainforest. *Divers Distrib* 27 (9): 1732-1746. DOI: 10.1111/ddi.13364.
- Sanitjan S, Chen J. 2009. Habitat and fig characteristics influence the bird assemblage and network properties of fig trees from Xishuangbanna, South-west China. *J Trop Ecol* 25: 161-170. DOI: 10.1017/S0266467409005847.
- Schupp EW, Jordano P, Gómez JM. 2017. A general framework for effectiveness concepts in mutualisms. *Ecol Lett* 20 (5): 577-590. DOI: 10.1111/ele.12764.
- Shah SB, Sharma HP. 2022. Bird diversity and factors affecting bird abundance at Dullu Municipality, Dailekh, Nepal. *Biodiversitas* 23 (3): 1535-1545. DOI: 10.13057/biodiv/d230343.
- Shakya SB, Sheldon FH. 2017. The phylogeny of the world's bulbuls (Pycnonotidae) inferred using a supermatrix approach. *Ibis* 159: 498-509. DOI: 10.1111/ibi.12464.
- Siri S, Ponpituk Y, Safoowong M, Marod D, Duengkae P. 2019. The natural forest gaps maintenance diversity of understory birds in Mae Sa-Kog Ma Biosphere Reserve, Northern Thailand. *Biodiversitas* 20 (1): 181-189. DOI: 10.13057/biodiv/d200121.
- Sreekar R, Thi Phuong LN, Harrison RD. 2010. Vertebrate assemblage at a fruiting fig (*Ficus caulocarpa*) in Maliau Basin, Malaysia. *Trop Conserv Sci* 3 (2): 218-227. DOI: 10.1177/194008291000300208.
- Tobias JA, Ottenburghs J, Pigot AL. 2020. Avian diversity: Speciation, macroevolution, and ecological function. *Ann Rev Ecol Evol Syst* 51: 533-560. DOI: 10.1146/annurev-ecolsys-110218-025023.
- Trounov VL, Vasilieva AB. 2014. First record of the nesting biology of the red-vented barbet, *Megalaima lagrandieri* (Aves: Piciformes: Megalaimidae), an Indochinese endemic. *Raffles Bull Zool* 62: 671-678.
- Vidal MM, Hasui E, Pizo MA, Tamashiro JY, Silva WR, Guimarães PR, Guimarães G. 2014. Frugivores at higher risk of extinction are the key elements of a mutualistic network. *Ecology* 95 (12): 3440-3447. DOI: 10.1890/13-1584.1.
- Vollstädt MGR, Albrecht J, Böhning-Gaese K, Hemp A, Howell KM, Kettering L, Neu A, Neuschulz EL, Quitán M, Santillán VE, Töpfer T, Schleuning M, Fritz SA. 2020. Direct and plant-mediated effects of climate on bird diversity in tropical mountains. *Ecol Evol* 10 (4): 14196-14208. DOI: 10.1002/ece3.7014.
- Wolfe JD, Ralph CJ, Wiegardt A. 2017. Bottom-up processes influence the demography and life-cycle phenology of Hawaiian bird communities. *Ecology* 98 (11): 2885-2894. DOI: 10.1002/ecy.1981.
- Yang DR, Peng YQ, Yang P, Guan JM. 2008. The community structure of insects associated with figs at Xishuangbanna, China. *Symbiosis* 45: 153-157.
- Zietsman MY, Montaldo NH, Devoto M. 2019. Plant-frugivore interactions in an urban nature reserve and its nearby gardens. *J Urban Ecol* 6 (1): 1-9. DOI: 10.1093/jue/juz021.