

VOL 36, NO 1 (2019)

DAFTAR ISI

ARTIKEL

Jenis, Frekuensi Kemunculan, dan Persentase Penyakit Cendawan pada Tanaman Sayuran

Eddy Tri Suganto, Muchlisin Abbas
10.20884/1.mib.2019.36.1.719 | Abstrak views: 719 | PDF views: 6099 | PDF 1-7

Distribution of *Salacca zalacca* 'Kelapa'

Pulis Widodo, Wihni Herawati, Sukarna Setiawan
10.20884/1.mib.2019.36.1.634 | Abstrak views: 271 | PDF views: 299 | PDF 10-14

Hubungan Jenis Kelamin dengan Kejadian Infeksi HBV dan HCV pada Orang dengan HIV/AIDS (ODHA)

Formalia Novikho Sidiyasa, Durrish Hamidun, MM RYANUR ERIH
10.20884/1.mib.2019.36.1.706 | Abstrak views: 809 | PDF views: 1531 | PDF 15-18

Kepadatan dan Penyebaran serta Status Resistensi Nyamuk (Diptera: Culicidae) dari Daerah Endemis dan Non Endemis DBD di Wilayah DIY

Dika Hanny Widayanti, Gusman Gusman, Ican Shella Masduki, Tim Mardiana
10.20884/1.mib.2019.36.1.756 | Abstrak views: 600 | PDF views: 422 | PDF 19-25

Isolasi Cendawan yang Berperan dalam Proses Pembuatan Plek U (Makanan Fermentasi Khas Aceh)

Mohammad Asbi, Anasaidi Tura Perdana, Mahrojudin Mahrojudin, Anis Asyrafah, Qunedy A'qun
10.20884/1.mib.2019.36.1.807 | Abstrak views: 1401 | PDF views: 953 | PDF 26-34

Identifikasi Bakteri Asam Laktat dari Limbah Cair Sagu dengan Gen 16S rRNA

Poelina Dendurukani Kari, Ariandi Anandi, Els Pratiwi Tanuwidura
10.20884/1.mib.2019.36.1.924 | Abstrak views: 785 | PDF views: 1409 | PDF 35-40

Keanekaragaman Jenis Ikan di Perairan Lebak Jungkal Kecamatan Pampangan Kabupaten Ogan Komering Ilir pada Musim Hujan dan Kemarau

Mohammad Bayu Rihgo, Ezzan Patrisio, Rio Haryadi
10.20884/1.mib.2019.36.1.958 | Abstrak views: 815 | PDF views: 2012 | PDF 41-50

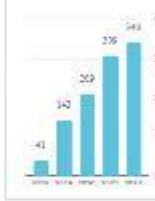


BAHASA

EN



Cited by: 101 Since 2014
Citations: 1172
h-index: 15



- Fokus dan Ruang Lingkup
- Cewan Editor
- Mitra Sertifikasi
- Indeks Jurnal
- Statistik Jurnal
- Etika Publikasi
- Untuk Pembaca
- Untuk Pustaka
- Untuk Penulis
- Panduan Penulis
- Pengiriman Naskah Online
- Kontak



SUBMIT YOUR
PAPER

E-ISSN-BARCODE
ISSN 2528-2050



9 772528 205007

P-ISSN-BARCODE
ISSN 0853-1629



LISENSI



Except where otherwise noted, content on this site is licensed under a [Creative Commons Attribution-ShareAlike 4.0 International License](#).

- [BERANDA](#)
- [TENTANG KAMI](#)
- [LOGIN](#)
- [DAFTAR](#)
- [CARI](#)
- [TERKINI](#)
- [ARSIP](#)
- [INFORMASI](#)

[Beranda](#) > [Arsip](#) > [Vol 36, No 1 \(2019\)](#)

VOL 36, NO 1 (2019)

DAFTAR ISI

ARTIKEL

[Jenis, Frekuensi Kemunculan, dan Persentase Penyakit Cendawan pada Tanaman Sayuran](#)

EDDY TRI SUCANTO, MUACHIROH ABBAS

[10.20884/1.mib.2019.36.1.719](#)

[| Abstrak views: 719 | PDF views: 6099 |](#)

[Distribution of *Salacca zalacca* 'Kelapa'](#)

PUDJI WIDODO, WIWIK HERAWATI, SUKARSA SUKARSA

[10.20884/1.mib.2019.36.1.634](#)

[| Abstrak views: 271 | PDF views: 299 |](#)

[Hubungan Jenis Kelamin dengan Kejadian Infeksi HBV dan HCV pada Orang dengan HIV/ AIDS \(ODHA\)](#)

FORMAN NOVRINDO SIDJABAT, DURROH HUMAIROH, MM RIYANIARTI ESTRI

[10.20884/1.mib.2019.36.1.706](#)

[| Abstrak views: 809 | PDF views: 1531 |](#)

[Kepadatan dan Penyebaran serta Status Resistensi Nyamuk \(Diptera: Culicidae\) dari Daerah Endemis dan Non Endemis DBD di Wilayah DIY](#)

DILA HENING WINDYARAINI, GIYANTOLIN GIYANTOLIN, ILZAM SHADIK MAULIDI, TITI MARSIFAH

[10.20884/1.mib.2019.36.1.756](#)

[| Abstrak views: 600 | PDF views: 422 |](#)

[Isolasi Cendawan yang Berperan dalam Proses Pembuatan Pliek U \(Makanan Fermentasi Khas Aceh\)](#)

MUHAMMAD ASRIL, ANALEKTA TIARA PERDANA, MAHYARUDIN MAHYARUDIN, ANJA ASMARANY, QURROTA A'YUN

[10.20884/1.mib.2019.36.1.807](#)

[| Abstrak views: 1401 | PDF views: 953 |](#)

[Identifikasi Bakteri Asam Laktat dari Limbah Cair Sagu dengan Gen 16S rRNA](#)

PAULINE DESTINUGRAINY KASI, ARIANDI ARIANDI, EKA PRATIWI TENRIAWARU

[10.20884/1.mib.2019.36.1.924](#)

[| Abstrak views: 785 | PDF views: 1409 |](#)

[Keanekaragaman Jenis Ikan di Perairan Lebak Jungkal Kecamatan Pampangan Kabupaten Ogan Komering Ilir pada Musim Hujan dan Kemarau](#)

MOHAMMAD RASYID RIDHO, ENGGAR PATRIONO, RITA HARYANI

[10.20884/1.mib.2019.36.1.958](#)

[| Abstrak views: 815 | PDF views: 2012 |](#)

BIOSFERA: Distribution of Salacca zalacca



Pudji Widodo <pudjiunsoed@gmail.com>

Tue, Feb 27,
2018, 9:05 PM

to Romanus, Erwin

Yth Mas Romy & Mas Erwin,

Berikut ini file paper kami yang sudah saya perbaiki. Berhubung kesulitan mengunggah ke Biosfera. Daripada terlalu lama mengunggah maka saya kirim dulu via email. Terima kasih.

Pudji Widodo

Fakultas Biologi Universitas Jenderal Soedirman

PURWOKERTO 53122 INDONESIA

Attachments area



ReplyReply allForward

See discussions, stats, and author profiles for this publication at: <https://www.researchgate.net/publication/335229646>

Diversity and distribution of figs (Ficus spp.)

Article · August 2019

CITATIONS

0

READS

346

7 authors, including:



Yayan Hendrayana
Universitas Kuningan

8 PUBLICATIONS 2 CITATIONS

[SEE PROFILE](#)



Pudji Widodo
Universitas Jenderal Soedirman

38 PUBLICATIONS 28 CITATIONS

[SEE PROFILE](#)



Imam Widhiono
Universitas Jenderal Soedirman

26 PUBLICATIONS 50 CITATIONS

[SEE PROFILE](#)

Some of the authors of this publication are also working on these related projects:



Penelitian Produk Terapan [View project](#)



agroecosystem engineering for supporting application of local honey on pollination success [View project](#)

Short Communication: Diversity and distribution of figs (*Ficus* spp.) across altitudes in Gunung Tilu, Kuningan, West Java, Indonesia

YAYAN HENDRAYANA^{1,*}, PUDJI WIDODO², CECEP KUSMANA^{3,}, IMAM WIDHIONO²**

¹Faculty of Forestry, Universitas Kuningan. Jl. Tjut Nyak Dhien, Cijoho, Kuningan 45513, West Java, Indonesia. Tel.: +62-874824, Fax.: +62-232-873696, *email: yayan.hendrayana@uniku.ac.id

²Faculty of Biology, Universitas Jenderal Soedirman. Jl. Dr. Soeparno 63, Purwokerto, Banyumas 53122, Central Java, Indonesia

³Department of Silviculture, Faculty of Forestry, Institut Pertanian Bogor. Jl. Raya Dramaga, IPB Dramaga Campus, Bogor 16680, West Java, Indonesia. Tel.: +62-251-8626806, Fax.: +62-251-8626886, **email: ck_mangrove@gmail.com

Manuscript received: 1 February 2019. Revision accepted: 10 May 2019.

Abstract. Hendrayana Y, Widodo P, Kusmana C, Widhiono I. 2019. Short Communication: Diversity and distribution of figs (*Ficus* spp.) across altitudes in Gunung Tilu, Kuningan, West Java, Indonesia. *Biodiversitas* 20: 1568-1574. The genus of *Ficus* is significant component in tropical rainforest ecosystem, consisting of large number of species and spreading across altitudes. This research was aimed to examine the diversity and distribution of species belong to *Ficus* genus in Gunung Tilu, Kuningan District, West Java as a basis for building conservation strategies. There were 12 species of *Ficus* found from the altitudes of 600 to 1000 m asl. The highest number of species was found at the altitudes of 600 - 700 m above sea level with 10 species, while the lowest number of species were found at the altitudes above 1000 m asl with only two species. The highest individual density was found at an altitude of 600 m asl, while the lowest density was at the altitude of 1000 m asl. The distribution pattern of *Ficus* spreads throughout the region of Gunung Tilu, Kuningan.

Keywords: Distribution, diversity, *Ficus* spp., Gunung Tilu, lowland forests

INTRODUCTION

Figs, plant species from the genus of *Ficus*, is one of the major flora diversities in Southeast Asian tropical rainforests because of its ability to bear fruit throughout the year (Sreekar et al. 2010; Nason et al. 1998). This plant is wide-spread from tropical to subtropical zones of this region (Berg and Corner 2005). There are about 735 - 755 species from the genus of *Ficus* that have been identified by researchers (Berg and Corner 2005; van Noort and Rasplus 2004-2012). In Indonesia, the genus of *Ficus* can be found in large islands such as Sumatra 102 with species, Kalimantan with 106 species, Papua with 99 species, Sulawesi with 83 species, Java with 75 species, Maluku with 71 species and Nusa Tenggara with 36 species (Yusuf 2011). Figs can survive in various types of habitat ranging from rainforests, under canopies, and along rivers and cliffs (Burrows and Burrows 2003). In Malaysia region, they can be found in almost all types of terrestrial vegetation such as wet or dry land, rocky areas, primary and secondary forests, and in areas with altitude of less than 1,500 m asl (Berg and Corner 2005; Yusuf 2011). They have various forms of growth including hemiepiphytes (strangulation), large woody plants, climber, trees, and bushes (Pothasin et al. 2014).

Ficus are very important for pollinating and seed disperser animals (Mills et al. 1993), beetles (Harrison 2003) and fruit-eating birds (Lambert and Marshall 1991). They serve as source of food for mammals such as

squirrels, civets (Lok et al. 2013), and primates (Gautier-Hion 1980) including surili (Ruhayat 1983), Javan langurs (Ihsanu et al. 2013), long-tailed monkeys (Chivers and Langer 1994), and Javan gibbons (Farida and Harun 2000). It can also function as tree for resting for fauna such as *Tarsius* sp. (Sinaga et al. 2012) and *Macaca nigra* (Lengkong 2011).

In addition to the benefits for animals, *Ficus* trees play important roles in ecological restoration, because the density and diversity of saplings of *Ficus* are two times higher than those from other genera, showing that it is more effective to use *Ficus* to restore degraded ecosystems compared to others. With regard to the composition of vegetation communities, the diversity index and dominance values of *Ficus* are also higher compared to others. These suggest that species from *Ficus* genus can support regeneration of plant communities in a landscape which does not only support the spread of fruiting plants, but can also develop new composition structures (Corbin and Holl 2012).

Gunung Tilu (Tilu Mountain) is one of lowland mountains located in the eastern part of Kuningan District. Until recently, information about the diversity of flora and fauna, especially *Ficus* spp., has not been deeply explored. Preliminary information gathered from community interviews revealed that these plants have no special importance. Nevertheless, understanding the diversity and distribution of species is important for environmental assessment of a landscape. It is generally known that trees

with important values on the composition and structure of a vegetation community may have key functionalities of tropical forest ecosystems and can also serve as strong indicator of change in land cover. Based on these explanations, there is a need for research on the diversity, density and distribution of *Ficus* on the basis of spectrum of altitude for forest conservation in Gunung Tilu, Kuningan District and this is going to be the objective of this research. The results of this study can be used as reference to develop conservation strategies of Gunung Tilu forest area in Kuningan District.

MATERIALS AND METHODS

Study area

This research was carried out for three months in Gunung Tilu forest area in Kuningan District, which is located at 07°06'12,2"- 07°07'48,1" North Latitude and 108°41'47,7"-108°41'39,0" East Longitude. The forest is categorized as lowland forest and a part of Bukit Pembarisan in the eastern part of Kuningan.

Administratively, Gunung Tilu is located in Jabranti Village, Karang Kancana Sub-district and Cimara Village, Cibingbin Sub-district, Kuningan District (Figure 1).

Procedures

Purposive sampling method was employed during data collection in the field (Notoadmodja 2010). Gunung Tilu forest area has an extent of 962 ha. Using Sampling Intensity (IS) of 1%, resulting in sample plots of 9.62 ha which consists of 12 transects. Each transect was assigned to different altitude ranging from 500 to 1,000 m asl with each transect had a length of 100 m and a width of 20 m. Variables observed included species richness and number of individuals, diameter (dbh), height of branch and total height for poles and trees. The distribution of *Ficus* was mapped by taking the coordinates of any point where they were found. Data were recorded simultaneously using Global Positioning System (GPS), field observation and vegetation analysis in order to analyze spatial distribution of the plants in Gunung Tilu, Kuningan District.

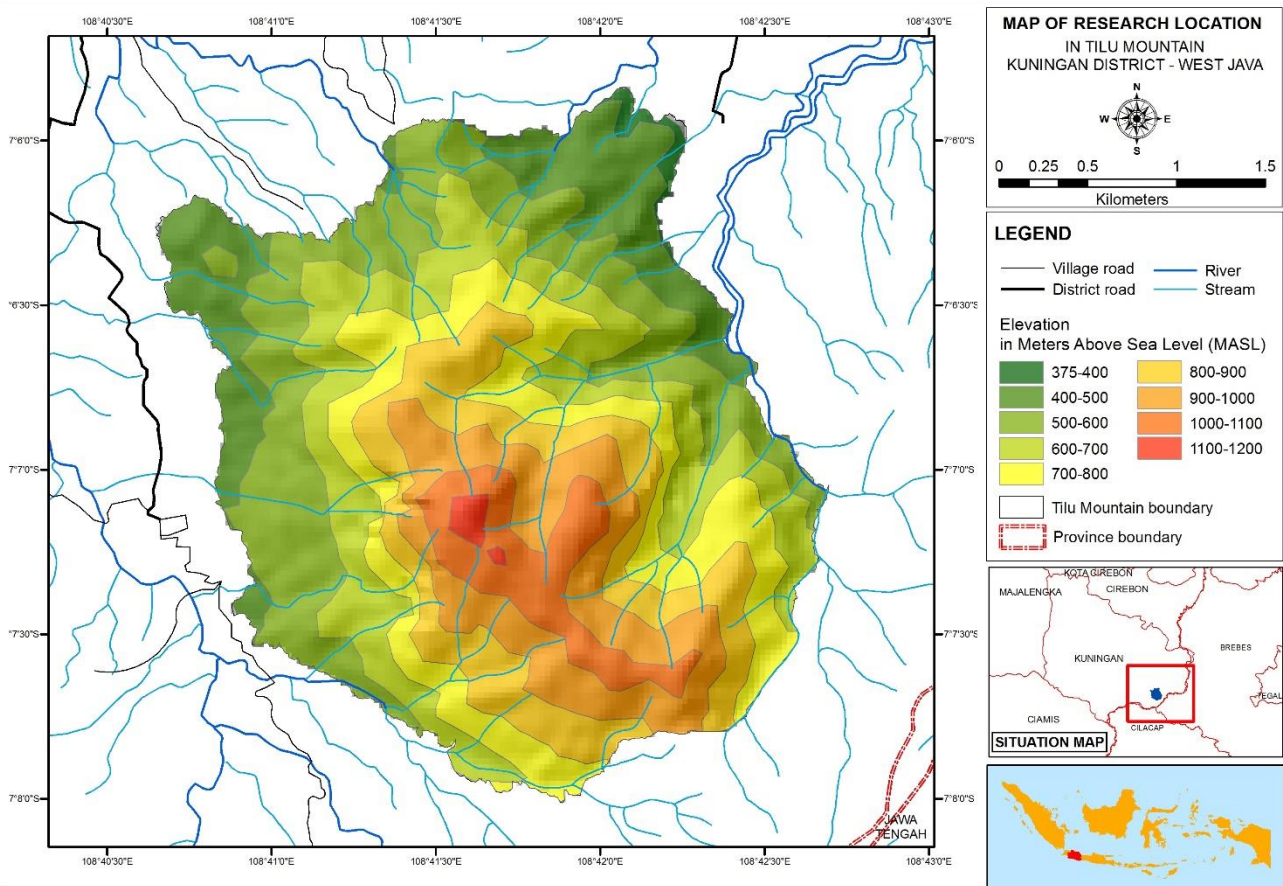


Figure 1. Location of Gunung Tilu, Kuningan District, West Java Province, Indonesia

Table 1. The dominant species for each level of growth stage at various altitudes in Gunung Tilu, Kuningan District, West Java, Indonesia

Altitude (m asl)	Dominant species							
	Seedlings	IVI (%)	Saplings	IVI (%)	Poles	IVI (%)	Trees	IVI (%)
600	<i>Harpullia cupanioides</i>	12.01	<i>Harpullia cupanioides</i>	8.85	<i>Baccaurea javanica</i>	8.85	<i>Celtis tetrandra</i>	16.20
	<i>Mitrephora obtusa</i>	10.08	<i>Mitrephora obtusa</i>	6.38	<i>Horsfieldia glabra</i>	6.38	<i>Bischofia javanica</i>	15.81
	<i>Diospyros truncata</i>	8.98	<i>Mischocarpus fuscescens</i>	4.97	<i>Polyalthia lateriflora</i>	4.97	<i>Ficus sundaica</i>	15.24
700	<i>Cinnamomum sintoc</i>	9.63	<i>Antidesma montanum</i>	9.63	<i>Diospyros truncata</i>	9.63	<i>Ficus sundaica</i>	19.10
	<i>Tarenna polycarpa</i>	8.43	<i>Grewia laevigata</i>	8.43	<i>Polyalthia lateriflora</i>	8.43	<i>Sterculia campanulata</i>	17.34
	<i>Aglaia odorata</i>	8.42	<i>Pterocymbium javanicum</i>	8.42	<i>Antidesma</i> sp.	8.42	<i>Neonauclea calycina</i>	14.62
800	<i>Polyalthia lateriflora</i>	6.77	<i>Harpullia cupanioides</i>	11.69	<i>Garcinia dioica</i>	15.49	<i>Celtis tetrandra</i>	22.85
	<i>Antidesma</i> sp.	6.48	<i>Mallotus rufidulus</i>	10.22	<i>Mischocarpus fuscescens</i>	10.28	<i>Ficus drupacea</i>	13.78
	<i>Mitrephora obtusa</i>	4.35	<i>Garcinia balica</i>	8.82	<i>Harpullia cupanioides</i>	7.42	<i>Ficus virens</i>	12.91
900	<i>Mallotus rufidulus</i>	17.31	<i>Harpullia cupanioides</i>	12.56	<i>Litsea glutinosa</i>	11.63	<i>Celtis tetrandra</i>	21.80
	<i>Polyalthia subcordata</i>	16.98	<i>Baccaurea javanica</i>	11.79	<i>Harpullia cupanioides</i>	11.33	<i>Radermachera gigantea</i>	17.34
	<i>Mischocarpus fuscescens</i>	15.41	<i>Sterculia oblongata</i>	11.15	<i>Sterculia oblongata</i>	8.21	<i>Neonauclea calycina</i>	15.46
1.000	<i>Bischofia javanica</i>	15.33	<i>Pittosporum ferrugineum</i>	4.93	<i>Pittosporum ferrugineum</i>	6.01	<i>Sterculia campanulata</i>	29.37
	<i>Sterculia oblongata</i>	12.97	<i>Harpullia cupanioides</i>	4.93	<i>Dysoxylum parasiticum</i>	5.44	<i>Lithocarpus indutus</i>	23.30
	<i>Lithocarpus indutus</i>	12.53	<i>Vitex quinata</i>	3.83	<i>Horsfieldia glabra</i>	4.12	<i>Bischofia javanica</i>	22.13

Data analysis

Data analyzed included tree species density, species dominance, and species diversity. Tree species density was obtained by dividing total individuals of a species by total extent of sample plots. Important Value Index as presented by Kusmana (2017) was used to analyze species dominance while Shannon Index (Ludwig and Reynolds 1988) was used to measure species diversity. The greater is Shannon Index value (H'), the higher is species diversity. The level of Shannon diversity index can be classified into three categories: $H' > 3$ indicates high diversity; $1 \leq H' \leq 3$ indicates moderate diversity; and $H' < 1$ indicates low diversity. The difference in tree density among altitudes was tested using SPSS 21. The statistical test used in this research is t-student.

The analysis of *Ficus* spp. distribution maps were conducted by obtaining and processing the Google Earth images through Arc Gis 10.2 computer software. Processing was carried out to get land cover maps, altitude maps, slope maps, and distance maps. Altitude and slope maps were produced by overlaying land cover maps with Landsat DEM image, while the distance map was obtained by applying spatial analysis tools using Euclidian distance.

RESULTS AND DISCUSSION

Gunung Tilu vegetation

Gunung Tilu area is classified as a lowland forest because of its vegetation species resemble this type of ecoregion with one of its peaks reaching an altitude of 1.200 m asl. From the observations of 48 sample plots, there were 145 species at tree stage, 159 species at pole stage, 140 species at sapling stage, and 141 species at seedling or ground cover stage. Plant species that dominates at tree level is kijungil (*Celtis tetrandra*) with Important Value Index (IVI) of 18,13% while the lowest IVI was cauliflower (*Xanthophyllum vitellinum*) with IVI of 0,26%. The relatively small of IVI value of *C. tetrandra* shows that tree vegetation in Gunung Tilu area tends to be heterogeneous.

The dominant species at the level of seedlings, saplings, poles, and trees at the altitude of 600 m asl were *Harpullia cupanioides* for seedlings and saplings, *Baccaurea javanica* for poles, and *Celtis tetrandra* for trees. At the altitude of 700 m asl, it was dominated by *Cinnamomum sintoc* for seedlings, *Antidesma montanum* for saplings, *Diospyros truncata* for poles, and *Ficus sundaica* for trees. Then, at an altitude of 800 m asl, it was dominated by *Polyalthia lateriflora* for seedlings, *Harpullia cupanioides* for saplings, *Garcinia dioica* for poles, and *Celtis tetrandra* for trees. Furthermore, at the altitude of 900 m asl, it was dominated by *Mallotus rufidulus* for seedlings, *Harpullia cupanioides* for saplings, *Litsea glutinosa* for poles, and *Celtis tetrandra* for trees. While, at the altitude of 1000 m asl, the dominating plants were *Bischofia javanica* (seedlings), *Pittosporum ferrugineum* (saplings and poles), and *Sterculia campanulata* (trees) (Table. 1).

In average, there was large number of species at each level of growth stage. Therefore, in general, the vegetation in Gunung Tilu can be classified as high diversity. Soerianegara and Indrawan (1988) emphasized that there is correlation between plants and habitat in terms of distribution of species, density, and dominance. A plant species is said to be dominant in a community if it is successful in utilizing most of the resources available for its growth compared to others.

The diversity of *Ficus* spp.

There were 12 species of *Ficus* spp. found in Gunung Tilu forest from the altitudes of 600 to 1.000 m asl. These included kiara beas (*Ficus sundaica*), kiara bunut (*Ficus virens*), kiara calodas (*Ficus drupacea*), karasak kara (*Ficus kurzii*), banyan tree (*Ficus benjamina*), kiara bonteng (*Ficus globosa*), kiara darangdang (*Ficus sinuata*), kondang (*Ficus variegata*), leles (*Ficus glandulifera*), kiara gembrong (*Ficus copiosa*), kiara karet (*Ficus elastica*) and hampelas (*Ficus ampelas*). At the altitude of 500 m asl, were found 6 species of *Ficus*. Then, at the altitude of 600 m asl, the majority of the area is directly adjacent to agricultural cultivation area and 10 species were found which is the highest number of species found among the observed altitudes. At the altitudes of 700 and 800 m asl, 8 species were found at each of these altitudes, while there were 5 species found at the altitude of 900 m asl. At the altitude above 1.000 m asl, only 2 species were found because of the closeness of this altitude to the peak of the mountain. Mulyasana (2008), said that the number of species generally decreases with increasing altitudes.

The total number of *Ficus* species found in this area is smaller than at Prof. Soemitro Djojohadikusumo conservation forest in PT. Tidar Kerinci Agung (TKA), Sumatera Barat with 20 species (Nur'aini et al. 2013), 27 species found at a lowland rainforest in Kalimantan (Harrison et al. 2003) and 32 species found at agricultural land in the Buganda region of Central Uganda (Ipulet 2008).

Density of *Ficus* spp.

There is great variation in the density of *Ficus* spp. based on altitude, from the lowest density of 0,42 ind/ha to the highest of 10 ind/ha. At the altitude of 600 m asl, 10 species were found with the highest density including *F. sundaica* (3,18 ind/ha) while the lowest was *F. calophylla*, *F. variegata*, *F. copiosa*, and *F. ampelas* (0,45 ind/ha). At the altitude of 700 m asl, species with the highest density was *F. sundaica* (3,33 ind/ha) and while the lowest density were *F. kurzii*, *F. variegata*, and *F. glandulifera* with 0,42 ind/ha. At the altitude of 800 m asl, species with the highest density was *F. calophylla* (3,18 ind/ha) and the lowest density was *F. globosa*, *F. sinuata*, and *F. Elastica* (0,45 ind/ha). At the altitude of 900 m asl, *F. virens* was species with the highest density (2,78 ind/ha) while those of the lowest density were *F. Kurzii*, *F. benjamina*, and *F. glandulifera* (0,56 ind/ha). From these results, it could be seen that the density of *Ficus* spp. is decreasing along with increasing altitudes and this is in accordance with the

results of research of Shanee and Peck (2008) in Northwest Equator.

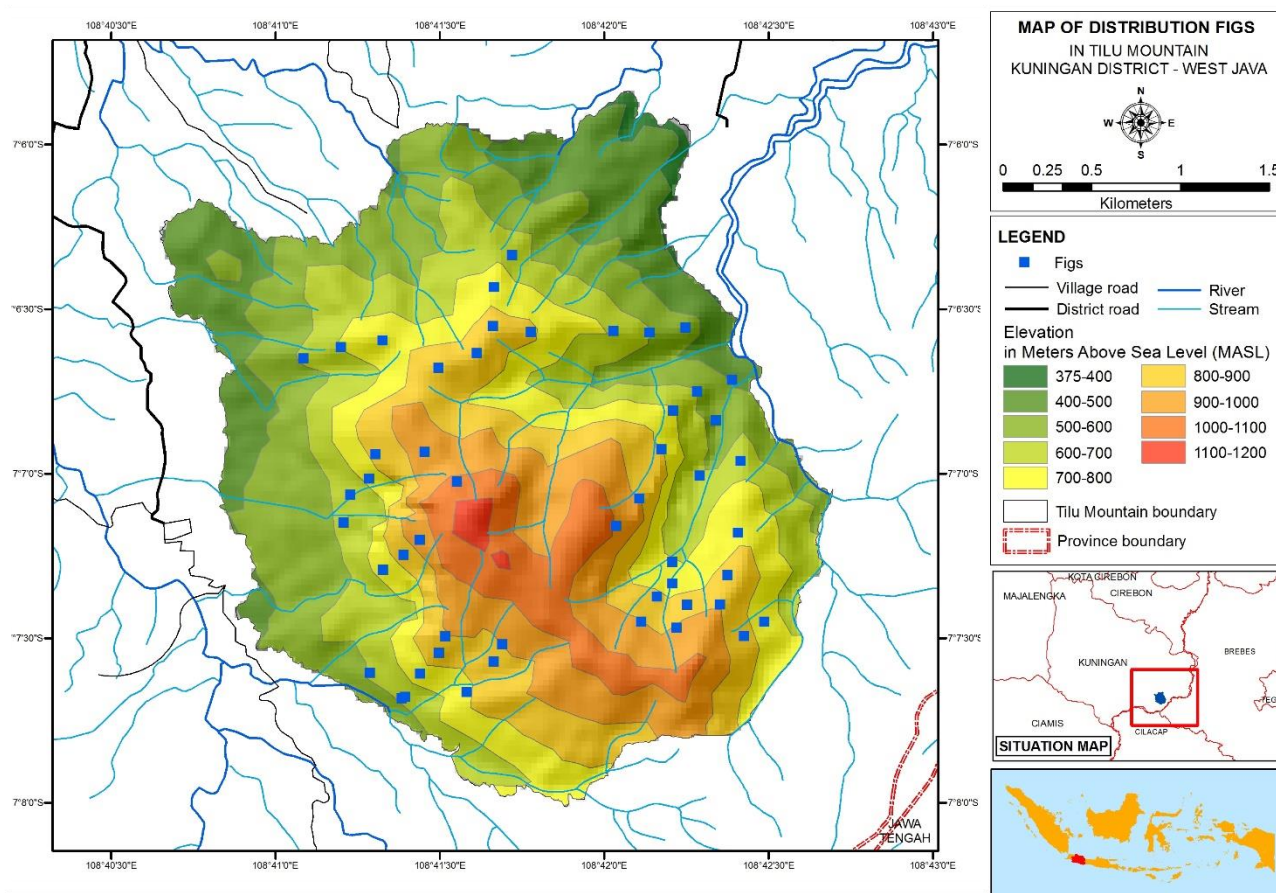


Figure 2. The distribution map of *Ficus* spp. in Gunung Tilu, Kuningan District, West Java, Indonesia

However, based on t-student tests carried out, the value of $F = 4,934$ and $P = 0,001$ were obtained which means that there are differences in the number of species at each altitude but there is no correlation between the number of species with altitude since the value of $R = -0,196$ and $P = 0,098$. From this analysis, it suggests that altitude does not affect the number of species of *Ficus* in Gunung Tilu, Kuningan District. Furthermore, density difference test resulted in the value of $\lambda_2 = 27,782$ $P = 0,000$ $df = 5$ which means that there is significant difference in individual density at each altitude but there is no correlation between density and altitude as the result of the $R = -0,221$ with $P = 0,062$. As such, it can be concluded that altitude does not affect the density of *Ficus* in Gunung Tilu, Kuningan District. In addition, based on the results, the presence of this plant could be found starting from an altitude of 500 to 1.000 m asl. However, not all species were found at every altitude, except *F. sundaica*. These results show that *F. sundaica* can life at altitude of 500 m asl until 900 m asl in Gunung Tilu.

Distribution of *Ficus* spp.

The distribution of *Ficus* spp. in Gunung Tilu area was started to be found at the altitude of 500 m asl until 1000 m asl with the highest distribution was observed at the altitude of 600 m asl. This finding is in line with Yusuf

(2011) which states that *Ficus* species in the tropics are mostly found in lowlands and lower mountain forests with altitude of <1500 m asl while there is few number of species are found in mountainous areas with altitudes of 1500-2500. Furthermore, Harrison (2005) said that in lowland tropical rainforests, *Ficus* is one of the most important plant genera. Based on GIS analysis, distribution of *Ficus* spp. in this study can be seen in Figure 2.

Based on the results (Table 4), distribution pattern of *Ficus* spp. in Gunung Tilu is clustered. Most tropical rainforest plant species have clustered spatial distribution pattern (Condit et al. 2000). In general, this can be caused by complex relationships of a number of factors, such as seed dispersal patterns (Bell 2000), competition for pollinators (Svenning 1999; Armbruster 1995), influence of population density (Webb and Peart 2000), the effects of disturbances (Molino and Sabatier 2001), as well as topographic variation and groundwater availability (Svenning 2001). Dolezal and Srutek (2002) revealed that distribution of a plant species is indirectly affected by interaction between the plant with temperature, air humidity, and other topographic conditions such as altitude and soil depth. Parikesit (1994) reported that in certain environmental conditions, each plant species spreads with different levels of adaptation and this determines the

presence and absence of a particular plant species in an environment.

Table 3. Species of *Ficus* in Gunung Tilu, Kuningan District, West Java, Indonesia and its density based on altitude

Species	Altitude					
	500 ind/ha	600 ind/ha	700 ind/ha	800 ind/ha	900 ind/ha	1.000 ind/ha
<i>F. sundaica</i>	1.67	2.92	3.33	1.25	0.83	0
<i>F. virens</i>	0.42	1.67	0	2.50	2.08	0
<i>F. calophylla</i>	0	0.42	2.08	2.92	1.25	0
<i>F. kurzii</i>	0.83	0.83	0.42	1.25	0.42	0
<i>F. benjamina</i>	0	2.08	0.83	0	0.42	0.42
<i>F. globosa</i>	0	1.25	0.42	0.42	0	0.83
<i>F. sinuate</i>	0.42	0	1.25	0.42	0	0
<i>F. variegata</i>	0.42	0.42	0.42	0.83	0	0
<i>F. glandulifera</i>	0	0.83	0.42	0	0.42	0
<i>F. copiosa</i>	0.83	0.42	0	0	0	0
<i>F. elastica</i>	0	0	0	0.42	0	0
<i>F. ampelas</i>	0	0.42	0	0	0	0
	4.58	11.25	9.17	10.00	5.42	1.25

Table 2. Diversity Index of *Ficus* spp.

Altitude (m asl)	Total of species	Diversity Index (H')
500	6	1,64
600	10	2,06
700	8	1,75
800	8	1,83
900	6	1,58
1000	2	0,63

Table 4. Distribution pattern of *Ficus* spp. in Gunung Tilu, Kuningan District, West Java, Indonesia

Species	Distribution pattern
<i>Ficus sundaica</i>	Clustered
<i>Ficus virens</i>	Clustered
<i>Ficus drupacea</i>	Clustered
<i>Ficus kurzii</i>	Clustered
<i>Ficus benjamina</i>	Clustered
<i>Ficus globosa</i>	Clustered
<i>Ficus sinuata</i>	Clustered
<i>Ficus variegata</i>	Clustered
<i>Ficus glandulifera</i>	Clustered
<i>Ficus copiosa</i>	Clustered
<i>Ficus elastica</i>	Clustered
<i>Ficus ampelas</i>	Clustered

In conclusion, *Ficus* spp. were found in Gunung Tilu at the altitude of 500 m asl until 1000 m asl. There were 12 species of *Ficus* that found in research location. The highest of number of species and density was found at an altitude of 600 m asl. Based on the results, altitude does not affect the density of *Ficus* in Gunung Tilu, Kuningan District. Distribution pattern of *Ficus* spp. in Gunung Tilu is clustered.

ACKNOWLEDGEMENTS

Our appreciation goes to Ditjen Risbang of Ministry of Research, Technology and Higher Education, Republic of Indonesia for funding this research. We also appreciate Perum Perhutani Divre West Java and Banten Province, Indonesia for giving us access to research location. We also thank Abdul Hakim, Ahmad, Rohman and Romi for their assistance in collecting data for this research.

REFERENCES

- Armbruster WS. 1995. The origins and detection of plant community structure: reproductive versus vegetative processes. *Folia Geobot* 30 (4): 483-497.
- Bell G. 2000. The distribution of abundance in neutral communities. *Am Naturalist* 155 (5): 606-617.
- Berg CC, Corner EJJ. 2005. *Ficus*—Moraceae. *Flora Malesiana, Series I*, 17: 1-730.
- Burrows J, Burrows S. 2003. *Figs of southern & south-central Africa*. Umdaus Press, Hatfield.
- Chivers DJ, Langer P. 1994. *The Digestive System in Mammals: Food, Form and Function*. Cambridge Univ Press, Australia.
- Condit R, Ashton PS, Baker P, Bunyavejchewin S, Gunatilleke S, Gunatilleke N, Hubbell SP, Foster RB, Itoh A, LaFrankie JV, Lee HS, Losos E, Manokaran N, Sukumar R, Yamakura T. 2000. Spatial patterns in the distribution of tropical trees. *Science* 288: 1414-1418.
- Corbin JD, Holl KD. 2012. Applied nucleation as a forest restoration strategy. *For Ecol Manag* 265: 37-46. DOI: 10.1016/j.foreco.2011.10.013
- Dolezal J, Srutek M. 2002. Altitudinal Changes in Composition and Structure of Mountain-Temperate Vegetation: A Case Study from Western Carpathians. *J Plant Ecol* 158 (16): 201-221.
- Farida WR, Harun. 2000. The diversity of plants as food resources for the Javan gibbon (*Hylobates moloch*), grizzled langur (*Presbytis comata*) and silver langur (*Trachypithecus auratus*) in Gunung Halimun National Park. *J Primatol* 3 (2): 55-61.
- Gautier-Hion A. 1980. Seasonal variations of diet related to species and sex in a community of Cercopithecus monkeys. *J Anim Ecol* 49: 237-269.
- Harrison RD, Hamid AA, Kenta T, LaFrankie J, Lee HC, Nagamasu H, Nakazhiska T, Palmiotto P. 2003. The diversity of hemi-epiphytic figs (*Ficus*; Moraceae) in a Bornean lowland rain forest. *Biol J Linn Soc* 78: 439-455.

- Harrison RD. 2003. Fig wasp dispersal and the stability of a keystone plant resource in Borneo. *Proc Biol Sci* 270: S76-S79.
- Harrison RD. 2005. Figs and the Diversity of Tropical Rainforest. *BioScience* 55 (12): 1053-1064.
- Ihsanu IA, Setiawan A, Rustiati EL. 2013. Studi perilaku makan dan analisis vegetasi pakan Lutung Jawa (*Trachypithecus Auratus*) di Taman Nasional Gunung Ciremai. *J Silva Lestari* 1 (1): 17-22. [Indonesian]
- Ipulet P. 2008. Diversity of Genus *Ficus* L. (Moraceae) in farmlands and pastoral areas in Uganda Region, Central Uganda. *Afr J Ecol* 46: 52-58
- Kusmana C. 2017. Metode Survey dan Interpretasi data Vegetasi. PT Penerbit IPB Press, Bogor. [Indonesia]
- Lambert FR, Marshall AG. 1991. Keystone characteristics of bird-dispersed *Ficus* in a Malaysian lowland rain forest. *J Ecol* 79: 793-809.
- Lengkong HJ. 2011. Laju Degradasi Habitat Monyet Hitam Sulawesi (*Macaca Nigra*) di Cagar Alam Gunung Duasudara Sulawesi Utara. *J Ilmiah Sains* 11 (1): 31-35.
- Lok, A.F., W.F. Ang, B.Y.Q. Ng, T.M. Leong, C.K. Yeo, and H.T.W. Tan. 2013. Native fig species as a keystone resource for the Singapore urban environment. Raffles Museum of Biodiversity Research, National University of Singapore, Singapore.
- Ludwig JA, Reynold JF. 1988. Statistical Ecology. A. Primer on Method on Competing: John Willey and Sons, New York.
- Mills LS, Soule ME, Doak DF. 1993. The keystone species concept in ecology and conservation. *BioScience* 43: 219-287.
- Molino JF, Sabatier D. 2001. Tree diversity in tropical rain forests: a validation of the intermediate disturbance hypothesis. *Science* 294 (5547): 1702-1704.
- Mulyasana 2008. Kajian keanekaragaman jenis pohon pada berbagai ketinggian tempat di Taman Nasional Gunung Ciremai Propinsi Jawa Barat. [Hon. Thesis]. Institut Pertanian Bogor, Bogor. [Indonesian]
- Nason JD, Herre EA, Hamrick JL. 1998. The breeding structure of a tropical keystone plant resource. *Nature* 391: 685-687.
- Nur'aini, Syamsuardi, Arbain A. 2013. Tumbuhan *Ficus* L. (Moraceae) di hutan konservasi Prof. Soemitro Djojohadikusumo, PT. Tidar Kerinci Agung (TKA), Sumatera Barat. *J Biologi Universitas Andalas*. 2 (4): 235-241. [Indonesian]
- Parikesit P. 1994. Composition and Structure of Cliff-Edge Forest in Relation to Some Environmental Gradients and Human Trampling. [Thesis]. University of Guelph, Ontario.
- Pothasin P, Compton SG, Wangpakapattanawong P. 2014. Riparian *Ficus* tree communities: The distribution and abundance of riparian fig trees in Northern Thailand. *PLoS ONE* 9 (10): e108945. DOI: 10.1371/journal.pone.0108945..
- Ruhiyat Y. 1983. Socio-ecological study of *Presbytis aygula* in West Java. *Primates* 24: 344-359.
- Shanee S, Peck MR. 2008. Elevational changes in a neotropical Fig (*Ficus* spp.) community in North Western Ecuador. *iForest-Biogeosciences For* 1 (2): 104.
- Sinaga W, Wirdatei, Iskandar E, Pamungkas J. 2012. Pengamatan Habitat, Pakan dan Sarang Tarsius (*Tarsius* sp.) Wilayah Sebaran di Sulawesi Tengah dan Gorontalo. Institut Pertanian Bogor, Bogor. [Indonesia]
- Soerianegara, Indrawan A. 1988. Ekologi Hutan Indonesia. Fakultas Kehutanan, IPB, Bogor. [Indonesia]
- Sreekar R, Le NTP, Harrison RD. 2010. Vertebrate assemblage at a fruiting fig (*Ficus caulocarpa*) in Maliau basin, Malaysia. *Trop Conserv Sci* 3: 218-227.
- Svenning JC. 1999. Microhabitat specialization in a species-rich palm community in Amazonian Ecuador. *J Ecol* 87 (1): 55-65.
- Svenning JC. 2001. On the role of microenvironmental heterogeneity in the ecology and diversification of Neotropical rain forest palms (Arecaceae). *Bot Rev* 67: 1-53.
- Van Noort S, Rasplus JY. 2005. Revision of the Papua New Guinean fig wasp genus *Robertsia* Bouček (Hymenoptera, Chalcidoidea, Pteromalidae, Sycoecinae). *Zootaxa* 929: 1-35.
- Webb CO, Peart DR. 2000. Habitat associations of trees and seedlings in a Bornean rain forest. *J Ecol* 88 (3): 464-478.
- Yusuf R. 2011. Sebaran Ekologi dan Keanekaragaman *Ficus* spp. di Indonesia. *Berk Penel Hayati Edisi Khusus: 5A* (83-91). [Indonesian]