

PAPER • OPEN ACCESS

Preface

To cite this article: 2020 *IOP Conf. Ser.: Earth Environ. Sci.* **593** 011001

View the [article online](#) for updates and enhancements.

You may also like

- [Effectiveness of Roundtable on Sustainable Palm Oil \(RSPO\) for reducing fires on oil palm concessions in Indonesia from 2012 to 2015](#)
Megan E Cattau, Miriam E Marlier and Ruth DeFries
- [Mapping and understanding the vulnerability of northern peatlands to permafrost thaw at scales relevant to community adaptation planning](#)
C Gibson, K Cottenie, T Gingras-Hill et al.
- [Shallow peat is most vulnerable to high peat burn severity during wildfire](#)
S L Wilkinson, A M Tekatch, C E Markle et al.



The Electrochemical Society
Advancing solid state & electrochemical science & technology

242nd ECS Meeting

Oct 9 – 13, 2022 • Atlanta, GA, US

Extended abstract submission deadline: April 22, 2022

Connect. Engage. Champion. Empower. Accelerate.

MOVE SCIENCE FORWARD



Submit your abstract



Preface

The Southeast Asian region covering Sundaland, Wallacea, Philippines, and Indo-Burma is unusually high in biodiversity and endemism. Areas with pristine environments, as well as cities, hold an enormous potential of undiscovered species. Valuable resources that have yet to be explored from the area provide an ecosystem function and services to support human welfare. One such resource is the peatlands found in nearly all countries across Southeast Asia.

Global climate change that can cause the extinction of biological resources is accelerated by human impact, including excessive exploitation of biological resources, an introduction of foreign species, and habitat conversions. An ecosystem sensitive to conversion is peatlands. With their expertise, scientists can develop research projects to explore biological resources available through biotechnology in maintaining biodiversity while utilizing it for human welfare.

SEACoBB provides a forum for scientists interested in biodiversity and biotechnology to discuss their findings for maintaining sustainable environments. It is also a forum to create or strengthen the networks among scientists. We accommodate four symposia covering 1) Peatland: recent status and future management, 2) Biotechnology: the use of bioresources and securing biodiversity, 3) Ecosystem health in support of sustainable ecosystem services, and 4) Discovery of biodiversity and their evolution in a degraded ecosystem. Speakers and participants from several countries attended the SEACoBB. A total of 144 articles have been presented of both oral and poster presentations, and 37 of them are published in this conference proceedings.

We would like to thank all the parties that give great support to the conference organized by the Biology Faculty of Universitas Jenderal Soedirman and the Peatland Restoration Agency, Republic of Indonesia, all keynote speakers, invited speakers, participants, also steering and organizing committee.

The Editors:

Dr. Romanus Edy Prabowo

Dr. Jocelyn T Zarate

Prof. Dr. Mitsuru Osaki

Dr. Haris Gunawan

Prof. Dr. Imam Widhiono

Dr. Ardhini Rin Maharning

Dr. Erwin Riyanto Ardli

Dr. Agus Nuryanto



NOTICE: Ukraine: [Click here to read IOP Publishing's statement.](#)

Table of contents

Volume 593

2020

◀ Previous issue Next issue ▶

The South-East Asian+ Conference on Biodiversity and Biotechnology 2018 5-7 November 2018, Purwokerto, Indonesia

Accepted papers received: 19 October 2020

Published online: 19 November 2020

[Open all abstracts](#)

Preface

OPEN ACCESS 011001

Preface

[+ Open abstract](#) [View article](#) [PDF](#)

OPEN ACCESS 011002

Peer review declaration

[+ Open abstract](#) [View article](#) [PDF](#)

Papers

OPEN ACCESS 012001

Preservation Technique of Filamentous Fungi Based on Inactive Metabolism at Indonesian Culture Collection (InaCC)

Hasnadhiazahra Rohadi, Muhammad Ilyas and Nuraeni Ekowati

[+ Open abstract](#) [View article](#) [PDF](#)

OPEN ACCESS 012002

A Study on Fish Reproduction for The Prevention of Species Loss Due to Batik Waste Pollution

GE Wijayanti and W Lestari

[+ Open abstract](#)[View article](#)[PDF](#)**OPEN ACCESS**

012003

Diversity and Intensity of Protozoan Ectoparasites of Black Tiger Prawn (*Penaeus monodon* Fab.) from Segara Anakan, Cilacap, Central Java

Edy Riwidiharso, Slamet Santoso and Rokhmani

[+ Open abstract](#)[View article](#)[PDF](#)**OPEN ACCESS**

012004

The Daily Activity of Long Tailed Macaques (*Macaca fascicularis* Raffles) in Cikakak Tourist Resort Wangon Banyumas (a Conservation Effort)

Erie Kolya Nasution and Siti Rukayah

[+ Open abstract](#)[View article](#)[PDF](#)**OPEN ACCESS**

012005

Renoprotective Effects of Lycopene in Tomato Extracts on Rat Exposed to Cadmium

Hernayanti, S Santoso, S Lestari, L Prayogo, Kamsinah and Rochmatino

[+ Open abstract](#)[View article](#)[PDF](#)**OPEN ACCESS**

012006

Indole Acetic Acid (IAA) Producing Bacteria from Saline Paddy Soil in Kebumen

TA Manshur, IA Fauzan, E Junianti and Purwanto

[+ Open abstract](#)[View article](#)[PDF](#)**OPEN ACCESS**

012007

Daily Activity of Wild Bee Pollinators on Strawberry in Highland Agriculture, Eastern Slope of Mount Slamet, Central Java

Darsono and Imam Widhiono

[+ Open abstract](#)[View article](#)[PDF](#)**OPEN ACCESS**

012008

Characterization of Marker Compounds in *Curcuma zanthorrhiza* Using NMR

A Saputra, Y Rinanto, J Ariyanto, C D Sari and Q Binti

[+ Open abstract](#)[View article](#)[PDF](#)**OPEN ACCESS**

012009

Contribution of Community Forest of Banyumas Regency on CO₂ Absorption

Eming Sudiana, Edy Yani and Imam Widhiono

[+ Open abstract](#)[View article](#)[PDF](#)

OPEN ACCESS

012010

Predation Capacity of *Phytoseius crinitus* Swirski Et Schebter on Each Stage of *Tetranychus urticae* and Alternative Food for Laboratory Mass Rearing

BH Budianto and E Basuki

[+ Open abstract](#)

[View article](#)

[PDF](#)

OPEN ACCESS

012011

Effects of Ethyl Acetate Extract of Jew's Ear Mushrooms (*Auricularia auricula*) on Cytotoxic and Apoptosis of Cervical Cancer Cells (HeLa)

Nuraeni Ekowati, Ardhini R Maharning, Nuniek I Ratnaningtyas, Aris Mumpuni and Arif R Hikam

[+ Open abstract](#)

[View article](#)

[PDF](#)

OPEN ACCESS

012012

Fish Diversity in River Sapuregel of Segara Anakan Eastern Area Cilacap

Nuning Setyaningrum, Agatha Sih Piranti, Carmudi, Dwi Sunu, M Ilal Qisni Insan, USR Diana Retna and Erwin R Adli

[+ Open abstract](#)

[View article](#)

[PDF](#)

OPEN ACCESS

012013

Growth and Anatomical Responses of Gogo Rice Plant (*Oryza sativa* L.) Var. Inpago Unsoed 1 to Paclobutrazol Application

Triani Hardiyati, Iman Budisantoso and Siti Samiyarsih

[+ Open abstract](#)

[View article](#)

[PDF](#)

OPEN ACCESS

012014

Molecular Barcoding Reveals Possible Existence of Sympatric Species of *Emerita emeritus* in South Coast of Cilacap Central Java

A Nuryanto, D Bhagawati, S Rukayah, DRUS Rahayu and DN Wibowo

[+ Open abstract](#)

[View article](#)

[PDF](#)

OPEN ACCESS

012015

Reproductive Characters of the Ricefield Eel (*Monopterus albus* Zuiew) in Babakan Village, Karang Lewas District, Banyumas, Central Java

P Susatyo, R Umami and S Sukmaningrum

[+ Open abstract](#)

[View article](#)

[PDF](#)

OPEN ACCESS

012016

Diversity Dynamics of Semarang Apple (*Syzygium samarangense*)

P Widodo, HA Hidayah and T Chasanah

[+ Open abstract](#) [View article](#) [PDF](#)

OPEN ACCESS

012017

Latency of Sugar Selection Behavior in German Cockroaches, *Blattella germanica* (Dictyoptera: Blattellidae)

TB Ambarningrum, LL Fitri, RE Putra, A Margaretha and I Ahmad

[+ Open abstract](#) [View article](#) [PDF](#)

OPEN ACCESS

012018

The Discontinuous Feeding Effects of *Chlorella vulgaris* Supplemented Feed on the Gourami Body Composition

Sorta Basar Ida Simanjuntak

[+ Open abstract](#) [View article](#) [PDF](#)

OPEN ACCESS

012019

Reproduction Characteristics of Tropical Eel *Anguilla bicolor* McClelland in Different Developmental Stage

FN Rachmawati and Y Sistina

[+ Open abstract](#) [View article](#) [PDF](#)

OPEN ACCESS

012020

Plankton Community and Water Quality During Maximum Tidal Range in Segara Anakan Cilacap

Lukman Adi Nugroho, Agatha Sih Piranti and Moh. Husein Sastranegara

[+ Open abstract](#) [View article](#) [PDF](#)

OPEN ACCESS

012021

Species Richness and Longitudinal Distribution of Macrobenthos at River Pelus in Banyumas

MH Sastranegara, AE Pulungsari, ET Winarni, Kusbiyanto, Febry Ramdani, Lisa Andriyani and DN Putri

[+ Open abstract](#) [View article](#) [PDF](#)

OPEN ACCESS

012022

Chromium Removal of Batik Wastewater using *Aspergillus* sp. and *Penicillium* sp.

RS Dewi, A Mumpuni and RA Yusiana

[+ Open abstract](#) [View article](#) [PDF](#)

OPEN ACCESS

012023

Growth Medium for Intergeneric Hybrids between *Phalaenopsis* 2166 and *Vanda* 'saint valentine'

Murni Dwiati, Triani Hardiyati, Agus Hery Susanto, Titi Chasanah and Dian Palupi

[+ Open abstract](#)



[View article](#)



[PDF](#)

OPEN ACCESS

012024

Metal Concentrations and Bio-Concentration Factor (BCF) in Surface Water and Economical Fish Species from Wadaslintang Multipurpose Dam, Wonosobo, Indonesia

Diana RUS Rahayu, Sutrisno Anggoro and Tri Retnaningsih Soeprbowati

[+ Open abstract](#)



[View article](#)



[PDF](#)

OPEN ACCESS

012025

The Effects of Pineapple Peel in Media In Vitro on The *Phalaenopsis amabilis* Growth

Iman Budisantoso, Kamsinah and Asna Hikmaturosyadah

[+ Open abstract](#)



[View article](#)



[PDF](#)

OPEN ACCESS

012026

Antioxidant Activity and Flavonoid Contents of Daun Dewa (*Gynura pseudochina*) in Various Substrates with Humic Acid Treatment

Elly Proklamasiningsih, Iman Budisantoso, Kamsinah Kamsinah and Pudji Widodo

[+ Open abstract](#)



[View article](#)



[PDF](#)

OPEN ACCESS

012027

The Morphometrical Character of Silver Barb Fish *Barbonymus gonionotus* (Bleeker, 1849)

Suhestri Suryaningsih, Dian Bhagawati, Sri Sukmaningrum, Sugiharto and IGA Ayu Ratna Puspitasari

[+ Open abstract](#)



[View article](#)



[PDF](#)

OPEN ACCESS

012028

The Effect of Cobalt 60 Gamma Rays Irradiation on Anatomical Characters and Chlorophyll Content of Winged-Bean (*Psophocarpus tetragonolobus* (L.) DC)

Siti Samiyarsih, Dian Palupi, Nur Fitrianto and Nettyani Naipospos

[+ Open abstract](#)



[View article](#)



[PDF](#)

OPEN ACCESS

012029

Extracting Genomic DNA of Fossilised Pollens from Volcanic Soil Sediment of Liyangan Site-Central Java

ND Sasongko, Windriyani, Siswanto and S Aziz

[+ Open abstract](#)



[View article](#)



[PDF](#)

OPEN ACCESS

012030

Modified Tea Bag Biosorbent as Cr (VI) Removal in Batik Wastewater

Sri Lestari, Ratna Stia Dewi, Eko Setio Wibowo and Atang

[+ Open abstract](#)

[View article](#)

[PDF](#)

OPEN ACCESS

012031

Impact of Wild Bees (*Apis cerana*) and Stingless Bees (*Tetragonula laeviceps*) to Some Crops of Small-Scale Farm in West Java

RE Putra, FA Rustam, M Rosmiati and I Kinasih

[+ Open abstract](#)

[View article](#)

[PDF](#)

OPEN ACCESS

012032

Development of Genetically Improved Farmed African Catfish, *Clarias gariepinus*; A Review and Lessons Learned from Indonesian Fish Breeding Program

Imron Imron, Bambang Iswanto, Rommy Suparapto and Huria Marnis

[+ Open abstract](#)

[View article](#)

[PDF](#)

OPEN ACCESS

012033

The Utilization of Seaweeds as An Inexpensive Source of New Drugs Agent

BFSP Negara, Oktoviani, E Nugraheni, AB Kusuma, R Kontesa, ED Putra, D Siallagan, NE Herliany and D Purnama

[+ Open abstract](#)

[View article](#)

[PDF](#)

OPEN ACCESS

012034

The Correlation Between Coral Cover and The Associated Reef Fishes Abundance in Enggano Island Bengkulu

AB Kusuma, PP Renta, D Purnama, BFSP Negara, C Claudea, T Budiharto and I Kholid

[+ Open abstract](#)

[View article](#)

[PDF](#)

OPEN ACCESS

012035

Synedrella nodiflora (L.) Gaertn Populations in Sumatra Island Showed Low Genetic Differences: A study based on the intergenic spacer *atpB* – *rbcL*

Agus Hery Susanto, Agus Nuryanto and Budi Setiadi Daryono

[+ Open abstract](#)

[View article](#)

[PDF](#)

OPEN ACCESS

012036

Production of Pectinase Enzymes by *Colletotrichum acutatum* Simmonds. Causing Anthracnose in Red Chilli (*Capsicum annum*, L.)

JS Muljowati, L Soesanto and LH Nugroho

[+ Open abstract](#)

[View article](#)

[PDF](#)

OPEN ACCESS

012037

Phenetic Taxonomy of Local Duku (*Lansium parasiticum* (Osbeck) K.C. Sahni & Bennet) from Three Regencies Based on Micromorphological Characters

Wiwik Herawati, Sukarsa and Hexa Apriliana Hidayah

[+ Open abstract](#)[View article](#)[PDF](#)**OPEN ACCESS**

012038

Water Quality Status of Segara Anakan Cilacap Indonesia for Biota Life

AS Piranti, DRUS Rahayu, ER Ardli, N Setyaningrum, DS Widyartini and I Insan

[+ Open abstract](#)[View article](#)[PDF](#)**OPEN ACCESS**

012039

Diversity of *Trichodina* spp. on The Larvae of Freshwater Fish in Banyumas and Surrounding Areas of Central Java

Rokhmani, Darsono and Edy Riwidiharso

[+ Open abstract](#)[View article](#)[PDF](#)**OPEN ACCESS**

012040

Performance of Black Soldier Fly, *Hermetia illucens*, Larvae during valorization of organic wastes with changing quality

I Kinasih, Y Suryani, E Paujiah, RA Ulfa, S Afiyati, YR Adawiyah and RE Putra

[+ Open abstract](#)[View article](#)[PDF](#)**JOURNAL LINKS**[Journal home](#)[Journal scope](#)[Information for organizers](#)[Information for authors](#)[Contact us](#)[Reprint services from Curran Associates](#)



PAPER • OPEN ACCESS

Molecular Barcoding Reveals Possible Existence of Sympatric Species of *Emerita emeritus* in South Coast of Cilacap Central Java

To cite this article: A Nuryanto *et al* 2020 *IOP Conf. Ser.: Earth Environ. Sci.* **593** 012014

View the [article online](#) for updates and enhancements.

239th ECS Meeting

with the 18th International Meeting on Chemical Sensors (IMCS)

ABSTRACT DEADLINE: DECEMBER 4, 2020

May 30-June 3, 2021

SUBMIT NOW →



Molecular Barcoding Reveals Possible Existence of Sympatric Species of *Emerita emeritus* in South Coast of Cilacap Central Java

A Nuryanto, D Bhagawati, S Rukayah, DRUS Rahayu, and DN Wibowo

Faculty of Biology, Jenderal Soedirman University, Purwokerto, Indonesia

E-mail: anuryanto2003@yahoo.com

Abstract. Cilacap Regency resides in the southern part of Central Java. It faces the Indian Ocean and has a quite long coastline with sandy beaches as the favorable habitats for mole crabs. Careful examinations on previously identified as *Emerita emeritus* samples from Cilacap, the mole crabs showed slight morphological differences to *Emerita emeritus* Linnaeus. We assume that our samples are sympatric species of *E. emeritus* complex rather than *E. emeritus* Boyko. A length of 560 bp fragments of the cytochrome oxidase 1 was sequenced. Homology test resulted in 83 - 86% sequences similarity to *E. emeritus* sequence available in GenBank (KR047035). Our samples also had high genetic distances (0.152 - 0.155) to the sequence of KR047035. The phylogenetic tree showed a clear separation between our samples and reference sequence (*Emerita emeritus* KR047035) with a quite long branch. Those all three kinds of data prove that our *Emerita* samples are most likely not belong to previously identified *Emerita emeritus* Boyko although it shows only slight morphological differences. These results indicate that possible cryptic species of *Emerita emeritus* or *E. emeritus* complex inhabits sandy beaches in Cilacap coast. It has been described that cryptic species are common in aquatic organisms. However, we need more samples to examine and strengthen our finding.

1. Introduction

Sand crabs or mole crabs, also locally known as "undur-undur laut" or "yutuk" belong to Decapoda. They live in sandy habitats of the tidal areas. Geographic distributions of sand crabs span across the Indo-Pacific region. In Indonesia, these crabs inhabit the South Coast of Java, West Coast of Sumatera and Moluccas [1].

Previous observation confirmed that sand crabs were also live in the southern coastline of Cilacap Regency, especially in Widarapayung Wetan, Sidayu, and Widarapayung Kulon. It was reported that three different species of mole crabs, namely *Emerita emeritus* (yutuk jambe), *Hippa adactyla*, and *Albunea symmysta* inhabited those three areas [2].

The detail and careful examination on previously identified as *E. emeritus* samples from those mentioned areas demonstrated subtle morphological differences to the reference specimens of *E. emeritus* Linnaeus [1]. These species belong to Hippoidea [1]. It has been well-known that mole crabs from superfamily Hippoidea show high morphological variability [3-5]. A similar phenomenon is also observed on other mole crabs in the genus *Albunea*. The morphological variations in *Albunea* lead to an uncertain classification of the genus [6].



Morphological differences between our samples, which were previously identified as *E. emeritus*, and *Emerita emeritus* (Linnaeus 1767), indicate that our specimens are different species and possibly indicate sympatric species (sibling), or cryptic species, or complex species of *E. emeritus*. Cryptic species and complex species are common phenomena in aquatic biota [7], which might lead to misidentification when performed based on morphological characters solely. Cryptic species phenomenon occurs in stingray [8], whereas complex species phenomena have been reported in giant clams [9].

Misidentification in sympatric, cryptic, or complex species can be avoided through the application of DNA barcoding using a short fragment of DNA [10–12]. This technique has been successfully applied from species to subspecies levels, which is very hard to differentiate or identify based on morphological characters such as cryptic species [13,14]. The cytochrome c oxidase I (COI) gene is a common marker for species identification in animal [10]. Previous studies have determined that the COI has been successfully used in species identification of wide ranges of animal phyla [11,15–20]. Therefore, it is expected that the fragment of COI gene can be used as a barcode marker on species-level identification to strengthen the taxonomic status of "Emerita" samples from the south coast of Cilacap, especially from Widarapayung Wetan, Sidayu, and Widarapayung Kulon.

2. Methods

The study was run from April to November 2018 with samples taken from Widarapayung Wetan, Sidayu, and Widarapayung Kulon Coastlines Cilacap Regency, Central Java (Figure 1). Molecular analysis was performed in Animal Taxonomy Laboratory, Faculty of Biology, Universitas Jenderal Soedirman Purwokerto, Central Java.

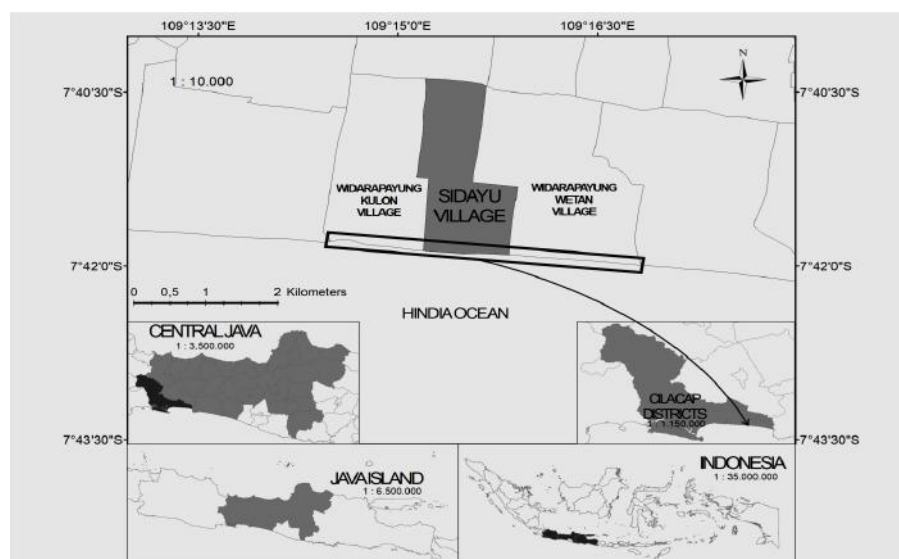


Figure 1. Sampling sites (source: Indonesia 2018©DigitalGlobe, Google Earth © 2018 Google, modified S.S. Asmarani, 2018).

This study used a survey method with incidental sampling. Mole crab samples were collected using two different fishing gears, “sodo net” and “sorok bamboo.” The local fishermen assisted the sample collections. Small pieces of pereopod tissues were collected and preserved in 96% ethanol for DNA analysis.

Genomic DNA was extracted from the tissue samples using Chelex100® technique [21] with subtle modification in incubation time. The fragment of the COI gene was amplified using a pair of universal primer of LCO 1490: 5'-GGT CAA CAA ATC ATA AAG ATA TTG G-3' and HCO 2198:

5'-TAA ACT TCA GGG TGA CCA AAA AAT CA-3' (22). The PCR reaction was set up to 50 µl of total volume. The PCR mixtures contained 29.8 µl of ddH₂O; 1X PCR buffer, 5 mM of MgCl₂, 0.01 mM of each primer 0.05 mM of dNTPs, 1 U Taq polymerase, and 4 µl of template DNA. The arranged thermal condition was as follow: 95 °C pre-denaturation for 5 minutes, continued to 35 cycles with denaturation phase for 1 minute on 94 °C, annealing on 54 °C for one minute, extension for 1.5 minutes on 72 °C. The final extension was performed for 10 minutes on 72 °C [23]. The PCR products were then migrated in 1% agarose gel and visualized over UV-transilluminator. Strong and clear PCR products were shipped to 1st BASE for sequencing (www.base-asia.com).

Nucleotide sequences of the COI gene were aligned and edit manually in Bioedit (Ver. 7.0.5.; Hall, 1999). Multiple alignments of all sequences were done in bioedit. The nucleotide sequences of the samples were submitted to the database to obtain the accession number. Species-level identification was based on the homology values of the samples with references conspecific sequences *Emerita emerita* KR047035 and *Emerita emerita* AF246159. The result of homology test was strengthening by phylogenetic analysis through reconstructing the taxonomic tree. The taxonomic tree was reconstructed in MEGA 6.0 [24] based on the neighbor-joining algorithm and substitution model of Kimura-2 Parameter (K2P). Branching pattern of the taxonomic tree was supported by 1000 non-parametric pseudo-replicates. The polarity of the branching pattern was resulted by using *Blepharipoda occidentalis* AF437625 as an out-group comparison.

3. Results

A total of four sequences have been resulted from morphologically divergences samples of previously identified as *Emerita emerita*. Multiple sequences aligned together with references species and the out-group species resulted in a length of 507 bp fragment of the COI gene. Homology test based on 3% cutoff genetic divergences either to references sequences in bold system or GenBank database resulted in sequences similarity values of 83% - 86% (KR047035). This means that genetic divergences between our samples and references species (KR047035) ranged from 14% up to 17%. Average genetic divergences among our samples were 0.000. Genetic divergences among our samples and between our samples and reference species (KR047035) and also out-group species (AF437625) are presented in Table 1.

Table 1. The Kimura 2 parameter genetic divergences among samples and between samples and references species and also out-group species

Specimens	1	2	3	4	5	6	7
Sample_Clp_4		0.000	0.000	0.000	0.018	0.083	0.083
Sample_Clp_11	0.000		0.000	0.000	0.018	0.083	0.083
Sample_Clp_15	0.000	0.000		0.000	0.018	0.083	0.083
Sample_Clp_E8	0.000	0.000	0.000		0.018	0.083	0.083
<i>Emerita emerita</i> KR047035	0.142	0.142	0.142	0.142		0.107	0.089
<i>Emerita emerita</i> AF246159	0.934	0.934	0.934	0.934	1.075		0.025
<i>Blepharipoda occidentalis</i> AF437625	0.922	0.922	0.922	0.922	0.977	0.229	

The Kimura 2 parameter neighbor-joining tree showed that our samples formed the monophyletic group. The tree also indicates that our samples are becoming sister taxa to *Emerita emerita* (Figure 2).

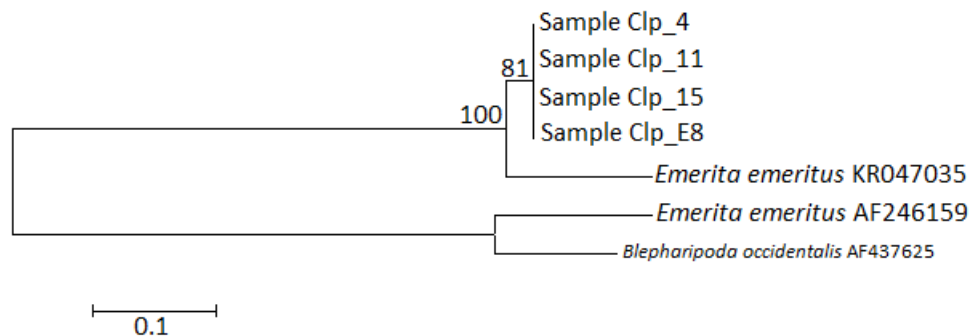


Figure 2. The K2P neighbor-joining tree showing monophyly of our samples and polyphyly between our samples and *Emerita emeritus* KR047035.

4. Discussion

Genetic divergence between our samples and reference species of *Emerita emeritus* (KR0470335) was much higher than 3% cutoff genetic divergence as a species border implemented in the bold system. According to this cutoff value, our specimen cannot be referred to the same species as reference species (*E. emeritus*). As high as 5.41% genetic divergences are observed between the west and east Americas populations of *E. talpoida* and of 3.47% among *E. analoga* populations [25]. Both genetic divergence values strengthen our decision that those genetic divergences of 14 – 17% between our samples and previously described *E. emeritus* are different species. Even, if we use recent standard, i.e., species level can be defined based on maximum genetic divergence of 8.5% [26], our samples cannot be identified as a single species as referred to bold system database of *Emerita emeritus* (KR047035). High genetic divergence between our samples and the reference species indicates that our samples differ from *Emerita emeritus*. However, since our samples have high similarity in their morphological characteristics to the reference, and collected in the same habitat as *E. emeritus*, they can be referred as sympatric species or sibling species from *E. emeritus*.

Although our samples genetically identified as a different species, according to 14 – 17% of genetic divergences between our mole crab samples and reference species of *Emerita emeritus*, we are convinced that our samples belong to the same genus as *Emerita emeritus*. We refer to several previous studies which provide evidences that genetic divergences between species within a genus can be more than 6% [18,26–28].

In Figure 2, we observe that our mole crab samples are separated from the reference species *E. emerita* with branch length more than 0.1 genetic divergences when we compared to the scale as indicated below the NJ tree. The tree also demonstrates that all our mole crabs form a monophyletic group and place as sister taxa of *E. emeritus*. Strong bootstraps values support the grouping of all our samples (81) and separation between our samples and the reference species (100). This clear separation between our mole crabs and *E. emeritus* confirms that our mole crabs are different species from *E. emeritus*. However, in a higher rank, our samples form a monophyletic group together to the reference species with branch length only slightly higher than the scale below the figure. This finding indicates that our samples can be identified as the same genus as *E. emeritus*.

Another interesting finding was that genetic divergence among our samples was 0.000. This value provides strong evidence that our samples belong to a single species. Individuals can be referred to as a single species if they have a genetic divergence between 1% and 3% [28]. Similar results report that genetic divergence among individuals within species Acanthuridae ranges from 0.000 up to 0.010, and between 0.000 and 0.009 in Holocentridae depending on the genera [29]. Moreover, genetic divergences between species range from 0.081 ± 0.014 to 0.110 ± 0.018 with maximum values between 0.09 and 0.140 in Acanthuridae, while in Holocentridae the mean value ranges from 0.063 ± 0.012 up to 0.102 ± 0.038 with maximum divergences between 0.080 and 0.138. Those results strengthen our

decision that all of our four samples belong to a single species, and they are different species from *Emerita emeritus* KR047035.

It has been explained in numerous publications that the superfamily Hippoidea shows high morphological variability, and also in Albunea [3–5]. These morphological variations lead to an uncertain classification of those mole crabs [6]. Our finding on highly genetic divergences specimen from the south coast of Cilacap that is compared to previously identify *Emerita emeritus* proves and increases the complexity of mole crab classification.

5. Conclusion

Based on their genetic divergences, we conclude that morphologically similar samples of mole crabs from Cilacap are genetically different species from *Emerita emeritus*. High morphological similarities between our samples and *Emerita emeritus* indicate that our samples can be referred to as sympatric or sibling species of *Emerita emeritus*. Our samples belong to a single species and form sister taxa to *E. emeritus*. The mole crabs from the south coast of Cilacap can be placed into single genus as *Emerita emeritus*.

References

- [1] Boyko C B and Harvey A W 1999 Crustacea Decapoda: Albuneidae and Hippidae of the tropical Indo-West Pacific region *Mémoires du Muséum Natl d'Histoire Nat Paris* **180** 379–406
- [2] Bhagawati D, Anggoro S, Zainuri M and Sya'rani L 2016 Ethnotaxonomical study of mole crab (Crustacea: Hippoidea) on coastal community of Cilacap *Biosaintifika: Journal of Biology & Biology Education* **8** 222
- [3] Poore G C B 2004 *Marine Decapod Crustacea of Southern Australia: A Guide to Identification* (Australia: Csiro Publishing) p 616
- [4] Ah Yong S T, Schnabel K E and Maas E 2009 *Anomuran phylogeny: new insights from molecular data (Decapod Crustacean Phylogenetics)* ed J W Martin, K A Crandall and D L Felder (Boca Raton: CRC Press)
- [5] Schnabel K E and Ah Yong S T 2010 A new classification of the Chirostyloidea (Crustacea: Decapoda: Anomura) *Zootaxa* **64** 56–64
- [6] Boyko C B and McLaughlin P A 2010 Annotated checklist of Anomuran Decapod Crustaceans of the world (exclusive of the Kiwaoidea and families Chirostylidae and Galatheidae of the Galatheoidea) Part IV – Hippoidea *Raffles Bull. Biol.* **23** 139–51
- [7] Bickford D, Lohman D J, Sodhi N S, Ng P K L, Meier R, Winker K, Ingram K K and Das I 2007 Cryptic species as a window on diversity and conservation *Trends. Ecol. Evol.* **22** 148–55
- [8] Arlyza I S, Shen K N, Solihin D D, Soedharma D, Berrebi P and Borsa P 2012 Species boundaries in the Himantura uarnak species complex (Myliobatiformes: Dasyatidae) *Mol. Phylogenet. Evol.* **66** 429–35
- [9] Su Y, Hung J H, Kubo H and Liu L L 2014 *Tridacna noae* (Röding, 1798) - A valid giant clam species separated from *T. maxima* (Röding, 1798) by morphological and genetic data *Raffles Bull. Zool.* **62** 124–35
- [10] Bucklin A, Frost B., Bradford-Grieve J, Allen L D and Copley N J 2003 Molecular systematics and phylogenetic assessment of 34 calanoid copepod species of the Calanidae and Clausocalanidae *Mar. Biol.* **143** 333–43
- [11] Hebert P D N, Ratnasingham S and DeWaard J R 2003 Barcoding animal life: cytochrome c oxidase subunit 1 divergence among closely related species. *Proc. R. Soc. Lond. B.* **270** S96–9.
- [12] von der Heyden S, Beger M, Toonen R J, van Herwerden L, Juinio-Meñez M A, Ravago-Gotanco R, Fauvelot C and Bernardi G 2014 The application of genetics to marine

- management and conservation: examples from the Indo-Pacific *Bull Mar Sci.* **90** 123–58
- [13] Matarese A C, Spies I B, Busby M S and Orr J W 2011 Early larvae of *Zesticelus profundorum* (family Cottidae) identified using DNA barcoding *Ichthyol Res.* **58** 170–4
- [14] Ko H L, Wang Y T, Chiu T S, Lee M A, Leu M Y, Chang K Z, Chen W Y and Shao K T 2013 Evaluating the accuracy of morphological identification of larval fishes by applying DNA barcoding *PLoS One* **8** e53451
- [15] Nuryanto A, Duryadi D, Soedharma D and Blohm D 2007 Molecular phylogeny of giant clams based on mitochondrial DNA cytochrome C Oxidase I gene *HAYATI J Biosci.* **14** 162–6
- [16] Hebert P D N, Cywinska A, Ball S L and DeWaard J R 2003 Biological identifications through DNA barcodes *Paul. Proc R Soc Lond B.* **270** 313–21
- [17] Hebert P D N, Stoeckle M Y, Zemlak T S and Francis C M 2004 Identification of birds through DNA barcodes *PLoS Biol.* **2** e312
- [18] Hubert N, Meyer C P, Bruggemann H J, Guérin F, Komeno R J L, Espiau B, Causse R, Williams J T and Planes S 2012 Cryptic diversity in Indo-Pacific coral-reef fishes revealed by DNA-barcoding provides new support to the center-of-overlap hypothesis *PLoS One* **7** e28987
- [19] de Waard J R, Hebert P D N and Humble L M 2011 A comprehensive DNA barcode library for the looper moths (Lepidoptera: Geometridae) of British Columbia, Canada *PLoS One* **6** 1–6
- [20] Nuryanto A, Pramono H and Sastranegara M H 2017 Molecular identification of fish larvae from East Plawangan of Segara Anakan, Cilacap, Central Java, Indonesia *Biosaintifika Journal of Biology & Biology Education* **9** 33
- [21] Walsh P S, Metzger D A and Higuchi R 2013 Biotechniques 30th anniversary gem Chelex 100 as a medium for simple extraction of DNA for PCR-based typing from forensic material *Biotechniques* **54** 506–13
- [22] Folmer O, Black M, Hoeh W, Lutz R, Vrijenhoek+ R. 1994. DNA primers for amplification of mitochondrial cytochrome c oxidase subunit I from diverse metazoan invertebrates *Mol Mar Biol Biotechnol.* **3** 294–9
- [23] Ward R D, Zemlak T S, Innes B H, Last P R and Hebert P D N 2005 DNA barcoding Australia's fish species *Phil Trans R Soc B* **360** 1847–57
- [24] Tamura K, Stecher G, Peterson D, Filipski A and Kumar S 2013 MEGA6: Molecular evolutionary genetics analysis version 6.0. *Mol Biol Evol.* **30** 2725–9
- [25] Tam Y K, Kornfield I and Ojeda F P 1996 Divergence and zoogeography of mole crabs, *Emerita* spp. (Decapoda : Hippidae), in the Americas *Mar Biol.* **125** 489–97
- [26] Pereira L H G, Hanner R, Foresti F and Oliveira C 2013 Can DNA barcoding accurately discriminate megadiverse Neotropical freshwater fish fauna? *BMC Genet* **14** 1–14
- [27] Hubert N, Hanner R, Holm E, Mandrak N E, Taylor E, Burrridge M, Watkinson D, Dumont P, Curry A, Bentzen P, Zhang J, April J and Bernatchez L 2008 Identifying Canadian freshwater fishes through DNA barcodes *PLoS One* **3** e2490
- [28] Pegg G G, Sinclair B, Briskey L and Aspden W J 2006 MtDNA barcode identification of fish larvae in the southern Great Barrier Reef, Australia *Sci Mar.* **70S2** 7–12
- [29] Hubert N, Delrieu-Trottin E, Irisson J O, Meyer C and Planes S 2010 Identifying coral reef fish larvae through DNA barcoding: a test case with the families Acanthuridae and Holocentridae *Mol Phylogenet Evol.* **55** 1195–203