

## Profile International Journal of Supply Chain Management

The screenshot shows the homepage of the International Journal of Supply Chain Management (IJSCM) website. The browser address bar displays [ojs.excelingtech.co.uk/index.php/IJSCM/index](http://ojs.excelingtech.co.uk/index.php/IJSCM/index). The page features a blue header with the journal's logo, which includes the text "ExcelingTech" and "Join the Knowledge". To the right of the logo, the journal title "International Journal of Supply Chain Management" is displayed in large white text, followed by the ISSN: 2050-7399 (Online), 2051-3771 (Print). Below the header, a navigation menu includes links for HOME, ABOUT, LOGIN, REGISTER, SEARCH, CURRENT, ARCHIVES, ANNOUNCEMENTS, EDITORIAL BOARD, and ONLINE. A sidebar on the right contains a USER login section with fields for Username and Password, and a "Remember me" checkbox. Below this is a "JOURNAL CONTENT" section with a search bar and a "Browse" dropdown menu. The main content area is titled "International Journal of Supply Chain Management" and contains a paragraph describing the journal as a peer-reviewed indexed journal. It lists the journal's focus on original, high-quality research and its acceptance of various research methodologies. A list of criteria for manuscript acceptance is provided, including research papers in SCM, rigorous methodologies, and managerial relevance. The journal also mentions its indexing in DOAJ, EBSCO, Google Scholar, Scirus, GetCited, Scind, CiteSeer, Nijmegen, SIS, and so on. The page number "Page: 2" is visible at the bottom left.

International Journal of Supply Chain Management (IJSCM) is a peer-reviewed indexed journal. ISSN: 2050-7399 (Online), 2051-3771 (Print), that publishes original, high quality, supply chain management empirical research that will have a significant impact on SCM theory and practice. Manuscripts accepted for publication in IJSCM must have clear implications for Supply chain managers based on one or more of a variety of rigorous research methodologies. IJSCM also publishes insightful meta-analyses of the SCM literature, conceptual/theoretical studies with clear implications for practice, comments on past articles, studies concerning the SCM field itself, and other such matters relevant to SCM.

Regular articles accepted for publication in IJSCM must have clear implications for practitioners who manage product and process design, operations, and supply chains based on one or more of a variety of rigorous research methodologies. Manuscripts accepted for publication must meet the following criteria:

1. Research papers in the field of SCM in manufacturing and services.
2. Research rigor applied through the scientific theory-building approach.
3. Managerial relevance.
4. All manuscripts should be submitted in English.

The journal welcomes high-quality original research papers, survey papers, review papers, tutorials, technical notes as well as discussion papers.

To support this open access journal, we have an honorary charge of USD 200 for the publication of an accepted manuscript.

IJSCM is indexed in DOAJ, EBSCO, Google Scholar, Scirus, GetCited, Scind, CiteSeer, Nijmegen, SIS, and so on.

The screenshot shows the "Announcements" page of the International Journal of Supply Chain Management (IJSCM) website. The browser address bar displays [ojs.excelingtech.co.uk/index.php/IJSCM/index](http://ojs.excelingtech.co.uk/index.php/IJSCM/index). The page features a blue header with the journal's logo, which includes the text "ExcelingTech" and "Join the Knowledge". To the right of the logo, the journal title "International Journal of Supply Chain Management" is displayed in large white text, followed by the ISSN: 2050-7399 (Online), 2051-3771 (Print). Below the header, a navigation menu includes links for HOME, ABOUT, LOGIN, REGISTER, SEARCH, CURRENT, ARCHIVES, ANNOUNCEMENTS, EDITORIAL BOARD, and ONLINE. A sidebar on the right contains a USER login section with fields for Username and Password, and a "Remember me" checkbox. Below this is a "JOURNAL CONTENT" section with a search bar and a "Browse" dropdown menu. The main content area is titled "Announcements" and contains a section for "Call for Papers". It lists the next issue, Vol. 10, No. 5 (October 2021), and provides submission deadlines and publication dates for various issues. The journal also mentions its indexing in DOAJ, EBSCO, Google Scholar, Scirus, GetCited, Scind, CiteSeer, Nijmegen, SIS, and so on. The page number "Page: 1" is visible at the bottom left.

To support this open access journal, we have an honorary charge of USD 200 for the publication of an accepted manuscript.

IJSCM is indexed in DOAJ, EBSCO, Google Scholar, Scirus, GetCited, Scind, CiteSeer, Nijmegen, SIS, and so on.

### Announcements

#### Call for Papers

Next Issue:

Vol. 10, No. 5 (October 2021)

- Full Paper Submission Deadline: July 31, 2021
- Acceptance/Rejection Notification: August 31, 2021
- Publication: October 31, 2021

Vol. 10, No. 4 (August 2021)

- Full Paper Submission Deadline: May 31, 2021
- Acceptance/Rejection Notification: June 30, 2021
- Publication: August 31, 2021

Vol. 10, No. 3 (Publication on June 30, 2021)

Vol. 10, No. 2 (Publication on April 30, 2021)

(200 USD Publication Fee for Accepted Manuscript only)

Posted: 2021-07-14

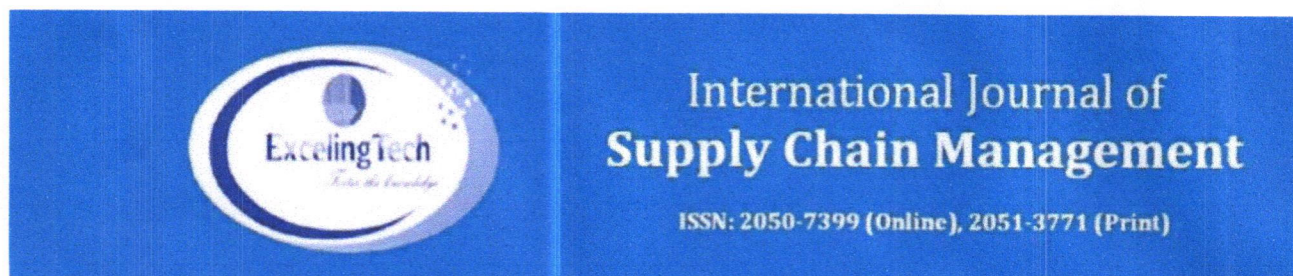
[View Announcements](#)

Vol 10, No 2 (2021): International Journal of Supply Chain Management (IJSCM)

TABLE OF CONTENTS

The cover image shows the journal title "International Journal of Supply Chain Management" and the ISSN: 2050-7399 (Online), 2051-3771 (Print). It also displays the volume and issue information: Vol. 10, No. 2, April 2021. The cover features a globe graphic.





HOME ABOUT LOGIN REGISTER SEARCH CURRENT ARCHIVES  
ANNOUNCEMENTS EDITORIAL BOARD ONLINE SUBMISSION PUBLICATION ETHICS

Home > Archives > Vol 8, No 3 (2019)

## Vol 8, No 3 (2019)

### International Journal of Supply Chain Management (IJSCM)

#### Table of Contents

##### Articles

[The Role of Financial Management in Bringing Efficiency in Supply Chain Management](#)

Ingrid Larasati Agustina, Esa Fauziv, Asep Anwar, Habil Slade Ogalo, Ima Ratnasari

[PDF](#)  
1 - 9

[Role Budget Participation and Budget Slack on Supply Chain Operational Performance: Evidence from Indonesian Textile Industry](#)

Yusro Hakimah, Andhyka Tyaz Nugraha, Hadiati Fitri, Christianus Manihuruk, Masnilam Hasibuan

[PDF](#)  
10 - 22

[The Application of Agency Theory in Supply Chain Finance: A Case of Indonesian Manufacturing Firms](#)

Hadiati Fitri, Elmanizar ., Andhyka Tyaz Nugraha, Andi Yakub, Bambang Priyo Cahyono

[PDF](#)  
23 - 32

[Green Supply Chain Practices and Sustainable Performance: Moderating Role of Total Quality Management Practices in Electronic Industry of Thailand](#)

Kittisak Jermisittiparsert, Puttitsat Namdej, Sudawan Somjai

[PDF](#)  
33 - 46

[Mediating Role of Sustainability Capability in Determining Sustainable Supply Chain Management in Tourism Industry of Thailand](#)

Kittisak Jermisittiparsert, Watcharin Joemsittiprasert, Somsathid Phonwattana

[PDF](#)  
47 - 58

[Determining the Environmental Performance of Indonesian SMEs influence by Green Supply Chain Practices with Moderating Role of Green HR Practices](#)

Kittisak Jermisittiparsert, Parinya Siriattakul, Samanan Wattanapongphasuk

[PDF](#)  
59 - 70

[The Influence of Customer and Technology Supply Chain Integration on Social Sustainable Performance with Moderating Role of Organizational Structure](#)

Kittisak Jermisittiparsert, Thanaporn Sriyakul, Nuanluk Sangperm

[PDF](#)  
71 - 82

[Sustainable Procurement & Sustainable Distribution Influence the Organizational Performance \(Economic, Social and Environmental\): Moderating Role of Governance and Collaboration at Thai Food Industry](#)

Kittisak Jermisittiparsert, Jutamat Sutduean, Chutipan Sutduean

[PDF](#)  
83 - 94

[Impact of Process and Product Modularity on Competitive Performance of Thailand manufacturing firms: Mediating role of Supply Chain Quality Integration](#)

Kittisak Jermisittiparsert, Watcharin Joemsittiprasert, Muhamad Syazali

[PDF](#)  
95 - 106

[The Mediating Role of Innovation Performance between the Relationship of Green Supply Chain Management Skills and Environmental Performance](#)

Kittisak Jermisittiparsert, Jutamat Sutduean, Chutipan Sutduean

[PDF](#)  
107 - 119

[Impact of Quality Management Techniques and System Effectiveness on the Green Supply Chain Management Practices](#)

Kittisak Jermisittiparsert, Puttitsat Namdej, Thanaporn Sriyakul

[PDF](#)  
120 - 130

[The Impact of Supply Chain Capabilities on the Performance of Food Industry in Thailand](#)

Kittisak Jermisittiparsert, Samanan Wattanapongphasuk, Somsathid Phonwattana

[PDF](#)  
131 - 142

[Does Green Supply Chain Management Influence to Suppliers' Performance? Mediating Role of Social Capital](#)

Aimi Zulhazmi Abdul Rashid, Adel Ali Yassin Alzyoud, Fayez Hamed Abdo Al Shdaifat, Khairi Mohamed Omar

[PDF](#)  
143 - 155

[The Forecasting of Foreign Tourists Arrival in Indonesia based on the Supply Chain Management: an Application of Artificial Neural Network and Holt winters Approaches](#)

Agus Supriatna, Elis Hertini, Jumadil Saputra, Betty Subartini, Alfian Azkiya Robbani

[PDF](#)  
156 - 163

[Determining Sustainable Rice Farming through Supply Chain Risk Management: A Case Study in Central Java, Indonesia](#)

Agung Prabowo, Budi Pratikno, Jumadil Saputra, Sukono Sukono

[PDF](#)  
164 - 171

##### USER

Username

Password

☐ Remember me

[Login](#)

##### JOURNAL CONTENT

Search

Search Scope

All

[Search](#)

##### Browse

- [By Issue](#)
- [By Author](#)
- [By Title](#)
- [Other Journals](#)

##### FONT SIZE

##### INFORMATION

- [For Readers](#)
- [For Authors](#)
- [For Librarians](#)



<a href="#">The Zero Sign on Inscriptions and Manuscript Based on the Historical Supply Chain Management: A Case Study of Indonesia Archipelago before Majapahit Era</a>	<a href="#">PDF</a>	172 - 182
Agung Prabowo, Mustafa bin Mamat, Sukono Sukono		
<a href="#">The Influences of Compensation and Supply Chain Management towards Education System: The Mediating Role of Job Motivation</a>	<a href="#">PDF</a>	183 - 191
Faisal Matriadi, Siti Raha Agoes Salim, Ritha F. Dalimunthe, Parapat Gultom		
<a href="#">The relationship of Islamic performance index and intellectual capital by supply chain management toward banking financial performance in Indonesia</a>	<a href="#">PDF</a>	192 - 203
Jummaini Jummaini, Nasir Azis, Faisal Faisal, Hasan Basri, Zikri Muhammad		
<a href="#">Relationship between Supply Chain Management Effects on the Tax Information System and Willingness to Pay Taxes</a>	<a href="#">PDF</a>	204 - 208
Vitra Yozi, Sri Mulyani, Citra Sukmadilaga, Hamdi A Pertama		
<a href="#">State Policy of Supply Chain Management in the Shere of Physical Culture and Sport in the Russian Federation</a>	<a href="#">PDF</a>	209 - 214
Chyvatkin P.P., Rokotyanskaya V.V., Yushin I.V., Usanov A.Yu., Yakh'yaeva M.U.		
<a href="#">Features and Barriers of Information Interaction between Authorities and Citizens Using E-democracy Technologies and Supply Chain Management at Municipal Level</a>	<a href="#">PDF</a>	215 - 221
Ekaterina A. Vetrova, Natalia V. Medvedeva, Elena E. Kabanova, Tatiana A. Evstratova, Lyudmila V. Senicheva		
<a href="#">Developing supply chain strategy for the Success in the Implementation of Maintenance and Preventive Repair at the Kavir Steel Complex</a>	<a href="#">PDF</a>	222 - 233
Mohsen Ghobadi		
<a href="#">Generation Specific Patterns of Supply Chain Communication in the Digital Society</a>	<a href="#">PDF</a>	234 - 244
Vladimir A. Koshel, Tatiana L. Shklyar, Svetlana A. Avtonomova, Marina G. Shilina		
<a href="#">Natural Factors Contributing to the Development of Supply Chain Management in New Biotechnological Production</a>	<a href="#">PDF</a>	245 - 252
A.R. Romanov, R.R. Nogovitsyn, V.E. Borisov		
<a href="#">Regional Practice of Project Management in the Process of Primary Health Care Improvement by using Supply Chain Strategy</a>	<a href="#">PDF</a>	253 - 255
Nataliya N Zubareva, Oleg N. Polukhin		
<a href="#">Assessment of the Supply Chain Management and Problems of Agricultural Production Development and Marketing in Kazakhstan</a>	<a href="#">PDF</a>	256 - 265
Samazhan Y. Umirzakov, Asylbek Zh. Nauryzbayev, Akmaral Zh. Bukharbayeva, Dana A. Bekesheva, Ayzhan K. Oralbayeva		
<a href="#">The Application of International Financial Reporting Standards in the Dairy Horse Breeding in Supply Chain Management</a>	<a href="#">PDF</a>	266 - 274
G.A. Khabirov, Z.Z. Suleymanov, A.M. Ableeva, G.A. Salimova, E.I. Galimova		
<a href="#">Methodology of Assessing Risks to Sustainable supply Chain of an Insurance Company</a>	<a href="#">PDF</a>	275 - 292
Lyudmila Tsvetkova, Tatiana Yurieva, Darya Karpova, Leonid Khuzhamov		
<a href="#">Key Characteristics of Potential of Development of Regional Economy by Supply Chain Strategy</a>	<a href="#">PDF</a>	293 - 300
A.E. Demyanenko		
<a href="#">Selection of Priority Sequence of Investor's Portfolio with the Use of the Supply Chain Management in the Criteria of "Against Nature" Game</a>	<a href="#">PDF</a>	301 - 308
M.A. Gorskiy, M.A. Khalikov, A.Yu. Kukhareno		
<a href="#">Evolutionary Approach to Infrastructure Formation in Russia's Economic Systems with Using Supply Chain Management Strategy for the Mineral Raw Material Specialization</a>	<a href="#">PDF</a>	309 - 320
Ju.V. Luebeck		
<a href="#">Breakthrough Technologies of Financing Pensions Based on the Supply Chain Strategy in the Russian Federation</a>	<a href="#">PDF</a>	321 - 333
Evgeniy Vyacheslavovich Kostyrin, Evgeniy Vasilevich Sokolov, Valentina Vladimirovna Zozulya		
<a href="#">Strategizing the Development of Food Markets in the Region by Employing Supply Chain Management: A Product-Territorial and Product-Spatial Approach</a>	<a href="#">PDF</a>	334 - 340
Natalia Leonidovna Kuzmina, Lyubov Leonidovna Tonysheva, Darya Vladimirovna Chumlyakova		
<a href="#">Applying Consumer Behavior Theory Integrated with Supply Chain Strategy in the Context of the Digital Transformation of the Economy</a>	<a href="#">PDF</a>	341 - 347
Natalya A. Yegina, Elena S. Zemszkova, Vladimir A. Gorin, Diana I. Stepanova		
<a href="#">The Auditor's Use of Third Party Work Based on the Supply Chain Strategy</a>	<a href="#">PDF</a>	348 - 354
Anna Vladimirovna Kravtsova, Julietta Vladimirovna Khachaturova, Aleksey Fedorovich Kolabasov		
<a href="#">Foreign Experience of State Regulation of Innovative Products and Innovations in Supply Chain Management in the Modern Economy</a>	<a href="#">PDF</a>	355 - 362
Ildar M. Ablaev		
<a href="#">Globalization of Supply Chain Management and International Relations in World Economic</a>	<a href="#">PDF</a>	363 - 368
Z.K. Radzhabova, O.R. Radzhabov, M.M. Osmanov, B.I. Shikhsaidov, S.Z. Hidirova, M.Yu. Akhmedova		
<a href="#">Optimization of Business Processes Based on the Supply Chain Management in an Accounting Department</a>	<a href="#">PDF</a>	369 - 379
A.Z. Kintonova, M.A. Yermaganbetova, G.M. Abildinova, N.N. Ospanova, Z.K. Abdugulova, N.S. Glazyrina		
<a href="#">Financial Management Information System within Government Institution and</a>	<a href="#">PDF</a>	

<a href="#">Supply Chain Strategy: Implementation Technology Acceptance Model (TAM)</a> Citrawati Jatiningrum, Rita Irviani, Fauzi Fauzi, Abdul Halim, Supriyadi Supriyadi	380 - 388
<a href="#">The Effect of Supply Chain Strategy and Marketing Mixes on Purchase Decisions</a> <a href="#">Sharia Productin Palembang Region</a> Sri Rahayu, Cica Satria	<a href="#">PDF</a> 389 - 395
<a href="#">The Study of Supply Chain strategy, Educational Basics, Community</a> <a href="#">Perceptions on Several Hindu Sampradaya at Singaraja Town, Bali</a> I Wayan Suwendra	<a href="#">PDF</a> 396 - 415
<a href="#">Agile Supply Chain Management in Multinational Corporations: Opportunities</a> <a href="#">and Barriers</a> Pavel V.Zhukov, Alexander A.Silvanskiy, Kirill Y.Mukhin, Olga L.Domnina	<a href="#">PDF</a> 416 - 425
<a href="#">Cognitive Transformation Reflections Based on the Supply Chain Management</a> <a href="#">and 5s Requirements (An Analytical Descriptive Study of a Sample of Workers</a> <a href="#">in Zaki / Iraq Factory in the Province of Dohuk)</a> Alaa Aljalely, Manal Alsammak	<a href="#">PDF</a> 426 - 434
<a href="#">Analysis of the Effect of Supply Chain Management and Pricing Theory on</a> <a href="#">Excess Return of Stocks</a> Andre Hernowo, Disman Disman, Ikaputera Waspada, Nugraha Nugraha	<a href="#">PDF</a> 435 - 442
<a href="#">The Entrepreneurial Competence, Impact of Business Environment and Supply</a> <a href="#">Chain Strategy on Smes Performance: The Intervening Role of Motivation</a> Agus Setyo Pranowo, Suryana Suryana, M.S Disman, H Mulyadi	<a href="#">PDF</a> 443 - 448
<a href="#">Generation Specific Patterns of Communication based on the Supply Chain</a> <a href="#">management in the Digital Society</a> Vladimir A.Koshel, Tatiana L.Shklyar, Svetlana A.Avtonomova, Marina G.Shilina	<a href="#">PDF</a> 449 - 459
<a href="#">Impact of Supply Chain Strategy and Change Order on Contractorsâ€™ Cash</a> <a href="#">Flow in Jordanian Construction Industry: A Case Study of Basic Educational</a> <a href="#">School Construction</a> Altayeb Qasem, M. Murad Zaid, Emhaidy S.Gharaibeh	<a href="#">PDF</a> 460 - 473
<a href="#">Evaluating the Moderating Role of Innovation and Supply Chain Strategy in</a> <a href="#">Relation between Environmental Uncertainty and Organizational Performance</a> Morteza Ghasanfari, Hossein Hemati, Mohammad Parsa	<a href="#">PDF</a> 474 - 482
<a href="#">Features of Material Flow Accounting for the Efficient Supply Chain Management</a> Vladimir B.Zotov, Sergey S.Demin, Irina Y.Glazkova	<a href="#">PDF</a> 483 - 492
<a href="#">Analogy of Law in Tax Law Regulation of Economic Relations Based on the</a> <a href="#">Supply Chain Management</a> Viktor Alekseevich Mikryukov	<a href="#">PDF</a> 493 - 502
<a href="#">Evaluation of Supply Chain Management Effects on Consumer Preference for</a> <a href="#">Cowpea Quality Features and Price Trend in Niger State</a> Onodugo Vincent A, Anowor Oluchukwu F, Ifediora Chuka, Aliyu Nasiru	<a href="#">PDF</a> 503 - 516
<a href="#">Algorithm for Making Administrative Decisions in Supply Chain Management at</a> <a href="#">the Stages of "Life Cycle" of Enterprise</a> N.G Antonchenko, V.A Saydasheva	<a href="#">PDF</a> 517 - 521
<a href="#">Cluster Approach for Development of Tourism Infrastructure Based on the</a> <a href="#">Supply Chain Management in the Region</a> Liliya Raisovna Fakhrutdinova, Gulnara Raisovna Chumarina, Boris Mojshevich Eidelman, Oleg Aleksandrovich Bunakov	<a href="#">PDF</a> 522 - 525
<a href="#">Digitalization Processes in Supply Chain Management as a Factor of Forming</a> <a href="#">Smart Cities and the Improvement of the Quality of Urban Environment</a> Guzel Rachitovna Safina, Benedict Essuman-Quainoo, Viktoria Alekseevna Fedorova	<a href="#">PDF</a> 526 - 529
<a href="#">Investigation of the Supply Chain Strategy Effects on Substantive Legal</a> <a href="#">Framework and Problems of Iraqi Local Authorities' Activity in the Social</a> <a href="#">Sphere</a> Evgeny Batyrovich Sultanov, Jaafar Haser Abdulrida	<a href="#">PDF</a> 530 - 535
<a href="#">Linking Contractor-Supplier Commitment in the Relationship of Customer</a> <a href="#">Orientation, Channel Member and Company Performance in the Construction</a> <a href="#">Industry</a> Noorhanaliza Mohtar, Sofiah Abd Rahman	<a href="#">PDF</a> 536 - 540
<a href="#">Cost and Return Analysis of System of Rice Intensification (SRI): Evidence from</a> <a href="#">Major Rice Producing Areas in Malaysia</a> Nur Fatin Munirah Aris, Fazleen Abdul Fatah	<a href="#">PDF</a> 541 - 546
<a href="#">The Influence of Innovation Types towards Small Medium Enterprises</a> <a href="#">Performance: A Study of Malaysian Manufacturing Industry</a> RAMITA ABDUL RAHIM, Nik Hasnaa Nik Mahmood, Maslin Masrom	<a href="#">PDF</a> 547 - 553
<a href="#">Segmenting Consumers Purchase Intention towards Edible Birdâ€™s Nest</a> <a href="#">Products Using the Decision Tree Techniques</a> Nurul Nabilah Huda Mohamad Shukri, Nollia Mohd Nawi, Amin Mahir Abdullah, Norsida Man	<a href="#">PDF</a> 554 - 559
<a href="#">Assessing the Islamic Values in the Halal Supply Chain of the Poultry Industry</a> Emi Normalina Omar, Harlina Suzana Jaafar, Muhamad Rahimi Osman, Nasruddin Faisol	<a href="#">PDF</a> 560 - 564
<a href="#">Unmanned Aerial Vehicle (UAV) and ArcGIS for Shipping Container Counting</a> Muhammad Afq Abdullah, Jasmee Jaafar, Khairul Nizam Tahar, Wan Mazlina Wan Mohamed	<a href="#">PDF</a> 565 - 569
<a href="#">Sustainable Urban Bus Service Assessment and Tourists' Satisfaction</a> Syazwan Baharum, Suria Haron, Siti Zaharah Ishak, Syahirah Mansor	<a href="#">PDF</a> 570 - 575
<a href="#">Urban Bus Service Quality through Sustainable Assessment Model</a>	<a href="#">PDF</a>



Syazwan Baharum, Suria Haron, Iqhlma Ismail, Jeza Md Diah	576 - 585
<a href="#">Innovation Capabilities and Logistics Service Quality of Malaysian Third- Party Logistics (3PL) Service Providers: A Comprehensive Review of the Relevant Literature</a>	<a href="#">PDF</a> 586 - 591
Siti Nur Atikah Zulkiffli, Maisarah Sebadak, Siti Falindah Padlee, Juhaizi Mohd Yusof	
<a href="#">Supply Chain Process of Environmental Information System: Exploratory Factor Analysis</a>	<a href="#">PDF</a> 592 - 595
Nurul Fadly Habidin, Sharul Effendy Janudin, Norlaile Salleh Hudin, Mohd Nazir Md Zabir, Nursyazwani Mohd Fuzi, Sharon Yong Yee Ong	
<a href="#">Environmental Information System: Conceptual Framework of Supply Chain Process</a>	<a href="#">PDF</a> 596 - 599
Nurul Fadly Habidin, Sharul Effendy Janudin, Norlaile Salleh Hudin, Mohd Nazir Md Zabir, Nursyazwani Mohd Fuzi, Sharon Yong Yee Ong	
<a href="#">Sustainable Supply Chain Management: Factor Analysis</a>	<a href="#">PDF</a> 600 - 604
Nurul Fadly Habidin, Aqmar Nur Izzah Norazlan, Nursyazwani Mohd Fuzi	
<a href="#">5S Lean Tool, Value Stream Mapping and Warehouse Performance: Conceptual Framework</a>	<a href="#">PDF</a> 605 - 608
Mohd Fadzil Harun, Nurul Fadly Habidin, Nor Azrin Md Latip	
<a href="#">Towards Sustainable Performance: Promoting Eco-Design in Green Supply Chain Management Practices</a>	<a href="#">PDF</a> 609 - 616
Rohani Abdullah, Marini Nurbanum Mohamad, Ramayah Thurasamy	
<a href="#">An Evaluation towards the Service Quality for the Tourism Sector in the East Coast Economic Region (ECER), Malaysia</a>	<a href="#">PDF</a> 617 - 621
Mohd Saiful Izwaan Saadon, Aleff Omar Shah Nordin, Nur Amalina Mohamad Zaki, Tan Owee Kowang, Norshahrizan Nordin	
<a href="#">Empirical Implementation of Industry 4.0 Model among Malaysian and Nigerian SMEs</a>	<a href="#">PDF</a> 622 - 632
Maruf Gbadebo Salimon, Haim Hilman Abdullah, Abdullahi Hassan Gorondutse, Shahmir Sivaraj Bin Abdullah, Abdullahi Tafida, Yusha'u I. Ango, Hellen Andow, Ahmed B. Abdul-Qadir	
<a href="#">The Impact of Corporate Governance on Operating Performance during Goods &amp; Services Tax Implementation in Malaysia</a>	<a href="#">PDF</a> 633 - 643
Sitraselvi Chandren, Ayoib Che Ahmad, Arifatul Husna Mohd Ariff, Santhirasegaran Nadarajan	
<a href="#">Payment Issues in Industrialized Building System (IBS) Projects in Malaysia: Towards a Better Approach</a>	<a href="#">PDF</a> 644 - 650
Mohd Nasrun Mohd Nawli, Salman Riazi Mehdi Riazi, Radzi Ismail, Muhammad Fazlisha Shaharizan, Riduan Yunus, Omar Saleh Alhawattmeh	
<a href="#">Sustainable Green Practice in SMEs – An Examination of VBN Framework for Improving Productivity</a>	<a href="#">PDF</a> 651 - 656
Peter Jacob, Mathivannan Jaganathan, Khairol Anuar Ishak, Saw Chin Khor, Nurliyana Maludin, Adi Wira Mohd Zin, Suresh Nodesan	
<a href="#">Prediction Supply Modelling for High-Cost Housing in Malaysia</a>	<a href="#">PDF</a> 657 - 664
Fazilah Ramli, Rozlin Zainal, Maimunah Ali	
<a href="#">An Analysis of Sustainability Implementation in Malaysian Private Finance Initiative (PFI) Projects: Issues, Challenges and Way Forward</a>	<a href="#">PDF</a> 665 - 670
Kharizam Ismail, Shamsida Saidan Khaderi, Syed Ahamd Qusoiri Syed Abdul Karim, Yuhainis Abdul Talib, Nor Aini Salleh	
<a href="#">The Role of R&amp;D Expenditure on Job Creation in the Malaysian Manufacturing Sector</a>	<a href="#">PDF</a> 671 - 676
Sabri Nayan, Siti Nur Fatimah Samsuddin, Aznita Samsi, Norehan Abdullah, Selamah Maamor, Hussin Abdullah	
<a href="#">The Determinant Factors of Supply Chain Management on Purchase Intention of an International Branded Apparel Status Quo</a>	<a href="#">PDF</a> 677 - 684
Rozita Naina Mohamed, Bahtiar Mohamad, Halimahton Borhan, Idris Osman, Surianor Kamaralzaman	
<a href="#">Causal Loop Analysis and Improvement Areas of AS 9100 Aerospace Quality Management System Implementation in Turkish Aerospace and Defence Industry Supply Chain</a>	<a href="#">PDF</a> 685 - 705
Muhtesem Gökhan Yılmaz, Berk Ayvaz	
<a href="#">An Integrated Collaboration Framework for Sustainable Sugar Supply Chains</a>	<a href="#">PDF</a> 706 - 717
Wike Agustin Prima Dania, Ke Xing, Yousef Amer	
<a href="#">Computation of Reliability, Average Reliability, and Maintainability of Service Demand Fulfilment Dynamically using System Dynamics</a>	<a href="#">PDF</a> 718 - 729
Mudjahidin Mudjahidin, Joko Lianto Buliali, Muhammad Nur Yuniarto, Erma Suryani	
<a href="#">Backhaul Utilization Trend and Trucks Turnaround Time (TAT) in Indian Logistics System</a>	<a href="#">PDF</a> 730 - 734
Mohamed Jasim K, Jayshree Suresh, Reena Murray	
<a href="#">Critical Success Factors and Processed Fruit Export Supply Chain Improvement of Thai SME to India</a>	<a href="#">PDF</a> 735 - 740
Tanaporn Janapiraganit, Chatrudee Jongsureeyapart	
<a href="#">Application of the Logit Demand Function to Determine the Retail Price and Inventory Replenishment Policy in a Serial Supply Chain</a>	<a href="#">PDF</a> 741 - 759
Lisha Duan, Jose A Ventura, Bárbara B Venegas-Quintrileo	
<a href="#">Analysis and Prediction of Supply and Demand Risks - Case of the Moroccan Company</a>	<a href="#">PDF</a> 760 - 767
Mariam El Hiri, Abdelali En-Nadi, Anas Chafi	
<a href="#">An Integrated Model for Lot Sizing with Supplier Selection Considering Quantity</a>	<a href="#">PDF</a>

<a href="#">Discounts, Expiry Dates, and Budget Availability</a> Teguh Ersada Natail Sitepu, Andi Cakravastia	768 - 779
<a href="#">Capabilities and Operational Performance: Case Study in Automotive Supply Chain</a> Alexandre Tadeu Simon, Eliciane Maria Silva, Renan Stenico Campos, Eliacy Cavalcanti LÃ©lis	<a href="#">PDF</a> 780 - 789
<a href="#">The Decision of Farmers do Fermentation to Increase the Quality of Cocoa Beans in Central Sulawesi Indonesia</a> Effendy Effendy, Made Antara, Rustam Abdul Rauf, Dance Tangkesalu, Christoporos Christoporos, M. Fardhal Pratama, Muhammad Basir-Cyio, Mahfudz Mahfudz, Muhardi Muhardi	<a href="#">PDF</a> 790 - 794
<a href="#">Development of Supply Chain Quality Management in Peruvian Blueberry Companies: A Case Study in CaÃ±ete, Peru</a> Edgar D. Ramos, Jean Pierre Yanayaco, Tamy Hinostroza, Ron Mesia	<a href="#">PDF</a> 795 - 808
<a href="#">The Influence of Supply Chain Practices and Performance Measurement Practices towards Firm Performance</a> Frank Augustine Elisha Mkumbo, Abdul Razak Ibrahim, Abdul Latif Salleh, Veera Pandiyan Kaliani Sundram, Atikah Shamsul Bahrin	<a href="#">PDF</a> 809 - 819
<a href="#">The Impact of Total Quality Management in the Supply Chain of High Schools on Performance: A Proposed Framework</a> Sami Abdullah Kadhim, Md. Fauzi Bin Ahmed	<a href="#">PDF</a> 820 - 826
<a href="#">The Influences of Entrepreneurs Islamic Practices on Halal Supply Chain Integrity: A Study in Herbal Based Food Industry</a> Salini Devi Rajendran, Nitty Hirawaty Kamarulzaman	<a href="#">PDF</a> 827 - 832
<a href="#">Framework and Development of a Collaborative Supply Chain Model</a> Mouad Ben-faress, Abdelmajid Elouadi, Driss Gretete	<a href="#">PDF</a> 833 - 837
<a href="#">Sustainability Performance of the Retail Business and Supply Chain Collaboration-UK Perspective: A Literature Review</a> Abu Hasanat Md Monzurul Islam Bhuyan, Samuel Boafu Afranie, Md. Mamun Habib	<a href="#">PDF</a> 838 - 845
<a href="#">The Impact of Low-Cost Carriers on inbound Tourism of Thailand</a> Po-Lin Lai, Hyunmi Jang, Chenming Xu, Shi Xin	<a href="#">PDF</a> 846 - 853
<a href="#">The Role of Corporate Governance in Creating a Capable Supply Chain: A Case of Indonesian Tin Industry</a> Petcharaporn Chatchawanchanchanakij, Chanapong Arpornpisal, Kittisak Jernsittiparsert	<a href="#">PDF</a> 854 - 864
<a href="#">Enhancing Accountability of Government-Linked Companies through Supply Chain Management Practices</a> Eley Suzana Kasim, Normah Omar, Jamaliah Said, Ibrahim Kamal Abdul Rahman	<a href="#">PDF</a> 865 - 876
<a href="#">Predictors of Environmental Performance: Mediating Role of Green Supply Chain Management Practices</a> Kittisak Jernsittiparsert, Parinya Siriattakul, Nuanluk Sangperm	<a href="#">PDF</a> 877 - 888
<a href="#">Effect of Internal Marketing on Internal Supply Chain Management through Mediation of Employees' Affective Commitment</a> Omer Ahmed Salmeen Bin Thabet, Hoyoung Lee, Nadeem Khalid	<a href="#">PDF</a> 889 - 901
<a href="#">Exploring the Link between Supply Chain Capability and Inter-Organizational Compatibility: Do Inter-Organizational Information Systems (IOIS) Integration Matter?</a> Syeliya Md Zaini, Oussama Saoula, Erlane K Ghani, Nasir Abdul Jalil, Mustafa Rashid Issa	<a href="#">PDF</a> 902 - 914
<a href="#">Examining the Mediating Role of Strategic Integration of Purchasing, And Advance Purchasing Practices in the Relationship between Purchasing Operational Performance and IT Investment in Purchasing</a> GholamReza Zandi, Dewan Md. Zahurul Islam, Nadeem Khalid	<a href="#">PDF</a> 915 - 926
<a href="#">Exploring the Nexus between the Environmental Investment, Environmental Performance, and the Proactive Environmental Strategy in a Supply Chain</a> Sulaiman Sajilan, Oussama Saoula, Mustafa Rashid Issa, Nasir Abdul Jalil	<a href="#">PDF</a> 927 - 940
<a href="#">Four-Step Entrepreneurial System Approach to Control Students Dropout from Secondary School in Indonesia and Supply Chain Performance</a> Agus Winarti	<a href="#">PDF</a> 941 - 951
<a href="#">Zakat Distribution and Macroeconomic Performance: Empirical Evidence of Indonesia</a> Muhtadi Ridwan, Laila M. Pimada, Nur asnawi	<a href="#">PDF</a> 952 - 957
<a href="#">Supply Chain Management Issue : Development Science Techno Park (STP) Through Small, Medium Enterprises (SMEs), Case Study of Puspipstek Serpong Indonesia</a> Fadoli Fadoli, SamÃ©un Jaja Raharja, Margo Purnomo, Lina Auliana	<a href="#">PDF</a> 958 - 965
<a href="#">Training, Research and Development, and Spillover Effects of Foreign Direct Investment: A Study on Labour Productivity in Malaysian Manufacturing Industry</a> Norhanishah Mohamad Yunus, Fazelina Sahul Hamid	<a href="#">PDF</a> 966 - 972
<a href="#">Consumers' Repurchase Intention towards Counterfeit Products</a> Kaiyethire Bupalan, Suzari Abdul Rahim, Aidi Ahmi, Nor Aida Abdul Rahman	<a href="#">PDF</a> 973 - 981
<a href="#">Investigation of Supplier Selection Criteria that Leads to Buyer-Supplier Long Term Relationship for Semiconductor Industry</a> Yogeswaran Vijayakumar, Suzari Abdul Rahim, Aidi Ahmi, Nor Aida Abdul Rahman	<a href="#">PDF</a> 982 - 993
<a href="#">Factors that Influence Customers' Intention to Visit Green Hotels in Malaysia</a> Kartini Muniandy, Suzari Abdul Rahim, Aidi Ahmi, Nor Aida Abdul Rahman	<a href="#">PDF</a> 994 - 1003



<a href="#">Socioeconomic Factors, Food Supply and Food Security among Communities at the Malaysia-Thailand Border: A Human Security Approach</a> Bakri Mat, Ku Nurasyiqin Ku Amir	<a href="#">PDF</a> 1004 - 1009
<a href="#">Relationship between Logistical Support Factors and Effective Contract Management in Royal Malaysian Navy</a> Muslim Diekola Akanmu, Ahmad Sarkawi Azizi, Mohamad Ghazali Hassan, Mustakim Melan	<a href="#">PDF</a> 1010 - 1017
<a href="#">Factors Influencing the Supply Chain of Muslimas Fashion (Hijabs) on Brand Loyalty</a> Rozita Naina Mohamed, Bahtiar Mohamad, Norzehan Abu Bakar	<a href="#">PDF</a> 1018 - 1024
<a href="#">Linkage between Supply Chain Operation Reference model and Learning Style Diversity- An Empirical Study in Indian Logistics Industry</a> Pooja Tiwari, Dr. Shalini Srivastava, Dr. Vikas Garg	<a href="#">PDF</a> 1025 - 1032
<a href="#">The Study to Analyze the Impact of Green Supply Chain Management in India</a> Shalini Srivastava, Vikas Garg, Pooja Tiwari	<a href="#">PDF</a> 1033 - 1038
<a href="#">The Study of Goods and Services Tax on Multinational Companies in India</a> Arun Gautam, Gaurav Lodha, M.L. Vadera Vadera	<a href="#">PDF</a> 1039 - 1044
<a href="#">Improving Traditional Market Sustainability in The Industrial 4.0 Era through Impulsive Buying Strategy: A Case in East Java, Indonesia</a> Wiwik Handayani, Endang Iryanti, Muchlisiniyati Safeyah, Susi Hardjanti	<a href="#">PDF</a> 1045 - 1056
<a href="#">Customer and Stakeholder Perspective using Analytical Hierarchy Process Method for Evaluation Performance of Higher Education</a> Satria Abadi, Setyawan Widyarto, Nur Syufizah Ahmad Shukor	<a href="#">PDF</a> 1057 - 1064
<a href="#">Corporate Image and Reputation in the Shipping Industry in Four Asian Countries: Republic of Korea, China, Japan, and Thailand</a> Hyunmi Jang, Ho Park, Sang Youl Kim, Pairach Piboonrungrong	<a href="#">PDF</a> 1065 - 1078
<a href="#">Presenting a Location-Routing Problem for Multi-vehicle Hazardous Materials Transport, Considering the Cost Dependent to the Amount of Materials Loaded</a> Mohammad Jamali	<a href="#">PDF</a> 1079 - 1100
<a href="#">An examination of Post Implementation Success determinants of Enterprise Resource Planning: Insights from industrial Sector of Pakistan</a> Atif Gill, Dr. Arfan Shahzad, Dr. Subramaniam Sri Ramalu	<a href="#">PDF</a> 1101 - 1106

Copyright © ExcelingTech Publishers, London, UK





# International Journal of Supply Chain Management

ISSN: 2050-7399 (Online), 2051-3771 (Print)

HOME ABOUT LOGIN REGISTER SEARCH CURRENT ARCHIVES  
ANNOUNCEMENTS EDITORIAL BOARD ONLINE SUBMISSION PUBLICATION ETHICS

Home > About the Journal > **Editorial Policies**

## Editorial Policies

- [Focus and Scope](#)
- [Section Policies](#)
- [Peer Review Process](#)
- [Open Access Policy](#)
- [Archiving](#)
- [Editorial Board](#)
- [Indexing](#)
- [Publications Ethics](#)

### Focus and Scope

IJSCM's distinctive emphasis is on the management of operations and supply chains. Accordingly, the aim of IJSCM is to enhance the field of SCM and develop generalizable theory, typically through the identification, analysis, and theorization of real SCM/OM problems. IJSCM seeks research that can help the audience develop a better conceptual base for understanding SCM/OM. The focus of articles for IJSCM should be on the managerial situation or the theory being studied rather than the solution techniques being developed or used. Highest priority is thus given to studies that are anchored in the real world and build, extend or test generalizable theories or frameworks of managerial significance. Most often such studies result from identifying an actual, new managerial situation for which existing theory is inadequate, thereby resulting in an addition to theory or testing multiple theories against actual managerial situations to determine their relevance.

General topics covered by the journal, while not exclusive, include the following:

- Supply Chain processes in manufacturing and service organizations
- Upstream supply management
- Downstream demand management
- Supply Chain strategy and policy
- Technology management for supply chain
  - Supply chain planning, scheduling and control
- Human resource management for supply chains
- Supply Chain Performance measurement and productivity
- Purchasing/sourcing management
- Materials and inventory management
- Logistics, transportation, distribution, and materials handling
- International and comparative supply chain operations
- Operations and information management
- Sustainable supply chain operations
- Global supply chain
- Supply chain planning and operations
- Regulatory and environmental issues in supply chain operations

### Section Policies

#### Articles

- ☒ Open Submissions    ☒ Indexed    ☒ Peer Reviewed

### Peer Review Process

All manuscripts will be subject to a well-established, fair, unbiased peer review and refereeing procedure, and are considered on the basis of their significance, novelty and usefulness to the Journals readership. The review output will be either accept or reject. A paper once rejected will not be considered again for review. The review process may take approximately 4-6 months to be completed. For accepted paper, should authors be requested by the editor to revise the text and minor changes, the revised version should be submitted within 15 days

#### USER

Username   
 Password   
☐ Remember me

#### JOURNAL CONTENT

Search   
 Search Scope

#### Browse

- [By Issue](#)
- [By Author](#)
- [By Title](#)
- [Other Journals](#)

#### FONT SIZE

#### INFORMATION

- [For Readers](#)
- [For Authors](#)
- [For Librarians](#)



## Open Access Policy

This journal provides immediate open access to its content on the principle that making research freely available to the public supports a greater global exchange of knowledge.

## Archiving

This journal utilizes the LOCKSS system to create a distributed archiving system among participating libraries and permits those libraries to create permanent archives of the journal for purposes of preservation and restoration. More...

## Editorial Board

### **Editor-in-Chief**

**Prof. Dr. Md. Mamun Habib,**

School of Business and Entrepreneurship, Independent University, Bangladesh

Visiting Scientist, University of Texas - Arlington (UTA), USA

**E-mail:** [mamunhabib@gmail.com](mailto:mamunhabib@gmail.com), [mamunhabib@iub.edu.bd](mailto:mamunhabib@iub.edu.bd), [mohammad.habib@uta.edu](mailto:mohammad.habib@uta.edu),

### **Editorial Board Members**

- **Prof. Dr. Hui-Ming Wee**, Dept. of Industrial & Systems Engg., Chung Yuan Christian University, Taiwan
- **Prof. Dr. R.P Mohanty**, Ex-Vice-Chancellor, Siksha O Anusandhan University, India
- **Prof. Dr. Erick C. Jones**, Dept. of Industrial & Manufacturing Systems Engineering, University of Texas, Arlington, USA
- **Prof. Dr. Abu Bakar Abdul Hamid**, Dept. of Marketing and Supply Chain Management, PUTRA Business School, Universiti Putra Malaysia
- **Prof. Prem Kumar Rajagopal**, Vice-Chancellor, Malaysia University of Science & Technology, Malaysia
- **Dr. Ayon Chakraborty**, Federation University, Ballarat, Victoria, Australia
- **Prof. Dr. Eugene Kozlovski**, University of Wales, Trinity Saint David, London, UK
- **Prof. Dr. Edgar Ramos**, Industrial Engineering Program, Universidad Peruana de Ciencias Aplicadas, Lima, Peru
- **Prof. Dr. Tzong-Ru Lee**, Dept. of Marketing, National Chung Hsing University, Taiwan
- **Dr. Pandiyan Kaliani Sundram**, Department of Technology and Supply Chain Management Studies, Universiti Teknologi MARA, Selangor, Malaysia
- **Dr. Nachiappan Subramanian**, Business School, University of Nottingham, China
- **Dr. Teh Pei Lee**, School of Business, Monash University, Malaysia
- **Dr. Lu Qing**, Logistics Institute - Asia Pacific, National University of Singapore, Singapore
- **Prof. Dr. Zeki Ayag**, Dept. of Industrial Engineering, Kadir Has University, Turkey
- **Assoc. Prof. Piyush Singhal**, GLA University, Mathura, India
- **Dr. Kwang-Seok Choi**, National Institute of Occupational Safety and Health, Japan
- **Dr. I Gede Agus Widyadana**, Dept. of Industrial Engineering, Petra Christian University, Indonesia
- **Dr. Mohd Nasrun Mohd Nawi**, School of Technology Management and Logistics, Universiti Utara Malaysia, Malaysia

## Indexing

### **Indexing**

- Google Scholar
- DOAJ
- EBSCO
- Scirus
- GetCited
- Scribd
- CiteSeerX
- Newjour

And also under process in many other International Databases

## Publications Ethics

### **Publication Ethics and Publication Malpractice Statement**

*Our publication ethics and publication malpractice statement is mainly based on the Code of Conduct and Best-Practice Guidelines for Journal Editors (Committee on Publication Ethics, 2011).*

### **I. Responsibilities of Editorial Board**

#### **1.1 Publication Decisions**

The editorial board is responsible for deciding which of the papers submitted to the journal will be published. The Editor-in-Chief's decision to accept or reject a paper for publication is based on its importance, originality, clarity, and its relevance to the scope of the journal.

### **1.2 Fair Play**

The Editorial Board and the reviewers evaluate manuscripts for their intellectual content without regard to the author's race, ethnicity, gender, sexual orientation, religious beliefs, citizenship, or political ideology.

### **1.3 Confidentiality**

The Editorial Board must ensure that all material submitted to the journal remains confidential while under review. The editorial board and the editorial staff must not disclose any information about a submitted manuscript to anyone other than the corresponding author, reviewers, potential reviewers, other editorial advisers, and the publisher, as appropriate.

### **1.4 Disclosure and Conflicts of Interest**

Unpublished materials disclosed in a submitted paper will not be used by the editor or the members of the editorial board for their own research purposes without the author's explicit written consent.

### **1.5 Journal Self Citation**

An editor should never conduct any practice that obliges authors to cite his or her journal either as an implied or explicit condition of acceptance for publication. Any recommendation regarding articles to be cited in a paper should be made on the basis of direct relevance to the author's article, with the objective of improving the final published research. Editors should direct authors to relevant literature as part of the peer review process; however this should never extend to blanket instructions to cite individual journals.

### **1.6 Involvement and Cooperation in Investigations**

An editor should take reasonably responsive measures when ethical complaints have been presented concerning a submitted manuscript or published paper, in conjunction with the publisher (or society). Such measures will generally include contacting the author of the manuscript or paper and giving due consideration of the respective complaint or claims made, but may also include further communications to the relevant institutions and research bodies, and if the complaint is upheld, the publication of a correction, retraction, expression of concern, or other note, as may be relevant. Every reported act of unethical publishing behavior must be looked into, even if it is discovered years after publication.

### **1.7 Publication Decisions**

The Editor-in-Chief of the journal is responsible for deciding which of the submitted articles should be published. The Editor-in-Chief may be guided by the policies of the journal's Editorial Board and constrained by such legal requirements as shall then be in force regarding libel, copyright infringement and plagiarism. The Editor-in-Chief may confer with other editors or reviewers in making this decision.

## **II. Responsibilities of Reviewers**

### **2.1 Contribution to Editorial Decisions**

The peer-reviewing process assists the editor and the editorial board in making editorial decisions and may also serve the author in improving the paper.

### **2.2 Promptness**

Any selected referee who feels unqualified to review the research reported in a manuscript or knows that its prompt review will be impossible should notify the editor and withdraw from the review process.

### **2.3 Confidentiality**

Any manuscripts received for review must be treated as confidential documents. They must not be disclosed to or discussed with others except as authorized by the editor.

### **2.4 Standards of Objectivity**

Reviews should be conducted objectively. Personal criticism of the author is inappropriate. Referees should express their views clearly with supporting arguments.

### **2.5 Acknowledgment of Sources**

Reviewers should identify cases in which relevant published work referred to in the paper has not been cited in the reference section. They should point out whether observations or arguments derived from other publications are accompanied by the respective source. Reviewers will notify the editor of any substantial similarity or overlap between the manuscript under consideration and any other published paper of which they have personal knowledge.

### **2.6 Disclosure and Conflict of Interest**



Privileged information or ideas obtained through peer review must be kept confidential and not used for personal advantage. Reviewers should not consider manuscripts in which they have conflicts of interest resulting from competitive, collaborative, or other relationships or connections with any of the authors, companies, or institutions associated with the papers.

### **III. Duties of Authors**

#### **3.1 Reporting Standards**

Authors of original research reports should present an accurate account of the work performed as well as an objective discussion of its significance. Underlying data should be represented accurately in the paper. A paper should contain sufficient detail and references to permit others to replicate the work. Fraudulent or knowingly inaccurate statements constitute unethical behavior and are unacceptable.

#### **3.2 Data Access and Retention**

Authors could be asked to provide the raw data of their study together with the paper for editorial review and should be prepared to make the data publicly available if practicable. In any event, authors should ensure accessibility of such data to other competent professionals for at least ten years after publication (preferably via an institutional or subject-based data repository or other data center), provided that the confidentiality of the participants can be protected and legal rights concerning proprietary data do not preclude their release.

#### **3.3 Originality, Plagiarism**

Authors will submit only entirely original works, and will appropriately cite or quote the work and/or words of others. Publications that have been influential in determining the nature of the reported work should also be cited. Plagiarism takes many forms, from "passing off" another's paper as the author's own paper, to copying or paraphrasing substantial parts of another's paper (without attribution), to claiming results from research conducted by others. Plagiarism in all its forms constitutes unethical publishing behavior and is unacceptable.

#### **3.4 Multiple, Redundant or Concurrent Publication**

In general, papers describing essentially the same research should not be published in more than one journal. Submitting the same paper to more than one journal constitutes unethical publishing behavior and is unacceptable. Manuscripts which have been published as copyrighted material elsewhere cannot be submitted. In addition, manuscripts under review by the journal should not be resubmitted to copyrighted publications.

#### **3.5 Acknowledgement of Sources**

Proper acknowledgment of the work of others must always be given. Authors should cite publications that have been influential in determining the nature of the reported work. Information obtained privately, as in conversation, correspondence, or discussion with third parties, must not be used or reported without explicit, written permission from the source. Information obtained in the course of confidential services, such as refereeing manuscripts or grant applications, must not be used without the explicit written permission of the author of the work involved in these services.

#### **3.6 Authorship of the Paper**

Authorship should be limited to those who have made a significant contribution to the conception, design, execution, or interpretation of the reported study. All those who have made significant contributions should be listed as co-authors.

The corresponding author ensures that all contributing co-authors and no uninvolved persons are included in the author list. The corresponding author will also verify that all co-authors have approved the final version of the paper and have agreed to its submission for publication.

#### **3.7 Disclosure and Conflicts of Interest**

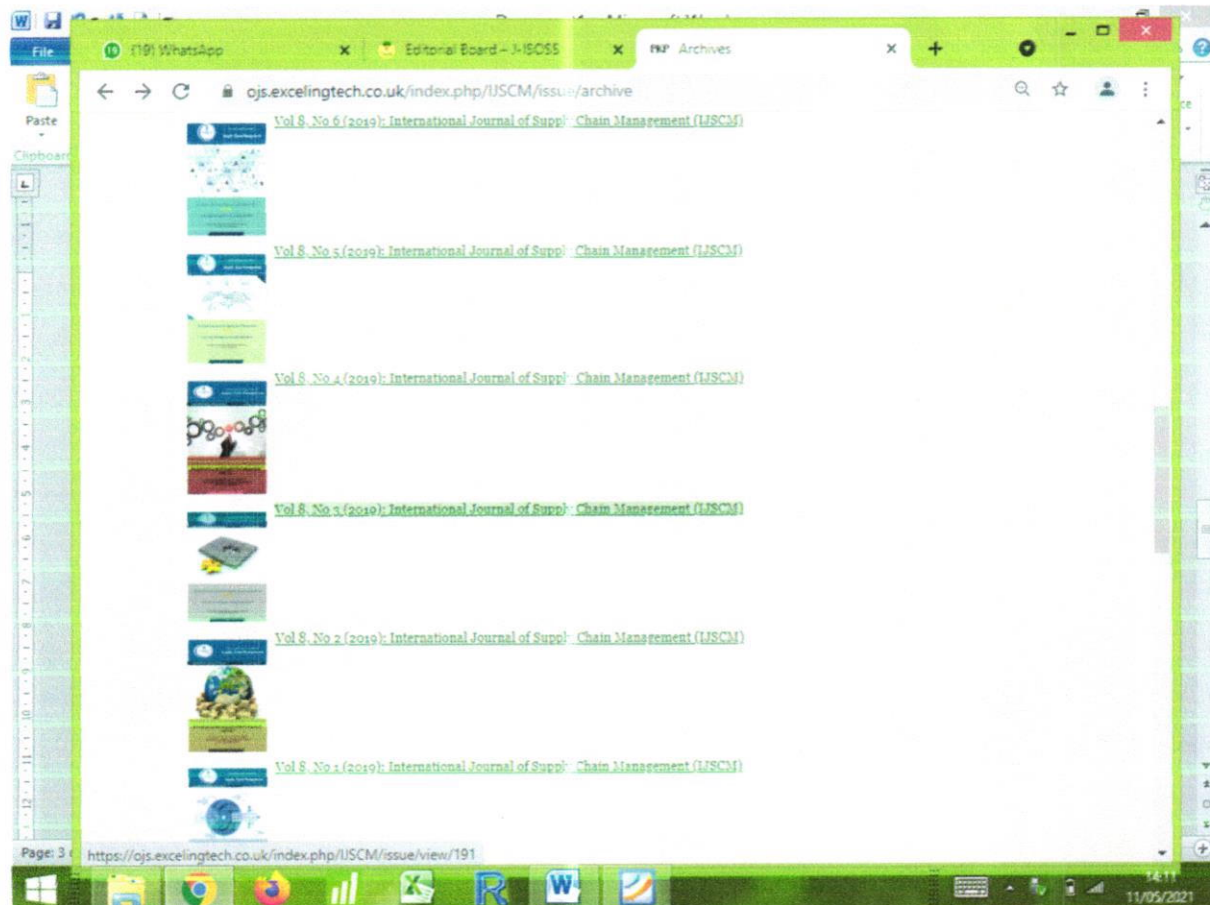
All authors should include a statement disclosing any financial or other substantive conflicts of interest that may be construed to influence the results or interpretation of their manuscript. All sources of financial support for the project should be disclosed.

#### **3.8 Fundamental Errors in Published Works**

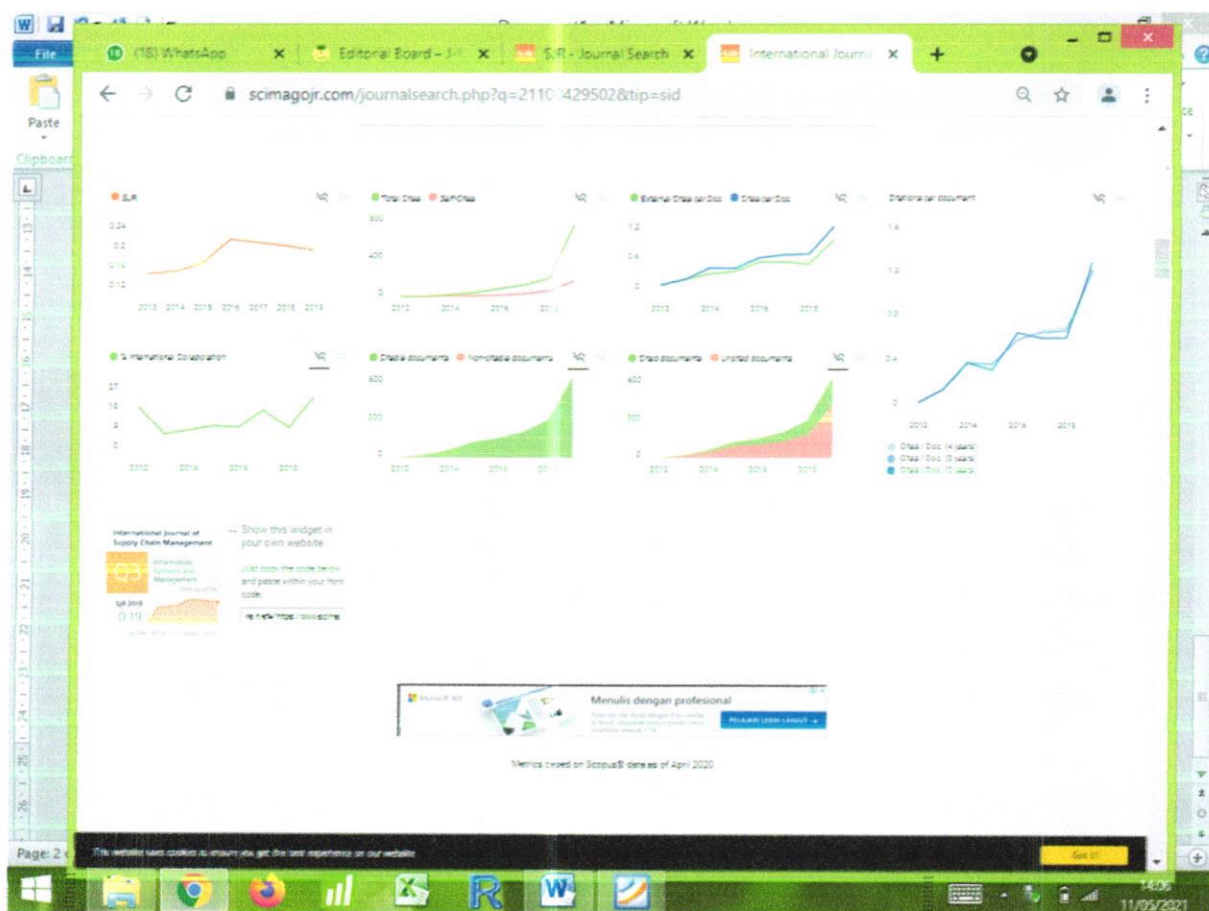
When an author discovers a significant error or inaccuracy in his/her own published work, it is the author's obligation to promptly notify the journal editor or publisher and to cooperate with the editor to retract or correct the paper in form of an erratum.

### **References**

Committee on Publication Ethics (COPE). (2011, March 7). *Code of Conduct and Best-Practice Guidelines for Journal Editors*. Retrieved from [http://publicationethics.org/files/Code\\_of\\_conduct\\_for\\_journal\\_editors\\_Mar11.pdf](http://publicationethics.org/files/Code_of_conduct_for_journal_editors_Mar11.pdf)







scimagojr.com/journalsearch.php?q=21100429502&tip=sid

**SJR** Scimago Journal & Country Rank

Home Journal Rankings Country Rankings Via Tools Help About Us

**3DEXPERIENCE<sup>®</sup> Forum APAC 2021**  
Take this opportunity to join and experience live series of our solutions in action

**International Journal of Supply Chain Management**

COUNTRY	SUBJECT AREA AND CATEGORY	PUBLISHER	H-INDEX
United Kingdom	Business, Management and Accounting - Management Information Systems Computer Science - Information Systems Decision Sciences - Information Systems and Management	Emerald Group Publishing	<b>13</b>

PUBLICATION TYPE	ISSN	COVERAGE
Journals	2057-2999, 2057-2771	2012-2020

SCOPE  
Information not localized

Ready This website uses cookies to ensure you get the best experience on our website

scimagojr.com/journalsearch.php?q=21100429502&tip=sid

**Call For Papers Elsevier Q4**  
Collaboration protocols are invited - provide a single platform for world-class research

**Impact Factor and Indexed**  
JISC is a peer-reviewed and indexed journal

**Quintiles**

Quintile	2013	2014	2015	2016	2017	2018	2019
Information Systems	High	High	High	High	High	High	High
Information Systems and Management	High	High	High	High	High	High	High
Management Information Systems	High	High	High	High	High	High	High

**Impact Factor and Indexed**  
JISC is a peer-reviewed and indexed journal

Page: 1 This website uses cookies to ensure you get the best experience on our website



# Determining Sustainable Rice Farming through Supply Chain Risk Management: A Case Study in Central Java, Indonesia

Agung Prabowo<sup>1</sup>, Budi Pratikno<sup>1</sup>, Jumadil Saputra<sup>\*2</sup>, Sukono<sup>3</sup>

<sup>1</sup>*Department of Mathematics, Faculty of Mathematics and Natural Sciences, University of Jenderal Soedirman, Indonesia*

<sup>2</sup>*School of Social and Economic Development, University Malaysia Terengganu, 21030 Kuala Nerus, Terengganu, Malaysia*

<sup>3</sup>*Department of Mathematics, Faculty of Mathematics and Natural Sciences, University of Padjadjaran, Indonesia*

**Abstract-** The government through the Department of Agriculture has been cooperating with Indonesian Insurance Services or PT. AsuransiJasa Indonesia (PT. Jasindo), to implement an insurance program for farmers throughout the country known as rice farming insurance (RFI). The supply chain efficiency and risk management may be two causal factors to uplift the economic conditions of the agricultural communities. The premium rate for 1 hectare of land designated at 3% of the maximum benefit value of IDR 6,000,000. Consequently, the premium received by PT. Jasindo for each hectare is IDR 180,000 of which the Government subsidy pays IDR 144,000, and farmers will pay the remaining IDR 36,000 of the premium. This research will determine the actuarially fair premium rate, both theoretically and using the data of rice harvest yield in Central Java Province from 1990-2017. The calculation, employing the rice harvest yield data, results in the premium rate. The farmers must pay for each hectare from IDR 56,000 (minimum) to IDR 161,600 (maximum) with an average value of IDR 110,750. Meanwhile, the standard deviation principle used, the premium results between IDR 78,151 and IDR 143,349. The rate of IDR 208,458 per hectare has theoretically generated if there are 100 participants per regency (city) or in size of 3,500 hectares throughout Central Java Province and IDR 182,846 per hectare if there are 10,000 participants or about 350,000 hectares. These values are not much different from RFI premium currently applied to farmers throughout Indonesia.

**Keywords-** Agricultural, supply chain management, Risk management, Benefit, Farmer, Insurance, Premium.

## 1. Introduction

Supply chain management has become a major part of companies/firms management systems due the numerous benefit associated to supply chains in today's business environment. However, although

such supply chain design changes and supply chain management initiatives have great potential to make operations leaner and more efficient in a stable environment, they simultaneously increase the fragility and vulnerability of supply chains to disruptions. Most of the rice farmers in Java and Bali Islands are smallholders with averagely 0.3 hectares of land [1] so that any slightest harvest failure will significantly impact on them. Such a loss significantly influences some farmers' survivability. One of the solutions to overcome loss for harvest failure is to implement agricultural insurance. Before this agricultural insurance is applied, trials need to be performed first. These trials aim at preparing appropriate agricultural insurance concept. An examination of agricultural insurance implementation has been conducted in the planting season from October 2012 to March 2013 in West Java, East Java and South Sumatera provinces. The trial is held on respectively 1000 hectares of the farm by involving PT. Jasindo to be the insurer. PT can only perform the prosecution. Jasindo on 623.12 hectares of rice farm, which is still far from the expected 3000 hectares for the three provinces. The premium rate applied in the trial is IDR 180,000 per hectare (farmers pay only IDR 36,000, and the Government pays the remaining) with a total maximum benefit of IDR 6,000,000. With the total size of land on which trial has conducted of 623.12 hectares, the total premium received by PT. Jasindo is IDR 112,161,600. The premium received can only cover 18 claims for compensation, each of which is 1 hectare in size and receives maximum compensation (benefit) of IDR 6,000,000. Thus, with the premium it has received, it is certain that PT. Jasindo will suffer a loss since it is quite

impossible that harvest failure will occur only on 18 hectares out of 623.12 hectares. Harvest failure occurs on 87.28 hectares of land. Consequently, PT. Jasindo must pay the claims for  $87.28 \times \text{IDR } 6,000,000 = \text{IDR } 523,680,000$  or 467% of the premium value it has received. In this trial, PT. Jasindo suffers loss for  $\text{IDR } 523,680,000 - \text{IDR } 112,161,000 = \text{IDR } 411,519,000$ .

Even if it suffers loss, the percentage of harvest failure is only  $(87.28/623.12) \times 100\% = 14\%$ . [1], estimates that from 1989-1991, the rate of rice harvest failure caused by flood, dry and pest is respectively 0.21%, 0.50% and 0.06 % of total planting area. The percentage of harvest failure in this trial is deemed as within reasonable limit; thus the agricultural insurance may be implemented. With a premium of IDR 180,000 and benefit (coverage) of IDR 6,000,000, then 34 farmers are needed to be participants. From the 34 participants, the collected premium will be  $34 \times \text{IDR } 180,000 = \text{IDR } 6,120,000$ , and there will be a difference of IDR 120,000 from the coverage value of IDR 6,000,000. It means that from 34 participants, only one farmer may suffer harvest failure; thus the harvest failure probability is  $1/34 = 0.02941 = 0.03$ . An analogue calculation gives a number that from 100 participants, only three farmers may suffer harvest failure. Thus the harvest failure probability is 3 hectares out of 100 hectares. These are a break-even, in which the company neither gain profit nor suffer loss. The number of 34 participants has surpassed the number 30 as required in the law of large numbers. Thus the premium calculation may be based on a normally distributed harvest yield data.

[2] have discussed normal curve method. This method assumes that harvest yield distribution is normal [3,4,5]. Furthermore, some authors [4], [6,7,8]—studied the empirical natured method that based on the relationship between the average of observed loss and the coverage value. Meanwhile, there are several authors, namely [9,10, 11, 7] used the parametric and non-parametric method in calculating agricultural insurance premium. In the parametric approach, a farming harvest yield assumption follows specific distribution such as usual, beta or gamma, while non-parametric method used histogram and kernel estimator to estimate the distribution of the farming harvest yield. The rice farming insurance (RFI) premium rate for Central Java province will be determined in this research. The RFI premium rate is theoretically calculated using the short-term individual risk

theory and the trial yield data. Also, the premium rate will be calculated using the data of rice harvest yield in Central Java from 1990-2017 (Central Bureau of Statistics), which fulfil normal distribution hypothesis. The RFI premium calculation result may be taken as supporting calculation standard or baseline that the currently designated premium rate of RFI is reasonable. However, if the premium calculation result is much different from current premium calculation, then the results of this research may become material for review or revision in determining actuarially and practically fairer RFI premium rate.

## 2. Material and Methods

The premium rate is normally determined in two ways, theoretically and application on harvest yield data. This study employs secondary data and its analysis through a quantitative approach. Here, the data are annual rice harvest yield from 1990-2017 in 35 regencies/cities in Central Java Province, and 6 of which are central cities. The premium rate is theoretically calculated using short-term individual risk theory [12] to obtain an actuarially fair premium rate. The practically fair premium rate is computed using normally distributed harvest yield data. For example,  $S$  it represents the total aggregate claims the company must pay to participants with harvest failure. Following [12,13], the RFI premium rate is calculated using an expectation value principle,

$$P = (1 + \theta) \cdot E[S] \quad (1)$$

Whereas,  $\theta$  represented as relative security loading. The  $\theta$  is then determined using the equation (1)

$$P_r(S \leq (1 + \theta) \cdot E[S]) = 0.95$$

And then it is solved using the law of large numbers approach [12]:

$$P_r\left(\frac{S - E[S]}{\sqrt{\text{Var}(S)}} \leq \frac{\theta \cdot E[S]}{\sqrt{\text{Var}(S)}}\right) = 0.95 = P_r(Z \leq 1.645) \quad (2)$$

From (equation 2), we then obtained

$$\theta = 1.645 \cdot \frac{\sqrt{\text{Var}(S)}}{E[S]} \quad (3)$$

Expectation and variance of total aggregate claim  $S$  are calculated using the equations (4) and (5):



$$E[S] = \sum_{j=1}^n E[X_j] = \sum_{k=1}^{35} n_k \cdot b_k \cdot q_k$$

(4)

$$Var(S) = \sum_{j=1}^n Var(X_j) = \sum_{k=1}^{35} n_k \cdot b_k^2 \cdot q_k \cdot (1 - q_k)$$

(5)

The rice harvest yield data has given in quintal unit per hectare, taken from Central Java in number from 1991-2017. The normality test of the harvest yield data tested for data normality using Kolmogorov-Smirnov test [14,15]. When the harvest yield data follows the normality assumption, then the RFI premium rate for all regencies/cities in Central Java could be calculated using three formulas established above. After that, a single and equal RFI premium rate for Central Java can be determined using the mean method. The normality test of rice harvest yield data in 35 regencies and cities in Central Java is tested using the Kolmogorov-Smirnov test. In this test, the null hypothesis is the rice harvest yield of each regency/city in Central Java Province are normally distributed. Note that the hypothesis test is a two-sided test. Here, the null hypothesis is accepted when the Kolmogorov-Smirnov value higher than Kolmogorov-Smirnov table  $D_{\alpha,n}$ . Following [2], it assumed that agricultural harvest yield normally distributed with parameter  $\mu$  and  $\sigma^2$ . If the variation coefficient is equal to 0.25 or  $\sigma = 0.25\mu$ , then the insurance premium rate for the scope of  $\alpha \times 100\%$  is

$$P_1 = \Phi\left(\frac{\alpha\mu - \mu}{0.25\mu}\right) \cdot (\alpha\mu - \mu) + \phi\left(\frac{\alpha\mu - \mu}{0.25\mu}\right) \cdot 0.25\mu$$

(6)

Since  $\sigma = 0.25\mu$  equation (6) shall become

$$P_1 = (\mu(\alpha - 1)) \cdot \Phi\left(\frac{\mu(\alpha - 1)}{\sigma}\right) + \sigma \cdot \phi\left(\frac{\mu(\alpha - 1)}{\sigma}\right)$$

(7)

With  $\Phi(z)$  is the cumulative distribution function of which values viewed in Standard Normal Table, and  $\phi(z) = \frac{1}{\sqrt{2\pi}} e^{-\frac{1}{2}z^2}$  is the standard normal distribution probability density function. The estimated premium is calculated using the average

and standard deviation of a sample. Thus equation (7) shall become

$$P_1 = (\bar{x}(\alpha - 1)) \cdot \Phi\left(\frac{\bar{x}(\alpha - 1)}{s}\right) + s \cdot \phi\left(\frac{\bar{x}(\alpha - 1)}{s}\right); \text{ for } 0 < \alpha \leq 1.$$

(8)

Note that one of the authors [16] have proposed a formula of actuarially fair AFTP premium rate as follows

$$P_2 = 6 \cdot \Phi\left(\frac{-0.75\mu}{\sigma}\right) - 8 \frac{\sigma}{\mu} \left[ \phi\left(\frac{-0.75\mu}{\sigma}\right) - \frac{1}{\sqrt{2\pi}} \right]$$

(9)

It is reasonable that all regencies/cities in Central Java uses single premium price with an equal rate. The simplest way to calculate the single premium is to take the average of all premium values [13]:

$$\bar{P} = \frac{1}{n} \sum_{i=1}^n P_i$$

(10)

With  $P_i$  is the premium price for each regency/city. The other single premium rate is computed using the standard deviation principle. The variance of premium rate is

$$\sigma_p^2 = \frac{1}{n-1} \sum_{i=1}^n (P_i - \bar{P})^2$$

(11)

For a 95% level of significance, the confidence interval of the premium rate is

$$(\bar{P} - 1.645 \cdot \sigma_p ; \bar{P} + 1.645 \cdot \sigma_p)$$

(12)

### 3. Result and Discussion

#### 3.1. The Determination of Rice Farming Insurance Premium Analysis on Trial

With RFI premium rate of IDR 180,000 and the coverage of IDR 6,000,000, the trial needs 34 farmers to be participants. Maximum 1 out of 34 participants may suffer harvest failure, or the harvest failure probability is  $1/34 = 0.03$ . For example, for each regency/city in Central Java, the

condition is assumed to be homogenous. Therefore, there will be  $k=1,2,\dots,35$  samples of regency/city and the harvest failure probability for each regency/city is  $q_k=0.03$  with a maximum benefit of  $b_k=6$  (IDR 6,000,000). For example,  $n_k=100$  participants taken for each regency/city, which  $k$  is some regency/city. Using the equations (4) and (5) for  $n=3,500$  farmers:

$$E[S] = \sum_{j=1}^{3500} E[X_j] = \sum_{k=1}^{35} n_k \cdot b_k \cdot q_k = 35 \cdot 100 \cdot 0.03 \cdot 6 = 630,$$

And,

$$\begin{aligned} Var(S) &= \sum_{j=1}^{3500} Var(X_j) = \sum_{k=1}^{35} n_k \cdot b_k^2 \cdot q_k \cdot (1 - q_k) \\ &= 35 \cdot 100 \cdot 1.0476 = 3,666.60 \end{aligned}$$

From equation (3), the  $\theta$  is 0.1581 and actuarially fair RFI premium rate is then calculated using the equation (1):

$$\begin{aligned} P &= (1 + \theta) \cdot E[S] = 1.1581 \cdot 630 \cdot \text{IDR } 1,000,000 \\ &= \text{IDR } 729,603,000. \end{aligned}$$

The RFI premium for each participant is  $\text{IDR } 729,603,000 / 3,500 = \text{IDR } 208,458$ . The calculation results are not much different from the RFI premium rate designated by the Government. Adding more participants may be made to achieve a premium close to the premium. For example, the number of participants for each regency/city is 10,000 farmers or totally  $n=350,000$  throughout Central Java, the expectation and variance of total aggregate claim  $S$  calculated using equations (4) and (5) are  $E[S]=63,000$ , and  $Var(S)=366,660$  the relative security loading is  $\theta=0.01581$  calculated using equation (3). The RFI premium rate calculated using the equation (1) is given as  $P=1.01581 \cdot 63,000 \cdot \text{IDR } 1,000,000 = \text{IDR } 63,996,030,000$

The RFI premium for each participant is  $\text{IDR } 63,996,030,000 / 350,000 = \text{IDR } 182,846$ . This number is quite close to the premium of IDR 180,000.

### 3.2. The Rice Farming Insurance Scheme

The program of RFI is a mandate from the law the Government must implement and is also a form of

Government's concern and alignments to the economically weak community. RFI program is mandated by article 37-39, Law No. 19 of 2013 concerning on The Farmer Protection and Empowerment [17]. The RFI has been implemented by the Government (Department of Agriculture) in cooperation with PT. Jasindo. The premium rate and benefit do not vary with the premium rate and benefit during the trial. One of the reasons why RFI is necessary is the results of Agricultural Census 2013 [15]. This Agricultural Census, conducted by [18], generates data that about 79.8% of households who work on food crops are those who work on a rice farm. [19,14] illustrates that RFI is limitedly designed to replace planting expenses incurred during a planting season, thus in case of 100% harvest failure, the farmers will neither gain profit nor suffer loss. The illustration also clarifies that the maximum RFI benefit of IDR 6,000,000 is a *fair* benefit value.

There are essential matters related to the scheme of RFI, i.e. (i) Every RFI participant may receive only a maximum of 2 hectares of land insured. (ii) The maximum coverage value and benefit participant may receive IDR 6,000,000 per hectare. (iii) The RFI insurance premium is established to be 3% of coverage value or IDR 180,000 per hectare, with 80% is subsidised/paid by the Government (IDR 144,000 per hectare), and the remaining 20% shall be paid by the farmer (IDR 36,000 per hectare). Thus, the farmer shall pay the premium only 0.6% of the coverage value. (iv) The insurable risks include drought, flood, and Plant Invading Organism (OPT) attack. (v) The insurance coverage period shall apply to one planting season. (vi) The farmer who harvests maximum only 25% of the planted area will receive full compensation (IDR 6,000,000). Other cases shall depend on the damage level and farming life [1].

### 3.3. The Rice Farming Insurance Premium Calculations

One of the principles used in determining the premium rate is the fairness principle, which is fair to both the insured farmers and the insurer [14]. The designated premium should neither be too high (which will overburden farmers) nor too low (which will cause the insurer's loss). Premium rate appropriate designation requires an actuarial method to calculate the premium rate. The parametric method assumes that harvest yield follows certain distribution such as normal, beta or gamma [21]. Harvest yield loss probability is the area below probability density function curve when harvest yield is lower than the insured return. From



Table 1, we see that the harvest yields for 32 regencies/cities in Central Java follow a normal distribution. However, the coefficient of variation values remain below 0.25; thus equation (8) is inapplicable. If all farms are insured ( $\alpha=1$ ), then

$$\Phi\left(\frac{\bar{x}}{s}(\alpha-1)\right) = \Phi(0) = 0.5 \quad \text{and}$$

$$\phi\left(\frac{\bar{x}}{s}(\alpha-1)\right) = \phi(0) = \frac{1}{\sqrt{2\pi}} = 0.399 \quad \text{hence equation}$$

(8) shall become

$$P_1 = 0.399 \cdot s$$

(13)

The computation results using the equation (13) is given in Table 1 Column 6. Here, we replace formula (9) with [16] is:

$$P_2 = 6 \cdot \Phi\left(\frac{-0.75\mu}{\sigma}\right) - \left(8 \frac{\sigma}{\mu} \left[\phi\left(\frac{-0.75\mu}{\sigma}\right) - \frac{1}{\sqrt{2\pi}}\right] \times \frac{1}{2}\right)$$

The premium estimation is calculated using the average and standard deviation of the sample. Since the estimated population variance  $\hat{\sigma}^2$  is not biased, then

$$P_2 = 6 \cdot \Phi\left(\frac{-0.75 \cdot \bar{x}}{s}\right) - 4 \frac{s}{\bar{x}} \left[\phi\left(\frac{-0.75 \bar{x}}{s}\right) - \frac{1}{\sqrt{2\pi}}\right]$$

(14)

The numbers in Table 1 column 3 are the average yield from 1991-2017 for all districts/cities in Central Java. If  $x_i$  stating the harvest yield for the year, then the average yield is obtained by the formula  $\bar{x} = \frac{1}{27} \sum_{i=1}^{27} x_i$ . The numbers in Table 1

column 4 state the standard deviation of harvest yield from 1991-2017 for all districts/cities in Central Java. These numbers are obtained using a

formula  $s = \sqrt{\frac{1}{26} \sum_{i=1}^{27} (x_i - \bar{x})^2}$ . The quotient between

the standard deviation and the average is called the coefficient of variance and given in Table 1 column 5. Table 1 Column 3, 4 and five are obtained with the help of SPSS. The numbers in Table 1 column 6 stated the magnitude of the Kolmogorov-Smirnov value obtained by SPSS and used to reject or accept the null hypothesis. The null hypothesis states that the yields for the regencies/cities that are determined to follow the normal distribution. Therefore, Kolmogorov-Smirnov value for Batang, Kudus and Magelang Districts is more than the Kolmogorov-Smirnov value table  $D_{\alpha=0.05; n=27} = 2.54$ , then the distribution of the harvest does not follow the normal distribution. In calculating the premium

in Table 1 column 7, 8 and nine, the two districts were excluded.

Analysis of the harvest yield data used in this research results in variation coefficient value  $\frac{s}{\bar{x}}$

which is relatively low or close to 0 (Table 1 column 5). Consequently, the data of harvest yield in all regencies/cities in Central Java may be declared as quite normal. Relatively low coefficient of variation causes  $\frac{\bar{x}}{s}$  high, and the value  $-0.75 \cdot \frac{\bar{x}}{s}$  is unavailable in Standard Normal Table.

Consequently  $\Phi\left(\frac{-0.75 \cdot \bar{x}}{s}\right) \approx 0$  and  $\phi\left(\frac{-0.75 \cdot \bar{x}}{s}\right) \approx 0$

thus equation (11) becomes

$$P_2 = \frac{4}{\sqrt{2\pi}} \frac{s}{\bar{x}} = 1.60 \cdot \frac{s}{\bar{x}} \quad (15)$$

Equation (15) explains that the higher the coefficient of variation, the higher the premium rate is. Premium calculation using equations (14) or (15) is given in Table 1 column 8. Equation (15) also explains that in case harvest yield is normally distributed with variation coefficient close to 0, then the premium price determining model shall depend only on the variation coefficient and may be determined without a standard normal table. In equation (14), the cumulative value is calculated in assistance of Standard Normal Table  $Z \sim N(0,1)$ . Almost all Standard Normal Tables only attach value up to  $z = 3.99$ . The complete table puts value  $z$  up to  $z = 4.99$ . Meanwhile, the calculation using the data results in value  $z > 5$ , thus the use of Standard Normal Table results in  $\Phi(z) \approx 0$  and  $\phi(z) \approx 0$ .

Following [20] and the equation (13) for  $z \geq 5.5$ , we then get

$$\Phi(z) = 1 - \frac{1}{\sqrt{2\pi}} \exp\left(-\frac{1}{2}z^2 - \frac{94}{100}z^{-2}\right) \quad ; \quad z \geq 5.5 \quad (16)$$

Following the equation (16), we get the results as

$$\Phi(-z) = 1 - \Phi(z) = \frac{1}{\sqrt{2\pi}} \exp\left(-\frac{1}{2}z^2 - \frac{94}{100}z^{-2}\right) \quad (17)$$

Furthermore, the equation (17) is used to approach the value  $\Phi\left(\frac{-0.75 \cdot \bar{x}}{s}\right) = \Phi(-0.75 \cdot z)$  on the equation

(15), with  $z = \frac{\bar{x}}{s}$  because the value of

$\phi\left(\frac{-0.75 \cdot \bar{x}}{s}\right) \approx 0$ , then the equation (11) is written

as

$$P_3 = 6 \cdot \Phi\left(\frac{-0.75 \cdot \bar{x}}{s}\right) + 1.60 \cdot \frac{s}{\bar{x}}$$

(18)

Moreover, the premium rate is then computed using the equation (18) as given in Table 1 column 9. Here, the column (9) of Table 1 is the same as the column (8). It is due to the value  $\frac{-0.75 \cdot \bar{x}}{s}$  is quite

low, thus  $\Phi\left(\frac{-0.75 \cdot \bar{x}}{s}\right) \approx 0$ .

**Table1.** RFI Premium Rate (in IDR) in Central Java Province

No	Regency(es)	$\bar{x}$	$S$	$\frac{s}{\bar{x}}$	K-S	P1	P2	P3
						Eq. 13	Eq. 15	Eq. 18
						(IDR)	(IDR)	(IDR)
1	Banjarnegara	55.38	3.9	0.07	0.135	1,556,100	112,000	112,000
2	Banyumas	54.124	2.455	0.045	0.126	979,545	72,000	72,000
3	Batang	48.632	2.98	0.061	0.271	1,189,000	97,600	97,600
4	Blora	49.613	2.223	0.045	0.17	886,977	72,000	72,000
5	Boyolali	54.279	3.582	0.066	0.134	1,429,218	105,600	105,600
6	Brebes	56.744	3.047	0.054	0.125	1,215,753	86,400	86,400
7	Cilacap	55.334	3.188	0.058	0.177	1,272,012	92,800	92,800
8	Demak	52.394	6.991	0.133	0.186	2,789,409	212,800	212,800
9	Grobogan	55.696	4.014	0.072	0.131	1,601,586	115,200	115,200
10	Jepara	52.447	2.592	0.049	0.161	1,034,208	78,400	78,400
11	Karanganyar	57.822	2.817	0.051	0.125	1,123,983	81,600	81,600
12	Kebumen	55.104	3.817	0.069	0.186	1,522,983	110,400	110,400
13	Kendal	54.843	4.08	0.074	0.189	1,627,920	118,400	118,400
14	Klaten	57.798	4.387	0.076	0.148	1,750,413	121,600	121,600
15	Magelang City	52.926	2.776	0.052	0.228	1,107,624	83,200	83,200
16	Pekalongan City	51.725	4.383	0.085	0.194	1,748,817	136,000	136,000
17	Salatiga City	51.109	5.142	0.101	0.176	2,051,658	161,600	161,600
18	Semarang City	47.802	4.587	0.096	0.192	1,830,213	153,600	153,600
19	Surakarta City	55.769	5.229	0.094	0.106	2,086,371	150,400	150,400
20	Kota Tegal	55.887	3.829	0.069	0.11	1,527,771	110,400	110,400
21	Kudus	52.63	3.333	0.063	0.269	1,329,870	100,800	100,800
22	Magelang	54.124	3.622	0.067	0.256	1,445,178	107,200	107,200
23	Pati	50.503	3.939	0.078	0.207	1,571,661	124,800	124,800
24	Pekalongan	48.07	2.959	0.062	0.101	1,180,641	99,200	99,200
25	Pemalang	51.7	2.138	0.041	0.136	853,062	65,600	65,600
26	Purbalingga	53.391	3.73	0.07	0.192	1,448,270	112,000	112,000
27	Purworejo	54.758	3.298	0.06	0.148	1,315,902	96,000	96,000
28	Rembang	50.3	3.575	0.071	0.211	1,426,425	113,600	113,600
29	Semarang	49.772	4.227	0.085	0.123	1,686,573	136,000	136,000
30	Sragen	55.204	3.69	0.067	0.152	1,472,310	107,200	107,200
31	Sukoharjo	58.765	5.038	0.086	0.236	2,010,162	137,600	137,600
32	Tegal	54.454	2.617	0.048	0.15	1,044,183	76,800	76,800



33	Temanggung	55.8	4.731	0.085	0.206	1,887,669	136,000	136,000
34	Wonogiri	53.933	3.66	0.068	0.127	1,460,340	108,800	108,800
35	Wonosobo	51.276	1.785	0.035	0.202	712,215	56,000	56,000
Total premium (IDR)							3,544,000	3,544,000
Pure premium principle (IDR)						3,544,000/32 = 110,750		
Deviation standard principle (IDR)						(78,151 ; 143,349)		

### 3.4. The RFI Premium Calculation for References

#### Central Java Province

The results in the premium rate of the farmers in Central Java Province must pay for each hectare from IDR 111,650 (minimum) to IDR 322,190 (maximum). It is reasonable that all regencies/cities in Central Java uses single premium price with anequal rate. Therefore, a single premium will be calculated for Central Java Province. The simplest way is to take the average of all premium values using equation (10). This method is called a pure *premium principle*. Using equation (10), the single premium rate generated for Central Java Province is  $\bar{P} = \frac{\text{IDR } 3,544,000}{32} = \text{IDR}$

110,750. The other single premium rate calculation uses standard deviation principle. The variance of premium rate is calculated from equation (11)

$$\sigma_p^2 = \frac{1}{31} \times 32,943,554,816 = 1,062,695,317.$$

With the level of significance 95%, the premium rate calculates with equation (12) is at the interval (IDR 78,151; IDR 143,349).

#### 4. Conclusions

In this paper sustainable rice farming through supply chain risk management was determined. The use of the equation (9) which requires the coefficient of variation of 0.25 produces a very high premium price. In Central Java case, equation (9) cannot be implemented since the coefficient of variation of harvest yield is close to 0 (even if the results presented). The RFI premium rate for 1 hectare of land designated at 3% of the maximum benefit value of IDR 6,000,000, i.e. IDR 180,000. According to the calculation results, the lowest RFI premium is IDR 56,000 in Wonosobo Regency, and the highest premium is IDR 161,600 in Salatiga City. The fair RFI premium rate for Central Java Province, when the *pure premium principle* is used to calculate, is IDR 110,750. Meanwhile, when the standard deviation principle is used, the premium has resulted between IDR 78,151 and IDR 143,349. The theoretical calculation showed the premium value of IDR 208,458 per hectare when there are only 100 participants per regency (city) and IDR 182,846 per hectare if there are 10,000 participants per regency (city). These numbers are not much different from the currently implemented premium rate.

- [1] Pasaribu SM, "Developing rice farm insurance in Indonesia", Agriculture and Agricultural Science Procedia I, pp: 33-41, 2010. doi:10.1016/j.aaspro.2010.09.005.
- [2] Bharamappanavara SC, Hasanabadi MS, Handigol JA, Yeledalli RA, "Alternative model for crop insurance: A case of onion crop (*alliumcepa*)" Proceedings of the International Conference on Applied Economics – ICOAE, pp: 85-90, 2010.
- [3] Babcock BA, "Using Prospect Theory to Explain Anomalous Crop Insurance Coverage Choice", Paper to be Presented at the 2015 ASSA meetings, Boston, MA, 2017.
- [4] Goodwin BK, "An empirical analysis on the demand for multiple peril crop insurance: Reply", American Journal of Agricultural Economics, 76, pp: 952-953, 1994.
- [5] Pongpullponsak A, Sarikavanij S, Jiarasuksakun T, "Mathematical Modelling for the Estimation of Crop Insurance Premium: A Case Study of Total Premium Equal Damage Compensation", Journal of Statistics: Advances in Theory and Applications, 4(2), pp: 73-89, 2010.
- [6] Mortensen E, Block P, "ENSO Index-Based Insurance for Agricultural Protection in Southern Peru", Geosciences, 8, 64, 2018. doi:10.3390/geosciences8020064.
- [7] Reyes CM, Agbon AD, Mina CD, Arboneda A, "Crop Insurance Program of the Philippine Crop Insurance Corporation (PCIC): Integrative Report from the Five Case Regions in the Philippines", Discussion Paper Series No. 2017-39. Philippine Institute for Development Studies, (2017).
- [8] Hatt, M., Heyhoe, E., and Whittle, L. *Options for Insuring Australian Agricultural*. Department of Agricultural, Fisheries and Forestry, Australian Bureau of Agricultural and Resources Economics and Sciences (ABARES), 2012. Tersedia: <http://www.daff.gov.au/SiteCollection>. Diakses 29 Mei 2017.
- [9] Gulati A, Terway P, Hussain S, "Crop Insurance in India: Key Issues and Way Forward", Working Paper No. 352. Indian Council for Research on International Economic Relations, 2018.
- [10] Miao R, Hennessy DA, Feng H, "The Effects of Crop Insurance Subsidies and Sodsaver on Land-Use Change", Journal of Agricultural and Resource Economics, 41(2), pp:247–265, 2016.

- ISSN 1068-5502. Copyright 2016 Western Agricultural Economics Association.
- [11] Ozaki VA, Goodwin BK, Shiota R, “*Parametric and nonparametric statistical modelling of crop yield: implication for pricing crop insurance contracts*”, *Applied Economics*, 48, pp: 1151-1164, 2008.
- [12] Bowers Jr NL, Gerber HU, Hickman JC, Jones DA, Nesbitt CJ, *Actuarial Mathematics*, USA: The Society of Actuaries, 1997.
- [13] Sukono, Suyudi M, Islamiyati F, Supian S “*Estimation model of life insurance claims risk for cancer patients by using Bayesian method*” Paper presented at the IOP Conference Series: Materials Science and Engineering, 166 (1), 2017. doi:10.1088/1757-899X/166/1/012022.
- [14] Prabowo P, Pratikno B, Sulaiman U, Cahyanto WT, Irayani Z, “*The Contribution of Mathematical and Sciences for Developing Quality of Rural Lifestyle (Peran Matematika dan Sains dalam Mendukung Gaya Hidup Perdesaan (Rural Lifestyle) yang Berkualitas)*”, Purwokerto: Penerbit UNSOED, 2017.
- [15] Prayogo IH, Prabowo A, “*Mathematical Formula for Determining the Premium Rate of Rice Farming Insurance using Normal Distribution (Formula Matematika untuk Menghitung Harga Premi Asuransi Pertanian Menggunakan Distribusi Normal)*” Prosiding Seminar National University as Nahdlatul Ulama, Purwokerto, 14 , 2018.
- [16] Muttaqin AK, Kudus A, Karyana Y, “*Metode parametrik untuk menghitung premi program asuransi usahatani padi di Indonesia*”, *Ethos (Journal Penelitian dan Pengabdian Masyarakat)*, pp: 318-326, 2016.
- [17] Department of Law and HAM RI, “*Law No. 19, 2013 about the Farmer Protection and Empowerment*”, Jakarta: Department of Law and HAM, 2013.
- [18] Statistics Bureau of the Central Java Province, “*Central Java in the Number 1991-2017*”, 2017.
- [19] Smith VH, “*The US Federal Crop Insurance Program: A Case Study in Rent-Seeking*”, *Mercatus Working Paper*, Mercatus Center at George Mason University, Arlington, VA, pp. 1-52, 2017.
- [20] Johnson NI, Kotz S, Balakrishnan N, *Continuous Univariate Distribution*, John Wiley & Sons, 1994.
- [21] Bahram, Mirzamasoumzadeh, vahid, Mollasadeghi. *Effects of osmotic stress on chlorophyll and proline different wheat cultivars*, *UCT Journal of Research in Science , Engineering and Technology*, Issue 4, pp.12-13, 2013.