

p-ISSN 2085-191X (print)  
e-ISSN 2338-7610 (online)

# Biosaintifika

Journal of Biology & Biology Education



Nationally Accredited by Ministry of Research and Technology 2019-2024

Biosaintifika	Volume 12	Number 3	Pages 288-487	Semarang December 2020	p-ISSN 2085-191X (print) e-ISSN 2338-7610 (online)
---------------	-----------	----------	---------------	---------------------------	---



## AIMS AND SCOPE

Biosaintifika [Nationally Accredited by Ministry of Research, Technology and Higher Education, Number 2/E/KPT/2015 periode 2015-2020], an electronic international journal, provides a forum for publishing the original research articles from contributors, and the novel technology news related to biological research and biological education.

Scientific articles dealing with botany, zoology, environmental, and biotechnology, etc. are particularly welcome. This journal encompasses original research articles including: botany; zoology; environmental; biotechnology; ethnobotany; ecotourism; biochemistry; biology education.

## PUBLICATION INFORMATION

Biosaintifika [p-ISSN 2085-191X | e-ISSN 2338-7610] has been published three a year, April, August and December by Department of Biology, Faculty of Mathematics and Sciences, Universitas Negeri Semarang, Indonesia collaborate with Perhimpunan Biologi Indonesia.

This journal has been a CrossRef Member [DOI 10.15294/biosaintifika] since 2014, so that all articles published by this journal have DOI unique numbers. This journal has been abstracted and distributed by EBSCO Publishing started from Volume 6 Number 2 Year 2014 to present. This journal has been a DOAJ since 2015, CABI since 2016 and ASEAN Citation Index since 2018.

## JOURNAL CITATIONS AND IMPACT FACTOR



For best and  
innovative research  
papers, click

[journal.unnes.ac.id](http://journal.unnes.ac.id)

## SUBSCRIPTION

Annual Subscription (3 issues: April, August & December), Combined Institutional Rate (print + electronic): Rp. 1.500.000,-. Please send your application to e-mail [biosaintifika@mail.unnes.ac.id](mailto:biosaintifika@mail.unnes.ac.id) with :

Subject : Subscription  
Content : Name, Address, Receipt of Payment

Payment to Bank Negara Indonesia (BNI)  
Account Number 04 300 222 75 name Lutfia Nur Hadiyanti

## JOURNAL HISTORY

Biosaintifika was established in 2009. The title with its subtitle was Biosaintifika: Berkala Ilmiah Biologi. Started from Volume 5, Number 2 Year 2013, the journal was only published by using one language namely English. The name of the journal with the sub-title was changed to Biosaintifika: Journal of Biology & Biology Education.



## TABLE OF CONTENTS

Volume 12, Number 3, December 2020

- 288-296 **Stability and Antibacterial Property of Polyherbal Mouthwash Formulated Using Local Ingredients**  
Juman Nafea, Mohamed Edbeib, Kin Israel R. Notarte, Fahrul Huyop, Harisun Yaakub
- 297-303 **The Antioxidant Content and Activity of Various Plant Organs of Kitolod (*Isotoma longiflora*)**  
Grahita Rezhi Egarani, Sri Kasmiyati, Elizabeth Betty Elok Kristiani
- 304-310 **Identification of Gamma-Amino Butyric Acid Isolates Lactic Acid Bacteria Results from The Isolation of Rusip**  
S Feta Avila Prayitno, Agung Suprihadi, Endang Kusdiyantini
- 311-318 **Selection of Soybean (*Glycine max*) Germplasm Against Biotrophic Fungi Disease Based on Anatomical Resistance**  
Siti Samiyarsih, Ade Yuanita Putri Pratiwi, Juni Safitri Muljowati, Nur Fitrianto
- 319-328 **Carotenoid Production by *Rhodospiridium paludigenum* Using Orange Peel Extract as Substrate**  
Renna Eliana Warjoto, Jennifer Jennifer, Bibiana Widyawati Lay
- 329-334 **Nutritional Content of Bone Flour Made from Plecos Fish *Pterygoplichthys pardalis* from the Ciliwung River, Indonesia**  
Handhini Dwi Putri, Dewi Elfidasari, Haninah Haninah, Irawan Sugoro
- 335-342 **Potential of Ecology based Agrotourism for Agricultural Education in Besur Village, Lamongan Regency**  
Slamet Ifandi, Yustika Aulia Rahma
- 343-349 **Qualitative Tests of Secondary Metabolite Compounds in Ethanol Extract of *Spirulina platensis* from Karimun Jawa Sea, Indonesia**  
Renni Yuniati, Muhammad Zainuri, Hermin Kusumaningrum
- 350-355 **Antioxidant Activity of Jojoba (*Simmondsia chinensis*) Seed Residue Extract**  
Arnold Patogi Siahaan, Eti Rohaeti, Ali Mahmoud Muddathir, Irmanida Batubara
- 356-362 **Total Phenol Content of *Avicennia marina* Leaf and Its Relationship to the Environmental Quality**  
Endah Dwi Hastuti, Munifatul Izzati, Sri Darmanti
- 363-369 **Larvicidal Activity of *Brugmansia candida* against *Aedes aegypti* and *Culex quinquefasciatus* (Diptera: Culicidae)**  
Setiawan Khoirul Himmi, Didi Tarmadi, Dita Meisyara, Anugerah Fajar, Titik Kartika, Ikhsan Guswenrivo, Sulaeman Yusuf
- 370-377 **Histopathological of White Rats Aorta Induced by High-Fat Feed After Administered by Neem Leaf Ethanol Extract**  
Baiq Miftahul Jannah, Sri Isdadiyanto, Agung Janika Sitasiwi



- 378-383 ***Bifidobacterium longum*, a Predominant Bifidobacterium in Early-life Infant Potentially Used as Probiotic**  
Dyah Fitri Kusharyati, Anwar Rovik, Dini Ryandini, Hendro Pramono
- 384-391 **Alkaline Phosphatase Expression From Mice Mesenchymal Stem Cells Induced By Flamboyant Flower (*Delonix regia*) Extract**  
Kartini Eriani, Deby Anggraini, Yudha Bintoro, Ichsan Ichsan, Al Azhar, Silmi Mariya
- 392-398 **Science Web-Module Integrated with Tannery Waste as Local Potential to Improve Students' Problem Solving**  
Atznain Iqma Miswami, Heru Nurcahyo
- 399-407 **Morphological Variation of Blue Panchax (*Aplocheilus panchax*) Lives in Different Habitat Assessed Using Truss Morphometric**  
Diah Mustikasari, Suhestri Suryaningsih, Agus Nuryanto
- 408-413 **Comparison of Nutritional Content of *Mangifera indica* L. var. Wirasangka with Three Other Varieties in Tegal Regency**  
Enni Suwarsi Rahayu, Amin Retnoningsih, Muhammad Abdullah, Priyanti Susanti
- 414-421 **Ethnobotanical Study of Early Childhood Medicinal Plants Used by the Local People in South Bangka Regency, Indonesia**  
Henri Henri, Vitryany Nababan, Luchman Hakim
- 422-430 **Anti-tumor Potential Ethnomedicinal Plants from Dayak Tribes in Central Kalimantan**  
Liswara Neneng, Asri Pujirahadju, Ferayani Ferayani, Tri Widayat
- 431-437 **Blood Hematological and Biochemical Parameters of *Osteochilus vittatus* with *Spirulina platensis* Supplementation in Biofloc System**  
Muhammad Azharul Rijal, Susanto Susanto, Sorta Basar Ida Simanjuntak, Hernayanti Hernayanti, Purnama Sukardi
- 438-445 **Biochemical and Histopathology Analysis of Liver Damage in Hypercholesterolemic Rats Induced by Tomato Extract**  
Retno Sri Iswari, Muchamad Dafip, Muhammad Rifa'i
- 446-452 **Characteristics of DNA Barcodes from Three *Thrixspermum* Orchids Based on ITS2 Regions**  
Siti Rohimah, Tri Ratnasari, Mukhamad Su'udi
- 453-458 **Plantlet Formation and Acclimatization of Sugarcane cv. PS 881 with Different Types and Concentration of Auxin**  
Rendie Prasetyo, Sugiyono Sugiyono, Elly Proklamasiningsih, Prita Sari Dewi
- 459-468 **Isolation of Potential Plant Growth Promoting Rhizobacteria (PGPR) from Cassava (*Manihot esculenta*) Rhizosphere Soil**  
Suri Raihan Safriani, Lenni Fitri, Yulia Sari Ismail
- 469-477 **In Situ Bioremediation Strategies for the Recovery of Mercury-contaminated Land in Abandoned Traditional Gold Mines in Indonesia**  
Winardi Winardi, Eko Haryono, Sudrajat Sudrajat, Endang Sutariningsih Soetarto
- 478-487 **Feed Resources Determination Based on Pollen Diversity in Trigona Bees (*Trigona* sp.) Colony**  
Muachiroh Abas, Eddy Tri Sucianto




[Home](#) > [About the Journal](#) > [Editorial Team](#)

## Editorial Team

### Editor-in-Chief

1. Dyah Rini Indriyanti, [SCOPUS ID: 57194044439] Universitas Negeri Semarang, Indonesia

### International Editorial Board

1. Fahrul Huyop, [SCOPUS ID:10240240100] Universiti Teknologi Malaysia, Malaysia
2. Mulyoto Pangestu, [SCOPUS ID: 35488897500] Monash University, Australia
3. Mukh Syaifudin, [SCOPUS ID: 6507831675] Badan Tenaga Nuklir Nasional, Indonesia
4. Yohanes Budi Widianarko, [SCOPUS ID: 6507055401] Soegijapranata Catholic University, Semarang, Indonesia
5. Amir Hamidy, [SCOPUS ID: 24341129500] Research Center For Biology-Cibinong Science Center, Indonesia
6. S. Sudarsono, [SCOPUS ID: 16450098400] Institut Pertanian Bogor, Indonesia
7. Iin Kurnia, [SCOPUS ID 57193537585] Badan Tenaga Nuklir Nasional, Indonesia
8. Mohammad Irham, [SCOPUS ID: 55312221800] Research Center for Biology-Indonesian Institute of Sciences, Bogor, Indonesia

### Associate Editors

1. Talitha Widiatningrum, [SCOPUS ID: 56798544200] Universitas Negeri Semarang, Indonesia
2. Margareta Rahayuningsih, [SCOPUS ID: 57094066700] Universitas Negeri Semarang, Indonesia
3. Amin Retnoningsih, [SCOPUS ID: 51864647000] Universitas Negeri Semarang, Indonesia
4. Enni Suwarsi Rahayu, [SCOPUS ID: 56644635000] Universitas Negeri Semarang, Indonesia
5. Niken Subekti, [SCOPUS ID: 57195315756] Universitas Negeri Semarang, Indonesia



This work is licensed under a [Creative Commons Attribution 4.0 International License](#).



### ABOUT THE JOURNAL

[Aims and Scope](#)  
[Publication Ethics](#)  
[Indexing & Abstracting](#)  
[Editorial Team](#)  
[Reviewer Team](#)  
[Contact](#)

### COLLABORATE WITH



### FOR AUTHORS

[Guidelines for Author](#)  
[Manuscript Template](#)  
[Magdaley Guidelines](#)  
[Online Submission](#)  
[Google Citation Analysis](#)  
[Scopus Citation Analysis](#)

### Readers

ID 178,488	GB 569
US 16,355	IR 464
IN 2,521	AU 461
MY 2,238	PK 424
PH 1,634	FR 379
CN 1,037	VN 368
TH 1,025	NL 365
BR 830	MX 351
JP 761	DE 335
SG 609	EG 333
TR 591	CA 330

Pageviews: 609,265  
 Flags Collected: 174



00546673 [View My Stats](#)

### USER

Username   
 Password   
☐ Remember me




[Home > Indexing & Abstracting](#)

## Indexing & Abstracting

Biosaintifika: Journal of Biology & Biology Education has been covered by the following services:

1. Science and Technology Index (SINTA) 2
2. Google Scholar
3. DIMENSIONS
4. DOAJ
5. ASEAN Citation Index
6. Indonesian Publication Index
7. Indonesian Scientific Journal Database
8. Microsoft Academic
9. EBSCO Open Science Directory
10. EBSCO Academic Search Complete
11. National Library of Medicine (NLM)
12. CAB Abstract (CABI)
13. DOI Crossref
14. ROAD
15. BASE
16. Sherpa/Romeo
17. Ulrichsweb.com™ (Proquest)
18. WorldCat
19. Summon™ from Serials Solutions
20. Hinari
21. Mendeley
22. Citeulike
23. ResearchGate
24. Scilit



This work is licensed under a [Creative Commons Attribution 4.0 International License](#).



### ABOUT THE JOURNAL

[Aims and Scope](#)
[Publication Ethics](#)
[Indexing & Abstracting](#)
[Editorial Team](#)
[Reviewer Team](#)
[Contact](#)

### COLLABORATE WITH



### FOR AUTHORS

[Guidelines for Author](#)
[Manuscript Template](#)
[Mendeley Guidelines](#)
[Online Submission](#)
[Google Citation Analysis](#)
[Scopus Citation Analysis](#)

### Readers

ID 178,488	GB 569
US 16,355	IR 464
IN 2,521	AU 461
MY 2,238	PK 424
PH 1,634	FR 379
CN 1,037	VN 368
TH 1,025	NL 365
BR 630	MX 351
JP 761	DE 335
SG 609	EG 333
TR 591	CA 330

Pageviews: 609,265

Flags Collected: 174



00546672 [View My Stats](#)

### USER

Username

Password

☐ Remember me




[Home](#) > [About the Journal](#) > **Editorial Policies**

## Editorial Policies

- [Focus and Scope](#)
- [Section Policies](#)
- [Peer Review Process](#)
- [Open Access Policy](#)
- [Archiving](#)
- [Policy of Screening for Plagiarism](#)

## Focus and Scope

Biosaintifika Journal of Biology & Biology Education, an electronic journal, provides a forum for publishing the original research articles related to biological research and biological education.

Scientific articles dealing with botany, zoology, environmental, and biotechnology, etc. are particularly welcome.

This journal encompasses original research articles, including:

- botany
- zoology
- environmental
- biotechnology
- ethnobotany
- ecotourism
- biochemistry
- pest
- vaccine
- disease
- bacterium
- bird
- insect

## Section Policies

### Articles

☒ Open Submissions ☒ Indexed ☒ Peer Reviewed

## Peer Review Process

All manuscripts submitted to this journal must follow focus and scope, and author guidelines of this journal. The submitted manuscripts must address scientific merit or novelty appropriate to the focus and scope. All manuscripts must be free from plagiarism contents. All authors are suggested to use plagiarism detection software to do the similarity checking. Editors check the plagiarism detection of articles in this journal by using a Turnitin software.

The research article submitted to this journal will be **double blind review** at least 2 (two) or more expert reviewers. The reviewers give scientific valuable comments improving the contents of the manuscript.

Final decision of articles acceptance will be made by Editors according to reviewers comments. Publication of accepted articles including the sequence of published articles will be made by Editor in Chief by considering sequence of accepted date and geographical distribution of authors as well as thematic issue.

## Open Access Policy

This journal provides immediate open access to its content on the principle that making research freely available to the public supports a greater global exchange of knowledge.

This journal is open access journal which means that all content is freely available without charge to users or / institution. Users are allowed to read, download, copy, distribute, print, search, or link to full text articles in this journal without asking prior permission from the publisher or author. This is in accordance with **Budapest Open Access Initiative**

## Archiving

This journal utilizes the LOCKSS system to create a distributed archiving system among participating libraries and permits those libraries to create permanent archives of the journal for purposes of preservation and restoration. [More...](#)

## Policy of Screening for Plagiarism

All manuscripts must be free from plagiarism contents. All authors are suggested to use plagiarism detection software to do the similarity checking. Editors check the plagiarism detection of articles in this journal by using a Turnitin software.



### ABOUT THE JOURNAL

[Aims and Scope](#)
[Publication Ethics](#)
[Indexing & Abstracting](#)
[Editorial Team](#)
[Reviewer Team](#)
[Contact](#)

### COLLABORATE WITH



### FOR AUTHORS

[Guidelines for Author](#)
[Manuscript Template](#)
[Manuscript Guidelines](#)
[Online Submission](#)
[Google Citation Analysis](#)
[Scopus Citation Analysis](#)

### Readers

ID 178,468	GB 569
US 16,355	IR 464
IN 2,521	AU 461
MY 2,238	PK 424
PH 1,634	FR 379
CN 1,037	VN 368
TH 1,025	NL 365
BR 830	MX 351
JP 761	DE 335
SG 609	EG 333
TR 591	CA 330

Pageviews: 609,265

Flags Collected: 174



00546674 [View My Stats](#)

### USER

Username

Password

☐ Remember me



This work is licensed under a [Creative Commons Attribution 4.0 International License](#).



## ***Bifidobacterium longum*, a Predominant Bifidobacterium in Early-life Infant Potentially Used as Probiotic**

**Dyah Fitri Kusharyati<sup>2\*</sup>, Anwar Rovik<sup>1</sup>, Dini Ryandini<sup>2</sup>, Hendro Pramono<sup>2</sup>**

<sup>1</sup>Centre of Tropical Medicine, Faculty of Medicine, Public Health, and Nursing, Universitas Gadjah Mada. PAU Building 2nd Floor, Jl. Teknik Utara, Berek, Sleman, Yogyakarta, Indonesia 53288

<sup>2</sup>Department of Microbiology, Faculty of Biology, Universitas Jenderal Soedirman. Jl. Dr. Suparno No. 63 Karangwangkal, Purwokerto Utara, Banyumas, Jawa Tengah, Indonesia 53122

\*Corresponding author: [dfitri.k@gmail.com](mailto:dfitri.k@gmail.com)

**Abstract.** In early life, Bifidobacteria are reported as dominant bacteria in the human digestive tract. Bifidobacterium is potential as a probiotic. The probiotic property of Bifidobacterium is strain-specific. This study aimed to identify the Bifidobacterium (isolated from less than one-month-old healthy infant stool that potentially used as probiotic) based on the 16S rRNA gene and determining their similarities among Bifidobacteria. The probiotic-potentially Bifidobacterium was re-characterized by performing a Gram's staining and catalase test. The DNA extraction process was followed by the 16S rRNA amplification using 27F-1492R primers. Sequence similarity was checked by using the BLAST program in the GenBank. The phylogenetic tree was constructed by using a neighbor-joining (NJ) method within the MEGA version 7.0 package. The 16S rRNA gene was presented at 1,500 bp length. Bifidobacterium strains have a 91.14-94.26 % sequence similarity to *B. longum* subsp. *longum* strain CCUG30698 which is considered as insufficient for species and genus identifications. However, those isolates could be assigned in a phylogenetic position. This present study suggested the *B. longum* as the dominant strain of Bifidobacterium in the gut of early-life infants which has potential as a probiotic and is considered as an ideal probiotic for human consumption. This study is useful as basic information for other related research, as well as its application in industrial or community service fields.

**Key words:** 16S rRNA; *Bifidobacterium longum*; Infant Stool; Probiotic

**How to Cite:** Kusharyati, D. F., Rovik, A., Ryandini, D., & Pramono, H. (2020). *Bifidobacterium longum*, a Predominant Bifidobacterium in Early-life Infant Potentially Used as Probiotic. *Biosaintifika: Journal of Biology & Biology Education*, 12(3), 379-384.

**DOI:** <http://dx.doi.org/10.15294/biosaintifika.v12i3.25895>

### **INTRODUCTION**

The microorganism ecosystem plays a key role in the human body (Gouba et al., 2019). The composition of microorganisms expresses the health level of the human digestive tract. The microbial colonization begins in the first few days after birth (Attri et al., 2018) and continues to be more complex during feeding. Bifidobacteria colonize the digestive tract of infants starting from the first week after birth (Oishi et al., 2013). Also, Bifidobacteria are reported as dominant bacteria in the human digestive tract (Milani et al., 2013; Pacheco et al., 2015; Roger et al., 2010; Walker et al., 2015) based on both culture-based techniques and molecular analysis (Milani et al., 2013).

The vertical transmission from mothers to their children during birth is thought to be the main source of Bifidobacterium (Sirilun et al., 2015). *B. adolescentis*, *B. bifidum*, *B. catenulatum*, *B. longum*, and *B. pseudocatenulatum* were found to be monophyletic between individual mother and infant pairs (Makino, 2018; Murphy et al., 2017). Bifidobacteria are commonly found in the human milk and feces. Makino (2018) reviewed that Bifidobacterium can be found in infant feces at a concentration as high as  $10^{10}$  cells/g.

It is suggested that infant gut and feces are a potential source for probiotic discovery.

Probiotic confer health benefits, such as balancing the gut microbiota, maintaining the host immunity, and keeping the homeostasis of host metabolism (Devaraj et al., 2013; Lomasney et al., 2014; Nagpal et al., 2018). Bacteria, yeast, and mold that can act as probiotics include Lactobacillus, Streptococcus, Leuconostoc, Pediococcus, Enterococcus, Bifidobacterium, Bacillus, *Saccharomyces cerevisiae*, *Candida pintolopesii*, and *Aspergillus oryzae* (Sornplang & Piyadeatsoontorn, 2016). Lactic Acid Bacteria (LAB) isolates from the human digestive tract are considered safe to be added to food and beverage products (Aloisio et al., 2012). Therefore, many products have been supplemented with LAB (Russell et al., 2012).

The probiotic property of Bifidobacterium is strain-specific. It is suggested that Bifidobacterium identification both microbiologically and molecularly is considered essential. The most common genotypic identification is 16S rRNA gene-based identification. The 16S rRNA gene is commonly used to construct the phylogenetic tree because the nucleic acid among rRNA molecules can be compared correctly (Kasi et al., 2019).

This present study aimed to identify the Bifidobacterium (isolated from less than one-month-



old healthy infant stool that potentially used as probiotic) based on the 16S rRNA genes and know their similarities among Bifidobacteria. Recently, research has focused on isolating and characterizing new potential strains of probiotic from different sources, especially from the human gastrointestinal tract. The ideal probiotic for human consumption should have a human origin because the probiotic can already effectively colonize the digestive tract of the host.

Our previous study isolated LAB from the human gut aimed to obtain probiotic bacteria that are able to inhabit and perfectly grow in the human digestive tract. This present study is useful as basic information for other research in the fields of nutrition, microbiome, metabolite production, microbial phylogenetic, and others. In addition, potential probiotic isolates that obtained from this study can be used for the production of functional food and beverages in the industrial or community service fields.

## METHODS

### Sample sources

The stool samples were collected from 3 less than one-month-old healthy infants in Banyumas area i.e. Purbalingga, Banyumas, and Sokaraja District with no exclusions based on delivery or feeding mode. Mothers and infants were in good health (self-reported). Subjects were excluded if the infant had a gastrointestinal disorder or had taken antibiotics in the previous 14 days, as well as if the infant had been ill in the previous 7 days, or was administered oral probiotics. Fresh stool samples were collected using a sterile Falcon tube 15 mL by the participants and immediately stored in home freezers until being delivered to the experimental laboratory within 24 hours of sample collection. Samples were placed in labeled collection tubes and stored at -20°C until the analysis.

### Bacterial cultivation and re-characterization

The culture stock of Bifidobacterium isolates (Bb1B, Bb2A, and Bb2E) was cultured on the MRS Agar medium (Oxoid) at 37 °C for 3 days, anaerobically. The growing colonies were further morphologically characterized and checked by performing a Gram's staining and catalase test.

### Extraction of bacterial DNA

The Bifidobacterium isolates were inoculated into Nutrient Broth medium (Merck) at 37 °C for 3 days, anaerobically. Next, 1 mL of Bifidobacterium culture was centrifuged (Thermo Scientific) at 10,000xg for 3 minutes. This stage was repeated until 50-100 mg pellets were obtained. The DNA extraction was carried out by following the manufacture protocol of Zymo Research Quick DNA<sup>TM</sup> Fungal/Bacterial Min-

iprep Kit with modification. The pellet was added by 200 µL of phosphate-buffered saline pH 7.4 (0.2g KCl, 1.44g Na<sub>2</sub>HPO<sub>4</sub>, 0.24g KH<sub>2</sub>PO<sub>4</sub>, and 800 mL distilled water for a final volume of 1 L solution) to the ZR BashingBead Lysis Tube, then 750 µL of BashingBead Buffer was added. The solution was vortexed for 15 seconds and centrifuged for 1 minute at 10,000xg. The supernatant (400 µL) was transferred into Zymo-spin<sup>TM</sup> III-F, then centrifuged for 1 minute at 8,000xg. This stage was carried out 2 times. The filtrate was collected in a 2 mL tube, then 1 mL of Genomic Lysis Buffer was added. The solution (800 µL) was transferred into the Zymo-spin<sup>TM</sup> IIC column then centrifuged at 10,000xg for 1 minute. This stage was carried out twice. The filtrate was removed, then the Zymo-spin<sup>TM</sup> IIC column was transferred to a new collecting tube. A total of 200 µL of DNA pre-Wash Buffer was added then centrifuged at 10,000xg for 1 minute. A total of 200 µL DNA Wash Buffer was added into the Zymo-spin<sup>TM</sup> IIC column and centrifuged at 10,000xg for 1 minute. The Zymo-spin<sup>TM</sup> IIC was transferred to a sterile 1.5 mL micro-centrifuge tube and added with 60 µL of Elution Buffer, then incubated at room temperature for 5 minutes. Next, it was centrifuged at 10,000xg for 30 seconds. The extracted DNA was stored at -20°C as DNA stock. The DNA was electrophoresed by using a 1 % agarose gel (100 V for 45 minutes).

### DNA quantification

A total of 3 µL extracted DNA was dripped on a NanoDrop (NanoVue) machine. The data was used to determine DNA quantity and purity.

### The 16S rRNA gene amplification

The gene amplification was performed by using forward (27F) primer (3'-AGAGTTTGATCM TGGCTCAG-5') and reverse (1492R) primer (3'-GGYTTACCTTGTTACGACTT-5'). The mixture of PCR reaction was as follows: 19 µL of Nuclease-Free Water, 25 µL of NZYTaQ II 2x Green Master Mix, 2 µL of 27F primer (5 µM), 2 µL of 1492R primer (5 µM), and 2 µL of DNA samples. PCR amplification conditions were 95 °C for 2 min, 35 cycles [95 °C for 30 sec, 51 °C for 30 sec, 72 °C for 90 sec], and then 72 °C for 5 min, then left at 8 °C for 3 min. The amplification product was electrophoresed by using a 1 % agarose gel (100 V for 45 minutes).

### Sequencing

A total of 20 µL PCR product was sent to the 1<sup>st</sup> Base Pte. Ltd. Company, Singapore to do the Sanger sequencing.



### Sequence analysis

Sequence analysis was conducted by using BioEdit. Sequence similarity was checked by using the Basic Local Alignment Search Tool (BLAST) program in the database of GenBank which is available on <http://www.ncbi.nlm.nih.gov>. The phylogenetic tree was constructed by using a neighbor-joining (NJ) method within the MEGA version 7.0 package. A 1,000 bootstrap replication was used to construct the evolution distance. The obtained 16S rRNA sequences were compared with some Bifidobacterium strains (*B. adolescentis* strain LCR4, *B. faecale* strain HBUAS55035, *B. stercoris* JCM15918, *B. longum* subsp. *longum* strain CCUG30698, *B. dentium* 16S ribosomal RNA, *B. catenulatum* subsp. *kashiwanohense* strain APCKJ1, *B. indicum*, *B. minimum* strain LMG11592, *B. pseudocatenulatum* strain IMAUFB090, *B. psychraerophilum*, *B. bohemicum* JCM18049, *B. hapali* strain MRM914) and an out-group strain (*Escherichia coli* E142).

### RESULTS AND DISCUSSION

A healthy gut consists of a highly diverse microbiome population (Wong & Santiago, 2017). In our previous study, we have successfully isolated 22 Bifidobacterium isolates from 3 less than one-month-old healthy infant stool. As in classifying Bifidobacteria by classical methods, *B. catenulatum*, *B. minimum*, and *B. indicum* were dominant isolates followed by *B. asteroides*, *B. galicum*, *B. coerinum*, and *B. dentium* (Figure 1). Some of those strains were grouped as human-specific Bifidobacteria i.e. *B. catenulatum* and *B. dentium* (Liu et al., 2013; Roger et al., 2010; Sun et al., 2015). At the time of writing, the genus Bifidobacterium was represented by over 30 species and subspecies from infant feces and healthy adults (Attri et al., 2018; Duranti et al., 2017; Mariat et al., 2019; Morita et al., 2011; Narayanan & Subramonian, 2015).

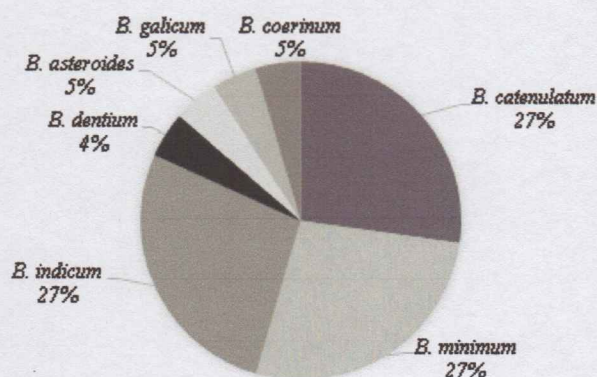


Figure 1. The diversity of Bifidobacterium isolated

from less than one-month-old healthy infant stool based on the classical methods

There were three Bifidobacterium isolates (Bb1B, Bb2A, and Bb2E) potentially used as probiotic which were screened primarily for their tolerance to acidity, resistance to lysozyme, antimicrobial activity against pathogenic microorganisms (*Escherichia coli* and *Candida albicans*), and capability in producing exopolysaccharide (Kusharyati et al., 2020). Other studies suggested that probiotic isolated from human and animal gut exhibit higher adhesion activity, and more likely to be resistant to low pH levels and high concentration of bile than other probiotic sources (Sornplang & Piyadeatsoontorn, 2016).

The potential Bifidobacterium isolates were re-cultured on the MRS Agar medium at 37 °C for 3 days, anaerobically. The growing colonies were observed as round shaped, creamy white, shiny surface, raised elevation, and flat edge (data not shown) colonies. The single colony was examined by Gram's staining, morphological characterization, and catalase test. Morphological characterization re-confirmed that all isolates were Gram-positive and rod-shaped cells.



Figure 2. Visualization of the amplification product of the 16S rRNA gene (marker: 1 kb DNA ladder)

The most common method to identify unknown microorganism is a culture-based method, which observed the phenotype characteristics including morphological, physiological, and biochemical tests following Bergey's Manual of Bacteriology. The patterns of sugar fermentation provide a guideline for microbiological identification of Bifidobacteria. However, it has resulted in some taxonomic uncertainties, since it has been shown to have low sensitivity and specificity (Benga et al., 2014). The culture-based method associated with the biological molecular technique is a way for more effective identification.

The 16S rRNA gene was shown to be conserved within the genus and species (Kasi et al., 2019). Some studies have developed various primer sets of 16S rRNA genes to target Bifidobacterium strains (Kondam et al., 2020; Ryandini et al., 2018; Sim et al.,

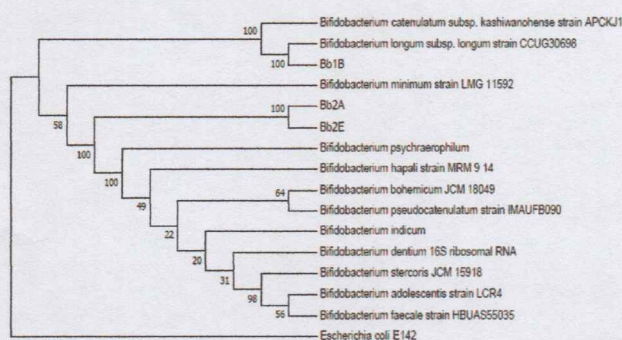


2012). In this study, the genome extraction of *Bifidobacterium* isolates yielded a 40.5-66.5  $\mu\text{g.mL}^{-1}$  of extracted DNA which presented at more than 10,000 bp length during visualization (data not shown). The amplification product of the 16S rRNA gene was presented at 1,500 bp length during visualization (Figure 2). The obtained 16S rRNA sequences length of Bb1B, Bb2A, and Bb2E isolates were 1448, 1445, and 1418 nucleotides, respectively (Table 1).

**Table 1.** Analysis of sequence similarity accessed from GenBank database

Isolate	Nucleotide length	Identical species	Query (%)	E-value
Bb1B	1448	<i>Bifidobacterium</i>	92	0.0
Bb2E	1418	<i>longum</i> subsp.	89	0.0
Bb2A	1445	<i>longum</i> strain CCUG30698, complete genome	89	0.0

In the present study, *Bifidobacterium* isolates are shown to have a high similarity to *B. longum* subsp. *longum* strain CCUG30698 (Table 1). Those similarity percentages which ranged from 91.14-94.26 % is considered as insufficient for species and genus identifications. However, those isolates could be assigned in a phylogenetic position. In general, an isolate is confirmed as identical species when it has more than 99 % sequence similarity to its comparable strains in GenBank (Da-Silva et al., 2013; Malviya et al., 2011). Since the sequence similarity was less than 97 %, a further study is needed.



**Figure 3.** Similarity index of isolated *Bifidobacterium* spp. among Bifidobacteria (The phylogenetic tree was constructed by using a neighbor-joining (NJ) method and 1,000 bootstrap replication within MEGA 7.0 version)

A phylogenetic tree can assess the sequence similarity as well as estimate the evolutionary distance among strains. *Bifidobacterium* Bb2E and Bb2A isolates were phenotypically identical. Both similarity and distance parameters placed the Bb2E and Bb2A

isolates in a different clade with Bb1B isolate (Figure 3). The dendrogram also showed that *Bifidobacterium* Bb1B isolate was identical to *B. longum* subsp. *longum* strain CCUG30698, which were closely related and placed in the same clade with *B. catenulatum* subsp. *kashiwanohense* strain APCKJ1. These species are commonly isolated from adults, but *B. longum* is occasionally found in infant feces (Liu et al., 2013; Roger et al., 2010).

*Bifidobacterium* Bb1B isolate was the most dominant strain found in infant stool (Kusharyati et al., 2020), which in this present study, has a 94.26 % sequence similarity to *B. longum* subsp. *longum* strain CCUG30698 (Table 1). Another study conducted by Malviya et al. (2015) found that more than 99 % of *Bifidobacterium* sequences isolated from breast-fed babies are matched to *B. longum*. Our finding suggested that *B. longum* as the dominant strain in the infant's gut (Table 1), since the microbial populations of the stool sample may reflect the microbial population in the gut.

*B. longum* dominance might be correlated with their ability in utilizing the nutrient. In the breastfeed-infants gut, lactose and human milk oligosaccharides (HMOs) encourage the growth of *Bifidobacterium* (Lawson et al., 2020; Murphy et al., 2017). Typical infant species such as *B. bifidum* and *B. longum* effectively utilize HMOs, whereas adult-type *Bifidobacteria* such as *B. adolescentis* is less efficient in utilizing HMOs (Makino, 2018). Eshaghia et al. (2017) argued that *B. longum* localizes in the infant's gut at the few first days after birth. This finding suggesting that a considerable number of *Bifidobacteria* isolates could pass through the infant newly developed gastrointestinal tract and be confined.

In short, *Bifidobacterium* Bb1B isolate is considered as an ideal probiotic for human consumption, because they can already effectively colonize the digestive tract of the host. *B. longum* is generally the most common and prevalent species found in breast milk samples and the digestive tract of infants and adults (Chaplin et al., 2015; Kolondam et al., 2020; Martin et al., 2016; Oki et al., 2018). Some studies have also recommended the *B. longum* as a probiotic strain with many health benefits (Sugahara et al., 2015; Wong et al., 2019) which considered safe to be added to food and beverage products. In the future, *Bifidobacterium longum* Bb1B can be applied for the production of functional food and beverages in the fields of research, industrial, and community service.

## CONCLUSION

This present study suggested the *Bifidobacterium longum* as the dominant strain of *Bifidobacterium* in the gut of less than one-month-old healthy infants



which has potential as a probiotic and is considered as ideal probiotic for human consumption because they can already effectively colonize the digestive tract of the host.

## ACKNOWLEDGMENTS

The authors thank all who have helped in conducting this research and Universitas Jenderal Soedirman for funding support through the Research Competency Improvement Grant - BLU 2018.

## REFERENCES

- Aloisio, I., Santini, C., Biavati, B., Dinelli, G., Cencič, A., & Chingwaru, W. (2012). Characterization of *Bifidobacterium* spp. strains for the treatment of enteric disorders in newborns. *Applied Microbiology and Biotechnology*, 96, 1561–1576.
- Attri, S., Mahajan, R., & Goel, G. (2018). Development and diversity of lactic acid-producing bacteria and bifidobacteria in healthy full-term Indian infants from Himachal Pradesh. *Intestine Research*, 16(4), 529-536.
- Benga, L., Peter, W., Benten, M., Engelhardt, E., Kohrer, K., Gougoula, C., & Sager, M. (2014). 16S ribosomal DNA sequence-based identification of bacteria in laboratory rodents: a practical approach in laboratory animal bacteriology diagnostics. *Laboratory Animals*, 48(4), 305-312.
- Chaplin, A.V., Efimov, B.A., Smeianov, V.V., Kafarskaia, L.I., Pikina, A.P., & Shkoporov, A.N. (2015). Intraspecies genomic diversity and long-term persistence of *Bifidobacterium longum*. *PLoS One*, 10(8), e0135658.
- Da-Silva, M.A.C., Cavalett, A., Spinner, A., Rosa, D.C., Jasper, R.B., Quecine, M.C., Bonatelli, M.L., Kleiner, A.P., Corção, G., & Lima, A.O.S. (2013). Phylogenetic identification of marine bacteria isolated from deep-sea sediments of the Eastern South Atlantic Ocean. *Springer Plus*, (2), 127.
- Devaraj, S., Hemarajata, P., & Versalovic, J. (2013). The human gut microbiome and body metabolism: implications for obesity and diabetes. *Clinical Chemistry*, 59, 617-628.
- Duranti, S., Lugli, G.A., Mancabelli, L., Armanini, F., Turroni, F., James, K., Ferreti, P., Gorfer, V., Ferrario, C., Milani, C., Mangifesta, M., Anzalone, R., Zolfo, M., Viappiani, A., Pasolli, E., Bariletti, I., Canto, R., Clementi, R., Cologna, M., Crifo, T., Cusumano, G., Fedi, S., Gottardi, S., Innamorati, C., Mase, C., Postai, D., Savio, D., Sofiati, M., Tateo, S., Pedrotti, A., Segata, N., Van Sinderen, D., & Ventura, M. (2017). Maternal inheritance of bifidobacterial communities and bifidophages in infants through vertical transmission. *Microbiome*, 5(66).
- Eshaghia, M., Bibalana, M.H., Rohanibe, M., Esghaeic, M., Masoumeh, Malihe, D., Mohammad, T., & Pourshafie, R. (2017). Bifidobacterium obtained from mother's milk and their infant stool: a comparative genotyping and antibacterial analysis. *Microbial Pathogenesis*, 111, 94-98.
- Gouba, N., Hien, Y.E., Guissou, M.L., Fonkou, M.D.M., Traore, Y., & Tarnagda, Z. (2019). Digestive tract mycobiota and microbiota and the effects on the immune system. *Human Microbiome Journal*, 12, 1000056.
- Kasi, P.D., Ariandi, & Tenriawaru, E.P. (2019). Identifikasi bakteri asam laktat dari limbah cair sagu dengan gen 16S rRNA. *Majalah Ilmiah Biologi Biosfera*, 36(1), 35-40.
- Kolondam, B.J. (2020). Evaluasi deteksi berbasis PCR untuk bakteri *Bifidobacterium longum* dalam sampel feses bayi dari Kota Manado. *Jurnal Ilmiah Sains*, 20(1), 18-25.
- Kusharyati, D.F., Pramono, H., Ryandini, D., Manshur, T.A., Dewi, M.A., Khatimah, K., & Rovik, A. (2020). Bifidobacterium from infant stool: the diversity and potential screening. *Biodiversitas*, 21(6), 2506-2513.
- Lawson, M.A.E., O'Neill, I.J., Kujawska, M., Javvadi, S.G., Wijeyesekara, A., Flegg, Z., Chalklen, L., & Hall, L.J. (2020). Breast milk-derived human milk oligosaccharides promote Bifidobacterium interactions within a single ecosystem. *ISME Journal*, 14, 635-648.
- Liu, W.J., Chen, Y.F., Kwok, L.Y., Li, M.H., Sun, T., Sun, C.L., Wang, X.N., Dan, T., Menghebilige, Zhang, H.P., & Sun, T.S. (2013). Preliminary selection for potential probiotic bifidobacterium isolated from subjects of different Chinese ethnic groups and evaluation of their fermentation and storage characteristics in bovine milk. *Journal of Dairy Science*, 96, 6807-6817.
- Lomasney, K.W., Cryan, J.F., & Hyland, N.P. (2014). Converging effects of a Bifidobacterium and Lactobacillus probiotic strain on mouse intestinal physiology. *American Journal of Gastrointestinal and Liver Physiology*, 307, G241-G247.
- Makino, H. (2018). Bifidobacteria strains in the intestines of newborns originate from their mothers. *Bioscience of Microbiota, Food and Health*, 37(4), 79-85.
- Malviya, N., Yadav, A.K., Yandigeri, M.S., & Arora, D.K. (2011). Diversity of culturable streptomycetes from wheat cropping system of fertile regions of Indo-Gangetic Plains, India. *World Journal of Microbiology and Biotechnology*, 27, 1593-1602.



- Mariat, D., Firmesse, O., Levenez, F., Guimaraes, V.D., Sokol, H., & Dore, J. (2019). The Firmicutes/Bacteroides ratio of the human microbiota changes with age. *BioMed Central Microbiology*, 9, 123.
- Martin, R., Makino, H., Yavuz, A., Ben-Amor, K., Roelofs, M., Ishikawa, E., Kubota, H., Swinkels, S., Sakai, T., Oishi, K., Kushiro, A., & Knol, J. (2016). Early-life events, including mode of delivery and type of feeding, siblings, and gender, shape the developing gut microbiota. *PLoS One*, 11, e0158498.
- Milani, C., Hevia, A., Foroni, E., Duranti, S., Turrone, F., Lugli, G.A., Sanchez, B., Martin, R., Gueimonde, M., van-Sinderen, D., Margolles, A., & Ventura, M. (2013). Assessing the fecal microbiota: an optimized ion torrent 16S rRNA gene-based analysis protocol. *PLoS One*, 8(7), e68739.
- Morita, H., Nakano, A., Onoda, H., Toh, H., Oshima, K., Takami, H., Murakami, M., Fukuda, S., Takizawa, T., Kuwahara, T., Ohno, H., Tanabe, S., & Hattori, M. (2011). *Bifidobacterium kashiwanohense* sp. nov., isolated from healthy infant feces. *International Journal of Systematic and Evolutionary Microbiology*, 61, 2610-2615.
- Murphy, K., Curley, D., O'Callaghan, T.F., O'Shea C-A., Dempsey, E.M., O'Toole, P.W., Ross, R.P., Ryan, A., & Stanton, C. (2017). The composition of human milk and infant fecal microbiota over the first three months of life: a pilot study. *Scientific Reports*, 7, 40597.
- Nagpal, R., Mainali, R., Ahmadi, S., Wang, S., Singh, R., Kavanagh, K., & Yadav, H. (2018). Gut microbiome and aging: physiological and mechanistic insights. *Nutrition and Healthy Aging*, 4(4), 267-285.
- Narayanan, R. & Subramonian, B.S. (2015). Effect of prebiotics on bifidobacterial species isolated from infant feces. *Indian Journal of Traditional Knowledge*, 14(2), 285-289.
- Oishi, K., Martin, R., Ben-Amor, K., Knol, J., & Tanaka, R. (2013). Mother-to-infant transmission of intestinal Bifidobacteria strains has an impact on the early development of vaginally delivered infant's microbiota. *PLoS One*, 8(11), e78331.
- Oki, K., Akiyama, T., Matsuda, K., Gawad, A., Makino, H., Ishikawa, E., Oishi, K., Kushiro, A., & Fujimoto, J. (2018). Long-term colonization exceeding six years from early infancy of *Bifidobacterium longum* subsp. *longum* in the human gut. *BioMed Central Microbiology*, 18(209), 1-13.
- Pacheco, A.R., Barile, D., Underwood, M.A., & Mills, D.A. (2015). The impact of milk glycobiome on the neonate gut microbiota. *Annual Review of Animal Bioscience*, 16(3), 419-445.
- Roger, L.C., Costabile, A., Holland, D.T., Hoyle, L., & McCartney, A.L. (2010). Examination of fecal Bifidobacterium populations in breast- and formula-fed infants during the first 18 months of life. *Microbiology*, 156, 3329-3341.
- Russell, D.A., Ross, R.P., Fitzgerald, G.F., & Stanton, C. (2012). Metabolic activities and probiotic potential of bifidobacteria. *International Journal of Food Microbiology*, 149, 88-105.
- Ryandini, D., Pramono, H., & Sukanto. (2018). Antibacterial activity of Streptomyces SAE4034 isolated from the Segara Anakan mangrove rhizosphere against antibiotic-resistant bacteria. *Biosaintifika*, 10(1), 117-124.
- Sim, K., Cox, M.J., Wopereis, H., Martin, R., Knol, J., Li, M.-S., Cookson, W.O., Moffatt, M.F., & Kroll, J.S. (2012). Improved detection of bifidobacteria with optimized 16S rRNA-gene based pyrosequencing. *PLoS One*, 7, e32543.
- Sirilun, S., Takahashi, H., Boonyaritichakji, S., Chaiyasuti, C., Lertruangpanya, P., Koga, Y., & Mikami, K. (2015). Impact of maternal bifidobacteria and the mode of delivery on bifidobacterium microbiota in infants. *Beneficial Microbes*, 6(6), 767-774.
- Sornplang, P. & Piyadeatsoontorn, S. (2016). Probiotic isolates from unconventional sources: a review. *Journal of Animal Science and Technology*, 58, 26-37.
- Sugahara, H., Odamaki, T., Fukuda, S., Kato, T., Xiao, J.-Z., Abe, F., Kikuchi, J., & Ohno, H. (2015). Probiotic *Bifidobacterium longum* alters gut luminal metabolism through modification of the gut microbial community. *Scientific Reports*, 5, 13548.
- Sun, Z., Zhang, W., Guo, C., Yang, X., Liu, W., & Wu, Y. (2015). Comparative genomic analysis of 45 type strains of the genus Bifidobacterium: a snapshot of its genetic diversity and evolution. *PLoS One*, 10(2), e0117912.
- Walker, A.W., Martin, J.C., Scott, P., Parkhill, J., Flint, H.J., & Scott, K.P. (2015). 16S rRNA gene-based profiling of the human infant gut microbiota is strongly influenced by sample processing and PCR primer choice. *Microbiome*, 1-11.
- Wong, F.W. & Santiago, M. (2017). Microbial approaches for targeting antibiotic-resistant bacteria. *Microbial Biotechnology*, 10(5), 1047-1053.
- Wong, C.B., Odamaki, T., & Xiao, J.-Z. (2019). Beneficial effects of *Bifidobacterium longum* subsp. *longum* BB536 on human health: modulation of the gut microbiome as the principal action. *Journal of Functional Foods*, 54, 506-519.