



DENTIKA: DENTAL JOURNAL



DENTIKA: DENTAL JOURNAL (DENTIKA) is a fully open access journal, providing authors with a distinctive new service offering continuous publication of original research across a broad spectrum of Dental scientific disciplines and sub-specialties. We publish under TALENTA Publisher, Universitas Sumatera Utara, managed by Faculty of Dentistry, Universitas Sumatera Utara. Before the management of TALENTA Publisher and the upgrade to OJS 3, our online Journals were originally posted on: [Jurnal USU](#). We aim to circulate high quality scientific writings in the world of Dentistry in the form of state-of-art papers in fundamental theory, experiments and simulation, as well as applications, with a systematic proposed method, sufficient review on previous works, expanded discussion and concise conclusion.

As our commitment to the advancement of science and technology, Dentika Dental Journal follows the open access policy that allows the published articles freely available online without any subscription.

These articles are indexed by Indonesian Publication Index (Garuda Portal) and [Google Scholar](#). DENTIKA strives to be a means of periodic, accredited, national scientific publications or reputable international publications through printed and online publications.

TEMPLATES

SUBMISSION GUIDELINES

COPYRIGHT TRANSFER FORM

SUBMISSION GUIDELINES

COPYRIGHT TRANSFER FORM

Journal title	DENTIKA: Dental Journal
Abbreviation	Dentika Dental J.
Initial	DENTIKA
Frequency	2 (two) issues per year
ISSN (Print)	1693-671X
ISSN (Online)	2615-854X
Digital Object Identifier (DOI)	10.32734 (Member of Crossref)
Editor-In-Chief	Wilda Hafni Lubis
Managing Editor	Pocut Astari and Zahra Kharina Nasution
Publisher	TALENTA Publisher, Universitas Sumatera Utara
Citation Analysis	Google Scholar
Visitor Analysis	-

Publisher:



Access Policy:



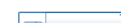
Indexed by:



Accredited by:



Visitor:



View My Stats

Current Issue



Current Issue

Vol. 25 No. 1 (2022): Dentika Dental Journal



In press

Published: 2022-05-13

[Home](#) / [Indexing](#)

Indexing

Articles published in Dentika Dental Journal (DENTIKA, e-ISSN: [2615-854X](#), p-ISSN: [1693-671X](#)) have appeared in the following indexes:

- [Garuda \(Garda Rujukan Digital\) Kemenristekdikti RI](#)
- [Google Scholar](#)
- [Dimension](#)

Publisher:



Access Policy:

OPEN  ACCESS

Indexed by:

 Dimensions

 GARUDA

 Google
Scholar

Accredited by:



[Home](#) / [Focus and Scope](#)

Focus and Scope

dentika DENTAL JOURNAL publishes articles and scientific work from **Researches, Case Reports** and **Literature Reviews** in Dentistry and Dental Science. The scopes are varied from:

Dental Surgery

Dental Forensics

Oral Biology

Oral Medicine

Dental Public Health and Preventive Dentistry

Paediatric Dentistry

Dental Materials and Technology

Conservative Dentistry

Orthodontics

Periodontics

Prosthodontics

Dental Radiology.

Publisher:



Access Policy:

OPEN  ACCESS

Indexed by:

 Dimensions

 GARUDA

 Google
Scholar

Accredited by:



Visitor:



Home / Editorial Team

Editorial Team

CHIEF EDITOR

Wilda Hafni Lubis (Universitas Sumatera Utara)

UNIVERSITY PAGE | SINTA | ORCID | SCOPUS | GOOGLE SCHOLAR

SECTION EDITOR

Pitu Wulandari (Universitas Sumatera Utara)

UNIVERSITY PAGE | SINTA | ORCID | SCOPUS | GOOGLE SCHOLAR

MANAGING EDITORS

Nurdiana (Universitas Sumatera Utara)

UNIVERSITY PAGE | SINTA | GOOGLE SCHOLAR

Zahra Kharina Nasution (Universitas Sumatera Utara)

Pocut Astari (Universitas Sumatera Utara)

SINTA | GOOGLE SCHOLAR

Marisi (Universitas Sumatera Utara)

DEEP REVIEWERS PEER REVIEWERS

INTERNATIONAL

Taizo Hamada (Hiroshima, Japan)

SCOPUS

Wan Mohammad Nasir Bin Wan Othman (Universiti Sains Islam Malaysia, Malaysia)

UNIVERSITY PAGE | SCOPUS | GOOGLE SCHOLAR

Thanaphum Osathanon (Chulalongkorn University, Thailand)

UNIVERSITY PAGE | ORCID | SCOPUS

Anara Zhumadilova (Nazarbayev University, Kazakhstan)

UNIVERSITY PAGE | SCOPUS | GOOGLE SCHOLAR

NATIONAL

Hanna Bachtiar-Iskandar (Universitas Indonesia)

UNIVERSITY PAGE | SINTA | SCOPUS | GOOGLE SCHOLAR

Wiwiek Poedjastoeti (Universitas Trisakti)

UNIVERSITY PAGE | SINTA | SCOPUS | GOOGLE SCHOLAR

Carolina Damayanti Marpaung (Universitas Trisakti)

UNIVERSITY PAGE | SINTA | SCOPUS | GOOGLE SCHOLAR | ORCID

Ardo Sabir (Universitas Hasanuddin)

UNIVERSITY PAGE | SCOPUS | GOOGLE SCHOLAR

Muhammad Harun Achmad (Universitas Hasanuddin)

UNIVERSITY PAGE | SINTA | SCOPUS | GOOGLE SCHOLAR

Harmas Yazid Yusuf (Universitas Padjajaran)

UNIVERSITY PAGE | SINTA | SCOPUS | GOOGLE SCHOLAR

Endah Mardiaty (Universitas Padjadjaran)

UNIVERSITY PAGE | SINTA | SCOPUS | GOOGLE SCHOLAR

Suhardjo (Universitas Padjajaran, Indonesia)

UNIVERSITY PAGE | SINTA | SCOPUS | GOOGLE SCHOLAR

Irna Sufiawati (Universitas Padjadjaran)

UNIVERSITY PAGE | SINTA | SCOPUS | GOOGLE SCHOLAR

Publisher:



Access Policy:



Indexed by:



Accredited by:



Visitor:



View My Stats

Current Issue

RTOM 1.0

RSC 2.0

RSC 1.0

Vol. 24 No. 2 (2021): Dentika Dental Journal



Published: 2021-12-03

Articles



Streptococcus mutans Antibacterial Activity of 0.1% Lysozyme Tooth Paste as an Alternative for Children Below 3 Years Old in Preventing Early Childhood Caries (ECC) (Experimental Laboratory Study)

Aktivitas Antibakteri Streptococcus mutans dari Pasta Gigi Lisozim 0,1% Sebagai Alternatif Untuk Anak Di Bawah 3 Tahun Dalam Mencegah Karies Anak Usia Dini (PAUD) (Studi Laboratorium Eksperimental)

Essie Octiara, Heriandi Sutadi, Yahwardiah Siregar, Ameta Primasari

28-34



The Prevalence of Surgical Wound Infection In Post-Mandibular Resection of Ameloblastoma Patients

Prevalensi Infeksi Luka Operasi Pasca Reseksi Mandibula Pada Pasien Ameloblastoma

Dani Ginanjar, Abel Tasman Yuza, Winarno Priyanto

35-38



Knowledge Level of Clinical Dental Students In Faculty of Dentistry, Universitas Sumatera Utara Regarding the Anesthetic Technique of Inferior Alveolar Nerve Block

Tingkat Pengetahuan Mahasiswa Kepaniteraan Klinik Fkg Usu Mengenai Teknik Anestesi Blok Nervus Alveolaris Inferior Dan Penatalaksanaan Kegagalannya Pada Perawatan Gigi Mandibula

39-47



39-47



The Effect Of Ethanol Extract From Lingzhi Fungi (Ganoderma Lucidum) Cianjur Isolate On Syndecan-1 Expressions In Kb CCL17 Oral Cancer Cell

Efek Ekstrak Ethanol Dari Jamur Lingzhi (Ganoderma Lucidum) Isolat Cianjur Terhadap Ekspresi Syndecan-1 Pada Sel Kanker Rongga Mulut Kb Ccl-17

Fadli Ashar, Haris Budi Widodo, Daniel Joko Wahyono, Nuniek Ina Ratnaningtyas, Gita Nawangtantrini, Dody Novrial, Irfan Dwiandhono

48-54



Case Report



Multiple Clinical Findings on The Tongue: Variants of Normal or Pathologic Condition? (A Case Report)

Temuan Klinis Multipel pada Lidah: Variasi Normal atau Kondisi Patologis? (Sebuah Laporan Kasus)

Yurina Alhayu, Febrina Rahmayanti, Ambar Kusuma Astuti

55-59



Publisher:



Access Policy:



Indexed by:



Accredited by:



Visitor:



View My Stats



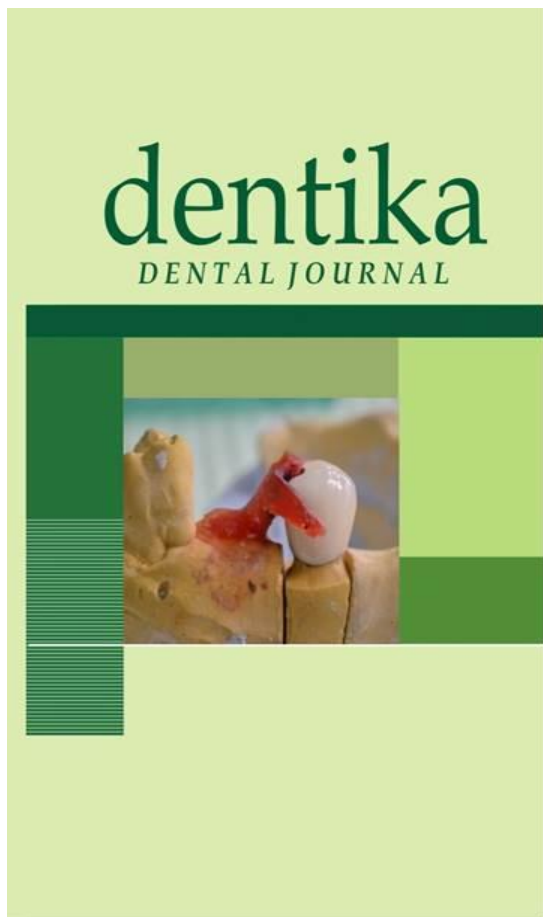
View My Stats

Current Issue

ATOM 1.0

RSS 2.0

RSS 1.0



Articles



Streptococcus mutans Antibacterial Activity of 0.1% Lysozyme Tooth Paste as an Alternative for Children Below 3 Years Old In Preventing Early Childhood Caries (ECC) (Experimental Laboratory Study)

Aktivitas Antibakteri Streptococcus mutans dari Pasta Gigi Lisozim 0,1% Sebagai Alternatif Untuk Anak Di Bawah 3 Tahun Dalam Mencegah Karies Anak Usia Dini (PAUD) (Studi Laboratorium Eksperimental)

Essie Octiara, Herlandi Sutadi, Yahwardiah Siregar, Ameta Primasari

28-34



The Prevalence of Surgical Wound Infection In Post-Mandibular Resection of Ameloblastoma Patients

Prevalensi Infeksi Luka Operasi Pasca Reseksi Mandibula Pada Pasien Ameloblastoma

Dani Ginanjar, Abel Tasman Yuza, Winarno Priyanto

35-38



Knowledge Level of Clinical Dental Students In Faculty of Dentistry, Universitas Sumatera Utara Regarding the Anesthetic Technique of Inferior Alveolar Nerve Block

Tingkat Pengetahuan Mahasiswa Kepaniteraan Klinik Fkg Usu Mengenai Teknik Anestesi Blok Nervus Alveolaris Inferior Dan Penatalaksanaan Kegagalannya Pada Perawatan Gigi Mandibula

39-47



The Effect Of Ethanol Extract From Lingzhi Fungi (Ganoderma Lucidum) Cianjur Isolate On Syndecan-1 Expressions In Kb CCL17 Oral Cancer Cell

Efek Ekstrak Ethanol Dari Jamur Lingzhi (Ganoderma Lucidum) Isolat Cianjur Terhadap Ekspresi Syndecan-1 Pada Sel Kanker Rongga Mulut Kb Ccl-17

Fadli Ashar, Haris Budi Widodo, Daniel Joko Wahyono, Nuniek Ina Ratnaningtyas, Gita Nawangtantrini, Dody Novrial, Irfan Dwiandhono

48-54



dentika DENTAL JOURNAL

Home About People Issues Policies Submission Publication Ethics

Search

Home / Archives / Vol. 24 No. 2 (2021): Dentika Dental Journal / Articles

The Effect Of Ethanol Extract From Lingzhi Fungi (Ganoderma Lucidum) Cianjur Isolate On Syndecan-1 Expressions In Kb CCL17 Oral Cancer Cell

Efek Ekstrak Ethanol Dari Jamur Lingzhi (Ganoderma Lucidum) Isolat Cianjur Terhadap Ekspresi Syndecan-1 Pada Sel Kanker Rongga Mulut Kb Ccl-17

Fadli Ashar

Faculty of Medicine, Universitas Jenderal Soedirman

Haris Budi Widodo

Faculty of Medicine, Universitas Jenderal Soedirman

Daniel Joko Wahyono

Faculty of Medicine, Universitas Jenderal Soedirman

Nuniek Ina Ratnaningtyas

Faculty of Medicine, Universitas Jenderal Soedirman

Gita Nawangtantrini

Faculty of Medicine, Universitas Jenderal Soedirman

Dody Novrial

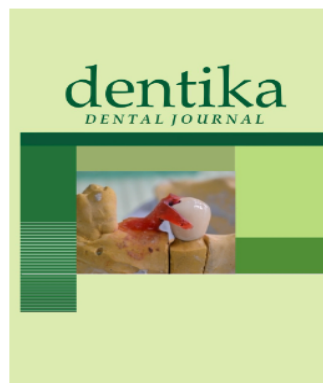
Faculty of Medicine, Universitas Jenderal Soedirman

Irfan Dwiandhono

Faculty of Medicine, Universitas Jenderal Soedirman

DOI: <https://doi.org/10.32734/dentika.v24i2.4189>

Keywords: Syndecan-1, oral squamous cell carcinoma, Ganoderma lucidum, KB CCL-17



Published

Publisher:



Access Policy:

OPEN ACCESS

Indexed by:



Accredited by:



Visitor:



DOI: <https://doi.org/10.32734/dentika.v24i2.4189>

Keywords: Syndecan-1, oral squamous cell carcinoma, Ganoderma lucidum, KB CCL-17

Abstract

Intercellular adhesion plays a role in cancer formation and protein has a key potential in maintaining cell adhesion, including syndecan-1. Meanwhile, oral cancer originates from the oral epithelium, which has an invasive and metastatic level. Its treatments involving chemotherapy and radiotherapy commonly leave unfavorable side effects, hence, suitable alternatives are needed. Natural ingredients are widely used as an alternative treatment for cancer, for example, *Ganoderma lucidum* (*G. lucidum*) which has anti-cancer and anti-angiogenic properties, induces apoptosis, stimulates an immune response, inhibits the degradation of Extracellular matrix (ECM), reduces inflammation, affects cell cycles, cytotoxic, and acts as an antioxidant. This study aims to determine the effect of ethanol extract from *Ganoderma lucidum* Cianjur isolate on syndecan-1 expression in KB CCL-17 oral cell cancer. This was an experimental study with a post-test only control group design, the treatment group used *G. lucidum* ethanol extract with a concentration of 2.12 µg/ml (P1), 4.24 µg/ml (P2), and 8.49 µg/ml (P3), while the positive control group used cisplatin with a concentration of 11.5 µg/ml (K1). In contrast, the negative control used aquadest (K0), while syndecan-1 expression was observed using the immunohistochemical examination. The highest syndecan-1 expansion rate was found in the treatment group with a concentration of 8.49 µg/ml. A significant difference was indicated by one-way ANOVA ($p < 0.05$) between K0 - K1, K0 - P1, K0 - P2, K0 - P3, K1 - P1, K1 - P2, K1 - P3, P1 - P2, as well as P1 and P3. The administration of ethanol extract from *G. lucidum* Cianjur isolate increases syndecan-1 expression in KB CCL-17 oral cell cancer.

Downloads

Download data is not yet available.

PDF

Published
2021-12-29

How to Cite

Ashar, F., Widodo, H. B., Wahyono, D. J., Ratnaningtyas, N. I., Nawangtantrini, G., Novrial, D., & Dwiandhono, I. (2021). The Effect Of Ethanol Extract From Lingzhi Fungi (*Ganoderma Lucidum*) Cianjur Isolate On Syndecan-1 Expressions In Kb CCL17 Oral Cancer Cell: Efek Ekstrak Ethanol Dari Jamur Lingzhi (*Ganoderma Lucidum*) Isolasi Cianjur Terhadap Ekspresi Syndecan-1 Pada Sel Kanker Rongga Mulut Kb Ccl-17. *Dentika: Dental Journal*, 24(2), 48-54.
<https://doi.org/10.32734/dentika.v24i2.4189>

More Citation Formats

Issue

[Vol. 24 No. 2 \(2021\): Dentika Dental Journal](#)

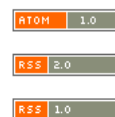
Section

Articles



StatCounter.com View My Stats

Current Issue



Journal Profile

Dentika Dental Journal

eISSN : 2615854X | pISSN : 1693671X

Health

Universitas Sumatera Utara



S4

Sinta Score



Indexed by GARUDA

11

H-Index

8

HS-Index

613

Citations

388

5 Year Citations

dentika
DENTAL JOURNAL

Penerbit:

Talenta

Website | Editor URL

Address:

Faculty of Dentistry Universitas Sumatera Utara Jl. Alumni
No. 2, Kampus USU Pd. Bulan Medan 20155, Sumatera
Utara - Indonesia
KOTA MEDAN

Email:

dentika_journal@usu.ac.id

Phone:

082175541122

Last Updated :

2022-06-12



Sinta Accreditations

Search..



1

2

3

4

5



Page 1 of 37 | Total Records : 362

Publications

Citation

HUBUNGAN PENDIDIKAN, PENGETAHUAN, DAN PERILAKU IBU TERHADAP STATUS KARIES GIGI BALITANYA: RELATIONSHIP BETWEEN EDUCATION, KNOWLEDGE, AND MOTHER'S BEHAVIOUR TOWARD DENTAL CARIES ...

L Natamiharja, NS Dewi

Dentika: Dental Journal 15 (1), 37-41, 2010

23

EFEK MENGUNYAH PERMEN KARET YANG MENGANDUNG SUKROSA, XYLITOL, PROBIOTIK TERHADAP KARAKTERISTIK SALIVA: EFFECT OF CHEWING GUM CONTAINING SUCROSE, XYLITOL AND PROBIOTIC TO SALIVA ...

M Rodian, MH Satri, E Rolleta

Dentika: Dental Journal 16 (1), 44-48, 2011

22

Pemakaian kontrasepsi pil dan suntik menaikkan pH dan volume saliva

J Handajani, RM Puspita, R Amelia

Dentika Dental Journal 15 (1), 1-5, 2010

17

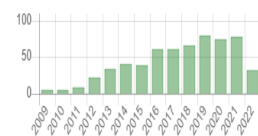
Profil Penyakit Periodontal Penduduk di Dua Kecamatan Kota Medan tahun 2004 Di Bandingkan dengan Kesehatan Mulut Tahun 2010(WHO)

N Situmorang

Universitas Sumatera Utara, 2004

15

Citation Statistics



Dentika Dental Journal

eISSN : 2615854X | pISSN : 1693671X

Health

Universitas Sumatera Utara



S4

Sinta Score

11

H-Index

613

Citations

2018

2019

2020

2021

2022

2023

2024

2025

2026

Sinta Accreditations

Search..



1

2

3

4

5



Page 1 of 37 | Total Records : 362

The Effect Of Ethanol Extract From Lingzhi Fungi (*Ganoderma Lucidum*) Cianjur Isolate On Syndecan-1 Expressions In Kb CCL17 Oral Cancer Cell

Efek Ekstrak Ethanol Dari Jamur Lingzhi (*Ganoderma Lucidum*) Isolat Cianjur Terhadap Ekspresi Syndecan-1 Pada Sel Kanker Rongga Mulut Kb Ccl-17

Fadli Ashar¹, Haris Budi Widodo², Daniel Joko Wahyono³, Nuniek Ina Ratnaningtyas⁴, Gita Nawangtantrini⁵, Dody Novrial⁵, Irfan Dwiandhono⁶

¹ Biomedical Sciences, Faculty of Medicine,
Universitas Jenderal Soedirman, Purwokerto, Indonesia

² Oral Biology Department, Faculty of Medicine,
Universitas Jenderal Soedirman, Purwokerto, Indonesia

³ Department of Molecular Genetics, Faculty of Biology,
Universitas Jenderal Soedirman, Purwokerto, Indonesia

⁴ Department of Microbiology, Faculty of Biology,
Universitas Jenderal Soedirman, Purwokerto, Indonesia

⁵ Anatomy Pathology Department, Faculty of Medicine,

⁶ Dentistry, Faculty of Medicine
Universitas Jenderal Soedirman, Purwokerto, Indonesia
Universitas Jenderal Soedirman, Purwokerto, Indonesia

Jl. Dr. Soeparno, Kampus Karangwangkal Gedung E,
Karang Bawang, Grendeng, Kec. Purwokerto Utara,
Kabupaten Banyumas, Jawa Tengah 53122, Indonesia
Email: pustaka.fadliashar5@gmail.com

Abstract

Intercellular adhesion plays a role in cancer formation and protein has a key potential in maintaining cell adhesion, including syndecan-1. Meanwhile, *oral cancer* originates from the oral epithelium, which has an invasive and metastatic level. Its treatments involving chemotherapy and radiotherapy commonly leave unfavorable side effects, hence, suitable alternatives are needed. Natural ingredients are widely used as an alternative treatment for cancer, for example, *Ganoderma lucidum* (*G. lucidum*) which has anti-cancer and anti-angiogenic properties, induces apoptosis, stimulates an immune response, inhibits the degradation of Extracellular matrix (ECM), reduces inflammation, affects cell cycles, cytotoxic, and acts as an antioxidant. This study aims to determine the effect of ethanol extract from *Ganoderma lucidum* Cianjur isolate on syndecan-1 expression in KB CCL-17 oral cell cancer. This was an experimental study with a post-test only control group design, the treatment group used *G. lucidum* ethanol extract with a concentration of 2.12 µg/ml (P1), 4.24 µg/ml (P2), and 8.49 µg/ml (P3), while the positive control group used cisplatin with a concentration of 11.5 µg/ml (K1). In contrast, the negative control used aquadest (K0), while syndecan-1 expression was observed using the immunohistochemical examination. The highest syndecan-1 expansion rate was found in the treatment group with a concentration of 8.49 µg/ml. A significant difference was indicated by one-way ANOVA ($p < 0.05$) between K0 - K1, K0 - P1, K0 - P2, K0 - P3, K1 - P1, K1 - P2, K1 - P3, P1 - P2, as well as P1 and P3. The administration of ethanol extract from *G. lucidum* Cianjur isolate increases syndecan-1 expression in KB CCL-17 oral cell cancer.

Keywords: Syndecan-1, oral squamous cell carcinoma, *Ganoderma lucidum*, KB CCL-17

Abstrak

Adhesi sel antar sel memainkan peran terhadap pembentukan kanker. Protein yang berperan dalam mempertahankan adhesi sel adalah Syndecan-1. Kanker rongga mulut berasal dari epitel rongga mulut yang memiliki tingkat invasif dan metastasis. Perawatan kanker yang mengalami invasif dan metastasis dilakukan perawatan kemoterapi dan radioterapi, namun efek dari perawatan tersebut memiliki efek samping yang tidak menguntungkan, untuk itu dibutuhkan perawatan

alternatif. Pengobatan menggunakan bahan alam mulai digunakan sebagai alternatif perawatan kanker. Salah satu bahan alam sebagai anti kanker adalah *Ganoderma lucidum* (*G. lucidum*) yang memiliki kemampuan anti angiogeneis, menginduksi apoptosis, menstimulasi respon imunitas, menghambat degradasi *Ekstraselular matrix* (ECM), mengurangi inflamasi, mempengaruhi siklus sel, kemampuan sitotoksik dan sebagai antioksidan. Mengetahui ekspresi syndecan-1 yang diberikan ekstrak etanol *Ganoderma lucidum* isolat Cianjur pada kultur sel rongga mulut KB CCL-17. Desain penelitian yang digunakan adalah *post-test only with control group design*. Kelompok perlakuan menggunakan ekstrak etanol *G. lucidum* dengan konsentrasi 2,12 µg/ml (P1), 4,24 µg/ml (P2) dan 8,49 µg/ml (P3). Kelompok kontrol positif menggunakan Cisplatin dengan konsentrasi 11,5 µg/ml (K1) dan Kelompok kontrol negatif menggunakan aquabidest (K0). Ekspresi syndecan-1 diamati dengan pemeriksaan imunohistokimia. Rerata ekspresi syndecan-1 tertinggi pada kelompok perlakuan dengan konsentrasi ekstrak etanol *G. lucidum* konsentrasi 8,49 µg/ml. Perbedaan signifikan ditunjukkan menggunakan analisis one way ANOVA ($p < 0,05$) antara K0 dengan K1, K0 dengan P1, K0 dengan P2, K0 dengan P3, K1 dengan P2, K1 dengan P3, P1 dengan P2 dan P1 dengan P3. Terdapat peningkatan jumlah pada ekspresi syndecan-1 yang diberikan ekstrak etanol *G. lucidum* isolat Cianjur pada kultur sel rongga mulut (KB CCL-17)

Kata kunci: *Syndecan-1, Immunohistokimia oral squamous cell carcinoma, Ganoderma lucidum, KB CCL-17*

INTRODUCTION

Oral cancer had an incidence of 354,864 cases in 2018, with a mortality rate of 177,384.¹ The increased incidence is influenced by poor prognosis, low survival rates, and poor radiotherapy treatment.² Besides, cancer has an invasive and metastatic ability, which accounts for 90% of the deaths. Protein and gene expression are used to predict the invasiveness and metastasis, hence, they are used as a reference in determining tumor prognosis.³

Syndecan-1 is commonly applied as a diagnostic standard biomarker by analyzing the number of expressions which often decrease due to the down regulation mechanism of cancer.⁴ Cancers with a decreased expression of syndecan-1 are commonly found in the lungs, kidneys, as well as head and neck.⁵

Cancer treatment uses surgical therapy combined with radiotherapy and/or chemotherapy, but these treatments have side effects on the patients.^{5,7} Therefore, suitable and safe alternatives such as natural ingredients are needed to minimize the side effects. *Ganoderma lucidum* (*G. lucidum*) is a fungus that is cytotoxic, has anti-cancer properties by inducing apoptosis, suppressing invasive cancer cells, regulating key signaling molecules,⁸ inhibiting progressive cell cycles, and suppressing angiogenesis.^{8,9}

Studies on the effect of *G. lucidum* Cianjur ethanol extract and Syndecan-1 expression on KB CCL-17 oral cancer cell has not been conducted. Therefore, this study aims to determine the potential of this natural ingredient in inhibiting the development of oral cancer.

MATERIALS AND METHODS

This study used a post-test group-only design with a purely experimental approach. The treatment group was given *G. lucidum* ethanol extract with a concentration of 2.12, 4.24, and 8.49 µg/ml, while the positive control group was treated using cisplatin at a concentration of 11.5 µg/ml and the negative control was administered with aquadest. Each treatment and control was repeated four times, while the *G. lucidum* fungus used in the study was obtained from the CV Asa Agro Corporation. It was harvested after four months of planting, and three months after the fruit body sprung out. The fungus lives in the lowlands with a temperature of 30°C, humidity of approximately 80%, and a pH of 7. It was collected in September 2019 and the part used was 300 grams thinly sliced fruiting body, which were placed into an oven of 70°C for 2 hours for drying. The extract method used was maceration with 96% ethanol solvent. The ratio of solvent to powder was 5:5 with 1,500 ml of ethanol containing 300 grams of powder. The mixture was stirred and tightly closed with aluminum foil, left for 3x24 hours by stirring, and filtered every day.

KB CCL-17 cancer cells obtained from ATCC with epithelial morphology were taken from liquid nitrogen tanks and then diluted with water baths at 37°C. The cells were inserted into centrifuge tubes containing 10 mL DMEM-serum medium and centrifuged within 10 minutes at 1200 rpm. The supernatant was separated between sediment and liquid, while the precipitate formed along with DMEM, was kept for 20 minutes, then the centrifuge was performed at 1200 rpm for 10 minutes. Furthermore,

the next suspension was placed into Tissue Culture Flask (TCF) with a growth medium containing 20% FBS and then viewed under an in-verted microscope. Living cells appeared round, glowing, and clear. The TCF was incubated in an incubator at 37°C and 5% CO₂ with a non-tense lid, while the cells were given treatment when 80% con-fluent occurred, which was marked with a yello-wing medium. Moreover, the cells were treated with the extracts and incubated for 24 hours on a 24 well microplate. They were further washed with 500 µL Phosphate buffer saline (PBS), 7% ethanol and 3% hydrogen peroxide at 100 µL, and kept for 10 minutes. The solution was then discarded with a micropipette, and the coverslip was washed with 500 µL PBS. PBS was taken with a 1 mL micro-pipette and transferred to a glass preparation. Pre-diluted blocking serum of 100 µL was dropped and kept for 10 minutes, then, an immunohistochemistry examination was performed to observe syndecan-1 expressions.

Subsequently, data were tabulated and tested for normality by Shapiro-Wilk, then, the analysis was performed using the one-way ANOVA test. When the data is normally distributed with a confidence level of 95% ($p < 0.05$), a post-hoc Least Significance Difference (LSD) test was performed to determine the presence of significant differences between the groups.

RESULTS

Immunohistochemical observations were performed on 10 random Microscope fields of view with a magnification of 400 times. The results showed positive brown Syndecan-1 on cytoplasm and negative with no staining. The syndecan-1 ex-pression on immunohistochemical examination is shown in Figure 1.

The analysis results of Syndecan-1 expression in oral cancer KB CCL-17 culture are shown in Table 1, shows the mean of syndecan-1 expression in the KB CCL-17 oral cancer cell culture from each group. Syndecan-1 expression was mostly observed in the treatment group at a concentration of 8.49 µg/ml, with a mean of 34.59%. In contrast, the smallest expression was found in the non-treatment group with a mean of 1.51%. Based on the results, the mean of syndecan-1 expression in the oral cancer cell culture with ethanol extract increased proportionally with the increasing concentration.

After the mean was obtained, statistic tests were performed, including normality test using Shapiro-Wilk and homogeneity using the Levene test, then the one-way ANOVA was used to analyze the data. The normality test showed a significance value of

0.125, while Shapiro-Wilk results showed that the data were normally distributed with $p > 0.05$. Furthermore, the homogeneity test obtained a significance value of 0.233 after the data were transformed. A value of $p > 0.05$ indicates homogeneity, hence, the data were used.

The one-way ANOVA parametric statistical test requires that data have normal distribution and homogeneity. It was used to analyze differences in syndecan-1 expression between groups and treatments. Table 2 depicts the test results.

Based on the results, the expression of syndecan-1 in oral cancer cell KB-CCL-17 cultures between the non-treatment group, as well as others treated with cisplatin, and *G.lucidum* ethanol extract of 2.12 µg/ml, 4.24 µg/ml and 8.49 µg/ml had significant differences with a value of 0.000 ($p < 0.05$). Furthermore, there was a significant difference in the one-way ANOVA parametric test, while the LSD test was conducted to identify significant differences between the groups. Table 3 depicts the LSD parametric test results.

The LSD parametric test results in Table 3 showed that there were differences in the expression of syndecan-1 between each group, except the P2 and P3 groups. The difference was categorized as significant when the p-value is < 0.05 . The significance value of the P2 and P3 groups was 0.40.

DISCUSSION

Based on the results, there were differences between the groups without treatment, as well as cisplatin, *G. lucidum* ethanol extract at 2.12 µg/ml (P1), 4.24 µg/ml (P2), and 8.49 µg/ml (P3). Further tests using LSD showed that there were significant differences in the expression of syndecan-1 between the non-treatment, cisplatin, and treatment groups of P1, P2, P3. Ethanol extract of *G. lucidum* increased the syndecan-1 expression in oral cancer cell KB CCL-17. Meanwhile, the expression is related to cell growth regulation, pro-liferation, the interaction between heparin and growth factor groups, angiogenesis induction, growth promotion, tumor progression, and contributes directly to invasive and metastatic abilities in malignant tumors¹⁰.

A correlation between metastases in invasive ductal carcinoma and the number of syndecan-1 expressions in primary tumors was found in previous studies. This occurred because syndecan-1 is expressed in more than 90% of epithelium tumors. The high expression is related to the maintenance of epithelial cell morphology and increasing the interaction of cell adhesion with matrix components. Aside from maintaining cell adhesion as a physio-

logical function, syndecan-1 also regulates pathological processes, such as invasive tumor cells, angiogenesis, and metastasis^{10,11}

Based on the above data, the lowest mean of syndecan-1 expression was found in the group without treatment. This is because the expression is reduced in epithelial tumors in relation to the prognosis as well as due to an increase in MMP-9 which has opposite effects with syndecan-1, hence, a decrease in MMP-9 expression increases the syndecan-1 expression¹³

Syndecan-1 expression in ameloblastoma shows that Desmoplastic Ameloblastoma has a smaller number compared to other types.¹⁴ Multicystic types which have invasive properties from weak to strong are follicular, akantomatos, granular, plexiform, and desmoplastic types, respectively.¹⁶ Furthermore, in odontogenic keratocyst, unicystic ameloblastoma, and dentigerous cyst, low syndecan-1 expression increases the invasive and destructive ability of neoplastic cells in unicystic ameloblastoma and extends to surrounding tissues.¹⁶ The mean of expression in epithelial tissues with ameloblastoma showed a decrease of 26.3%, keratocystic odontogenic tumor (KCOT) 92.3%, and dentigerous cyst 100%. There was an association with cell differentiation and invasive ability into deeper tissues on malignancy. Al Otaibi, *et al.* found that the mean of syndecan-1 expression in normal cells was more than mild, moderate, and severe dysplasia in the oral cancer cell, but there was no significant difference between tumor grades.^{15, 18}

Syndecan-1 also increases in human fibrosarcoma cell line HT-1080. It stimulates malignancy by increasing proliferation, metastatic potential, and migration ability. Overexpression of the branch bypasses the ectodomain, but it has amino acids in the juxta-membrane that promote proliferation and chemotaxis. The ectodomain increases tumor cell proliferation by the migratory ability of syndecan-1, which is enhanced by syndecan-2. Increased syndecan-1 expression triggers IGF1R activation and elevates Ets-1 proliferation. Moreover, syndecan-2 transfection with an upregulated mechanism increases the chemotaxis migration of HT-1080 cells to the ECM protein. The proliferation of HT-1080 cells occurs due to hyper-phosphorylation of Rb (retinoblastoma) by the CDK2 (cyclin-dependent kinase 2) -cyclin E1 complex. This process is also stimulated by syndecan-1, hence, increasing its expression also raises syndecan-2.^{17, 18}

Increased expression of syndecan-1 reduces the ability of cell proliferation by prolonging G1 and S phases in the cell cycle and retarded migration. The results show that syndecan-1 work simultaneously in

inhibiting the motility and cycle of mesenchymal cells that are not present in the ectodomain, hence, it has a dual role.¹⁷

There was no significant difference in the mean of syndecan-1 expression in the P2 and P3 treatment groups. In other words, *G. lucidum* ethanol extract of 4.24 µg/ml and 8.49 µg/ml had a comparable ability to increase syndecan-1 expression. Based on the LSD parametric test, there was a significant difference in the expression between P1 and P3 groups, as well as between P2 and P3 groups. These results showed that the ethanol extract with a concentration of 4.24 µg/ml and 8.49 µg/ml was stronger against the increased syndecan-1 expression compared to 2.12 µg/ml.

The treatment groups, as well as negative and positive controls, had syndecan-1 below the normal value which is greater than 66%.¹⁹ Moreover, there was a significant difference in the syndecan-1 expression in the K1 group (cisplatin) with P2 as well as the K1 Group with P3. These results indicate that the effectiveness of *G. lucidum* ethanol extract was higher than cisplatin as a chemotherapy agent.

Decreased expression of more than 80% of oral cancer is a risk factor for recurrence and death after 24 months of surgery, hence, syndecan-1 in the stroma is a reliable indicator of oral cancer prognosis. The increased expression associated with cytotoxic treatment shows clear predictive factors and a good prognosis in oral cancer.²⁰ Furthermore, the loss of syndecan-1 in breast cancer causes reduced metastasis in the brain, therefore, when the expression increases, the potential risk of metastasis to the brain is elevated. Also, the loss of syndecan-1 triggers changes in breast cancer cells to secrete cytokines/chemokines that affect BBB (Blood-brain barrier). The cytokines / chemokines regulated by syndecan-1 are IL-8, IL-6, and IL-34. Altogether, they influence the integrity and transmigration of BBB mediated by CCL5, ICAM-1, IL-6, IL-8, and GM-CSF. The syndecan-1 expression on fibroblast stroma and endothelial cells enhances growth, angiogenesis, and forms a microenvironment that favors invasive breast cancer²¹. Syndecan-1 expression in fibroblast stroma is needed to perform metastasis in 4T1 breast cancer mice.²²

Nevertheless, the expression by some cancers is not always a risk factor for increasing metastasis to the brain. Prostate cancer characterized by an increased syndecan-1 expression has a low incidence of metastasis to the brain namely 0.2-2%. The syndecan-1 expression also increases in lung cancer, but the presence of a correlation with a good or poor prognosis is unclear.²³

These results indicate that the ethanol extract of *G. Lucidum* effectively increases the number of syn-

decan-1 expressions, therefore, *G. Lucidum* needs to be developed as a potential anti-cancer agent to suppress the invasive and metastatic levels of oral cancer. In conclusion, the administration of ethanol extract from *G. lucidum* Cianjur isolate increases syndecan-1 expression in KB CCL-17 oral cancer cells.

ACKNOWLEDGEMENTS

The authors are grateful to the Dean of the Faculty of Medicine in Jenderal Soedirman University for the

study fund assistance, the Institute for Research and Community Service (LPPM) of Jenderal Soedirman University for the grants through the Dosen Pemula Research Funds 2018 Batch II. They are also grateful to the Microbiology Laboratory in the Faculty of Biology, Integrated Training and Testing Laboratory (LPPT) Unit III of Gadjah Mada University, and Anatomy Pathology Laboratory of Dr. Sardjito Hospital Yogyakarta for the facilities provided.

TABLES

Table1. Analysis Results of Syndecan-1 Expression in oral cancer cell KB CCL-17 Culture.

No	Group	Mean (%)± SD
1	Without Treatment	1.51 ± 0.52
2	Cisplatin 11.5 µg/ml	25.53 ± 2.45
3	Ethanol Extract of <i>G.lucidum</i> – Concentration of 2.12 µg/ml	10.77 ± 1.33
4	Ethanol Extract of <i>G.lucidum</i> – Concentration of 4.24 µg/ml	32.29 ± 6.05
5	Ethanol Extract of <i>G.lucidum</i> – Concentration of 8.49 µg/ml	34.59 ± 1.66

Source: Primary data was processed, 2020

Table2. One-way ANOVA test on Syndecan-1 Expression

	Sum of squares	df	Mean squares	F	Sig.
Between Groups	2048.128	4	512.032	48.641	.000
Within Groups	94.741	9	10.527		
Total	2142.869	13			

Source: Primary data was processed, 2020

Table3. Results of LSD Parametric Tests between Groups on Syndecan-1 Expressions

No.	Group	K0	K1	P1	P2	P3
1	K0		24.031** (p=0.000)	-9.265* (p=0.012)	-30.875** (p=0.000)	-33.092** (p=0.000)
2	K1	24.031** (p=0.000)		14.766** (p=0.000)	-6.753* (p=0.031)	-9.060* (0.008)
3	P1	9.265* (p=0.012)	-14.766** (p=0.000)		-21.520** (p=0.000)	-23.826** (0.000)
4	P2	30.785** (p=0.000)	6.753* (p=0.031)	21.520** (p=0.000)		-2.306 (p=0.407)
5	P3	33.092** (p=0.000)	9.060* (0.008)	23.826** (0.000)	2.306 (p=0.407)	

Description: * = significant (p<0.05)
 ** = very significant (p<0.01)
 K0 = negative control (without treatment)
 K1 = positive control (cisplatin 11.35 µg/ml)
 P1 = ethanol extract of *G.lucidum* with concentration of 2.12 µg/ml
 P2 = ethanol extract of *G.lucidum* with concentration of 4.24 µg/ml
 P3 = ethanol extract of *G.lucidum* with concentration of 8.49 µg/ml

Source: Primary data was processed, 2020

FIGURES

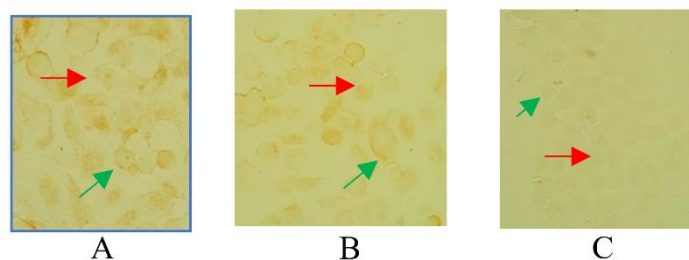


Figure 1. Expression of Syndecan-1 with A. treatment ethanol extract; B. Cisplatin; C. Aquades on immunohistochemical examination

→ : cells that did not express syndecan-1
 → : cells that expressed syndecan-1

Source: Primary data was processed, 2020

REFERENCE

- Bray F, Ferlay J, Soerjomataram I, Siegel RL, Torre LA, Jemal A. Global cancer statistics 2018: GLOBOCAN estimates of incidence and mortality worldwide for 36 cancers in 185 countries. *CA Cancer J Clin.* 2018; 68(6): 394-424.
- Noguti J, De Moura CFG, De Jesus GPP, Da Silva VHP, Hossaka TA, Oshima CTF, et al. Metastasis from oral cancer: an overview. *Cancer Genomics-Proteomics.* 2012; 9(5): 329-35;
- Arellano-Garcia ME, Li R, Liu X, Xie Y, Yan X, Loo JA, et al. Identification of tetranectin as a potential biomarker for metastatic oral cancer. *Int J Mol Sci.* 2010; 11(9): 3106-21;
- Muramatsu T. Reduced Expression of Syndecan-1 in Oral Cancer. *Oral Cancer*2012;
- Liang Z, Yi Y, Guo Y, Wang R, Hu Q, Xiong X. Chemical characterization and antitumor activities of polysaccharide extracted from *Ganoderma lucidum*. *Int J Mol Sci.* 2014; 15(5): 9103-16.

6. Szatmari T, Dobra K. The role of syndecan-1 in cellular signaling and its effects on heparan sulfate biosynthesis in mesenchymal tumors. *Front Oncol.* 2013; 3: 310
7. Szatmari T, Otvos R, Hjerpe A, Dobra K. Syndecan-1 in cancer: Implications for cell signaling, differentiation, and prognostication. *Dis Markers.* 2015; 2015: 796052.
8. Huang SH, O'Sullivan B. Oral cancer: Current role of radiotherapy and chemotherapy. *Med Oral Patol Oral Cir Bucal.* 2013;18(2): 233-40.
9. Martinez-Montemayor MM, Acevedo RR, Otero-Franqui E, Cubano LA, Dharmawardhane SF. Ganoderma lucidum (Reishi) inhibits cancer cell growth and expression of key molecules in inflammatory breast cancer. *Nutr Cancer.* 2011; 63(7): 1085-94
10. Mujahid I, Muchtashjar. Uji proliferasi dan uji apoptosis ganoderma lucidum (curtis) p.karst sebagai anti kanker serviks. *Prosiding Seminar hasil penelitian LPPM UMP.* 2014.
11. Carreon-Burciaga RG, Gonzalez-Gonzalez R, Molina-Frechero N, Lopez-Verdin S, Pereira-Prado V, Bologna-Molina R. Differences in e-cadherin and syndecan-1 expression in different types of ameloblastomas. *Anal Cell Pathol (Amst).* 2018; 2018: 9392632
12. Ningsih D. Aktivitas antidiabetes dari fraksi air lingzhi (ganoderma lucidum (curtis) p. karst)) pada tikus diabetes dengan induksi aloksan. *J. Pharmascience.* 2015; 2(1): 10-8.
13. Mise I, Vucic M. Comparison of syndecan-1 immunohistochemical expression in lobular and ductal breast carcinoma with nodal metastases. *Anal. Cell. Pathol. (Amst).* 2018; 2018: 9432375.
14. Carreón-Burciaga RG, González-González R, Molina-Frechero N, López-Verdín S, Pereira-Prado V, Bologna-Molina R. Differences in E-cadherin and syndecan-1 expression in different types of ameloblastomas. *Anal. Cell. Pathol.* 2018; 2018.
15. Setyawan B, Widiastuti MG, Rahmat M. Ekspresi syndecan-1, matriks metalloproteinase-2 dan il-1 α pada ameloblastoma multikistik (penelitian restrospektif analitik di rsup dr. sardjito tahun 2010-2014). *J. Kedokt. Gigi.* 2015; 7(2): 26-33.
16. Al-Otaibi O, Khounganian R, Anil S, Rajendran R. Syndecan-1 (CD 138) surface expression marks cell type and differentiation in ameloblastoma, keratocystic odontogenic tumor, and dentigerous cyst. *J Oral Pathol Med.* 2013; 42(2): 186-93
17. Brito-Mendoza L, Bologna-Molina R, Irigoyen-Camacho ME, Martinez G, Sanchez-Romero C, Mosqueda-Taylor A. A comparison of Ki67, syndecan-1 (CD138), and molecular RANK, RANKL, and OPG triad expression in odontogenic keratocysts, unicystic ameloblastoma, and dentigerous cysts. *Dis Markers.* 2018; 2018: 7048531
18. Zong F, Fthenou E, Mundt F, Szatmári T, Kovalszky I, Szilák L, et al. Specific syndecan-1 domains regulate mesenchymal tumor cell adhesion, motility and migration. *PLoS One.* 2011; 6(6): 14816;
19. Peterfia B, Fule T, Baghy K, Szabadkai K, Fullar A, Dobos K, et al. Syndecan-1 enhances proliferation, migration and metastasis of HT-1080 cells in cooperation with syndecan-2. *PLoS One.* 2012; 7(6): e39474.
20. Lakkam B, Majage B, Astekar M, Gugwad RS, Giri G, Ramasahayam S. Immunohistochemical expression of syndecan-1 in oral dysplastic epithelium. *J Cancer Res Ther.* 2014; 10(1): 103-6.
21. Akl MR, Nagpal P, Ayoub NM, Prabhu SA, Gliksman M, Tai B, et al. Molecular and clinical profiles of syndecan-1 in solid and hematological cancer for prognosis and precision medicine. *Oncotarget.* 2015; 6(30): 28693–715.
22. Sayyad MR, Puchalapalli M, Vergara NG, Wangenstein SM, Moore M, Mu L, et al. Syndecan-1 facilitates breast cancer metastasis to the brain. *Breast Cancer Res Treat.* 2019; 178(1): 35-49.
23. Chute C, Yang X, Meyer K, Yang N, O'Neil K, Kasza I, et al. Syndecan-1 induction in lung micro-environment supports the establishment of breast tumor metastases. *Breast Cancer Res.* 2018; 20(1): 66.
24. de Oliveira Barros EG, Palumbo A, Jr., Mello PL, de Mattos RM, da Silva JH, Pontes B, et al. The reciprocal interactions between astrocytes and prostate cancer cells represent an early event associated with brain metastasis. *Clin Exp Metastasis.* 2014;31(4):461-74