

# PEER REVIEW

A3

**LEMBAR**  
**HASIL PENILAIAN SEJAWAT SEBIDANG ATAU PEER REVIEW**  
**KARYA ILMIAH : JURNAL ILMIAH**

Judul Jurnal Ilmiah (Artikel) : Insect Pollinator Diversity Along a Habitat Quality Gradient on Mount Slamet , Central Java, Indonesia

Penulis Jurnal Ilmiah \*) : 1 Imam Wihiono (\*nama pengusul dicetak tebal)  
 2 **Eming Sudiana**  
 3 Edy Tri Sucianto

Jumlah Penulis : 3

Status Penulis : Penulis Ke-2

Identitas Jurnal Ilmiah :

- a. Nama Jurnal : BIODIVERSITAS Journal of Biological Diversity
- b. Nomor ISSN : ISSN: P-1412-033x E-ISSN: 2085-4722
- c. Edisi/Volume, Nomor : Edisi Oktober 2016/Vol. 17 Nomor : 2
- d. Penerbit : Department of Biology, FMNS, Universitas Sebelas
- e. DOI artikel : <https://doi.org/10.13057/biodiv/d170250>
- f. Alamat Web : <https://smujo.id/biodiv/article/view/425>
- g. Terindeks di : SCOPUS, Q3, SJR : 0,27

Kategori Publikasi Jurnal Ilmiah : ☒ Jurnal Ilmiah Internasional /Internasional Bereputasi  
 (beri v pada kategori yang tepat) ☐ Jurnal Ilmiah Nasional Terakreditasi  
☐ Jurnal Nasional/Nasional terindeks di..... \*

Hasil Penilaian Peer Review :

Komponen Yang Dinilai	Nilai Maksimal Jurnal Ilmiah			Nilai Akhir Yang Diperoleh
	Internasional/ Internasional bereputasi	Nasional Terakreditasi	Nasional Terindeks *)	
	40			
a Kelengkapan unsur isi artikel (10%)	10 % X 40= 4			4.0
b Ruang lingkup dan kedalaman pembahasan (30%)	30 % X 40= 12			11.9
c Kecukupan dan kemutahiran data/informasi dan metodologi (30%)	30 % X 40= 12			11.8
d Kelengkapan unsur dan kualitas terbitan/jurnal (30%)	30 % X 40= 12			11.9
<b>Total = (100%)</b>	<b>40</b>			<b>39.5</b>
<b>Nilai Pengusul (40 % x Total)/2</b>	<b>8</b>			<b>7.90</b>
Catatan Penilaian artikel oleh Reviewer:				
1. Tentang kelengkapan dan kesesuaian unsur	: Lengkap dan sesuai			
2. Tentang ruang lingkup dan kedalaman pembahasan	: Sangat baik dan cukup mendalam			
3. Kecukupan dan kemutahiran data serta metodologi	: Cukup dan mutahir			
4. Kelengkapan unsur kualitas penerbit	: Lengkap			
5. Indikasi plagiasi	: Tidak ada			
6. Kesesuaian bidang ilmu	: Sesuai			

Purwokerto,

\*) Wajib diisi

Reviewer 1



Dr. Dwi Nugroho Wibowo, M.S.  
 NIP. 196111251986011001  
 Jabatan/Gol. : Lektor Kepala/(Gol. IV/c)  
 Bidang Ilmu : Ekologi  
 Unit Kerja : Fakultas Biologi Unsoed

Reviewer 2



Drs. Edy Yani, M.S.  
 NIP. 195811301984031001  
 Jabatan/Gol. : Lektor Kepala/(Gol. IV/c)  
 Bidang Ilmu : Ekologi Tumbuhan  
 Unit Kerja : Fakultas Biologi Unsoed

A3

**LEMBAR**  
**HASIL PENILAIAN SEJAWAT SEBIDANG ATAU PEER REVIEW**  
**KARYA ILMIAH : JURNAL ILMIAH**

Judul Jurnal Ilmiah (Artikel) : Insect Pollinator Diversity Along a Habitat Quality Gradient on Mount Slamet , Central Java, Indonesia

Penulis Jurnal Ilmiah \*) : 1 Imam Wihiono (\*nama pengusul dicetak tebal)  
 2 **Eming Sudiana**  
 3 Edy Tri Sucianto

Jumlah Penulis : 3

Status Penulis : Penulis Ke-2

Identitas Jurnal Ilmiah :

- a. Nama Jurnal : BIODIVERSITAS Journal of Biological Diversity
- b. Nomor ISSN : ISSN: P-1412-033x E-ISSN: 2085-4722
- c. Edisi/Volume, Nomor : Edisi Oktober 2016/Vol. 17 Nomor : 2
- d. Penerbit : Department of Biology, FMNS, Universitas Sebelas Maret Surakarta
- e. DOI artikel : <https://doi.org/10.13057/biodiv/d170250>
- f. Alamat Web : <https://smujo.id/biodiv/article/view/425>
- g. Terindeks di : SCOPUS, Q3, SJR : 0,27

Kategori Publikasi Jurnal Ilmiah : ☒ Jurnal Ilmiah Internasional /Internasional Bereputasi  
 (beri v pada kategori yang tepat) ☐ Jurnal Ilmiah Nasional Terakreditasi  
☐ Jurnal Nasional/Nasional terindeks di..... \*

Hasil Penilaian Peer Review :

Komponen Yang Dinilai	Nilai Maksimal Jurnal Ilmiah			Nilai Akhir Yang Diperoleh
	Internasional/ Internasional bereputasi 40	Nasional Terakreditasi	Nasional *)	
a Kelengkapan unsur isi artikel (10%)	10 % X 40= 4			4
b Ruang lingkup dan kedalaman pembahasan (30%)	30 % X40= 12			11,7
c Kecukupan dan kemutakhiran data/informasi dan metodologi (30%)	30 % X40= 12			11,7
d Kelengkapan unsur dan kualitas terbitan/jurnal (30%)	30 % X40= 12			11,7
<b>Total = (100%)</b>	<b>40</b>			<b>39,1</b>
<b>Nilai Pengusul (40 % x Total)/2</b>	<b>8</b>			<b>2,82</b>

Catatan Penilaian artikel oleh Reviewer:

1. Tentang kelengkapan dan kesesuaian unsur : Lengkapi & sesuai
2. Tentang ruang lingkup dan kedalaman pembahasan : Baik & cukup dalam
3. Kecukupan dan kemutakhiran data serta metodologi : Cukup & mutakhir
4. Kelengkapan unsur kualitas penerbit : Lengkapi
5. Indikasi plagiasi : Tidak ada
6. Kesesuaian bidang ilmu : sesuai

Purwokerto, 16 Oktober 2020 \*) wajib diisi

Reviewer 1



Dr. Dwi Nugroho Wibowo, M.S.  
 NIP. 196111251986011001  
 Jabatan/Gol. : Lektor Kepala/(Gol. IV/c)  
 Bidang Ilmu : Ekologi  
 Unit Kerja : Fakultas Biologi Unsoed



Prof. Dr. Imam Widhiono M.Z., M.S.  
 NIP. 195904201985031002  
 Unit Kerja : Fakultas Biologi Unsoed



D3

**LEMBAR**  
**HASIL PENILAIAN SEJAWAT SEBIDANG ATAU PEER REVIEW**  
**KARYA ILMIAH : JURNAL ILMIAH**

Judul Jurnal Ilmiah (Artikel) : Insect Pollinator Diversity Along a Habitat Quality Gradient on Mount Slamet, Central Java, Indonesia

Penulis Jurnal Ilmiah \*) : 1 Imam Wihiono (\*nama pengusul dicetak tebal)  
 2 **Eming Sudiana**  
 3 Edy Tri Sucianto

Jumlah Penulis : 3

Status Penulis : Penulis Ke-2

Identitas Jurnal Ilmiah :

- a. Nama Jurnal : BIODIVERSITAS Journal of Biological Diversity
- b. Nomor ISSN : ISSN: P-1412-033x E-ISSN: 2085-4722
- c. Edisi/Volume, Nomor : Edisi Oktober 2016/Vol. 17 Nomor : 2
- d. Penerbit : Department of Biology, FMNS, Universitas Sebelas Maret Surakarta
- e. DOI artikel : <https://doi.org/10.13057/biodiv/d170250>
- f. Alamat Web : <https://smujo.id/biodiv/article/view/425>
- g. Terindeks di : SCOPUS, Q3, SJR : 0,27

Kategori Publikasi Jurnal Ilmiah : ☒ Jurnal Ilmiah Internasional /Internasional Bereputasi  
 (beri v pada kategori yang tepat) ☐ Jurnal Ilmiah Nasional Terakreditasi  
☐ Jurnal Nasional/Nasional terindeks di..... \*

Hasil Penilaian Peer Review :

Komponen Yang Dinilai	Nilai Maksimal Jurnal Ilmiah			Nilai Akhir Yang Diperoleh
	Internasional/ Internasional bereputasi	Nasional Terakreditasi	Nasional *)	
	40			
a Kelengkapan unsur isi artikel (10%)	10 % X 40= 4			4
b Ruang lingkup dan kedalaman pembahasan (30%)	30 % X 40= 12			12
c Kecukupan dan kemutakhiran data/informasi dan metodologi (30%)	30 % X 40= 12			11,9
d Kelengkapan unsur dan kualitas terbitan/jurnal (30%)	30 % X 40= 12			12
<b>Total = (100%)</b>	<b>40</b>			<b>39,9</b>
<b>Nilai Pengusul (40 % x Total)/2</b>	<b>8</b>			<b>7,98</b>

Catatan Penilaian artikel oleh Reviewer:

1. Tentang kelengkapan dan kesesuaian unsur : lengkap & sesuai
2. Tentang ruang lingkup dan kedalaman pembahasan : cukup baik
3. Kecukupan dan kemutakhiran data serta metodologi : mutakhir
4. Kelengkapan unsur kualitas penerbit : lengkap
5. Indikasi plagiasi : tidak ada
6. Kesesuaian bidang ilmu : sesuai

Purwokerto, 5-10-2020 \*) wajib diisi

Reviewer 2



Drs. Edy Yani, M.S.  
 NIP. 195811301984031001  
 Jabatan/Gol. : Lektor Kepala/(Gol. IV/c)  
 Bidang Ilmu : Ekologi Tumbuhan  
 Unit Kerja : Fakultas Biologi Unsoed



Monongahui :  
 Dekan  
 Prodi Derajat Imam Widhiono M.Z., M.S.  
 NIP. 195904201985031002  
 Unit Kerja : Fakultas Biologi Unsoed

# ARTIKEL

# BIODIVERSITAS

Journal of Biological Diversity  
Volume 17 - Number 2 - October 2016

---

<b>Diversity analysis and genetic potency identification of local rice cultivars in Penajam Paser Utara and Paser Districts, East Kalimantan</b> NURHASANAH, SADARUDDIN, WIDI SUNARYO	401-408
<b>Soil and leaf nutrient status on growth of <i>Macaranga gigantea</i> in secondary forest after shifting cultivation in East Kalimantan, Indonesia</b> DWI SUSANTO, DADDY RUCHIYAT, MAMAN SUTISNA, RUDIANTO AMIRTA	409-416
<b>Microscopic decay pattern of yellow meranti (<i>Shorea gibbosa</i>) wood caused by white-rot fungus <i>Phlebia brevispora</i></b> ERWIN	417-421
<b>Morphological, anatomical and isozyme variation among giant taro (<i>Alocasia macrorrhizos</i>) accessions from Central Java, Indonesia</b> SURATMAN, ARI PITOYO, SEPTIANA KURNIASARI, SURANTO	422-429
<b>Single Nucleotide Polymorphism within the <i>LDLR</i> gene and responsiveness of cynomolgus macaque (<i>Macaca fascicularis</i>) to atherogenic diet</b> ACHMAD TAHER, DEDY DURYADI SOLIHIN, SULISTYANI, DONDIN SAJUTHI, DEWI APRI ASTUTI	430-434
<b>The local knowledge of the rural people on species, role and hunting of birds: Case study in Karangwangi Village, West Java, Indonesia</b> JOHAN ISKANDAR, BUDIAWATI SUPANGKAT ISKANDAR, RUHYAT PARTASASMITA	435-446
<b>Mechanisms of antixenosis, antibiosis, and tolerance of fourteen soybean genotypes in response to whiteflies (<i>Bemisia tabaci</i>)</b> APRI SULISTYO, ALFI INAYATI	447-453
<b>Short Communication: Morphological study of <i>Fagraea ceilanica</i> (Gentianaceae) in Mount Nglanggeran, Yogyakarta, Indonesia</b> WIDODO1, MUHAMMAD JA'FAR LUTHFI	454-460
<b>Short Communication: Evaluation of quantitative and qualitative morphological characters of sunflower (<i>Helianthus annuus</i>) germplasm</b> RULLY DYAH PURWATI, ANIK HERWATI	461-465
<b>Dendrochronology of young <i>Swietenia macrophylla</i> and the variation of its growth response to the past wet climate in Bengkulu, Indonesia</b> AGUS SUSATYA, YANSEN	466-472
<b>Soil invertebrates diversity in coffee-pine agroforestry system at Sumedang, West Java, Indonesia</b> IDA KINASIH, TRI CAHYANTO, ANA WIDIANA, DESTI NURBAH INDAH KURNIA, UCU JULITA, RAMADHANI EKA PUTRA	473-478
<b>Diversity of faunal communities in the Biodiversity Park of Ciherang, Bogor, West Java, Indonesia</b> HENDRA GUNAWAN, SUGIARTI, ANITA RIANI, VIVIN SILVALIANDRA SIHOMBING	479-486
<b>Short Communication: Genetic diversity and conservation strategy considerations for highly valuable medicinal tree of <i>Taxus sumatrana</i> in Indonesia</b> HENTI HENDALASTUTI RACHMAT, ATOK SUBIAKTO, KOICHI KAMIYA	487-491

<b>Short Communication: Identification of growth hormone gene variation in exon region at Indonesian Local Cattle based on PCR-SSCP method</b>	<b>492-497</b>
SURYA NUR RAHMATULLAH, JAKARIA, RONNY R. NOOR	
<b>Short Communication: Fecundity of freshwater prawn (<i>Macrobrachium rosenbergii</i>) in selected rivers of Sarawak, Malaysia</b>	<b>498-502</b>
KHAIRUL ADHA AR, FAZNUR FATEH NICHOLAS, SHABDIN MOHD. LONG, AWANGKU SHAHRIR NAQUIDDIN, YUZINE ESA	
<b>Vegetative and generative growth of groundnut genotypes under biotic environmental stress</b>	<b>503-509</b>
AGUSTINA ASRI RAHMIANNA, ERIYANTO YUSNAWAN	
<b>Short Communication: Georeferencing orchids specimen history cards in Bogor Botanic Gardens to increase their use for conservation efforts</b>	<b>510-514</b>
EKA MARTHA DELLA RAHAYU , SAFRAN YUSRI	
<b>Relationship of physicochemical factors with fish biomass and production in Shadegan wetland, Iran</b>	<b>515-522</b>
SEYEDAHMADREZA HASHEMI, RASOUL GHORBANI, FARHAD KYMARAM, SEYED ABASS HOSSINI, GHOLAMREZA ESKANDARI, ALIAKBAR HEDAYATI	
<b>Identification and expression of two types of chicken GnRH-II genes in mature hard-lipped barb, <i>Osteochilus hasselti</i></b>	<b>523-530</b>
N.A. PRAYOGO, G.E. WIJAYANTI, I. SULISTYO, P. SUKARDI,	
<b>Plant diversity after sixty years post coal mining in East Kalimantan, Indonesia</b>	<b>531-538</b>
LIRIS LIS KOMARA, DEVI NANDITA CHOESIN, TATI SURYATI SYAMSUDIN	
<b>Sequence-Related Amplified Polymorphism (SRAP) analysis for studying genetic characterization of <i>Bouea macrophylla</i></b>	<b>539-543</b>
SOMBHAT KAEWPONGUMPAI, SUPATTRA POEAIM, ONGKARN VANIJAJIVA	
<b>Suitability and availability analysis of tropical forest wood species for ethanol production: a case study in East Kalimantan</b>	<b>544-552</b>
RUDIANTO AMIRTA, AHMAD MUKHDLOR, DEWI MUJIASIH, ELIS SEPTIA, SUPRIADI, DWI SUSANTO	
<b>Short Communication: Conservation of mangrove gobies in Lesser Sunda Islands, Indonesia</b>	<b>553-557</b>
YULIADI ZAMRONI, ZEEHAN JAAFAR, KADARWAN SOEWARDI, BAMBANG SURYOBROTO	
<b>Fish community structure in high water temperature around Bontang Industrial Estate, East Kalimantan, Indonesia</b>	<b>558-564</b>
IWAN SUYATNA, A. SYAFEI SIDIK, ISMAIL FAHMY ALMADI, SAMSUL RIZAL, KOMSANAH SUKARTI	
<b>Identification of soybean genotypes adaptive and productive to acid soil agro-ecosystem</b>	<b>565-570</b>
M. MUCHLISH ADIE, AYDA KRISNAWATI	
<b>Molecular identification of commercially important species of <i>Nemipterus</i> (Perciformes: Nemipteridae) in surrounding seas of Malaysia</b>	<b>571-577</b>
AYESHA IMTIAZ, DUONG THUY YEN, SITI AZIZAH MOHD NOR, DARLINA MD. NAIM	
<b>Identification of denitrifying bacteria from sediments of Rawa Jombor waters, Central Java and its trophic status</b>	<b>578-584</b>
SUNARTO, RATNA SETYANINGSIH, ANDRI YANTI	
<b>Seagrass biodiversity at three marine ecoregions of Indonesia: Sunda Shelf, Sulawesi Sea, and Banda Sea</b>	<b>585-591</b>
MUJIZAT KAWAROE, ADITYA HIKMAT NUGRAHA, JURAIJ, ILHAM ANTARIKSA TASABARAMO	

<b>Morphology, anatomy, and mycorrhizal fungi colonization in roots of epiphytic orchids of Sempu Island, East Java, Indonesia</b>	<b>592-603</b>
SITI NURFADILAH, NINA DWI YULIA, ESTI ENDAH ARIYANTI	
<b>Short Communication: Resistance of eleven new hybrid maize genotypes to Turcicum leaf blight (<i>Exserohilum turcicum</i>)</b>	<b>604-608</b>
BUDI SETYAWAN, IRFAN SULIANSYAH, ASWALDI ANWAR, ETTI SWASTI	
<b>Characterization of soybean genotypes for Asian soybean rust reaction under screen house condition</b>	<b>609-613</b>
ALFI INAYATI, ERIYANTO YUSNAWAN	
<b>Diversity and phylogenetic relationship of cellulolytic bacteria from the feces of Bali Cattle in South Central Timor, East Nusa Tenggara, Indonesia</b>	<b>614-619</b>
HILDEGARDIS MISSA, ARI SUSILOWATI, RATNA SETYANINGSIH	
<b>Choosing native tree species for establishing man-made forest: A new perspective for sustainable forest management in changing world</b>	<b>620-625</b>
ATOK SUBIAKTO, HENTI HENDALASTUTI RACHMAT, CHIKAYA SAKAI	
<b>Long-term variability of zooplankton community under climate warming in tropical eutrophic man-made lake</b>	<b>626-633</b>
SUNARDI, TAKAO YOSHIMATSU, NIKO JUNIANTO, NADIA ISTIQAMAH, TYRELL DEWEBER	
<b>Short Communication: Fish diversity of the Batang Toru River System, South Tapanuli, North Sumatra</b>	<b>634-641</b>
DEWI IMELDA ROESMA, ADA CHORNELIA, AHMAD MURSYID, MISTAR KAMSI	
<b>Antidiabetic screening of some Indonesian marine cyanobacteria collection</b>	<b>642-646</b>
SRI PRIATNI, THELMA A. BUDIWATI, DIAH RATNANINGRUM, WAWAN KOSASIH, RINA ANDRYANI, HANI SUSANTI, DWI SUSILANINGSIH	
<b>Data provision of PIK3CA gene diversity and recombinant plasmids preparation for control DNA in developing the trastuzumab predictive response diagnostic kit</b>	<b>647-652</b>
DESRIANI, BUGI RATNO BUDIARTO, WIRSMA ARIF HARAHAP, M. ALI WARISMAN, AUDREY VANIA CLARISSA OMPUSUNGGU, DINA ATHARIAH, FARIDA MIRNAWATI, IDA YUSSRIYANI, FUAD ALAHWANI, AHMAD RIZQI KURNIAWAN	
<b>Short Communication: Using ITS as a molecular marker for <i>Mangifera</i> species identification in Central Sumatra</b>	<b>653-656</b>
FITMAWATI, IBNA HAYATI, NERY SOFIYANTI	
<b>The water quality parameters controlling diatoms assemblage in Rawapening Lake, Indonesia</b>	<b>657-664</b>
T.R. SOEPROBOWATI, S.D. TANDJUNG, SUTIKNO, S. HADISUSANTO, P. GELL, HADIYANTO, S.W.A. SUEDY	
<b>Freshwater fish diversity in an oil palm concession area in Mimika, Papua</b>	<b>665-672</b>
HENDERITE L. OHEE	
<b>The abundance of phytoplankton and its relationship to the N/P ratio in Jakarta Bay, Indonesia</b>	<b>673-678</b>
TUMPAK SIDABUTAR, DIETRICH G. BENGEN, SAM WOUTHUYZEN, TRI PARTONO	
<b>Biological characteristics on three demersal fish landed in Tegal, north coast of Central Java, Indonesia</b>	<b>679-686</b>
DUTO NUGROHO, MUFTI P. PATRIA, JATNA SUPRIATNA, LUKY ADRIANTO	
<b>Short Communication: RAPD fingerprinting key and phylogenetic of nine seagrass species from Sanur coastal water, Bali, Indonesia using matK sequences</b>	<b>687-693</b>
MADE PHARMAWATI, UUL SHOVI NURKAMILA, STEVANUS	



<b>Ethnoastronomy – The Baduy agricultural calendar and prediction of environmental perturbations</b>	<b>694-703</b>
JOHAN ISKANDAR, BUDIAWATI S.ISKANDAR	
<b>The diversity of secondary metabolites in Indonesian soybean genotypes</b>	<b>704-710</b>
ERİYANTO YUSNAWAN	
<b>Short Communication: Identification of Growth Hormone gene polymorphism for beef cattle in Pesisir Selatan District, West Sumatra, Indonesia</b>	<b>711-715</b>
DINO EKA PUTRA, SUMADI, TAKUYA KANAZAWA, TETY HARTATIK	
<b>Review: Persistent pioneers; <i>Borassus</i> L. and <i>Corypha</i> L. in Malasia</b>	<b>716-732</b>
GRAHAM E. EAGLETON	
<b><i>Syzygium</i> diversity in Gunung Baung, East Java, Indonesia</b>	<b>733-740</b>
DEDEN MUDIANA	
<b>Short Communication: The survival rate and one-year growth of <i>Shorea javanica</i>, <i>Shorea macrobalanos</i> and <i>Hopea mengarawan</i> in coal mined land in Central Bengkulu, Indonesia</b>	<b>741-745</b>
WIRYONO, HERY SUHARTOYO, ALI MUNAWAR	
<b>Insect pollinator diversity along a habitat quality gradient on Mount Slamet, Central Java, Indonesia</b>	<b>746-752</b>
IMAM WIDHIONO, EMING SUDIANA, EDY TRI SUCIANTO	
<b>Markers-traits association for iron toxicity tolerance in selected Indonesian rice varieties</b>	<b>753-763</b>
YUDHISTIRA NUGRAHA, DWINITA W. UTAMI, IDA ROSDIANTI, SINTHO WAHYUNING ARDIE, MUNIF GHULAMMAHDI, SUWARNO, HAJRIAL ASWIDINNOOR	
<b>Prospect of indigenous plant species for revegetation in the tailings area of ex community gold mine</b>	<b>764-768</b>
WIWIK EKYASTUTI, DWI ASTIANI, EMI ROSLINDA	
<b>Comparison of <i>Neurospora crassa</i> and <i>Neurospora sitophila</i> for phytase production at various fermentation temperatures</b>	<b>769-775</b>
ATIT KANTI, I MADE SUDIANA	
<b>Four new varieties of <i>Begonia</i> from interspecific hybridization <i>Begonia natunaensis</i> C.W.Lin &amp; C.I.Peng × <i>Begonia puspitae</i> Ardi</b>	<b>776-782</b>
HARTUTININGSIH-M. SIREGAR	
<b>Human-Leopard Conflict in Girimukti Village, Sukabumi, Indonesia</b>	<b>783-790</b>
RUHYAT PARTASASMITA, SYA SYA SHANIDA, JOHAN ISKANDAR, ERRI NOVIAR MEGANTARA, TEGUH HUSODO, PARIKESIT, NICHOLAS MALONE	
<b>The value of secondary forest patches for bird conservation in palm oil landscapes of Riau, Sumatra</b>	<b>791-798</b>
ERNIWATI, ERVIZAL AMIR MUHAMMAD ZUHUD, YANTO SANTOSA, ISWANDI ANAS	
<b>Short Communication: Spiders of Sabah: Fifty new records including the description of a new <i>Leucauge</i> species</b>	<b>799-807</b>
DZULHELMI MUHAMMAD NASIR, WONG CHUN XING, ASRAF BAKRI, FASZLY RAHIM, NORMA-RASHID YUSOFF	
<b>The length-weight correlation and population dynamics of razor clams (<i>Solen regularis</i>) in Surabaya east coast, Indonesia</b>	<b>808-813</b>
NINIS TRISYANI, ENDANG YULI HERAWATI, MAHENO SRI WIDODO, DADUK SETYOHADI	
<b>Wati (<i>Piper methysticum</i>) medicinal plant: The ethnobiological and ethnomedicinal values of the Marind tribe in Merauke, Papua, Indonesia</b>	<b>814-822</b>
SUHARNO, ROSYE HEFMY RECHNELTY TANJUNG, SUPENI SUFAATI, VERENA AGUSTINI	

<b>Handicraft of butterflies and moths (Insecta: Lepidoptera) in Bantimurung Nature Recreation Park and its implications on conservation</b>	<b>823-831</b>
INDRA A.S.L.P. PUTRI	
<b>Botanical survey in thirteen montane forests of Bawean Island Nature Reserve, East Java Indonesia: Flora diversity, conservation status, and bioprospecting</b>	<b>832-846</b>
TRIMANTO, LIA HAPSARI	
<b>Temporal diversity of <i>Taraxacum kok-saghyz</i> plants reveals high rubber yield phenotypes</b>	<b>847-856</b>
KATRINA CORNISH, STEVEN L. KOPICKY, SARAH K. MCNULTY, NIKITA AMSTUTZ, ANN M. CHANON, SONIA WALKER, MATTHEW D. KLEINHENZ, ALBERT R. MILLER, JOHN G. STREETER	
<b>Polycyclic aromatic hydrocarbon degrading bacteria from the Indonesian Marine Environment</b>	<b>857-864</b>
ELVI YETTI, AHMAD THONTOWI, YOPI	
<b>Crown shape dynamics of dense mangrove <i>Kandelia obovata</i> stands in Manko Wetland, Okinawa Island, Japan</b>	<b>865-872</b>
KANGKUSO ANALUDDIN, ANDI SEPTIANA, SAHADEV SHARMA, AKIO HAGIHARA	
<b>The uses of bioresources of biosphere reserve by local community of Giam Siak Kecil-Bukit Batu, Riau Province, Indonesia</b>	<b>873-887</b>
PRIMA WAHYU TITISARI, TATI SURYATI SYAMSUDIN, ACHMAD SJARMIDI	
<b>Spatial and temporal description of water pollution status of Gajah Mungkur Reservoir Wonogiri, Central Java, Indonesia</b>	<b>888-893</b>
WIRYANTO	
<b>Morphological diversity and the cultivation practice of <i>Abelmoschus manihot</i> in West Papua, Indonesia</b>	<b>894-899</b>
SARASWATI PRABAWARDANI, IRNANDA A.F. DJUUNA, FENNY ASYEREM, ALEXANDER YAKU, GRAHAM LYONS	
<b>The ethnobotany of medicinal plants in supporting the family health in Turgo, Yogyakarta, Indonesia</b>	<b>900-906</b>
MAIZER SAID NAHDI, IKA NUGRAHENI ARI MARTIWI, DISCA CAHYARI ARSYAH	
<b>Bacterial spatial distribution in the sediments of Gajah Mungkur Reservoir, Central Java, Indonesia</b>	<b>907-914</b>
PENI PUJIASTUTI, MASYKURI MASYKURI, TOTOK GUNAWAN, SUTARNO	

---

***Front cover: Phlebia brevispora***  
**(PHOTO: ERWIN)**

---

**Published semiannually**

**PRINTED IN INDONESIA**

ISSN: 1412-033X



9 771412 033498


E-ISSN: 2085-4722



9 772085 472492





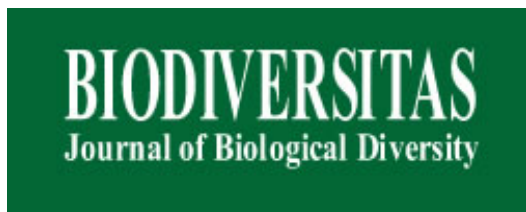


ISSN: 1412-033X  
E-ISSN: 2085-4722

# BIODIVERSITAS

**Journal of Biological Diversity**

Volume 17 - Number 2 - October 2016


[Contact Us](#)
[FAQ](#)
[Useful links](#)
[Home](#)
[Content and Archives](#)
[Aims and Scopes](#)
[Editorial Board](#)
[Guidance for Authors](#)
[Ethical Guidelines](#)
[Charges](#)
[Membership](#)
[Previously Reviewers](#)
[Conference Events](#)


**Biodiversitas Vol. 17, No. 2, October 2016**  
(Online First Publication)




only search Biodiversitas

### Table of Content

[Cover \[PDF\]](#)
[Editorial Board & Guidance for Authors \[PDF\]](#)

1. Diversity analysis and genetic potency identification of local rice cultivars in Penajam Paser Utara and Paser Districts, East Kalimantan [\[PDF\]](#)  
NURHASANAH, SADARUDDIN, WIDI SUNARYO
2. Soil and leaf nutrient status on growth of *Macaranga gigantea* in secondary forest after shifting cultivation in East Kalimantan, Indonesia [\[PDF\]](#)  
DWI SUSANTO, DADDY RUCHIYAT, MAMAN SUTISNA, RUDIANTO AMIRTA
3. Microscopic decay pattern of yellow meranti (*Shorea gibbosa*) wood caused by white-rot fungus *Phlebia brevispora* [\[PDF\]](#)  
ERWIN
4. Morphological, anatomical and isozyme variation among Giant taro (*Alocasia macrorrhizos*) accessions from Central Java, Indonesia [\[PDF\]](#)  
SURATMAN, ARI PITOYO, SEPTIANA KURNIASARI, SURANTO
5. Single Nucleotide Polymorphism within the LDLR gene and responsiveness of cynomolgus macaque (*Macaca fascicularis*) to atherogenic diet [\[PDF\]](#)  
ACHMAD TAHER, DEDY DURYADI SOLIHIN, SULISTIYANI, DONDIN SAJUTHI, DEWI APRI ASTUTI
6. The local knowledge of the rural people on species, role and hunting of birds: Case study in Karangwangi Village, West Java, Indonesia [\[PDF\]](#)  
JOHAN ISKANDAR, BUDIAWATI SUPANGKAT ISKANDAR, RUHYAT PARTASASMITA
7. The Mechanisms of antixenosis, antibiosis, and tolerance of fourteen soybean genotypes in response to whiteflies (*Bemisia tabaci*) [\[PDF\]](#)  
APRI SULISTYO, ALFI INAYATI
8. Short Communication: Morphological study of *Fagraea ceilanica* (Gentianaceae) in Mount Nglanggeran, Yogyakarta, Indonesia [\[PDF\]](#)  
WIDODO, MUHAMMAD JA'FAR LUTHFI
9. Short Communication: Evaluation of quantitative and qualitative morphological characters of sunflower (*Helianthus annuus*) germplasm [\[PDF\]](#)  
RULLY DYAH PURWATI, ANIK HERWATI
10. Dendrochronology of young *Swietenia macrophylla* and the variation of its growth response to the past wet climate in Bengkulu, Indonesia [\[PDF\]](#)  
AGUS SUSATYA, YANSEN
11. Soil invertebrate diversity in coffee-pine agroforestry system at Sumedang, West Java [\[PDF\]](#)  
IDA KINASIH, TRI CAHYANTO, ANA WIDIANA, DESTI NURBAH INDAH KURNIA, UCU JULITA, RAMADHANI EKA PUTRA
12. Diversity of faunal communities in the Biodiversity Park of Ciherang, Bogor, West Java, Indonesia [\[PDF\]](#)  
HENDRA GUNAWAN, SUGIARTI, ANITA RIANI, VIVIN SILVALIANDRA SIHOMBING
13. Short Communication: Genetic diversity and conservation strategy considerations for highly valuable medicinal tree of *Taxus sumatrana* in Indonesia [\[PDF\]](#)  
HENTI HENDALASTUTI RACHMAT, ATOK SUBIAKTO, KOICHI KAMIYA
14. Short Communication: Identification of growth hormone gene variation in exon region at Indonesian Local Cattle based on PCR-SSCP method [\[PDF\]](#)  
SURYA NUR RAHMATULLAH, JAKARIA, RONNY R. NOOR
15. Short Communication: Fecundity of freshwater prawn (*Macrobrachium rosenbergii*) in selected rivers of Sarawak, Malaysia [\[PDF\]](#)  
KHAIRUL ADHA AR, FAZNUR FATEH NICHOLAS, SHABDIN MOHD LONG, AWANGKU SHAHRIR NAQIUDDIN, YUZINE ESA
16. Vegetative and generative growth of groundnut genotypes under biotic environmental stress [\[PDF\]](#)  
AGUSTINA ASRI RAHMIANNA, ERIYANTO YUSNAWAN
17. Short Communication: Georeferencing orchids specimen history cards in Bogor Botanic Gardens to increase their use for conservation efforts [\[PDF\]](#)  
EKA MARTHA DELLA RAHAYU, SAFRAN YUSRI
18. Short Relationship of physicochemical factors with fish biomass and production in Shadegan wetland, Iran [\[PDF\]](#)

- SEYEDAHMADREZA HASHEMI, RASOUL GHORBANI, FARHAD KYMARAM, SEYED ABASS HOSSINI, GHOLAMREZA ESKANDARI, ALIAKBAR HEDAYATI
19. Short Identification and expression of two types of chicken GnRH-II genes in mature hard-lipped barb, *Osteochilus hasselti* [PDF]  
N.A. PRAYOGO, G.E. WIJAYANTI, I. SULISTYO, P. SUKARDI
  20. Plant diversity after sixteen years post coal mining in East Kalimantan, Indonesia [PDF]  
LIRIS LIS KOMARA, DEVI NANDITA CHOESIN, TATI SURYATI SYAMSUDIN
  21. Sequence-Related Amplified Polymorphism (SRAP) analysis for studying genetic characterization of *Bouea macrophylla* [PDF]  
SOMBHAT KAEWPONGUMPAI, SUPATTRA POEAIM, ONGKARN VANIJAJIVA
  22. Suitability and availability analysis of tropical forest wood species for ethanol production: a case study in East Kalimantan [PDF]  
RUDIANTO AMIRTA, AHMAD MUKHDOR, DEWI MUJIASIH, ELIS SEPTIA, SUPRIADI, DWI SUSANTO
  23. Short Communication: Conservation of mangrove gobies in Lesser Sunda Islands, Indonesia [PDF]  
YULIADI ZAMRONI, ZEEHAN JAAFAR, KADARWAN SOEWARDI, BAMBANG SURYOBROTO
  24. Fish community structure in high water temperature around Bontang Industrial Estate, East Kalimantan, Indonesia [PDF]  
IWAN SUYATNA, A. SYAFEI SIDIQ, ISMAIL FAHMY ALMADI, SAMSUL RIZAL, KOMSANAH SUKARTI
  25. Identification of soybean genotypes adaptive and productive to acid soil agro-ecosystem [PDF]  
M. MUCHLISH ADIE, AYDA KRISNAWATI
  26. Molecular identification of commercially important species of *Nemipterus* (Perciformes: Nemipteridae) in surrounding seas of Malaysia [PDF]  
AYESHA IMTIAZ, DUONG THUY YEN, SITI AZIZAH MOHD NOR, DARLINA MD. NAIM
  27. Identification of denitrifying bacteria from sediments of Rawa Jombor waters, Central Java and its trophic status [PDF]  
SUNARTO, RATNA SETYANINGSIH, ANDRI YANTI
  28. Identification Seagrass biodiversity at three marine ecoregions of Indonesia: Sunda Shelf, Sulawesi Sea, and Banda Sea [PDF]  
MUJIZAT KAWAROE, ADITYA HIKMAT NUGRAHA, JURAI, ILHAM ANTARIKSA TASABARAMO
  29. Identification Morphology, anatomy, and mycorrhizal fungi colonization in roots of epiphytic orchids of Sempu Island, East Java, Indonesia [PDF]  
SITI NURFADILAH, NINA DWI YULIA, ESTI ENDAH ARIYANTI
  30. Short Communication: Resistance of eleven new hybrid maize genotypes to Turicum leaf blight (*Exserohilum turcicum*) [PDF]  
BUDI SETYAWAN, IRFAN SULIANSYAH, ASWALDI ANWAR, ETTI SWASTI
  31. Characterization of soybean genotypes for Asian soybean rust reaction under screen house condition [PDF]  
ALFI INAYATI, ERIYANTO YUSNAWAN
  32. Diversity and phylogenetic relationship of cellulolytic bacteria from the feces of Bali Cattle in South Central Timor, East Nusa Tenggara, Indonesia [PDF]  
HILDEGARDIS MISSA, ARI SUSILOWATI, RATNA SETYANINGSIH
  33. Choosing native tree species for establishing man-made forest: A new perspective for sustainable forest management in changing world [PDF]  
ATOK SUBIAKTO, HENTI HENDALASTUTI RACHMAT, CHIKAYA SAKAI
  34. Long-term variability of zooplankton community under climate warming in tropical eutrophic man-made lake [PDF]  
SUNARDI, TAKAO YOSHIMATSU, NIKO JUNIANTO, NADIA ISTIQAMAH, TYRELL DEWEBER
  35. Short Communication: Fish diversity of the Batang Toru River System, South Tapanuli, North Sumatra [PDF]  
DEWI IMELDA ROESMA, ADA CHORNELIA, AHMAD MURSYID, MISTAR KAMSI
  36. Antidiabetic screening of some Indonesian marine cyanobacteria collection [PDF]  
SRI PRIATNI, THELMA A. BUDIWATI, DIAH RATNANINGRUM, WAWAN KOSASIH, RINA ANDRYANI, HANI SUSANTI, DWI SUSILANINGSIH
  37. Data provision of PIK3CA gene diversity and recombinant plasmids preparation for control DNA in developing the trastuzumab predictive response diagnostic kit [PDF]  
DESRANI, BUGI RATNO BUDIARTO, WIRMA ARIF HARAHAP, M. ALI WARISMAN, AUDREY VANIA CLARISSA OMPUSUNGGU, DINA ATHARIAH, FARIDA MIRNAWATI, IDA YUSSRIYANI, FUAD ALAHWANI, AHMAD RIZQI KURNIAWAN
  38. Short Communication: Using ITS as a molecular marker for *Mangifera* species identification in Central Sumatra [PDF]  
FITMAWATI, IBNA HAYATI, NERY SOFIYANTI
  39. The water quality parameters controlling diatoms assemblage in Rawapening Lake, Indonesia [PDF]  
T.R. SOEPROBOWATI, S.D. TANDJUNG, SUTIKNO, S. HADISUSANTO, P. GELL, HADIYANTO, S.W.A. SUEDEY
  40. Freshwater fish diversity in an oil palm concession area in Mimika, Papua [PDF]  
HENDERITE L. OHEE
  41. The abundance of phytoplankton and its relationship to the N/P ratio in Jakarta Bay, Indonesia [PDF]  
TUMPAK SIDABUTAR, DIETRIECH G. BENGEN, SAM WOUTHUYZEN, TRI PARTONO
  42. Biological characteristics on three demersal fish landed in Tegal, north coast of Central Java, Indonesia [PDF]  
DUTO NUGROHO, MUFTI P. PATRIA, JATNA SUPRIATNA, LUKY ADRIANTO
  43. Short Communication: RAPD fingerprinting key and phylogenetic of nine seagrass species from Sanur coastal water, Bali, Indonesia using matK sequences [PDF]  
MADE PHARMAWATI, UUL SHOVI NURKAMILA, STEVANUS
  44. Ethnoastronomy-The Baduy agricultural calendar and prediction of environmental perturbations [PDF]  
JOHAN ISKANDAR, BUDIAWATI S. ISKANDAR

45. The diversity of secondary metabolites in Indonesian soybean genotypes [\[PDF\]](#)  
ERIYANTO YUSNAWAN
46. Short Communication: Identification of Growth Hormone gene polymorphism for beef cattle in Pesisir Selatan District, West Sumatra, Indonesia [\[PDF\]](#)  
DINO EKA PUTRA, SUMAD, TAKUYA KANAZAWA, TETY HARTATIK
47. Review: Persistent pioneers: *Borassus* L. and *Corypha* L. in Malesia [\[PDF\]](#)  
GRAHAM E. EAGLETON
48. *Syzygium* diversity in Gunung Baung, East Java, Indonesia [\[PDF\]](#)  
DEDEN MUDIANA
49. Short Communication: The survival rate and one-year growth of *Shorea javanica*, *Shorea macrobalanos* and *Hopea mengarawanin* coal mined land in Central Bengkulu, Indonesia [\[PDF\]](#)  
WIRYONO, HERY SUHARTOYO, ALI MUNAWAR
50. Insect pollinator diversity along a habitat quality gradient on Mount Slamet, Central Java, Indonesia [\[PDF\]](#)  
IMAM WIDHIONO, EMING SUDIANA, EDY TRI SUCIANTO
51. Markers-traits association for iron toxicity tolerance in selected Indonesian rice varieties [\[PDF\]](#)  
YUDHISTIRA NUGRAHA, DWINITA W. UTAMI, IDA ROSDIANTI, SINTHO WAHYUNING ARDIE, MUNIF GHULAMMAHDI, SUWARNO, HAJRIAL ASWIDINNOOR
52. Prospect of indigenous plant species for revegetation in the tailings area of ex community gold mine [\[PDF\]](#)  
WIWIK EKYASTUTI, DWI ASTIANI, EMI ROSLINDA
53. Comparison of *Neurospora crassa* and *Neurospora sitophila* for phytase production at various fermentation temperatures [\[PDF\]](#)  
ATIT KANTI, I MADE SUDIANA
54. Four new varieties of *Begonia* from interspecific hybridization *Begonia natunaensis* C.W.Lin & C.I.Peng x *Begonia puspitae* Ardi [\[PDF\]](#)  
HARTUTININGSIH-M. SIREGAR
55. Human-Leopard Conflict in Girimukti Village, Sukabumi, Indonesia [\[PDF\]](#)  
RUHYAT PARTASASMITA, SYA SYA SHANIDA, JOHAN ISKANDAR, ERRI NOVIAR MEGANTARA, TEGUH HUSODO, PARIKESIT, NICHOLAS MALONE
56. The value of secondary forest patches for bird conservation in palm oil landscapes of Riau, Sumatra [\[PDF\]](#)  
ERNIWATI, ERVIZAL AMIR MUHAMMAD ZUHUD, YANTO SANTOSA, ISWANDI ANAS
57. Short Communication: Spiders of Sabah: Fifty new records including the description of a new Leucauge species [\[PDF\]](#)  
DZULHELMI MUHAMMAD NASIR, WONG CHUN XING, ASRAF BAKRI, FASZLY RAHIM, NORMA-RASHID YUSOFF
58. The length-weight correlation and population dynamics of razor clams (*Solen regularis*) in Surabaya east coast, Indonesia [\[PDF\]](#)  
NINIS TRISYANI, ENDANG YULI HERAWATI, MAHENO SRI WIDODO, DADUK SETYOHADI
59. Wati (*Piper methysticum*) medicinal plant: The ethnobiological and ethnomedicinal values of the Marind tribe in Merauke, Papua, Indonesia [\[PDF\]](#)  
SUHARNO, ROSYE HEFMY RECHNELTY TANJUNG, SUPENI SUFAATI, VERENA AGUSTINI
60. Handicraft of butterflies and moths (Insecta: Lepidoptera) in Bantimurung Nature Recreation Park and its implications on conservation [\[PDF\]](#)  
INDRA A.S.L.P. PUTRI
61. Botanical survey in thirteen montane forests of Bawean Island Nature Reserve, East Java Indonesia: Flora diversity, conservation status, and bioprospecting [\[PDF\]](#)  
TRIMANTO, LIA HAPSARI
62. Temporal diversity of *Taraxacum kok-saghyz* plants reveals high rubber yield phenotypes [\[PDF\]](#)  
KATRINA CORNISH, STEVEN L. KOPICKY, SARAH K. MCNULTY, NIKITA AMSTUTZ, ANN M. CHANON, SONIA WALKER, MATTHEW D. KLEINHENZ, ALBERT R. MILLER, JOHN G. STREETER
63. Polycyclic aromatic hydrocarbon degrading bacteria from the Indonesian Marine Environment [\[PDF\]](#)  
ELVI YETTI, AHMAD THONTOWI, YOPI
64. Crown shape dynamics of dense mangrove *Kandelia obovata* stands in Manko Wetland, Okinawa Island, Japan [\[PDF\]](#)  
KANGKUSO ANALUDDIN, ANDI SEPTIANA, SAHADEV SHARMA, AKIO HAGIHARA
65. The utilization of bioresources by local communities at Giam Siak Kecil-Bukit Batu Biosphere Reserve, Riau Province, Indonesia [\[PDF\]](#)  
PRIMA WAHYU TITISARI, TATI SURYATI SYAMSUDIN, ACHMAD SJARMIDI
66. Spatial and temporal description of water pollution status of Gajah Mungkur Reservoir Wonogiri, Central Java, Indonesia [\[PDF\]](#)  
WIRYANTO
67. Morphological diversity and the cultivation practice of *Abelmoschus manihoti* in West Papua, Indonesia [\[PDF\]](#)  
SARASWATI PRABAWARDANI, IRNANDA A.F. DJUUNA, FENNY ASYEREM, ALEXANDER YAKU, GRAHAM LYONS
68. The ethnobotany of medicinal plants in supporting the family health in Turgo, Yogyakarta, Indonesia [\[PDF\]](#)  
MAIZER SAID NAHDI, IKA NUGRAHENI ARI MARTIWI, DISCA CAHYARI ARSYAH
69. Bacterial spatial distribution in the sediments of Gajah Mungkur Reservoir, Central Java, Indonesia [\[PDF\]](#)  
PENI PUJIASTUTI, MASYKURI MASYKURI, TOTOK GUNAWAN, SUTARNO

Print on Demand [\[PDF\]](#)

Print on demand [\[PDF\]](#)





# Insect pollinator diversity along a habitat quality gradient on Mount Slamet, Central Java, Indonesia

IMAM WIDHIONO, EMING SUDIANA, EDY TRI SUCIANTO

Faculty of Biology, Universitas Jenderal Soedirman. Jl. Dr. Soeparno No. 68, Purwokerto, Banyumas 53122, Central Java, Indonesia. Tel. +62-281-638794, Fax: +62-281-631700, email: imamwidhiono@yahoo.com

Manuscript received: 28 February 2016. Revision accepted: 8 September 2016.

**Abstract.** Widhiono I, Sudiana E, Suciato ET. 2016. Insect pollinator diversity along a habitat quality gradient on Mount Slamet, Central Java, Indonesia. *Biodiversitas* 17: 746-752. The diversity of wild bees and wasps in seven habitat types (natural forest, teak forest, pine forest, Agathis forest, community forest, gardens, and agricultural areas) representing the habitat quality gradient of Mount Slamet and adjacent areas in Central Java, Indonesia, was studied from April to June 2012. We examined whether habitat quality affected the diversity of wild bees and wasp pollinators. In total, 938 wild bee and wasp specimens representing 13 species of bees and 2 species of wasps were collected using kite netting. Wild bee diversity differed significantly among the habitat types ( $F_{6,281} = 1.2$   $p < 0.05$ ). The Spearman's correlation coefficients confirmed that wild bee diversity was correlated with habitat quality ( $r^2 = 0.67$   $p < 0.05$ ). Habitats that included all of the major wild plant species supported the highest wild bee diversity.

**Keywords:** Kite netting, major wild plant species, species richness, wasp, wild bee

## INTRODUCTION

Mount Slamet (3,428 m asl.) is the highest mountain in Java and is located in the southwest of Central Java province. Previously, this area was covered with plantations and natural forest under the management of Perum Perhutani (The State Forest Agency). Following political and economic instability in Indonesia in 1998, a forested area on the lower portion of this mountain was converted into agricultural land dominated by vegetable crops that require insect pollinators to produce better fruits. A recent study by Widhiono and Sudiana (2015) recorded 17 insect pollinators, predominantly wild bees, visiting vegetable crops. The agricultural area is surrounded by a mosaic of other land-use types that can act as habitats for wild bees, especially forested habitat. Conversion of forested areas to agricultural habitats results in habitat simplification, which can affect the diversity and abundance of insect pollinators due to changes in wild plant diversity and abundance. These differences, in turn, affect the availability of pollen and nectar, which are vital resources for insect pollinators.

Habitat quality is usually measured as plant species richness or abundance. Plants are needed by insects for food and reproduction, and their species richness and abundance significantly affect the diversity of insect pollinators (Potts et al. 2003; Kleintjes et al. 2006; Campbell and Husband 2007). Natural and seminatural (forested) habitats are often critical to the overall species richness of insect pollinators (Hendrickx et al. 2007; Billeter et al. 2008). Wild bee species richness was found to be higher in disturbed forests than in primary forests in tropical Southeast Asia (Liow et al. 2001; Steffan-

Dewenter and Tscharntke 2001; Thomas 2001). Comparative studies of a broad range of habitats along a land-use intensification gradient from primary forest to plantation forest, community forest, gardens, and agricultural areas, have generally focused on plant density or flower abundance, and to the best of our knowledge, no studies have examined local wild plant species acting as key factors in supporting the diversity of wild bees.

Furthermore, especially in Indonesia, no studies have addressed the quality of natural, semi-natural, or non-crop habitats and their relationships with insect pollinator diversity, despite the fact that wild bees are responsible for the majority of the pollination of cultivated plants in the region. Widhiono and Sudiana (2015) identified 42 species of wild plants on Mount Slamet and in adjacent areas, 24 of which are visited by wild bees and wasps. Of these 24 species, 8 species (hereafter referred to as the "major wild plant species") were visited by more than one wild bee species: *Cleome ruidosperma* (Cleomeaceae), *Borreria laevicaulis* (Rubiaceae), *Barleria elegans* (Acanthaceae), *Euphorbia heterophylla* (Euphorbiaceae), *Rubus parviflorus* (Rosaceae), *Salomonium cantoniensis* (Polygalaceae), *Tridax procumbens* (Asteraceae) and *Vero cinerea* (Asteraceae). In this study, we defined habitat quality as the species richness and the density of the major wild plant species used for food by insect pollinators. We examined whether habitat quality affects the species richness and abundance of wild bees and wasp pollinators in different habitat types on Mount Slamet, and hypothesized that the habitat types with the highest species richness and density of the major wild plant species support the highest diversity and abundance of wild bees and wasps.

## MATERIALS AND METHODS

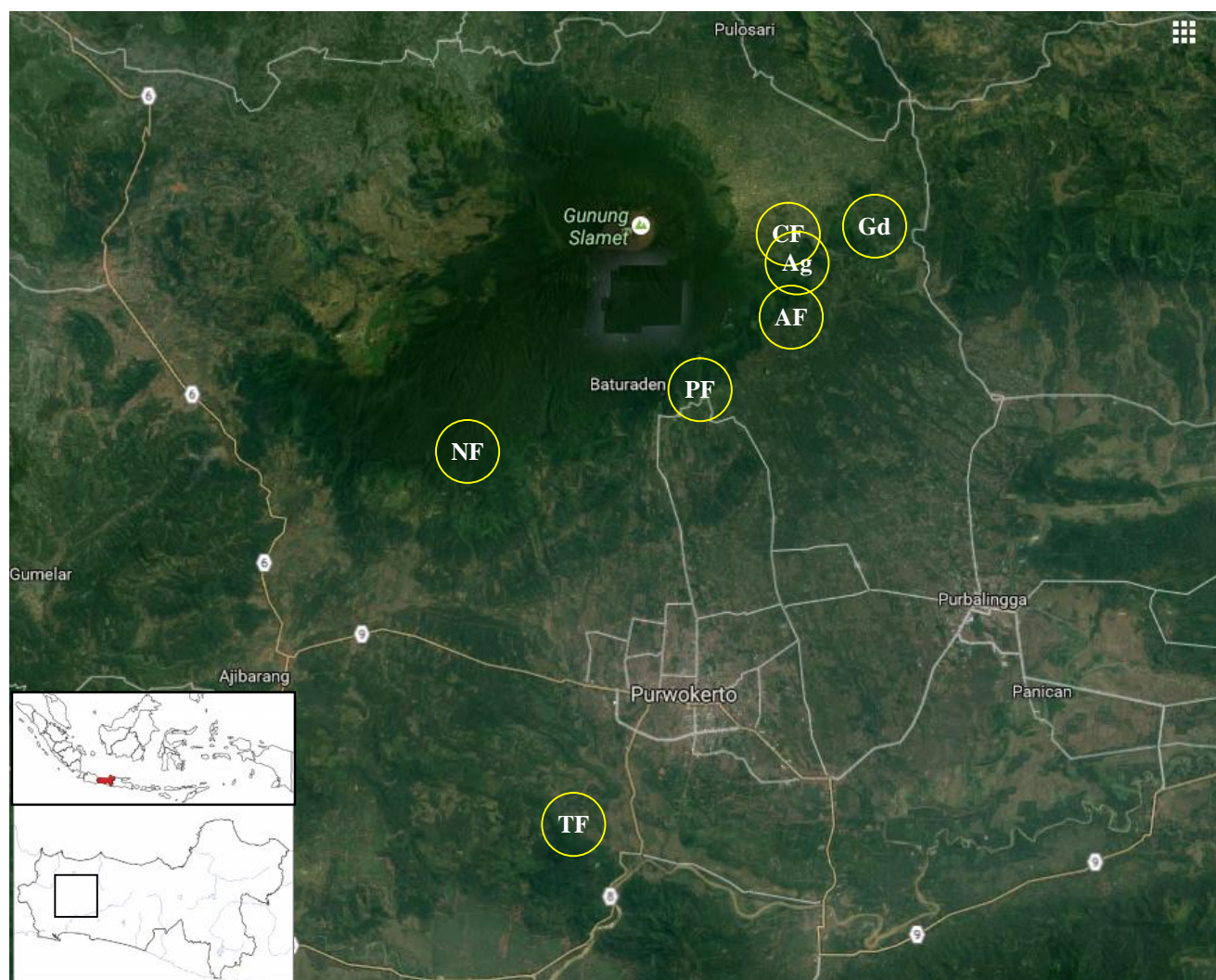
### Study area

The study was conducted from April to June 2012 in the East Banyumas Forest Management Unit of the State Forest Agency (Perum Perhutani), on the southern and northern slopes of Mount Slamet, Central Java, Indonesia. The area lies at approximately 7°18'23.72"S, 109°14'06.51"E at 600–800 m asl. We surveyed seven different habitat types in our study area encompassing a range of wild plant species richness and abundance. The total size of study area was 17 ha, and the habitat types were classified as natural forest (NF, 5 ha), teak forest (TF, 2.5 ha), pine forest (PF, 2.5 ha), *Agathis* forest (2.5 ha), community forest (2.5 ha), gardens (G, 0.5 ha), and agricultural areas (Ag, 1.5 ha).

### Sampling protocol

Each habitat type was divided into five random transects, each 5 m wide and 100 m long. The number of

wild bees and wasps (Hymenoptera) was recorded during the morning between 6:00 a.m. and 12:00 p.m. in a standardized manner along transects. Sampling was conducted by sweep-netting in the herbaceous layers and understoreys of the plots, twice a month (total sampling six times/transect). Where possible, all bees observed were captured, and the plant visited by each bee was noted. Following each insect survey, the wild plant species richness and density were recorded in each subplot. Because some of our data were collected by nonexpert insect enthusiasts, we were limited in our taxonomic resolution. Some insects could be identified to species level with the help of a Hymenopteran taxonomist from the Indonesian Academy of Sciences, Bogor. Samples of the wild plants were stored for identification in the Plant Taxonomy Laboratory, Faculty of Biology, Universitas Jenderal Soedirman, Purwokerto, Banyumas, Central Java, Indonesia; used standard literatures for Java plants such as Backer and Bakhuizen van den Brink (1963–1968) and Steenis (1972).



**Figure 1.** Study site, seven habitat types on Mount Slamet, Banyumas and Purbalingga regencies, Central Java

**Table 1.** Description of seven habitat types on Mount Slamet, Central Java, Indonesia

Habitat	Location	Main vegetation	Wild plant species	Wild plant densities (stdev)
Natural Forest (NF)	7°20'13.54"S, 109°08'01.06"E, 719 m asl.	19-20 tropical tree species	36 species	70.52 ± 39.88 ind/sp.
Teak Forest (TF)	7°29'11.56"S, 109°11'34.85"E, 239 m asl.	<i>Tectona grandis</i>	36 species	67.80 ± 32.88 ind/sp.
Pine Forest (PF)	7°16'52.23"S, 109°15'56.44"E, 929 m asl.	<i>Pinus merkusii</i>	27 species	42.69 ± 47.33 ind/sp.
Agathis Forest (AF)	7°17'53.19"S, 109°14'54.62"E, 834 m asl.	<i>Agathis dammara</i>	23 species	42.69 ± 47.33 ind/sp.
Community Forest (CF)	7°14'34.86"S, 109°18'12.46"E, 1081 m asl.	<i>Albazia cinensis</i>	33 species	45.69 ± 29.93 ind/sp.
Gardens (Gd)	7°14'13.11"S, 109°18'12.15"E, 954 m asl.	Ornamental plants	25 species	45.69 ± 29.93 ind/sp.
Agricultural Areas(Ag)	7°15'01.12"S, 109°17'58.53"E, 954 m asl.	Cash crops	26 species	15.83 ± 22.69 ind/sp.

### Data analysis

To compare the overall community structure of the insect and wild plant taxa among the habitats, we calculated the accumulated species richness, total abundance, and alpha diversity (Shannon H', Simpson D, and Evenness [E]) for the seven habitats after pooling of data set. We calculated the alpha diversity using the Shannon-Wiener diversity index, a measure that takes into account the proportional abundance of each species (Margurran 1988). Comparisons of the species compositions among the different forest habitats were performed using single linkage cluster analysis based on the Bray-Curtis similarity. Diversity parameters were calculated using the Biodiversity Pro2 software (McAleece et al. 1997). We used the Spearman's rank correlation coefficients to determine whether insect species richness and abundance were significantly correlated with wild plant diversity and abundance.

## RESULTS AND DISCUSSION

Herbaceous wild plant species richness and density varied among the examined habitat types (Figure 1), ranging from 23 species in AF to 36 species in NF and CF, and from 114 individuals/100 m<sup>2</sup> in Ag to 507 individuals/100 m<sup>2</sup> in NF, respectively. The distribution, species richness, and abundance of the major wild plant species showed significant differences among the habitat types. The most abundant family was Asteraceae, with 11 species, followed by Fabaceae, with 3 species. Seven families were represented by two species each, and nine families were represented by one species each. All of the eight major wild plant species occurred in NF, TF, and CF, whereas only three of these species were found in PF and AF.

Differences in the species richness of the major wild plant species among habitats are caused by the habitat preferences of these plants. Almost all of these wild plants are abundant in sunny or slightly shaded habitats, generally corresponding to young secondary vegetation (Nwaogaranya and Mbaekwe 2015). The forest understory is a heterogeneous and dynamic habitat, within which the bulk of species contribute to ecosystem functioning and sustenance (Sharma 2013). The observed differences in plant species richness can be explained by the responses to environmental variables in the habitats. The major environmental factors that influence the growth of

vegetation are sunlight, water, and nutrients, which are the primary drivers of plant species richness at the local scale (Pausas and Austin 2001). Among the forested habitats, the lowest richness of herbaceous wild plant species was found in AF and PF, in agreement with the results reported by Nahdi (2014), who observed low herbaceous species richness in PF and AF in Yogyakarta. The low abundance of wild plants in AF may due to land-management practices, including the application of fertilizer, mowing, and weed control, that lead to greater availability of nutrients, which benefits only a few plant species. The use of mowing and weed control practices to exclude outcompeted plant species changes plant species assemblages, reducing plant diversity and resulting in reduced plant species richness and an altered plant community composition (Williams et al. 2010).

Wild bee and wasp abundances differed significantly among the habitats ( $F_{6,281} = 1.2$ ,  $p < 0.05$ ). The highest abundance was observed in NF, with 229 individuals (24.41%), followed by CF, with 171 individuals (18.2%), Gd, with 162 individuals (17.2%), TF, with 161 individuals (17.16%), Ag, with 91 individuals (9.7 %), and AF, with 66 individuals (7.03%). The lowest abundance occurred in PF, with only 58 individuals (6.1%). From Tukey HSD test showed that CF was the best habitats comparing to all others forest types (sig-0,015 <0.05) (Table 2). The Shannon-Wiener diversity index ( $H'$ ) indicated that CF had the highest diversity of wild bees ( $H' = 2.049$ ) (Table 3).

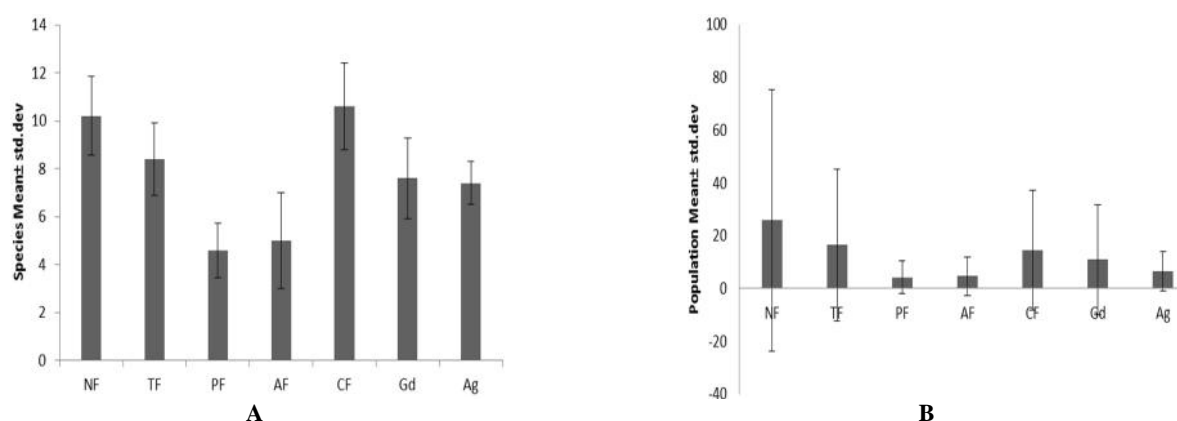
These findings are in agreement with those of Liow et al. (2001), who reported that bee abundance particularly that of Apidae, was significantly higher in CF than in other forested habitat types. However, our results were inconsistent with the findings of Hegland et al. (2009), who reported that local bee densities and diversities were highest in open land, followed by agroforestry systems, and were lowest in primary forests. Forested habitats offer nesting sites for many bee species (Klein et al. 2003; Brosi et al. 2007, 2008). This is demonstrated by the occurrence of *Apis dorsata* in only NF and TF habitats because this bee species prefers to build nests in the very tall trees found in these forest types (Starr et al. 1987; Tan 2007). Although open land provides better food resources in the herbaceous layer, bees often occur across different habitats that provide different resources (Tscharntke et al. 2005).

The intermediate abundance of wild bees observed in Gd and Ag indicates that mass-flowering crop species enhance wild plant populations, which provide floral



resources for pollinators in these habitats (Steffan-Dewenter and Westpal 2008) and that the dispersal ability of wild bees limits their abundance in agricultural fields (Carvalho 2010). These positive effects on bee populations occur in areas where agriculture increases the heterogeneity of habitat within the range of foraging bees (Kremen et al. 2007). The fact that the highest wild bee abundance was found in NF can be explained by the correlation between herbaceous vegetation density and habitat structure in NF.

The highest species richness was recorded in CF. The vegetation structure in CF was irregular, which resulted in a diverse canopy cover with a combination of forest and open land structures. This produced higher flower density and therefore a better food supply in the understory than is available in natural habitats (Potts et al. 2003; Bruna and Ribeiro 2005), resulting in greater bee richness and density. However, this result contrasts with the findings of Winfree (2007), who reported that open-land habitats exhibited the highest bee species richness and abundance compared with agroforestry and forest habitats.



**Figure 1.** Wild plant species (A) and Wild plant populations (B) in seven habitat types on Mount Slamet (mean ± SD)

**Table 2.** Total abundance of wild bees and wasps determined from a survey performed using insect nets (n = 15) in seven habitat types on Mount Slamet, Central Java, Indonesia

Family	Pollinator	Habitat type							Total	Relative abundance (%)
		NF	TF	PF	AF	CF	Gd	Ag		
Apidae	<i>Apis cerana</i>	78	50	19	21	50	66	27	311	33.1
	<i>Apis dorsata</i>	37	12	0	0	0	0	0	49	5.2
	<i>Trigona laeviceps</i>	60	47	0	0	47	43	0	197	21
	<i>Amegilla cingulata</i>	4	4	0	4	7	4	6	29	3
	<i>Amegilla zonata</i>	8	7	4	3	6	1	0	29	3
	<i>Nomia melanderi</i>	3	3	2	5	5	3	6	27	2.8
	<i>Ceratina nigrolateralis</i>	5	3	0	9	4	9	14	44	4.6
Megachilidae	<i>Megachile relativa</i>	15	16	11	11	12	6	4	75	7.9
Halictidae	<i>Lasioglossum malachurum</i>	0	0	7	0	6	11	6	30	3.1
	<i>Lasioglossum leucozonium</i>	0	0	8	0	13	7	10	38	4.05
	<i>Ropalidia fasciata</i>	0	0	0	3	3	7	1	14	1.4
Colletidae	<i>Hylaeus modestus</i>	2	0	0	0	0	0	0	2	0.02
Anthophoridae	<i>Xylocopa confusa</i>	0	0	0	0	11	0	12	23	2.4
Vespidae	<i>Delta campaniforme</i>	10	9	0	4	1	0	0	24	2.5
	<i>Polistes fuscata</i>	7	10	7	6	6	5	5	46	4.9

**Table 3.** Diversity parameters of wild bees in seven habitat types on Mount Slamet, Central Java

Parameter	Habitat type						
	NF	TF	PF	AF	CF	GD	AG
Species	11	10	7	9	13	11	10
Shannon H'	1.804	1.856	1.765	1.969	2.049	1.759	2.042
Simpsons (D)	0.217	0.202	0.183	0.160	0.178	0.247	0.150
Evenness (E = H'/ln s)	0.752	0.806	0.907	0.896	0.799	0.733	0.887

Our results show that CF is an important secondary habitat for wild bees ( $H' = 2.049$ ). The Spearman's correlation coefficients showed that insect pollinators species richness and abundances were correlated with wild plant species richness ( $r^2 = 0.67$ ,  $p < 0.05$  and  $r^2 = 0.63$ ,  $p < 0.05$ , respectively). Our results highlight the importance of wild plant species richness in the habitat for supporting wild bee species richness and abundance; however, this is only true for habitats with low species diversity, such as AF, PF, Gd, and Ag. The positive impact of wild plant richness on pollinator species richness can be explained by increased floral resource heterogeneity, which increases the attractiveness for many pollinator species seeking both single and multiple resources (Tscharntke et al. 1998; Potts et al. 2003). In forested habitats (NF and TF), we also found that wild bee diversity was affected by wild plant abundance ( $r^2 = 0.68$ ,  $p < 0.05$ ), supporting the hypothesis that high floral density within a habitat increases wild bee diversity because greater floral abundance means higher resource availability for pollinators. Previous studies have reported that wild plant abundance is one of two key variables structuring pollinator communities (Potts et al. 2003, 2010).

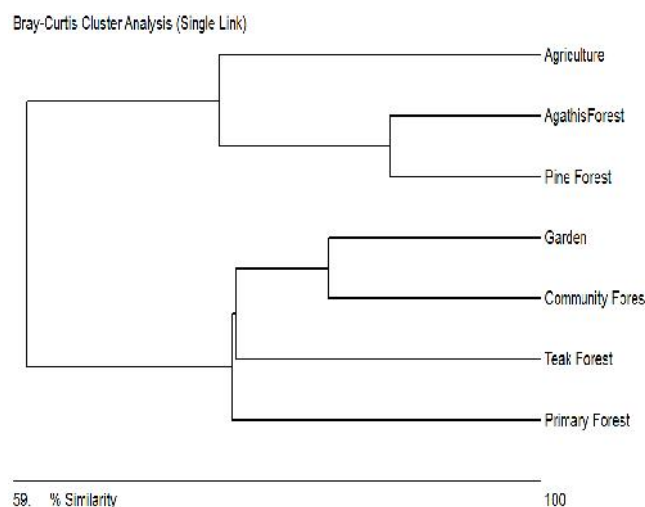
Our results were consistent with earlier studies performed by Steffan-Dewenter and Tscharntke (2001) in successional fallows and wheat fields (Holzschuh et al. 2007), where bee abundance was reported to increase with plant species richness and abundance (Buri et al. 2014). However, the results from our study are inconsistent with those of Hegland and Boeke (2006), who reported no significant effects of plant species richness on pollinator species richness.

The abundance of the major wild plant species did not affect wild bee diversity ( $r^2 = 0.44$ ,  $p < 0.05$ ). This finding can be explained by floral density's being more important than species richness because the availability of the main food resources (nectar and pollen) has a greater impact on the pollinators, as was reported by Hegland and Boeke (2006). Habitats with a high density of flowering plants are more attractive to pollinators than are those with a high diversity of flowering plants due to the lower travel time between multiple sparse patches in the former. Pollinators also tend to change their foraging behavior in response to flowering plant density to maximize nectar or pollen acquisition (Elliott and Irwin 2009).

*Apis cerana* was the most abundant and dominant species in all of the examined habitat types, with a total of 331 individuals (33.1%), followed by *Trigona laeviceps*, with 197 individuals (21.0%), whereas *Hylaeus modestus* had the lowest abundance, with only 2 individuals (0.02%). The most numerous family of pollinating insects in the investigated habitats was Apidae, with seven species, followed by Halictidae, with three species, and Vespidae, with two species. The least numerous were Megachilidae, Colletidae, and Anthophoridae, with only one species each. Only three species were found in all of the studied habitats. All of the pollinator taxa recorded in this study is categorized as generalist pollinators, i.e., they visit several plant species, and these pollinator species exhibit a wide range of floral choices and nesting requirements, which is

advantageous for switching to alternative resources (Maldonado et al. 2013). Native bees, which are generally specialists and can be solitary, are present in smaller numbers in nature. Comparison of the solitary bee communities observed in this study showed that *Amegilla cingulata*, *Nomia melanderi*, *Ceratina* sp., *Lasioglossum malachurum*, *L. leucozonium*, and *Xylocopa latipes* were present in the highest numbers in artificial habitats (CF, Gd, and Ag) due to their habit of nesting in the soft mortar of building walls, whereas the genera *Apis* and *Trigona*, as well as genera of solitary bees with some tendency toward communalism (Xylocopinae) and subsocial behavior (Family Halictidae, tribes Augochlorini and Halictini), nest in pre-existing cavities in tree trunks or decomposing wood, or on the ground in banks or flat areas (Souza and Campos 2008). Multidimensional scaling supported this finding; bee communities in habitats with high wild plant species richness and abundance (NF, TF, CF, and Gd) included a wider variety of species compositions, whereas those in habitats with low wild plant species richness and abundance exhibited low species diversity. CF and Gd maintain high regional species richness due to diverse management practices and moderate disturbance intensity, which enhances floral species abundance and spatio-temporal habitat heterogeneity.

The similarity of the wild bee species among the habitats based on the Bray-Curtis index ranged from 31.5% to 80.56%. We observed an 80.56% overlap between NF and TF and an 80.54% overlap between PF and AF. TF had 79% similarity with CF. These results indicate high similarity in the respective wild plant communities. Clustering of the similarities of wild bees among the habitat types showed that the wild bee community could be divided into the following three groups: NF and TF; Gd and CF; and AG, AF, and PF (Figure 2).



**Figure 2.** Similarity of wild bee species composition among habitats using Bray-Curtis analysis (single linkage)

In conclusion, the quality of the investigated habitats differed in terms of their relative contributions to wild bee diversity. The wild bee diversity in habitats with few wild plant species was strongly correlated with wild plant diversity, whereas in habitats with high wild plant species richness, flowering plant abundance was more important. The number of wild bee taxa recorded in the studied habitats showed that the diversity of wild plants species in these areas was fairly high and that the quality of the habitats in terms of plant species richness was important in maintaining pollinator diversity, both for solitary wild bee species and for eusocial wild bees.

## ACKNOWLEDGMENTS

We are grateful to Akhmad Iqbal, Totok Agung, Soewarto, and Yulia Sistina for their support in securing funding for this research, and to all of the students who assisted in collecting field data. This research was supported by a Directorate General of Higher Education Research Fellowship and funding from the Universitas Jenderal Soedirman, Purwokerto, Central Java, Indonesia. The authors declare that there are no conflicts of interest regarding the publication of this paper.

## REFERENCES

- Backer CA, Bakhuizen van den Brink RCJr. 1963-1968. Flora of Java (Spermatophytes only). P. Noordhoff, Groningen
- Billeter R, Liira J, Bailey D, Bugter R, P. Arens P, Augenstein I, Aviron S, Baudry J, Bukacek R, Burel F, Cerny M, De Blust G, De Cock R, Diekötter T, Dietz H, Dirksen J, Dormann C, Durka W, Frenzel M, Hamersky R, Hendrickx F, Herzog F, Klotz S, Koolstra B, Lausch A, Le Coeur D, Maelfait JP, Opdam P, Roubalova M, Schermann A, Schermann N, Schmidt T, Schweiger O, Smulders MJM, Speelmans M, Simova P, Verboom J, W van Wingerden W, Zobel M, Edwards PJ. 2008. Indicators for biodiversity in agricultural landscapes: a pan-European study. *J Appl Ecol* 45: 141-150.
- Brosi B J, Daily G C, Ehrlich P R. 2007. Bee community shifts with landscape context in tropical countryside. *Ecol Appl* 17: 418-430.
- Brosi B J, Daily G C, Shih T M, Oviedo F, Durán G. 2008. The effects of forest fragmentation on bee communities in tropical countryside. *J Appl Ecol* 45: 773-783.
- Bruna EM, Ribeiro MBN. 2005. The compensatory responses of an understory herb to experimental damage are habitat-dependent. *Am J Bot* 92: 2101-2106.
- Buri P, Humbert YY, Arlettaz R. 2014. Promoting pollinating insects in intensive agricultural matrices: field-scale experimental manipulation of hay-meadow mowing regimes and its effects on bees. *PloS one* 9: e85635. DOI: 10.1371/journal.pone.0085635.
- Campbell LG, Husband BC. 2007. Small populations are mate-poor but pollinator-rich in a rare, self-incompatible plant, *Hymenoxys herbacea* (Asteraceae). *New Phytol* 174: 915-925.
- Carvalho LG, Seymour CL, Veldtman R, Nicolson SW. 2010. Pollination services decline with distance from natural habitat even in biodiversity-rich areas. *J Appl Ecol* 47: 810-820.
- Elliott SE, Irwin RE. 2009. Effects of flowering plant density on pollinator visitation, pollen receipt, and seed production *Indelphinium barbeyi* (Ranunculaceae). *Am J Bot* 96: 912-919.
- Hegland SJ, Boeke L. 2006. Relationships between the density and diversity of floral resources and flower visitor activity in a temperate grassland community. *Ecol Entomol* 31: 532-538.
- Hegland SJ, Nielson A, Lazaro A, Bjekers AL, Totland O. 2009. How does climate warming affect plant-pollinator interactions? *Ecol Lett* 12: 184-195.
- Hendrickx F, Maelfait JP, Van Wingerden W, Schweiger O, Speelmans M, Aviron S, Augenstein I, Billeter R, Bailey D, Bukacek R, Burel F, Diekötter T, Dirksen J, Herzog F, Liira J, Roubalova M, Vandomme V, Bugter R. 2007. How landscape structure, land-use intensity and habitat diversity affect components of total arthropod diversity in agricultural landscapes. *J Appl Ecol* 44: 340-351.
- Holzschuh A, Steffan-Dewenter I, Kleijn D, Tscharntke T. 2007. Diversity of flower-visiting bees in cereal fields: effects of farming system, landscape composition and regional context. *J Appl Ecol* 44: 41-49.
- Klein AM, Steffan-Dewenter I, Tscharntke T. 2003. Flower visitation and fruit set of *Coffea canephora* in relation to local and regional agroforestry management. *J Appl Ecol* 40: 837-845.
- Kleintjes PK, Fetting SM, Vanoverbeke NB. 2006. Variable response of butterflies and vegetation to elk herbivory: an enclosure experiment in ponderosa pine and aspen-mixed conifer forests southwestern naturalist. *J Lepidopterists Soc* 52: 1-14.
- Kremen C, Williams NM, Aizen MA, Gemmill-Herren B, LeBuhn G, Minckley R, Packer L, Potts SG, Roulston T, Steffan-Dewenter I, Vázquez DP, Winfree R, Adams L, Crone EE, Greenleaf SS, Keitt TH, Klein AM, Regetz J, Ricketts TH. 2007. Pollination and other ecosystem services produced by mobile organisms: a conceptual framework for the effects of land-use change. *Ecol Lett* 10: 299-314.
- Liow LH, Sodhi NS, Elmqvist T. 2001. Bee diversity along a disturbance gradient in tropical lowland forests of South-East Asia. *J Appl Ecol* 38: 180-192.
- Maldonado MB, Lomascolo SB, Vazquez DP. 2013. The importance of pollinator generalization and abundance for the reproductive success of a generalist plant. *PloS One* 8: e75482. DOI: 10.1371/journal.pone.0075482.
- Margurran EA. 1988. Ecological Diversity and its Measurement. 1st ed. Chapman and Hall. London.
- McAleece N, Gage JDG, Lambhead PJD, Paterson GLJ. 1997. BioDiversity Professional statistics analysis software. Jointly developed by the Scottish Association for Marine Science and the Natural History Museum, London.
- Nahdi MS. 2014. The distribution and abundance of plant species under the shade of *Pinus merkusii*, *Acacia auriculiformis* and *Eucalyptus alba* in Giri Gama Mandiri forest, Yogyakarta. *Jurnal Natur Indonesia* 16: 33-41. [Indonesian]
- Nwaogaranya UP, Mbaekwe EI. 2015. Some aspects of the biology of *Vernonia cinerea* (Linn.) Less. *Int J Sci Res Publ* 5 (9):.
- Pausas JP, Austin MP. 2001. Patterns of plant species richness in relation to different environments: an appraisal. *J Veg Sci* 12: 153-166.
- Potts SG, Biesmeijer JC, Kremen C, Neumann P, Schweiger O, Kunin WE. 2010. Global pollinator declines: trends, impacts and drivers. *Trends Ecol Evol* 25: 345-353.
- Potts SG, Vulliamy B, Dafni A, Ne'eman G, Willmer P. 2003. Linking bees and flowers: how do floral communities structure pollinator communities? *Ecol* 84: 2628-2642.
- Sharma N. 2013. Dynamics and characterization of herbaceous vegetation in three forest communities in a subtropical dry deciduous forest in Jammu, Jammu and Kashmir. *Int J Sci Res* 2319-7064.
- Souza DE, Campos ME. 2008. Composition and diversity of bees (Hymenoptera) attracted by moericke traps in an agricultural area in Rio Claro, state of São Paulo, Brasil Iheringia. *Série Zoologia* 98: 236-243.
- Starr CK, Schmidt PJ, Schmidt J. 1987. Nest-site preferences of giant honey bee, *Apis dorsata* (Hymenoptera: Apidae), in Borneo. *Pan-Pacific Entomol* 63: 37-42.
- Steenis CGGJ van. 1972. The Mountain Flora of Java. E.J. Brill, Leiden.
- Steffan-Dewenter I, Tscharntke T. 2001. Succession of bee communities on fallows. *Ecography* 24: 83-93.
- Steffan-Dewenter I, Westpal C. 2008. The interplay of pollinator diversity, pollination services and landscape change. *J Appl Ecol* 45: 737-741.
- Tan NQ. 2007. Biology of *Apis dorsata* in Vietnam. *Apidologie* 38: 221-229.
- Thomas JA, Bourn NAD, Clarke RT, Stewart KE, Simcox D, Pearman GS, Curtis R, Goodger B. 2001. The quality and isolation of habitat patches both determine where butterflies persist in fragmented landscapes. *Proc R Soc London Ser B-Biol Sci* 268: 1791-1796.
- Tscharntke T, Gathmann A, Steffan-Dewenter I. 1998. Bioindication using trap-nesting bees and wasps and their natural enemies: community structure and interactions. *J Appl Ecol* 35: 708-719.

- Tscharntke T, Klein AM, Kruess A, Steffan-Dewenter I, Thies C. 2005. Landscape perspectives on agricultural intensification and biodiversity-ecosystem service management. *Ecol Lett* 8: 857-874.
- Widhiono I, Sudiana E. 2015. The role of wild plants in the conservation of pollinating insects of the Order Hymenoptera. *Pros Sem Nas Masy Biodiv Indon* 1: 1586-1590. [Indonesian]
- Williams NM, Crone EE, Roulston TH, Minckley RL, Packer I, Potts SG. 2010. Ecological and life-history traits predict bee species responses to environmental disturbances. *Biol Conserv* 143: 2280-2291.
- Winfree R, Griswold T, Kremen C. 2007. Effects of human disturbance on bee communities in a forested ecosystem. *Conserv Biol* 21: 213-223.

**TURNITIN**

# Insect pollinator diversity along a habitat quality gradient on Mount Slamet, Central Java, Indonesia

*by* Eming Sudiana

---

**Submission date:** 23-Aug-2020 10:58PM (UTC+0700)

**Submission ID:** 1372909267

**File name:** BIODIVERSITAS\_VOL\_17\_NO\_2\_2016\_\_ARTIKEL.pdf (227.51K)

**Word count:** 4790

**Character count:** 25097



11

## Insect pollinator diversity along a habitat quality gradient on Mount Slamet, Central Java, Indonesia

22

IMAM WIDHIONO<sup>1</sup>, EMING SUDIANA, EDY TRI SUCIANTO

Faculty of Biology, Universitas Jenderal Soedirman, Jl. Dr. Soeparno No. 68, Purwokerto, Banyumas 53122, Central Java, Indonesia. Tel. +62-281-638794, Fax: +62-281-631700, Email: imamwidhiono@yahoo.com

Manuscript received: 28 February 2016. Revision accepted: 8 September 2016.

11

**Abstract.** Widhiono I, Sudiana E, Suciato ET. 2016. Insect pollinator diversity along a habitat quality gradient on Mount Slamet, Central Java, Indonesia. *Biodiversitas* 17: 746-752. The diversity of wild bees and wasps in seven habitat types (natural forest, teak forest, pine forest, Agathis forest, community forest, gardens, and agricultural areas) representing the habitat quality gradient of Mount Slamet and adjacent areas in Central Java, Indonesia, was studied from April to June 2012. We examined whether habitat quality affected the diversity of wild bees and wasp pollinators. In total, 938 wild bee and wasp specimens representing 13 species of bees and 2 species of wasps were collected using kite netting. Wild bee diversity differed significantly among the habitat types ( $F_{6,281} = 1.2$   $p < 0.05$ ). The Spearman's correlation coefficients confirmed that wild bee diversity was correlated with habitat quality ( $r^2 = 0.67$   $p < 0.05$ ). Habitats that included all of the major wild plant species supported the highest wild bee diversity.

**Keywords:** Kite netting, major wild plant species, species richness, wasp, wild bee

### INTRODUCTION

Mount Slamet (3,428 m asl.) is the highest mountain in Java and is located in the southwest of Central Java province. Previously, this area was covered with plantations and natural forest under the management of Perum Perhutani (The State Forest Agency). Following political and economic instability in Indonesia in 1998, a forested area on the lower portion of this mountain was converted into agricultural land dominated by vegetables crops that require insect pollinators to produce better fruits. A recent study by Widhiono and Sudiana (2015) recorded 17 insect pollinators, predominantly wild bees, visiting vegetable crops. The agricultural area is surrounded by a mosaic of other land-use types that can act as habitats for wild bees, especially forested habitat. Conversion of forested areas to agricultural habitats results in habitat simplification, which can affect the diversity and abundance of insect pollinators due to changes in wild plant diversity and abundance. These differences, in turn, affect the availability of pollen and nectar, which are vital resources for insect pollinators.

Habitat quality is usually measured as plant species richness or abundance. Plants are needed by insects for food and reproduction, and their species richness and abundance significantly affect the diversity of insect pollinators (Potts et al. 2003; Kleintjes et al. 2006; Campbell and Husband 2007). Natural and seminatural (forested) habitats are often critical to the overall species richness of insect pollinators (Hendrickx et al. 2007; Billeter et al. 2008). Wild bee species richness was found to be higher in disturbed forests than in primary forests in tropical Southeast Asia (Liow et al. 2001; Steffan-

Dewenter and Tscharntke 2001; Thomas 2001). Comparative studies of a broad range of habitats along a land-use intensification gradient from primary forest to plantation forest, community forest, gardens, and agricultural areas, have generally focused on plant density or flower abundance, and to the best of our knowledge, no studies have examined local wild plant species acting as key factors in supporting the diversity of wild bees.

Furthermore, especially in Indonesia, no studies have addressed the quality of natural, semi-natural, or non-crop habitats and the relationships with insect pollinator diversity, despite the fact that wild bees are responsible for the majority of the pollination of cultivated plants in the region. Widhiono and Sudiana (2015) identified 42 species of wild plants on Mount Slamet and in adjacent areas, 24 of which are visited by wild bees and wasps. Of these 24 species, 8 species (hereafter referred to as the "major wild plant species") were visited by more than one wild bee species: *Cleome rutidosperma* (Cleomeaceae), *Borreria laevicaulis* (Rubiaceae), *Barleria elegans* (Acanthaceae), *Euphorbia heterophylla* (Euphorbiaceae), *Rubus parviflorus* (Rosaceae), *Salomonina cantoniensis* (Polygalaceae), *Tridax procumbens* (Asteraceae) and *Vero cinerea* (Asteraceae). In this study, we defined habitat quality as the species richness and the density of the major wild plant species used for food by insect pollinators. We examined whether habitat quality affects the species richness and abundance of wild bees and wasp pollinators in different habitat types on Mount Slamet, and hypothesized that the habitat types with the highest species richness and density of the major wild plant species support the highest diversity and abundance of wild bees and wasps.

## 35 MATERIALS AND METHODS

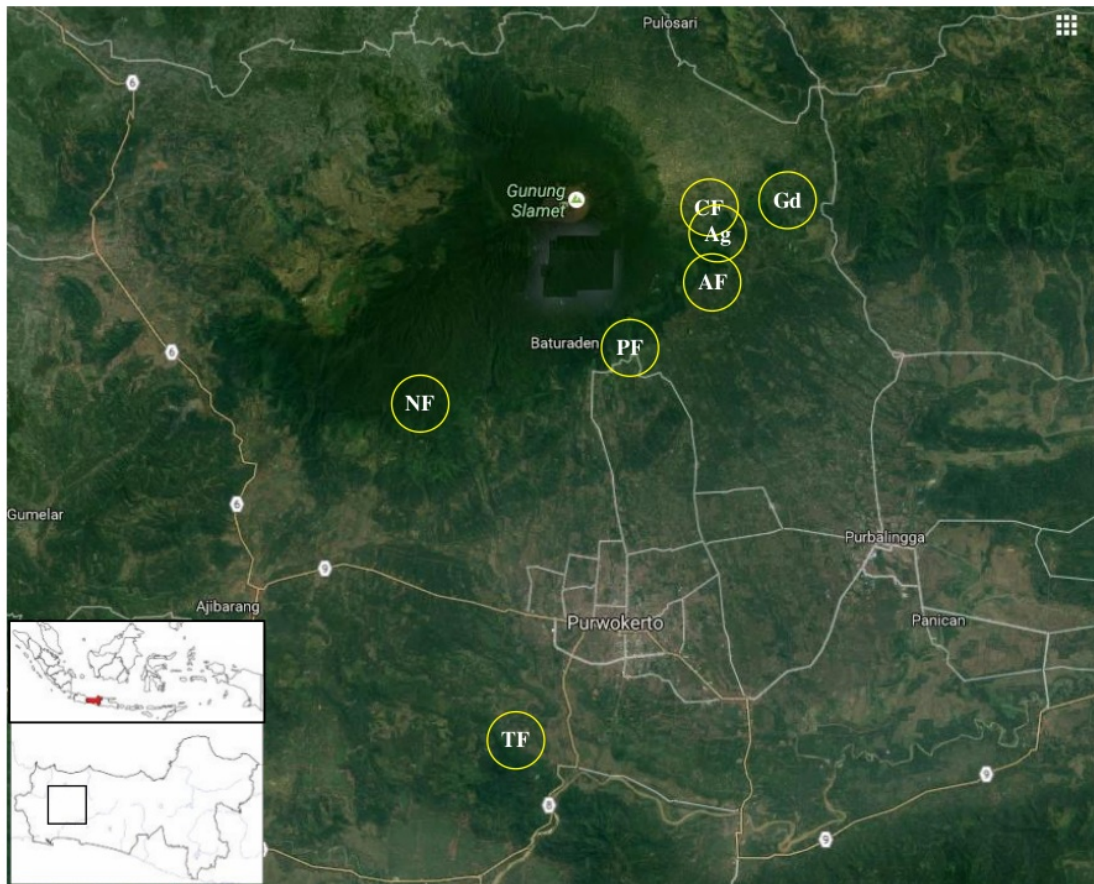
### Study area

The study was conducted from April to June 2012 in the East Banyumas Forest Management Unit of the State Forest Agency (Perum Perhutani), on the southern and northern slopes of Mount Slamet, Central Java, Indonesia. The area lies at approximately 7°18'23.72"S, 109°14'06.51"E at 600-800 m asl. We surveyed seven different habitat types in our study area encompassing a range of wild plant species richness and abundance. The total size of study area was 17 ha, and the habitat types were classified as natural forest (NF, 5 ha), teak forest (TF, 2.5 ha), pine forest (PF, 2.5 ha), *Agathis* forest (2.5 ha), community forest (2.5 ha), gardens (G, 0.5 ha), and agricultural areas (Ag, 1.5 ha).

### Sampling protocol

Each habitat type was divided into five random transects, each 5 m wide and 100 m long. The number of

wild bees and wasps (Hymenoptera) was recorded during the morning between 6:00 a.m. and 12:00 p.m. in a standardized manner along transects. Sampling was conducted by sweep-netting in the herbaceous layers and understoreys of the plots, twice a month (total sampling six times/transect). Where possible, all bees observed were captured, and the plant visited by each bee was noted. Following each insect survey, the wild plant species richness and density were recorded in each subplot. Because some of our data were collected by nonexpert insect enthusiasts, we were limited in our taxonomic resolution. Some insects could be identified to species level with the help of a Hymenopteran taxonomist from the Indonesian Academy of Sciences, Bogor. Samples of the wild plants were stored for identification in the Plant Taxonomy Laboratory, Faculty of Biology, Universitas Jenderal Soedirman, Purwokerto, Banyumas, Central Java, Indonesia; used standard literatures for Java plants such as Backer and Bakhuizen van den Brink (1963-1968) and Steenis (1972).



**Figure 1.** Study site, seven habitat types on Mount Slamet, Banyumas and Purbalingga regencies, Central Java



**Table 1.** Description of seven habitat types on Mount Slamet, Central Java, Indonesia

Habitat	Location	Main vegetation	Wild plant species	Wild plant densities (stdev)
Natural Forest (NF)	7°20'13.54"S, 109°08'01.06"E, 719 m asl.	19-20 tropical tree species	36 species	70.52 ± 39.88 ind/sp.
Teak Forest (TF)	7°29'11.56"S, 109°11'34.85"E, 239 m asl.	<i>Tectona grandis</i>	36 species	67.80 ± 32.88 ind/sp.
Pine Forest (PF)	7°16'52.23"S, 109°15'56.44"E, 929 m asl.	<i>Pinus merkusii</i>	27 species	42.69 ± 47.33 ind/sp.
Agathis Forest (AF)	7°17'53.19"S, 109°14'54.62"E, 834 m asl.	<i>Agathis dammara</i>	23 species	42.69 ± 47.33 ind/sp.
Community Forest (CF)	7°14'34.86"S, 109°18'12.46"E, 1081 m asl.	<i>Albazia cinensis</i>	33 species	45.69 ± 29.93 ind/sp.
Gardens (Gd)	7°14'13.11"S, 109°18'12.15"E, 954 m asl.	Ornamental plants	25 species	45.69 ± 29.93 ind/sp.
Agricultural Areas (Ag)	7°15'01.12"S, 109°17'58.53"E, 954 m asl.	Cash crops	26 species	15.83 ± 22.69 ind/sp.

### Data analysis

To compare the overall community structure of the insect and wild plant taxa among the habitats, we calculated the accumulated species richness, total abundance, and alpha diversity (Shannon H', Simpson D, and Evenness [E]) for the seven habitats after pooling of data set. We calculated the alpha diversity using the Shannon-Wiener diversity index, a measure that takes into account the proportional abundance of each species (Margurran 1988). Comparisons of the species compositions among the different forest habitats were performed using single linkage cluster analysis based on the Bray-Curtis similarity. Diversity parameters were calculated using the Biodiversity Pro2 software (McAleece et al. 1997). We used the Spearman's rank correlation coefficients to determine whether insect species richness and abundance were significantly correlated with wild plant diversity and abundance.

## RESULTS AND DISCUSSION

Herbaceous wild plant species richness and density varied among the examined habitat types (Figure 1), ranging from 23 species in AF to 36 species in NF and CF, and from 114 individuals/100 m<sup>2</sup> in Ag to 507 individuals/100 m<sup>2</sup> in NF, respectively. The distribution, species richness, and abundance of the major wild plant species showed significant differences among the habitat types. The most abundant family was Asteraceae, with 11 species, followed by Fabaceae, with 3 species. Seven families were represented by two species each, and nine families were represented by one species each. All of the eight major wild plant species occurred in NF, TF, and CF, whereas only three of these species were found in PF and AF.

Differences in the species richness of the major wild plant species among habitats are caused by the habitat preferences of these plants. Almost all of these wild plants are abundant in sunny or slightly shaded habitats, generally corresponding to young secondary vegetation (Nwaogaranya and Mbackwe 2015). The forest understory is a heterogeneous and dynamic habitat, within which the bulk of species contribute to ecosystem functioning and maintenance (Sharma 2013). The observed differences in plant species richness can be explained by the responses to environmental variables in the habitats. The major environmental factors that influence the growth of

vegetation are sunlight, water, and nutrients, which are the primary drivers of plant species richness at the local scale (Pausas and Austin 2001). Among the forested habitats, the lowest richness of herbaceous wild plant species was found in AF and PF, in agreement with the results reported by Nahdi (2014), who observed low herbaceous species richness in PF and AF in Yogyakarta. The low abundance of wild plants in AF may due to land-management practices, including the application of fertilizer, mowing, and weed control, that lead to greater availability of nutrients, which benefits only a few plant species. The use of mowing and weed control practices to exclude outcompeted plant species changes plant species assemblages, reducing plant diversity and resulting in reduced plant species richness and an altered plant community composition (Williams et al. 2010).

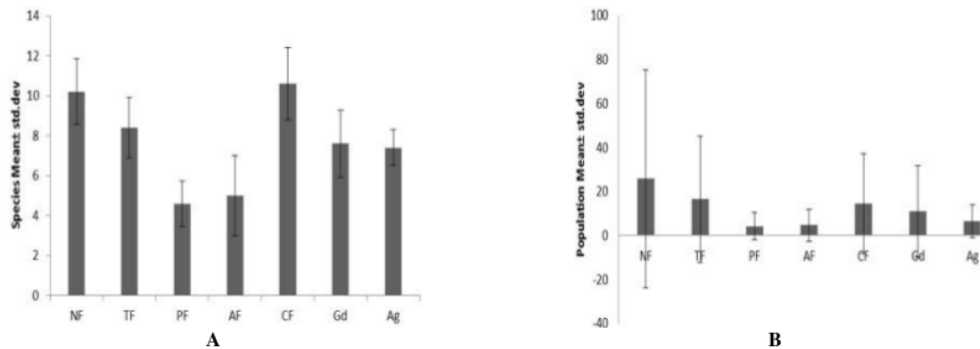
Wild bee and wasp abundances differed significantly among the habitats ( $F_{6,281} = 1.2$ ,  $p < 0.05$ ). The highest abundance was observed in NF, with 229 individuals (24.41%), followed by CF, with 171 individuals (18.2%), Gd, with 162 individuals (17.2%), TF, with 161 individuals (17.16%), Ag, with 91 individuals (9.7%), and AF, with 66 individuals (7.03%). The lowest abundance occurred in PF, with only 58 individuals (6.1%). From Tukey HSD test showed that CF was the best habitats comparing to all others forest types (sig=0.015 < 0.05) (Table 2). The Shannon-Wiener diversity index (H') indicated that CF had the highest diversity of wild bees ( $H' = 2.049$ ) (Table 3).

These findings are in agreement with those of Liow et al. (2001), who reported that bee abundance particularly that of Apidae, was significantly higher in CF than in other forested habitat types. However, our results were inconsistent with the findings of Hegland et al. (2009), who reported that local bee densities and diversities were highest in open land, followed by agroforestry systems, and were lowest in primary forests. Forested habitats offer nesting sites for many bee species (Klein et al. 2003; Brosi et al. 2007, 2008). This is demonstrated by the occurrence of *Apis dorsata* in only NF and TF habitats because this bee species prefers to build nests in the very tall trees found in these forest types (Starr et al. 1987; Tan 2007). Although open land provides better food resources in the herbaceous layer, bees often occur across different habitats that provide different resources (Tschamtker et al. 2005).

The intermediate abundance of wild bees observed in Gd and Ag indicates that mass-flowering crop species enhance wild plant populations, which provide floral

resources for pollinators in these habitats (Steffan-Dewenter and Westpal 2008) and that the dispersal ability of wild bees limits their abundance in agricultural fields (Carvalho 2010). These positive effects on bee populations occur in areas where agriculture increases the heterogeneity of habitat within the range of foraging bees (Kremen et al. 2007). The fact that the highest wild bee abundance was found in NF can be explained by the correlation between herbaceous vegetation density and habitat structure in NF.

The highest species richness was recorded in CF. The vegetation structure in CF was irregular, which resulted in a diverse canopy cover with a combination of forest and open land structures. This produced higher flower density and therefore a better food supply in the understory than is available in natural habitats (Potts et al. 2003; Bruna and Ribeiro 2005), resulting in greater bee richness and density. However, this result contrasts with the findings of Winfree (2007), who reported that open-land habitats exhibited the highest bee species richness and abundance compared with agroforestry and forest habitats.



**Figure 1.** Wild plant species (A) and Wild plant populations (B) in seven habitat types on Mount Slamet (mean ± SD)

**Table 2.** Total abundance of wild bees and wasps determined from a survey performed using insect nets (n = 15) in seven habitat types on Mount Slamet, Central Java, Indonesia

Family	Pollinator	Habitat type							Total	Relative abundance (%)
		NF	TF	PF	AF	CF	Gd	Ag		
Apidae	<i>Apis cerana</i>	78	50	19	21	50	66	27	311	33.1
	<i>Apis dorsata</i>	37	12	0	0	0	0	0	49	5.2
	<i>Trigona laeviceps</i>	60	47	0	0	47	43	0	197	21
	<i>Amegilla cingulata</i>	4	4	0	4	7	4	6	29	3
	<i>Amegilla zonata</i>	8	7	4	3	6	1	0	29	3
	<i>Nomia melanderi</i>	3	3	2	5	5	3	6	27	2.8
	<i>Ceratina nigrolateralis</i>	5	3	0	9	4	9	14	44	4.6
Megachilidae	<i>Megachile relativa</i>	15	16	11	11	12	6	4	75	7.9
Halictidae	<i>Lasioglossum malachurum</i>	0	0	7	0	6	11	6	30	3.1
	<i>Lasioglossum leucozonium</i>	0	0	8	0	13	7	10	38	4.05
	<i>Ropalidia fasciata</i>	0	0	0	3	3	7	1	14	1.4
Colletidae	<i>Hylaeus modestus</i>	2	0	0	0	0	0	0	2	0.02
Anthophoridae	<i>Xylocopa confusa</i>	0	0	0	0	11	0	12	23	2.4
Vespidae	<i>Delta campaniforme</i>	10	9	0	4	1	0	0	24	2.5
	<i>Polistes fuscatus</i>	7	10	7	6	6	5	5	46	4.9

**Table 3.** Diversity parameters of wild bees in seven habitat types on Mount Slamet, Central Java

Parameter	Habitat type						
	NF	TF	PF	AF	CF	GD	AG
Species	11	10	7	9	13	11	10
Shannon H'	1.804	1.856	1.765	1.969	2.049	1.759	2.042
Simpsons (D)	0.217	0.202	0.183	0.160	0.178	0.247	0.150
Evenness (E = H'/ln s)	0.752	0.806	0.907	0.896	0.799	0.733	0.887

Our results show that CF is an important secondary habitat for wild bees ( $H' = 2.049$ ). The Spearman's correlation coefficients showed that insect pollinators species richness and at 25 places were correlated with wild plant species richness ( $r^2 = 0.67$ ,  $p < 0.05$  and  $r^2 = 0.63$ ,  $p < 0.05$ , respectively). Our results highlight the importance of wild plant species richness in the habitat for supporting wild bee species richness and abundance; however, this is only true for habitats with low species diversity, such as AF, PF, Gd, and Ag. The positive impact of wild plant richness on pollinator species richness can be explained by increased floral resource heterogeneity, which increases the attractiveness for many pollinator species seeking both single and multiple resources (Tschamtko et al. 1998; Potts et al. 2003). In forested habitats (NF and TF), we also found that wild bee diversity was affected by wild plant abundance ( $r^2 = 0.68$ ,  $p < 0.05$ ), supporting the hypothesis that high floral density within a habitat increases wild bee diversity because greater floral abundance means higher resource availability for pollinators. Previous studies have reported that wild plant abundance is one of two key variables structuring pollinator communities (Potts et al. 2003, 2010).

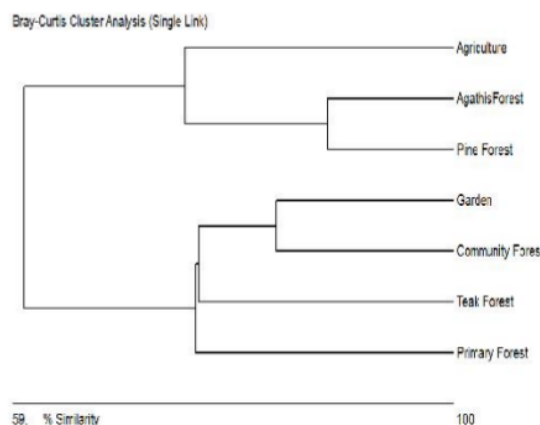
Our results were consistent with earlier studies performed by Steffan-Dewenter and Tschamtko (2001) in successional fallows and wheat fields (Holzschuh et al. 2007), where bee abundance was reported to increase with plant species richness and abundance (Buri et al. 2014). However, the results from our study are inconsistent with those of H 28 and Boeke (2006), who reported no significant effects of plant species richness on pollinator species richness.

The abundance of the major wild plant species did not affect wild bee diversity ( $r^2 = 0.44$ ,  $p < 0.05$ ). This finding can be explained by floral density's being more important than species richness because the availability of the main food resources (nectar and pollen) has a greater impact on the pollinators, as was reported by Hegland and Boeke (2006). Habitats with a high density of flowering plants are more attractive to pollinators than are those with a high diversity of flowering plants due to the lower travel time between multiple sp 34 patches in the former. Pollinators also tend to change their foraging behavior in response to flowering plant density to maximize nectar or pollen acquisition (Elliott and Irwin 2009).

*Apis cerana* was the most abundant and dominant species in all of the examined habitat types, with a total of 331 individuals (33.1%), followed by *Trigona laeviceps*, with 197 individuals (21.0%), whereas *Hylaeus modestus* had the lowest abundance, with only 2 individuals (0.02%). The most numerous family of pollinating insects in the investigated habitats was Apidae, with seven species, followed by Halictidae, with three species, and Vespidae, with two species. The least numerous were Megachilidae, Colletidae, and Anthophoridae, with only one species each. Only three species were found in all of the studied habitats. All of the p 40 taxa recorded in this study is categorized as generalist pollinators, i.e., they visit several plant species, and these pollinator species exhibit a wide range of floral choices and nesting requirements, which is

advantageous for switching to alternative resources (Maldonado et al. 2013). Native bees, which are generally specialists and can be solitary, are present in smaller numbers in nature. Comparison of the solitary bee communities observed in this study showed that *Amegilla cingulata*, *Nomia melanderi*, *Ceratina* sp., *Lasioglossum malachurum*, *L. leucozonium*, and *Xylocopa latipes* were present in the highest numbers in artificial habitats (CF, Gd, and Ag) due to their habit of nesting in the soft mortar of build 16 walls, whereas the genera *Apis* and *Trigona*, as well as genera of solitary bees with some tendency toward communalism (Xylocopinae) and subsocial behavior (Family Halictidae, tribes Augochlorini and Halictini), nest in pre-existing cavities in tree trunks or decomposing wood, or on the ground in banks or flat areas (Souza and Campos 2008). Multidimensional scaling supported this finding; bee communities in habitats with high wild plant species richness and abundance (NF, TF, CF, and Gd) included a wider variety of species compositions, whereas those in habitats with low wild plant species richness and abundance exhibited low species diversity. CF and Gd maintain high regional species richness due to diverse management practices and moderate disturbance intensity, which enhances floral species abundance and spatio-temporal habitat heterogeneity.

The similarity of the wild bee species among the habitats based on the Bray-Curtis index ranged from 31.5% to 80.56%. We observed an 80.56% overlap between NF and TF and an 80.54% overlap between PF and AF. TF had 79% similarity with CF. These results indicate high similarity in the respective wild plant communities. Clustering of the similarities of wild bees among the habitat types showed that the wild bee community could be divided into the following three groups: NF and TF; Gd and CF; and AG, AF, and PF (Figure 2).



**Figure 2.** Similarity of wild bee species composition among habitats using Bray-Curtis analysis (single linkage)



In conclusion, the quality of the investigated habitats differed in terms of their relative contributions to wild bee diversity. The wild bee diversity in habitats with few wild plant species was strongly correlated with wild plant diversity, whereas in habitats with high wild plant species richness, flowering plant abundance was more important. The number of wild bee taxa recorded in the studied habitats showed that the diversity of wild plants species in these areas was fairly high and that the quality of the habitats in terms of plant species richness was important in maintaining pollinator diversity, both for solitary wild bee species and for eusocial wild bees.

## ACKNOWLEDGMENTS

We are grateful to Akhmad Iqbal, Totok Agung, Soewarto, and Yulia Sistina for their support in securing funding for this research, and to all of the students who assisted in collecting field data. This research was supported by a Directorate General of Higher Education Research Fellowship and funding from the Universitas Jenderal Soedirman, Purwokerto, Central Java, Indonesia. The authors declare that there are no conflicts of interest regarding the publication of this paper.

## REFERENCES

- 31 Backer CA, Bakhuizen van den Brink RC Jr. 1963-1968. *Flora of Java* (Spermatophytes only). P. Noordhoff, Groningen
- Billeter R, Liira J, Bailey D, Bugter R, P. Arens P, Augenstein I, Aviron S, Baudry J, Bukacek R, Burel F, Cemy M, De Blust G, De Cock R, Diekötter T, Dietz H, Dirksen J, Domann C, Durka W, Frenzel M, Hamersky R, Hendrickx F, Herzog F, Klotz S, Koolstra B, Lausch A, Le Coeur D, Maelfait JP, Opdam P, Roubalova M, Schermann A, Schermann N, Schmidt T, Schweiger O, Smulders MJM, Speelmans M, Simova P, Verboom J, W van Wingerden W, Zobel M, Edwards PJ. 2008. Indicators for biodiversity in agricultural landscapes: a pan-European study. *J Appl Ecol* 45: 141-150.
- 3 Brosi B J, Daily G C, Ehrlich P R. 2007. Bee community shifts with landscape context in tropical countryside. *Ecol Appl* 17: 418-430.
- Brosi B J, Daily G C, Shih T M, Oviedo F, Durán G. 2008. The effects of forest fragmentation on bee communities in tropical countryside. *J Appl Ecol* 45: 773-783.
- 21 Bruna EM, Ribeiro MBN. 2005. The compensatory responses of an understory herb to experimental damage are habitat-dependent. *Am J Bot* 92: 2101-2106.
- 10 Buri P, Humbert YY, Arlettaz R. 2014. Promoting pollinating insects in intensive agricultural matrices: field-scale experimental manipulation of hay-meadow mowing regimes and its effects on bees. *PloS one* 9: e85635. DOI: 10.1371/journal.pone.0085635.
- 12 Campbell LG, Husband BC. 2007. Small populations are mate-poor but pollinator-rich in a rare, self-incompatible plant, *Hymenoxys herbacea* (Asteraceae). *New Phytol* 174: 915-925.
- 17 Carvalho LG, Seymour CL, Veldman R, Nicolson SW. 2010. Pollination services decline with distance from natural habitat even in biodiversity-rich areas. *J Appl Ecol* 47: 810-820.
- Elliott SE, Irwin RE. 2009. Effects of flowering plant density on pollinator visitation, pollen receipt, and seed production *Indelphinium barbeyi* (Ranunculaceae). *Am J Bot* 96: 912-919.
- Hegland SJ, Boeke L. 2006. Relationships between the density and diversity of floral resources and flower visitor activity in a temperate grassland community. *Ecol Entomol* 31: 532-538.
- 24 Hegland SJ, Nielson A, Lazaro A, Bjekers AL, Totland O. 2009. How does climate warming affect plant-pollinator interactions? *Ecol Lett* 12: 184-195.
- Hendrickx F, Maelfait JP, Van Wingerden W, Schweiger O, Speelmans M, Aviron S, Augenstein I, Billeter R, Bailey D, Bukacek R, Burel F, Diekötter T, Dirksen J, Herzog F, Liira J, Roubalova M, Vandomme V, Bugter R. 2007. How landscape structure, land-use intensity and habitat diversity affect components of total arthropod diversity in agricultural landscapes. *J Appl Ecol* 44: 340-351.
- Holzschuh A, Steffan-Dewenter I, Kleijn D, Tschamtké T. 2007. Diversity of flower-visiting bees in cereal fields: effects of farming system, landscape composition and regional context. *J Appl Ecol* 44: 41-49.
- 28 Klein AM, Steffan-Dewenter I, Tschamtké T. 2003. Flower visitation and fruit set of *Coffea canephora* in relation to local and regional agroforestry management. *J Appl Ecol* 40: 837-845.
- Kleintjes PK, Fetting SM, Vanoverbeke NB. 2006. Variable response of butterflies and vegetation to elk herbivory: an enclosure experiment in ponderosa pine and aspen-mixed conifer forests southwestern naturalist. *J Lepidopterists Soc* 52: 1-14.
- 2 Kremen C, Williams NM, Aizen MA, Gemmill-Herren B, LeBuhn G, Minckley R, Packer L, Potts SG, Roulston T, Steffan-Dewenter I, Vázquez DP, Winfree R, Adams L, Crone EE, Greenleaf SS, Keitt TH, Klein AM, Regetz J, Ricketts TH. 2007. Pollination and other ecosystem services produced by mobile organisms: a conceptual framework for the effects of land-use change. *Ecol Lett* 10: 299-314.
- 18 Liow LH, Sodhi NS, Elmqvist T. 2001. Bee diversity along a disturbance gradient in tropical lowland forests of South-East Asia. *J Appl Ecol* 38: 180-192.
- 13 Maldonado MB, Lomascolo SB, Vazquez DP. 2013. The importance of pollinator generalization and abundance for the reproductive success of a generalist plant. *PloS One* 8: e75482. DOI: 10.1371/journal.pone.0075482.
- Margurran EA. 1988. *Ecological Diversity and its Measurement*. 1st ed. Chapman and Hall, London.
- 15 McAlece N, Gage JDG, Lambhead PJD, Paterson GLJ. 1997. *BioDiversity Professional statistics analysis software*. Jointly developed by the Scottish Association for Marine Science and the Natural History Museum, London.
- Nahdi MS. 2014. The distribution and abundance of plant species under the shade of *Pinus merkusii*, *Acacia auriculiformis* and *Eucalyptus alba* in Giri Gama Mandiri forest, Yogyakarta. *Jurnal Natur Indonesia* 16: 33-41. [Indonesian]
- 29 Nwaogaranya UP, Mbaekwe EI. 2015. Some aspects of the biology of *Vernonia cinerea* (Linn.) Less. *Int J Sci Res Publ* 5 (9):.
- Pausas JP, Austin MP. 2001. Patterns of plant species richness in relation to different environments: an appraisal. *J Veg Sci* 12: 153-166.
- Potts SG, Biesmeijer JC, Kremen C, Neumann P, Schweiger O, Kunin WE. 2010. Global pollinator declines: trends, impacts and drivers. *Trends Ecol Evol* 25: 345-353.
- Potts SG, Vulliamy B, Dafni A, Ne'eman G, Willmer P. 2003. Linking bees and flowers: how do floral communities structure pollinator communities? *Ecol* 84: 2628-2642.
- 23 Sharma N. 2013. Dynamics and characterization of herbaceous vegetation in three forest communities in a subtropical dry deciduous forest in Jammu, Jammu and Kashmir. *Int J Sci Res* 2319-7064.
- Souza DE, Campos ME. 2008. Composition and diversity of bees (Hymenoptera) attracted by moericke traps in an agricultural area in Rio Claro, state of São Paulo, Brasil Iheringia. *Série Zoologia* 98: 236-243.
- Starr CK, Schmidt PJ, Schmidt J. 1987. Nest-site preferences of giant honey bee, *Apis dorsata* (Hymenoptera: Apidae), in Borneo. *Pacific Entomol* 63: 37-42.
- 33 Thomas JA, Bourn NAD, Clarke RT, Stewart KE, Simcox D, Pearman GS, Curtis R, Goodger B. 2001. The quality and isolation of habitat patches both determine where butterflies persist in fragmented landscapes. *Proc R Soc London Ser B-Biol Sci* 268: 1791-1796.
- 20 Tschamtké T, Gathmann A, Steffan-Dewenter I. 1998. Bioindication using trap-nesting bees and wasps and their natural enemies: community structure and interactions. *J Appl Ecol* 35: 708-719.
- 26 Tschamtké T, Gathmann A, Steffan-Dewenter I. 1998. Bioindication using trap-nesting bees and wasps and their natural enemies: community structure and interactions. *J Appl Ecol* 35: 708-719.



1

Tscharntke T, Klein AM, Kruess A, Steffan-Dewenter I, Thies C. 2005. Landscape perspectives on agricultural intensification and biodiversity-ecosystem service management. *Ecol Lett* 8: 857-874.

7

Widhiono I, Sudiana E. 2015. The role of wild plants in the conservation of pollinating insects of the Order Hymenoptera. *Pros Sem Nas Masy Biodiv Indon* 1: 1586-1590. [Indonesian]

5

Williams NM, Crone EE, Roulston TH, Minckley RL, Packer I, Potts SG. 2010. Ecological and life-history traits predict bee species responses to environmental disturbances. *Biol Conserv* 143: 2280-2291.

Winfree R, Griswold T, Kremen C. 2007. Effects of human disturbance on bee communities in a forested ecosystem. *Conserv Biol* 21: 213-223.

# Insect pollinator diversity along a habitat quality gradient on Mount Slamet, Central Java, Indonesia

## ORIGINALITY REPORT

24%

SIMILARITY INDEX

17%

INTERNET SOURCES

19%

PUBLICATIONS

10%

STUDENT PAPERS

## PRIMARY SOURCES

1

Ave Liivamägi, Valdo Kuusemets, Tanel Kaart, Jaan Luig, Isabel Diaz-Forero. "Influence of habitat and landscape on butterfly diversity of semi-natural meadows within forest-dominated landscapes", Journal of Insect Conservation, 2014

Publication

2%

2

Markus Franzén. "Small local population sizes and high habitat patch fidelity in a specialised solitary bee", Journal of Insect Conservation, 02/2009

Publication

1%

3

J. Christopher Brown, Marcio Luiz de Oliveira. "The impact of agricultural colonization and deforestation on stingless bee (Apidae: Meliponini) composition and richness in Rondônia, Brazil", Apidologie, 2013

Publication

1%

4

[nesa-india.org](http://nesa-india.org)

Internet Source

1%

5	Rodrigo B. Gonçalves, Nicolle V. Sydney, Priscila S. Oliveira, Nathiele O. Artmann. "Bee and wasp responses to a fragmented landscape in southern Brazil", Journal of Insect Conservation, 2014 Publication	1 %
6	Submitted to University of Arizona Student Paper	1 %
7	docobook.com Internet Source	1 %
8	DEREK R. ARTZ. "The effects of neighbouring tree islands on pollinator density and diversity, and on pollination of a wet prairie species, <i>Asclepias lanceolata</i> (Apocynaceae)", Journal of Ecology, 5/2006 Publication	1 %
9	www.hindawi.com Internet Source	1 %
10	jhr.pensoft.net Internet Source	1 %
11	opus.uni-hohenheim.de Internet Source	1 %
12	journals.tubitak.gov.tr Internet Source	1 %
13	Maldonado, MarÃa BelÃ©n, Silvia Beatriz	

— LomÁjscolo, and Diego Pedro VÁjzquez. "The Importance of Pollinator Generalization and Abundance for the Reproductive Success of a Generalist Plant", PLoS ONE, 2013.

Publication

1 %

14

[www.beesind.com](http://www.beesind.com)

Internet Source

1 %

15

[www.creamjournal.org](http://www.creamjournal.org)

Internet Source

1 %

16

Luceli de Souza, Maria J. de O. Campos. "Composition and diversity of bees (Hymenoptera) attracted by Moericke traps in an agricultural area in Rio Claro, state of São Paulo, Brasil", Iheringia. Série Zoologia, 2008

Publication

1 %

17

"Advances in Insect Control and Resistance Management", Springer Science and Business Media LLC, 2016

Publication

1 %

18

[jjbs.hu.edu.jo](http://jjbs.hu.edu.jo)

Internet Source

1 %

19

[www.uwec.edu](http://www.uwec.edu)

Internet Source

1 %

20

Laura Meneses Calvillo. "Bee diversity in a fragmented landscape of the Mexican neotropic", Journal of Insect Conservation,

1 %

03/09/2010

Publication

- 
- |    |                                                                                 |      |
|----|---------------------------------------------------------------------------------|------|
| 21 | <a href="http://www.tandfonline.com">www.tandfonline.com</a><br>Internet Source | <1 % |
|----|---------------------------------------------------------------------------------|------|
- 
- |    |                                                                       |      |
|----|-----------------------------------------------------------------------|------|
| 22 | <a href="http://www.scribd.com">www.scribd.com</a><br>Internet Source | <1 % |
|----|-----------------------------------------------------------------------|------|
- 
- |    |                                                                       |      |
|----|-----------------------------------------------------------------------|------|
| 23 | <a href="http://www.ijiras.com">www.ijiras.com</a><br>Internet Source | <1 % |
|----|-----------------------------------------------------------------------|------|
- 
- |    |                                                                                                                                                                                                                                                                                     |      |
|----|-------------------------------------------------------------------------------------------------------------------------------------------------------------------------------------------------------------------------------------------------------------------------------------|------|
| 24 | Pablo Carbonell-Bejerano, Cristina Urbez, Juan Carbonell, Antonio Granell, Miguel A. Perez-Amador. "A Fertilization-Independent Developmental Program Triggers Partial Fruit Development and Senescence Processes in Pistils of Arabidopsis", Plant Physiology, 2010<br>Publication | <1 % |
|----|-------------------------------------------------------------------------------------------------------------------------------------------------------------------------------------------------------------------------------------------------------------------------------------|------|
- 
- |    |                                                                   |      |
|----|-------------------------------------------------------------------|------|
| 25 | <a href="http://www.mdpi.com">www.mdpi.com</a><br>Internet Source | <1 % |
|----|-------------------------------------------------------------------|------|
- 
- |    |                                                                                         |      |
|----|-----------------------------------------------------------------------------------------|------|
| 26 | <a href="http://www.markjohnstonlab.org">www.markjohnstonlab.org</a><br>Internet Source | <1 % |
|----|-----------------------------------------------------------------------------------------|------|
- 
- |    |                                                                               |      |
|----|-------------------------------------------------------------------------------|------|
| 27 | <a href="http://koreascience.or.kr">koreascience.or.kr</a><br>Internet Source | <1 % |
|----|-------------------------------------------------------------------------------|------|
- 
- |    |                                                                                                                                                                                   |      |
|----|-----------------------------------------------------------------------------------------------------------------------------------------------------------------------------------|------|
| 28 | Thomas O. Crist, Sharmila V. Pradhan-Devare, Keith S. Summerville. "Spatial variation in insect community and species responses to habitat loss and plant community composition", | <1 % |
|----|-----------------------------------------------------------------------------------------------------------------------------------------------------------------------------------|------|

29

Submitted to Nanyang Technological University

Student Paper

<1 %

30

Syed Mubashir Andrabi, Zafar Ahmad Reshi,  
Manzoor Ahmad Shah, Salman Qureshi.

"Studying the patterns of alien and native floras  
of some habitats in Srinagar city, Kashmir,  
India", Ecological Processes, 2015

Publication

<1 %

31

Edible Medicinal and Non-Medicinal Plants,  
2012.

Publication

<1 %

32

documents.mx

Internet Source

<1 %

33

e-journal.biologi.lipi.go.id

Internet Source

<1 %

34

Submitted to University of Stirling

Student Paper

<1 %

35

Ogoudje I Amahowe, Samadori SH Biaou,  
Armand K Natta, Rodrigue O Balagueman. "

Multiple disturbance patterns and population  
structure of a tropical tree species,  
(Leguminosae–Caesalpinioideae), in two  
contrasting bioclimatic zones of the Republic of  
Benin ", Southern Forests: a Journal of Forest

<1 %



36

[mafiadoc.com](http://mafiadoc.com)

Internet Source

<1 %

37

R S Dewi, R S Kasiamdari, E Martani, Y A Purwestri. " Efficiency of sp. 3 to reduce chromium, sulfide, ammonia, phenol, and fat from batik wastewater ", IOP Conference Series: Earth and Environmental Science, 2019

Publication

<1 %

38

Lori M. Garzio, Deborah K. Steinberg. "Microzooplankton community composition along the Western Antarctic Peninsula", Deep Sea Research Part I: Oceanographic Research Papers, 2013

Publication

<1 %

39

G. Bacaro, D. Rocchini, I. Bonini, M. Marignani, S. Maccherini, A. Chiarucci. "The role of regional and local scale predictors for plant species richness in Mediterranean forests", Plant Biosystems - An International Journal Dealing with all Aspects of Plant Biology, 2008

Publication

<1 %

40

[journals.plos.org](http://journals.plos.org)

Internet Source

<1 %

41

Maria A. Aliberti Lubertazzi, Howard S. Ginsberg. "Emerging dragonfly diversity at small

<1 %

## Rhode Island (U.S.A.) wetlands along an urbanization gradient", Urban Ecosystems, 2010

Publication

---

- 42 Agus Pudjoarinto, Edward J Cushing. "Pollen-stratigraphic evidence of human activity at Dieng, Central Java", *Palaeogeography, Palaeoclimatology, Palaeoecology*, 2001 <1 %

Publication

---

- 43 Ling-Zeng Meng, Xiao-Dong Yang, Konrad Martin, Jian-Min Gan, Yan-Hong Liu, Wei-Chang Gong. "Movement patterns of selected insect groups between natural forest, open land and rubber plantation in a tropical landscape (southern Yunnan, SW China)", *Journal of Insect Conservation*, 2016 <1 %

Publication

---

- 44 Ratna Stia Dewi, Rina Sri Kasiandari, Erni Martani, Yekti Asih Purwestri. "Optimization of the conditions for the decolorization of batik wastewater by *Aspergillus* sp. 3", *AIP Publishing*, 2019 <1 %

Publication

---

- 45 Dulce María Figueroa-Castro, Guadalupe González-Tochihuitl, Sombra Patricia Rivas-Arancibia, Gabriela Castaño-Meneses. "Floral Visitors of Three Asteraceae Species in a Xeric Environment in Central Mexico", *Environmental* <1 %

46

T. Petanidou, E. Lamborn. "A land for flowers and bees: studying pollination ecology in Mediterranean communities", Plant Biosystems - An International Journal Dealing with all Aspects of Plant Biology, 2005

Publication

<1%

Exclude quotes Off

Exclude matches Off

Exclude bibliography Off