

ISSN 1695-7504

REDVET

Revista Electrónica de Veterinaria

Veterinaria.org



Revista Electronica de Veterinaria

It is a Revista Electronica de Veterinaria scientific journal, refereed, arbitrated, online, quarterly and with access to full articles. Publishes scientific and research papers, reviews, theses, dissertations, lectures, short communications, posters, case studies, informative articles or opinion pieces regarding any aspect of technical expertise in the field of Veterinary Sciences (medical and health sector, health, surgery, agriculture, animal husbandry, nutrition, environmental) at regional, national and international levels. The topics may be addressed from the clinical, educational, experimental, research, outreach and other aspects. Is available free of charge as an Open Access journal on the Internet. He preferably publishes scientific, research, review, thesis, doctoral thesis, clinical cases, but also informative, opinion, technical or other articles of any specialty in the field of Veterinary Sciences or related internationally. It is also an official means of scientific, technical and professional communication of the thematic portal Veterinaria.org, of the Spanish Association of Veterinarians Specialists in Diagnostic Imaging (AEVEDI) and of the Spanish Society of Internal Veterinary Medicine (SEMIV) after integrating RECVET in 2008 and invites other veterinary entities to join forces. For more information consult editor@veterinaria.org



Indexed by



ANNOUNCEMENTS

Call for Reviewers

If you would like to apply for the position of an Editorial Board Member/Reviewer on the journal, please contact the Editor including your CV and a brief covering letter detailing why you are a suitable candidate, to editor@veterinaria.org. Your cover letter should be no longer than the one page and should cover where you believe the research field is going (and the journal's place within it), as well as details of any previous relevant journal editorial and peer review management experience.

[HOME](#) [ARCHIVES](#) / VOL. 23 NO. 4 (2022) / Articles

The Effect of Garlic Flour and Organic Chromium Supplementation on Feed Intake, Digestibility of Feed and Growth Performance of Goat

Agustinah Setyaningrum
Jenderal Sudirman University

Munasik
Jenderal Sudirman University

Nur Hidayat
Jenderal Sudirman University

Caribu Hadi Prayitno
Jenderal Sudirman University

Keywords: Goat, Consumption, Digestibility, Organic chromium, Glucose metabolism, Performance, Garlic flour

ABSTRACT

This study was aimed to evaluate garlic flour and organic chromium on feed intake, digestibility of feed and growth performance (ADG) on goats. The study was conducted for 70 days using 24 Ettawa crossbred goats and



[PDF](#)

HOW TO CITE

Setyaningrum, A., Munasik, Hidayat, N., & Prayitno, C. H. (2022). The Effect of Garlic Flour and Organic Chromium Supplementation on Feed Intake, Digestibility of Feed and Growth Performance of Goat. *Revista Electronica De Veterinaria*, 23(4), 01 - 11. Retrieved from

Indexed by



ANNOUNCEMENTS

Call for Reviewers

If you would like to apply for the position of an Editorial Board Member/Reviewer on the journal, please contact the Editor including your CV and a brief covering letter detailing why you are a suitable candidate, to editor@veterinaria.org. Your cover letter should be no longer than the one page and should cover where you believe the research field is going (and the journal's place within it), as well as details of any previous relevant journal editorial and peer review management experience.

Vol. 23 No. 4 (2022)

ARTICLES



The Effect of Garlic Flour and Organic Chromium Supplementation on Feed Intake, Digestibility of Feed and Growth Performance of Goat

Agustinah Setyaningrum, Munasik, Nur Hidayat, Caribu Hadi Prayitno

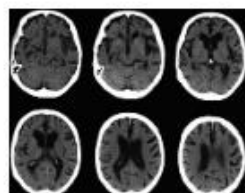
01 - 11



Diagnóstico Y Manejo de Patologías Frecuentes en Caninos (Canis familiaris) Geriátricos (Revisión)

Fabiana Llaque-Chávarri, Angélica María Huamán-Dávila

12 - 28



A Research on the Therapeutic Potential of Novel Chemical Entities Utilized in an Animal Model of Alzheimer's Disease

Sailesh Narayan, Barun Ranjan Sarkar, Dashrath Singh, Suraj Sharma

29 - 34



The Studies of Antifungal Properties of Steroidal Saponin

Rojalini Samanta, Abhishek Pandey, Poonam Bhardwaj, Bhupen Subba

35 - 40



Ischemic Post Conditioning Prevents Preterm Cell Death in Rats

Shivangi, Brishnendra Mishra, Sushant Kumar Sharma, Tashi Choden Lepcha

41 - 46



A Research on a Few Oral Hypoglycemic Medications to Stop the Growth of Diabetes Problems in Lab Animals

Richa, Barun Ranjan Sarkar, Jyoti Singh Jatav, Sabina Gurung

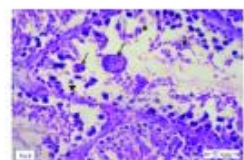
47 - 52



Hematological, Biochemical, and Histological Measures in Wistar Male Rats used to Assess Asafetida's Toxicity

Puja Lal, Dechen Ganjur, Abdul Wadood Siddiqui, Pranal Chhetri

53 - 57



Male Parathyroid System Effects of Chronic High-Dose Nandrolone Decanoate

Archana Sahu, Licha Rin, Devendra Singh, Suraj Sharma

58 - 61



Indexed by



ANNOUNCEMENTS

Call for Reviewers

If you would like to apply for the position of an Editorial Board Member/Reviewer on the journal, please contact the Editor including your CV and a brief covering letter detailing why you are a suitable candidate, to editor@veterinaria.org. Your cover letter should be no longer than the one page and should cover where you believe the research field is going (and the journal's place within it), as well as details of any previous relevant journal editorial and peer review management experience.

Downloads

[Paper Template Download](#)
[Copyright Form Download](#)

Important Links

Home
Aims and Scope
Call for Papers
Instructions for Authors
Editorial Board
Archive
Download
Ethics & Policies

INFORMATION

[For Readers](#)
[For Authors](#)
[For Librarians](#)



Effect of *Kaempferia Parviflora* on Male Rat Sexual Activity and Its Toxicity

Avishikta Ray Das, Abhishek Pandey, Ramgopal Singh, Pratikcha Rai

62 - 66



Effect of Astaxanthin on the Productive Response, Egg Quality and Egg Yolk Pigmentation of Commercial Laying Hens

Efecto de la astaxantina sobre la respuesta productiva, calidad de huevo y pigmentación de yema de huevo de gallinas de postura comercial

Elías Salvador Tasayco

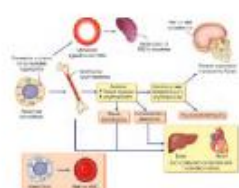
67 - 81



Detection of Bacterial Contaminant of Newborn Calves and Their DOMS Pens

Sarah Jasim Abdulameer, Liqaa Hameed Khamees, Zainab Fadhil Rahman, Chassan H. Jameel, Anas A. Humadi

82 - 91



The Effect of the Diet and Other Genetic Factors on a Unique β -Thalassemia Genotype IVS1.1 [G>A] / IVS2.1 [G>A] Discovered in Kirkuk City

Zehra Muhammed Kirdar, Ibrahim Aljebory

92 - 104



Isolation and Evaluation of Antibacterial Agents Produced by Soil *Bacillus* SP, and Study Some of their Immunological Parameters

Mohammad J. Al-Jassani, Mohammed Abdulkadhim Sayah, Maytham T. Qasim, Abed J. Kadhim, Entsar Hachim Muhammad

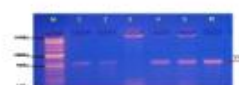
105 - 111



Molecular Characterization of *Cysticercus tenicollis* from Slaughtered Sheep and Goats in Basrah Province, Iraq

Huda S. Farhan, Suzan A. AL-azizz, Shaker A. N. AL-jadaan

112 - 120



Methicillin Resistant *Staphylococcus aureus* (MRSA) Isolated from Skin Infections in Poultry (Bumble Foot)

Basim Mohammed Hanon, Alaa AM AL-Khafajy

121 - 130



Editorial Team

Dr Kuldeep Dhama

Principal Scientist

M.V.Sc., Ph.D. (Gold Medalist),

NAAS Associate,

Fellow Royal Society of Medicine (FRSM, UK)

Principal Scientist

Division of Pathology,

ICAR-Indian Veterinary Research Institute (IVRI)

Izatnagar-243 122, Bareilly, Uttar Pradesh, India



Dr. Mahmoud Mohamed Ibrahim Alagawany

Assistant Professor,

Nutrition in Poultry Department, Faculty of Agriculture, Zagazig

University, Zagazig, Egypt



Dr. Abd Al-Bar Al-Farha

Dean, Technical Agricultural College

Northern Technical University Iraq



T. V. Aravindakshan

Senior Professor and Director, Centre for Advanced Studies in Animal

Genetics & Breeding, Kerala Veterinary & Animal Sciences University, Mannuthy -680651,

Thrissur

Heba Mohammed Mohammed Salem

Associate professor

Department of Poultry Diseases,

Faculty of Veterinary Medicine, Cairo University, 12211, Giza, Egypt



Kasim Sakran Abass Askar

Professor Kirkuk University, College of Pharmacy,

Department of Pharmacology and Toxicology

Kirkuk, Iraq



Faham Khamesipour

- Shahid Beheshti University Of Medical Sciences from 2018 until present

- Tehran University of Medical Sciences from 2021 until present

- Young Researchers and Elite Club, Shahrekord branch from 2008 until present

- Islamic Azad University, Shahrekord Branch from 2006 until present



Indexed by



ANNOUNCEMENTS

Call for Reviewers

If you would like to apply for the position of an Editorial Board Member/Reviewer on the journal, please contact the Editor including your CV and a brief covering letter detailing why you are a suitable candidate, to editor@veterinaria.org. Your cover letter should be no longer than the one page and should cover where you believe the research field is going (and the journal's place within it), as well as details of any previous relevant journal editorial and peer review management experience.

Downloads

[Paper Template Download](#)

[Copyright Form Download](#)

Important Links

Home
Aims and Scope
Call for Papers
Instructions for Authors
Editorial Board
Archive
Download
Ethics & Policies

INFORMATION

[For Readers](#)

[For Authors](#)

[For Librarians](#)

Dr. Showkat Ahmad Shah

Assistant Professor cum Junior Scientist.

Division of Veterinary Pathology

Faculty of Veterinary Sciences & Animal Husbandry

Shuhama, Alustang, Srinagar, 190006





Revista Electronica de Veterinaria

COUNTRY

Spain



Universities and research institutions in Spain



Media Ranking in Spain

SUBJECT AREA AND CATEGORY

Veterinary
↳ Veterinary (miscellaneous)

PUBLISHER

Veterinaria Organizacion

H-INDEX

6

PUBLICATION TYPE

Journals

ISSN

16957504

COVERAGE

2011-2021

INFORMATION

[Homepage](#)[How to publish in this journal](#)editor@veterinaria.org

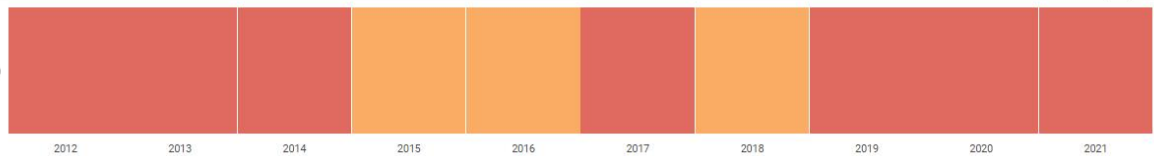
SCOPE

It is a veterinary scientific journal, referenced, arbitrated, online, monthly and with access to full articles. Publishes scientific and research papers, reviews, theses, dissertations, lectures, short communications, posters, case studies, informative articles or opinion pieces regarding any aspect of technical expertise in the field of Veterinary Sciences (medical and health sector, health, surgery, agriculture, animal husbandry, nutrition, environmental) at regional, national and international levels. The topics may be addressed from the clinical, educational, experimental, research, outreach and other aspects. Is available free of charge as an Open Access journal on the Internet. He preferably publishes scientific, research, review, thesis, doctoral thesis, clinical cases, but also informative, opinion, technical or other articles of any specialty in the field of Veterinary Sciences or related internationally. It is also an official means of scientific, technical and professional communication of the thematic portal Veterinaria.org, of the Spanish Association of Veterinarians Specialists in Diagnostic Imaging (AEVEDI) and of the Spanish Society of Internal Veterinary Medicine (SEMIV) after integrating RECVET in 2008 and invites other veterinary entities to join forces.

Join the conversation about this journal

Quartiles

Veterinary (miscellaneous)



1
Arquivo Brasileiro de
Medicina Veterinaria e
BRA

60%
similarity

2
Ciencia Animal Brasileira
BRA

53%
similarity

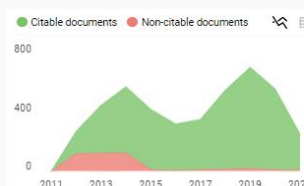
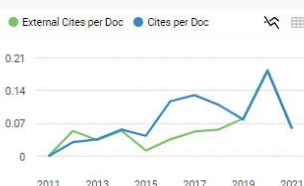
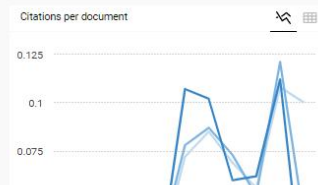
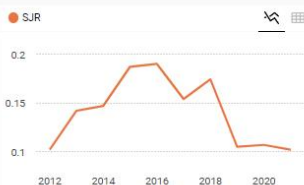
3
Archives of Veterinary
Science
BRA

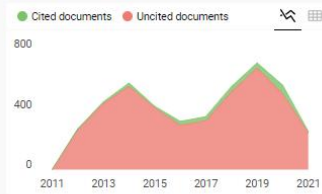
52%
similarity

4
Medicina Veterinaria (Brazil)
BRA

51%
similarity

5
Semina:Ciencias Agrarias
BRA

45%
similarity



← Show this widget in your own website

Just copy the code below and paste within your html code:

```
<a href="https://www.scima
```

SCImago Graphica

Explore, visually communicate and make sense of data with our [new data visualization tool](#).



Metrics based on Scopus® data as of April 2022

The Effect of Garlic Flour and Organic Chromium Supplementation on Feed Intake, Digestibility of Feed and Growth Performance of Goat

Agustinah Setyaningrum¹, Munasik², Nur Hidayat³ and Caribu Hadi Prayitno^{4*}

^{1,2,3,4}Faculty of Animal Science, Jenderal Soedirman University, Indonesia

*Corresponding: caribuunsoed@gmail.com

ABSTRACT

This study was aimed to evaluate garlic flour and organic chromium on feed intake, digestibility of feed and growth performance (ADG) on goats. The study was conducted for 70 days using 24 Ettawa crossbred goats and 3 PE replacement stock goats aged 8 months which were divided into three treatments which were repeated seven times. The treatments consisted of R0 : 40% native grass + 60% concentrate (CP 14.36 %; TDN 66.32 %), R1 : R0 + 250 ppm garlic flour, R2 : R1 + 1,5 ppm organic Chromium. Data were analyzed using Completely Randomized Design (CRD) with further test using Orthogonal Contrast. Results showed that Supplementation of 250 ppm garlic flour and 1,5 ppm organic chromium mineral had an effect ($P<0.05$) on the consumption of dry matter (CDM) and crude fiber (CCF), digestibility of crude protein (DCP) and crude fiber (DCF), increase in average daily gain (ADG) and body condition score (BCS), but had no effect ($P>0.05$) on consumption of organic matter (COM) and crude protein (CCP), dry matter of digestibility (DDM) and organic matter (DOM), mean rumen pH, blood glucose and total VFA of Ettawa crossbred goats. The combination of 250 ppm garlic flour supplementation and 1.5 ppm organic chromium (R2) had the same effect as the 250 ppm (R1) garlic flour supplementation treatment in increasing CDM, CCF, ADG and BCS, but tends to reduce DCP goat feed. Hence, the supplementation of 250 ppm garlic flour (R1) and the combination of 250 ppm garlic powder supplementation and organic chromium (R2) had the same effectiveness in increasing consumption and digestibility, glucose metabolism, and growth performance of goats.

Keywords: Goat, Consumption, Digestibility, Organic chromium, Glucose metabolism, Performance, Garlic flour

Introduction

In Indonesia, goat farms are generally owned and operated by smallholder farmers, hence low production owing to poor feed quality is a common issue (Prayitno & Suwarno, 2017). On the other side, the presence of rumen microbial activity, especially methanogens, results in an inefficient use of feed nutrients by livestock. Methanogens will change rumen fermentation results into methane gas, which reflects the loss of feed energy (Busquet et al., 2006). Antibiotics and antimethanogens have been widely utilized to promote growth in ruminants (Yang et al., 2015), however their usage is currently limited due to the fact that they can cause resistance in pathogenic bacteria and residues in meat and milk. In past few years, extensive research has examined the use of plant bioactive compounds and minerals as substitutes for methanogen inhibitors.

Garlic (*Allium sativum*) and organic chromium (Cr) minerals can act as anti-methanogenic and growth promoters. Garlic has various bioactive compounds, including organosulfur compounds, phenolic compounds, saponins, and polysaccharides (Szychowski et al., 2018). The active compounds of garlic that act as antibiotics are organosulfur compounds, namely diallyl thiosulfonate (allicin), diallyl sulfide (DAS), diallyl disulfide (DADS), diallyl trisulfide (DATS), E/Z-ajoene, S-allyl-cysteine (SAC), and S-allyl-cysteine sulfoxide (alliin)

(Shang et al., 2019). In vitro research showed that the addition of 0.27 g/l garlic oil reduced the number of Archae bacteria by 3.87% and reduced methane gas by 23.94% (Patra & Yu, 2015), while supplementation in the form of 125 mg/l garlic flour reduced methane gas to 15.34% (Prayitno & Suwarno, 2017). The decrease in methane gas can occur because the organosulfur compounds contained in garlic can affect the stability of methanogenic cell membranes by inhibiting HMG-CoA reductase which is a catalyst for the synthesis of isoprenoid cell membranes of methanogens (Prayitno et al., 2013). Meanwhile, Cr mineral plays a role in increasing glucose absorption and tissue protein synthesis through increasing insulin activity in the body which plays a role in providing cell glucose. The addition of Cr increases the entry of glucose into the cells of the body. GTF (Glucose Tolerance Factor)-Cr increases insulin binding by receptors on cell membranes that play a role in the transport of glucose and amino acids as raw materials for protein synthesis so that entry into cells increases. The results showed that Cr supplementation increased the average daily gain of Bengal goats (Haldar et al., 2009) and beef cattle (Bernhard et al., 2012) but did not affect dry matter consumption and final weight. Recent studies on the addition of Cr showed varying results on dry matter consumption and daily body weight gain (ADG).

The combination of garlic flour supplementation with mineral Cr aims to maximize the production of PE goats while reducing the risk of environmental pollution by suppressing the production of methane gas. Prayitno et al. (2014) found that in male Brahman Cross cattle the combination of supplementation of 250 mg/kgDMI garlic flour, 1,5 ppm Cr, and 40 ppm Zn-Lysinate increased the consumption of DM 15.71% and ADG to 32.45%, and decreased the number of protozoa and bacteria by 5.07% and 11.01%, respectively. Prayitno et al. (2019) showed that supplementation of garlic flour combined with several organic minerals (Se, Cr, Zn-Lysinate) increased dry matter consumption by 7.69% and energy consumption by 7.92% in PE dairy goats. In general, the results of the above study indicate that the combination of garlic and organic Cr supplementation can increase livestock productivity in terms of ADG and consumption levels. This combination of garlic flour and organic Cr has never been tested on PE beef goats in order to increase their productivity, so it is necessary to evaluate the effectiveness of the combination on nutrient consumption and digestibility, glucose metabolism, and growth performance of PE goats.

Materials and Methods

Ethical Approved

Using animal and scientific procedures in this study has been approved by Animal Ethics Committee in the Faculty of Animal Science, Jenderal Soedirman University, Indonesia

Livestock, experimental design, livestock treatment and treatment design

The livestock used were male Ettawa crossbreed goats (PE) with an average age of 8 months totaling 21 heads with 3 replacement stock with an average body weight of 20.93 ± 3.80 kg. The design used is a completely randomized design. The treatments consisted of R_0 : 40% native grass + 60% concentrate (CP : 14.36%; TDN : 66.32 %), R_1 : R_0 + 250 ppm garlic

flour, $R_2 : R_1 + 1.5$ ppm organic Cr which was repeated as much as seven times. Feed is given as much as 4% of body weight and drinking water is given ad libitum. Feeding was done twice, namely in the morning and afternoon and the treatment feed was given after 14 preliminary days, namely for 40 days. Garlic flour preparation followed the method of Prayitno et al. (2013) and the manufacture of organic Cr minerals based on Prayitno & Widyastuti (2010).

Table 1. Nutrient composition of the experiment

No	Type	R0	R1	R2
1	Native grass (%)	60	60	60
3	Concentrate (%)	40	40	40
4	Garlic Flour (%)	0	0.025	0
5	Seaweed Flour (%)	0	0	3.6
6	Organic Cr Minerals (%)	0.00015	0.00015	0.00015
Total		100.00015	100.02515	103.6002

Table 2. Results of Native grass and Concentrate Analysis

Feed Ingredients	Nutrient Content				
	Dry Matter (%)	Ash (%)	Crude Protein (%)	Crude Fat (%)	Crude Fiber (%)
Native grass*	34.31	9.64	7.05	32.42	0.38
Concentrate*	95.70	6.96	19.24	11.54	7.48

Source : *Proxymate Analysis at the Animal Feedstuff Laboratory, Jenderal Soedirman University (2019)

Table 3. Experimental Feed Table (R_0)

Feed Ingredients	Nutrient Content					TDN
	Dry Matter (%)	Ash (%)	Crude Protein (%)	Crude Fat (%)	Crude Fiber (%)	
Native grass 40%	13.72	3.86	2.82	12.97	0.15	43.6
Concentrate 60%	57.42	4.18	11.54	6.92	4.49	72.3
Total 100%	71.14	8.03	14.36	19.89	4.64	

The concentrate ingredients consist of pollard, soybean meal, coconut meal, corn gluten feed (CGF), soybean groats, kleci (outlayer of soy), salt, mineral mix, and amino acid lysine.

Animal feeding and management

The goats were raised in individual pens. The feeds were given 4.0% of body weight and the water were given ad libitum. The diet was offered to the animal twice every day at

07.00 AM and 04.00 PM. The refusal was collected and weight in the morning before new feed was given.

Digestion trial, chemical, analysis and growth measurement

The feed digestion experiment was carried out for 7 days using the total collection method. The feed given, the rest of the feed and the feces of each experimental unit were weighed and recorded every day. In the total collection, the feed given and the remaining feed were collected for each experimental unit of 100 grams each, while the feces samples were 250 grams. Samples of feed and the rest of the feed were dried in an oven at 60°C, while the feces were stored at 18°C.

Goat rumen fluid was taken through the stomach tube with the help of a vacuum pump. Rumen fluid was taken 3 hours after feeding in the morning, then the pH was measured and stored at -20°C for chemical analysis. Measurement of dry matter, crude protein, crude fiber, crude fat and ash in feed and feces refers to the AOAC (2006). Measurement of feed and feces nitrogen refers to the Kjeldahl method.

Measurement of Nutrient Consumption and Digestibility

The recording of the amount of consumption and the rest of the feed was carried out for 4 weeks and in the last 7 days, samples were taken and the collection of feeding and leftover feed. The administration and the remaining forage were taken as much as 100 g and the administration and the remaining concentrate were taken as much as 10 g from the daily amount and then composited for 7 days of sampling. The sample was sun-dried, followed by baking at 70 °C for 2 days, and then reheated at 105 °C for a day. Dried samples are then ground down for analysis of feed ingredient composition according to AOAC (2006).

Measurement of Blood Glucose Levels, rumen pH, and total VF

Blood glucose measurement. Blood was taken from the jugular vein, 3 hours after eating. Rumen pH was measured 3 hours after eating. The rumen fluid collection point is 2 inches from the last rib and 2 inches from the vertebral column, or three fingers from the 13th rib. The point was wiped using an alcoholic tissue then pricked with a syringe and 7 ml of rumen fluid was taken, then the liquid was put into a glass bottle and stored in a cooler to be transferred to the laboratory. The rumen fluid was centrifuged and the supernatant was taken for analysis by VFA analysis using steam distillation technique (AOAC, 2006).

Growth Parameter Measuremen

Growth was measured by daily body weight gain. Daily body weight gain is the increase in body weight obtained from the difference between the final weight and the initial weight divided by the length of maintenance expressed in grams/head/day.

Results and Discussion

Consumption and Digestion

Garlic flour supplementation of 250 ppm and organic Cr affected ($P < 0.05$) dry matter consumption (CDM), crude fiber consumption (CCF), crude protein digestibility (CPD), crude fiber digestibility (CFD), but did not affect ($P > 0.05$) consumption of organic matter (COM), consumption of crude protein (CCP), dry matter digestibility (DDM), and digestibility of organic matter (DOM). The average value of consumption and nutrient digestibility of PE goats supplemented with organic Cr and garlic flour which is presented in Table 2 as follows.

Table 2. Consumption and nutrient digestibility of PE goats supplemented with organic Cr and garlic flour

Parameter	R0	R1	R2	p-value
Dry matter (DM) consumption				
- DM consumption (g/head/hour)	820.29±95.99 ^a	999.79±115.84 ^b	933.25±82.40 ^b	0.011*
- DM Consumption (% BW)	3.31±0.15	3.41±0.13	3.39±0.18	0.481
Organic matter (OM) consumption				
- OM consumption (g/head/hour)	521.90±70.81	589.29±34.89	585.44±57.65	0.067
- OM consumption (% BW)	2.04±0.11	2.10±0.22	2.08±0.11	0.779
Crude protein (CP) consumption (g/head/hour)	244.41±13.00	227.76±23.60	242.22±19.65	0.240
Crude fiber (SK) consumption (g/head/hour)	648.01±82.07 ^a	781.27±106.2 ^b	756.04±83.3 ^b	0.032*
Digestibility				
- Dry matter (DM) Digestibility (%)	77.04±6.11	76.11±3.37	75.59±2.91	0.638
- Organic matter (OM) Digestibility (%)	69.17±10.25	62.23±6.04	66.61±3.05	0.225
- Crude protein (CP) Digestibility (%)	82.02±0.03 ^b	72.71±3.2 ^a	74.32±2.26 ^a	0.000**
- Crude fiber (CF) Digestibility (%)	76.08±0.06 ^a	82.42±2.03 ^b	82.61±1.52 ^b	0.021*

Description: R₀ = 40% native grass + 60% concentrate (CP 14.36 %; TDN 66.32 %), R₁ = R₀ + 250 ppm garlic flour, R₂ = R₁ + 1.5 ppm organic Cr, different superscripts on the same line shows significantly different, *significantly significant, **very significant effect

Glucose Metabolism and Growth Parameters

Garlic flour supplementation of 250 ppm and organic Cr affected ($P < 0.05$) average daily gain (ADG) and body condition score (BCS), but did not affect ($P > 0.05$) the average rumen pH, blood glucose, and total VFA of PE goats. The average values of rumen pH, blood glucose, total VFA, ADG, BCS of PE goats supplemented with garlic flour and organic Cr are presented in Table 3.

Table 3. Average values of rumen pH, blood glucose, total VFA, ADG, and BCS of PE goats supplemented with organic Cr and garlic flour

Parameter	R ₀	R ₁	R ₂	p-value
rumen pH	6.32±0.19	6.14±0.24	6.22±0.37	0.492
Blood Glucose (mg/dL)	21.64±2.30	23.49±2.33	20.37±2.65	0.080*
Total of VFA (mM)	276.17±18.62	201.71±19.06	226.00±12.13	0.050*
ADG (g/head/hour)	337±22 ^a	405±33 ^b	395±47 ^b	0.004**
BCS	2.22±0.23 ^a	2.49±0.24 ^b	2.69±0.37 ^b	0.020*

Description: R₀ = 40% native grass + 60% concentrate (CP 14.36 %; TDN 66.32 %), R₁ = R₀ + 250 ppm garlic flour, R₂ = R₁ + 1.5 ppm organic Cr, different superscripts on the same line shows significantly different, *significantly significant, **very significant effect

Discussions

Consumption and Digestion

Dry matter consumption in R₁ treatment was higher ($P < 0.05$) than R₀, but tended to be the same as R₂ treatment. Meanwhile, consumption and digestibility of organic matter and dry matter digestibility of PE goats were not affected by supplementation of organic garlic and Cr flour. This indicates that the supplementation of garlic flour and organic Cr slightly affected the rumen microbial development of PE goats. Garlic flour and organic Cr stimulate the activity of feed-digesting bacteria so that the rate of feed exits the rumen faster and the rumen empty quickly so that livestock will increase dry matter consumption (Prayitno et al., 2014). This is related to the ability of garlic's organosulfur compounds to suppress the development of methanogens, so that the H₂ formed in the rumen can be optimally utilized by acetogenic bacteria to produce acetate which is used as an energy source for livestock (Ahiring et al., 2018). Organosulfur compounds in the sulfhydryl group of garlic can alter the metabolism of methanogens by interacting with the sulfhydryl groups of microbial proteins. The sulfhydryl group of methanogens contains enzymes that play a role in metabolism, so that its interaction with the sulfhydryl group of garlic can reduce the formation of methane gas (Gebhardt & Beck, 1996; Panthee et al., 2017)). Miller & Wolin (2001) stated that the inhibition of HMG CoA reductase by organosulfur garlic was specific for the Archaea bacteria group (methanogens) without disturbing other bacteria due to the different lipid composition of cell membranes.

Consumption and digestibility of Crude fiber (CF) treatment R₁ was higher ($P < 0.05$) than R₀ but the same as treatment R₂. Increased consumption and digestibility of Crude fiber (CF) in R₁ treatment indicated that garlic flour did not tend to interfere with cellulolytic

bacteria in digesting cellulose. Similar results were shown in the study of Prayitno et al. (2014) reveal that 0.25 ppm supplementation increased Crude fiber (CF) digestibility by 4.95% in dairy goats. Different results were shown in Prayitno et al. (2016) that 0.25 ppm garlic flour supplementation reduced the digestibility of Crude fiber (CF) and NDF by 9.01% in beef cattle and 5.10% in lactating dairy cows. Meanwhile, the combination of garlic flour and organic Cr supplementation also increased the consumption and digestibility of crude fiber. Cr plays a role in increasing insulin activity by increasing the ability of insulin to bind to target cell receptors. This insulin plays a role in increasing the use of carbohydrates and fats so that the digestibility of crude fiber can increase (Lashkari et al., 2018; Stoecker, 1999).

Garlic flour supplementation and organic Cr did not affect ($P>0.05$) Crude protein (CP) consumption although it tended to decrease compared to R0 but significantly decreased ($P<0.05$) Crude protein (CP) digestibility. Similar results were shown in the study of Prayitno et al. (2019) that supplementation of garlic flour and organic mineral mixture decreased the digestibility of Crude protein (CP) up to 14.24% and 11.87%, respectively. This is related to the organosulfur component that can reduce the activity of the gram-positive bacteria *Prevotella sp.* which plays a role in protein degradation and amino acid deamination. The low protein degradation and amino acid deamination (Mills et al., 2003; Prayitno et al., 2019) causes a lot of protein that is not utilized by microbes so that a lot of it is excreted through feces. Meanwhile, there was an increase in the Crude protein (CP) digestibility in the combination of garlic flour and organic Cr supplementation than only supplemented with garlic flour. This is related to the ability of organic Cr to increase insulin activity which plays a role in increasing protein synthesis, amino acid transport efficiency and reducing protein degradation (Lashkari et al., 2018).

Rumen pH and Blood Glucose

Garlic flour supplementation (R₁) and the combination of garlic flour and organic Cr (R₂) did not affect the rumen pH but tended to decrease compared to the control. However, the decrease in rumen pH was still within the normal range of rumen pH, which is 6-6.8 Blakely & Bade (1991). These results are similar to other studies where rumen pH was not affected by supplementation of garlic components (Ma et al., 2016) and garlic leaves (Panthee et al., 2017). The decrease in rumen pH due to garlic flour supplementation is due to the role of organosulfur in reducing methanogenic activity, causing H₂ formed as a result of metabolism in the rumen to be utilized by other types of bacteria, including acetogenic bacteria that utilize H₂ to produce acetic acid (Ahring et al., 2018). This is in line with the existence increase in total VFA in treatments R1 and R2 (Table 3). In addition to being used by acetogenic bacteria, available H₂ in the rumen that is not used by methanogens is used for the creation of propionic acid, therefore it also has an effect on increasing total VFA, resulting in a reduction in rumen pH (Dijkstra et al., 2012).

Current blood glucose levels of PE goats (20.37-23.49 mg/dL) were lower than Marhaenyanto et al. (2019) that the addition of different types of leaves in the concentrate resulted in blood glucose levels of 60.25-64.25 mg/dL. This difference is thought to be caused by different feeds, growth phases and environmental conditions.

Garlic flour supplementation (R1) and the combination of garlic flour and organic Cr (R2) did not affect blood glucose levels. Supplementation of garlic flour and organic Cr in PE goats in this study was not effective in lowering blood glucose levels. The same findings are revealed by Panthee et al (2017) and Anassori et al. (2015) that supplementation of garlic leaves and garlic oil produced no different plasma glucose. The effectiveness of organic Cr in lowering blood glucose levels was less visible at R2, although it tended to decrease compared to R0. According to Lashkari et al (2018), Cr can increase the activity of cromodulin which is an insulin cofactor. This insulin hormone plays a role in absorbing blood glucose by attaching to receptor cells. It can increase the utilization of carbohydrates and fats, protein synthesis and amino acid transport, and energy use changes that have an impact on increasing dry matter consumption, average body weight gain, carcass parameters, and milk production. Although the supplementation of these two ingredients did not significantly reduce blood glucose levels, garlic flour and organic Cr could increase the average daily gain (ADG) and BCS at R1 and R2. Hence, garlic flour and organic Cr are still effective in increasing livestock productivity through the mechanism of increasing protein and tissue fat synthesis activity.

Average Daily Gain (ADG)

Garlic flour supplementation (R1) and the combination of garlic flour supplementation and organic Cr (R2) were higher ($P < 0.05$) than the control treatment. This shows that the supplementation of these two types of ingredients is effective in increasing the productivity of PE goats. Garlic flour acts as an antimethanogen by directly inhibiting methanogenic activity, causing the diversion of utilization of H_2 compounds for the synthesis of propionate and acetate which play a role in the formation of body tissue and fat. Glucose, acetate, and propionate are needed by the body for intramuscular fat deposition. Propionic acid is a precursor of gluconeogenesis, namely the formation of glucose from non-carbohydrate compounds. Glucose from gluconeogenesis will be used for tissue fat deposition, especially intramuscular fat. Park et al. (2018) reported that glucose is more dominantly required for intramuscular fat deposition than acetate, so the provision of propionate is needed to increase gluconeogenesis activity. Meanwhile, acetate is proven to play a role in external fat deposition (Lunn, 2018). This activity increased the average daily body weight gain of PE goats supplemented with garlic flour.

The combination of garlic flour and organic Cr supplementation resulted in higher average ADG and BCS than the control. Besides the role of garlic flour, the increase in ADG and BCS is also influenced by the role of organic Cr. Organic Cr increases insulin activity which can increase the activity of tissue protein synthesis and amino acid transport, shift the utilization of energy sources, and increase the utilization of carbohydrates and fats. This activity causes livestock to increase dry matter consumption and finally will increase daily body weight gain (Lashkari et al., 2018).

The supplementation of garlic flour (R1) and the combination of supplementation of garlic flour and organic Cr (R2) both increased ADG compared to the control treatment. However, there is a tendency that the R1 treatment resulted in a 3.97% higher ADG than R2. This result is in line with the results of the consumption of dry matter and crude fiber

treatment R2 which is lower than R1 although not significant. The effectiveness of the combination of supplementation of these two ingredients on nutritional parameters and growth of PE goats was the same as that of garlic flour supplementation. This can be the basis that garlic flour supplementation alone is sufficient to increase goat productivity.

Conclusion

The supplementation of 250 ppm garlic flour (R1) and the combination of 250 ppm garlic powder supplementation and organic Chromium (R2) had the same effectiveness in increasing consumption and digestibility, glucose metabolism, and growth performance of goats.

Acknowledgement

The author would like to thank Institute of Research and Community Service, Jenderal Sudirman University of the which funded this study under contract number 1071/UN.23/HK.02/2021

Conflict of interest

The authors have declared no conflict of interest

Authors' contribution

All authors contributed to conducting research and writing this manuscript

References :

- [1]. Ahring, B. K., Murali, N., & Srinivas, K. (2018). Fermentation of Cellulose with a Mixed Microbial Rumen Culture with and without Methanogenesis. *Fermentation Technology*, 07(01). <https://doi.org/10.4172/2167-7972.1000152>
- [2]. Anassori, E., Dalir-Naghadeh, B., Pirmohammadi, R., & Hadian, M. (2015). Changes in blood profile in sheep receiving raw garlic, garlic oil or monensin. *Journal of Animal Physiology and Animal Nutrition*, 99(1). <https://doi.org/10.1111/jpn.12189>
- [3]. Bernhard, B. C., Burdick, N. C., Rathmann, R. J., Carroll, J. A., Finck, D. N., Jennings, M. A., Young, T. R., & Johnson, B. J. (2012). Chromium supplementation alters both glucose and lipid metabolism in feedlot cattle during the receiving period. *Journal of Animal Science*, 90(13). <https://doi.org/10.2527/jas.2011-4982>
- [4]. Blakely, J., & Bade, D. H. (1991). *Ilmu Peternakan (Terjemahan)*. Edisi keempat. Gadjah Mada University Press. Yogyakarta. Products. *Nutrition and Food Science*, 38, 540–547.
- [5]. Busquet, M., Calsamiglia, S., Ferret, A., & Kamel, C. (2006). Plant extracts affect in vitro rumen microbial fermentation. *Journal of Dairy Science*, 89(2). [https://doi.org/10.3168/jds.S0022-0302\(06\)72137-3](https://doi.org/10.3168/jds.S0022-0302(06)72137-3)
- [6]. Dijkstra, J., Ellis, J. L., Kebreab, E., Strathe, A. B., López, S., France, J., & Bannink, A. (2012). Ruminant pH regulation and nutritional consequences of low pH. *Animal Feed Science and Technology*, 172(1–2). <https://doi.org/10.1016/j.anifeedsci.2011.12.005>
- [7]. Gebhardt, R., & Beck, H. (1996). Differential inhibitory effects of garlic-derived

- organosulfur compounds on cholesterol biosynthesis in primary rat hepatocyte cultures. *Lipids*, 31(12). <https://doi.org/10.1007/BF02587912>
- [8]. Haldar, S., Mondal, S., Samanta, S., & Ghosh, T. K. (2009). Effects of dietary chromium supplementation on glucose tolerance and primary antibody response against peste des petits ruminants in dwarf Bengal goats (*Capra hircus*). *Animal*, 3(2). <https://doi.org/10.1017/S1751731108003418>
- [9]. international, A. (2006). AOAC International Guidelines for Laboratories Performing Microbiological and Chemical Analyses of Food and Pharmaceuticals: An Aid to Interpretation of ISO/IEC 17025: 2005. AOAC international.
- [10]. Lashkari, S., Habibian, M., & Jensen, S. K. (2018). A Review on the Role of Chromium Supplementation in Ruminant Nutrition—Effects on Productive Performance, Blood Metabolites, Antioxidant Status, and Immunocompetence. *Biological Trace Element Research*, 186(2). <https://doi.org/10.1007/s12011-018-1310-5>
- [11]. Lunn, D. (2018). Managing and Feeding for Marbling and Carcass Quality in Beef Cattle. Nutrifax, Nutrition News and Information Update. Shur-Gain, Nutreco Canada Inc. <https://www.wrightsfeeds.ca/wp-content/uploads/Managing-and-Feeding-for-Marbling-and-Carcass-Quality-in-Beef-Cattle.pdf>
- [12]. Ma, T., Chen, D., Tu, Y., Zhang, N., Si, B., Deng, K., & Diao, Q. (2016). Effect of supplementation of allicin on methanogenesis and ruminal microbial flora in Dorper crossbred ewes. *Journal of Animal Science and Biotechnology*, 7(1). <https://doi.org/10.1186/s40104-015-0057-5>
- [13]. Marhaeniyanto, E., Susanti, S., Siswanto, B., & Murti, A. T. (2019). Profil Darah Kambing Peranakan Etawa Jantan Muda Yang Disuplementasi Daun Tanaman Dalam Konsentrat.
- [14]. Miller, T. L., & Wolin, M. J. (2001). Inhibition of growth of methane-producing bacteria of the ruminant forestomach by hydroxymethylglutaryl~SCoA reductase inhibitors. *Journal of Dairy Science*, 84(6). [https://doi.org/10.3168/jds.S0022-0302\(01\)70177-4](https://doi.org/10.3168/jds.S0022-0302(01)70177-4)
- [15]. Mills, J. A. N., Kebreab, E., Yates, C. M., Crompton, L. A., Cammell, S. B., Dhanoa, M. S., Agnew, R. E., & France, J. (2003). Alternative approaches to predicting methane emissions from dairy cows. *Journal of Animal Science*, 81(12). <https://doi.org/10.2527/2003.81123141x>
- [16]. Panthee, A., Matsuno, A., Al-Mamun, M., & Sano, H. (2017). Effect of feeding garlic leaves on rumen fermentation, methane emission, plasma glucose kinetics, and nitrogen utilization in sheep. *Journal of Animal Science and Technology*, 59(1). <https://doi.org/10.1186/s40781-017-0139-3>
- [17]. Park, S. J., Beak, S. H., Jung, D. J. S., Kim, S. Y., Jeong, I. H., Piao, M. Y., Kang, H. J., Fassah, D. M., Na, S. W., Yoo, S. P., & Baik, M. (2018). Genetic, management, and nutritional factors affecting intramuscular fat deposition in beef cattle - A review. In *Asian-Australasian Journal of Animal Sciences* (Vol. 31, Issue 7). <https://doi.org/10.5713/ajas.18.0310>
- [18]. Patra, A. K., & Yu, Z. (2015). Effects of garlic oil, nitrate, saponin and their

- combinations supplemented to different substrates on in vitro fermentation, ruminal methanogenesis, and abundance and diversity of microbial populations. *Journal of Applied Microbiology*, 119(1). <https://doi.org/10.1111/jam.12819>
- [19]. Prayitno, C. H., Subagyo, Y., & Suwarno. (2013). Supplementation of sapindus rarak and garlic extract in feed containing adequate Cr, Se, and Zn on rumen fermentation. *Media Peternakan*, 36(1). <https://doi.org/10.5398/medpet.2013.36.1.52>
- [20]. Prayitno, C. H., & Widyastuti, T. (2010). Kajian selenomethionin, Chromium Yeast, dan Seng Proteinat pada Pakan Sapi Perah (Tinjauan secara In-Vitro). *Prosiding Seminar Nasional: Perspektif Pengembangan Agribisnis Peternakan*.
- [21]. Prayitno, C.H., Subagyo, Y., & Jayanegara, A. (2019). Nutrient Utilization and Milk Yield of Dairy Cows Fes a Diet Containing Monensin, Garlic Peel, and Organic Minerals During the Lactation Period. *Advance in Animal and Veterinary Sciences*, 7(4), 1–5. <https://doi.org/10.17582/journal.aavs/2019/7.5.412.416>
- [22]. Prayitno, C. H., Rahardjo, T., Sutardi, & Suwarno. (2014). Supplementation Effect of Herbal and Organic Minerals in Beef Cattle Feed on Consumption, Digestibility, Efficiency and Daily Gain. In *Animal Production* (Vol. 16, Issue 2).
- [23]. Prayitno, C. H. & Suwarno. (2017). The Effectivity of Garlic Cake Extract as an Antimethanogenic Agent in the Feed of Beef Cattle. In *Proceeding of the 1st International Conference on Tropical Agriculture*. https://doi.org/10.1007/978-3-319-60363-6_35
- [24]. Prayitno, C. H., Suwarno, Susanto, A., & Jayanegara, A. (2016). Effect of garlic extract and organic mineral supplementation on feed intake, digestibility and milk yield of lactating dairy cows. *Asian Journal of Animal Sciences*, 10(3). <https://doi.org/10.3923/ajas.2016.213.218>
- [25]. Shang, A., Cao, S.-Y., Xu, X.-Y., Gan, R.-Y., Tang, G.-Y., Corke, H., Mavumengwana, V., & Li, H.-B. (2019). Bioactive compounds and biological functions of garlic (*Allium sativum* L.). *Foods*, 8(7), 246.
- [26]. Stoecker, B. J. (1999). Chromium absorption, safety, and toxicity. *The Journal of Trace Elements in Experimental Medicine: The Official Publication of the International Society for Trace Element Research in Humans*, 12(2), 163–169.
- [27]. Szychowski, K. A., Rybczyńska-Tkaczyk, K., Gawel-Bęben, K., Aświeca, M., Kara, M., Jakubczyk, A., Matysiak, M., Binduga, U. E., & Gmiński, J. (2018). Characterization of Active Compounds of Different Garlic (*Allium sativum* L.) Cultivars. *Polish Journal of Food and Nutrition Sciences*, 68(1). <https://doi.org/10.1515/pjfn-2017-0005>
- [28]. Yang, C., Chowdhury, M. A. K., Hou, Y., & Gong, J. (2015). Phytogetic compounds as alternatives to in-feed antibiotics: Potentials and challenges in application. In *Pathogens* (Vol. 4, Issue 1). <https://doi.org/10.3390/pathogens4010137>