

Part of **SPRINGER NATURE**

PROCEEDINGS | JOURNALS | BOOKS

---

Search

Series: **Advances in Physics Research**

# Proceedings of the Soedirman International Conference on Mathematics and Applied Sciences (SICOMAS 2021)

---

## ORGANIZERS

---

### Chairman

**Jamrud Aminuddin, Ph.D.**

Universitas Jenderal Soedirman, Indonesia

### Editors of Physics

**Dr. Bilalodin**

Universitas Jenderal Soedirman, Indonesia

**Prof. Wahyu Tri Cahyanto, Ph.D.**

Universitas Jenderal Soedirman, Indonesia

**Đỗ Ngọc Sơn, Ph.D.**

Ho Chi Minh City University of Technology, Vietnam

**Dr. Sangeetha Gnanapragasam**

University of Madras, India

### Editors of Mathematics

**Sri Marwani, Ph.D.**

**Sumiyani, Ph.D.**

Universitas Jenderal Soedirman, Indonesia

**Bambang Hendriya G, Ph.D.**

Universitas Jenderal Soedirman, Indonesia

**Dr. Wolfgang Bock**

Technische Universtat Kaiserslautern, Germany

**Dr. Oliver Tse**

Technische Universtat Eindhoven, Netherland

## **Editors of Chemistry**

**Dadan Hermawan, Ph.D.**

Universitas Jenderal Soedirman, Indonesia

**Uyi Sulaeman, Ph.D.**

Universitas Jenderal Soedirman, Indonesia

**Wahyu Satpriyo Putro, Ph.D.**

National Institute of Advanced Industrial Science and Technology (AIST),  
Japan

## **Atlantis Press**

Atlantis Press – now part of Springer Nature – is a professional publisher of scientific, technical & medical (STM) proceedings, journals and books. We offer world-class services, fast turnaround times and personalised communication. The proceedings and journals on our platform are Open Access and generate millions of downloads every month.

For more information, please contact us at: [contact@atlantis-press.com](mailto:contact@atlantis-press.com)

- ▶ PROCEEDINGS
- ▶ JOURNALS
- ▶ BOOKS
- ▶ POLICIES
- ▶ MANAGE COOKIES/DO NOT SELL MY INFO
- ▶ ABOUT
- ▶ NEWS
- ▶ CONTACT
- ▶ SEARCH

---

[Home](#) [Privacy Policy](#) [Terms of use](#)   

Copyright © 2006-2022 Atlantis Press – now part of Springer Nature

Part of **SPRINGER NATURE**

[PROCEEDINGS](#) | [JOURNALS](#) | [BOOKS](#)

---

Search

Series: [Advances in Physics Research](#)

## Proceedings of the Soedirman International Conference on Mathematics and Applied Sciences (SICOMAS 2021)

---

ARTICLES

---

Search

[+ Advanced search](#)

SEARCH

**25** articles

---

### Proceedings Article

## Photocatalytic and Kinetics Study of Copper Oxide on the Degradation of Methylene Blue Dye

Anung Riapanitra, Kapti Riyani, Tien Setyaningtyas

Methylene blue dyes in is widely used various industries in Indonesia, especially in the textile industry. Methylene blue in waters is toxic and difficult to degrade. One of the methods used is to overcome this problem is photocatalysis under visible light. CuO photocatalyst was prepared using an easy...

[+ Article details](#)

[+ Download article \(PDF\)](#)

---

### Proceedings Article

## Prediction of Enantioseparation of Econazole on the Cyclodextrin Derivatives as Chiral Selectors by Molecular Docking Approach

Dadan Hermawan, Cacu Cacu, Nurul Alif Septiorini, Ponco Iswanto, Uyi Sulaeman, Hasan Y Aboul-Enein

Molecular docking approach has been successfully developed for prediction of enantioseparation of econazole on the cyclodextrin derivatives namely sulfated- $\beta$ -cyclodextrin (S- $\beta$ -CD) and hydroxypropyl- $\gamma$ -cyclodextrin (HP- $\gamma$ -CD) as chiral selectors. Molecular docking was performed using AutoDock Vina software...

[+ Article details](#)

[+ Download article \(PDF\)](#)

---

### Proceedings Article

## Development of Ketorolac Analysis in Water Samples using Micellar Electrokinetic Chromatography

Dadan Hermawan, Cacu Cacu, Amin Fatoni, Suwandri, Wan Aini Wan Ibrahim, Hasan Y Aboul-Enein

Quantitative determination of ketorolac, a nonsteroidal anti-inflammatory drug (NSAID) in water samples was reported using the micellar electrokinetic chromatography (MEKC) method. The on-line preconcentration technique at MEKC was then investigated to increase the detection sensitivity of ketorolac....

[+ Article details](#)

[+ Download article \(PDF\)](#)

---

### Proceedings Article

## Reducing Levels of Methyl Orange Dye using Crosslinked Chitosan–Tripolyphosphate

Mardiyah Kurniasih, Anung Riapanitra, Riyanti Riyanti, Dwi Kartika, Der Rositasari

Chitosan in acid was polycationic and can react with negative charges like tripolyphosphate. Tripolyphosphate was a crosslinking agent with low toxicity. This study was to review the ability of crosslinked chitosan-tripolyphosphate (Cs-TPP) in reducing the color levels of methyl orange. Synthesizing...

[+ Article details](#)

[+ Download article \(PDF\)](#)

---

#### Proceedings Article

### Estimation of Neonatal Jaundice from the Chest Images Captured with a Smartphone

Mekar Dwi Anggraeni, Amin Fatoni, Eni Rahmawati, Ismei Nartiningsih

Hyperbilirubinemia is a common problem in neonatal for contact with the healthcare facilities. Several methods have been used to determine the bilirubin concentration. However, it is not easy to find the healthcare with the instrument to detect bilirubin, mainly in rural area. This research was aimed...

[+ Article details](#)

[+ Download article \(PDF\)](#)

---

#### Proceedings Article

### The Graphs of the CDF, Power and Its Interpretation on Several Types of Binomial Probability Distribution

Budi Pratikno, Evita Luaria Wulandari, Jajang Jajang, Junita Sage Sianipar, Mashuri Mashuri

The research discussed the graphically analyzed of the cumulative distribution function (cdf), and the power function of hypothesis testing on the binomial distribution. In this research, we also showed (derived) the

formula of the power function on special case of binomial such us Negat Binomial...

[+ Article details](#)

[+ Download article \(PDF\)](#)

---

### Proceedings Article

## The Dengue Hemorrhagic Fever Modeling in Banyumas Regency by Using CAR-BYM, Generalized Poisson, and Negative Binomial

Jajang Jajang, Budi Pratikno, Mashuri Mashuri, Indriani Eko Cahyarini

The research studied disease mapping of dengue haemorrhagic fever (DHF) in Banyumas Regency. The generalized Poisson (GP), negative binomial (NB), and CAR-BYM models are then used to modelling the DHF. The predictor variables used in this research are the number of health worker, altitude, and population...

[+ Article details](#)

[+ Download article \(PDF\)](#)

---

### Proceedings Article

## Coefficient Estimates in the Class of Bazilevic Functions $\mathcal{B}_1(\alpha)$ Related to the Lemniscate Bernoulli

Ni Made Asih, Marjono Marjono, Sa'adatul Fitri, Ratno Bagus E.W

In this research, we estimate the coefficient in the class of Bazilevic functions  $\mathcal{B}_1(\alpha)$  related to the Lemniscate Bernoulli on the unit disk  $\mathbb{D}=\{z:|z| < 1\}$ , satisfying subordination condition  $[f'(z)(f(z)z)^{\alpha-1}]<1+z$ , for  $z \in \mathbb{D}$ . The upper bound of the modulus of  $a_2$  and  $a_3$  are determined.

[+ Article details](#)

[+ Download article \(PDF\)](#)

---

**Proceedings Article**

## Solution Formula of the Half-Space Model Problem for Incompressible Fluid Flow

Maria Leonids Berlian Candra Dewi, Sri Maryani, Ari Wardayani, Bambang Hendriya Guswanto

In this paper we determine a slightly detailed the solution formula of the incompressible fluid flows by using Fourier transform in N-dimensional Euclidean space ( $N \geq 2$ ) for the linearized equations. For further research, from this result we can estimate the boundedness of the operator families. This...

[+ Article details](#)

[+ Download article \(PDF\)](#)

---

**Proceedings Article**

## Stability Analysis of Biological Wastewater Treatment in Facultative Stabilization Ponds: Mathematical Model

Mia Nur Islami, Sunarsih Sunarsih, R Heru Tjahjana

Wastewater stabilization pond is a very large pond where wastewater is stored for a long time, in that pond there is a biological process of organic matter in the sludge produced from primary deposition, and it's resulting in stable biological treatment of wastewater. Wastewater treatment is used to...

[+ Article details](#)

[+ Download article \(PDF\)](#)

---

**Proceedings Article**

## Analysis of Mathematical Connection Abilities in the Seventh Grade Students of SMP Muhammadiyah Pakem in Solving Line and Angle Question

Ririn Adi Nurhudha, Riyadi Riyadi, Sri Subanti



Currently, the development of the quality of human resources will determine the progress of a nation. The era of the industrial revolution 4.0 requires someone to master several skills, one of which is the ability of students' mathematical connections. By having mathematical connection skills, students...

[+ Article details](#)

[+ Download article \(PDF\)](#)

---

#### Proceedings Article

### Hadamard Matrix on Cryptographic Problems

Salman Al Farizi, Mashuri Mashuri, Bambang Hendriya Guswanto

The application of matrices to cryptographic problems, especially with Hill Cipher algorithm, needs an invertible matrix as a key and a plaintext's difuser. One of the invertible matrices is a Hadamard matrix (H). The Hadamard matrix is applied to cryptographic problems with Hill Cipher algorithm by...

[+ Article details](#)

[+ Download article \(PDF\)](#)

---

#### Proceedings Article

### The Existence of the Moore-Penrose Inverse in Symmetrized Max-Plus Algebraic Matrix

Suroto Suroto, Najmah Istikaanah, Renny Renny

In this paper we discuss Moore-Penrose inverse in symmetrized max-plus algebraic matrix. The existence of Moore-Penrose inverse is shown using a link among symmetrized max-plus algebra and conventional algebra. The result is a Moore-Penrose inverse in symmetrized max-plus algebraic matrix exists. Furthermore,...

[+ Article details](#)

[+ Download article \(PDF\)](#)

---

**Proceedings Article**

## The Properties of the $R^n$ Module over the Matrix Ring $M_{n \times n}$

Triyani Triyani, Ari Wardayani, Alfalfa Amruhasanah

This paper discusses the properties of the  $R^n$  module over the matrix ring  $M_{n \times n}(R)$  related to the torsion module, prime module, multiplication module, and faithful module. The study results concluded that the  $R^n$  module over the matrix ring  $M_{n \times n}(R)$  is a torsion module because each element of  $R^n$  is a torsion...

[+ Article details](#)

[+ Download article \(PDF\)](#)

---

**Proceedings Article**

## A Short Note on the Complex Conjugate for Derivatives

Abdul Manan

The complex conjugate approach could be used easily to solve derivatives analytically for some simple cases in calculus. These cases are common topics in calculus which are functions of trigonometry, hyperbole, exponential and logarithm. In general, the derivative obtained from the component  $v$  is rearranged...

[+ Article details](#)

[+ Download article \(PDF\)](#)

---

**Proceedings Article**

## Design of Radiography Film Dryer Machine Using Timer

Efita Pratiwi Adi, Anita Nur Mayani, Hendri Ermawan

Drying is the final step of the film processing cycle which aims to remove the water present in the emulsion layer. The result of the film processing is an undamaged emulsion, free from dust particles, crystal deposits, stains, and artifacts. This research aims to make radiography film dryer with a timer....

[+ Article details](#)[+ Download article \(PDF\)](#)

---

### Proceedings Article

## Identification of the Existence of Inferred Menanga Fault based on Gravity Anomaly, Pesawaran, Lampung

Izaina Nurfitriana, Purwaditya Nugraha, Rizki Wulandari, Erlangga Ibrahim F, Adhi Wibowo

Inferred Menanga fault is one of fault that is still questionable whether it exists or not. It is located in Pesawaran regency, Lampung, exactly near Ratai Mountain with SE-W orientation and almost crosses the summit of Mount Ratai. The existence is sticking out and needs to be studied since there were...

[+ Article details](#)[+ Download article \(PDF\)](#)

---

### Proceedings Article

## Development and Testing of Artificial Neural Network with Backpropagation Algorithm to Predict the Power Ratio of Savonius Wind Turbine

Jamrud Aminuddin, Bilalodin Bilalodin

A power ratio of Savonius as a vertical wind type has been predicted using an artificial neural network (ANN) with a backpropagation algorithm. The ANN is a method for processing information that is adapted from a biological neuron. This method is developed from the principle of a human being's brain...

[+ Article details](#)[+ Download article \(PDF\)](#)

**Proceedings Article**

## Detection and Characterization of Lung Cancer using CT Scan Technology

Lilik Lestari, Susilo Susilo

Today, lung cancer is one of the deadliest diseases in the world, with an early sign of Lung Nodule. One of the standard procedures to detect it is a radiological examination using Computed Tomography (CT) Scan technology. This study aims to describe the use of CT Scan to detect the presence of lung...

[+ Article details](#)

[+ Download article \(PDF\)](#)

---

**Proceedings Article**

## Characteristics of Rock Minerals of the Camba Formation

Muhammad Altin Massinai, Muh. Remy Syam, Muhammad Fawzy Ismullah Massinai

The Camba Formation (Tmcv) of Tertiary age is spread over the southern part of South Sulawesi, especially in Gowa and Maros Regencies. The Camba Formation, which consists of igneous rocks from the ancient Camba volcano, has different mineral characteristics. Analysis of mineral characteristics using...

[+ Article details](#)

[+ Download article \(PDF\)](#)

---

**Proceedings Article**

## Design of Corrugated Diaphragm-Based MEMS Pressure Sensor for Biomedical Applications

P Rinihaa Sibishree, G Gnanasangeetha

In this work we present the simulation analysis of a Micro Electro Mechanical Systems (MEMS) based capacitive pressure sensor for the measurement of blood pressure in the range 0 - 40kPa. We consider a circular

corrugated silicon diaphragm and simulate the diaphragm's response to applied pressure....

[+ Article details](#)

[+ Download article \(PDF\)](#)

---

#### Proceedings Article

### Power Spectrum Analysis of the Satellite Gravity Anomalies Data to Estimate the Thickness of Sediment Deposits in the Purwokerto-Purbalingga Groundwater Basin

Sehah, Urip Nurwijayanto Prabowo, Sukmaji Anom Raharjo, Laila Ariska

Analysis of power spectrum of the satellite gravity anomalies data has been carried out to estimate the thickness of sediment deposits in the Purwokerto-Purbalingga Groundwater Basin. Power spectrum analysis uses the Fourier transform principle by converting data from the space domain to the frequency...

[+ Article details](#)

[+ Download article \(PDF\)](#)

---

#### Proceedings Article

### Calculations of the Potential Energy Surface for a Water Molecule Dissociation on the Pt (111) Surface

Siti Zulaehah, Diska Nirmala Wahyu Dinasty, Allan Abraham Bustria Padama, Wahyu Tri Cahyanto

We present a density functional theory (DFT) study of the dissociation pathway of monomeric H<sub>2</sub>O into adsorbed hydroxyl (OH<sub>ads</sub>) and hydrogen (H<sub>ads</sub>) on the Pt(111) surface. Here we consider the Langmuir-Hinshelwood process of adsorbed monomeric H<sub>2</sub>O, which is then dissociated on the surface model. By calculating...

[+ Article details](#)

[+ Download article \(PDF\)](#)

---

**Proceedings Article**

## Application of the Conjugate-Gradient Method for Analysing the Optimum Thrust Force for the Pico-Hydropower

Sunardi Sunardi, Jamrud Aminuddin, Wuryatmo Akhmad Sidik, Akmal Ferdiyan, Urip Nurwijayanto Prabowo, Zulkaida Akbar

A water thrust from the nozzle is the main factor for the optimizing of the pico-hydropower system. The previous study indicated that the optimal water trust resulting from the balance between the forebay tank and penstock pipe. The study of the balances has been conducted by governing of Bernoulli equation...

[+ Article details](#)

[+ Download article \(PDF\)](#)

---

**Proceedings Article**

## Was the Pesawaran Swarm Induced by Magmatic Fluids? Insight from Magnetic Method Analysis

Yudha Styawan, Izaina Nurfitriana, Rizky Wulandari

An earthquake swarm in January 2021 triggered research related to adjacent geological structures, mainly inferred Menanga fault having predicted in the previous studies. This study is focused on investigating the fault and volcanic -related activity in terms of magnetic field anomalies due to sensitivity...

[+ Article details](#)

[+ Download article \(PDF\)](#)

---

Atlantis Press – now part of Springer Nature – is a professional publisher of scientific, technical & medical (STM) proceedings, journals and books. We offer world-class services, fast turnaround times and personalised communication. The proceedings and journals on our platform are Open Access and generate millions of downloads every month.

For more information, please contact us at: [contact@atlantis-press.com](mailto:contact@atlantis-press.com)

- ▶ PROCEEDINGS
- ▶ JOURNALS
- ▶ BOOKS
- ▶ POLICIES
- ▶ MANAGE COOKIES/DO NOT SELL MY INFO
- ▶ ABOUT
- ▶ NEWS
- ▶ CONTACT
- ▶ SEARCH

---

[Home](#) [Privacy Policy](#) [Terms of use](#)



Copyright © 2006-2022 Atlantis Press – now part of Springer Nature

Part of **SPRINGER NATURE**

[PROCEEDINGS](#) | JOURNALS | BOOKS

---

Search

# Advances in Physics Research

---

## PUBLISHING INFO

---

## Publishing Information

### ISSN

The online ISSN of *Advances in Physics Research* is **2352-541X**.

### Series Editors

- > *Editor*: **Chuan-Pei Lee**, University of Taipei, Taipei, Taiwan
- > *Editor*: **Huang Weimin**, Nanyang Technological University, Jurong West, Singapore

### Indexation

All articles published in proceedings in this series are submitted for indexation in **CPCI** (part of Clarivate's **Web of Science**), **CNKI**, **Wanfang Data** and **Google Scholar**. Where applicable, they are also submitted to **Ei Compendex** and **Scopus**. For any information about the indexation of a particular proceedings in this series, you are requested to contact the conference organizers (see individual proceedings pages for details) as we are not able to respond to messages received directly from participants.

### Open Access & Publication Fees

*Advances in Physics Research* is an **open access** proceedings series, meaning that all articles are immediately and permanently free to read, download, copy & distribute under the terms of the applicable end-user license (refer to the **Copyright & End-User License** section on this page for further details). The online publication of each proceedings is sponsored by the conference



organizers and hence **no additional publication fees** are required.

## Copyright & End-User License

The copyright of all articles published in this series remains with **the Authors**, i.e. Authors retain full ownership of their article. Permitted third-party reuse of the open access articles is defined by the applicable **Creative Commons (CC)** end-user license which is accepted by the Authors upon submission of their paper. All articles in *Advances in Physics Research* are published under the **CC BY-NC 4.0** license, meaning that end users can freely **share** an article (i.e. copy and redistribute the material in any medium or format) and **adapt** it (i.e. remix, transform and build upon the material) on the condition that proper **attribution** is given (i.e. appropriate credit, a link to the applicable license and an indication if any changes were made; all in such a way that does not suggest that the licensor endorses the user or the use) and the material is only used for **non-commercial** purposes. For more information, please refer to the **User Licenses** section in the Atlantis Press **Open Access & Article Sharing** policy.

## Peer Review

All proposals for proceedings to be published in this series are first evaluated by a **Series Editor(s)** and/or a **scientific evaluation committee** consisting of senior researchers in the relevant field. If accepted, the peer review process for the individual articles within each proceedings is under the responsibility of the **conference organizers** and the **Guest Editors** of each volume, who are committed to conducting the peer review in line with **international scientific standards**. The **Series Editor(s)** subsequently also perform(s) a final check of the scientific quality of the accepted papers before the articles are released for publication. For more information, please refer to the individual proceedings page and/or the conference website.

## Code of Ethics & Malpractice Statement

Atlantis Press adheres to the ethical frameworks and guidelines of the **Committee on Publication Ethics (COPE)**, including the **COPE Core Practices** and the **Principles of Transparency and Best Practice in Scholarly Publishing**. All ethical and misconduct cases for this series are handled according to

these guidelines. For proceedings in particular, Atlantis Press also applies **IEEE Conference Standards** for conference ethics and quality control. For detailed information on current conference ethics and quality control in proceedings publications, please read the **IEEE white paper** which has been endorsed by Atlantis Press. Note that the editorial team of *Advances in Physics Research* verifies the originality of submitted manuscripts using similarity detection software.

## DOIs

Each article that is published in a proceedings in this series is assigned a **Digital Object Identifier** (DOI). DOIs are standardized digital identities which can be used to cite and link to electronic content. A DOI is guaranteed to never change, so can be used as a persistent identifier to permanently link to an electronic article no matter where it is stored. More information on how to cite and use DOIs can be found [here](#).

## Permanent Archiving

Atlantis Press is committed to the **permanent availability** and **preservation** of scholarly research and to ensure **accessibility** to this research by converting and upgrading digital file formats to comply with new technology standards. Besides maintaining its own digital archive, Atlantis Press therefore collaborates with the **National Library of the Netherlands** which permanently archives all Atlantis Press content in their “**e-Depot**”. All volumes of *Advances in Physics Research* are uploaded to this e-Depot after publication to guarantee permanent archiving of the articles. Note that the e-Depot is available through on-site access at the National Library of the Netherlands and if Atlantis Press would be unable to provide access to content on its own platform (temporarily, in an emergency or permanently) access to the e-Depot can be provided to the global public on request.

## Print Version

All Atlantis Press proceedings can be ordered in **print**, either as a **bulk order** through the conference organizers or **individually**. If you wish to obtain an individual print copy of any proceedings in this series, you can order this directly through our partner **Curran Associates**. Please [visit their website](#) for more details.

## Atlantis Press

Atlantis Press – now part of Springer Nature – is a professional publisher of scientific, technical & medical (STM) proceedings, journals and books. We offer world-class services, fast turnaround times and personalised communication. The proceedings and journals on our platform are Open Access and generate millions of downloads every month.

For more information, please contact us at: [contact@atlantis-press.com](mailto:contact@atlantis-press.com)

- ▶ PROCEEDINGS
- ▶ JOURNALS
- ▶ BOOKS
- ▶ POLICIES
- ▶ MANAGE COOKIES/DO NOT SELL MY INFO
- ▶ ABOUT
- ▶ NEWS
- ▶ CONTACT
- ▶ SEARCH

---

[Home](#) [Privacy Policy](#) [Terms of use](#)



Copyright © 2006-2022 Atlantis Press – now part of Springer Nature

# Development and Testing of Artificial Neural Network with Backpropagation Algorithm to Predict the Power Ratio of Savonius Wind Turbine

Jamrud Aminuddin<sup>1, \*</sup> Bilalodin Bilalodin<sup>1</sup>

<sup>1</sup> Department of Physics, Faculty of Mathematics and Natural Sciences, Universitas Jenderal Soedirman, Jl. dr. Suparno, 61, Grendeng, Purwokerto Utara, 53122, Jawa Tengah, Indonesia.

\*Corresponding author. Email: [jamrud.aminuddin@unsoed.ac.id](mailto:jamrud.aminuddin@unsoed.ac.id)

## ABSTRACT

A power ratio of Savonius as a vertical wind type has been predicted using an artificial neural network (ANN) with a backpropagation algorithm. The ANN is a method for processing information that is adapted from a biological neuron. This method is developed from the principle of a human being's brain which consists of input and output neurons. The procedure in this method is conducted using the initial input as the power ratio target to predict the next value as the output target. This prediction is employed to know the blade characteristic and its effect on the power. The ANN architecture is multi-layers with a backpropagation algorithm. The layers are input, hidden, and output. The learning rule is consisting of the forward-propagation, backward-propagation, and weight-update with the number of neurons being 2-5-1, respectively. The result of this development and testing shows that the optimum values for momentum and learning rate are 0.90 and 0.01, respectively. The result has been tested by comparing the output and input with an error of approximately 0.65%. This result indicates that the ANN method with backpropagation algorithm is prospective to predict the power ratio of various blades of Savonius wind turbine.

**Keywords:** ANN, rotor, Savonius, wind.

## 1. INTRODUCTION

The use of new and renewable energies of natural resources is indispensable for supplying electric power especially in remote areas [1-3]. In the last decade, the use of alternative energy has increased significantly, such as hydropower, solar, biomass, wind, geothermal, ocean waves, and tidal. [4-8]. The alternative energy that has not been explored intensively is wind energy. As an abundant source of energy, wind energy will remain as long as the earth still gets energy from the sun. By applying the right energy conversion technology, wind energy is expected to be an environmentally friendly energy source that will never run out [9-11].

A problem with wind energy exploration is the low wind speed under the normal condition, at approximately 2.5 – 6.0 m/s [12-14]. This potential is on average quite low, but actually, quite a lot of areas have wind energy potential that is feasible to be utilized, especially as electrical energy. The situation certainly

has an impact on the low electrical energy produced, so the installation price becomes very expensive [13, 14]. For example, if a wind turbine can produce power of 10 kW at a wind speed of 10 m/s, then if the wind speed is only 5 m/s the power produced by the wind turbine is only about 1.25 kW. For this reason, to produce 10 kW of power, 8 units of wind turbines are needed [14, 15]. This condition causes the cost of producing electricity from wind turbines to be very expensive, even economically unfeasible.

For wind energy to be used intensively, it is necessary to engineer wind turbines that can work at low wind speeds and can also produce large amounts of energy. Several modifications have been produced and applied, such as variations in rotor surface area, low-speed generators, a reduced moment of inertia, and higher pile applications [12-15]. Besides, the engineering that has been carried out related to the effectiveness of the rotor in wind turbines is the use of the vertical axis. A form of vertical turbine that is considered effective in the conversion process of

potential energy from the wind into mechanical energy in the form of rotor rotation is Savonius turbine. The effectiveness value is known after being compared with the two vertical turbine types, namely Darrieus and H-rotor [13, 15, 18, 19]. Furthermore, the geometric shape of the Savonius turbine has also been analyzed by considering the number of blades where the performance coefficient for the two blades shows an increase of about 27.3% [20-22].

In this study, simulation and performance analysis of a two-blade Savonius turbine were carried out using the artificial neural network (ANN) method. This algorithm was developed based on the ANN method for the same case with different approximations. Prediction of power and torque performance with the ANN method has been successfully used for a three-bucket Savonius [23, 24]. In addition, this method was developed based on the analysis of power and torque for the case of the multi-blade effect [23-25]. The results of this simulation are expected to be used as a basis for the manufacture of the Savonius wind turbine. The power ratio of the Savonius wind turbine is expected to be predicted by using an artificial neural network method with a backpropagation algorithm.

## 2. METHOD

### 2.1 Power ratio formula for Savonius turbine

The Savonius wind turbine is a type of vertical axis wind turbine. The rotation of the axis is perpendicular to the direction of the wind. The Savonius rotor includes two semicircular axes (diameter and height are  $D$  and  $H$ , respectively) and there is a gap spacing ( $S$ ) as shown in Figure 1 parts (a) and (b). The Savonius rotor is varied with six different axes in a wind tunnel. In rotors I to VI, each axis is semicircular with the same diameter but the distance gap varies as shown in Figure 1 part (c) [19-21].

The power ratio is assumed as the comparison of the power in the turbine axis ( $P_g$ ) and the power from wind force ( $P_a$ ). The ratio is written in the form:

$$C_p = P_g / P_a . \quad (1)$$

The product of the power equation in the shaft shows that only the ratio of the power of the force equal to the direction of effective rotation can generate electricity. Therefore, the blade model on a vertical axis turbine is very important [21]. Furthermore, the variable of the tip speed ratio ( $\lambda$ ) is represented as

$$\lambda = \frac{u}{v} = \frac{\omega D}{2v} . \quad (2)$$

Here, the power ratio ( $C_p$ ) can be determined using

$$C_p = \frac{2Fu}{\rho v^3 DH} . \quad (3)$$

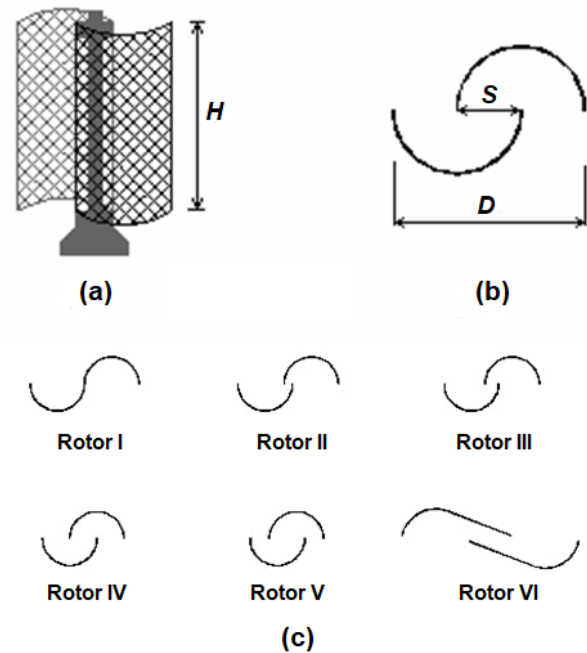
By substituting equation (2) into equation (3), the general form of the power ratio can be simplified in the form

$$C_p = \frac{2F}{\rho v^2 DH} . \quad (4)$$

The Reynold number ( $Re$ ) for this case is

$$Re = \frac{uD}{\nu} \quad (5)$$

The symbols of  $D$ ,  $u$ ,  $\nu$ , and  $F$  in equations (4) and (5) are the rotor diameter, blade tip speed, kinematic viscosity, and thrust force, respectively [23,25].



**Figure 1** Rotor and blade schemes of Savonius turbine (a) front look, (b) looks like a semi-circle, (c) rotor axis experiment [24, 25].

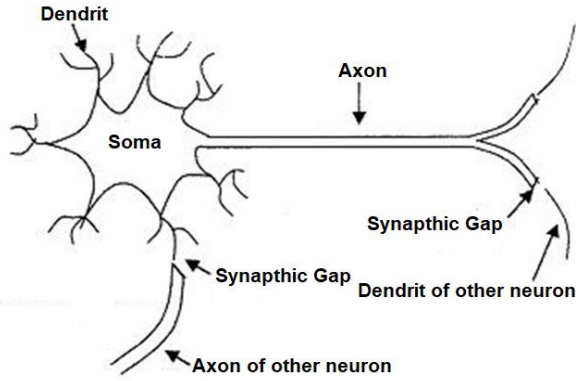
### 2.2 The ANN method

The ANN imitates a biological neural network made up of neurons. The development of the idea of a biological neural network is the existence of processing elements in an artificial neural network that are interconnected and operate in parallel. The main components of a neuron can be grouped into three parts, namely dendrites which are responsible for receiving information. Soma serves for a place of processing information. Axons transmit impulses to other nerve cells [26]. A neuron with dendrites and an axon can be seen in Figure 2.

A neuron is an information processing unit that is the basis for the operation of the ANN. Neurons consist of three constituent elements including a set of several units that are connected by connection pathways. First, the summing unit will add up the signal inputs that have

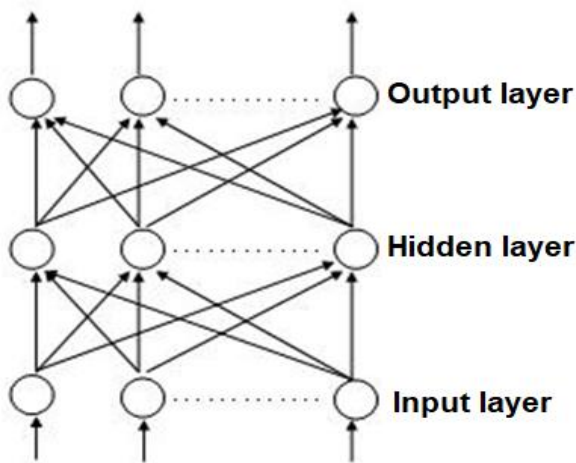


been multiplied by their weight. Second, the activation function will determine whether the signal from the input neuron will be forwarded to other neurons or not. Each neuron in the network receives and sends signals to and from other neurons. Signal transmission is conveyed through the connector. The strength of the relationship that occurs between each neuron is known as the weight [26].



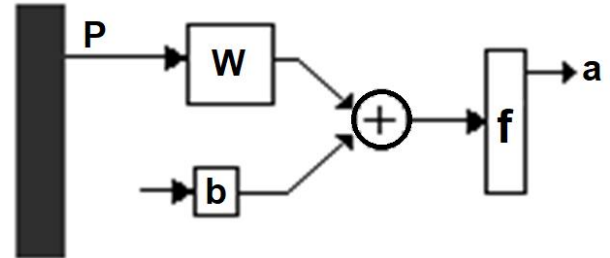
**Figure 2** Scheme of neuron, axon, and dendrite.

The ANN method is developed based on architecture and algorithms. The architecture usually describes the direction the signal travels in the network whereas the algorithm describes how the weights are governed. Both aim to direct input and output following the target of the learning rule. The changes in connection weight values can be done in various ways, depending on the type of training algorithm. By adjusting the value of this weight, network performance can be improved in learning various patterns expressed by input and output pairs [26]. The ANN model used in this study is the multi-layer network. Here, the ANN has the input and output units, accompanied by the hidden unit. In Figure 3 the multi-layer network consists of  $n$ ,  $h$ , and  $m$  of input, hidden, and output units, respectively [26,27].



**Figure 3** Scheme of multi-layers ANN.

The backpropagation algorithm is an ANN training method. The hallmark of this method is to minimize errors at the output which is produced from the learning process. The backpropagation algorithm that uses a multilayer network, not only has the input, hidden, and output, but also the bias [27]. The ANN architecture of the backpropagation algorithm can be seen in Figure 4.



**Figure 4** Architecture of ANN.

The optimization of the backpropagation method is affected by several parameters, i.e.: selection of initial weights, number of training patterns, number of hidden layers, learning rate, and iteration time (epoch). The backpropagation method tends to provide reasonable answers when compared with the target. The standard backpropagation method is a network weight differential gradient which is modified based on the equation [25,27]:

$$w_{ij}(n+1) = w_{ij}(n) + \eta \delta_i(n) x_i(n). \quad (6)$$

Where the weight of  $w_{ij}(n+1)$  from  $i$  to  $j$  in the order of  $(n+1)$  and  $w_{ij}(n)$  is similar in the  $n$ -order. The symbol  $\delta_i(n)$  is the local error which is evaluated at the  $e_i(n)$ - and  $n$ - orders. The local error is represented as

$$e_i = d_i(n) - y_i(n). \quad (7)$$

The special function used for the ANN training feed is the average number of squares of errors between the output network and the output target. In batch activation, the gradient corresponding to the momentum of the algorithm is used as a training function. Momentum is a gradient-forming algorithm obtained from the relationship

$$w_{ij}(n+1) = w_{ij}(n) + \eta \delta_i(n) x_i(n) + \alpha (w_{ij}(n) - w_{ij}(n-1)). \quad (8)$$

Here,  $\alpha$  is the momentum coefficient with the range values between 0.1 and 0.9. Neurons in ANN are also known as units. Each neuron consists of a switching function that expresses its internal level of activation. The output of the neuron is determined through input transformation using the appropriate transfer functions, namely: sigmoid function, tangent hyperbolic function, and linear function. The sigmoid function is most widely used for non-linear relationships. The general form of this function is shown in the equation:

$$y_i = f(x_j) = \frac{1}{1 + e^{-x_j}}. \quad (9)$$

Furthermore, the performance of the ANN was evaluated utilizing the root mean square error (RMSE). The relationship between the output model and the size of the data set is stated as

$$RMSE = \sqrt{\frac{\sum (X_{obs} - X_{est})^2}{N}} \quad (10)$$

Both  $x_{obs}$  and  $x_{est}$  are the results of model calculations and target estimates, respectively, while  $N$  is the amount of data in the testing process [25-27].

### 2.3 Algorithm of power ratio calculation

A backpropagation propagation algorithm in references [22-25] is developed to predict the power ratio of Rotors I – VI in Figure 1 (c). The data used to predict the power ratio value is the data of the previous power ratio value (the last two power ratio values) for each rotor. The following is an ANN algorithm with a backpropagation learning method:

(0) Input target:  $C_p$  (power ratio)

(1) Weight in the input layer:  $Z_{-in_j} = v_0 + \sum_{i=1}^n x_i v_{ij}$

(2) Activation function:

$$Z_j = f(Z_{-in_j}) = \frac{1}{1 + \exp(-Z_{-in_j})}$$

(3) Weight in the output layer:

$$Y_{-in_k} = w_{0k} + \sum_{j=1}^k z_j w_{jk}$$

(4) Output layer:  $Y_k = f(Y_{-in_k}) = \frac{1}{1 + \exp(-Y_{-in_k})}$

(5) In the input:  $C_p$  (power ratio)  $\approx$  output  $Y_k$  (point 5), the target is appropriate with the output, the learning process is finished, if NO, the procedure is continued to point (6)

(6) Compatibility between input and output target using:

$$\delta_k = (C_p - T_k) f'(Y_{-in_k})$$

$$\Delta w_{jk} = \alpha \delta_k z_j$$

$$\delta_j = \delta w_{jk} f'(Z_{-in_j})$$

$$\Delta v_{jk} = \alpha \delta_j z_k$$

(7) New weight for input layer:

$$w_{jk}^* = w_{jk} + \Delta w_{jk}$$

$$v_{jk}^* = v_{jk} + \Delta v_{jk}$$

(8) Back to the point (1) as a new target

From this procedure, an effective model for predicting the entire rotor is known based on the error value. The value is determined based on the output close to the target set for each rotor.

## 3. RESULT AND DISCUSSION

### 3.1 Backpropagation algorithm textng

The ANN architecture with the backpropagation algorithm used in this study consists of three layers, namely the input, hidden and output layers which can be seen in Figure 5. The training accuracy for the backpropagation algorithm is RMSE (root mean square error). The smaller the RMSE value, the better the model will be. In Figure 6, the smallest RMSE value can be seen at formation: 2,5,1 of input, hidden, output units, respectively. The result of this development and testing shows that the optimum values for momentum and learning rate are 0.90 and 0.01, respectively. The most optimal formation corresponds to the values and methods in references [23, 24].

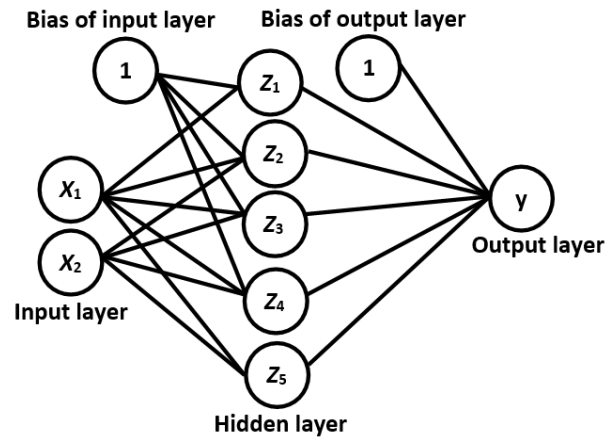


Figure 5 Architecture backpropagation algorithm.

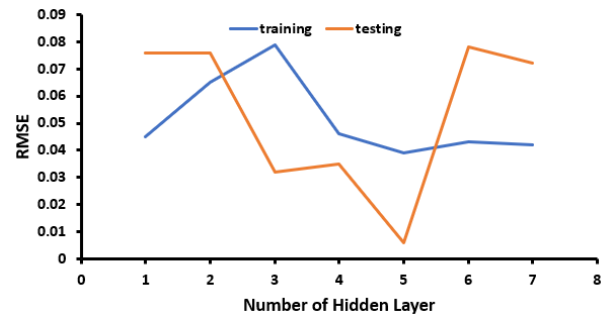
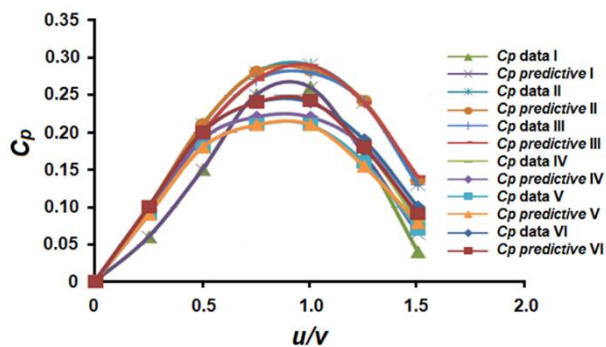


Figure 6 Comparison between the RMSE and number of hidden layers for both training and testing.

### 3.2 Power ratio prediction

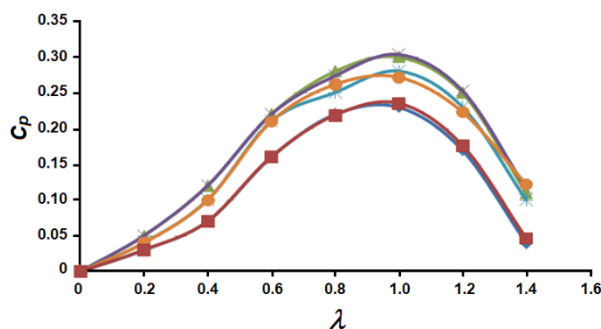
Figure 7 shows the power ratio characteristic based on the tip speed ratio. The values for the target (data) and prediction (predictive) are almost similar for all rotors. The power ratio values for the next three values are predicted from the previous values of the I – VI rotors. From the figure, the predictions process for the fifth, sixth, and seventh values based on the training

which are performed on the four previous values (two training patterns) are close to the target for all rotors. The results indicate that the pattern is almost similar to the prediction process of the power and torque performance with the ANN method has been successfully used for a three-bucket Savonius [23, 24]. The condition confirms that the prediction method to find the next power ratio value based on the previous power ratio value shows a small error and the output value is close to the target.



**Figure 7** Comparison of the power ratio between the target and predictive derived from the tip speed ratio for rotors I-IV.

Figure 8 is a form of testing the ANN method with the backpropagation algorithm in predicting the power ratio at different Reynolds numbers. The power ratio value used in the training process consists of four values (two data patterns) to predict the fifth, sixth, and seventh values (third, fourth and fifth patterns). This condition indicates that the target and output values have a very small difference. The type of gap tested in this procedure is rotor I with an RMSE value of about 0.65%. The same method has also been tried on the II-VI rotor with small error results and the output value is close to the target. These results show that the developed ANN in this study can minimize error after comparing with the methods in references [24, 25]. Therefore, the ways in developing and testing the ANN method with the backpropagation algorithm are recommended for several types of Savonius wind.



**Figure 8** The predictive power ratio based on various Reynold numbers in learning process.

## 4. CONCLUSION

The ANN method with a backpropagation algorithm has been applied to predict the power ratio of the Savonius turbine. The procedure started from testing the backpropagation algorithm and then continued by predicting the value of the power ratio to the six-rotor models. The training accuracy used in the backpropagation algorithm is RMSE. The most optimal RMSE value is obtained in conditions of 5 hidden, 2 input, and 1 output. Furthermore, the prediction of the power ratio value carried out in this study is to find the next power ratio value based on the previous power ratio value. The prediction results of the power ratio value show a small error and the output value is close to the target. These results show that the ANN method with the backpropagation algorithm can be used for various forms of the Savonius turbine blade model.

## AUTHORS' CONTRIBUTIONS

Both authors, J.A and B.B, have contributions about CONCEPT, METHOD, and ANALYSIS. The contribution in EDITING is J.A. Both authors (J.A and B.B) provided feedback, discussed result and contributed to the final manuscript.

## ACKNOWLEDGMENTS

We are grateful to the Department of Physics, Faculty of Mathematics and Natural Sciences, Universitas Jenderal Soedirman for the facilities support, on these independent theoretical and computational studies. We also thank the SICOMAS-2021 (Soedirman International Conference on Mathematics and Applied Sciences) committee for presenting this idea in the international forum.

## REFERENCES

- [1] Tumiwa, H. Imelda, The energy-poor: the facts in civil society. Institute for Essential Services Reform (IESR), 2011, pp. 70-85.
- [2] M. Fathi, A. Mehrabipour, A. Mahmoudi, A.A.S.B.M. Zin, M.A.M. Ramli, Optimum hybrid renewable energy systems suitable for remote area, Journal Smart Science, vol. 7, issue 2, 2019, pp. 147-159.
- [3] Z. Arthouros, Global status report. Paris: REN21 Secretariat, 2019, p. 336.
- [4] W. Beabpimai, T. Chitsomboon, Numerical study of effect of blade twist modifications on the aerodynamic performance of wind turbine, Int. Journal of Renewable Energy Development, vol 8, no. 3, 2019, pp. 285-292.



- [5] J. Aminuddin, R.F. Abdullatif, Wihantoro, A mapping of the potential area for developing wave power energy generation in Cilacap coast area and surroundings, *SIMETRI, Journal of Indonesian Physics Science*, vol. 2, no. 2, 2016, pp.68-73.
- [6] S.K. Singal, R.P. Saini, C.S. Raghuvanshi, Analysis for cost estimation of low head run-of-river small hydropower schemes”, *Energy for Sustainable Development*, vol. 14, issue 2, 2010, pp. 117–126.
- [7] A. Santoni, G. Cavazzini, G. Pavesi, G. Ardizzon, A. Rossetti, Techno-economical method for the capacity sizing of a small hydropower plant, *Energy Conversion and Management*, vol. 52, no. 7, 2011, pp. 2533-2541.
- [8] M. Berkun, Hydroelectric potential and environmental effects of multi-dam hydropower projects in Turkey, *Energy for Sustainable Development*, vol. 14, issue 4, 2010, pp. 320-329.
- [9] N. Sinaga, Flow analysis of wind turbine rotor with horizontal axis using computational approximation, *Exergy: Journal of Energy Technique*, vol. 13, no. 3, 2017, pp: 84-91.
- [10] J. Aminuddin, A. Widiyani, P. Razi, A. N. Aziz, R. F. Abdullatif, A. Arifin, Estimation of ideal configuration and dimension of pico hydropower using Euler-Lagrange equation and Runge-Kutta method. *Int. Journal of Physics: Conference Series*, vol. 1494, no. 1, 2020, p. 012039. DOI:10.1088/1742-6596/1494/1/012039.
- [11] J. Aminuddin, M. Effendi, Nurhayati, A. Widiyani, P. Razi, Wihantoro, A.N. Aziz, R.F. Abdullatif, Sunardi, Bilalodin, A. Arifian, Numerical analysis of energy converter for wave energy power generation-pendulum system, *Int. J. of Renewable Energy Development*, vol. 9, no. 2, 2020. pp.255-261. DOI:10.14710/ijred.9.2.255-261.
- [12] R.K. Singh, M.R. Ahmed, Blade design and performance testing of a small wind turbine rotor for low wind speed applications, *Renewable Energy*, vol. 50, 2013, pp 812-819.
- [13] R.H. Barnes, E. V. Morozov, K. Shankar, Improved Methodology for Design of Low Wind Speed Specific Wind Turbine Blades, *Composite Structure*, vol. 119, 2015, pp 677-684.
- [14] H. Erich, *Wind turbines: fundamentals, technologies, application, economics*, 2<sup>nd</sup> Edition, Springer, Germany, 2005.
- [15] E.N. Jacobs, A. Sherman, Airfoil section characteristics as affected by variations of the Reynolds number, Report No. 586, National Advisory Committee for Aeronautics, 2009.
- [16] S. Mathew, C.M. Lim, M. I., Petra, G. S. Philip, M. Noorfathin, M.S. Mathew, V. Raj, Matching the characteristics of low wind speed turbines with candidate wind regimes, *Energy Procedia*, vol. 95, 2016, pp 286-293.
- [17] A. Ramadan, K. Yousef, M. Said, M.H. Mohamed, Shape optimization and experimental validation of a drag vertical axis wind turbine, *Energy*, vol 15, no. 151, 2018, pp. 839-853.
- [18] K.H. Wong, W.T. Chong, N.L. Sukiman, S.C. Poh, Y.C. Shiah, C.T. Wang, Performance enhancements on vertical axis wind turbines using flow augmentation systems: *a review*, *Renewable and Sustainable Energy Reviews*, vol. 73, 2017, pp.904-921.
- [19] M. Zemamou, M. Aggour, A. Toumi, Review of Savonius wind turbine design and performance, *Energy Procedia*, vol. 141, 2017, pp. 383-388.
- [20] W. Tian, Z. Mao, B. Zhang, Y. Li Y, Shape optimization of a Savonius wind rotor with different convex and concave sides, *Renewable Energy.*, vol. 117, 2018, pp. 287-299.
- [21] N. Alom, U.K. Saha. Influence of blade profiles on Savonius rotor performance: *numerical simulation and experimental validation*. *Energy conversion and management*, vol. 186, 2019, pp. 267-277.
- [22] J. Sargolzaei, A. Kianifar, Modeling and simulation of wind turbine Savonius rotors using artificial neural networks for estimation of the power ratio and torque, *Simulation Modelling Practice and Theory*, vol. 17, no. 7, 2009, pp. 1290-1298. DOI: 10.1016/j.simpat.2009.05.003.
- [23] B.K. Debnath, R. Das, Prediction of performance coefficients of a three-bucket Savonius rotor using artificial neural network, *Journal of Renewable and Sustainable Energy*, vol. 2, no. 4, 2010, p. 043107.
- [24] M. Al-Ghriybah, H. Çamur, M.F. Zulkafli, M.A. Khan, Y. Kassem, E. Esenel, Study of multiple half blades effect on the performance of Savonius rotor: *experimental study and artificial neural network (ANN) model*. *Indian Journal of Science and Technology*, vol. 11, no. 38, 2018, pp. 1-2. DOI: 10.17485/ijst/2018/v11i38/129966
- [25] Y. Kassem, H. Gökçekuş, H. Çamur, Artificial neural networks for predicting the electrical power of a new configuration of Savonius rotor, *International Conference on Theory and Application of Soft Computing, Computing with*

Words and Perceptions, Springer, Cham, 2019, pp. 872-879.

- [26] M. Buscema, Back propagation neural networks: *substance use and misuse*, Taylor and Francis, vol. 33 no. 2, 1998, pp.233-270.
- [27] S.P. Siregar, A. Wanto, Analysis of artificial neural network accuracy using backpropagation algorithm in predicting process (forecasting). Int. J. of Information System and Technology, vol. 1, no. 1, 2017, pp.34-42.