



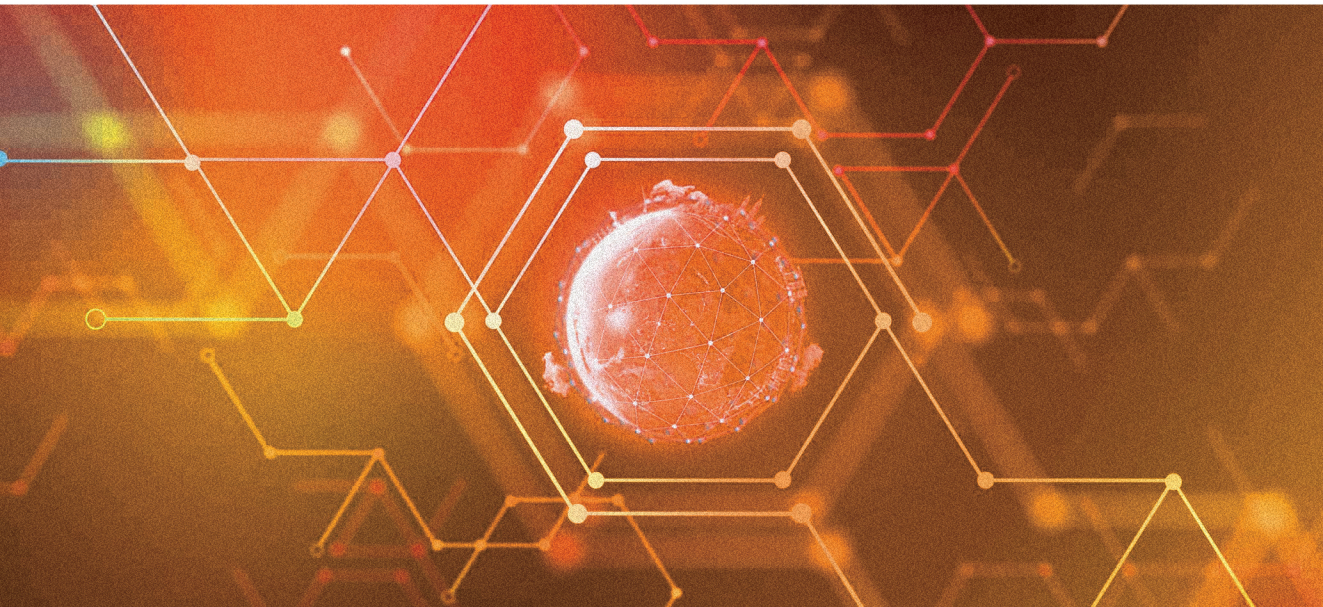
E-PROCEEDING

ICFSSH 2020

The 1st International Conference on Political, Social & Humanities Sciences

NAVIGATING GLOBAL SOCIETY *in the Disruptive Era*

November, 25th-26th, 2020



Editor:

Dr. Slamet Rosyadi (Universitas Jenderal Soedirman)

Prof. Dr. Rozasman Hussin (Universiti Malaysia Sabah)

Assoc. Prof. Dr. Thanawat Pimoljinda (Burapha University)

©UNSOED PRESS

ISBN: 978-623-6783-36-8

ISBN: 978-623-6783-37-5 (PDF)

This book is published by UNSOED Press, Purwokerto, Central Java, Indonesia.

All rights reserved. No part of this book may be reproduced, translated, and stored in any form or any means, including photocopying, recording or otherwise, without prior permission from Faculty of Social and Political Sciences, Universitas Jenderal Soedirman and the publisher.

The First International Conference on Political, Social and Humanities Sciences (ICPSH 2020)

Navigating Global Society in the Disruptive Era

November 25th-26th, 2020, Purwokerto, Central Java, Indonesia

Editors:

Dr. Slamet Rosyadi
Universitas Jenderal Soedirman, Indonesia

Prof. Dr. Rozasman Hussin
Universiti Malaysia Sabah, Malaysia

Assoc. Prof. Dr. Thanawat Primoljinda
Burapha University, Thailand

Hosted by:

Faculty of Social and Political Sciences, Universitas Jenderal Soedirman, Indonesia

Conference Committee

General Chair:

Jarot Santoso (Dr.), Dean of Faculty of
Social and Political Sciences, Universitas
Jenderal Soedirman, Indonesia

Organizing Chair:

Arif Darmawan (M.Si.), Faculty of Social
and Political Sciences, Universitas
Jenderal Soedirman, Indonesia

Steering Chairs:

Lutfi Makhasin (Ph.D.), Vice Dean
in Academic and Planning Affairs,
Universitas Jenderal Soedirman,
Wahyuningrat (Dr.), Vice Dean in Financial
Affair, Tri Wuryaningsih (Dr.), Vice Dean
in Student and Alumni Affairs, Faculty of
Social and Political Sciences, Universitas
Jenderal Soedirman, Indonesia

Secretary:

Muhammad Yamin (M.Si.), Faculty of
Social and Political Sciences, Universitas
Jenderal Soedirman, Indonesia

Treasurer:

Oktafiani Catur (M.Si.), Faculty of Social
and Political Sciences, Universitas
Jenderal Soedirman, Indonesia

Organizing Committee:

Wiwik Novianti (Dr.), Sri Wijayanti (M.Si.),
Ayusia Sabhita Kusuma (M.Soc.Sc.), Agus
Haryanto (Dr.), Tundjung Linggarwati
(M.Si.), Nuryeni Kartika Bintarsari (MA.),
Slamet Rosyadi (Dr.), Bowo Sugiarto
(M.Si.), Renni Miryanti (M.Si.), Faculty of
Social and Political Sciences, Universitas
Jenderal Soedirman, Indonesia

Reviewer Committee:

Arief Bakhtiar Darmawan (MA.),
Nurul Azizah Zaysda (MA.), Dwiyanto
Indiahono (Dr.), Hendri Restuadhi (MA.),
Muslihuddin (Dr.), Shinta Prastyanti (Dr.),
Nuryanti (Dr.), Andi Ali Said Akbar (MA.),
Ahmad Sabiq (MA.), Faculty of Social and
Political Sciences, Universitas Jenderal
Soedirman

Reviewer Committee Chair:

Sulyana Dadan (Dr.), Faculty of Social and
Political Sciences, Universitas Jenderal
Soedirman, Indonesia

Published by



UNIVERSITAS JENDERAL SOEDIRMAN PRESS

Gd. UNSOED Press

Jalan Prof. Dr. H.R. Boenyamin 708 Purwokerto

Kodepos 53122 Kotak Pos 115

Telepon (0281) 626070

Email: unsoedpress@unsoed.ac.id

Number of Page:

Xiv + 508 pages

Foreword

Navigating Global Society in the Disruptive Era is the main theme of the first International Conference on Political, Social and Humanities Sciences (ICPSH). This theme is adopted since we live in an age of transformation in which strong global forces change the way we live and function. The rise of new emerging economies such as China, India, and other countries in the global south; the rapid proliferation of digital technologies; the rising challenges of globalization; and the global pandemic; all that issues above have impacted global society. Simultaneously, the resurfacing of old international rivalries, the breaking of conventional alignments, and the emergence of new powers are changing the international structure of the 21st century, if not the methodology and analytical methods used by scholars to understand it.

Although power politics is shifting, non-traditional challenges are also on the rise: seemingly never-ending wars in Africa and the Middle East, global migration, environmental problems, and the possibility of transnational terrorism are unavoidable factors that must be taken into account in any possible future scenario. Industrial Revolution 4.0 has had transformative impacts on all lines of society, and the global society must be prepared to face up to new developments that are evolving to the core. Such and other global developments bring substantial new opportunities to global society, nations, industries, businesses, and individuals that have successfully adopted them— but the risk for those who can not keep up has also risen dramatically.

In responding strategic issues relevant to the main theme, the conference has three main topics to be discussed: First, the conference discusses the challenge of current global transformations towards global society, states, market, international engagement, and foreign relations. With the advent of a disruptive era, there is a change in the system of interaction between state actors and non-state actors in the global stage. Second, it discusses the impacts and effects of the disruptive era on international relations and diplomacy at large. Third, it discusses the response of local society, local government, and public administration to the challenge and opportunities brought by the new transformation.

This proceedings explores and develops the central theme from a range of perspectives and backgrounds, school of thought, and interdisciplinary fields of intellectual discourses. Papers in this proceeding are based on theoretical or

observational case studies from any country and area of the world. Some of the problems addressed include the following subtopics: Global Society and emerging technologies, International Relations & Foreign Policy in the Disruptive Era, Peace, human right and security in the era of digital technology, Global health, environmental issues, and global disaster management, Politics, governance, and democracy in the disruptive era, New challenge and opportunity for social movement and global justice, People mobility and international migration, Political communication and new media in the era of Industry 4.0, Challenge to public administration in the disruptive era, Building a resilient society in the disruptive era, New transformation in the global economy, A challenge to the sustainable development goals in the disruptive era, and A challenge and opportunities for education and culture in the era of Industry 4.0. The first ICPSH was trully international perspective and thought.

Report From Organizing Committee

Assalamualaikum Warohmatullohi Wabarokatuh,

On behalf of the organizing committee, it gives me an immense pleasure to welcome all participants and presenters to the 1st International Conference on Political, Social and Humanities Sciences (ICPSH) that will be held on 25th – 26th November 2020 in Universitas Jenderal Soedirman, with the main theme is “Navigating Global Society in Disruptive Era”.

It is my pleasure to welcome all the eminent and honorable speakers, Prof Christian Reus-Smit from University of Queensland, Australia; Prof Mohtar Mas’oed from Universitas Gadjah Mada, Prof Miriam Estrada-Castillo from Universidad Casa Grande, Ecuador, Prof Zhang Zhenjiang from Jinan University, China and Luthfi Makhasin, Ph.D from Universitas Jenderal Soedirman. It’s an honor for us that you can join our conference, and able to share your knowledge and vast experience with the scholars and students in Indonesia, especially in Universitas Jenderal Soedirman.

This event is the first virtual conference in the history of our faculty which is completely conducted on a digital platform in line with the social distancing norms due to COVID-19 pandemic, and organized by Faculty of Social and Political Sciences, Universitas Jenderal Soedirman. I believe that this conference will provide excellent opportunity to discuss and learn about recent issues and research related with the main theme of the conference.

As a chairperson of organizing committee, I would like to end this welcome with a round of thanks for everyone who has made ICPSH 2020 possible. I would like to start by thanking my fellow members of the Organizing Committee, fellow colleagues in the Faculty, and administration staff that made what initially seemed like the daunting task of organizing a major international conference appear simple.

I would specially like to extend our gratitude to our University and Faculty management; Rector of Universitas Jenderal Soedirman, Dean of Faculty of Social & Political Sciences, and all head of departments in this Faculty for support this conference. Also for all presenters and participants that willing to join and share their thoughts and research.

Thank you. *Wassalamualaikum Warohmarullahi Wabarokatuh*

Arif Darmawan

ICPSH 2020 Conference Chair

Welcoming Remark from Dean of Faculty of Social and Political Sciences

Assalamualaikum Warohmatullohi Wabarokatuh,

On Behalf of the Faculty of Social and Political Sciences, Jenderal Soedirman University, I would like to say Welcome or “Selamat Datang “ to the Faculty of Social and Political Sciences, Jenderal Soedirman University. It is a true pleasure for me to welcome you all to the first “International Conference on Political, Social & Humanities Sciences” or ICPSH 2020.

The Faculty of Social and Political Sciences, Jenderal Soedirman University or FISIP UNSOED, was founded on May 17, 1984. Currently, the Faculty of Social and Political Sciences, Jenderal Soedirman University, has five departments for undergraduate programs, namely Sociology, Public Administration, Communication Studies, Political Science and International Relations. The Faculty of Social and Political Sciences also has three master’s programs; they are Masters in Public Administration, Masters in Sociology, and Masters in Communication Sciences.

Following the university’s vision, which is “recognized by the world as a center for developing rural resources and local wisdom,” the curriculum currently implemented and developed is directed towards achieving that vision. To achieve this vision, the Faculty of Social and Political Sciences also continues to improve adequate infrastructure and facilities in accordance with the National Higher Education Standards and is preparing to become a world-class campus through cooperation with foreign partners.

Since its establishment in 1984, the Faculty of Social and Political Sciences has produced graduates with excellent character and has contributed professionally in many government and private institutions, both on a national and international level in the social and political fields. We continue to be committed to creating graduates who have analytical and innovative abilities, offering out of the box solutions, thinking critically, and having emotional intelligence. With these abilities, graduates of the Faculty of Social and Political Sciences are expected to be able to answer the challenges of today’s globalization and develop a curriculum based on local wisdom.

To improve the quality and academic atmosphere in the faculty of social and political science, we hold an international conference this year with the theme “Navigating Global Society in the Disruptive Era.”

On behalf of the social and political sciences faculty, I would like to thank all speakers, committee members, presenters, and participants who have participated in the first “International Conference on Political, Social & Humanities Sciences 2020.” We hope that similar academic activities will be held again in the coming years with various topics in the field of social and political sciences.

Wassalamualaikum Warohmarullahi Wabarokatuh

Dr. Jarot Santoso, MS
Dean of Faculty of Social and Political Sciences
Universitas Jenderal Soedirman

Welcoming Remark from Rector of Universitas Jenderal Soedirman

The honorable,

- Dean of the Faculty of Social and Political Sciences, Jenderal Soedirman University
- Keynote Speakers,
 - Prof. Mochtar Mas'ood (Gadjah Mada University)
 - Luthfi Makhasin, Ph.D. (Jenderal Soedirman University)
 - Prof. Miriam Estrada-Castillo (Universidad Casa Grande)
 - Prof. Zhenjiang Zhang (Jinan University)
- Participants
- Distinguished guests, ladies, and gentlemen

Assalamualaikum warrahmatullahi wabarakatuh

Best wishes to all of us

On behalf of Universitas Jenderal Soedirman, I would like to welcome all of the keynote speakers, invited speakers and all participants who attend the The 1st “International Conference on Political, Social & Humanities Sciences” (ICPSH 2020) organized by the Faculty of Social and Political Sciences, Universitas Jenderal Soedirman.

Now we are facing a new disruption era that occurred pushed by the Industrial Revolution 4.0. The world community will begin to recognize that a human-centered society and technology will change the way humans live, work and communicate, which is called Society 5.0.

The concept of a human-centered and technology-based society brings enormous changes in the education system, health services, commerce, government systems, and every aspect of life.

This era requires disruptive regulation, disruptive culture, disruptive mindset, and disruptive marketing that revolutionizes the old lifestyle. Disruption is continuous innovation. Then, the question is, what about our education model, which will later be disruptive to replace the entire old learning system with new ways.

The academic community's task is to provide solutions in organizing life and its harmony with other humans to achieve society's welfare. Therefore, this conference will bridge the scientific role and become an interdisciplinary dialectical study of

social, political, and humanities. We hope that ideas, plans, and actions will emerge in this forum to overcome problems in this disruptive era.

Therefore, we appreciate the Faculty of Social and Political Sciences, Universitas Jenderal Soedirman, for this beneficial program. I expect this conference to produce useful outputs.

Last but not least, I congratulate all delegates on participating in this online international conference.

With the name of Allah swt **“Bismillahirrahman nirrahim”**, The 1st “International Conference on Political, Social & Humanities Sciences 2020” officially open.

Wassalamualaikum Warrahmatullah Wabarakatuh

Prof. Dr. Ir. Suwanto, M.S
Rector

Contents

Foreword.....	v	A Semiotic Analysis Of Counterpain Advertisement: The “Jatuh Dan Bangkit Lagi” Version.....	60
Report From Organizing Committee ..	vii	<i>Cindenia Puspasari, Dini Rizki2and Ian Aulia</i>	
Welcoming Remark from Dean of Faculty of Social and Political Sciences	viii	The Impact of One Belt One Road (OBOR) for Asia Pacific Countries	69
Welcoming Remark from Rector of Universitas Jenderal Soedirman	x	<i>Colifaturansa, Dede Muhammad, M. Calakdo Islami, Shaqilla Vianta Azzana, Indra Jaya Wiranata</i>	
Communication Patterns and Cultural Adaptation of foreign students at Universitas Prima Indonesia	1	Indonesia’s Digital Society: Challenges and Prospects	77
<i>Christin Agustina Purba. Reza Pahlevi Ginting,</i>		<i>Dian Herdiana</i>	
Potential Threats of Transnational Crimes in The Indonesia-Malaysia Border Area	9	Ethics of Bureaucracy in Social Media Between Freedom of Expression and Impartiality	86
<i>Rizki Tegar Sembada, Dudy Heryadi.....</i>	9	<i>Dwiyanto Indiahono, and Anwaruddin</i>	
Forest And Land Fire Reporting In South Sumatra: From Local To National Media Frames.....	16	Indonesian Youth’s: Envisaging Indonesian Youth’s Perspectives Towards the Prospect of Free Sex in Indonesia.....	93
<i>Krisna Murti, Farisha Sestri Musdalifah, Rindang Senja Andarini</i>		<i>Febriana Aminatul Khusna, Sekar Lathifatul Aliyah, Ikrar Genidal Riadil</i>	
Haul Habib Ali Al-Habsyi in Solo The Emergence of A New Tradition Amidst The Thick of Javanese Traditions.....	24	The Driving Factor Analysis of Same-Sex Marriage Legalization in Taiwan 2017- 2019.....	108
<i>Endang Tri Irianingsih, Wakit Abdullah, Warto, and Sri Kusumo Habsari</i>		<i>Gita Amalia Pravitasari</i>	
The International Committee of the Red Cross’s (ICRC) Role in the Protection of Syrian Children in 2015-2018.....	34	Arranging Justice with the Right to Politics in the Electoral Court.....	120
<i>Ahmad Zufar and Sri Wijayanti</i>		<i>Ilham Kurniawan Ardi, Resa Yuniarsa Hasan, Heru Susetyo</i>	
The Role of Social Networks in Utilizing Plastic Waste into Paving Blocks at “UD. Wong Cilik ”Jetis Village, Kemangkon, Purbalingga	43	Switzerland, best practice of the use of human rights in environmental policy. 137	
<i>Alifan Nurin Anamti Dieningrum, Muslihudin Muslihudin, Edy Suyanto</i>		<i>Indra Jaya Wiranata, Khairunnisa Simbolon, Mirah Satria Alamsyah, Ridha Amalia</i>	
Prospect of Military Public Diplomacy by Indonesian Army in United Nations Peacekeeping Operation	51	Sindumartani Residents’ Resistance Against Sand Mining at Kali Gendol	152
<i>Angga Nurdin Rachmat</i>		<i>Khairul Syafuddin</i>	

Indonesia's Counter-Violence Extremism Policy Against ISIS Propaganda in Social Media.....	169	<i>Sulyana Dadan, Rawuh Edy Priyono and Endang Dwi Sulistyoningasih</i>
<i>Mario Surya Ramadhan</i>		
The 2018 Pyeongchang Olympic as an Opportunity for Reunification in The Korean Peninsula.....	181	Competitive Strategy of Small Micro Businesses Industry Cluster in the Middle of Pandemic COVID-19
<i>Nafarani Guswanti and Tundjung Linggarwati</i>		258
		<i>Titi Darmi, Nuryakin, Bella Dian Nusantara</i>
The Impact of Korea's New Southern Policy on The Political Economy Cooperation Between Indonesia and South Korea	189	The Changing Landscape of Terrorism in The United States After 9/11: The Transnational Network of White Supremacist Extremist Movement
<i>Novi Kartika Nurlaili and Tundjung Linggarwati</i>		268
		<i>Nuriyeni Kartika Bintarsari, Arif Darmawan</i>
Indonesia and IORA: Middle Power Strategy in the Disruptive Era.....	197	Village Budgeting in Banyumas District ..
<i>Raden Ajeng Rizka Fiani Prabaningtyas and Hayati Nufus</i>		274
		<i>Simin, Denok Kurniasih, Darmanto Sahat Setiawan, Ngelimun, Mahmud Setiahadi, Rukna Idanati, Moh. Imron, Sedy Noviko, Dwiyanto Indiahono, and Shadu Satwika Wijaya</i>
Xi Jinping's Effort to Improve China's Identity Through Chinese Dream Concept	209	Global Cybersecurity Measure in International Security
<i>Reza Desfarika Putri, Muhammad Yamin</i>		283
		<i>Bimo Satryo Wibowo</i>
Migrant Workers' Economic and Social Remittance's Impact on their Entrepreneurship.....	219	The Importance of Digital Literacy in Minimizing the Impact of Hoax during the Covid-19 Pandemic in Sleman, Yogyakarta .
<i>Sri Wijayanti, Nurul Azizah Zayzda, Agus Haryanto, Tundjung Linggarwati, Arif Darmawan, Muhammad Yamin</i>		296
		<i>Felicciana Yayi Amanova, Niken Puspitasari</i>
Contemplating IR's Future out of the Ruins.....	228	Gendis : Change the Stigma of Pity into Independence of People with Disabilities.
<i>Stanislas Kostka Jesias Leks Tabori, Arif Darmawan</i>		303
		<i>Nabilla Poetri Andini, Deska Pradani Putri, and Nurwahyu Primadarma, and Alizar Isna</i>
The Black Sea Economic Cooperation Organization (BSEC) in Maintaining Economic Stability of East Europe (2015-2018)	239	In Defending ASEAN's Talk Shops: Navigating International Society in Indo-Pacific.....
<i>Suci Indah Lestari, Pyngkan Daola B. , Febrina Septiana Putri, Deswan Firlian, Indra Jaya Wiranata</i>		317
		<i>Pandu Prayoga</i>
Social Adaptions of Bonokeling Community Toward Modernity	248	Problems in Humanitarian Colaboration? (The Case Study of the Collaboration between RUDENIM UNHCR and IOM in Balikpapan Indonesia)
		324
		<i>Mohamad Dzigie Aulia Al Farauqi, Khoirul Amin, Annisa Kirana Andaneswari</i>

The Need of Intertional Regime Support to Combat Fisheries Crime.....	341	Self Presentation of MSM on Hornet, an Online Dating App	427
<i>Randhi Satria, Obsatar Sinaga, Arry Bainus, Wawan Budi Darmawan</i>		<i>Valerius Rex Alibazah, Wiwik Novianti and Mite Setiansah</i>	
Is Lock-Down the Best Policy? COVID-19 Economic Measures in ASEAN Countries and Lesson Learned for Indonesia	359	Political Islam: What Are the Characteristics and Agenda?	436
<i>Achmad Kautsar, Silvia Dian Anggraeni, Naeli Fitria, Fikri Brilianti, Grace Wulandari, Qori'atul Septiavin</i>		<i>Warjio & Heri Kusmanto</i>	
Local Government Policy Against Bentor Operation Routes.....	369	Domestic Violence as the Impact of Early Marriage.....	444
<i>Bonny Datty, Frets Alfret Goraph</i>		<i>Zelda Shaellia Wijaya</i>	
Indonesia's Response on Facing China in A Dispute Over Exclusive Economic Zone in Natuna Islands	380	Community-Based Waste Management: Environmental Law Perspective.....	451
<i>Diah Ayu Intan Sari</i>		<i>Kadar Pamuji, Abdul Aziz Nasihuddin, Slamet Rosyadi</i>	
Indonesia's Digital Society: Challenges and Prospects	389	From National Resilience to Regional Resilience the Acquisition of Regional normative Power in Indonesia	461
<i>Dian Herdiana</i>		<i>Pu Pengfei</i>	
Food security in COVID-19: India's tremendous pressure and its impact in South Asia.....	398	Think Globally, Act Locally: Village Response to Covid-19 in Indonesia	477
<i>Hemastia Kirana, Tia Kharisma Asnasari, Salsabila, Indra Jaya Wiranata, Deyna Yulian Putri</i>		<i>Ardian Prabowo, M. R. Khairul Muluk, Ainul Hayat</i>	
Collaborative Governance in Administering Public Services at the Public Service Mall of Bekasi City.....	406	The Securitization of Global Health Issue: The WHO's Failure in Pandemic Mitigation of COVID-19.....	490
<i>Irma Alviana, Fitria Zahrotun, Rima Rahmawati Putri, Solahuddin Kusumanegara</i>		<i>Sukma Sushanti, Putu Titah Kawitri Resen, Gusti Ngurah Gede Agung Pradipta</i>	
The Role of Women's Leadership in Institutions of the Indigenous People ..	419	Communications Pattern of Government Natuna Againts Pandemic	500
<i>Rita Rahmawati, BerrySastrawan</i>		<i>Ade Putranto Prasetyo Wijiharto Tunggal, Komarudin</i>	

Community-Based Waste Management: Environmental Law Perspective

Kadar Pamuji¹, Abdul Aziz Nasihuddin¹, Slamet Rosyadi²

¹Department of Public Administration Law, Faculty of Law, Universitas Jenderal Soedirman,
Central Java, Indonesia

²Department of Public Administration, Universitas Jenderal Soedirman, Central Java, Indonesia
kadar.pamuji@unsoed.ac.id, ziz_lingk@yahoo.com, slamet.rosyadi@unsoed.ac.id

Abstract

The purpose of this study is to analyze the community-based waste management in implementing the community participation as regulated in Law No. 8/2008 on Waste Management. To obtain deeper understanding on the community based-waste management, the legal and qualitative approaches were conducted in this study. The result showed that the waste management regulation has encouraged the waste management practices involving communities. However, the waste bank was found as a model involving communities in the processes of sorting, selecting, and appreciating. Thus, public participation in waste management was higher found in this waste bank model. This study has contributed in providing more extensive understanding on the community based-waste management practices.

Keywords: *community-based waste management; environmental law; waste bank.*

1 INTRODUCTION

Community-based waste management has been mandated by Law No. 18/2008 on Waste Management. Article 28 paragraph 1 mentions that the communities can participate in waste management held by the government and/or regional government. The role of communities has become an essential element to assist the government in waste management. It is impossible that the

government is able to handle all waste problems although the government has been supported by their officials and budgets. Thus, community-based waste management has become a new paradigm in waste management.

Along with the continuously increasing population, the waste production also increases each day. The Ministry of Environment and Forestry has reported that the national waste volume has reached 175,000 tons per

day or 64 million tons per year. This figure was obtained with the assumption that each person has produced 0.7 kg waste per day (*Bisnis Indonesia*, 2019). Although the waste volume in Indonesia is not as much as that in Singapore (3.72 kg per capita per day) and the global average (0.74 kg per capita per day), waste management should be well improved to anticipate from the environmental crisis and various diseases (liputan6, 2020).

In the environmental law perspective, the quality of environment, natural resource and ecological sustainability should be well managed by the state in controlling the interaction between humans and their environments which have the potential to result in the negative impact on the environment. However, in reality, the environmental regulations implemented by the government institutions were not able to completely answer the environmental problems. The alternative was that the strengths of communities or non-government institutions come to answer the inefficiency of the traditional regulations of law, such as the ineffectiveness of hierarchical government controls, rigid environmental rules, and legal sanction implementation (Holley & Lawson, 2015).

In its development, the community-based waste management practices in Indonesia cannot be separated

from the increasing community awareness not to depend on the role of government in waste management. The research conducted by Setiadi (2015) in Yogyakarta reported that the community-based waste management in the city showed high community awareness to the waste problems and they were able to gather collective actions for the mutual purposes.

However, the studies discussing the community-based waste management in rural areas have not obtained serious attentions. In fact, the spirit of togetherness of the village communities is much stronger than that of the city residents. Thus, this study aims at analyzing the community-based waste management in implementing the role of village communities as regulated in Law No. 8/2008 on Waste Management.

2 LITERATURE REVIEW

The national organization of natural resource management has just been made in the recent decades. In the natural resource utilization, the related components are not only the natural ones but others, such as production factors covering capital, workforce, and management strategies, including processing, market and transportation availability. The environmental pollutions or damages recently happen everywhere with a relatively fast speed. The environmental problems have

recently become the major attention of various parties since environment is the source of humans' needs to continue their lives. If this continuously happens, the quality of environment will continuously decrease (Ariman, 2010).

In the international society, the prevention against the environmental decrease has been implemented in the 1992 Rio declaration to implement *sustainable developments*. This principle may only improve the economic development without causing the environmental damages or pollutions (Soemarwoto, 2009). As mentioned in the provisions of Article 1 Number (32) of Law No. 32 Year 2009 on Environmental Protection and Management as follows: Each person is an individual or either corporated and incorporated business entity. For mineral or mining businesses, the government can implement it by themselves, and/or appoints contractors, if needed, to implement the jobs which have not or never been implemented by the government institutions themselves.

Environment is a unity of room with all things, powers, conditions, and living things, including humans and their attitudes which influence the nature itself, life sustainability, and the prosperity of humans and other living creatures (Siahaan, 2008).

Based on the provisions contained in Article 1 Number (2) of Law No. 32

Year 2009 stating that the environmental protection and management are a systematic and integrated effort to preserve the environmental functions and to prevent from environmental pollutions and/or damages covering planning, utilization, control, maintenance, supervision and law enforcement.

According to Siti Sundari Rangkuti quoted from Yuliandri (2010), law is the underlying base to implement all policies issued by the government known as "*Legal Policy*" implemented in law to become the social engineering vehicle containing wisdom to be achieved by the government directing the society to accept the new values (Yuliandri, 2010). One of government's efforts to realize the good environmental management is by enforcing law through supervision and implementation as well as the imposition of sanctions both administrative, civil, and criminal sanctions to an individual or entity breaking the provisions of environmental law.

The Indonesian government has issued the regulations of law, namely Law No. 32 Year 2009 on Environmental Protection and Management (known as *UUPPLH*) and the implemented the sustainable development where in its consideration mentioning that the environmental management should be held based on the principles of government responsibility,

sustainability, and benefits aiming at realizing the sustainable development with the environmental insights for the sake of the development of all Indonesia communities who are faithful and pious to the Almighty God (Manan, 2009). In the context of waste problems, Law No.18 Year 2008 on Waste Management is intended to support the waste management using the comprehensive approach through the cooperation between community, government, and other *stakeholders*. The purpose is to enable the society obtain the benefits on health, economy, well maintained environment and community behavioral changes to be more aware of the environmental problems.

One new paradigm in waste management is the community-based waste management. According to Asteria and Haruman (2016), the community-based waste management emphasizes on the active participation of communities as the important actors in waste management actions. The communities, in this case, have the role in providing education to the members related to the development of new waste management strategies, such as selecting, sorting, and appreciating the waste. Through the community-based waste management, the people's capability in recycling the waste to become more creative products has also developed (Firmansyah *et al.*, 2016). Thus, the waste in the future will

be no longer taken as the residue, yet can be processed into more beneficial products and have the economic values.

The community-based waste management is one waste management approach based on the communities' needs and demands, planned, implemented (if possible), controlled and evaluated together with the society. It can be said based on communities if: (i) the decision is entirely made by the communities; (ii) the operational responsibility and maintenance are based on the communities' agreements. When simplified, the community-based waste management is a system of waste management which is planned, arranged, operated, managed and owned by the community. Thus, the main role in waste management is the community. The government and other institutions are as the motivators and facilitators (Wahyono, 2013).

3 METHOD

This research used two approaches: legal and qualitative approach. First, the legal approach used was the *statute approach* and *conceptual approach*. Second, qualitative research approach was used to reveal the social-cultural meanings and experiences of the research subjects on community-based household waste management.

The research location in Kutasari Village, Baturraden District, Banyumas

Regency. The research location was purposively selected by considering that Kutasari Village has been developing the community-based household waste management pattern. The informants were purposively selected from the village government elements and waste management communities. In depth interview was conducted to answer the questions related to (i) how the regulation on waste management encourages the communities' active participations in waste management and (ii) how the community-based household waste management was practiced. The data were then analyzed using an interactive model, that is, the data analysis process starting from data collection, data reduction, data condensation and drawing conclusion. The data were analyzed in each step that the obtained data were adequately feasible to draw the research conclusion.

4 RESULT AND DISCUSSION

4.1 Environmental Law Analysis

To overcome the more complex waste problems, Banyumas Regency government has arranged the Regional Regulation No. 6 Year 2012 on Waste Management. The Article 31 paragraph 1 mentions that the communities have the role in waste management held by the regional government. The community participation in waste management is

regulated in Article 31 paragraph 2 in the form: a. giving opinions, consideration, and/or recommendation to the regional government in waste management activities; b. Giving recommendations and opinions in the formulation of household and other household-like waste management policies and strategies; c. Implementation of household and other household-like waste management activities independently or in partnership performed with the Regional Government; and/or d. the provision of education and training, campaign, and mentoring provided by the community groups to the community members in waste management to change the community members' behaviors.

To operate the regional regulations, the Banyumas Regent has issued the Regent Regulation No. 54 Year 2018 on General Guidance of the Duty Assistance in Household and other Household-like Waste Management to the villages in the areas of Banyumas regency. In this Regent Regulation, the Village government based on the administrative regional authorities is given the duties to:

- a. implement the household waste and other household-like waste reduction and management;
- b. create the independent community groups;
- c. determine the *TPS3R* locations;

- d. coordinate with the Waste Management Working Unit in the Regional areas;
- e. allocate funds in *APBDes* [Village Income and Expenditure Budget].

The implementation of Regency Government Policies on Waste has been translated by the Kutasari Village Government in the form of Village Regulation. The policy made is the Village Regulation No. 4 Year 2016 on Environmental Cleanliness. In general, the village government policy regulating the Household Waste Management covers two important things:

1. Coordination mechanism between stakeholders with Waste Management;
2. Stakeholders' Rights and obligations including the Rights and Obligations of Village Government and Village Government's Commitment related to the waste management policies in the village.

However, those village government policies have not completely regulated each waste-related activity in Kutasari Village. The Kutasari Village government has given rooms for the village communities to perform the household waste management practices. This is positively responded by some Kutasari village residents by making the household waste management models into three forms: Waste Management coordinated by the Neighborhood Association

(known as *RT/Rukun Tetangga*, Waste Management coordinated by the Independent Community Groups (known as *KMS/kelompok swadaya*), and “*Inyong*” Waste Bank (known as *BSI/Bank Sampah Inyong*). Those three waste management models are one of success indicators to the regulations related to the waste management. Thus, the waste management regulations have encouraged the village government and communities to develop the waste management practices involving the community participations.

Normative juridical analysis found that regulation in the context of research has encouraged the enforcement of environmental laws at the community level. These findings support the study conducted by Candrakirana (2015) which also highlights the important role of laws in encouraging the government to institutionalize good environmental governance and environmental awareness at the community level.

4.2 Community-Based Waste Management Practices

One community-based waste management model found in Kutasari Village was *Inyong* Waste Bank (known as *BSI/Bank Sampah Inyong*). Although there were other household waste management patterns, such as Waste Management coordinated by the Neighborhood Association (known as

RT/Rukun Tetangga) and Independent Community Groups (known as *KMS/keompok swadaya*), the methods of selecting, sorting, appreciating to the waste tend to be more practiced by the *Inyong* Waste Bank.

The waste management in Kutasari Village has uniquely developed. The awareness on waste management has been related to the economic values. Waste management practices coordinated by the Neighborhood Association (known as *RT/Rukun Warga*) have seen the waste as products which have the economic values. Waste management in the level of Neighborhood Association (known as *RT/Rukun Warga*) has utilized the waste taking services in the household level to obtain incomes, such as retribution. The communities are provided with various benefits due to the availability of waste taking services although they have to pay those services. Meanwhile, for the waste managers, they have also earned their incomes from the waste selling results. However, waste selecting and sorting practices have not been well implemented in the waste management model made by the Neighborhood Association (known as *RT/Rukun Tetangga*).

Similarly, waste management coordinated by the Independent Community Groups (known as *KMS/keompok swadaya*), the already-taken waste from the surrounding residents was

selected in the final waste disposal sites. The communities in cooperation with the Independent Community Groups (known as *KMS/keompok swadaya*) are not required to select and sort the waste. Thus, the waste management practiced by the Independent Community Groups (known as *KMS/keompok swadaya*) has not reflected the community-based waste management model as expected.

Dissimilar with the waste management model coordinated by the Neighborhood Association (known as *RT/Rukun Tetangga*) and the Independent Community Groups (known as *KMS/keompok swadaya*), the “*Inyong*” Waste Bank (known as *BSI/Bank Sampah Inyong*) has provided education related to waste management to its customers. The surrounding residents who have become the customers of “*Inyong*” Waste Bank (known as *BSI/Bank Sampah Inyong*) have been trained to select and sort the waste since produced in the household level. At the beginning, it was not easy to give the waste management education to the surrounding residents. However, the community awareness was the created after some educational processes and active participations of the waste managers (*BSI/Bank Sampah Inyong*) in educating the surrounding residents as their customers.

The “*Inyong*” Waste Bank (known as *BSI/Bank Sampah Inyong*) was formed

and coordinated with the motivation to overcome the environmental inconveniences due to the unmanaged accumulated-produced waste. To draw people's attention to participate in and become the costumers of the “*Inyong*” Waste Bank (known as *BSI/Bank Sampah Inyong*), the managers provide incentives in the form of waste saving program and exchange their waste with their daily basic needs (known as *sembako*). This program encourages the surrounding residents to sort their waste based on organic and non-organic waste. The Organic waste has been processed into compost. Special for the non-organic waste, The “*Inyong*” Waste Bank (known as *BSI/Bank Sampah Inyong*) has highly appreciated the waste saving received from the surrounding residents. Although the economic values of the non-organic waste are not high, this strategy is relatively effective to motivate the surrounding residents not to easily throw their waste away. The perception mentioning that waste still has its price is once formed and implanted in the costumers' mind; the household waste production can be then well managed.

At the beginning, the “*Inyong*” Waste Bank's (known as *BSI/Bank Sampah Inyong*) service range was only provided for the Residents of Neighborhood Association (*known as RT/Rukun Teteangga*). However, due to the discontinuation of waste disposal

sites at the hamlet level in response to the implementation of the waste-selection based regional government policies, the “*Inyong*” Waste Bank's (known as *BSI/Bank Sampah Inyong*) services were developed to the hamlet level. These services were given to improve the community awareness on waste. With more extensive service areas, the “*Inyong*” Waste Bank (known as *BSI/Bank Sampah Inyong*) has become one community-based waste management model in the village areas of Banyumas Regency.

The findings of this study corroborate previous studies which reported that waste banks are a more effective model of waste management in encouraging wider community participation (Astheria, & Heruman, 2016; Setiadi, 2015). Waste banks do not only provide added value economically, but also educate the public to care about protecting the surrounding environment.

5 CONCLUSION

This study has eventually drawn the following conclusions:

1. From the environmental law perspective, the community-based waste management has been strengthened with the regulation in the central, regency, and village government levels. The regulation on waste management regulates the interaction between communities

with their environments without resulting in the negative impacts of waste to the environmental health and convenience. The research results show that the regulation on waste management has encouraged the waste management practices in the community levels.

2. This qualitative research indicated that public participation in waste management was found in the waste bank model in which the communities were educated to select, sort, and appreciate the waste. The waste bank model has also provided positive impacts on the environmental health and convenience including the increase of community income earned from their waste saving results. Thus, the waste bank model is one ideal model to improve the community-based waste management practices.

ACKNOWLEDGEMENT

The authors thanks to Universitas Jenderal Soedirman that facilitated this research funding.

References

- Ariman, M.R. (2010). *Fungsi Hukum Pidana terhadap Perbuatan Pencemaran Lingkungan Hidup*, Ghalia Indonesia, Jakarta.
- Asteria, D., & Heruman, H. (2016). Bank Sampah sebagai alternatif strategi pengelolaan sampah berbasis masyarakat di Tasikmalaya (Bank Sampah (Waste Banks) as an Alternative of Community-Based Waste Management Strategy in Tasikmalaya). *Jurnal Manusia dan Lingkungan*, 23(1), 136-141. doi:<http://dx.doi.org/10.22146/jml.18783>*/ doi:<https://doi.org/10.22146/jml.18783>
- Bisnis Indonesia. (2019). Timbulan sampah nasional capai 64 juta ton per tahun. Retrieved from <https://ekonomi.bisnis.com/read/20190221/99/891611/timbulan-sampah-nasional-capai-64-juta-ton-per-tahun>
- Candrakirana, R. (2015) Penegakan hukum lingkungan dalam bidang pengelolaan sampah sebagai perwujudan prinsip *good environmental governance* di Kota Surakarta. *Yustisia*. Vol. 4 No. 3 , 581-601.
- Firmansyah, A., W.N.A., & Mubarakah, U. (2016). Inovasi pengelolaan sampah berbasis masyarakat (Innovation of Garbage Management Based on Community) . *Prosiding Seminar Nasional Hasil-Hasil PPM IPB*, 184–197
- Holley, C., & Lawson, A. (2015). Implementing Environmental Law

- and Collaborative Governance: Water and Natural Resource Management (2015). in Paul Martin and Amanda Kennedy (eds) Implementing Environmental Law (Edward Elgar, 2015), Available at SSRN: <https://ssrn.com/abstract=3163018>
- Liputan6. (2020). Bloomberg: Singapura penghasil sampah terbanyak per kapita di dunia. Retrieved from <https://www.liputan6.com/global/read/4278074/bloomberg-singapura-penghasil-sampah-terbanyak-per-kapita-di-dunia>
- Manan, A. (2009). *Aspek-Aspek Pengubah Hukum*, Kencana Prenadamedia Group, Jakarta.
- Setiadi, A (2015). Studi Pengelolaan Sampah Berbasis Komunitas pada Kawasan Permukiman Perkotaan di Yogyakarta. *Jurnal Wilayah Dan Lingkungan*, Volume 3 Nomor 1, 27-38.
- Siahaan, N.H.T. (2008). *Hukum Lingkungan*, Cetakan kedua, Edisi Revisi, Jakarta, Pancuran Alam, 2008, hlm 4
- Soemarwoto, O. (200). *Ekologi, Lingkungan Hidup dan Pembangunan*, Cetakan 6. Djambatan, Jakarta.
- Yuliandri. (2010). *Asas-asas Pembentukan Peraturan Perundang-undangan Yang Baik*, PT. Raja Grafindo Persada, Jakarta.
- Wahyono,S. (2013). Jurnal Teknologi Lingkungan, Vol. 13, No. 1.

This conference will explore and develop the central theme and will discuss subtopics in a range of perspectives and intellectual discourse. Some of the issues addressed include in the following subtopics:

- International Relations, Security & Foreign Policy in the Disruptive Era
- Human Rights, Peace Studies and Conflict Resolution
- Gender, feminism and International Relations
- New transformation in the global economy
- People mobility, international migration, and diaspora
- Social Movement, Global Justice, and Building Resilient Society in the disruptive era
- Challenges and opportunities of Communication in the disruptive era
- Challenges to Public Administration in the disruptive era
- Multiculturalism and minority rights in a disruptive era
- Politics of development & varieties of welfare regimes
- Populism and democratic backsliding
- Religious resurgence, communal identities, and radicalism
- Health care rights and citizenship in a time of the pandemic



UNIVERSITAS JENDERAL SOEDIRMAN
Gd. UNSOED Press
Jalan Prof. Dr. H.R. Boenyamin 708 Purwokerto
Kodepos 53122 Kotak Pos 115
Telepon (0281) 626070
Email: unsoedpress@unsoed.ac.id

ISBN 978-623-6783-37-5 (PDF)

