

-

- [Biogenesis: Jurnal Ilmiah Biolog](#)

[fitranto1971](#)**Submission Title:**

Purwoceng (Pimpinella pruatjan Molk.) nanosuspension repairs spatial white albino wistar strains' spatial memory degeneration after sleep deprivation

Author(s)Rangga Wisnu Wardana, Tuti Sri Suhesti, Fitranto Arjadi

- [Submission](#)

Submission Files

Name

[Settings75246-1 isna, Biogenesis_Fitranto 2022.docx](#)

[Settings75247-1 Dokumentasi Kegiatan](#)

[Settings75248-1 Data Penelitian](#)

[Settings75249-1 Uji Statistik](#)

- [Download All Files](#)

Pre-Review Discussions**Reviewer's Attachments**

Purwoceng (Pimpinella pruatjan Molk.) nanosuspension repairs spatial white albino wistar strains' spatial memory degeneration after sleep deprivation

Author(s)Rangga Wisnu Wardana, Tuti Sri Suhesti, Fitranto Arjadi

- [Review](#)

- [Round 1](#)

- [\[bio\] Editor Decision](#)2022-04-14 06:12 AM

Participants [Edit](#)

- Cut Muthiadin (cutmuthiadin)
- St Aisyah Sijid (staisyah)
- Fitranto Arjadi (fitranto1971)

Messages

Dear Authors:

Fitranto Arjadi, Rangga Wisnu Wardana, Tuti Sri Suhesti.

We have reached a decision regarding your submission to Biogenesis: Jurnal Ilmiah Biologi, "Purwoceng nanosuspension repairs spatial white albino wistar strains' spatial memory degeneration after sleep deprivation".

Our decision is to: Kindly follow the editor suggestion. And resubmit the revision in one week (January 21, 2022).

Editorial team,

Biogenesis: Jurnal Ilmiah Biologi

SINTA 2

Universitas Islam Negeri Alauddin Makassar, Indonesia.

Biogenesis: Jurnal Ilmiah Biologi

<http://journal.uin-alauddin.ac.id/index.php/biogenesis>

Reviewer's Attachments

- [Search](#)

Name

75265-1 [Article Text, 26488-75246-1-SM.docx](#)

75736-1 [Article Text, 26488-75250-2-RV.docx](#)

Revisions

[Settings](#)⁷⁶⁶⁷¹⁻¹ [Article Text, 26488-75265-1-RV rev 30012022.docx](#)

Review Discussions

- [Add discussion](#)

Name	From	La
Settings Editor Decision	fitranto1971	-
	2022-01-14 12:19 AM	

Purwoceng nanosuspension repairs spatial white albino wistar strains' spatial memory degeneration after sleep deprivation

ABSTRACT. *Paradoxical Sleep Deprivation* (PSD) induces oxidative stress and interferes permanent memory consolidation in hippocampus. Purwoceng (*Pimpinella prutjan Molken*) is herbal medicine with antioxidant effect. These effects will be more effective with nanosuspension technology. The research purposes is to find effect of PSD to rats' spatial memory reduction and to find purwoceng nanosuspension extract effect to improve rats' spatial memory after PSD stress induction. The research method is randomized controlled trial with posttest only with control group approach to 36 white male albino rats Wistar strain which is induced by 96 hours PSD stress model. Experiment groups is regular extract 25 mg/300g BW/day, purwoceng nanosuspension extract 25 mg/300 gBW/day, 50 mg/300 gBW/day, and 75 mg/300 gBW/day. Statistical analysis found that there is no significant effect of purwoceng extract to memory traveling time ($p=0.414$) and memory track length ($p=0.316$) between pre-PSD and post-PSD group. There is significant effect of PSD stress after purwoceng administration to memory track length and memory travelling time ($p=0,005$). The conclusion is that there is significant correlation between the difference of memory latency and memory traveling time of MWM test between the various purwoceng nanoemulsion dose. The 25-50 mg/300 gBW/day is effective dose of purwoceng nanoemulsion extract to repairs spatial memory degeneration after PSD stress.

Keywords: nanoemulsion; paradoxical sleep deprivation; purwoceng; spatial memory; sleep deprivation

INTRODUCTION

Sleep deprivation (SD) or lack of sleep can disrupt circadian rhythm and physiology mechanism of body (Ma *et al.* 2019). It induces oxidative stress which damages temporary and permanent memory consolidation as we find in Alzheimer, Parkinson, and another brain degenerative disease (Wu *et al.* 2019). Characteristics of these diseases are reduction of quality and quantity of post synapses neuron and hippocampus cell (Havekes, 2017). Paradoxical sleep deprivation elevates glucose metabolism up to 30 % until there is excess of free radicals, disrupt sleep-and-wake cycle, leads to antioxidant imbalance, oxidative stress in hippocampus and the other central nervous system part (Owens *et al.* 2016). Sleep deprivation intensifies corticosterone level, induces CA3 neuron atrophy and reduces arborization (dendrite branching) in hippocampus. Those effect generates spatial memory problem and anxiety behavior to experimental animals (Konankanchi, 2020).

Kindly explain some previous studies using *Pimpinella* sp. as an antioxidant plant in one paragraph

Indonesian unique herbal medicine (2019), Purwoceng (*Pimpinella pruatjan Molkenb*) has antioxidant effect because of phenol and bioflavonoid content). Nanosuspension technology makes coloid paricel can be dispersed into submicron size less than 1 μm , with mean sizes is 200 - 600 nm (Prabhakar & Krishna, 2011). The technology has been expected to increase absorption, bioavailability, onset, peak level and penetration compared with regular extract. Bioflavonoid as exogen antioxidant can escalate antioxidant body level and reduces ROS free radicals as product of oxidative stress. This research purposes is to find sleep deprivation effect to spatial memory ability and antioxidant ability of purwoceng nanosuspension.

Stated the research novelty and the future impact here in one paragraph

MATERIALS AND METHODS

This is experimental, randomized controlled trial with posttest only, control group design research. The subjects are 36 white male albino rats Wistar strain, divided into 6 groups: Goup A: PSD with sleep recovery; group B: PSD without sleep recovery; group C: PSD and Purwoceng extract 25 mg/300 gBW/day, group D: PSD + purwoceng nanosuspension extract 25 mg/300 gBW/day, group E: 50 mg/300 gBW/day; group F: 75 mg/300 gBW/day. The chosen dose is based on recent research by Pribadi, (2012) and Taufiqurrachman & Wibowo (2006). Their research doses are 25 mg/mL/day

for 300-gram body weight or 83,25 mg/kgBW. Nanoemulsion extract dose is 25 mg/3 mL by single dose 3 mL nanoemulsion solution given by oral tube.

The purwoceng has been obtained from Batur village, Dieng plateau, Banjarnegara. Plant determination has been done in plant taxonomy laboratory of Biology Faculty, Universitas Jenderal Soedirman, Purwokerto. Nanoemulsion process has been done in Pharmacy Laboratory of Pharmacy Faculty, Jenderal Soedirman University, Purwokerto. Purwoceng nanoemulsion extract has been made by mixing purwoceng ethanol extract with Tween 80, stirred with magnetic stirrer 500 rpm for 15 minutes, added by PEG 400 and Virgin coconut oil, and then stirred for 15 minutes. The solution is added by a few aquadest slowly, and then stirred by magnetic stirrer 1000 rpm for 15 minutes, and then sonicated in 25 – 40 °C temperature for 30 minutes. The nanoemulsion phytochemicals are being screened to measure alkaloid and flavonoid components, followed by nanoemulsion characteristics test, such as organoleptic, transmittance percentage (%T), particle size, and particle size distribution and also Zeta Potential.

Paradoxical Sleep Deprivation. Experimental animals were being placed in stainless steel cage filled with water. It has 24x26x29 cm dimension, two platform with 6 cm diameter. The foothold has muscle atonia shock device which which automatically turns on every 10 minutes to give a shock effect for 1 second that causes a wake-up effect. This treatment is carried out for 96 hours with a break between 07.00 – 11.00 WIB (Arjadi et al. 2021).

Morris Water Maze (MWM) test. Assessment of the spatial memory ability of rats using the MWM test in a pool with a diameter of 180 cm and a height of 76 cm divided into 4 parts, one of which is given a footing (on the shallow bottom of the water, not on the surface of the water) to stand and stand on. The water filled with the pond consists of water and coconut milk/milk, which is useful for clouding the water, so the rats are judged to find a foothold based on memory. The test takes 7 days, namely the first 5 days the experimental animals are swam 4 times a day within 60 seconds, until they find a foothold (acquisition trial / acquisition test phase). On the 6th day, the stepping platform was taken and the experimental animals were allowed to swim to find a foothold according to what was remembered (probe trial/probe phase) and recorded the results of the trial probe as initial data for the memory test of the experimental mice and on the 7th day a spatial ability test/sensorineural MWM test/examination trial phase was conducted.

The treatment was documented by video camera and observed the spatial latency time ability test the spatial memory capabilities of the rats by counting the time recorded from the time it were entered into the pond until it were on a platform. The spatial ability test was tested for the length of the test track to assess memory capabilities. We get spatial data of the rats by measuring the area and distance of the path traveled in finding a foothold, and the results of the comparison of the distance measured in the actual pond diameter with the diameter of the pond in the video, multiplied by the distance in the video. The data is presented in tabular and graphical form, where the X-axis represents the day session from the acquisition trial to the 7th day of testing and the Y-axis represents latency time (in seconds) or track length (in cm) (Buccafusco, 2009)

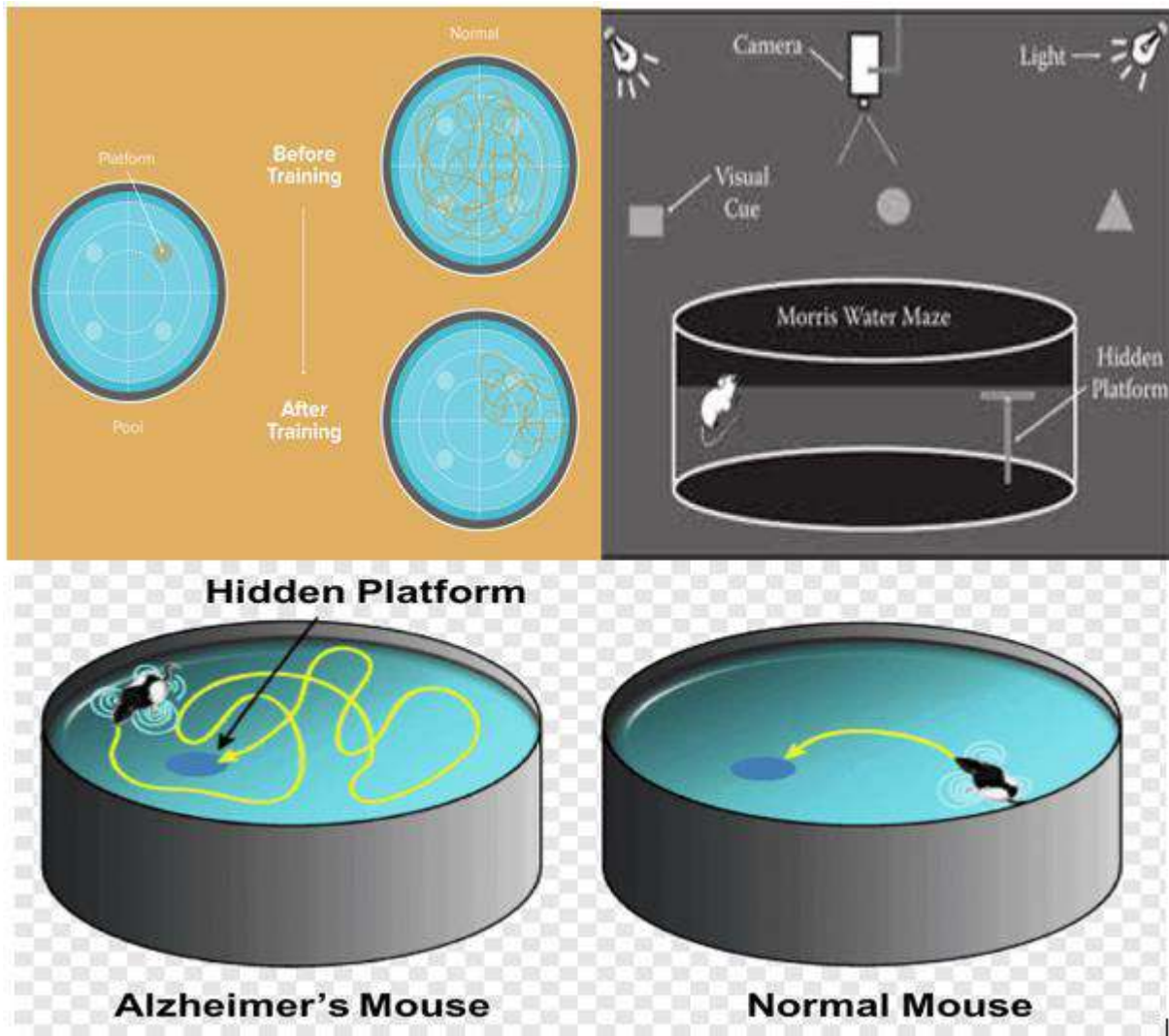


Fig. 1. Test of spatial memory ability of experimental animals (A. Morris Water Maze pool B. Acquisition test phase C. Test results between normal and impaired memory)

This figure should be replaced with the high resolution one. Specially the black white picture.

Upload the picture one by one in this document, do not put the picture together

The MWM test was carried out at the end of each treatment phase as reference data for indicators of spatial memory ability and became the basis for the analysis of the data used. The degree of degeneration of spatial memory abilities is determined by the longer the path length and the longer the latency time required to reach the target. Tests a few days before the sensorineural test (acquisition phase and probe phase) were carried out as a means of practice and trials to increase the frequency of target recognition by footing. The data displayed in the pre-PSD, post-PSD, and post-Purwoceng phases are descriptive data to see the pattern of spatial memory development per experimental rat in the MWM pool and analyzed to get a conclusion. Research ethics were obtained from the Health Research Ethics Commission, Faculty of Medicine, Jenderal Soedirman University, Number 097/KEPK/V/2021 dated 10 May 2021.

Data Analysis. The research data was tested for the normality of the data distribution using the Shapiro-Wilk and homogeneity test and data variance using Levene's Test. If the data transformation is normal and heterogeneous, it is analyzed using One Way of Variance (ANOVA) as a parametric test and if it is not normal, it is tested with Kruskal Wallis. The test was continued with the Tukey Post-Hoc test to determine whether there was a significant difference between the control group and the treatment group with a significance level of $p < 0.05$.

RESULTS AND DISCUSSION

The transmittance test showed that the size of the clarity and purity of the nanoemulsion formed was 84.5% and although it did not reach 100%, it was sufficient as a marker of the validity of the nanoemulsion solution structurally. The particle size distribution test of the Purwoceng nanoemulsion solution was found to be 123.87 ± 28.9 nm which indicates that the particle size distribution is ideal because it is in the range of 20-200 nm, so that the stability and

distribution of molecules in the dissolution medium is optimal. The results of the polydispersity index of the Purwoceng nanoemulsion solution obtained the number 0.37 ± 0.11 which indicates that the intermediate disparity is between homogeneous and heterogeneous. The results of the zeta potential of the Purwoceng nanoemulsion solution were found to be -16.56 ± 1.19 mV, which indicated good molecular stability of the nanoemulsion solution from particle attraction aggregation, because it was in the range of -30 to 30 mV. The results of the phytochemical screening test showed that the Purwoceng extraction solution was reactive in the alkaloid and flavonoid testing which indicated that the extraction solution was positive for qualitatively qualitative alkaloids and flavonoids.

Table 1. Comparison of observation results of mwm of latency time test data.

Groups	Latency time (seconds)		
	Pre-PSD	Post-PSD	After Purwoceng Treatment
A (PSD Non Sleep)	20.25	42.25	-
B (PSD + Sleep)	5.25	9.25	-
C (PSD + 25 mg extract)	13	21.25	46
D (PSD + 25 mg nanoemulsion)	15	39.25	27.25
E (PSD + 50 mg nanoemulsion)	7.5	12.5	12.5
F (PSD + 75 mg nanoemulsion)	11	7	12.25

Table 2. Data comparison of observation results long path of mwm examination trial per phase between groups of experimental wistar rats.

Groups	Track length (cm)		
	Pre-PSD	Post-PSD	After Purwoceng Treatment
A (PSD Non Sleep)	562.5	900.25	-
B (PSD + Sleep)	112	205	-
C (PSD + 25 mg extract)	255	511.25	1013.25
D (PSD + 25 mg nanoemulsion)	321.5	837	487.5
E (PSD + 50 mg nanoemulsion)	180	271.75	190.75
F (PSD + 75 mg nanoemulsion)	197.5	167	2715

Based on the figures in Tables 1 and 2, it can be seen that there is a decreasing trend of spatial memory ability between the average rats after PSD treatment but statistically there is no significant difference between PSD to the decrease in spatial memory ability in rats and sleep recovery does not provide a difference to spatial memory ability. The paired t-test between pre-PSD and post-PSD in group A showed travel time $p = 0.168 > 0.05$ and path length $p = 0.145 > 0.05$ and Wilcoxon test in group B obtained travel time $p = 0.180 > 0.05$ and path length $p = 0.068 > 0.05$. These results differ from the findings of several studies on memory disorders.

Recent research (Khadrawy, Nour & Aboul Ezz 2011) stated that 72 hours of PSD treatment through reduced catalase activity and glutathione levels, inhibition of Na/K ATPase in the hippocampus and cerebral cortex, increased acetylcholinesterase and lipid peroxidation which resulted in the induction of oxidative stress and increased brain excitability can reduce memory performance and increase anxiety levels in rats. Recent research by Kamphuis *et al.*, (2017) states that the disruptive consequences of degeneration of the prefrontal cortex in experimental rats treated with sleep disturbances for 7 days caused degeneration of the prefrontal cortex with symptoms of slower motor responses and impulsive reflexes. Increased anxiety in post-PSD rats resulted in increased brain excitability and overactivity of motor behavior that made the rat's instincts move faster which increased the length of the trajectory in the sensorineural MWM test.

Atrooz *et al.* (2019) stated that prolonged sleep disturbances increase the incidence of forgetting and cause memory fragmentation such as short and medium-term memory loss due to weakened associative pathways characterized by a decrease in the number of pyramidal and dendritic cells in the CA1 hippocampus area, the main area of memory pathway transmission. According to Wu *et al.* (2019), the pathophysiological mechanism of memory degeneration due to sleep disturbances is related to glymphatic-vascular-lymphatic clearance in brain macromolecular structures, increased oxidative stress in the brain and decreased levels of melatonin in blood circulation.

Hunter's research (2019) states that there is no evidence of a detrimental effect of REM sleep disturbances on the performance of experimental mice in the acquisition phase of the MWM test, both during retention and reversal and REM is only useful in helping improve learning performance and general memory. Research by Karabulut *et al.* (2019) states that the post-MWM sleep phase, especially during REM sleep, plays a very important role in modulating the consolidation and rapid repair of cells that play a role in memory which can improve the transcription of mRNA genes from pyramidal cells and lead to hippocampal neuroplasticity.

The explanation for the absence of a significant difference between PSD and the role of sleep recovery on spatial memory abilities in this study is still unknown but it is suspected that adequate sleep compensation after PSD and before the MWM acquisition phase to sensorineural testing. The short sleep compensation was able to provide a better consolidation effect on brain and hippocampal performance so that it could reduce the effect of decreasing spatial memory ability which is expected to exist in the rat group. Sleep compensation in PSD was more accommodating than when it was replaced with total sleep deprivation (TSD) treatment where mice were not allowed to sleep at all for several days. According to Tufik et al. (2009), adequate compensation from regular sleep-wake cycles can improve neurophysiological and behavioral changes significantly despite having experienced sleep disturbances, indicating that there is no significant difference in spatial memory ability between the groups of rats with sleep recovery and without sleep recovery because all groups received sleep compensation even with different duration.

Based on statistical tests, there was no significant difference between the administration of Purwoceng on spatial memory abilities in rats based on the length of the track and the latency time. The administration of purwoceng non-nanosuspension and nanosuspension extraction at a dose of 25 mg, 50 mg, or 75 mg did not give a significant difference in spatial memory ability. Data analysis using Paired t-test group C (non-nanoemulsion Purwoceng extract) showed travel time $p = 0.271 (> 0.05)$ and path length $p = 0.224 (>0.05)$, group D (Purwoceng nanoemulsion 25 mg/gBW) obtained travel time $p = 0.21 > 0.05$ and path length $p = 0.249 (>0.05)$, Wilcoxon test in group E (Purwoceng nanoemulsion 50 mg/gBW) obtained travel time $p = 0.465 (>0.05)$ and path length $p = 0.465 (>0.05)$, and group F (Purwoceng nanoemulsion 75 mg/gBW) obtained travel time $p = 0.651 (>0.05)$ and path length $p = 0.647 (>0.05)$. Bivariate analysis testing the spatial memory ability of rats after administration of Purwaceng through the One-Way ANOVA test showed a significant relationship between travel time ($p = 0.000 < 0.05$) and track length ($p = 0.001 < 0.05$) in groups C, D, E, and C. and F. The post hoc test showed that the lowest travel time was group D, followed by groups F and E, while the highest travel time was found in group C and in the section on track length, the lowest track length was group E, but not much different with groups D and F.

The explanation of the absence of significant differences between Purwoceng on post-PSD spatial memory ability is not certainly known. It is suspected that the active flavonoid substances in Purwaceng are able to reduce the level of cell aging and the level of tissue inflammation but cannot provide instantaneous improvement in the quality of spatial memory. Flavonoids can modulate neuronal signaling pathways that are important in memory processing, synaptic plasticity, and long-term potentiation mechanisms as the basis for the formation of a memory (Rendeiro et al., 2009) and improve cognitive memory through activation of kinases in the MAPK and P13 kinase pathways and accelerate the process of regulation of the cAMP response element-binding protein (CREB) which is important in the memory storage process in the hippocampus and cerebral cortex (Krishnaveni, 2012), Nanoparticle preparation technology by emulsification was proven to produce significant pharmacological effects which was indicated by the difference in the level of decline in spatial memory ability at different doses of Purwoceng and non-nanoemulsion extract Purwoceng had a higher rate of degeneration of spatial memory ability compared to the group that received Purwoceng nanoemulsion.

CONCLUSION

There was no effect between the decrease in spatial memory ability and the number of pyramidal cells and hippocampal volume in albino male wistar rats treated with PSD. There was no significant effect of giving Purwoceng nanoemulsion on improving spatial memory ability of albino male wistar rats treated with PSD. There is a significant effect on the difference in latency and path length of the MWM test between doses of Purwoceng nanoemulsion. The dose of 25 - 50 mg is the effective dose of the Purwoceng nanoemulsion which results in a shorter path length and latency time indicating an improvement in post-PSD spatial memory degeneration.

ACKNOWLEDGEMENT

The author would like to thank to Head of Research and Community Service, Jenderal Sudirman University, Head of the Department of Anatomy, Faculty of Medicine, Jenderal Soedirman University, Dzicky Rifqi Fuady as proofreader and other parties have assisted in the research.

REFERENCES

- Arjadi F, Gumilas NSA, Harini IM, Indriani V, Rujito L. 2021. The Hepatotoxic and Nephrotoxic Effects of Purwoceng (Pimpinella Pruatjan Mol.) Roots Ethanol Extract Administration in Subchronic Dose. *Molekul*.vol 16 (2): 163–69. doi:<https://doi.org/10.20884/1.jm.2021.16.2.729>.
- Arjadi F, Kurniawan DW, Wibowo Y, Siswandari W, Rujito L. 2019. "No Acute Toxicity Tests of Purwoceng (Pimpinella Pruatjan Mol.)

- Ethanol Extract on Male Albino Rat by Determined Hepatorenal Function Test and Histopathology.” *Molekul*. vol 14 (2): 117–25. doi:https://doi.org/10.20884/1.jm.2019.14.2.542.
- Fatin A, Liu H, Kochi C, Salim S. 2019. “Early Life Sleep Deprivation: Role of Oxido-Inflammatory Processes.” *Neuroscience* 406: 22–37. doi:https://doi.org/10.1016/j.neuroscience.2019.02.021.
- Buccafusco, Jerry J. 2009. “Methods of Behaviour Analysis in Neuroscience. CEC Press, Second Edition.
- Hunter AS . 2019. “Short-Term REM Deprivation Does Not Affect Acquisition or Reversal of a Spatial Learning Task.” *Behavioural Processes* 169 (December). doi:https://doi.org/10.1016/j.beproc.2019.103985.
- Jeanine K, Baichel S, Lancel M, de Boer SF, Koolhaas JM, Meerlo P. 2017. “Sleep Restriction in Rats Leads to Changes in Operant Behaviour Indicative of Reduced Prefrontal Cortex Function.” *Journal of Sleep Research* 26 (1): 5–13. doi:https://doi.org/10.1111/jsr.12455.
- Sebahattin K, Bayramov KK, Bayramov R, Ozdemir F, Topaloglu T, Ergen E, Yazgan K, Taskiran AS, Golgeli A. 2019. “Effects of Post-Learning REM Sleep Deprivation on Hippocampal Plasticity-Related Genes and MicroRNA in Mice.” *Behavioural Brain Research* 361 (April): 7–13. doi:https://doi.org/10.1016/j.bbr.2018.12.045.
- Pribadi WA, . 2012. Efektivitas Ekstrak Etanol Purwoceng (*Pimpinella Alpina*) terhadap Pertambahan Bobot Badan Tikus Betina Bunting pada Umur Kebuntingan 0 - 13 Hari. Skripsi. Fakultas Kedokteran Hewan, Institut Pertanian Bogor, Indonesia.
- Khadrawy, Yasser A., Neveen A. Nour, and Heba S. Aboul Ezz. 2011. “Effect of Oxidative Stress Induced by Paradoxical Sleep Deprivation on the Activities of Na⁺, K⁺ ATPase and Acetylcholinesterase in the Cortex and Hippocampus of Rat.” *Translational Research* 157 (2): 100–107. https://doi.org/10.1016/j.trsl.2010.11.005.
- Konankachi S. 2020. Effect of Chronic Sleep Deprivation and Sleep Recovery on Hippocampal CA3 Neurons, Spatial Memory and Anxiety-like Behaviour in Rats. *Neurobiology of Learning and Memory* 187 (2022) 107559. doi:http://doi.org/10.1016/j.nlm.2021.107559.
- Krishnaveni M. 2012. “Flavonoid in Enhancing Memory Function Characterization of Reproductive Gene in Marine Fish View Project.” *Journal of Pharmacy Research* 5 (7): 3870–74. doi:https://www.researchgate.net/publication/258226325.
- Ma, M, Song J, Wang H, Shi F, Zhou N, Jiang J, Xu Y, Zhang L, Yang L, Zhou M. 2019. “Chronic Paradoxical Sleep Deprivation-Induced Depression-like Behavior, Energy Metabolism and Microbial Changes in Rats.” *Life Sciences* 225 (May): 88–97. doi:https://doi.org/10.1016/j.lfs.2019.04.006.
- Owens JA, Dearth-Wesley T, Lewin D, Gioia G, Whitaker RC. 2016. “Self-Regulation and Sleep Duration, Sleepiness, and Chronotype in Adolescents.” *Pediatrics* 138 (6). doi:https://doi.org/10.1542/peds.2016-1406.
- Prabhakar, Ch, and K. Bala Krishna. 2011. “A Review on Nanosuspensions in Drug Delivery.” *International Journal of Pharma and Bio Sciences* 2 (1): 549–58.
- Rendeiro C, Spencer JPE, Vauzour D, Butler LT, Ellis JA, Williams CM. 2009. “The Impact of Flavonoids on Spatial Memory in Rodents: From Behaviour to Underlying Hippocampal Mechanisms.” *Genes and Nutrition*. doi:https://doi.org/10.1007/s12263-009-0137-2.
- Tufik S, Andersen ML, Bittencourt LRA, De Mello MT. 2009. “Paradoxical Sleep Deprivation: Neurochemical, Hormonal and Behavioral Alterations. Evidence from 30 Years of Research” 81 (3): 521–38. www.scielo.br/aabc.
- Wu H, Dunnett S, Ho YS, Chang RCC. 2019. “The Role of Sleep Deprivation and Circadian Rhythm Disruption as Risk Factors of Alzheimer’s Disease.” *Frontiers in Neuroendocrinology*. Academic Press Inc. doi:https://doi.org/10.1016/j.yfrne.2019.100764.
- Taufiqurrachman, Wibowo S. 2006. Effect of purwoceng (*Pimpinella alpina*) extract in stimulating testosterone, Luteinizing hormone (LH) and Follicle Stimulating Hormone (FSH) in Sprague Dawley male rats. Prosiding Seminar Nasional dan Pameran Tumbuhan Obat Indonesia, XXVIII.Bogor. pp 45-54.

Purwoceng nanosuspension repairs spatial white albino wistar strains' spatial memory degeneration after sleep deprivation

ABSTRACT. *Paradoxical Sleep Deprivation* (PSD) induces oxidative stress and interferes permanent memory consolidation in hippocampus. Purwoceng (*Pimpinella prutjan Molken*) is herbal medicine with antioxidant effect. These effects will be more effective with nanosuspension technology. The research purposes is to find effect of PSD to rats' spatial memory reduction and to find purwoceng nanosuspension extract effect to improve rats' spatial memory after PSD stress induction. The research method is randomized controlled trial with posttest only with control group approach to 36 white male albino rats Wistar strain which is induced by 96 hours PSD stress model. Experiment groups is regular extract 25 mg/300g BW/day, purwoceng nanosuspension extract 25 mg/300 gBW/day, 50 mg/300 gBW/day, and 75 mg/300 gBW/day. Statistical analysis found that there is no significant effect of purwoceng extract to memory traveling time ($p=0.414$) and memory track length ($p=0.316$) between pre-PSD and post-PSD group. There is significant effect of PSD stress after purwoceng administration to memory track length and memory travelling time ($p=0,005$). The conclusion is that there is significant correlation between the difference of memory latency and memory traveling time of MWM test between the various purwoceng nanoemulsion dose. The 25-50 mg/300 gBW/day is effective dose of purwoceng nanoemulsion extract to repairs spatial memory degeneration after PSD stress.

Keywords: paradoxical sleep deprivation; spatial memory; sleep deprivation

INTRODUCTION

Sleep deprivation (SD) or lack of sleep can disrupt circadian rhythm and physiology mechanism of body (Ma *et al.* 2019). It induces oxidative stress which damages temporary and permanent memory consolidation as we find in Alzheimer, Parkinson, and another brain degenerative disease (Wu *et al.* 2019). Characteristics of these diseases are reduction of quality and quantity of post synapses neuron and hippocampus cell (Havekes, 2017). Paradoxical sleep deprivation elevates glucose metabolism up to 30 % until there is excess of free radicals, disrupt sleep-and-wake cycle, leads to antioxidant imbalance, oxidative stress in hippocampus and the other central nervous system part (Owens *et al.* 2016). Sleep deprivation intensifies corticosterone level, induces CA3 neuron atrophy and reduces arborization (dendrite branching) in hippocampus. Those effect generates spatial memory problem and anxiety behavior to experimental animals (Konankanchi, 2020).

Kindly explain some previous studies using *Pimpinella* sp. as an antioxidant plant in one paragraph

Indonesian unique herbal medicine (2019), Purwoceng (*Pimpinella prutjan Molkenb*) has antioxidant effect because of phenol and bioflavonoid content). Nanosuspension technology makes colloid particle can be dispersed into submicron size less than 1 μm , with mean sizes is 200 - 600 nm (Prabhakar & Krishna, 2011). The technology has been expected to increase absorption, bioavailability, onset, peak level and penetration compared with regular extract. Bioflavonoid as exogenous antioxidant can escalate antioxidant body level and reduces ROS free radicals as product of oxidative stress. This research purposes is to find sleep deprivation effect to spatial memory ability and antioxidant ability of purwoceng nanosuspension.

Stated the research novelty and the future impact here in one paragraph

MATERIALS AND METHODS

This is experimental, randomized controlled trial with posttest only, control group design research. The subjects are 36 white male albino rats Wistar strain, divided into 6 groups: Group A: PSD with sleep recovery; group B: PSD without sleep recovery; group C: PSD and Purwoceng extract 25 mg/300 gBW/day, group D: PSD + purwoceng nanosuspension extract 25 mg/300 gBW/day, group E: 50 mg/300 gBW/day; group F: 75 mg/300 gBW/day. The chosen dose is based on recent research by Pribadi, (2012) and Taufiqurrachman & Wibowo (2006). Their research doses are 25 mg/mL/day for 300-gram body weight or 83,25 mg/kgBW. Nanoemulsion extract dose is 25 mg/3 mL by single dose 3 mL nanoemulsion solution given by oral tube.

The purwoceng has been obtained from Batur village, Dieng plateau, Banjarnegara. Plant determination has been done in plant taxonomy laboratory of Biology Faculty, Universitas Jenderal

Commented [A1]: Need two more keyword taken from the contents of the article, not the title of the article

Commented [A2]: Kindly explain some previous studies using *Pimpinella* sp. as an antioxidant plant in one paragraph
Use also your previous studies on *Pimpinella* sp.

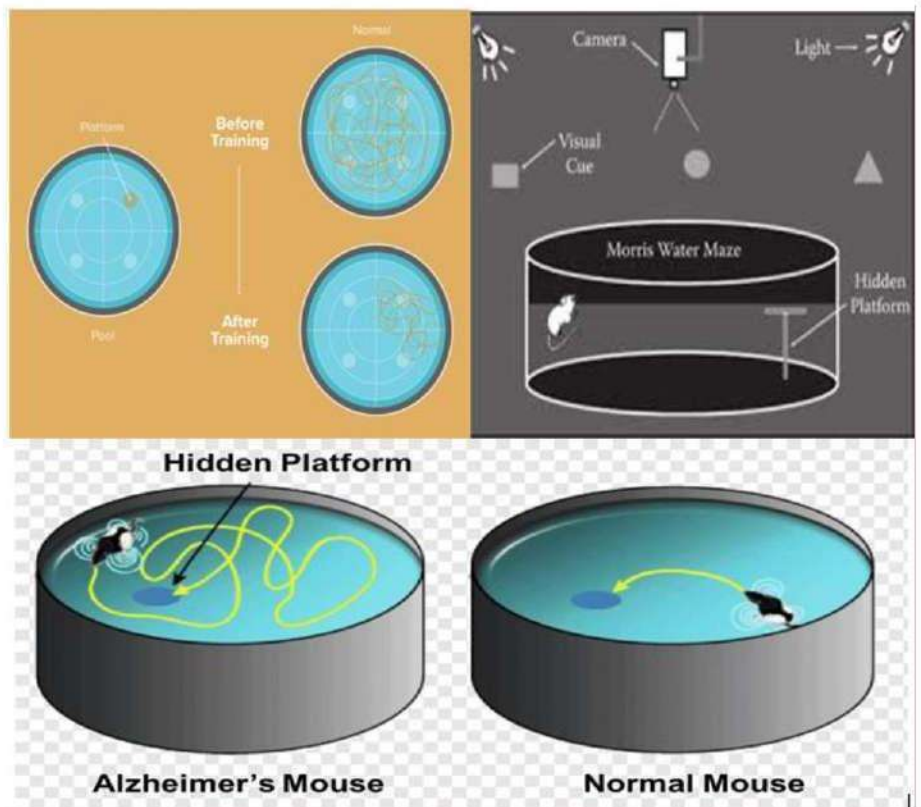
Commented [A3]: Stated the research novelty and the future impact here in one paragraph

Soedirman, Purwokerto. Nanoemulsion process has been done in Pharmacy Laboratory of Pharmacy Faculty, Jenderal Soedirman University, Purwokerto. Purwoceng nanoemulsion extract has been made by mixing purwoceng ethanol extract with Tween 80, stirred with magnetic stirrer 500 rpm for 15 minutes, added by PEG 400 and Virgin coconut oil, and then stirred for 15 minutes. The solution is added by a few aqudest slowly, and then stirred by magnetic stirrer 1000 rpm for 15 minutes, and then sonicated in 25 – 40 °C temperature for 30 minutes. The nanoemulsion phytochemicals are being screened to measure alkaloid and flavonoid components, followed by nanoemulsion characteristics test, such as organoleptic, transmittance percentage (%T), particle size, and particle size distribution and also Zeta Potential.

Paradoxical Sleep Deprivation. Experimental animals were being placed in stainless steel cage filled with water. It has 24x26x29 cm dimension, two platform with 6 cm diameter. The foothold has muscle atonia shock device which which automatically turns on every 10 minutes to give a shock effect for 1 second that causes a wake-up effect. This treatment is carried out for 96 hours with a break between 07.00 – 11.00 WIB (Arjadi et al. 2021).

Morris Water Maze (MWM) test. Assessment of the spatial memory ability of rats using the MWM test in a pool with a diameter of 180 cm and a height of 76 cm divided into 4 parts, one of which is given a footing (on the shallow bottom of the water, not on the surface of the water) to stand and stand on. The water filled with the pond consists of water and coconut milk/milk, which is useful for clouding the water, so the rats are judged to find a foothold based on memory. The test takes 7 days, namely the first 5 days the experimental animals are swam 4 times a day within 60 seconds, until they find a foothold (acquisition trial / acquisition test phase). On the 6th day, the stepping platform was taken and the experimental animals were allowed to swim to find a foothold according to what was remembered (probe trial/probe phase) and recorded the results of the trial probe as initial data for the memory test of the experimental mice and on the 7th day a spatial ability test/sensorineural MWM test/examination trial phase was conducted.

The treatment was documented by video camera and observed the spatial latency time ability test the spatial memory capabilities of the rats by counting the time recorded from the time it were entered into the pond until it were on a platform. The spatial ability test was tested for the length of the test track to assess memory capabilities. We get spatial data of the rats by measuring the area and distance of the path traveled in finding a foothold, and the results of the comparison of the distance measured in the actual pond diameter with the diameter of the pond in the video, multiplied by the distance in the video. The data is presented in tabular and graphical form, where the X-axis represents the day session from the acquisition trial to the 7th day of testing and the Y-axis represents latency time (in seconds) or track length (in cm) (Buccafusco, 2009)



Commented [A4]: This figure should be replaced with the high resolution one. Specially the black white picture.

Upload the picture one by one in this document, do not put the picture together.

Fig. 1. Test of spatial memory ability of experimental animals (A. Morris Water Maze pool B. Acquisition test phase C. Test results between normal and impaired memory)

The MWM test was carried out at the end of each treatment phase as reference data for indicators of spatial memory ability and became the basis for the analysis of the data used. The degree of degeneration of spatial memory abilities is determined by the longer the path length and the longer the latency time required to reach the target. Tests a few days before the sensorineural test (acquisition phase and probe phase) were carried out as a means of practice and trials to increase the frequency of target recognition by footing. The data displayed in the pre-PSD, post-PSD, and post-Purwoceng phases are descriptive data to see the pattern of spatial memory development per experimental rat in the MWM pool and analyzed to get a conclusion. Research ethics were obtained from the Health Research Ethics Commission, Faculty of Medicine, Jenderal Soedirman University, Number 097/KEPK/V/2021 dated 10 May 2021.

Data Analysis. The research data was tested for the normality of the data distribution using the Shapiro-Wilk and homogeneity test and data variance using Levene's Test. If the data transformation is normal and heterogeneous, it is analyzed using One Way of Variance (ANOVA) as a parametric test and if it is not normal, it is tested with Kruskal Wallis. The test was continued with the Tukey Post-Hoc test to determine whether there was a significant difference between the control group and the treatment group with a significance level of $p < 0.05$.

RESULTS AND DISCUSSION

The transmittance test showed that the size of the clarity and purity of the nanoemulsion formed

was 84.5% and although it did not reach 100%, it was sufficient as a marker of the validity of the nanoemulsion solution structurally. The particle size distribution test of the Purwoceng nanoemulsion solution was found to be 123.87 ± 28.9 nm which indicates that the particle size distribution is ideal because it is in the range of 20-200 nm, so that the stability and distribution of molecules in the dissolution medium is optimal. The results of the polydispersity index of the Purwoceng nanoemulsion solution obtained the number 0.37 ± 0.11 which indicates that the intermediate disparity is between homogeneous and heterogeneous. The results of the zeta potential of the Purwoceng nanoemulsion solution were found to be -16.56 ± 1.19 mV, which indicated good molecular stability of the nanoemulsion solution from particle attraction aggregation, because it was in the range of -30 to 30 mV. The results of the phytochemical screening test showed that the Purwoceng extraction solution was reactive in the alkaloid and flavonoid testing which indicated that the extraction solution was positive for qualitatively qualitative alkaloids and flavonoids.

Table 1. Comparison of observation results of mwm of latency time test data.

Groups	Latency time (seconds)		
	Pre-PSD	Post-PSD	After Purwoceng Treatment
A (PSD Non Sleep)	20,25	42,25	-
B (PSD + Sleep)	5,25	9,25	-
C (PSD + 25 mg extract)	13	21,25	46
D (PSD + 25 mg nanoemulsion)	15	39,25	27,25
E (PSD + 50 mg nanoemulsion)	7,5	12,5	12,5
F (PSD + 75 mg nanoemulsion)	11	7	12,25

Commented [A5]: All comma in table should be replaced with dot

Table 2. Data comparison of observation results long path of mwm examination trial per phase between groups of experimental wistar rats.

Groups	Track length (cm)		
	Pre-PSD	Post-PSD	After Purwoceng Treatment
A (PSD Non Sleep)	562,5	900,25	-
B (PSD + Sleep)	112	205	-
C (PSD + 25 mg extract)	255	511,25	1013,25
D (PSD + 25 mg nanoemulsion)	321,5	837	487,5
E (PSD + 50 mg nanoemulsion)	180	271,75	190,75
F (PSD + 75 mg nanoemulsion)	197,5	167	271,5

Commented [A6]: All comma in table should be replaced with dot

Based on the figures in Tables 1 and 2, it can be seen that there is a decreasing trend of spatial memory ability between the average rats after PSD treatment but statistically there is no significant difference between PSD to the decrease in spatial memory ability in rats and sleep recovery does not provide a difference to spatial memory ability. The paired t-test between pre-PSD and post-PSD in group A showed travel time $p = 0.168 > 0.05$ and path length $p = 0.145 > 0.05$ and Wilcoxon test in group B obtained travel time $p = 0.180 > 0.05$ and path length $p = 0.068 > 0.05$. These results differ from the findings of several studies on memory disorders.

Recent research (Khadrawy, Nour & Aboul Ezz 2011) stated that 72 hours of PSD treatment through reduced catalase activity and glutathione levels, inhibition of Na/K ATPase in the hippocampus and cerebral cortex, increased acetylcholinesterase and lipid peroxidation which resulted in the induction of oxidative stress and increased brain excitability can reduce memory performance and increase anxiety levels in rats. Recent research by Kamphuis et al., (2017) states that the disruptive consequences of degeneration of the prefrontal cortex in experimental rats treated with sleep disturbances for 7 days caused degeneration of the prefrontal cortex with symptoms of slower motor responses and impulsive reflexes. Increased anxiety in post-PSD rats resulted in increased brain excitability and overactivity of motor behavior that made the rat's instincts move

Commented [A7]: et al should be italic

faster which increased the length of the trajectory in the sensorineural MWM test.

Atrooz et al. (2019) stated that prolonged sleep disturbances increase the incidence of forgetting and cause memory fragmentation such as short and medium-term memory loss due to weakened associative pathways characterized by a decrease in the number of pyramidal and dendritic cells in the CA1 hippocampus area, the main area of memory pathway transmission. According to Wu et al. (2019), the pathophysiological mechanism of memory degeneration due to sleep disturbances is related to glymphatic-vascular-lymphatic clearance in brain macromolecular structures, increased oxidative stress in the brain and decreased levels of melatonin in blood circulation.

Hunter's research (2019) states that there is no evidence of a detrimental effect of REM sleep disturbances on the performance of experimental mice in the acquisition phase of the MWM test, both during retention and reversal and REM is only useful in helping improve learning performance and general memory. Research by Karabulut *et al.* (2019) states that the post-MWM sleep phase, especially during REM sleep, plays a very important role in modulating the consolidation and rapid repair of cells that play a role in memory which can improve the transcription of mRNA genes from pyramidal cells and lead to hippocampal neuroplasticity.

The explanation for the absence of a significant difference between PSD and the role of sleep recovery on spatial memory abilities in this study is still unknown but it is suspected that adequate sleep compensation after PSD and before the MWM acquisition phase to sensorineural testing. The short sleep compensation was able to provide a better consolidation effect on brain and hippocampal performance so that it could reduce the effect of decreasing spatial memory ability which is expected to exist in the rat group. Sleep compensation in PSD was more accommodating than when it was replaced with total sleep deprivation (TSD) treatment where mice were not allowed to sleep at all for several days. According to Tufik et al. (2009), adequate compensation from regular sleep-wake cycles can improve neurophysiological and behavioral changes significantly despite having experienced sleep disturbances, indicating that there is no significant difference in spatial memory ability between the groups of rats with sleep recovery and without sleep recovery because all groups received sleep compensation even with different duration.

Based on statistical tests, there was no significant difference between the administration of Purwoceng on spatial memory abilities in rats based on the length of the track and the latency time. The administration of purwoceng non-nanosuspension and nanosuspension extraction at a dose of 25 mg, 50 mg, or 75 mg did not give a significant difference in spatial memory ability. Data analysis using Paired t-test group C (non-nanoemulsion Purwoceng extract) showed travel time $p = 0.271 (> 0.05)$ and path length $p = 0.224 (> 0.05)$, group D (Purwoceng nanoemulsion 25 mg/gBW) obtained travel time $p = 0.21 > 0.05$ and path length $p = 0.249 (> 0.05)$, Wilcoxon test in group E (Purwoceng nanoemulsion 50 mg/gBW) obtained travel time $p = 0.465 (> 0.05)$ and path length $p = 0.465 (> 0.05)$, and group F (Purwoceng nanoemulsion 75 mg/gBW) obtained travel time $p = 0.651 (> 0.05)$ and path length $p = 0.647 (> 0.05)$. Bivariate analysis testing the spatial memory ability of rats after administration of Purwaceng through the One-Way ANOVA test showed a significant relationship between travel time ($p = 0.000 < 0.05$) and track length ($p = 0.001 < 0.05$) in groups C, D, E, and C. and F. The post hoc test showed that the lowest travel time was group D, followed by groups F and E, while the highest travel time was found in group C and in the section on track length, the lowest track length was group E, but not much different with groups D and F.

The explanation of the absence of significant differences between Purwoceng on post-PSD spatial memory ability is not certainly known. It is suspected that the active flavonoid substances in Purwaceng are able to reduce the level of cell aging and the level of tissue inflammation but cannot provide instantaneous improvement in the quality of spatial memory. Flavonoids can modulate neuronal signaling pathways that are important in memory processing, synaptic plasticity, and long-term potentiation mechanisms as the basis for the formation of a memory (Rendeiro et al., 2009) and improve cognitive memory through activation of kinases in the MAPK and P13 kinase pathways and accelerate the process of regulation of the cAMP response element-binding protein (CREB) which is

important in the memory storage process in the hippocampus and cerebral cortex (Krishnaveni, 2012). Nanoparticle preparation technology by emulsification was proven to produce significant pharmacological effects which was indicated by the difference in the level of decline in spatial memory ability at different doses of Purwoceng and non-nanoemulsion extract Purwoceng had a higher rate of degeneration of spatial memory ability compared to the group that received Purwoceng nanoemulsion.

CONCLUSION

There was no effect between the decrease in spatial memory ability and the number of pyramidal cells and hippocampal volume in albino male wistar rats treated with PSD. There was no significant effect of giving Purwoceng nanoemulsion on improving spatial memory ability of albino male wistar rats treated with PSD. There is a significant effect on the difference in latency and path length of the MWM test between doses of Purwoceng nanoemulsion. The dose of 25 - 50 mg is the effective dose of the Purwoceng nanoemulsion which results in a shorter path length and latency time indicating an improvement in post-PSD spatial memory degeneration.

ACKNOWLEDGEMENT

The author would like to thank to Head of Research and Community Service, Jenderal Sudirman University, Head of the Department of Anatomy, Faculty of Medicine, Jenderal Soedirman University, Dzicky Rifqi Fuady as proofreader and other parties have assisted in the research.

REFERENCES

- Arjadi, Fitranto, Nur Signa Aini Gumilas, Ika Murti Harini, Vitasari Indriani, and Lantip Rujito. 2021. "The Hepatotoxic and Nephrotoxic Effects of Purwoceng (*Pimpinella Pruatjan* Mol.) Roots Ethanol Extract Administration in Subchronic Dose." *Molekul* 16 (2): 163–69. <https://doi.org/10.20884/1.jm.2021.16.2.729>.
- Arjadi, Fitranto, Dhadhang Wahyu Kurniawan, Yudhi Wibowo, Wahyu Siswandari, and Lantip Rujito. 2019. "No Acute Toxicity Tests of Purwoceng (*Pimpinella Pruatjan* Mol.) Ethanolic Extract on Male Albino Rat by Determined Hepatorenal Function Test and Histopathology." *Molekul* 14 (2): 117–25. <https://doi.org/10.20884/1.jm.2019.14.2.542>.
- Atrooz, Fatin, Hesong Liu, Camila Kochi, and Samina Salim. 2019. "Early Life Sleep Deprivation: Role of Oxidative Inflammatory Processes." *Neuroscience* 406: 22–37. <https://doi.org/10.1016/j.neuroscience.2019.02.021>.
- Buccafusco, Jerry J. 2009. "Methods of Behaviour Analysis in Neuroscience. CEC Press, Second Edition.
- Hunter, Amy Silvestri. 2019. "Short-Term REM Deprivation Does Not Affect Acquisition or Reversal of a Spatial Learning Task." *Behavioural Processes* 169 (December). <https://doi.org/10.1016/j.beproc.2019.103985>.
- Kamphuis, Jeanine, Swetlana Baichel, Marike Lancel, Sietsje F. de Boer, Jaap M. Koolhaas, and Peter Meerlo. 2017. "Sleep Restriction in Rats Leads to Changes in Operant Behaviour Indicative of Reduced Prefrontal Cortex Function." *Journal of Sleep Research* 26 (1): 5–13. <https://doi.org/10.1111/jsr.12455>.
- Karabulut, Sebahattin, Keziban Korkmaz Bayramov, Ruslan Bayramov, Fadime Ozdemir, Tugba Topaloglu, Ergul Ergen, Kamile Yazgan, Ahmet Sevki Taskiran, and Asuman Gogeli. 2019. "Effects of Post-Learning REM Sleep Deprivation on Hippocampal Plasticity-Related Genes and MicroRNA in Mice." *Behavioural Brain Research* 361 (April): 7–13. <https://doi.org/10.1016/j.bbr.2018.12.045>.
- Pribadi, Wisnugroho Agung. 2012. Efektivitas Ekstrak Etanol Purwoceng (*Pimpinella Alpina*) terhadap Pertambahan Bobot Badan Tikus Betina Bunting pada Umur Kebuntingan 0 - 13 Hari. Skripsi. Fakultas Kedokteran Hewan, Institut Pertanian Bogor, Indonesia.
- Khadrawy, Yasser A., Neveen A. Nour, and Heba S. Aboul Ezz. 2011. "Effect of Oxidative Stress Induced by Paradoxical Sleep Deprivation on the Activities of Na⁺, K⁺ ATPase and Acetylcholinesterase in the Cortex and Hippocampus of Rat." *Translational Research* 157 (2): 100–107. <https://doi.org/10.1016/j.trst.2010.11.005>.
- Konankachi, Shuresh. 2020. Effect of Chronic Sleep Deprivation and Sleep Recovery on Hippocampal CA3 Neurons, Spatial Memory and Anxiety-like Behaviour in Rats. *Neurobiology of Learning and Memory* 187 (2022) 107559. <http://doi.org/10.1016/j.nlm.2021.107559>.
- Krishnaveni, Marimuthu, and Assistant professor. 2012. "Flavonoid in Enhancing Memory Function Characterization of Reproductive Gene in Marine Fish View Project." *Journal of Pharmacy Research* 5 (7): 3870–74. <https://www.researchgate.net/publication/258226325>.
- Ma, Weini, Jing Song, Heran Wang, Fangyu Shi, Nian Zhou, Jiaye Jiang, Ying Xu, Lei Zhang, Li Yang, and Mingmei Zhou. 2019. "Chronic Paradoxical Sleep Deprivation-Induced Depression-like Behavior, Energy Metabolism and

Commented [A8]: All references here are not suitable with our style reference. Kindly follow our style. We have our style references. For example for cited journal:

Spiotta AM, Stiefel ME, Gracias VH, Garuffe AM, Kofke WA, Maloney-Wilensky E, Troxel AB, Levine JM, Le Roux PD. 2010. Brain tissue oxygen-directed management and outcome in patients with severe traumatic brain injury. *Journal of Neurosurgery*. vol 113(3): 571–580. doi: <https://doi.org/10.3171/2010.1.JNS09506>.

Commented [A9]: Kindly add the references. Adapted reference is minimal 30 scientific journal with doi number

- Microbial Changes in Rats." *Life Sciences* 225 (May): 88–97. <https://doi.org/10.1016/j.lfs.2019.04.006>.
- Owens, Judith A., Tracy Dearth-Wesley, Daniel Lewin, Gerard Gioia, and Robert C. Whitaker. 2016. "Self-Regulation and Sleep Duration, Sleepiness, and Chronotype in Adolescents." *Pediatrics* 138 (6). <https://doi.org/10.1542/peds.2016-1406>.
- Prabhakar, Ch, and K. Bala Krishna. 2011. "A Review on Nanosuspensions in Drug Delivery." *International Journal of Pharma and Bio Sciences* 2 (1): 549–58.
- Rendeiro, Catarina, Jeremy P.E. Spencer, David Vauzour, Laurie T. Butler, Judi A. Ellis, and Claire M. Williams. 2009. "The Impact of Flavonoids on Spatial Memory in Rodents: From Behaviour to Underlying Hippocampal Mechanisms." *Genes and Nutrition*. <https://doi.org/10.1007/s12263-009-0137-2>.
- Tufik, Sergio, Monica L. Andersen, Lia R. A. Bittencourt, and Marco T. De Mello. 2009. "Paradoxical Sleep Deprivation: Neurochemical, Hormonal and Behavioral Alterations. Evidence from 30 Years of Research" 81 (3): 521–38. www.scielo.br/aabc.
- Wu, Hao, Sophie Dunnett, Yuen Shan Ho, and Raymond Chuen Chung Chang. 2019. "The Role of Sleep Deprivation and Circadian Rhythm Disruption as Risk Factors of Alzheimer's Disease." *Frontiers in Neuroendocrinology*. Academic Press Inc. <https://doi.org/10.1016/j.yfrne.2019.100764>.
- Taufiqurrachman and S. Wibowo. 2006. Effect of purwoceng (*Pimpinella alpina*) extract in stimulating testosterone, Luteinizing hormone (LH) and Follicle Stimulating Hormone (FSH) in Sprague Dawley male rats. Prosiding Seminar Nasional dan Pameran Tumbuhan Obat Indonesia, XXVIII. Bogor. pp 45-54.

1 **Purwoceng nanosuspension repairs spatial white albino wistar strains' spatial**
2 **memory degeneration after sleep deprivation**

3 **ABSTRACT.** *Paradoxical Sleep Deprivation* (PSD) induces oxidative stress and interferes permanent memory
4 consolidation in hippocampus. Purwoceng (*Pimpinella prutjan Molken*) is herbal medicine with antioxidant effect. These
5 effects will be more effective with nanosuspension technology. The research purposes is to find effect of PSD to rats'
6 spatial memory reduction and to find purwoceng nanosuspension extract effect to improve rats' spatial memory after PSD
7 stress induction. The research method is randomized controlled trial with posttest only with control group approach to
8 36 white male albino rats Wistar strain which is induced by 96 hours PSD stress model. Experiment groups is regular
9 extract 25 mg/300g BW/day, purwoceng nanosuspension extract 25 mg/300 gBW/day, 50 mg/300 gBW/day, and 75
10 mg/300 gBW/day. Statistical analysis found that there is no significant effect of purwoceng extract to memory traveling
11 time ($p=0.414$) and memory track length ($p=0.316$) between pre-PSD and post-PSD group. There is significant effect of
12 PSD stress after purwoceng administration to memory track length and memory travelling time ($p=0,005$). The conclusion
13 is that there is significant correlation between the difference of memory latency and memory traveling time of MWM test
14 between the various purwoceng nanoemulsion dose. The 25-50 mg/300 gBW/day is effective dose of purwoceng
15 nanoemulsion extract to repairs spatial memory degeneration after PSD stress.

16 **Keywords:** paradoxical sleep deprivation; spatial memory; sleep deprivation

17 **INTRODUCTION**

18 Sleep deprivation (SD) or lack of sleep can disrupt circadian rhythm and physiology mechanism
19 of body (Ma *et al.* 2019). It induces oxidative stress which damages temporary and permanent memory
20 consolidation as we find in Alzheimer, Parkinson, and another brain degenerative disease (Wu *et al.*
21 2019). Characteristics of these diseases are reduction of quality and quantity of post synapses neuron
22 and hippocampus cell (Havekes, 2017). Paradoxical sleep deprivation elevates glucose metabolism
23 up to 30 % until there is excess of free radicals, disrupt sleep-and-wake cycle, leads to antioxidant
24 imbalance, oxidative stress in hippocampus and the other central nervous system part (Owens *et al.*
25 2016). Sleep deprivation intensifies corticosterone level, induces CA3 neuron atrophy and reduces
26 arborization (dendrite branching) in hippocampus. Those effect generates spatial memory problem
27 and anxiety behavior to experimental animals (Konankanchi, 2020).

28 Kindly explain some previous studies using *Pimpinella* sp. as an antioxidant plant in one
29 paragraph

30 Indonesian unique herbal medicine (2019), Purwoceng (*Pimpinella prutjan Molkenb*) has
31 antioxidant effect because of phenol and bioflavonoid content). Nanosuspension technology makes
32 colloid particle can be dispersed into submicron size less than 1 μm , with mean sizes is 200 - 600 nm
33 (Prabhakar & Krishna, 2011). The technology has been expected to increase absorption,
34 bioavailability, onset, peak level and penetration compared with regular extract. Bioflavonoid as
35 exogen antioxidant can escalate antioxidant body level and reduces ROS free radicals as product of
36 oxidative stress. This research purposes is to find sleep deprivation effect to spatial memory ability
37 and antioxidant ability of purwoceng nanosuspension.

38 Stated the research novelty and the future impact here in one paragraph

39 **MATERIALS AND METHODS**

40 This is experimental, randomized controlled trial with posttest only, control group design
41 research. The subjects are 36 white male albino rats Wistar strain, divided into 6 groups: Goup A:
42 PSD with sleep recovery; group B: PSD without sleep recovery; group C: PSD and Purwoceng extract
43 25 mg/300 gBW/day, group D: PSD + purwoceng nanosuspension extract 25 mg/300 gBW/day,
44 group E: 50 mg/300 gBW/day; group F: 75 mg/300 gBW/day. The chosen dose is based on recent
45 research by Pribadi, (2012) and Taufiqurrachman & Wibowo (2006). Their research doses are 25
46 mg/mL/day for 300-gram body weight or 83,25 mg/kgBW. Nanoemulsion extract dose is 25 mg/3
47 mL by single dose 3 mL nanoemulsion solution given by oral tube.

48 The purwoceng has been obtained from Batur village, Dieng plateau, Banjarnegara. Plant
49 determination has been done in plant taxonomy laboratory of Biology Faculty, Universitas Jenderal
50

Commented [A1]: Need two more keyword taken from the contents of the article, not the title of the article

Commented [DC2]: Make it easier to read:
Sleep deprivation (SD) or lack of sleep can disrupt the body's circadian rhythm and physiology mechanism (Ma *et al.* 2019). It induces oxidative stress, which damages temporary and permanent memory consolidation, as we find in Alzheimer, Parkinson, and other degenerative brain diseases (Wu *et al.* 2019). The characteristics of these diseases are the reduction of quality and quantity of post synapses neurons and hippocampus cells (Havekes, 2017). Paradoxical sleep deprivation elevates glucose metabolism up to 30 % until there is an excess of free radicals, disrupts the sleep-and-wake cycle, leads to antioxidant imbalance, oxidative stress in the hippocampus, and the other central nervous system (Owens *et al.* 2016). Sleep deprivation intensifies corticosterone levels, induces CA3 neuron atrophy and reduces arborization (dendrite branching) in the hippocampus. That effect generates experimental animals' spatial memory problems and anxiety behavior (Konankanchi, 2020).

Commented [A3]: Kindly explain some previous studies using *Pimpinella* sp. as an antioxidant plant in one paragraph

Use also your previous studies on *Pimpinella* sp.

Commented [DC4]: Agreed

Commented [DC5]: Consider rephrasing the paragraph to: Indonesian unique herbal medicine (2019), Purwoceng (*Pimpinella prutjan Molkenb*), has an antioxidant effect because of phenol and bioflavonoid content). Nanosuspension technology makes colloid particles be dispersed into submicron sizes less than 1 μm , with mean sizes 200 - 600 nm (Prabhakar & Krishna, 2011). The technology has been expected to increase absorption, bioavailability, onset, peak level and penetration compared with the regular extract. Bioflavonoids as exogen antioxidants can escalate antioxidant body level and reduce ROS free radicals as a product of oxidative stress. This research aims to find sleep deprivation effect on spatial memory ability and the antioxidant ability of purwoceng nanosuspension.

Commented [A6]: Stated the research novelty and the future impact here in one paragraph

Commented [DC7]: Agreed

Commented [DC8]: Consider rephrasing the paragraph:
This is an experimental, randomized controlled trial with posttest only, control group design research. The subjects are 36 white male albino rats Wistar strain, divided into six groups: Group A: PSD with sleep recovery; group B: PSD without sleep recovery; group C: PSD and Purwoceng extract 25 mg/300 gBW/day, group D: PSD + purwoceng nanosuspension extract 25 mg/300 gBW/day, group E: 50 mg/300 gBW/day; group F: 75 mg/300 gBW/day. The chosen dose is based on recent research by Pribadi (2012) and Taufiqurrachman & Wibowo (2006). Their research doses are 25 mg/mL/day for 300-gram body weight or 83,25 mg/kg BW. Nanoemulsion extract dose is 25 mg/3 mL by single-dose 3 mL nanoemulsion solution given by oral tube.

52 Soedirman, Purwokerto. Nanoemulsion process has been done in Pharmacy Laboratory of Pharmacy
53 Faculty, Jenderal Soedirman University, Purwokerto. Purwoceng nanoemulsion extract has been
54 made by mixing purwoceng ethanol extract with Tween 80, stirred with magnetic stirrer 500 rpm for
55 15 minutes, added by PEG 400 and Virgin coconut oil, and then stirred for 15 minutes. The solution
56 is added by a few aqudest slowly, and then stirred by magnetic stirrer 1000 rpm for 15 minutes, and
57 then sonicated in 25 – 40 °C temperature for 30 minutes. The nanoemulsion phytochemicals are
58 being screened to measure alkaloid and flavonoid components, followed by nanoemulsion
59 characteristics test, such as organoleptic, transmittance percentage (%T), particle size, and particle
60 size distribution and also Zeta Potential.

61 **Paradoxical Sleep Deprivation.** Experimental animals were being placed in stainless steel cage
62 filled with water. It has 24x26x29 cm dimension, two platform with 6 cm diameter. The foothold has
63 muscle atonia shock device which which automatically turns on every 10 minutes to give a shock
64 effect for 1 second that causes a wake-up effect. This treatment is carried out for 96 hours with a
65 break between 07.00 – 11.00 WIB (Arjadi et al. 2021).

66 **Morris Water Maze (MWM) test.** Assessment of the spatial memory ability of rats using the
67 MWM test in a pool with a diameter of 180 cm and a height of 76 cm divided into 4 parts, one of
68 which is given a footing (on the shallow bottom of the water, not on the surface of the water) to stand
69 and stand on. The water filled with the pond consists of water and coconut milk/milk, which is useful
70 for clouding the water, so the rats are judged to find a foothold based on memory. The test takes 7
71 days, namely the first 5 days the experimental animals are swam 4 times a day within 60 seconds,
72 until they find a foothold (acquisition trial / acquisition test phase). On the 6th day, the stepping
73 platform was taken and the experimental animals were allowed to swim to find a foothold according
74 to what was remembered (probe trial/probe phase) and recorded the results of the trial probe as initial
75 data for the memory test of the experimental mice and on the 7th day a spatial ability test/sensorineural
76 MWM test/examination trial phase was conducted.

77 The treatment was documented by video camera and observed the spatial latency time ability test
78 the spatial memory capabilities of the rats by counting the time recorded from the time it were entered
79 into the pond until it were on a platform. The spatial ability test was tested for the length of the test
80 track to assess memory capabilities. We get spatial data of the rats by measuring the area and distance
81 of the path traveled in finding a foothold, and the results of the comparison of the distance measured
82 in the actual pond diameter with the diameter of the pond in the video, multiplied by the distance in
83 the video. The data is presented in tabular and graphical form, where the X-axis represents the day
84 session from the acquisition trial to the 7th day of testing and the Y-axis represents latency time (in
85 seconds) or track length (in cm) (Buccafusco, 2009)

86

Commented [DC9]: Consider paraphrase the paragraph:
The purwoceng has been taken from Batur village, Dieng plateau, Banjarnegara. Plant determination has been done in the plant taxonomy laboratory of Biology Faculty, Universitas Jenderal Soedirman, Purwokerto. Nanoemulsion method has been done in Pharmacy Laboratory of Pharmacy Faculty, Jenderal Soedirman University, Purwokerto. Purwoceng nanoemulsion extract has been made by mixing purwoceng ethanol extract with Tween 80, stirred with magnetic stirrer 500 rpm for 15 minutes, added by PEG 400 and Virgin coconut oil, and then stirred for 15 minutes. The solution is added by a few aqua dest slowly, then stirred by magnetic stirrer 1000 rpm for 15 minutes, and then sonicated in 25 – 40 oC temperature for 30 minutes. The nanoemulsion phytochemicals are being screened to measure alkaloid and flavonoid components, followed by nanoemulsion characteristics test, such as organoleptic, transmittance percentage (%T), particle size, particle size distribution also Zeta Potential.

Commented [DC10]: Make it easier to read:
Experimental animals were being placed in a stainless steel cage filled with water. It has 24x26x29 cm dimension, two platforms with 6 cm diameter. The foothold has a muscle atonia shock device that automatically turns on every 10 minutes to give a shock effect for 1 second that causes a wake-up effect. This treatment is carried out for 96 hours with a break between 07.00 – 11.00 WIB (Arjadi et al., 2021).

Commented [DC11]: Consider rephrasing the paragraph to:
The MWM test used to assess rats' spatial memory ability in a pool with a diameter of 180 cm and a height of 76 cm separated into four sections, one of which is provided with a footing (on the shallow bottom of the water, not on the surface) to stand and stand on. The water-filled pond consists of water and coconut milk/milk, which helps cloud the water, so the rats are judged to find a foothold based on memory. The test takes seven days, namely the first five days the experimental animals are swim four times a day within 60 seconds until they find a foothold (acquisition trial/acquisition test phase). On the sixth day, the stepping platform was taken, and the experimental animals were allowed to swim to find a foothold according to what was remembered (probe trial/probe phase). They recorded the results of the trial probe as initial data for the memory test of the experimental mice, and on the seventh day, a spatial ability test/sensorineural MWM test/examination trial phase was conducted.

Commented [DC12]: Consider rephrasing the paragraph to:
The treatment was documented by video camera and observed the spatial latency time ability to test the spatial memory capabilities of the rats by counting the time recorded from the time it was entered into the pond until it was on a platform. The spatial ability test was tested for the length of the test track to assess memory capabilities. We collect spatial data of the rats by measuring the area and distance of the path travelled to find a foothold. The results of comparing distance measured in actual pond diameter with the diameter of the pond in the video, multiplied by the distance in the video. The data is presented in tabular and graphical form, where the X-axis represents the day session from the acquisition trial to the seventh day of testing and the Y-axis represents latency time (in seconds) or track length (in cm) (Buccafusco, 2009)

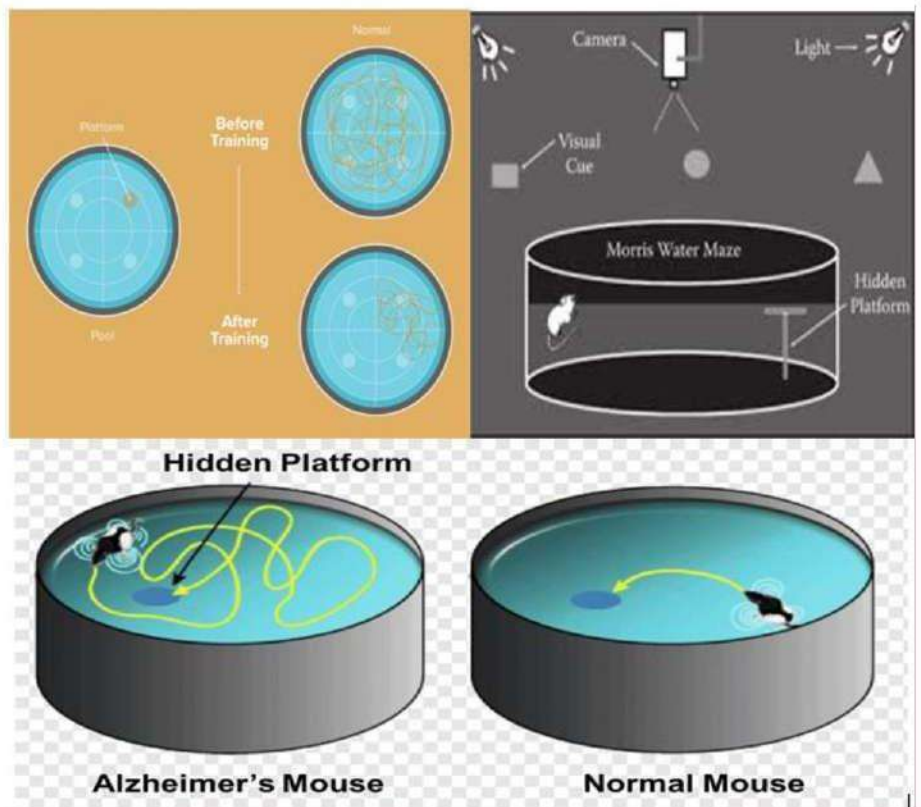


Fig. 1. Test of spatial memory ability of experimental animals (A. Morris Water Maze pool B. Acquisition test phase C. Test results between normal and impaired memory)

The MWM test was carried out at the end of each treatment phase as reference data for indicators of spatial memory ability and became the basis for the analysis of the data used. The degree of degeneration of spatial memory abilities is determined by the longer the path length and the longer the latency time required to reach the target. Tests a few days before the sensorineural test (acquisition phase and probe phase) were carried out as a means of practice and trials to increase the frequency of target recognition by footing. The data displayed in the pre-PSD, post-PSD, and post-Purwoceng phases are descriptive data to see the pattern of spatial memory development per experimental rat in the MWM pool and analyzed to get a conclusion. Research ethics were obtained from the Health Research Ethics Commission, Faculty of Medicine, Jenderal Soedirman University, Number 097/KEPK/V/2021 dated 10 May 2021.

Data Analysis. The research data was tested for the normality of the data distribution using the Shapiro-Wilk and homogeneity test and data variance using Levene's Test. If the data transformation is normal and heterogeneous, it is analyzed using One Way of Variance (ANOVA) as a parametric test and if it is not normal, it is tested with Kruskal Wallis. The test was continued with the Tukey Post-Hoc test to determine whether there was a significant difference between the control group and the treatment group with a significance level of $p < 0.05$.

RESULTS AND DISCUSSION

The transmittance test showed that the size of the clarity and purity of the nanoemulsion formed

Commented [A13]: This figure should be replaced with the high resolution one. Specially the black white picture.

Upload the picture one by one in this document, do not put the picture together.

Commented [DC14]: Consider changing "longer" to "more extended"

Commented [DC15]: , and

87
88
89
90
91
92
93
94
95
96
97
98
99
100
101
102
103
104
105
106
107
108
109
110

111 was 84.5% and although it did not reach 100%, it was sufficient as a marker of the validity of the
 112 nanoemulsion solution structurally. The particle size distribution test of the Purwocong nanoemulsion
 113 solution was found to be 123.87±28.9 nm which indicates that the particle size distribution is ideal
 114 because it is in the range of 20-200 nm, so that the stability and distribution of molecules in the
 115 dissolution medium is optimal. The results of the polydispersity index of the Purwocong
 116 nanoemulsion solution obtained the number 0.37±0.11 which indicates that the intermediate disparity
 117 is between homogeneous and heterogeneous. The results of the zeta potential of the Purwocong
 118 nanoemulsion solution were found to be -16.56±1.19 mV, which indicated good molecular stability
 119 of the nanoemulsion solution from particle attraction aggregation, because it was in the range of -30
 120 to 30 mV. The results of the phytochemical screening test showed that the Purwocong extraction
 121 solution was reactive in the alkaloid and flavonoid testing which indicated that the extraction solution
 122 was positive for qualitatively qualitative alkaloids and flavonoids.

123
124 **Table 1.** Comparison of observation results of mwm of latency time test data.

Groups	Latency time (seconds)		
	Pre-PSD	Post-PSD	After Purwocong Treatment
A (PSD Non Sleep)	20,25	42,25	-
B (PSD + Sleep)	5,25	9,25	-
C (PSD + 25 mg extract)	13	21,25	46
D (PSD + 25 mg nanoemulsion)	15	39,25	27,25
E (PSD + 50 mg nanoemulsion)	7,5	12,5	12,5
F (PSD + 75 mg nanoemulsion)	11	7	12,25

125
126 **Table 2.** Data comparison of observation results long path of mwm examination trial per phase between groups of
127 experimental wistar rats.

Groups	Track length (cm)		
	Pre-PSD	Post-PSD	After Purwocong Treatment
A (PSD Non Sleep)	562,5	900,25	-
B (PSD + Sleep)	112	205	-
C (PSD + 25 mg extract)	255	511,25	1013,25
D (PSD + 25 mg nanoemulsion)	321,5	837	487,5
E (PSD + 50 mg nanoemulsion)	180	271,75	190,75
F (PSD + 75 mg nanoemulsion)	197,5	167	271,5

128
129 Based on the figures in Tables 1 and 2, it can be seen that there is a decreasing trend of spatial
130 memory ability between the average rats after PSD treatment but statistically there is no significant
131 difference between PSD to the decrease in spatial memory ability in rats and sleep recovery does not
132 provide a difference to spatial memory ability. The paired t-test between pre-PSD and post-PSD in
133 group A showed travel time $p = 0.168 > 0.05$ and path length $p = 0.145 > 0.05$ and Wilcoxon test in
134 group B obtained travel time $p = 0.180 > 0.05$ and path length $p = 0.068 > 0.05$. These results differ
135 from the findings of several studies on memory disorders.

136 Recent research (Khadrawy, Nour & Aboul Ezz 2011) stated that 72 hours of PSD treatment
137 through reduced catalase activity and glutathione levels, inhibition of Na/K ATPase in the
138 hippocampus and cerebral cortex, increased acetylcholinesterase and lipid peroxidation which
139 resulted in the induction of oxidative stress and increased brain excitability can reduce memory
140 performance and increase anxiety levels in rats. Recent research by Kamphuis et al., (2017) states
141 that the disruptive consequences of degeneration of the prefrontal cortex in experimental rats treated
142 with sleep disturbances for 7 days caused degeneration of the prefrontal cortex with symptoms of
143 slower motor responses and impulsive reflexes. Increased anxiety in post-PSD rats resulted in
144 increased brain excitability and overactivity of motor behavior that made the rat's instincts move

Commented [DC16]: The transmittance test showed that the size of the clarity and purity of the nanoemulsion formed was 84.5%, and although it did not reach 100%, it was sufficient as a marker of the validity of the nanoemulsion solution structurally. The particle size distribution test of the Purwocong nanoemulsion solution was found to be 123.87±28.9 nm which indicates that the particle size distribution is ideal because it is in the range of 20-200 nm so that the stability and distribution of molecules in the dissolution medium is optimal. The results of the polydispersity index of the Purwocong nanoemulsion solution obtained the number 0.37±0.11, which indicates that the intermediate disparity is between homogeneous and heterogeneous. The results of the zeta potential of the Purwocong nanoemulsion solution were found to be -16.56±1.19 mV, which indicated good molecular stability of the nanoemulsion solution from particle attraction aggregation because it was in the range of -30 to 30 mV. The results of the phytochemical screening test showed that the Purwocong extraction solution was reactive in the alkaloid and flavonoid testing, which indicated that the extraction solution was positive for qualitatively qualitative alkaloids and flavonoids.

Commented [A17]: All comma in table should be replaced with dot.

Commented [A18]: All comma in table should be replaced with dot.

Commented [DC19]: . However, statistically,

Commented [A20]: et al should be italic

Commented [DC21]: seven

145 faster which increased the length of the trajectory in the sensorineural MWM test.

146 Atrooz et al. (2019) stated that prolonged sleep disturbances increase the incidence of forgetting
147 and cause memory fragmentation such as short and medium-term memory loss due to weakened
148 associative pathways characterized by a decrease in the number of pyramidal and dendritic cells in
149 the CA1 hippocampus area, the main area of memory pathway transmission. According to Wu et al.
150 (2019), the pathophysiological mechanism of memory degeneration due to sleep disturbances is
151 related to glymphatic-vascular-lymphatic clearance in brain macromolecular structures, increased
152 oxidative stress in the brain and decreased levels of melatonin in blood circulation.

153 Hunter's research (2019) states that there is no evidence of a detrimental effect of REM sleep
154 disturbances on the performance of experimental mice in the acquisition phase of the MWM test,
155 both during retention and reversal and REM is only useful in helping improve learning performance
156 and general memory. Research by Karabulut *et al.* (2019) states that the post-MWM sleep phase,
157 especially during REM sleep, plays a very important role in modulating the consolidation and rapid
158 repair of cells that play a role in memory which can improve the transcription of mRNA genes from
159 pyramidal cells and lead to hippocampal neuroplasticity.

160 The explanation for the absence of a significant difference between PSD and the role of sleep
161 recovery on spatial memory abilities in this study is still unknown but it is suspected that adequate
162 sleep compensation after PSD and before the MWM acquisition phase to sensorineural testing. The
163 short sleep compensation was able to provide a better consolidation effect on brain and hippocampal
164 performance so that it could reduce the effect of decreasing spatial memory ability which is expected
165 to exist in the rat group. Sleep compensation in PSD was more accommodating than when it was
166 replaced with total sleep deprivation (TSD) treatment where mice were not allowed to sleep at all for
167 several days. According to Tufik *et al.* (2009), adequate compensation from regular sleep-wake cycles
168 can improve neurophysiological and behavioral changes significantly despite having experienced
169 sleep disturbances, indicating that there is no significant difference in spatial memory ability between
170 the groups of rats with sleep recovery and without sleep recovery because all groups received sleep
171 compensation even with different duration.

172 Based on statistical tests, there was no significant difference between the administration of
173 Purwoceng on spatial memory abilities in rats based on the length of the track and the latency time.
174 The administration of purwoceng non-nanosuspension and nanosuspension extraction at a dose of 25
175 mg, 50 mg, or 75 mg did not give a significant difference in spatial memory ability. Data analysis
176 using Paired t-test group C (non-nanoemulsion Purwoceng extract) showed travel time $p = 0.271 (> 0.05)$
177 and path length $p = 0.224 (> 0.05)$, group D (Purwoceng nanoemulsion 25 mg/gBW) obtained
178 travel time $p = 0.21 > 0.05$ and path length $p = 0.249 (> 0.05)$, Wilcoxon test in group E (Purwoceng
179 nanoemulsion 50 mg/gBW) obtained travel time $p = 0.465 (> 0.05)$ and path length $p = 0.465 (> 0.05)$,
180 and group F (Purwoceng nanoemulsion 75 mg/gBW) obtained travel time $p = 0.651 (> 0.05)$ and path
181 length $p = 0.647 (> 0.05)$. Bivariate analysis testing the spatial memory ability of rats after
182 administration of Purwaceng through the One-Way ANOVA test showed a significant relationship
183 between travel time ($p = 0.000 < 0.05$) and track length ($p = 0.001 < 0.05$) in groups C, D, E, and C.
184 and F. The post hoc test showed that the lowest travel time was group D, followed by groups F and
185 E, while the highest travel time was found in group C and in the section on track length, the lowest
186 track length was group E, but not much different with groups D and F.

187 The explanation of the absence of significant differences between Purwoceng on post-PSD
188 spatial memory ability is not certainly known. It is suspected that the active flavonoid substances in
189 Purwaceng are able to reduce the level of cell aging and the level of tissue inflammation but cannot
190 provide instantaneous improvement in the quality of spatial memory. Flavonoids can modulate
191 neuronal signaling pathways that are important in memory processing, synaptic plasticity, and long-
192 term potentiation mechanisms as the basis for the formation of a memory (Rendeiro *et al.*, 2009) and
193 improve cognitive memory through activation of kinases in the MAPK and P13 kinase pathways and
194 accelerate the process of regulation of the cAMP response element-binding protein (CREB) which is

Commented [DC22]: Consider rephrasing the sentence to: Increased anxiety in post-PSD rats resulted in increased brain excitability and overactivity of motor behavior that made the rat's instincts move faster, increasing the trajectory length in the sensorineural MWM test.

Commented [DC23]: Consider changing to "central"

Commented [DC24]: Consider adding a comma ", and"

Commented [DC25]: Consider changing to "available"

Commented [DC26]: Changing to "a critical"

Commented [DC27]: Consider changing to "However, it is suspected"

Commented [DC28]: provided

Commented [DC29]: the brain

Commented [DC30]: Consider changing to "to"

Commented [DC31]: , which is expected

Commented [DC32]: Consider adding a comma "treatment,"

Commented [DC33]: Consider removing it

Commented [DC34]: Consider removing it

195 important in the memory storage process in the hippocampus and cerebral cortex (Krishnaveni, 2012),
196 Nanoparticle preparation technology by emulsification was proven to produce significant
197 pharmacological effects which was indicated by the difference in the level of decline in spatial
198 memory ability at different doses of Purwoceng and non-nanoemulsion extract Purwoceng had a
199 higher rate of degeneration of spatial memory ability compared to the group that received Purwoceng
200 nanoemulsion.

201 202 CONCLUSION

203 There was no effect between the decrease in spatial memory ability and the number of pyramidal
204 cells and hippocampal volume in albino male wistar rats treated with PSD. There was no significant
205 effect of giving Purwoceng nanoemulsion on improving spatial memory ability of albino male wistar
206 rats treated with PSD. There is a significant effect on the difference in latency and path length of the
207 MWM test between doses of Purwoceng nanoemulsion. The dose of 25 - 50 mg is the effective dose
208 of the Purwoceng nanoemulsion which results in a shorter path length and latency time indicating an
209 improvement in post-PSD spatial memory degeneration.

210 211 ACKNOWLEDGEMENT

212 The author would like to thank to Head of Research and Community Service, Jenderal Sudirman
213 University, Head of the Department of Anatomy, Faculty of Medicine, Jenderal Soedirman
214 University, Dzicky Rifqi Fuady as proofreader and other parties have assisted in the research.

215 216 REFERENCES

- 217 Arjadi, Fitranto, Nur Signa Aini Gumilas, Ika Murti Harini, Vitasari Indriani, and Lantip Rujito. 2021. "The Hepatotoxic
218 and Nephrotoxic Effects of Purwoceng (*Pimpinella Pruatjan* Mol.) Roots Ethanol Extract Administration in
219 Subchronic Dose." *Molekul* 16 (2): 163–69. <https://doi.org/10.20884/1.jm.2021.16.2.729>.
- 220 Arjadi, Fitranto, Dhadhang Wahyu Kurniawan, Yudhi Wibowo, Wahyu Siswandari, and Lantip Rujito. 2019. "No Acute
221 Toxicity Tests of Purwoceng (*Pimpinella Pruatjan* Mol.) Ethanolic Extract on Male Albino Rat by Determined
222 Hepatorenal Function Test and Histopathology." *Molekul* 14 (2): 117–25.
223 <https://doi.org/10.20884/1.jm.2019.14.2.542>.
- 224 Atrooz, Fatin, Hesong Liu, Camila Kochi, and Samina Salim. 2019. "Early Life Sleep Deprivation: Role of Oxido-
225 Inflammatory Processes." *Neuroscience* 406: 22–37. <https://doi.org/10.1016/j.neuroscience.2019.02.021>.
- 226 Buccafusco, Jerry J. 2009. "Methods of Behaviour Analysis in Neuroscience. CEC Press, Second Edition.
- 227 Hunter, Amy Silvestri. 2019. "Short-Term REM Deprivation Does Not Affect Acquisition or Reversal of a Spatial
228 Learning Task." *Behavioural Processes* 169 (December). <https://doi.org/10.1016/j.beproc.2019.103985>.
- 229 Kamphuis, Jeanine, Svetlana Baichel, Marika Lancel, Sietse F. de Boer, Jaap M. Koolhaas, and Peter Meerlo. 2017.
230 "Sleep Restriction in Rats Leads to Changes in Operant Behaviour Indicative of Reduced Prefrontal Cortex
231 Function." *Journal of Sleep Research* 26 (1): 5–13. <https://doi.org/10.1111/jsr.12455>.
- 232 Karabulut, Sebahattin, Keziban Korkmaz Bayramov, Ruslan Bayramov, Fadime Ozdemir, Tugba Topaloglu, Ergul Ergen,
233 Kamile Yazgan, Ahmet Sevki Taskiran, and Asuman Golgeli. 2019. "Effects of Post-Learning REM Sleep
234 Deprivation on Hippocampal Plasticity-Related Genes and MicroRNA in Mice." *Behavioural Brain Research* 361
235 (April): 7–13. <https://doi.org/10.1016/j.bbr.2018.12.045>.
- 236 Pribadi, Wisnugroho Agung. 2012. Efektivitas Ekstrak Etanol Purwoceng (*Pimpinella Alpina*) terhadap Pertambahan
237 Bobot Badan Tikus Betina Bunting pada Umur Kebuntingan 0 - 13 Hari. Skripsi. Fakultas Kedokteran Hewan,
238 Institut Pertanian Bogor, Indonesia.
- 239 Khadrawy, Yasser A., Neveen A. Nour, and Heba S. Aboul Ezz. 2011. "Effect of Oxidative Stress Induced by Paradoxical
240 Sleep Deprivation on the Activities of Na⁺, K⁺ ATPase and Acetylcholinesterase in the Cortex and Hippocampus
241 of Rat." *Translational Research* 157 (2): 100–107. <https://doi.org/10.1016/j.trst.2010.11.005>.
- 242 Konankachi, Shuresh. 2020. Effect of Chronic Sleep Deprivation and Sleep Recovery on Hippocampal CA3 Neurons,
243 Spatial Memory and Anxiety-like Behaviour in Rats. *Neurobiology of Learning and Memory* 187 (2022) 107559.
244 <http://doi.org/10.1016/j.nlm.2021.107559>.
- 245 Krishnaveni, Marimuthu, and Assistant professor. 2012. "Flavonoid in Enhancing Memory Function Characterization of
246 Reproductive Gene in Marine Fish View Project." *Journal of Pharmacy Research* 5 (7): 3870–74.
247 <https://www.researchgate.net/publication/258226325>.
- 248 Ma, Weini, Jing Song, Heran Wang, Fangyu Shi, Nian Zhou, Jiaye Jiang, Ying Xu, Lei Zhang, Li Yang, and Mingmei
249 Zhou. 2019. "Chronic Paradoxical Sleep Deprivation-Induced Depression-like Behavior, Energy Metabolism and

Commented [DC35]: The explanation of the absence of significant differences between Purwoceng on post-PSD spatial memory ability is not certainly known. It is suspected that the active flavonoid substances in Purwoceng can reduce the level of cell ageing and the level of tissue inflammation but cannot immediately improve the quality of spatial memory. Flavonoids can modulate neuronal signalling pathways essential in-memory processing, synaptic plasticity, and long-term potentiation mechanisms as the basis for memory formation (Rendeiro et al., 2009). Improve cognitive memory by activating kinases in the MAPK and P33 kinase pathways and accelerate regulating the cAMP response element-binding protein (CREB), which is essential in the memory storage process in the hippocampus and cerebral cortex (Krishnaveni, 2012). The nanoparticle preparation method by emulsification created significant pharmacological effects, which indicated the difference in the level of loss in spatial memory ability at different dosages of Purwoceng and non-nanoemulsion extract Purwoceng had a higher rate of deterioration of spatial memory ability compared to the group that received Purwoceng nanoemulsion.

Commented [DC36]: Consider paraphrasing the paragraph:
In albino male wistar rats treated with PSD, there was no correlation between the loss in spatial memory performance and the number of pyramidal cells or hippocampal volume. Purwoceng nanoemulsion had no significant influence on the spatial memory ability of albino male wistar rats treated with PSD. Between dosages of Purwoceng nanoemulsion, there is a substantial change in the latency and path length of the MWM test.

Commented [A37]: All references here are not suitable with our style reference. Kindly follow our style. We have our style references. For example for cited journal:

Spiotta AM, Stiefel MF, Gracias VH, Garuffe AM, Korfke WA, Maloney-Wilensky E, Troxel AB, Levine JM, Le Roux PD. 2010. Brain tissue oxygen-directed management and outcome in patients with severe traumatic brain injury. *Journal of Neurosurgery*. vol 113(3): 571–580. doi: <https://doi.org/10.3171/2010.1.JNS09506>.

Commented [A38]: Kindly add the references.
Adapted reference is minimal 30 scientific journal with doi number

Commented [DC39]: Following author guidelines to cited article

250 Microbial Changes in Rats." *Life Sciences* 225 (May): 88–97. <https://doi.org/10.1016/j.lfs.2019.04.006>.

251 Owens, Judith A., Tracy Dearth-Wesley, Daniel Lewin, Gerard Gioia, and Robert C. Whitaker. 2016. "Self-Regulation

252 and Sleep Duration, Sleepiness, and Chronotype in Adolescents." *Pediatrics* 138 (6).

253 <https://doi.org/10.1542/peds.2016-1406>.

254 Prabhakar, Ch., and K. Bala Krishna. 2011. "A Review on Nanosuspensions in Drug Delivery." *International Journal of*

255 *Pharma and Bio Sciences* 2 (1): 549–58.

256 Rendeiro, Catarina, Jeremy P.E. Spencer, David Vauzour, Laurie T. Butler, Judi A. Ellis, and Claire M. Williams. 2009.

257 "The Impact of Flavonoids on Spatial Memory in Rodents: From Behaviour to Underlying Hippocampal

258 Mechanisms." *Genes and Nutrition*. <https://doi.org/10.1007/s12263-009-0137-2>.

259 Tufik, Sergio, Monica L. Andersen, Lia R. A. Bittencourt, and Marco T. De Mello. 2009. "Paradoxical Sleep Deprivation:

260 Neurochemical, Hormonal and Behavioral Alterations. Evidence from 30 Years of Research" 81 (3): 521–38.

261 www.scielo.br/aabc.

262 Wu, Hao, Sophie Dunnett, Yuen Shan Ho, and Raymond Chuen Chung Chang. 2019. "The Role of Sleep Deprivation

263 and Circadian Rhythm Disruption as Risk Factors of Alzheimer's Disease." *Frontiers in Neuroendocrinology*.

264 Academic Press Inc. <https://doi.org/10.1016/j.yfrne.2019.100764>.

265 Taufiqurrachman and S. Wibowo. 2006. Effect of purwoceng (*Pimpinella alpina*) extract in stimulating testosterone,

266 Luteinizing hormone (LH) and Follicle Stimulating Hormone (FSH) in Sprague Dawley male rats. Prosiding Seminar

267 Nasional dan Pameran Tumbuhan Obat Indonesia, XXVIII. Bogor. pp 45-54.

268

Purwoceng nanosuspension repairs spatial white albino wistar strains' spatial memory degeneration after sleep deprivation

ABSTRACT. *Paradoxical Sleep Deprivation* (PSD) induces oxidative stress and interferes permanent memory consolidation in hippocampus. Purwoceng (*Pimpinella prutjan Molken*) is herbal medicine with antioxidant effect. These effects will be more effective with nanosuspension technology. The research purposes is to find effect of PSD to rats' spatial memory reduction and to find purwoceng nanosuspension extract effect to improve rats' spatial memory after PSD stress induction. The research method is randomized controlled trial with posttest only with control group approach to 36 white male albino rats Wistar strain which is induced by 96 hours PSD stress model. Experiment groups is regular extract 25 mg/300g BW/day, purwoceng nanosuspension extract 25 mg/300 gBW/day, 50 mg/300 gBW/day, and 75 mg/300 gBW/day. Statistical analysis found that there is no significant effect of purwoceng extract to memory traveling time ($p=0.414$) and memory track length ($p=0.316$) between pre-PSD and post-PSD group. There is significant effect of PSD stress after purwoceng administration to memory track length and memory travelling time ($p=0,005$). The conclusion is that there is significant correlation between the difference of memory latency and memory traveling time of MWM (Morris Water Maze) test between the various purwoceng nanoemulsion dose. The 25-50 mg/300 gBW/day is effective dose of purwoceng nanoemulsion extract to repairs spatial memory degeneration after PSD stress.

Keywords: nanoemulsion; paradoxical sleep deprivation; purwoceng; spatial memory; sleep deprivation

INTRODUCTION

Sleep deprivation (SD) or lack of sleep can disrupt circadian rhythm and physiology mechanism of body (Ma *et al.* 2019). It induces oxidative stress which damages temporary and permanent memory consolidation as we find in Alzheimer, Parkinson, and another brain degenerative disease (Wu *et al.* 2019). Characteristics of these diseases are reduction of quality and quantity of post synapses neuron and hippocampus cell (Havekes, 2017). Paradoxical sleep deprivation elevates glucose metabolism up to 30 % until there is excess of free radicals, disrupt sleep-and-wake cycle, leads to antioxidant imbalance, oxidative stress in hippocampus and the other central nervous system part (Owens *et al.* 2016). Sleep deprivation intensifies corticosterone level, induces CA3 neuron atrophy and reduces arborization (dendrite branching) in hippocampus. Those effect generates spatial memory problem and anxiety behavior to experimental animals (Konankanchi, 2022). The potential of purwoceng as an antioxidant is found in bioflavonoid compounds, the exogenous antioxidants that can increase antioxidant levels and suppress free radical formation (Nurchayanti *et al.*, 2018). Bioflavonoids also activate ascorbic acid which is useful as an antioxidant and neuroprotectant (Teleanu *et al.* 2019). Tests on the antioxidant activity of purwoceng ethanol extract showed that purwoceng was able to capture free radicals (Qodri *et al.*, 2013)

Indonesian unique herbal medicine (2019), Purwoceng (*Pimpinella pruatjan Molkenb*) has antioxidant effect because of phenol and bioflavonoid content). Nanosuspension technology makes colloid particle can be dispersed into submicron size less than 1 μm , with mean sizes is 200 - 600 nm (Ansari *et al.*, 2012). The technology has been expected to increase absorption, bioavailability, onset, peak level and penetration compared with regular extract. Bioflavonoid as exogen antioxidant can escalate antioxidant body level and reduces ROS free radicals as product of oxidative stress. This research purposes is to find sleep deprivation effect to spatial memory ability and antioxidant ability of purwoceng nanosuspension. This research uses nano preparation technology that can increase the bioavailability and absorption of active ingredients so that the selectivity, effectiveness and safety of herbs are more higher (Ansari *et al.*, 2012). The release of active compounds can be controlled to minimize side effects and with nano size can be given in high concentrations due to their small size and high loading capacity (Dewandari *et al.*, 2017). We expected that this results can eliminate the

disobedience of patient because the available formulations usually use large doses and minimize the lack of drug target specificity for chronic disease.

MATERIALS AND METHODS

This is experimental, randomized controlled trial with posttest only, control group design research. The subjects are 36 white male albino rats Wistar strain, divided into 6 groups: Group A: PSD with sleep recovery; group B: PSD without sleep recovery; group C: PSD and Purwoceng extract 25 mg/300 gBW/day, group D: PSD + purwoceng nanosuspension extract 25 mg/300 gBW/day, group E: 50 mg/300 gBW/day; group F: 75 mg/300 gBW/day. The chosen dose is based on recent research by Pribadi, (2012) and Nuryadin dan Nabilla (2018). Their research doses are 25 mg/mL/day for 300-gram body weight or 83,25 mg/kgBW. Nanoemulsion extract dose is 25 mg/3 mL by single dose 3 mL nanoemulsion solution given by oral tube.

The purwoceng has been obtained from Batur village, Dieng plateau, Banjarnegara. Plant determination has been done in plant taxonomy laboratory of Biology Faculty, Universitas Jenderal Soedirman, Purwokerto. Nanoemulsion process has been done in Pharmacy Laboratory of Pharmacy Faculty, Jenderal Soedirman University, Purwokerto. Purwoceng nanoemulsion extract has been made by mixing purwoceng ethanol extract with Tween 80, stirred with magnetic stirrer 500 rpm for 15 minutes, added by PEG 400 and Virgin coconut oil, and then stirred for 15 minutes. The solution is added by a few aquadest slowly, and then stirred by magnetic stirrer 1000 rpm for 15 minutes, and then sonicated in 25 – 40 °C temperature for 30 minutes. The nanoemulsion phytochemicals are being screened to measure alkaloid and flavonoid components, followed by nanoemulsion characteristics test, such as organoleptic, transmittance percentage (%T), particle size, and particle size distribution and also Zeta Potential.

Paradoxical Sleep Deprivation. Experimental animals were being placed in stainless steel cage filled with water. It has 24x26x29 cm dimension, two platform with 6 cm diameter. The foothold has muscle atonia shock device which which automatically turns on every 10 minutes to give a shock effect for 1 second that causes a wake-up effect. This treatment is carried out for 96 hours with a break between 07.00 – 11.00 WIB (Arjadi *et al.* 2021).

Morris Water Maze (MWM) test. Assessment of the spatial memory ability of rats using the MWM test in a pool with a diameter of 180 cm and a height of 76 cm divided into 4 parts, one of which is given a footing (on the shallow bottom of the water, not on the surface of the water) to stand and stand on. The water filled with the pond consists of water and coconut milk/milk, which is useful for clouding the water, so the rats are judged to find a foothold based on memory. The test takes 7 days, namely the first 5 days the experimental animals are swam 4 times a day within 60 seconds, until they find a foothold (acquisition trial / acquisition test phase). On the 6th day, the stepping platform was taken and the experimental animals were allowed to swim to find a foothold according to what was remembered (probe trial/probe phase) and recorded the results of the trial probe as initial data for the memory test of the experimental mice and on the 7th day a spatial ability test/sensorineural MWM test/examination trial phase was conducted.

The treatment was documented by video camera and observed the spatial latency time ability test the spatial memory capabilities of the rats by counting the time recorded from the time it were entered into the pond until it were on a platform. The spatial ability test was tested for the length of the test track to assess memory capabilities. We get spatial data of the rats by measuring the area and distance of the path traveled in finding a foothold, and the results of the comparison of the distance measured in the actual pond diameter with the diameter of the pond in the video, multiplied by the distance in the video. The data is presented in tabular and graphical form, where the X-axis represents the day session from the acquisition trial to the 7th day of testing and the Y-axis represents latency time (in seconds) or track length (in cm) (Buccafusco, 2009)

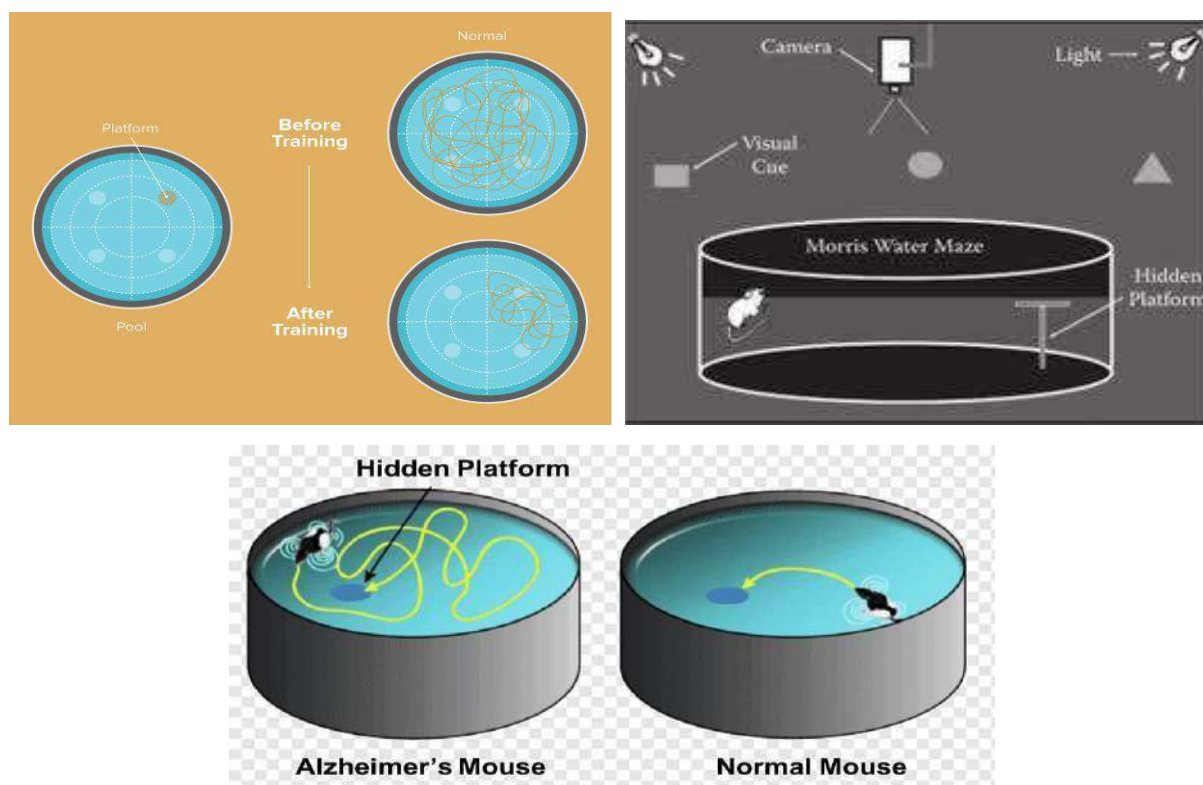


Fig. 1. Test of spatial memory ability of experimental animals (A. Morris Water Maze pool B. Acquisition test phase C. Test results between normal and impaired memory)

The MWM test was carried out at the end of each treatment phase as reference data for indicators of spatial memory ability and became the basis for the analysis of the data used. The degree of degeneration of spatial memory abilities is determined by the **longer** the path length and the longer the latency time required to reach the target. Tests a few days before the sensorineural test (acquisition phase and probe phase) were carried out as a means of practice and trials to increase the frequency of target recognition by footing. The data displayed in the pre-PSD, post-PSD, and post-Purwoceng phases are descriptive data to see the pattern of spatial memory development per experimental rat in the MWM pool and analyzed to get a conclusion. Research ethics were obtained from the Health Research Ethics Commission, Faculty of Medicine, Jenderal Soedirman University, Number 097/KEPK/V/2021 dated 10 May 2021.

Data Analysis. The research data was tested for the normality of the data distribution using the Shapiro-Wilk and homogeneity test and data variance using Levene's Test. If the data transformation is normal and heterogeneous, it is analyzed using One Way of Variance (ANOVA) as a parametric test **and** if it is not normal, it is tested with Kruskal Wallis. The test was continued with the Tukey Post-Hoc test to determine whether there was a significant difference between the control group and the treatment group with a significance level of $p < 0.05$.

RESULTS AND DISCUSSION

The transmittance test showed that the size of the clarity and purity of the nanoemulsion formed was 84.5% and although it did not reach 100%, it was sufficient as a marker of the validity of the nanoemulsion solution structurally. The particle size distribution test of the Purwoceng nanoemulsion solution was found to be 123.87 ± 28.9 nm which indicates that the particle size distribution is ideal because it is in the range of 20-200 nm, so that the stability and distribution of molecules in the dissolution medium is optimal. The results of the polydispersity index of the Purwoceng nanoemulsion solution obtained the number 0.37 ± 0.11 which indicates that the intermediate disparity is between homogeneous and heterogeneous. The results of the zeta potential of the Purwoceng nanoemulsion solution were found to be -16.56 ± 1.19 mV, which indicated good molecular stability

of the nanoemulsion solution from particle attraction aggregation, because it was in the range of -30 to 30 mV. The results of the phytochemical screening test showed that the Purwoceng extraction solution was reactive in the alkaloid and flavonoid testing which indicated that the extraction solution was positive for qualitatively qualitative alkaloids and flavonoids.

Table 1. Comparison of observation results of mwm of latency time test data.

Groups	Latency time (seconds)		
	Pre-PSD	Post-PSD	After Purwoceng Treatment
A (PSD Non Sleep)	20.25	42.25	-
B (PSD + Sleep)	5.25	9.25	-
C (PSD + 25 mg extract)	13	21.25	46
D (PSD + 25 mg nanoemulsion)	15	39.25	27.25
E (PSD + 50 mg nanoemulsion)	7.5	12.5	12.5
F (PSD + 75 mg nanoemulsion)	11	7	12.25

Table 2. Data comparison of observation results long path of mwm examination trial per phase between groups of experimental wistar rats.

Groups	Track length (cm)		
	Pre-PSD	Post-PSD	After Purwoceng Treatment
A (PSD Non Sleep)	562.5	900.25	-
B (PSD + Sleep)	112	205	-
C (PSD + 25 mg extract)	255	511.25	1013.25
D (PSD + 25 mg nanoemulsion)	321.5	837	487.5
E (PSD + 50 mg nanoemulsion)	180	271.75	190.75
F (PSD + 75 mg nanoemulsion)	197.5	167	2715

Based on the figures in Tables 1 and 2, it can be seen that there is a decreasing trend of spatial memory ability between the average rats after PSD treatment, however statistically there is no significant difference between PSD to the decrease in spatial memory ability in rats and sleep recovery does not provide a difference to spatial memory ability. The paired t-test between pre-PSD and post-PSD in group A showed travel time $p = 0.168 > 0.05$ and path length $p = 0.145 > 0.05$ and Wilcoxon test in group B obtained travel time $p = 0.180 > 0.05$ and path length $p = 0.068 > 0.05$. These results differ from the findings of several studies on memory disorders.

Recent research (Heba *et al.*, 2021) stated that 72 hours of PSD treatment through reduced catalase activity and glutathione levels, inhibition of Na/K ATPase in the hippocampus and cerebral cortex, increased acetylcholinesterase and lipid peroxidation which resulted in the induction of oxidative stress and increased brain excitability can reduce memory performance and increase anxiety levels in rats. Recent research by Kamphuis *et al.*, (2017) states that the disruptive consequences of degeneration of the prefrontal cortex in experimental rats treated with sleep disturbances for seven days caused degeneration of the prefrontal cortex with symptoms of slower motor responses and impulsiver reflexes. Increased anxiety in post-PSD rats resulted in increased brain excitability and overactivity of motor behavior that made the rat's instincts move faster which increased the length of the trajectory in the sensorineural MWM test.

Atrooz *et al.* (2019) stated that prolonged sleep disturbances increase the incidence of forgetting and cause memory fragmentation such as short and medium-term memory loss due to weakened associative pathways characterized by a decrease in the number of pyramidal and dendritic cells in the CA1 hippocampus area, the main area of memory pathway transmission. According to Wu *et al.* (2019), the pathophysiological mechanism of memory degeneration due to sleep disturbances is related to glymphatic-vascular-lymphatic clearance in brain macromolecular structures, increased oxidative stress in the brain and decreased levels of melatonin in blood circulation.

Hunter's research (2019) states that there is no evidence of a detrimental effect of REM sleep disturbances on the performance of experimental mice in the acquisition phase of the MWM test, both during retention and reversal, and REM is only useful in helping improve learning performance and available memory. Research by Karabulut *et al.* (2019) states that the post-MWM sleep phase, especially during REM sleep, plays a very critical role in modulating the consolidation and rapid repair of cells that play a role in memory which can improve the transcription of mRNA genes from pyramidal cells and lead to hippocampal neuroplasticity.

The explanation for the absence of a significant difference between PSD and the role of sleep recovery on spatial memory abilities in this study is still unknown, however it is suspected that adequate sleep compensation after PSD and before the MWM acquisition phase to sensorineural testing. The short sleep compensation was able to provided a better consolidation effect on the brain and hippocampal performance so that it could reduce the effect of decreasing spatial memory ability, which is expected to exist in the rat group. Sleep compensation in PSD was more accommodating than when it was replaced with total sleep deprivation (TSD) treatment, where mice were not allowed to sleep at all for several days. According to Tufik *et al.* (2009), adequate compensation from regular sleep-wake cycles can improve neurophysiological and behavioral changes significantly despite having experienced sleep disturbances, indicating no significant difference in spatial memory ability between the groups of rats with sleep recovery and without sleep recovery because all groups received sleep compensation even with different duration.

Based on statistical tests, there was no significant difference between the administration of Purwoceng on spatial memory abilities in rats based on the length of the track and the latency time. The administration of purwoceng non-nanosuspension and nanosuspension extraction at a dose of 25 mg, 50 mg, or 75 mg did not give a significant difference in spatial memory ability. Data analysis using Paired t-test group C (non-nanoemulsion Purwoceng extract) showed travel time $p = 0.271 (> 0.05)$ and path length $p = 0.224 (> 0.05)$, group D (Purwoceng nanoemulsion 25 mg/gBW) obtained travel time $p = 0.21 > 0.05$ and path length $p = 0.249 (> 0.05)$, Wilcoxon test in group E (Purwoceng nanoemulsion 50 mg/gBW) obtained travel time $p = 0.465 (> 0.05)$ and path length $p = 0.465 (> 0.05)$, and group F (Purwoceng nanoemulsion 75 mg/gBW) obtained travel time $p = 0.651 (> 0.05)$ and path length $p = 0.647 (> 0.05)$. Bivariate analysis testing the spatial memory ability of rats after administration of Purwaceng through the One-Way ANOVA test showed a significant relationship between travel time ($p = 0.000 < 0.05$) and track length ($p = 0.001 < 0.05$) in groups C, D, E, and C and F. The post hoc test showed that the lowest travel time was group D, followed by groups F and E, while the highest travel time was found in group C and in the section on track length, the lowest track length was group E, but not much different with groups D and F.

The explanation of the absence of significant differences between Purwoceng on post-PSD spatial memory ability is not certainly known. It is suspected that the active flavonoid substances in Purwaceng are able to reduce the level of cell aging and the level of tissue inflammation but cannot provide instantaneous improvement in the quality of spatial memory. Flavonoids can modulate neuronal signaling pathways that are important in memory processing, synaptic plasticity, and long-term potentiation mechanisms as the basis for the formation of a memory (Rendeiro *et al.*, 2009) and improve cognitive memory through activation of kinases in the MAPK and P13 kinase pathways and accelerate the process of regulation of the cAMP response element-binding protein (CREB) which is important in the memory storage process in the hippocampus and cerebral cortex (Krishnaveni, 2012), Nanoparticle preparation technology by emulsification was proven to produce significant pharmacological effects which was indicated by the difference in the level of decline in spatial memory ability at different doses of Purwoceng and non-nanoemulsion extract Purwoceng had a higher rate of degeneration of spatial memory ability compared to the group that received Purwoceng nanoemulsion.

CONCLUSION

There was no effect between the decrease in spatial memory ability and the number of pyramidal cells and hippocampal volume in albino male wistar rats treated with PSD. There was no significant effect of giving Purwoceng nanoemulsion on improving spatial memory ability of albino male wistar rats treated with PSD. There is a significant effect on the difference in latency and path length of the MWM test between doses of Purwoceng nanoemulsion. The dose of 25 - 50 mg is the effective dose of the Purwoceng nanoemulsion which results in a shorter path length and latency time indicating an improvement in post-PSD spatial memory degeneration.

ACKNOWLEDGEMENT

The author would like to thank to Head of Research and Community Service, Jenderal Sudirman University, Head of the Department of Anatomy, Faculty of Medicine, Jenderal Soedirman University, Dzicky Rifqi Fuady as proofreader and other parties have assisted in the research.

REFERENCES

- Ansari SH, Islam F, Sameem M. 2012. "Influence of Nanotechnology on Herbal Drugs: A Review." *Journal of Advanced Pharmaceutical Technology and Research* 3 (3): 142-146. <https://doi.org/10.4103/2231-4040.101006>.
- Arjadi, Fitranto, Nur Signa Aini Gumilas, Ika Murti Harini, Vitasari Indriani, and Lantip Rujito. 2021. "The Hepatotoxic and Nephrotoxic Effects of Purwoceng (Pimpinella Pruatjan Molk.) Roots Ethanol Extract Administration in Subchronic Dose." *Molekul* 16 (2): 163-69. <https://doi.org/10.20884/1.jm.2021.16.2.729>.
- Dewardari KT, Yuliani S, Yasni S. 2017. "Ekstraksi Dan Karakterisasi Nanopartikel Ekstrak Sirih Merah (Piper Crocat Um)." *Jurnal Penelitian Pascapanen Pertanian* 10 (2): 58-65. <https://doi.org/http://dx.doi.org/10.21082/jpasca.v10n2.2013.58-65>.
- Heba SAE, Noor AE, Mourad IM, Fahmy H, Khadrawy YA. 2021. "Neurochemical Effects of Sleep Deprivation in the Hippocampus of the Pilocarpine-Induced Rat Model of Epilepsy." *Iran Journal Basic Medical Science* 24 (1): 85-91. <https://doi.org/10.22038/ijbms.2020.50621>.
- Konankachi S. 2022. Effect of Chronic Sleep Deprivation and Sleep Recovery on Hippocampal CA3 Neurons, Spatial Memory and Anxiety-like Behaviour in Rats. *Neurobiology of Learning and Memory*.vol 187:107559. doi:<http://doi.org/10.1016/j.nlm.2021.107559>.
- Krishnaveni M. 2012. "Flavonoid in Enhancing Memory Function Characterization of Reproductive Gene in Marine Fish View Project." *Journal of Pharmacy Research* 5 (7): 3870-74. doi:<https://www.researchgate.net/publication/258226325>.
- Ma, M, Song J, Wang H, Shi F, Zhou N, Jiang J, Xu Y, Zhang L, Yang L, Zhou M. 2019. "Chronic Paradoxical Sleep Deprivation-Induced Depression-like Behavior, Energy Metabolism and Microbial Changes in Rats." *Life Sciences* 225 (May): 88-97. doi:<https://doi.org/10.1016/j.lfs.2019.04.006>.
- Owens JA, Dearth-Wesley T, Lewin D, Gioia G, Whitaker RC. 2016. "Self-Regulation and Sleep Duration, Sleepiness, and Chronotype in Adolescents." *Pediatrics* 138 (6). doi:<https://doi.org/10.1542/peds.2016-1406>.
- Nurchayanti, Agustina DR, Issam JN, Frank S, Bernhard W, Ireng ID, Reichling J, Wink M. 2018. "Essential Oil Composition, In Vivo Antioxidant, and Antimicrobial Activities of Pimpinella Pruatjan from West Java, Indonesia." *The Natural Products Journal* 8 (1): 61-69. <https://doi.org/https://doi.org/10.2174/2210315507666170620093210>.
- Nuryadin E, Nabiila A. 2018. "Potential Development of Purwoceng (Pimpinella Pruatjan Molk or Pimpinella Alpine Kds) Plant Scale Industry Using In-Vitro Culture Technique By Means of Rooting Induction." *Journal of Tropical Biodiversity and Biotechnology* 3 (3): 92-96. <https://doi.org/https://doi.org/10.22146/jtbb.38849>.
- Owens, Judith A., Tracy Dearth-Wesley, Daniel Lewin, Gerard Gioia, and Robert C. Whitaker. 2016. "Self-Regulation and Sleep Duration, Sleepiness, and Chronotype in Adolescents." *Pediatrics* 138 (6). <https://doi.org/10.1542/peds.2016-1406>.
- Qodri ZU, Cahyono B, Suzery M. 2013. "Analisis Kimiawi Fraksi N-Heksana Dari Tanaman Purwoceng." *Jurnal Kimia Sains Dan Aplikasi* 16 (1): 27-32. <https://doi.org/https://doi.org/10.14710/jksa.16.1.27-32>.
- Rendeiro C, Spencer JPE, Vauzour D, Butler LT, Ellis JA, Williams CM. 2009. "The Impact of Flavonoids on Spatial Memory in Rodents: From Behaviour to Underlying Hippocampal Mechanisms." *Genes and Nutrition*. doi:<https://doi.org/10.1007/s12263-009-0137-2>.
- Tufik S, Andersen ML, Bittencourt LRA, De Mello MT. 2009. "Paradoxical Sleep Deprivation: Neurochemical, Hormonal and Behavioral Alterations. Evidence from 30 Years of Research" 81 (3): 521-38. www.scielo.br/aabc.
- Teleanu, Raluca Ioana, Cristina Chircov, Alexandru Mihai Grumezescu, Adrian Volceanov, and Daniel Mihai Teleanu. 2019. "Clinical Medicine Antioxidant Therapies for Neuroprotection-A Review." <https://doi.org/10.3390/jcm8101659>.
- Wu H, Dunnett S, Ho YS, Chang RCC. 2019. "The Role of Sleep Deprivation and Circadian Rhythm Disruption as Risk

Biogenesis Jurnal Ilmiah Biologi <biogenesis@uin-alauddin.ac.id>
To fitranto.arjadi@unsoed.ac.id., ranggakh87, tuti.suhesti

[bio] Editor Decision

2022-04-14 06:12 AM

LETTER OF ACCEPTANCE

Dear Authors,
Fitranto Arjadi, Rangga Wisnu Wardana, Tuti Sri Suhesti,

On behalf of Biogenesis: Jurnal Ilmiah Biologi editorial team, we are pleased to inform you that your manuscript with ID number 26488 entitled "Purwoceng nanosuspension repairs spatial whitealbino wistar strains' spatial memory degeneration after sleep deprivation" has been accepted and will be published it on vol 10, no 1 (June 2022).

The authors will receive a payment invoice through email as soon as possible.

Thank you for submitting your work to Biogenesis: Jurnal Ilmiah Biologi. We hope to receive it in the future too.

Editorial Team
Biogenesis: Jurnal Ilmiah
BiologiSINTA 2
Universitas Islam Negeri Alauddin Makassar, Indonesia

Biogenesis: Jurnal
IlmiahBiologi <http://journal.uin-alauddin.ac.id/index.php/biogenesis>

Copyediting

Participants

- [Cut Muthiadin \(cutmuthiadin\)](#)
- [St Aisyah Sijid \(staisyah\)](#)
- [Fitranto Arjadi \(fitranto1971\)](#)

Messages

Note

From

—

2022-02-04 12:33 AM

Payment Invoice (APC) for Biogenesis Jurnal Ilmiah Biologi, SINTA 2

External

Inbox

Thu, Jun 2, 2022, 10:44 AM

Biogenesis Jurnal Ilmiah Biologi <biogenesis@uin-alauddin.ac.id>
To fitranto.arjadi@unsoed.ac.id., ranggakh87, tuti.suhesti

Dear Authors,

Fitranto Arjadi, Rangga Wisnu Wardana, Tuti Sri Suhesti

We are contacting you regarding the latest invoice for your manuscript entitled **Purwoceng nanosuspension repairs spatial white albino wistar strains' spatial memory degeneration after sleep deprivation**, which will be published in Biogenesis: Jurnal Ilmiah Biologi Vol 10 No 1, 2022 SINTA 2 (<http://journal.uin-alauddin.ac.id/index.php/biogenesis/>) as written in the publication charge tab. You can make your payment before **June 16, 2022**. You can find detailed information in the invoice attached.

After making payment via bank transfer or Paypal, kindly **send a screenshot of your payment transaction to us through this email**. Then we will reply with the payment receipt for your invoice.

Your manuscript (pdf) will be published after the APC has been completed.
The issue (Vol 10 No 1) will be available online beginning in June-July 2022.

Best Regards,

Isna Rasdianah Aziz

Editor in Chief Biogenesis: Jurnal Ilmiah Biologi SINTA 2
Department of Biology, Faculty of Science and Technology
Universitas Islam Negeri Alauddin Makassar
South Sulawesi, Indonesia. 92113
Ph./WA/Telegram: +6285242001984
SCOPUS ID: 57203528937
E-mail: isna-rasdianah@uin-alauddin.ac.id

Copyediting

[Close Panel](#)

Participants

- Cut Muthiadin (cutmuthiadin)
- St Aisyah Sijid (staisyah)
- Fitranto Arjadi (fitranto1971)

Messages

Note

From

—
2022-02-04 12:33 AM

Proofreading[Close Panel](#)**Participants**

- Cut Muthiadin (cutmuthiadin)
- St Aisyah Sijid (staisyah)
- Fitranto Arjadi (fitranto1971)

Messages

Note	From
	—
	2022-02-04 12:33 AM

Galleys

-

Name

[PDF](#)

Vol 10, No. 1, June 2022, pp. 37-43

Available online <http://journal.uin-alauddin.ac.id/index.php/biogenesis>DOI <https://doi.org/10.24252/bio.v10i1.26488>

Purwoceng (*Pimpinella pruatjan* Molk.) nanosuspension repairs spatial white albino wistar strains' spatial memory degeneration after sleep deprivation

Rangga Wisnu Wardana¹, Tuti Sri Suhesti², Fitranto Arjadi^{3*}¹Department of Biomedical Sciences, Faculty of Medicine, Universitas Muhadi Setiabudi
Jl. Pangeran Diponegoro No. KM2, Rw. 11, Wanasari, Brebes, Central Java, Indonesia. 52212²Department of Pharmaceutical Biology, Faculty of Pharmacy, Universitas Jenderal Soedirman
Jl. Profesor DR. HR Boenyamin No. 708, Grendeng, North Purwokerto, Banyumas, Central Java, Indonesia. 53122³Department of Anatomy, Faculty of Medicine, Universitas Jenderal Soedirman
Jl. Profesor DR. HR Boenyamin No. 708, Grendeng, North Purwokerto, Banyumas, Central Java, Indonesia. 53122*Email: fitranto.arjadi@unsoed.ac.id

ABSTRACT. Paradoxical sleep deprivation (PSD) induces oxidative stress and interferes permanent memory consolidation in hippocampus. Purwoceng (*Pimpinella pruatjan* Molk.) is herbal medicine with antioxidant effect. These effects will be more effective with nanosuspension technology. The research purposes were to find effect of PSD to rats' spatial memory reduction and to find Purwoceng nanosuspension extract effect to improve rats' spatial memory after PSD stress induction. The research method is randomized controlled trial with posttest only with control group approach to 36 white male albino rats Wistar strain which is induced by 96 h PSD stress model. Experiment groups is regular extract 25 mg/300g BW/day, Purwoceng nanosuspension extract 25 mg/300 gBW/day, 50 mg/300 gBW/day, and 75 mg/300 gBW/day. Statistical analysis found that there is no significant effect of Purwoceng extract to memory traveling time ($p=0.414$) and memory track length ($p=0.316$) between pre-PSD and post-PSD group. There is significant effect of PSD stress after Purwoceng administration to memory track length and memory travelling time ($p=0,005$). The conclusion is that there is significant correlation between the difference of memory latency and memory traveling time of morris water maze (MWM) test between the various Purwoceng nanoemulsion dose. The 25-50 mg/300 gBW/day is effective dose of Purwoceng nanoemulsion extract to repairs spatial memory degeneration after PSD stress.

Keywords: Antanan gunung; nanoemulsion; paradoxical sleep deprivation; spatial memory; sleep deprivation

Article History: Received 13 January 2022; Received in revised form 30 January 2022; Accepted 14 April 2022; Available online 30 June 2022. Ver: Pre-Press

How to Cite This Article: Wardana RW, Suhesti TS, Arjadi F. 2022. Purwoceng (*Pimpinella pruatjan* Molk.) nanosuspension repairs spatial white albino wistar strains' spatial memory degeneration after sleep deprivation. *Biogenesis: Jurnal Ilmiah Biologi*. vol 10(1): 37–43. doi: <https://doi.org/10.24252/bio.v10i1.26488>.

INTRODUCTION

Sleep deprivation (SD) or lack of sleep can disrupt circadian rhythm and physiology mechanism of body (Ma *et al.*, 2019). It induces oxidative stress which damages temporary and permanent memory consolidation as we find in Alzheimer, Parkinson, and another brain degenerative disease (Wu *et al.* 2019). Characteristics of these diseases are reduction of quality and quantity of post synapses neuron and hippocampus cell (Havekes, 2017). Paradoxical sleep deprivation elevates glucose metabolism up to 30 % until there is excess of free radicals, disrupt sleep-and-wake cycle, leads to antioxidant imbalance, oxidative stress in hippocampus and the other central nervous system part (Owens *et al.*, 2016). Sleep deprivation intensifies corticosterone level, induces CA3 neuron atrophy and reduces arborization (dendrite branching) in hippocampus. Those effect generates spatial memory problem and anxiety behavior to experimental animals (Konankanchi, 2022). The potential of Purwoceng as an antioxidant is found in bioflavonoid compounds, the exogenous antioxidants that can increase antioxidant levels and suppress free radical formation (Nurcahyanti *et al.*, 2018). Bioflavonoids also activate ascorbic acid which is useful as an antioxidant and neuroprotectant (Teleanu *et al.*, 2019). Tests on the antioxidant activity of Purwoceng ethanol extract showed that Purwoceng was able to capture free radicals (Qodri *et al.*, 2013).

Indonesian unique herbal medicine (2019), Purwoceng (*Pimpinella pruatjan* Molk.) has antioxidant effect because of phenol and bioflavonoid content). Nanosuspension technology makes colloid particle can be dispersed into submicron size less than 1 μm , with mean sizes is 200 - 600 nm

(Ansari *et al.*, 2012). The technology has been expected to increase absorption, bioavailability, onset, peak level and penetration compared with regular extract. Bioflavonoid as exogen antioxidant can escalate antioxidant body level and reduces ROS free radicals as product of oxidative stress. This research purposes were to find sleep deprivation effect to spatial memory ability and antioxidant ability of Purwoceng nanosuspension. This research uses nano preparation technology that can increase the bioavailability and absorption of active ingredients so that the selectivity, effectiveness and safety of herbs are more higher (Ansari *et al.*, 2012). The release of active compounds can be controlled to minimize side effects and with nano size can be given in high concentrations due to their small size and high loading capacity (Dewandari *et al.*, 2017). We expected that these results can eliminate the disobedience of patient because the available formulations usually use large doses and minimize the lack of drug target specificity for chronic disease.

MATERIALS AND METHODS

This is experimental, randomized controlled trial with posttest only, control group design research. The subjects are 36 white male albino rats Wistar strain, divided into 6 groups: Goup A: PSD with sleep recovery; group B: PSD without sleep recovery; group C: PSD and Purwoceng extract 25 mg/300 gBW/day, group D: PSD + Purwoceng nanosuspension extract 25 mg/300 gBW/day, group E: 50 mg/300 gBW/day; group F: 75 mg/300 gBW/day. The chosen dose is based on recent research by Pribadi, (2012) and Nuryadin dan Nabilla (2018). Their research doses are 25 mg/mL/day for 300-gram body weight or 83,25 mg/kgBW. Nanoemulsion extract dose is 25 mg/3 mL by single dose 3 mL nanoemulsion solution given by oral tube.

The Purwoceng has been obtained from Batur village, Dieng plateau, Banjarnegara. Plant determination has been done in plant taxonomy laboratory of Biology Faculty, Universitas Jenderal Soedirman, Purwokerto. Nanoemulsion process has been done in Pharmacy Laboratory of Pharmacy Faculty, Jenderal Soedirman University, Purwokerto. Purwoceng nanoemulsion extract has been made by mixing purwoceng ethanol extract with Tween 80, stirred with magnetic stirrer 500 rpm for 15 minutes, added by PEG 400 and Virgin coconut oil, and then stirred for 15 minutes. The solution is added by a few aquedest slowly, and then stirred by magnetic stirrer 1000 rpm for 15 min, and then sonicated in 25 – 40°C temperature for 30 min. The nanoemulsion phytochemicals are being screened to measure alkaloid and flavonoid components, followed by nanoemulsion characteristics test, such as organoleptic, transmittance percentage (%T), particle size, and particle size distribution and also Zeta Potential.

Paradoxical Sleep Deprivation. Experimental animals were being placed in stainless steel cage filled with water. It has 24x26x29 cm dimension, two platform with 6 cm diameter. The foothold has muscle atonia shock device which automatically turns on every 10 min to give a shock effect for 1 second that causes a wake-up effect. This treatment is carried out for 96 h with a break between 07.00 – 11.00 WIB (Arjadi *et al.*, 2021).

Morris Water Maze (MWM) test. Assessment of the spatial memory ability of rats using the MWM test in a pool with a diameter of 180 cm and a height of 76 cm divided into 4 parts, one of which is given a footing (on the shallow bottom of the water, not on the surface of the water) to stand and stand on. The water filled with the pond consists of water and coconut milk/milk, which is useful for clouding the water, so the rats are judged to find a foothold based on memory. The test takes 7 days, namely the first 5 days the experimental animals are swam 4 times a day within 60 s, until they find a foothold (acquisition trial / acquisition test phase). On the 6th day, the stepping platform was taken and the experimental animals were allowed to swim to find a foothold according to what was remembered (probe trial/probe phase) and recorded the results of the trial probe as initial data for the memory test of the experimental mice and on the 7th day a spatial ability test/sensorineural MWM test/examination trial phase was conducted.

The treatment was documented by video camera and observed the spatial latency time ability test the spatial memory capabilities of the rats by counting the time recorded from the time it was entered

into the pond until it was on a platform. The spatial ability test was tested for the length of the test track to assess memory capabilities. We get spatial data of the rats by measuring the area and distance of the path traveled in finding a foothold, and the results of the comparison of the distance measured in the actual pond diameter with the diameter of the pond in the video, multiplied by the distance in the video. The data is presented in tabular and graphical form, where the X-axis represents the day session from the acquisition trial to the 7th day of testing and the Y-axis represents latency time (in seconds) or track length (in cm) (Buccafusco, 2009).

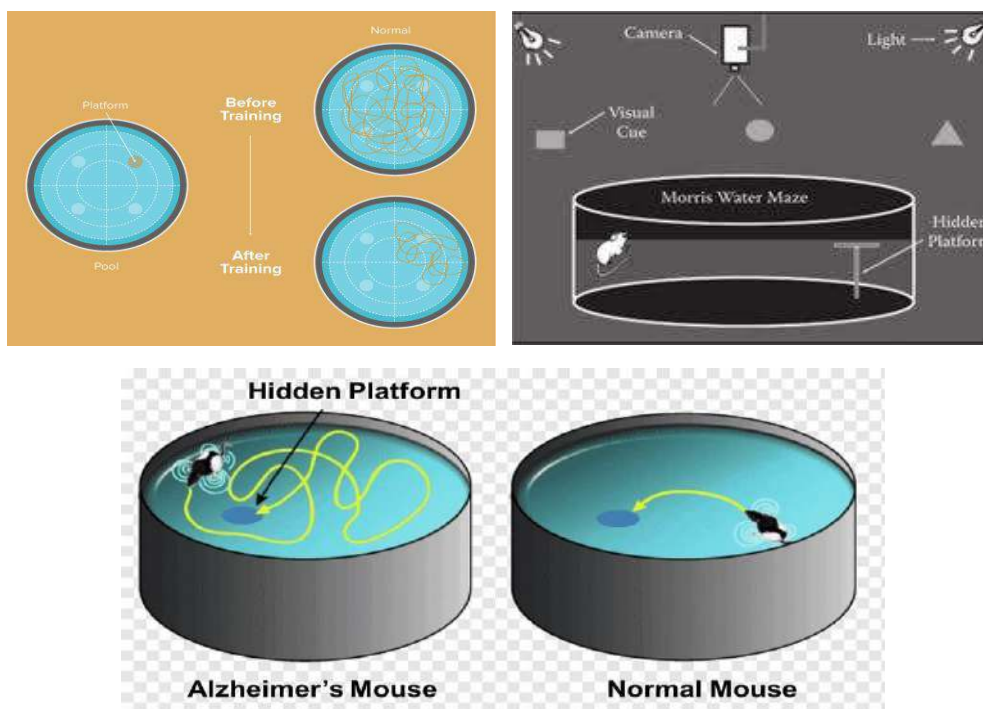


Fig. 1. Test of spatial memory ability of experimental animals: A. Morris Water Maze pool; B. Acquisition test phase; C. Test results between normal and impaired memory.

The MWM test was carried out at the end of each treatment phase as reference data for indicators of spatial memory ability and became the basis for the analysis of the data used. The degree of degeneration of spatial memory abilities is determined by the longer the path length and the longer the latency time required to reach the target. Tests a few days before the sensorineural test (acquisition phase and probe phase) were carried out as a means of practice and trials to increase the frequency of target recognition by footing. The data displayed in the pre-PSD, post-PSD, and post-Purwoceng phases are descriptive data to see the pattern of spatial memory development per experimental rat in the MWM pool and analyzed to get a conclusion. Research ethics were obtained from the Health Research Ethics Commission, Faculty of Medicine, Universitas Jenderal Soedirman, Number 097/KEPK/V/2021 dated 10 May 2021.

Data analysis. The research data was tested for the normality of the data distribution using the Shapiro-Wilk and homogeneity test and data variance using Levene's Test. If the data transformation is normal and heterogeneous, it is analyzed using One Way of Variance (ANOVA) as a parametric test and if it is not normal, it is tested with Kruskal Wallis. The test was continued with the Tukey Post-Hoc test to determine whether there was a significant difference between the control group and the treatment group with a significance level of $p < 0.05$.

RESULTS AND DISCUSSION

The transmittance test showed that the size of the clarity and purity of the nanoemulsion formed was 84.5% and although it did not reach 100%, it was sufficient as a marker of the validity of the nanoemulsion solution structurally. The particle size distribution test of the Purwoceng nanoemulsion solution was found to be 123.87 ± 28.9 nm which indicates that the particle size distribution is ideal

because it is in the range of 20-200 nm, so that the stability and distribution of molecules in the dissolution medium is optimal. The results of the polydispersity index of the Purwoceng nanoemulsion solution obtained the number 0.37 ± 0.11 which indicates that the intermediate disparity is between homogeneous and heterogeneous. The results of the zeta potential of the Purwoceng nanoemulsion solution were found to be -16.56 ± 1.19 mV, which indicated good molecular stability of the nanoemulsion solution from particle attraction aggregation, because it was in the range of -30 to 30 mV. The results of the phytochemical screening test showed that the Purwoceng extraction solution was reactive in the alkaloid and flavonoid testing which indicated that the extraction solution was positive for qualitatively qualitative alkaloids and flavonoids.

Table 1. Comparison of observation results of mwm of latency time test data.

Groups	Latency time (seconds)		
	Pre-PSD	Post-PSD	After Purwoceng Treatment
A (PSD Non-Sleep)	20.25	42.25	-
B (PSD + Sleep)	5.25	9.25	-
C (PSD + 25 mg extract)	13	21.25	46
D (PSD + 25 mg nanoemulsion)	15	39.25	27.25
E (PSD + 50 mg nanoemulsion)	7.5	12.5	12.5
F (PSD + 75 mg nanoemulsion)	11	7	12.25

Table 2. Data comparison of observation results long path of mwm examination trial per phase between groups of experimental wistar rats.

Groups	Track length (cm)		
	Pre-PSD	Post-PSD	After Purwoceng Treatment
A (PSD Non-Sleep)	562.5	900.25	-
B (PSD + Sleep)	112	205	-
C (PSD + 25 mg extract)	255	511.25	1013.25
D (PSD + 25 mg nanoemulsion)	321.5	837	487.5
E (PSD + 50 mg nanoemulsion)	180	271.75	190.75
F (PSD + 75 mg nanoemulsion)	197.5	167	2715

Based on the figures in Tables 1 and 2, it can be seen that there is a decreasing trend of spatial memory ability between the average rats after PSD treatment but statistically there is no significant difference between PSD to the decrease in spatial memory ability in rats and sleep recovery does not provide a difference to spatial memory ability. The paired t-test between pre-PSD and post-PSD in group A showed travel time $p = 0.168 > 0.05$ and path length $p = 0.145 > 0.05$ and Wilcoxon test in group B obtained travel time $p = 0.180 > 0.05$ and path length $p = 0.068 > 0.05$. These results differ from the findings of several studies on memory disorders.

Recent research (Heba *et al.*, 2021) stated that 72 hours of PSD treatment through reduced catalase activity and glutathione levels, inhibition of Na/K ATPase in the hippocampus and cerebral cortex, increased acetylcholinesterase and lipid peroxidation which resulted in the induction of oxidative stress and increased brain excitability can reduce memory performance and increase anxiety levels in rats. Recent research by Kamphuis *et al.*, (2017) states that the disruptive consequences of degeneration of the prefrontal cortex in experimental rats treated with sleep disturbances for 7 days caused degeneration of the prefrontal cortex with symptoms of slower motor responses and impulsive reflexes. Increased anxiety in post-PSD rats resulted in increased brain excitability and overactivity of motor behavior that made the rat's instincts move faster which increased the length of the trajectory in the sensorineural MWM test.

Atrooz *et al.* (2019) stated that prolonged sleep disturbances increase the incidence of forgetting and cause memory fragmentation such as short and medium-term memory loss due to weakened associative pathways characterized by a decrease in the number of pyramidal and dendritic cells in the CA1 hippocampus area, the main area of memory pathway transmission. According to Wu *et al.*

(2019), the pathophysiological mechanism of memory degeneration due to sleep disturbances is related to glymphatic-vascular-lymphatic clearance in brain macromolecular structures, increased oxidative stress in the brain and decreased levels of melatonin in blood circulation.

Hunter's research (2019) states that there is no evidence of a detrimental effect of REM sleep disturbances on the performance of experimental mice in the acquisition phase of the MWM test, both during retention and reversal and REM is only useful in helping improve learning performance and general memory. Research by Karabulut *et al.* (2019) states that the post-MWM sleep phase, especially during REM sleep, plays a very important role in modulating the consolidation and rapid repair of cells that play a role in memory which can improve the transcription of mRNA genes from pyramidal cells and lead to hippocampal neuroplasticity.

The explanation for the absence of a significant difference between PSD and the role of sleep recovery on spatial memory abilities in this study is still unknown but it is suspected that adequate sleep compensation after PSD and before the MWM acquisition phase to sensorineural testing. The short sleep compensation was able to provide a better consolidation effect on brain and hippocampal performance so that it could reduce the effect of decreasing spatial memory ability which is expected to exist in the rat group. Sleep compensation in PSD was more accommodating than when it was replaced with total sleep deprivation (TSD) treatment where mice were not allowed to sleep at all for several days. According to Tufik *et al.* (2009), adequate compensation from regular sleep-wake cycles can improve neurophysiological and behavioral changes significantly despite having experienced sleep disturbances, indicating that there is no significant difference in spatial memory ability between the groups of rats with sleep recovery and without sleep recovery because all groups received sleep compensation even with different duration.

Based on statistical tests, there was no significant difference between the administration of Purwoceng on spatial memory abilities in rats based on the length of the track and the latency time. The administration of purwoceng non-nanosuspension and nanosuspension extraction at a dose of 25 mg, 50 mg, or 75 mg did not give a significant difference in spatial memory ability. Data analysis using Paired t-test group C (non-nanoemulsion Purwoceng extract) showed travel time $p = 0.271 (> 0.05)$ and path length $p = 0.224 (> 0.05)$, group D (Purwoceng nanoemulsion 25 mg/gBW) obtained travel time $p = 0.21 > 0.05$ and path length $p = 0.249 (> 0.05)$, Wilcoxon test in group E (Purwoceng nanoemulsion 50 mg/gBW) obtained travel time $p = 0.465 (> 0.05)$ and path length $p = 0.465 (> 0.05)$, and group F (Purwoceng nanoemulsion 75 mg/gBW) obtained travel time $p = 0.651 (> 0.05)$ and path length $p = 0.647 (> 0.05)$. Bivariate analysis testing the spatial memory ability of rats after administration of Purwoceng through the One-Way ANOVA test showed a significant relationship between travel time ($p = 0.000 < 0.05$) and track length ($p = 0.001 < 0.05$) in groups C, D, E, and F. The post hoc test showed that the lowest travel time was group D, followed by groups F and E, while the highest travel time was found in group C and in the section on track length, the lowest track length was group E, but not much different with groups D and F.

The explanation of the absence of significant differences between Purwoceng on post-PSD spatial memory ability is not certainly known. It is suspected that the active flavonoid substances in Purwoceng are able to reduce the level of cell aging and the level of tissue inflammation but cannot provide instantaneous improvement in the quality of spatial memory. Flavonoids can modulate neuronal signaling pathways that are important in memory processing, synaptic plasticity, and long-term potentiation mechanisms as the basis for the formation of a memory (Rendeiro *et al.*, 2009) and improve cognitive memory through activation of kinases in the MAPK and P13 kinase pathways and accelerate the process of regulation of the cAMP response element-binding protein (CREB) which is important in the memory storage process in the hippocampus and cerebral cortex (Krishnaveni, 2012), Nanoparticle preparation technology by emulsification was proven to produce significant pharmacological effects which was indicated by the difference in the level of decline in spatial memory ability at different doses of Purwoceng and non-nanoemulsion extract Purwoceng had a

higher rate of degeneration of spatial memory ability compared to the group that received Purwoceng nanoemulsion.

CONCLUSION

There was no effect between the decrease in spatial memory ability and the number of pyramidal cells and hippocampal volume in albino male wistar rats treated with PSD. There was no significant effect of giving Purwoceng nanoemulsion on improving spatial memory ability of albino male wistar rats treated with PSD. There is a significant effect on the difference in latency and path length of the MWM test between doses of Purwoceng nanoemulsion. The dose of 25 - 50 mg is the effective dose of the Purwoceng nanoemulsion which results in a shorter path length and latency time indicating an improvement in post-PSD spatial memory degeneration.

ACKNOWLEDGEMENTS

The author would like to thank to Head of Research and Community Service, Universitas Jenderal Sudirman, Head of the Department of Anatomy, Faculty of Medicine, Universitas Jenderal Sudirman, Dzicky Rifqi Fuady as proofreader and other parties have assisted in the research.

REFERENCES

- Ansari SH, Islam F, Sameem M. 2012. Influence of Nanotechnology on Herbal Drugs: A Review. *Journal of Advanced Pharmaceutical Technology and Research* 3 (3): 142-146. <https://doi.org/10.4103/2231-4040.101006>.
- Arjadi, Fitranto, Nur Signa Aini Gumilas, Ika Murti Harini, Vitasari Indriani, and Lantip Rujito. 2021. "The Hepatotoxic and Nephrotoxic Effects of Purwoceng (Pimpinella pruatjan Molk.) Roots Ethanol Extract Administration in Subchronic Dose." *Molekul* 16 (2): 163–69. <https://doi.org/10.20884/1.jm.2021.16.2.729>.
- Dewardari KT, Yuliani S, Yasni S. 2017. Ekstraksi Dan Karakterisasi Nanopartikel Ekstrak Sirih Merah (Piper Crocat Um)." *Jurnal Penelitian Pascapanen Pertanian* 10 (2): 58–65. <https://doi.org/http://dx.doi.org/10.21082/jpasca.v10n2.2013.58-65>.
- Heba SAE, Noor AE, Mourad IM, Fahmy H, Khadrawy YA. 2021. "Neurochemical Effects of Sleep Deprivation in the Hippocampus of the Pilocarpine-Induced Rat Model of Epilepsy." *Iran Journal Basic Medical Science* 24 (1): 85–91. <https://doi.org/10.22038/ijbms.2020.50621>.
- Konankachi S. 2022. Effect of Chronic Sleep Deprivation and Sleep Recovery on Hippocampal CA3 Neurons, Spatial Memory and Anxiety-like Behaviour in Rats. *Neurobiology of Learning and Memory*.vol 187:107559. doi: <http://doi.org/10.1016/j.nlm.2021.107559>.
- Krishnaveni M. 2012. "Flavonoid in Enhancing Memory Function Characterization of Reproductive Gene in Marine Fish View Project." *Journal of Pharmacy Research* 5 (7): 3870–74.
- Ma, M, Song J, Wang H, Shi F, Zhou N, Jiang J, Xu Y, Zhang L, Yang L, Zhou M. 2019. "Chronic Paradoxical Sleep Deprivation-Induced Depression-like Behavior, Energy Metabolism and Microbial Changes in Rats." *Life Sciences* 225 (May): 88–97. doi: <https://doi.org/10.1016/j.lfs.2019.04.006>.
- Owens JA, Dearth-Wesley T, Lewin D, Gioia G, Whitaker RC. 2016. "Self-Regulation and Sleep Duration, Sleepiness, and Chronotype in Adolescents." *Pediatrics* 138 (6). doi: <https://doi.org/10.1542/peds.2016-1406>.
- Nurchayanti, Agustina DR, Issam JN, Frank S, Bernhard W, Ireng ID, Reichling J, Wink M. 2018. "Essential Oil Composition, In Vivo Antioxidant, and Antimicrobial Activities of Pimpinella Pruatjan from West Java, Indonesia." *The Natural Products Journal* 8 (1): 61–69. <https://doi.org/https://doi.org/10.2174/2210315507666170620093210>.
- Nuryadin E, Nabiila A. 2018. "Potential Development of Purwoceng (Pimpinella Pruatjan Molk or Pimpinella Alpine Kds) Plant Scale Industry Using In-Vitro Culture Technique By Means of Rooting Induction." *Journal of Tropical Biodiversity and Biotechnology* 3 (3): 92–96. <https://doi.org/https://doi.org/10.22146/jtbb.38849>.
- Owens, Judith A., Tracy Dearth-Wesley, Daniel Lewin, Gerard Gioia, and Robert C. Whitaker. 2016. "Self-Regulation and Sleep Duration, Sleepiness, and Chronotype in Adolescents." *Pediatrics* 138 (6). <https://doi.org/10.1542/peds.2016-1406>.
- Qodri ZU, Cahyono B, Suzery M. 2013. "Analisis Kimiawi Fraksi N-Heksana Dari Tanaman Purwoceng." *Jurnal Kimia Sains Dan Aplikasi* 16 (1): 27–32. <https://doi.org/https://doi.org/10.14710/jksa.16.1.27-32>.
- Rendeiro C, Spencer JPE, Vauzour D, Butler LT, Ellis JA, Williams CM. 2009. "The Impact of Flavonoids on Spatial Memory in Rodents: From Behaviour to Underlying Hippocampal Mechanisms." *Genes and Nutrition*. doi: <https://doi.org/10.1007/s12263-009-0137-2>.
- Tufik S, Andersen ML, Bittencourt LRA, De Mello MT. 2009. "Paradoxical Sleep Deprivation: Neurochemical, Hormonal and Behavioral Alterations. Evidence from 30 Years of Research" 81 (3): 521–38. www.scielo.br/aabc.
- Teleanu, Raluca Ioana, Cristina Chircov, Alexandru Mihai Grumezescu, Adrian Volceanov, and Daniel Mihai Teleanu. 2019. Clinical Medicine Antioxidant Therapies for Neuroprotection-A Review.

<https://doi.org/10.3390/jcm8101659>.

Wu H, Dunnett S, Ho YS, Chang RCC. 2019. The Role of Sleep Deprivation and Circadian Rhythm Disruption as Risk Factors of Alzheimer's Disease. *Frontiers in Neuroendocrinology*. Academic Press Inc. doi: <https://doi.org/10.1016/j.yfrne.2019.100764>.